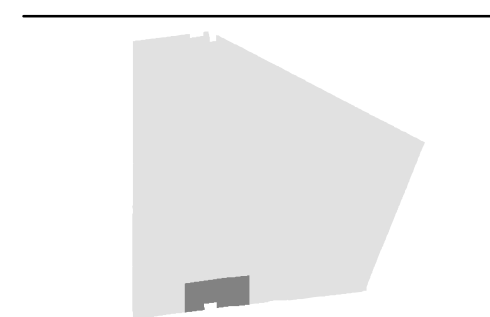
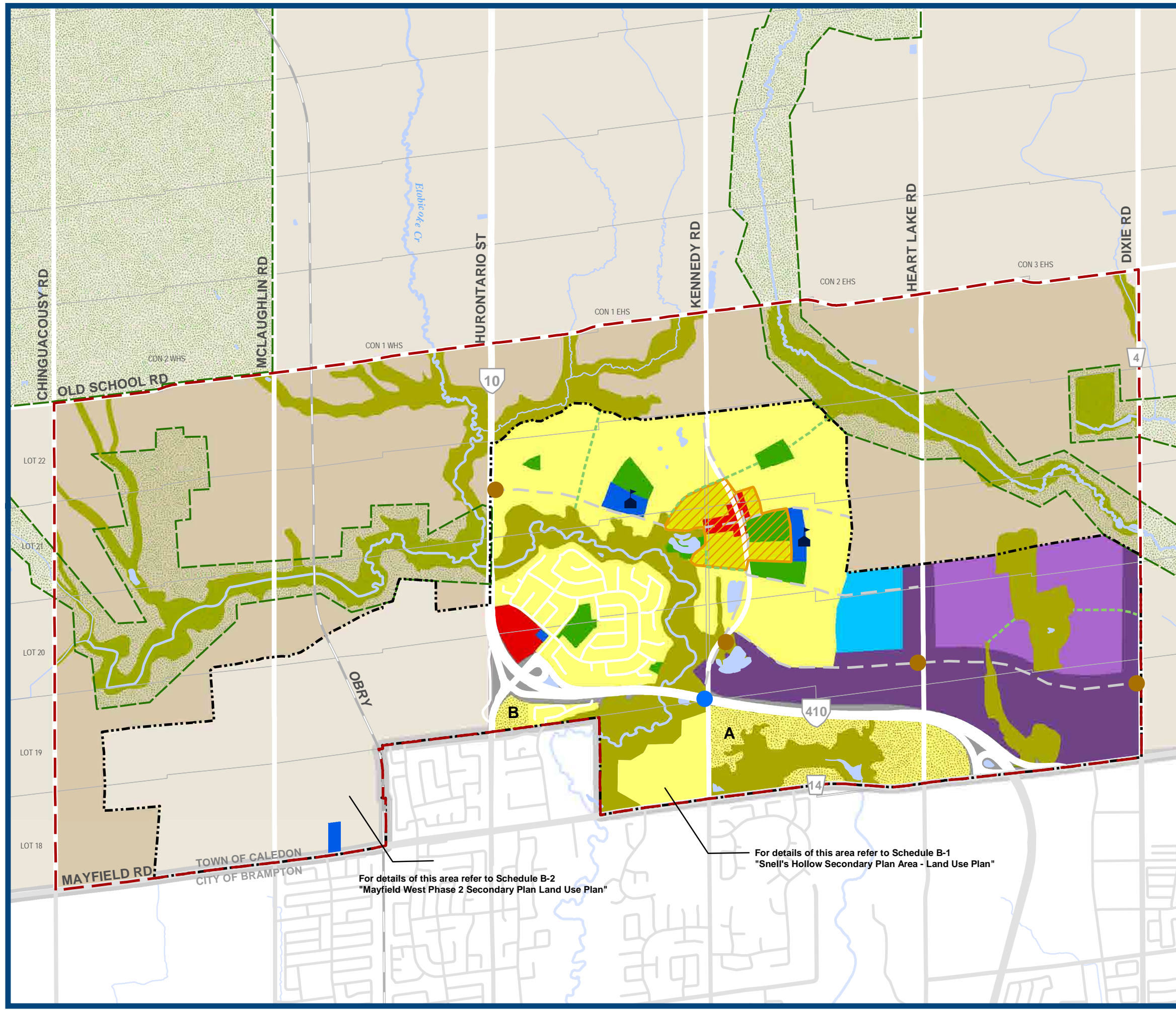


Schedule B MAYFIELD WEST LAND USE PLAN

- Prime Agricultural Area
- Residential Area
- Residential Policy Area
- Environmental Policy Area
- Open Space Policy Area
- General Commercial
- Institutional
- Mixed High/Medium Density Residential
- Academic/Research Campus
- Prestige Industrial
- General Industrial
- Highway Right-of-Way
- Village Centre Area
- Settlement Boundary 2031
- Mayfield West Study Area
- Boundary of Greenbelt Plan Area
- Greenway Corridor
- Lot and Concession Lines
- Elementary School
- Gateway Feature
- Potential Future Interchange
- Conceptual Road Network
- Provincial Road
- Regional Road
- Local Road
- Railway



Base Data Source: Town of Caledon



For details of this area refer to Schedule B-2
"Mayfield West Phase 2 Secondary Plan Land Use Plan"

For details of this area refer to Schedule B-1
"Snell's Hollow Secondary Plan Area - Land Use Plan"