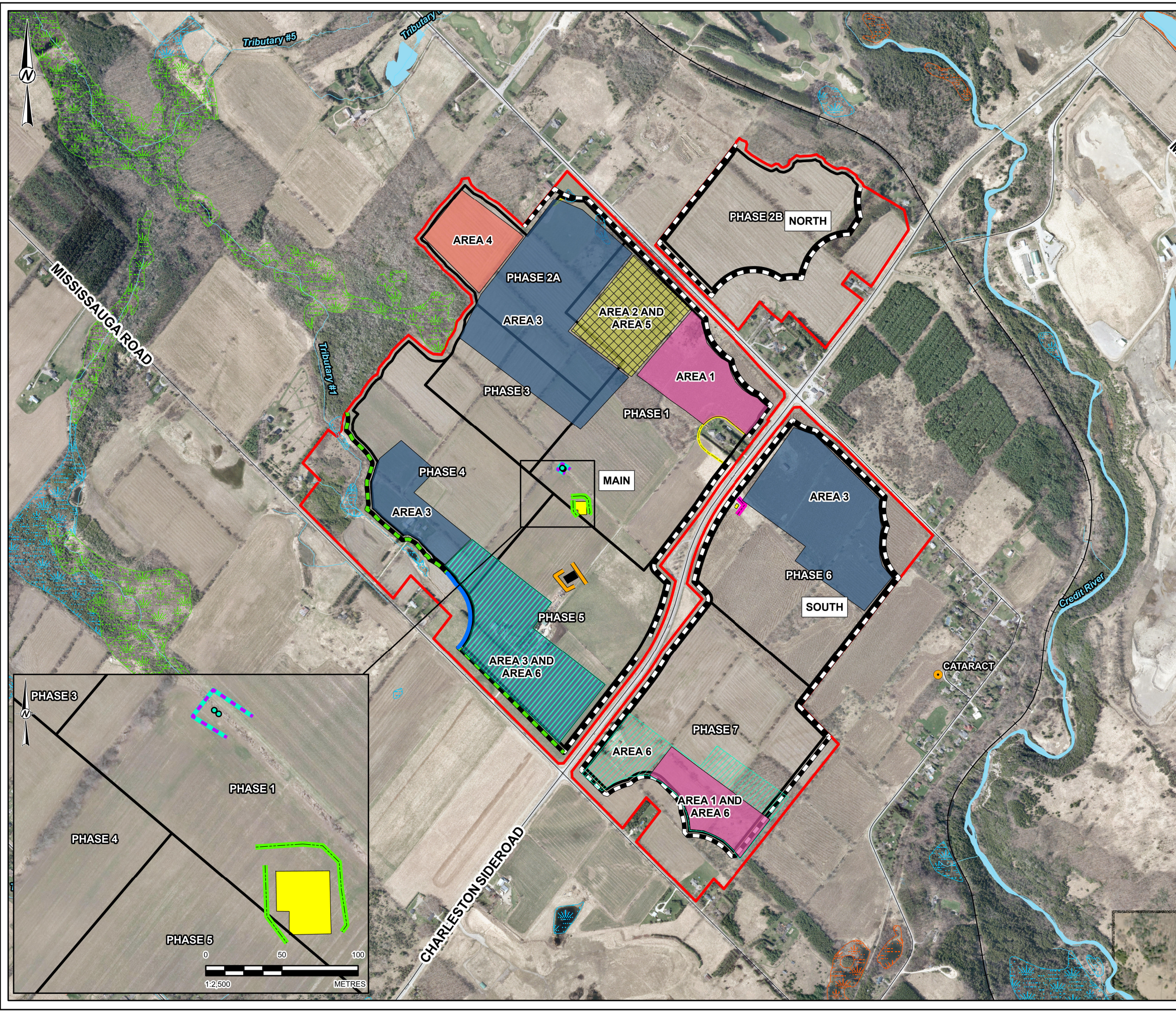


Attachment A – Revised Figure 2



LEGEND

- TOWN
- PORTABLE RECYCLING PLANT SOURCES
- TEMPORARY PROCESSING PLANT 7.5 M HIGH BARRIER W AND 6 M HIGH BARRIER E
- 13 M HIGH PERMANENT PROCESSING PLANT BARRIER E AND W
- 13 M HIGH PERMANENT PROCESSING PLANT BARRIER PHASE 6 E AND S
- 5 M HIGH PROPERTY LINE BARRIER
- 5 M HIGH PROPERTY LINE BARRIER WILL NEED TO BE COMPLETED BEFORE TEMPORARY PROCESSING PLANT IS IN OPERATION
- PROPERTY LINE BARRIER REQUIRES AN INCREASE FROM 5 M TO 7 M BEFORE OPERATION OF THE TEMPORARY PROCESSING PLANT
- RECYCLING PLANT BARRIERS
- ROAD
- RAILWAY
- WATERCOURSE
- WATERBODY
- UNEVALUATED WETLAND
- OTHER EVALUATED WETLAND
- PROVINCIALLY SIGNIFICANT WETLAND
- LICENCE BOUNDARY
- EXTRACTION PHASE
- LIMIT OF EXTRACTION
- TEMPORARY PROCESSING PLANT
- PERMANENT PROCESSING PLANT

NOISE CONTROL AREAS

- AREA 1 OPERATION OF A SINGLE UNMITIGATED DRILL
- AREA 2 OPERATION OF A SINGLE MITIGATED DRILL WITH 4.5 M HIGH, 22 M LONG LOCAL BARRIER
- AREA 3 OPERATION OF TWO MITIGATED DRILLS WITH 4.5 M HIGH LOCAL BARRIER
- AREA 3 AND AREA 6
- AREA 4 OPERATION OF ONE UNMITIGATED AND ONE MITIGATED DRILL WITH 4.5 M HIGH LOCAL BARRIER
- AREA 5 OPERATION OF TWO EXTRACTION LOADERS
- AREA 6 OPERATIONS OF TWO EXTRACTION LOADERS (WITH LOWER SOUND POWER LEVEL)

0 500 1,000
1:12,000 METRES

REFERENCE(S)

1. BASEDATA MNRF LIO OBTAINED APRIL 2019
2. WATERCOURSES OBTAINED FROM CREDIT VALLEY CONSERVATION AUTHORITY OPEN DATA PORTAL, NOVEMBER 2022 IN COMBINATION WITH SITE WATERCOURSE SURVEY PROVIDED BY FIRST BASE SOLUTIONS NOVEMBER 2021.
3. IMAGERY FIRSTBASE SOLUTIONS SPRING 2019 (15CM RESOLUTION) AND WORLD TOPOGRAPHIC MAP: ESRI, © OPENSTREETMAP CONTRIBUTORS, HERE, GARMIN, FAO, USGS, NGA, EPA, NPS, AAFC, NRCAN
WORLD IMAGERY: DUFFERIN COUNTY, PEEL REGION, VANTOR
WORLD TOPOGRAPHIC MAP: CITY OF BRAMPTON, REGION OF PEEL, ONTARIO BASE MAP, PROVINCE OF ONTARIO, ONTARIO MNR, ESRI CANADA, ESRI, © OPENSTREETMAP CONTRIBUTORS, HERE, GARMIN, USGS, NGA, EPA, USDA, NPS, AAFC, NRCAN
4. LICENCE AND LIMIT OF EXTRACTION PROVIDED BY MHBC JUNE 2023.
5. PROJECTION: TRANSVERSE MERCATOR DATUM: NAD 83 COORDINATE SYSTEM: UTM ZONE 17N

CLIENT
CBM AGGREGATES, A DIVISION OF ST. MARYS CEMENT INC. (CANADA)

PROJECT
CALEDON PIT / QUARRY

TITLE
OPERATIONAL NOISE CONTROL AND MITIGATION MEASURES

CONSULTANT	YYYY-MM-DD	2026-03-24
	DESIGNED	SO
	PREPARED	SO/MC
	REVIEWED	TN
	APPROVED	DE

PATH: S:\Client\Worshiping_Clients\Calong_Pit_5_CaledonPit_PRCO\19129150_0039_RN_0002.dwg PRINTED ON: AT: 1:45:02 PM
 IF THIS MEASUREMENT DOES NOT MATCH WHAT IS SHOWN, THE SHEET SIZE HAS BEEN MODIFIED FROM: ANSI B

Attachment B – Revised Table 1

Source ID	Source Description	Quantity	Overall Sound Power Level [dBA] ¹
Generator	Temporary Processing Plant - Generator	1	113
Screen 1-2	Temporary Processing Plant - Screen	2	115
Jaw Crusher	Temporary Processing Plant - Jaw Crusher	1	111
Cone Crusher	Temporary Processing Plant - Cone Crusher	1	110
Loader PP	Processing Plant Loader	4	107 ^{2,6}
Loader EX	Extraction Loader	3 ⁵	110 ²
Drill 1-2	Rock Drill	2 ^{7,8}	116
Screen 1-7	Permanent Processing Plant - Screen	7	108
Jaw Crusher 1-2	Permanent Processing Plant - Jaw Crusher	2	111
Cone Crusher 1-3	Permanent Processing Plant- Cone Crusher	3	107
Wash Plant Screen 1-2	Permanent Processing Plant - Screen	2	106
Haul Truck	Articulated Haul Truck	26 ³	107
Haul Truck Unloading	Haul Truck Unloading	26 ⁴	114
Shipment Truck	Highway Truck	38 ³	103
Aggregate Recycling Plant	Portable Aggregate Recycling Plant	1	116

Notes:

1-Values presented in table do not include adjustments that were considered in the modelling (i.e., time weighting) where applicable

2-Average sound power level representing various loader activities

3-Number of round trips in a given hour

4-26 unloading events

5- Number of Extraction Loaders reduced to two in Area 5

6-PWL of Extraction Loaders operating in Area 6

7-Number of Drills Reduced to one in Area 1

8- Number of Drills Reduced to one in Area 2