

MUNICIPAL CLASS ENVIRONMENTAL ASSESSMENT



MILL STREET (MISSISSAUGA ROAD TO CREDITVIEW ROAD)

WELCOME PUBLIC INFORMATION CENTRE #2

June 15, 2022
5:30pm to 7:00pm

PLEASE SIGN IN

**Please review the materials and provide your comments using the sheets provided.
Your feedback is important to us.**

Staff are available to answer your questions.

WHY ARE WE HERE?



In consideration of the comments received to date, the Town has developed additional pedestrian accommodation options for Mill Street. The Town is holding this PIC to allow residents and the public to review these options and provide input.

No recommended option has been selected.

The following preliminary recommendations presented at PIC #1 will be carried forward:

- Additional trees will be provided per Town's replanting policy
- Curb and gutter with catch basins to capture stormwater runoff
- Streetlighting improvements to enhance community safety
- Guiderail where required
- Slope stability (to be confirmed)
- Implement additional traffic calming measures (type and location to be confirmed)

Please provide your input on the pedestrian accommodation options by completing the comment sheet provided.

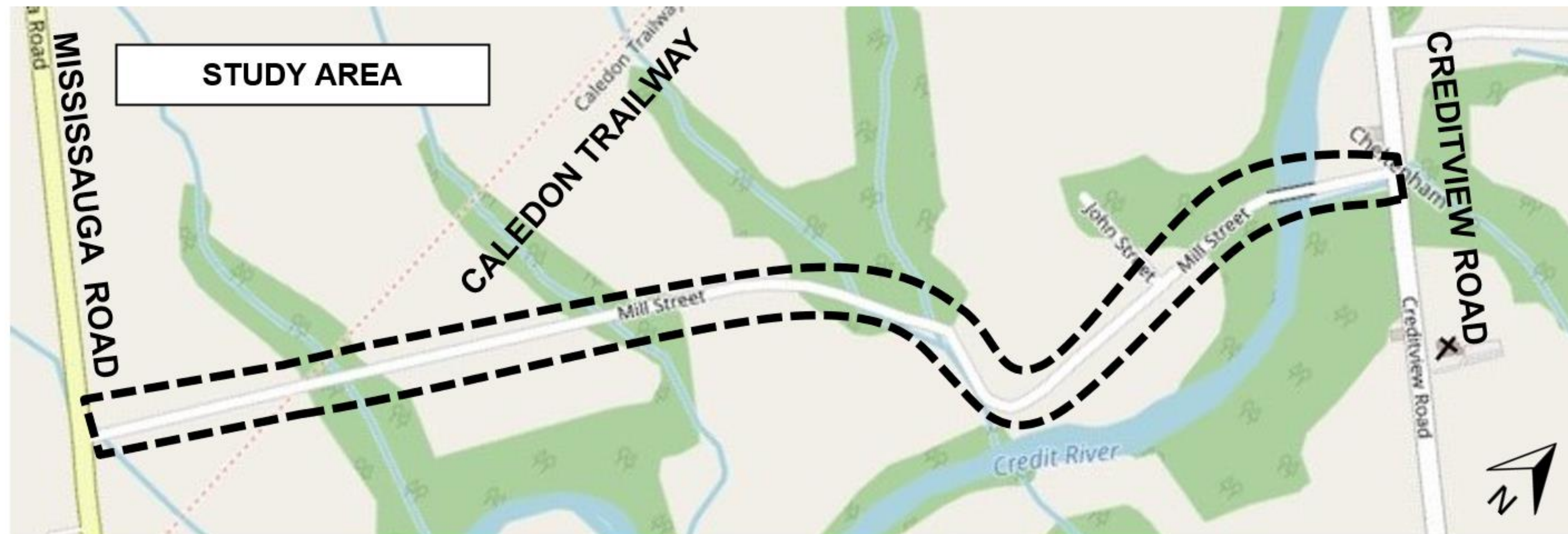
Please complete and submit the comment sheet by July 6th

STUDY AREA AND PURPOSE OF STUDY



The Study is being completed to review opportunities within the study limits to address:

- Increasing wear and tear of the roadway
- Enhanced road safety for all users
- Improved accessible active transportation (walking, cycling) including Caledon Trail crossing improvements
- Roadway drainage and stormwater management needs.

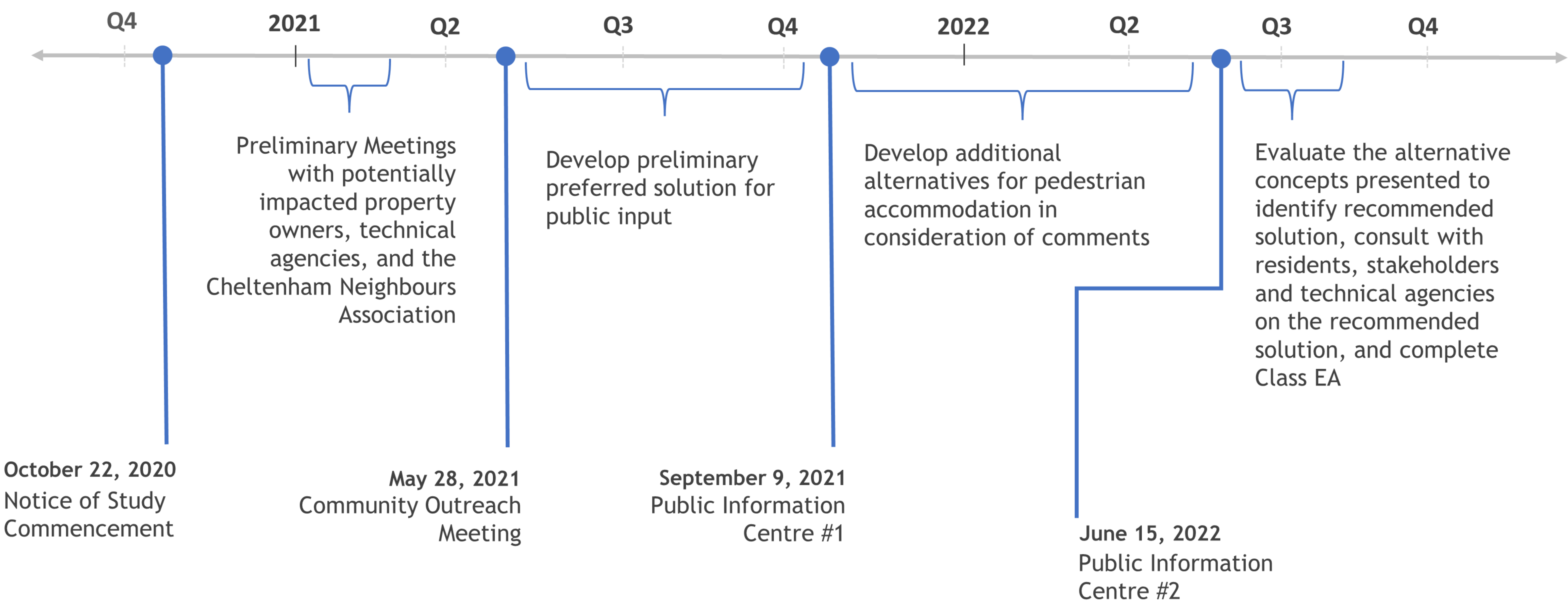


The project is being completed as a Schedule “B” project in accordance with the *Municipal Class Environmental Assessment* (October 2000, amended in 2007, 2011 & 2015).

PUBLIC AND TECHNICAL AGENCY CONSULTATION



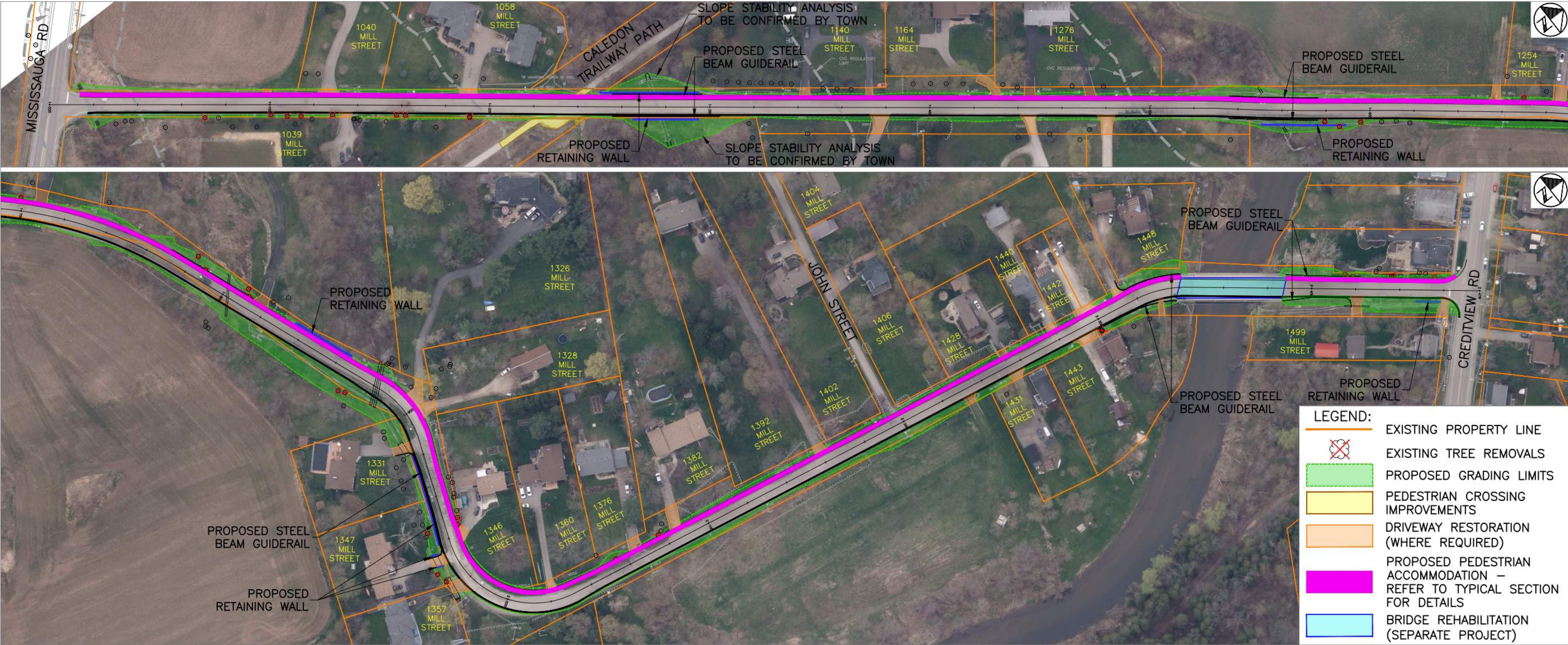
Significant public and technical agency consultation has been completed so far, but the Town wants additional input before identifying the recommended pedestrian amenities.



PEDESTRIAN ACCOMMODATION FOR MILL STREET



New pedestrian accommodation options have been developed for input from residents and the public (highlighted in purple below). All options have similar property and tree impacts.



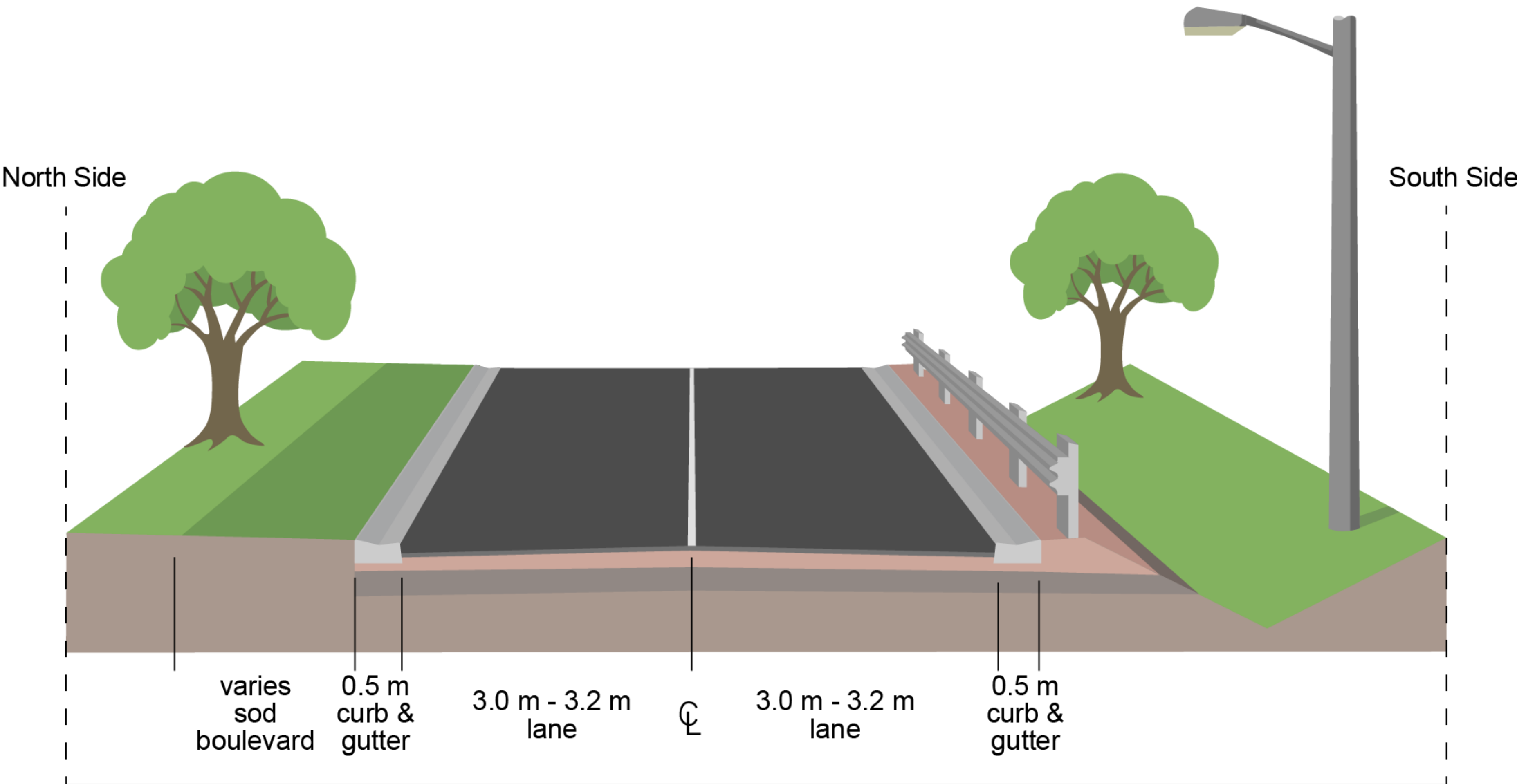
OPTION 1 – EXISTING WITH MOUNTABLE CURB

Advantages

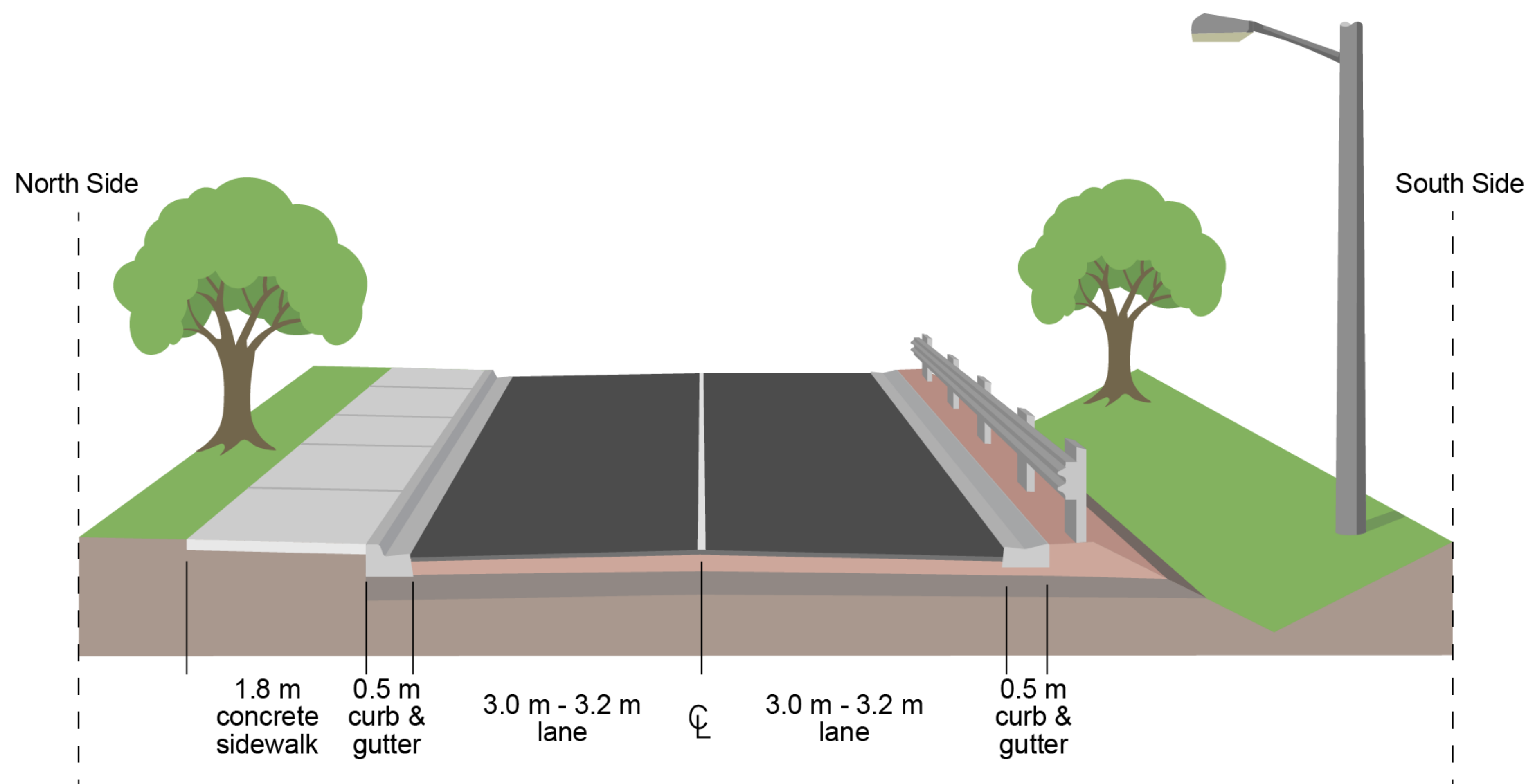
- ✓ Maintains general rural characteristic of road (mountable curbs and no sidewalk)
- ✓ Less impervious area (less stormwater runoff)

Disadvantages

- ✗ Does not address study objectives in enhancing road safety for all users and improving accessible active transportation
- ✗ Does not accommodate pedestrians
- ✗ No separation between pedestrians, cyclists and vehicular traffic
- ✗ Boulevard becomes snow storage area in winter



OPTION 2 – SIDEWALK



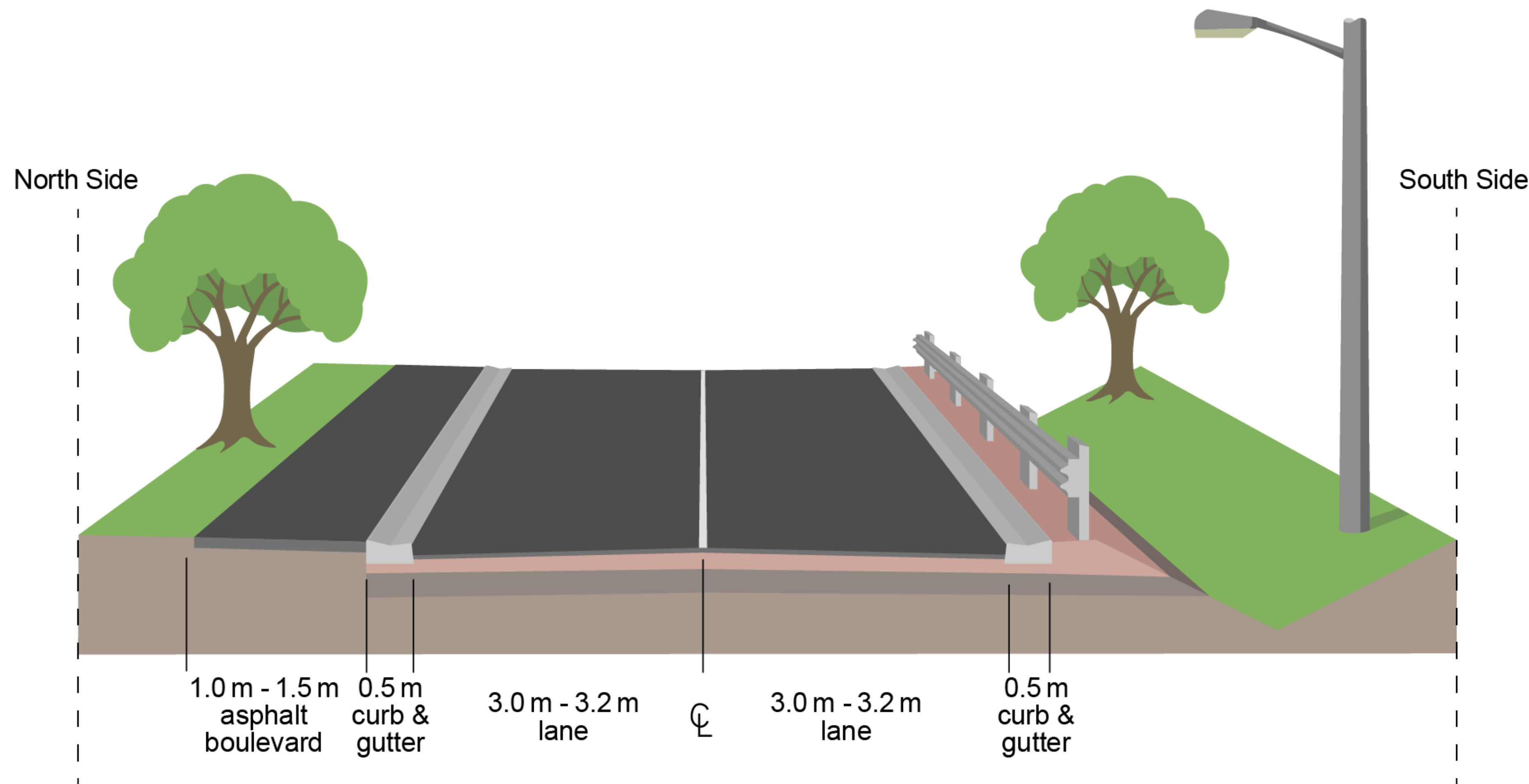
Advantages

- ✓ Provides dedicated pedestrian facility - Accessibility for Ontarians with Disabilities Act (AODA) compliant, accommodates mobility aids (ex. wheelchairs, wheeled walkers)
- ✓ Provides even surface to walk on
- ✓ Full barrier curb separates pedestrians from roadway and provides traffic calming benefits
- ✓ Will be maintained by the Town in the winter

Disadvantages

- ✗ Does not maintain general rural characteristic of road (barrier curbs and sidewalk)
- ✗ No separation between cyclists and vehicular traffic

OPTION 3 – ASPHALT BOULEVARD



Advantages

- ✓ Maintains general rural characteristic of road (mountable curbs and no sidewalk)
- ✓ Provides even surface to walk on (seasonal)

Disadvantages

- ✗ Not a dedicated pedestrian facility – not AODA compliant
- ✗ No separation between cyclists and vehicular traffic
- ✗ Boulevard becomes snow storage area in winter
- ✗ Mountable curb allows vehicles to drive onto boulevard, creating potential conflict with pedestrians

NEXT STEPS



- Review comment sheets received from this PIC
- Evaluate the alternative concepts presented and identify the preferred solution – check website for updates
- Consult with residents, stakeholders and technical agencies on the preferred solution
- Prepare and submit a Project File Report for 30 Day public review
- Proceed to detailed design (2022) and construction (2023) pending Council approval and budget

WE WANT YOUR INPUT!



Please submit your input on the pedestrian accommodation options in the comment sheet provided and place it in the comment box or submit via email by **July 6, 2022**.

THANK YOU FOR ATTENDING!
PLEASE FILL IN A COMMENT SHEET

Project Team Contacts:

Town of Caledon

Shun Cheung, P.Eng., PMP

Project Manager, Capital Infrastructure Engineering
Services

Tel: (905) 584-2272 x 4040

E-mail: shun.cheung@caledon.ca

R.V. Anderson Associates Limited

Winnie Wong, P. Eng., PMP., M.Eng.

Project Manager, Transportation

Tel: (416) 497-8600 x1471

E-mail: winnie.wong@rvanderson.com