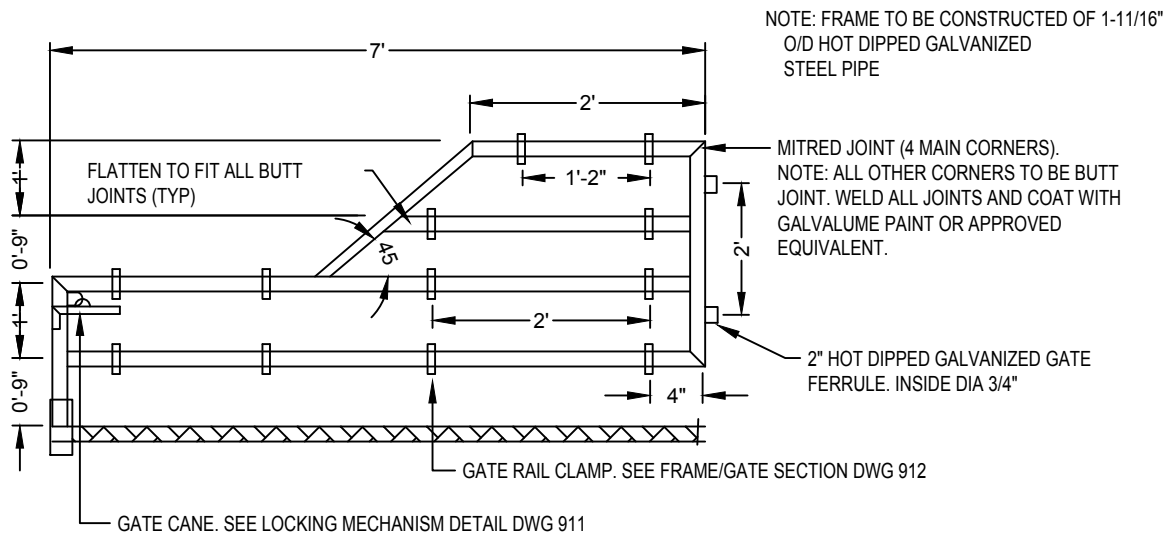


RAILTRAIL GATE



GATE FRAME

NO.	REVISION	APR'D	DATE
2	STANDARD No. 602 NOW 618		JAN 18
1	STANDARD No. 910 NOW 602		JUNE 08

TOWN OF CALEDON

APR'D: C.C.

DATE: DEC. 1999

TRAILWAY ENTRY GATE

DRAWN:

SCALE: N.T.S.

STANDARD No. 618