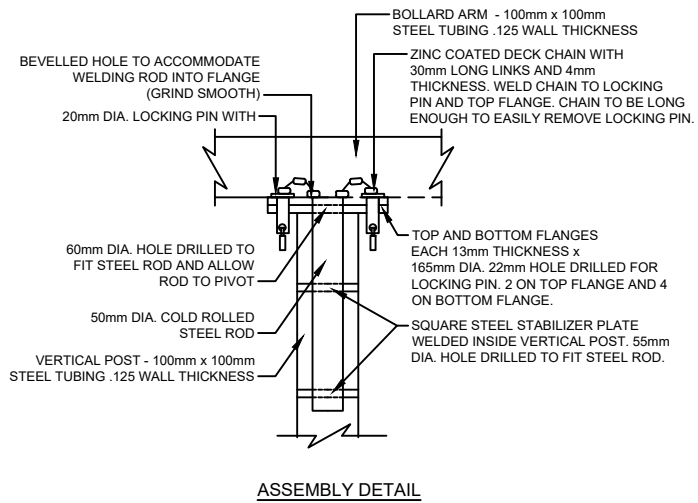
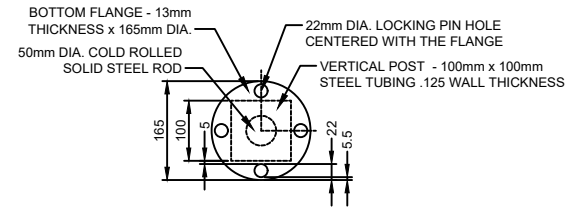


TOP FLANGE



ASSEMBLY DETAIL



BOTTOM FLANGE

NOTES:

1. ALL METAL AND HARDWARE TO BE GALVANIZED.
2. ALL WELDS TO BE GROUNDED SMOOTH.
3. ALL STEEL BOLLARDS TO BE POWDER COATED PRIOR TO INSTALLATION. COLOUR TO BE APPROVED BY TOWN STAFF.
4. DEVELOPER TO PROVIDE SHOP DRAWINGS OF STEEL BOLLARD TO TOWN FOR APPROVAL, PRIOR TO CONSTRUCTION.
5. ALL DIMENSIONS IN MILLIMETERS UNLESS OTHERWISE NOTED.

TOWN OF CALEDON								APR'D: B.B.	DATE: AUGUST 17
SWING BOLLARD ACCESS								DRAWN: B.M.	SCALE: N.T.S.
				NO.	REVISION	APR'D	DATE	STANDARD No. 610	