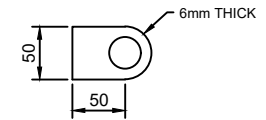


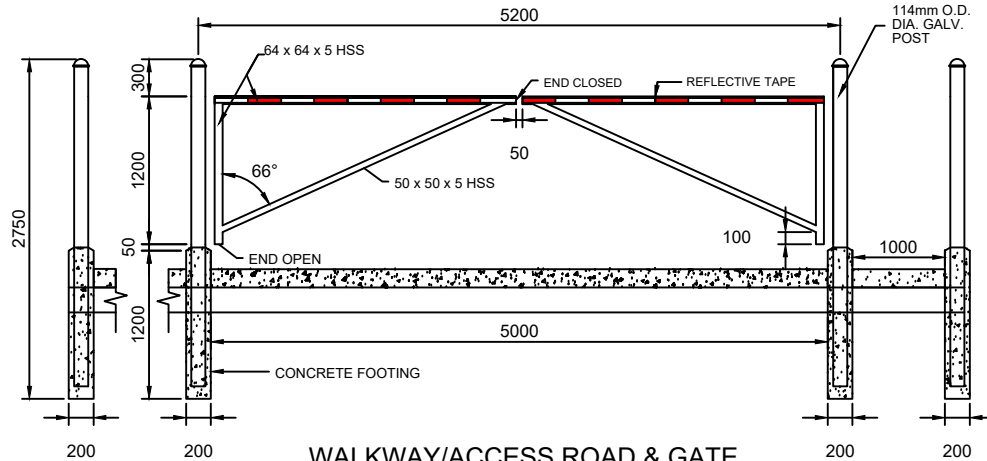
DETAIL A-A



HINGE PLATE DETAIL

NOTES:

1. ALL FENCE GATE(S) AND POSTS ARE TO BE HOT DIPPED GALVANIZED AND BLACK POLYETHYLENE COATED.
2. CONCRETE 32 MPa MIN. AFTER 28 DAYS
3. ALL JOINTS TO BE WELDED.
4. TYPICAL 2% MIN. CROSS FALL GRADE ON WALKWAY SURFACE.
5. WALKWAY TYPE SHALL CONFORM TO MOST RECENT TOWN STANDARD OR AS DIRECTED BY THE TOWN.
6. ALL JOINTS TO BE WELDED. WELDING SHALL CONFORM TO THE LATEST ISSUE OF C.S.A. SPECIFICATIONS W59.
7. HINGE PINS/BOLTS TO BE STAINLESS STEEL.
8. 3M BRAND (OR APPROVED EQUAL) REFLECTIVE GATE ARM MARKINGS, ALTERNATING RED AND WHITE DIAMOND GRADE - 50mm WIDTH (ALONG TOP RAIL).
9. ALL DIMENSIONS IN MILLIMETERS UNLESS OTHERWISE NOTED.
10. MINIMUM 6.0m WIDTH REQUIRED FOR EMERGENCY ACCESSES.



WALKWAY/ACCESS ROAD & GATE

TOWN OF CALEDON				APR'D: C.C.	DATE: 20/11/07
EMERGENCY ACCESS, MAINTENANCE ACCESS ROAD AND WALKWAY GATE	3	TEXT AND DRAWING REVISION	OCT 19	DRAWN: CTB	SCALE: N.T.S.
	2	TEXT AND DIMENSION REVISION	JAN 18		
	1	STANDARD No. 920 NOW 607	JUNE 08		
NO.	REVISION	APR'D	DATE	STANDARD No. 607	