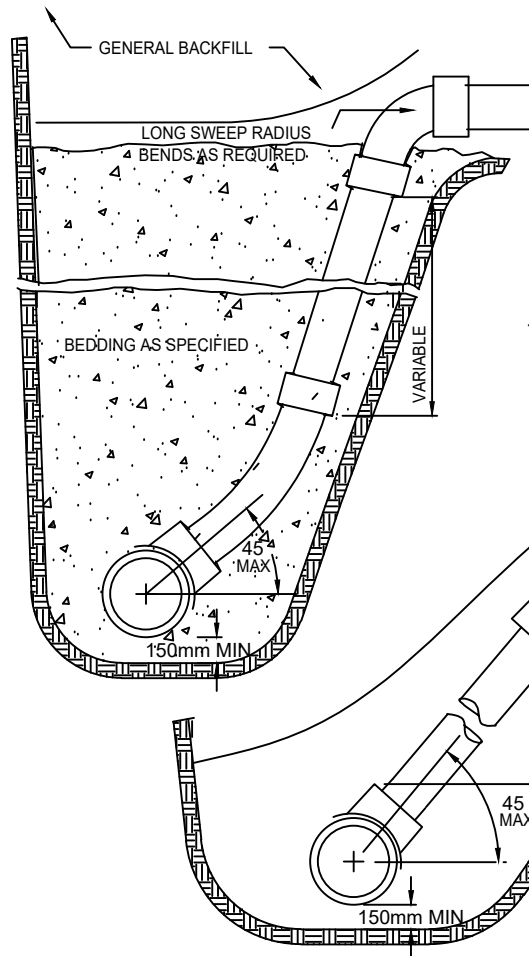
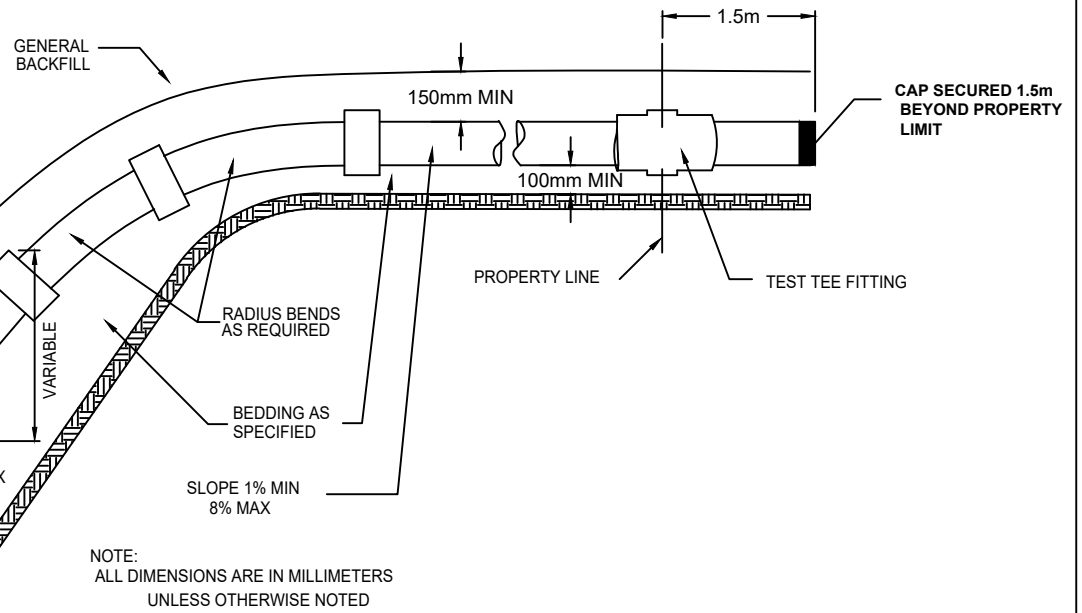


VERTICAL RISER



NOTES:

1. GRANULAR A BEDDING (OR APPROVED EQUIVALENT) TO BE PLACED AT MIN OF 150mm OF GRANULAR COVER OVER PIPE
2. FOR SEWERS SMALLER THAN 450mm, CONNECTIONS MUST BE MADE USING FACTORY MADE TEES; FOR ALL OTHER SIZES, EITHER FACTORY MADE TEES OR APPROVED SADDLES MAY BE USED
3. APPROVED CUT-IN TOOL MUST BE USED FOR FIELD MADE TEES
4. SERVICE CONNECTION MUST BE SECURELY PLUGGED AND EXTEND 1.5M BEYOND PROPERTY LINE
5. DOUBLE CONNECTIONS SHALL BE MADE USING A FACTORY MADE WYE (150mmx125mmx125mm) AND INSTALLED AS PER DETAIL FOR SERVICE CONNECTIONS IN COMMON TRENCH.
6. TEST TEE MUST BE MARKED "STORM"
7. STORM SERVICE CONNECTION TO MAINLINE TO BE WHITE
8. STORM SERVICE CONNECTION TO BE ON THE LEFT WHEN FACING THE HOUSE



NOTE:
ALL DIMENSIONS ARE IN MILLIMETERS
UNLESS OTHERWISE NOTED

TOWN OF CALEDON

**STORM SEWER
SERVICE CONNECTION**
FOR FLEXIBLE PIPE

NO.	REVISION	APR'D	DATE
4	DRAWING & TEXT REVISION		APR 19
3	DRAWING REVISION		JULY 18
2	TEXT REVISION		APRIL 18
1	STANDARD No. 700 NOW 500		JUNE 08

APR'D: C.C. DATE: DEC 1999

DRAWN: BJM SCALE: NTS

STANDARD No. 500