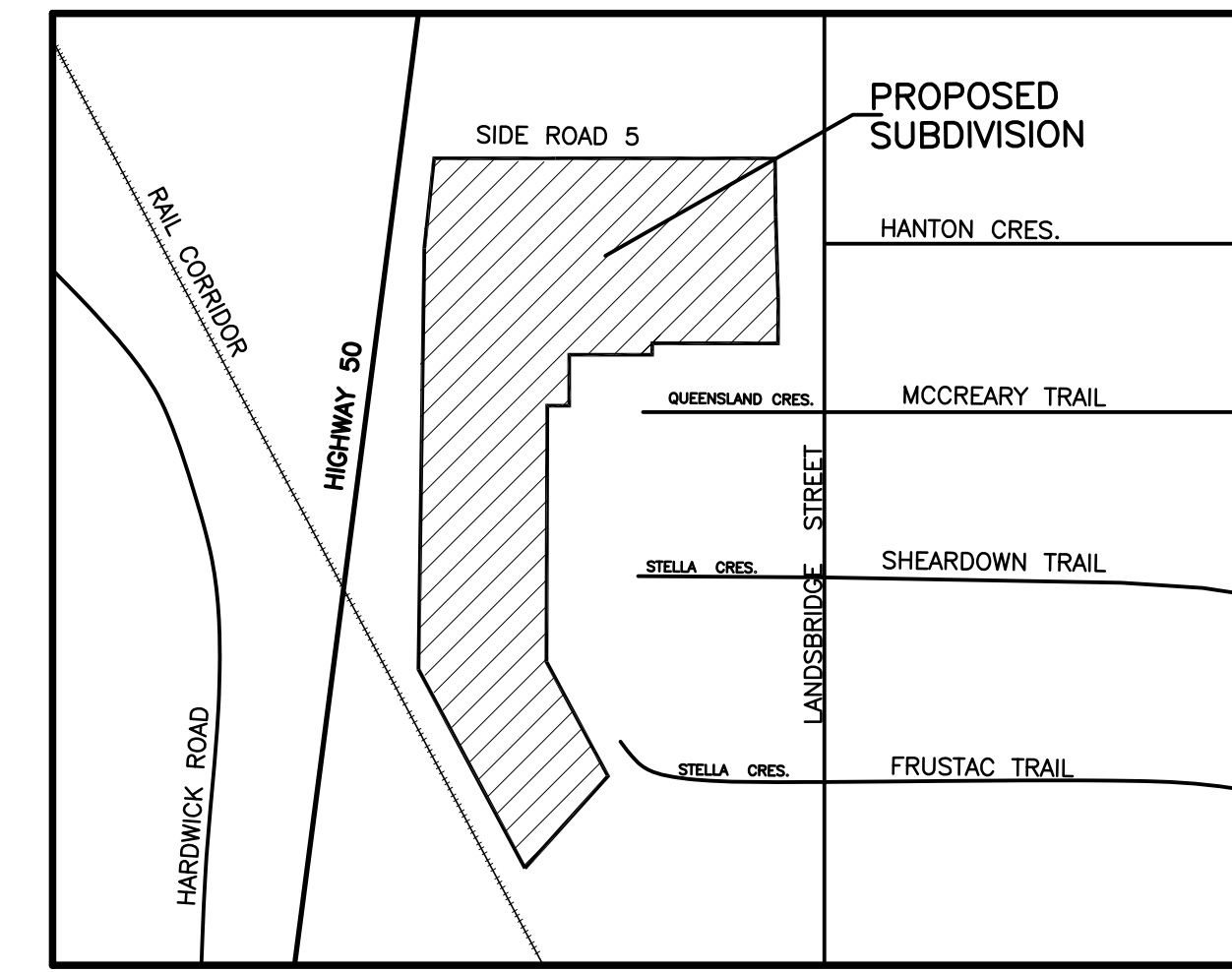


DRAFT PLAN OF CONDOMINIUM
PART OF LOT 5 AND PART OF THE ROAD
ALLOWANCE BETWEEN WEST HALVES
OF LOTS 5 AND 6 CONCESSION 7 AND
BLOCKS 153, 154, 165, 167, 181, 182
and PART OF BLOCK 178
REGISTERED PLAN 43M-1251
TOWN OF CALEDON
(GEOGRAPHIC TOWNSHIP OF ALBION, COUNTY OF PEEL)

DRAFT PLAN 21CDM-16002C



KEY PLAN

SECTION 51, PLANNING ACT,
ADDITIONAL INFORMATION

- A. AS SHOWN ON DRAFT PLAN
- B. AS SHOWN ON DRAFT PLAN
- C. AS SHOWN ON DRAFT PLAN
- D. SEE SCHEDULE OF LAND USE
- E. AS SHOWN ON DRAFT PLAN
- F. AS SHOWN ON DRAFT PLAN
- G. AS SHOWN ON DRAFT PLAN
- H. MUNICIPAL PIPED WATER AVAILABLE AT TIME OF DEVELOPMENT
- I. CLAY-LOAM
- J. AS SHOWN ON DRAFT PLAN
- K. SANITARY AND STORM SEWERS, GARBAGE COLLECTION, FIRE PROTECTION
- L. AS SHOWN ON DRAFT PLAN

SURVEYOR'S CERTIFICATE

I HEREBY CERTIFY THAT THE BOUNDARIES OF THE LAND TO BE SUBDIVIDED AS SHOWN ON THIS PLAN, AND THEIR RELATIONSHIP TO THE ADJACENT LAND ARE ACCURATELY AND CORRECTLY SHOWN.

HOLDING JONES VANDERVEEN INC.

DATE JUNE 9, 2016

THOMAS R. REED
ONTARIO LAND SURVEYOR

OWNER'S CERTIFICATE

I AUTHORIZE KLM PLANNING PARTNERS INC. TO PREPARE AND SUBMIT THIS DRAFT PLAN OF SUBDIVISION TO THE TOWN OF CALEDON FOR APPROVAL.

OWNER

VILLALAGO RESIDENCES INC.

C/O
TREASURE HILL
1681 LANGSTAFF ROAD
UNIT 1, VAUGHAN ONTARIO
L4K 5T3

NICHOLAS FIDEI
PRESIDENT

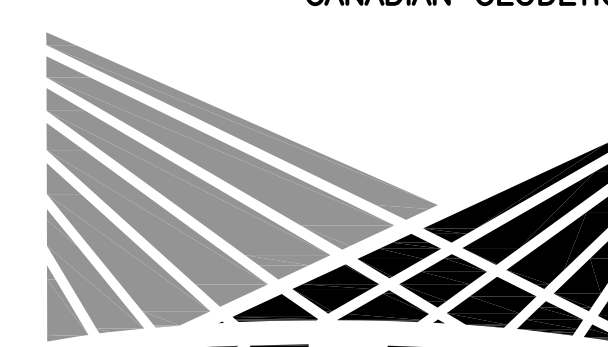
SCHEDULE OF LAND USE

TOTAL AREA OF LAND TO BE SUBDIVIDED = 2.569±Ha. (6.348±Acs)

	BLOCKS	LOTS	UNITS	±Ha.	±Acs.
CONDOMINIUM RESIDENTIAL					
BLOCKS 1-12	12		102	1.594	3.939
CONDOMINIUM COMMON ELEMENT AREAS				0.477	1.178
CONDOMINIUM LANEWAYS				0.498	1.231
TOTAL	12		102	2.569	6.348

□ COMMON ELEMENT

NOTE — ELEVATIONS RELATED TO
CANADIAN GEODETIC DATUM



PROJECT No. P-2658

SCALE 1:400 APRIL 25, 2017

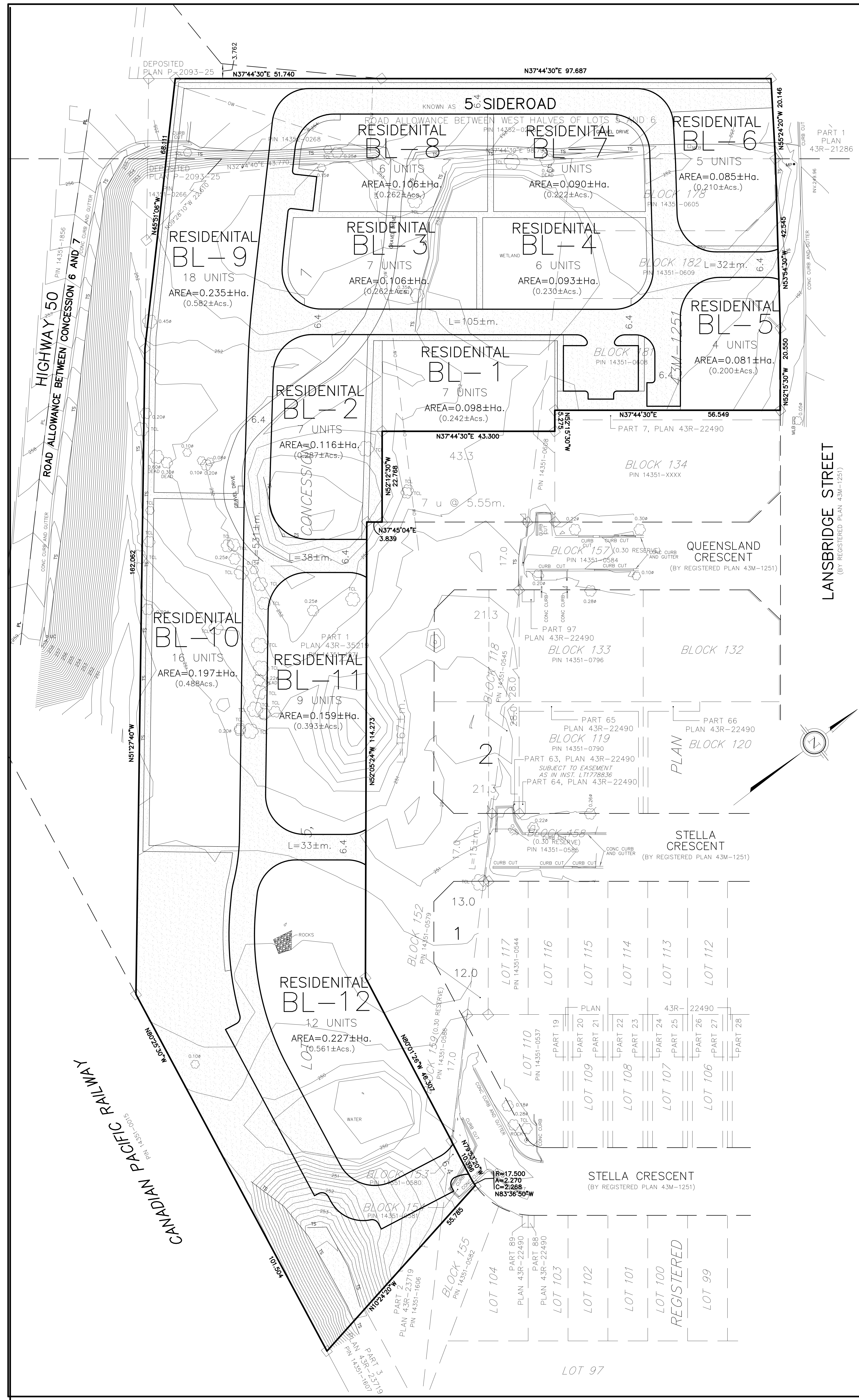
(2658-CONDO-DES3) X-REF: (CONDO-MAS2 & 2658TOPO)

KLM DWG. No. - 17:3

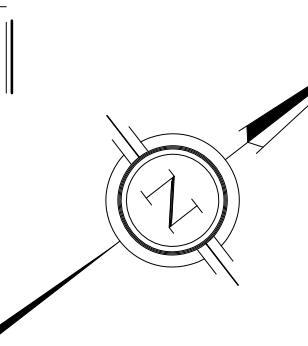
PLANNING PARTNERS INC. 64 JARDIN DRIVE - UNIT 1B, CONCORD ONTARIO L4K 3P3

TEL: (905)669-4055 FAX: (905)669-0097 design@klmplanning.com

Planning • Design • Development



LANSBRIDGE STREET
(BY REGISTERED PLAN 43M-1251)



LOT 97