

COMMUNITY LANDSCAPE CONCEPT



AIRPORT ROAD

- LEGEND
- (1-3) Parkette
 - (C) Community Park
 - (S) Stormwater Management Pond
 - (T) Trail System
 - Proposed Development Boundary
 - - - Subject Lands
 - ⋯ 400m Walking Radius (5-minute walk)

September 12, 2018



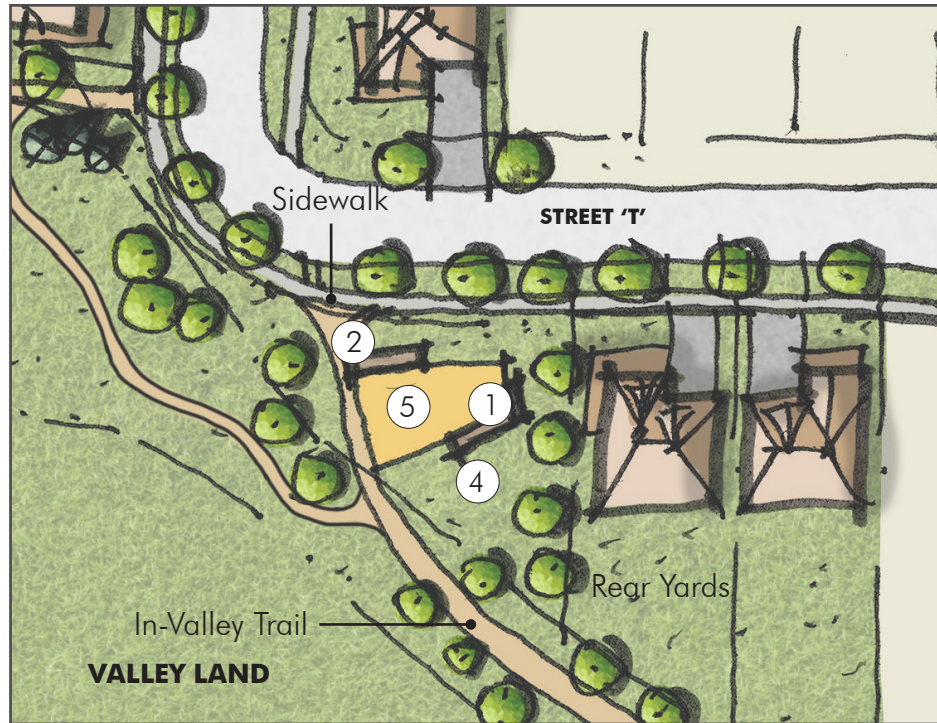
COMMUNITY PARK

The community park will be designed as a central focal point of the community. Its strategic location and adjacent built form support walkability through pedestrian friendly streetscapes. The surrounding streets provide clear vistas directly to the park reinforcing a high degree of connectivity from the residential built form to the park and continuing through to the in-valley trail system. Landscaping and other park programming elements will reflect the community character, creating a balance between the natural and built environment. Facilities provided within the community park will include passive and active recreation and may include the following (subject to a detailed facility fit):

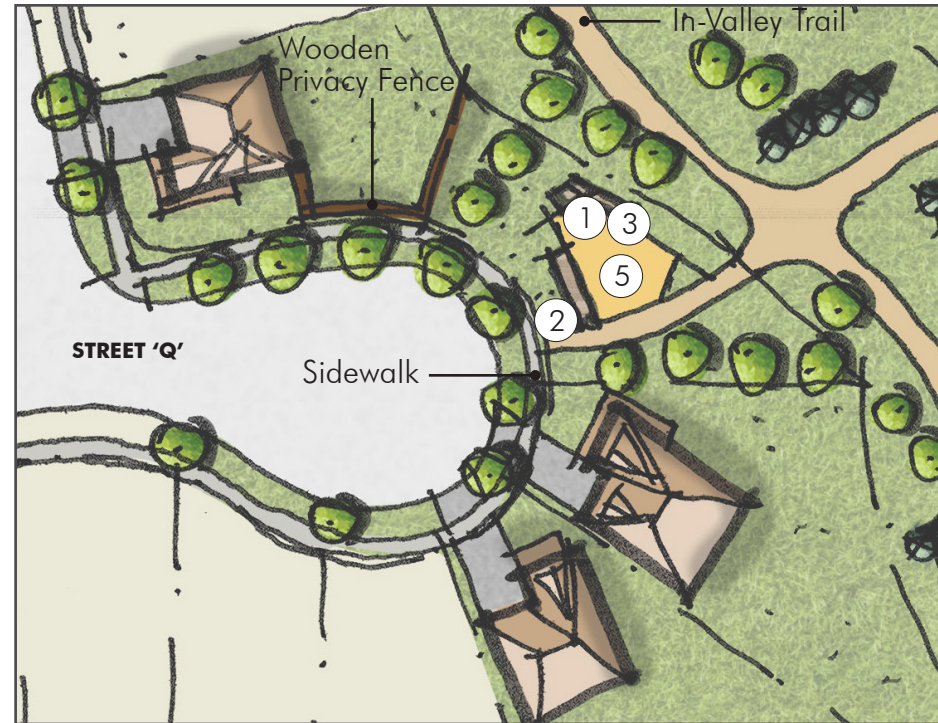
1. Junior & Senior Playgrounds
2. Splash Pad
3. Open Play Areas
4. Softball Field (small)
5. Shade Structures
6. Multi-Purpose Court
7. Seating
8. Looped Walking Pathway



1



2



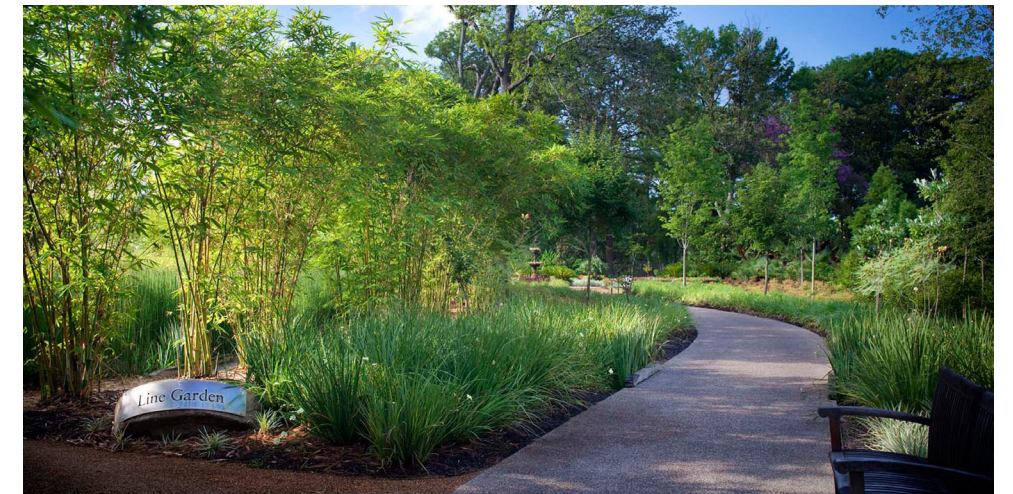
3

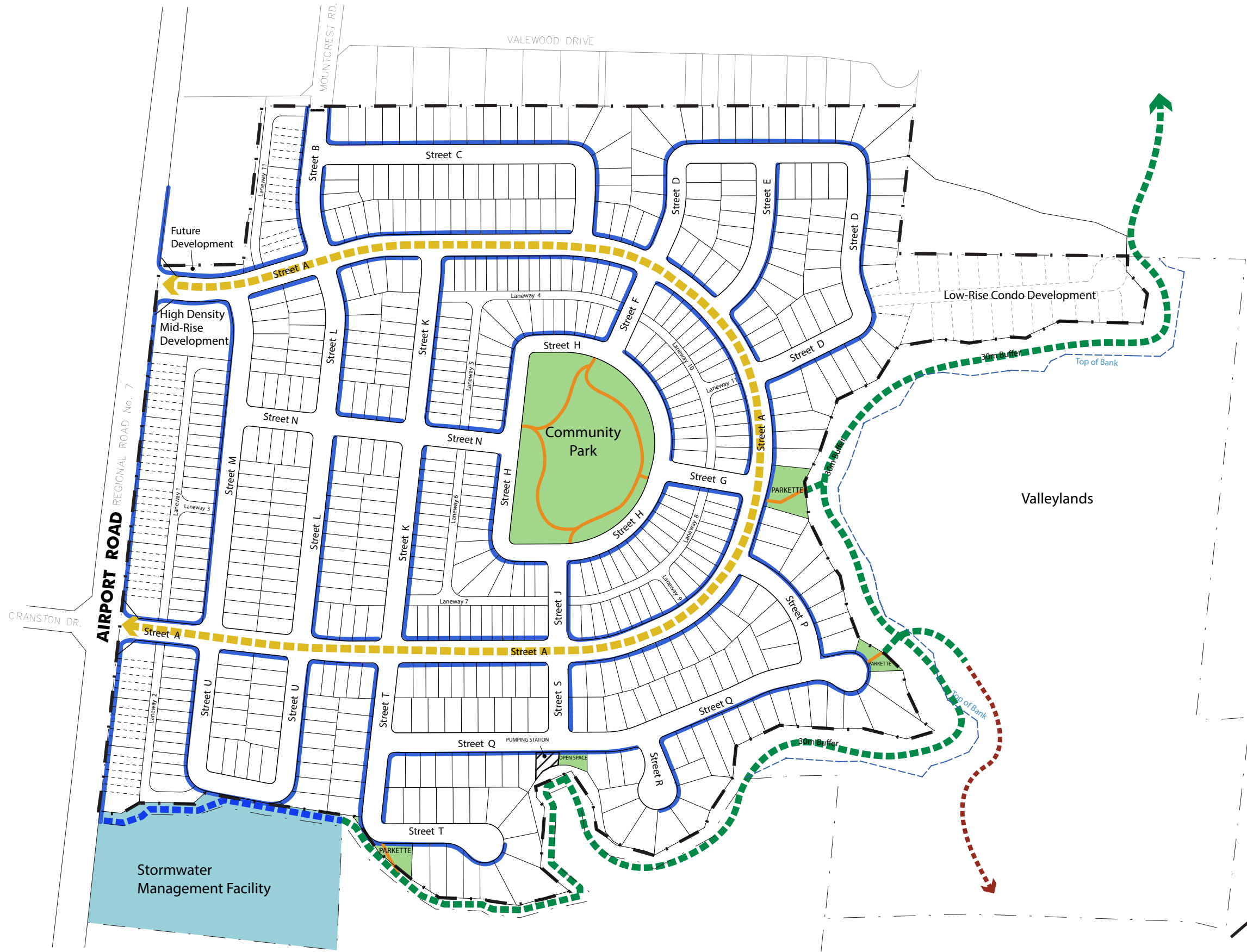


COMMUNITY PARKETTES

The community parkettes will be designed to provide primarily passive recreation through connections to the proposed in-valley trail system in the form of trail heads. Parkettes 2 & 3 are situated at high points of land overlooking the existing valley lands. These stunning views are supported and accented by providing lookouts, seating, shade structures and landscaping, where appropriate. Parkette 1 located at the south-west corner of the proposed development is in close proximity to the storm water management facility. This strategic location provides an off-road pedestrian connection into the community from the Airport Road trail head and also provides connection to the in-valley trail system continuing further east into the valley lands. Parkette 2 is situated between residential lots, with proximity to the in-valley trail connection to Innis Lake. Parkette 3 is located directly east of the Community Park, at the intersection of Street 'G' and Street 'A', facilitating visual and physical access to the valley lands from the Central Community Park. Some active recreation opportunities may be provided in any of these parkettes through the introduction of outdoor fitness equipment (subject to a detailed facility fit). Features included within the community parkettes may include the following:

- 1. Shade Structures & Seating
- 2. Trail Head Connections & Wayfinding Signage
- 3. Lookouts
- 4. Open Play Areas
- 5. Outdoor Fitness Equipment





- LEGEND**
- - - Proposed Development Boundary
 - · · Subject Lands
 - Sidewalks
 - Open Space Walkways
 - Bike Lanes (both sides of street)
 - - - In-Valley Trail
 - · · Existing Trail
 - - - Shared Stormwater Management Facility
 - Parks and Open Space
 - Stormwater Management Facility