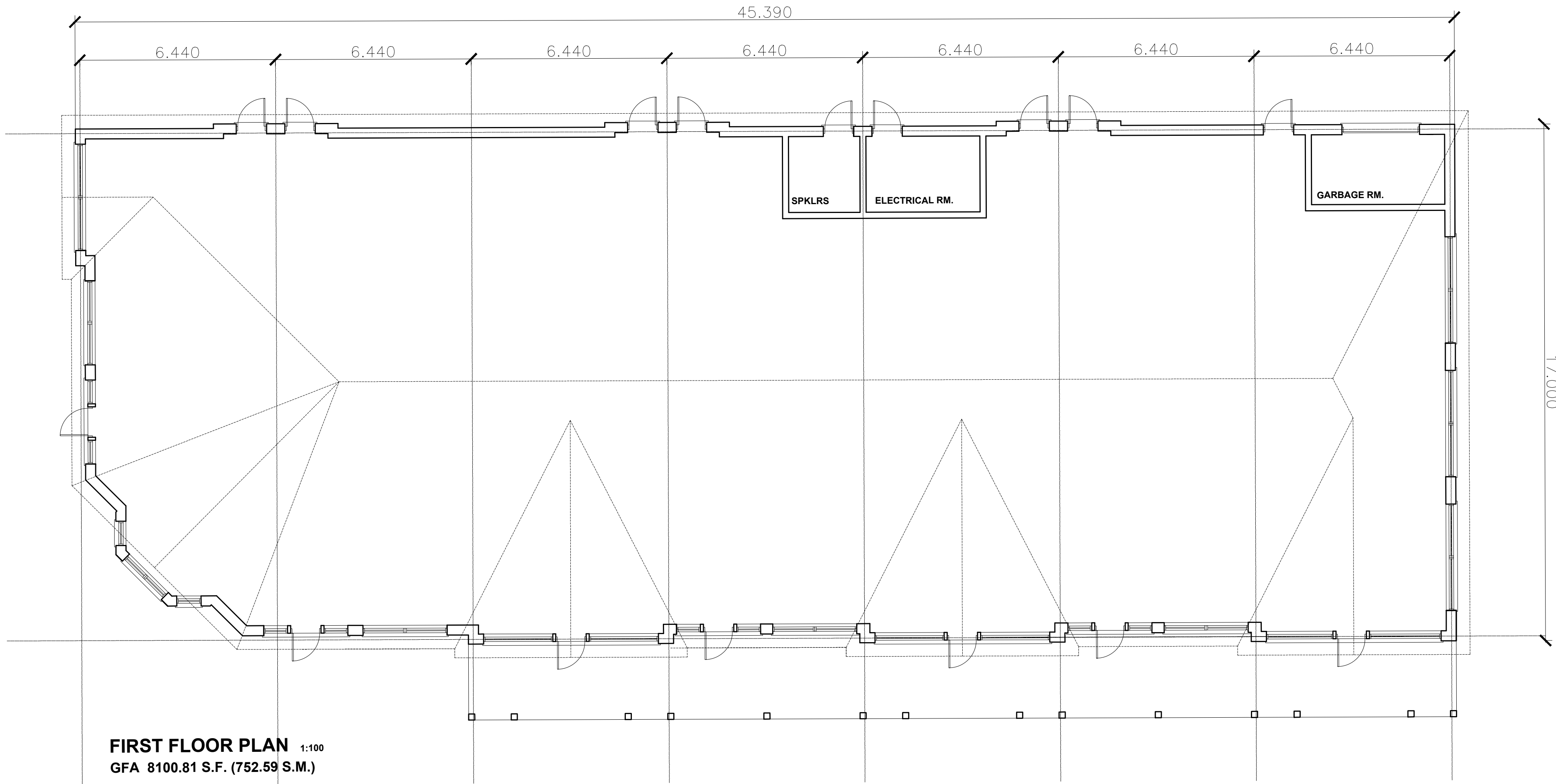
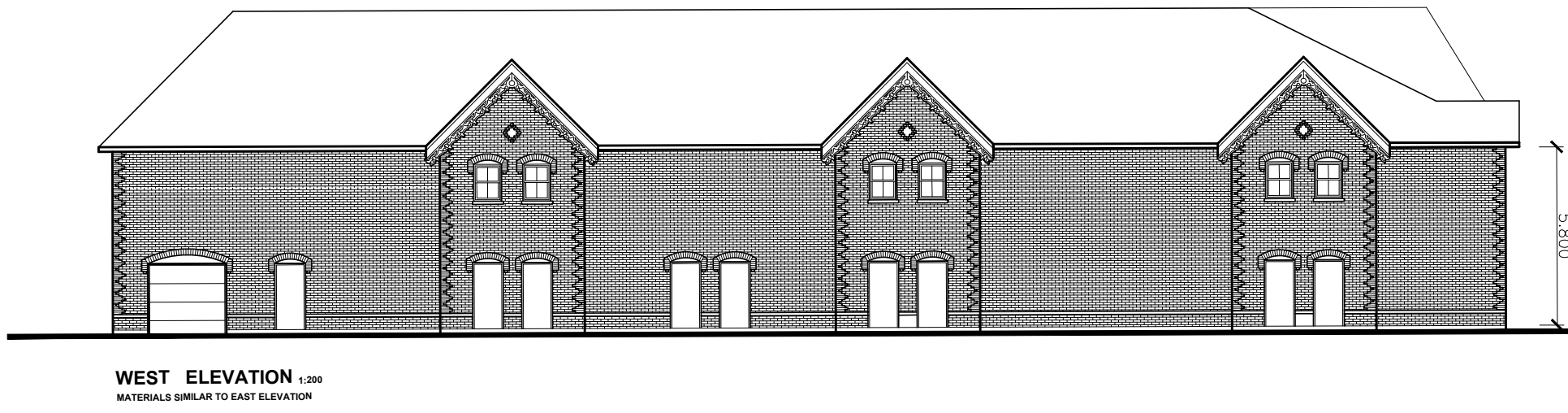
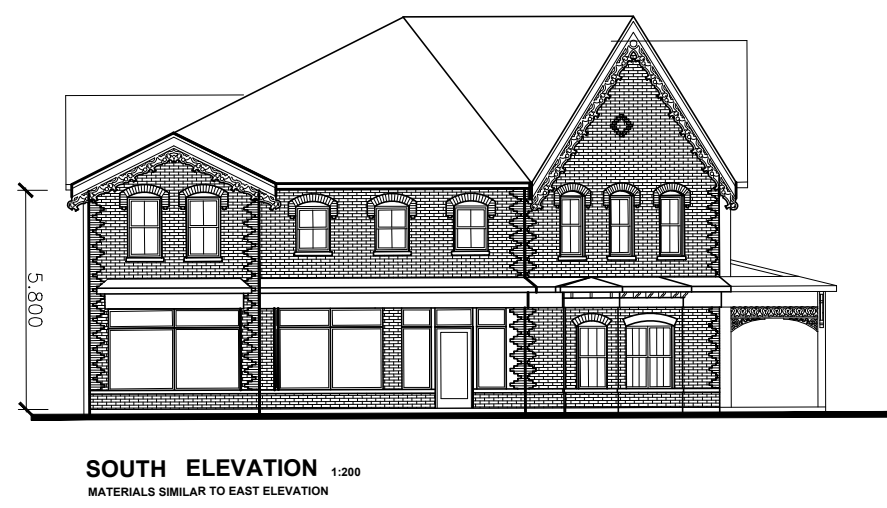


TOWN OF CALEDON
PLANNING
RECEIVED
Dec. 3, 2020



MP/09/20	FR	ISSUED FOR SPA RE-SUBMISSION
ALC/14/10	WT	REDUCTION IN BUILDING SIZE
Date	Ref.	Description
Revisions		
Drawn	WT	
Date	01/26/17	
Checked		
Approved		
Printed		
CAD File		
161338SK2.DWG		

The Architect has not been retained to carry out general review of the work, and assumes no responsibility for the failure of the contractor or sub-contractors to carry out the work in accordance with the Contract Documents. Single pages of documents are not to be read independently of all pages of the Contract Documents.

The contractor shall verify all dimensions on the Contract Documents. Any discrepancies prior to the commencement of the work, under no circumstances shall the Contractor or sub-contractors proceed in uncertainty. Do not scale drawings.



SP	
CLIENT	
SHACCA CALEDON HOLDINGS/ GLEN SCHNARR	
700-10 KINGSBRIDGE GARDEN CIRCLE MISSISSAUGA ONTARIO L5R 3K6 905 568 8888	
PROJECT	
RETAIL/COMMERCIAL BUILDING	
16114 AIRPORT ROAD CALEDON ONTARIO	
Sheet Title	PLANS&ELEVATIONS
Scales	1:400
Sheet Number	16-1338-SK2