

Tree No.	Species	dbh (cm)	Diameter of Canopy (m)	Biological Health	Structural Condition	Recommended Action	Comments
1	Acer saccharum	75	9	M	ML	RC	Main leader dead, rot in main trunk, UB(S), potential hazard.
2	Acer saccharum	17	7	H	H	RC	UB(N)
3	Acer saccharum	78	15	M	M	RC	MB with IB, dieback on main leader, small DBs
4	Acer saccharum	49	10	MH	MH	RC	GIWOOT, and large DB broken
5	Acer saccharum	14	MH	MH	P	P	MB, small and large DB broken
6	Acer saccharum	67	14	M	ML	P	ZL, IB from base to main union
7	Prunus serotina			L	L	R	70% Dead, IB, large DB from base, Potential Hazard
8	Prunus serotina	2x33, 42, 36	10	MH	ML	P	ML, IB, vine throughout canopy
9	Prunus serotina	14, 19, 34	6	M	ML	P	ML, extreme vine, Canopy 50% dead, top broken
10	Prunus serotina	23	5	M	ML	P	vine, top broken
11	Ulmus americana	64	15	M	MH	P	large DB
12	Prunus serotina	25, 28	6	L	L	P	50% canopy
13	Craetagus sp.	43, 45	7	M	ML	P	IB, hollow, many holes, vine, BB
14	Prunus serotina	63	11	M	ML	RC	old leader dead, few large DB, TD 20%, UB(S)
15	Ulmus americana	35	8	M	ML	RC	large DB broken, WS
16	Ulmus americana					R	DEAD
17	Acer saccharum	38	12	H	H	P	grows through fence, medium DB
18	Acer saccharum	29	6	H	MH	P	UB(S)
19	Acer saccharum	54	12	MH	MH	P	grows through fence, IB
20	Acer saccharum	36	7	H	H	P	UB(N)
21	Prunus serotina	19, 21, 30, 31	8	M	M	P	ML, UB(S), small holes, DB
22	Prunus serotina	50	12	M	ML	P	PL at base, vine extreme, top broken, large DB, Monitor
23	Ulmus americana	29	8	M	M	P	vine
24	Prunus serotina	17, 24	7	M	ML	P	vine extreme
25	Prunus serotina	41, 54	14	M	M	P	large DBs, ZL, TD 15% at base
26	Prunus serotina	49, 51	10	M	ML	P	ZL, one leader 50% dead, top broken on other leader, TD 30%
27	Tilia americana	17, 22	8	MH	MH	P	ZL, grafting branches
28	Ulmus americana	50	L	L	L	P	DEAD
29	Prunus serotina	56	15	H	H	P	large DB broken
30	Ulmus americana	31	8	M	MH	P	minor vine, WS

31	Ulmus americana			L	L	R	DEAD
32	Prunus serotina	39	8	M	M	P	
33	Prunus serotina	37	10	M	M	P	SU, large BB
34	Craetagus sp.	4x20, 28	10	MH	M	P	ML, IB
35	Ulmus americana	51	15	MH	H	P	vine
36	Ulmus americana	32	10	M	ML	P	IB, V, WS
37	Prunus serotina	55	12	M	L	P	top broken, vine, many BB
38	Makus sp.	30	8	M	ML	P	low branching, vine, many BB
39	Prunus serotina	42	10	M	ML	P	top broken, many BB
40	Prunus serotina	49	7	M	ML	P	top dead, vine, few large DB
41	Acer saccharum	70	12	MH	MH	P	large DB, hole
42	Prunus serotina	30	8	M	M	P	PL
43	Prunus serotina	31	7	M	ML	P	partly SU, vine
44	Ulmus americana	20	6	M	M	P	vine
45	Ulmus americana	15, 15	8	M	M	RC	ZL, vine
46	Acer saccharum	87	10	L	L	R	UB(S), one leader broken off, 50% TD, potential hazard
47	Acer saccharum	96	16	MH	MH	P	a few large DB, Monitor
48	Acer saccharum	19, 26, 26	8	M	M	P	grows from foundation wall, ML, IB
49	Ulmus pumila	29, 34, 39, 40	12	L	L	R	many BB, WS, UB(N), hazard
50	Acer saccharum	55	13	M	M	P	large DB, UB(S), Monitor
51	Acer saccharum	59	12	M	M	P	PL, Monitor
52	Acer saccharum	69	16	M	ML	P	10" (N), IB with rot, 2 holes, crack,
53	Ulmus pumila	38, 48	8	L	L	R	many large BB falling apart, hazard, WS, ZL, IB,
54	Ulmus pumila	52	10	L	L	R	wound at base, mostly dead canopy, WS
55	Ulmus pumila	51	15	L	L	R	WS, 70% hazard
56	Ulmus pumila	63	15	L	L	R	WS, all branches dead, hazard
57	Ulmus pumila	55	10	L	L	R	UB (W)
58	Ulmus pumila	47	10	L	L	R	UB(S)
59	Acer saccharum	26	7	H	H	P	
60	Ulmus pumila	36	12	L	L	R	45sol (NE), Sugar Maple growing from base
61	Acer saccharum	56	9	M	M	P	large dead limb, UB(N), Monitor
62	Acer saccharum	88	14	MH	MH	P	ML, IB, a few large BB, UB(N), Monitor
63	Acer saccharum	90	12	MH	M	P	Some large DBs and BBs, MB, UB(V)
64	Pinus sylvestris	31	5	M	M	P	sapsucker damage, many small DBs, Monitor
65	Pinus sylvestris	21	4	L	ML	P	75% Canopy dead
66	Pinus sylvestris	37	5	M	M	P	many lower DBs
67	Pinus sp.	25	5	H	M	P	ZL
68	Pinus sylvestris	27	4	M	ML	P	sparse canopy
69	Prunus serotina	30	7	H	M	P	ML
70	Pinus sylvestris	24	4	M	M	P	

71	Pinus nigra	29	6	M	ML	P	80% D
72	Ulmus americana	44	14	M	M	P	some small DBs
73	Pinus sylvestris	32	7	L	ML	P	Vine and sparse canopy
74	Makus sp.	17, 23	5	M	ML	P	WS, ZL, IB
75	Pinus sylvestris	55	8	H	MH	P	
76	Ulmus americana	32	12	M	M	P	Some small DBs
77	Makus sp.	30	6	M	ML	P	Vine heavy throughout, crack
78	Pinus sylvestris	35	5	M	M	P	
79	Pinus sylvestris	37	5	M	M	P	
80	Pinus sylvestris	29	5	MH	M	P	
81	Pinus sylvestris	26	5	MH	M	P	
82	Pinus sylvestris	31	6	MH	M	P	
83	Makus sp.	-60	8	M	L	P	split in trunk separating, hollow, many BBs
84	Acer saccharum	30	6	H	H	P	
85	Prunus serotina	33	5	M	L	P	ML, many large DBs, one leader totally dead
86	Craetagus sp.	5x20	8	M	M	P	ML
87	Craetagus sp.	32, 35	8	M	L	P	hollow, ZL, IB, canopy vigorous
88	Ulmus pumila	28	8	M	M	P	several small DBs
89	Craetagus sp.	-40	6	M	M	P	ML, limb broken off, small DBs

### TREE INVENTORY LEGEND

Biological Health  
H (High) - No apparent diseases or symptoms, moderate to high vigour.  
M (Medium) - Minor diseases and/or symptoms, moderate vigour.  
L (Low) - Major disease and/or symptoms, poor vigour.

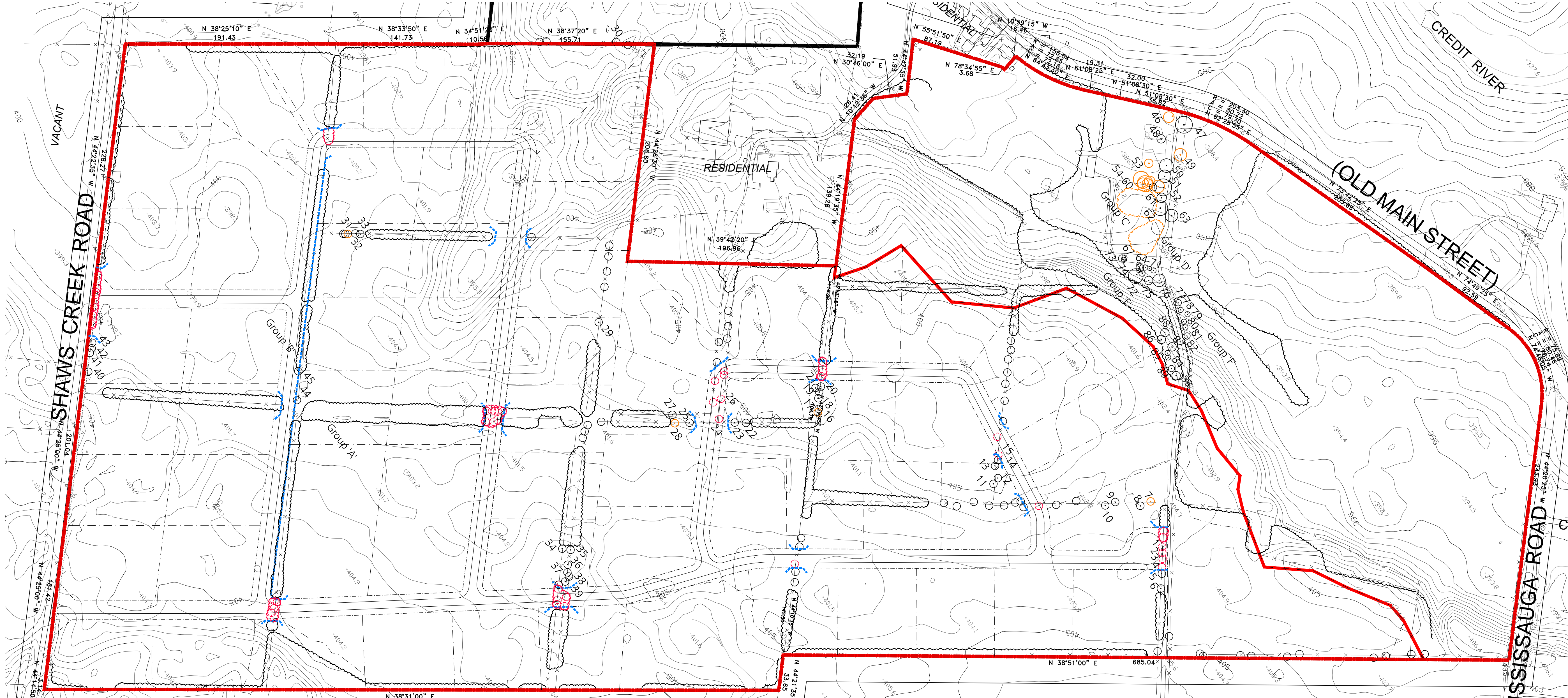
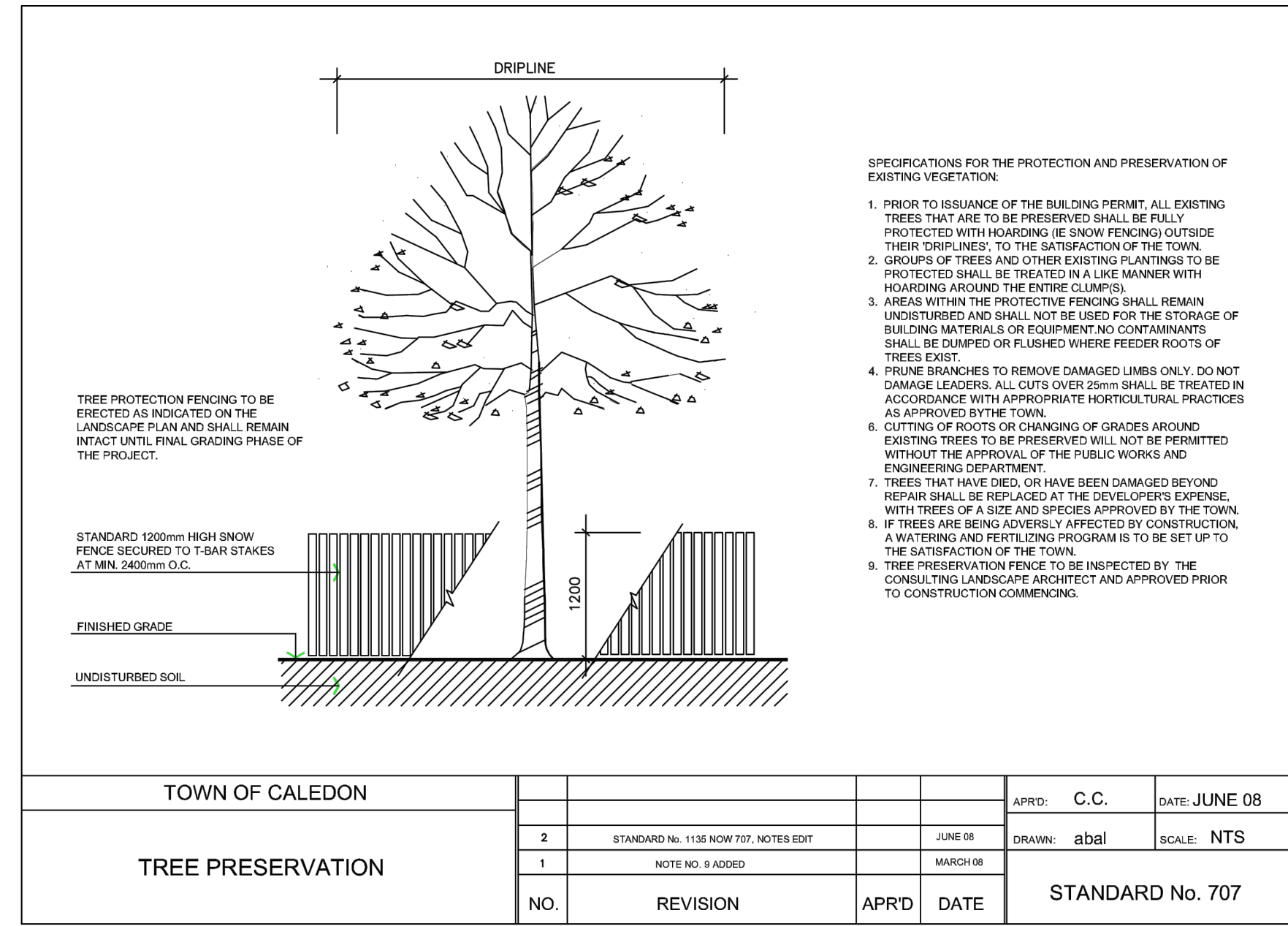
Structural Condition  
H (High) - No defects, well-developed crown.  
M (Medium) - Minor structural defects.  
L (Low) - Major structural defects.

#### Recommended Action

P - Preserve  
R - Remove for poor condition  
RC - Remove for Construction  
R\* - Remove with Neighbours Approval  
R\*\* - Remove with Town's Approval  
T - Transplant

#### Comments

B - Borer  
BF - Backfilled  
CS - Compacted soil  
DB - Dead branches  
G - Girdling  
HA - Hazard  
IB - Included bark  
\*LS - Lean showing direction (i.e. LS=lean south)  
ZL - 2 leaders or codominant stems  
MB - Multibranching  
MS/ML - Multistem  
PL - Pruned limbs  
SU - Suppressed crown  
TB - Torn/broken branch  
TD - Trunk damage  
TH - Top heavy  
UB - Unbalanced crown (N,S,E,W indicates weighted side of crown)  
V - Vine growing in tree  
WB - Witches broom growth  
WP - Woodpecker damage  
WS - Watersprouts  
ZZ - Zigzag trunk  
%D - % crown is dead



TREE INVENTORY PLAN  
1:500

### LEGEND

- Property Line
- Tree Protection - Snow Fence Hoarding
- Existing Vegetation Grouping to Remain
- Existing Vegetation Grouping to be Removed
- Existing tree to be preserved
- Existing tree to be removed
- Existing tree to be removed Dead, girdled or dangerous.

**CERTIFIED ARBORIST**  
**ISA**  
Jon Woodside  
ISA Certified Arborist  
ON-1439A  
Baker Turner Inc.  
Nick Taylor  
ISA Certified Arborist  
ON-2068A  
Baker Turner Inc.

REVISIONS

DATE	DESCRIPTION
Feb 6, 2018	Issued for Submission
July 2, 2014	Issued for Client Review

NOTE: Contractor is to check and verify all dimensions and conditions on the project, and is to immediately report any discrepancies to the landscape architect before proceeding with the work.

**OMLA**  
ONLINE MAPPING ASSOCIATION OF LANDSCAPE ARCHITECTS

**BTi**  
Baker Turner Inc.

Landscape Architecture | Site Design  
Suite 300  
8501 Mississauga Road  
Brampton Ontario L6Y 5G8  
Tel: (905) 453-9398  
Fax: (905) 453-9376  
email: tba@bakerturner.com

Project Title  
**THE MANORS OF BELFOUNTAIN**  
BELFOUNTAIN, ON

TREE INVENTORY & PRESERVATION PLAN

Date	Issued
JUNE 2014	
Job Number	Drawn By
BTI-1381	JW/NT
Scale	Checked By
As Shown	TB
Sheet Number	File Number
TR.1 of 1	