

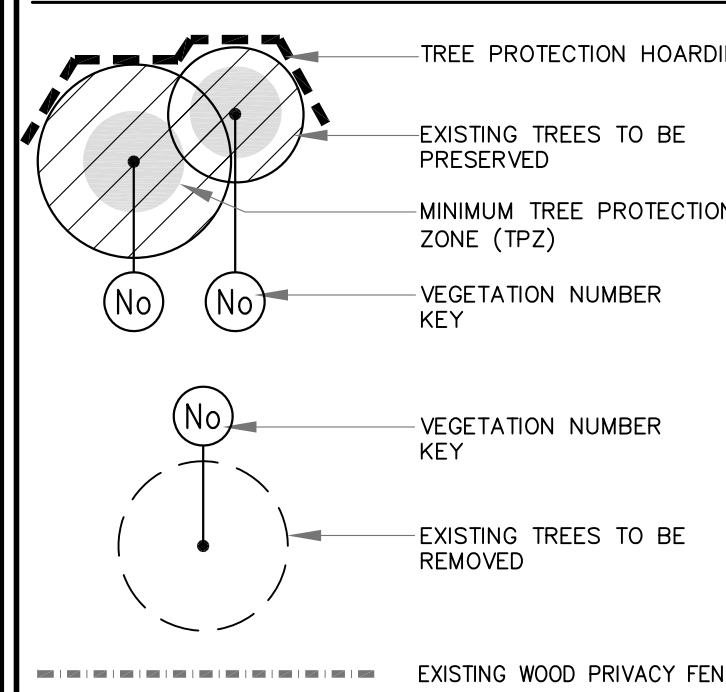
**GENERAL NOTES**

- VERIFY ALL DIMENSIONS.
- DO NOT SCALE DRAWINGS.
- REPORT ANY DISCREPANCIES, DISCOVERED ERRORS, OR OMISSIONS TO THE LANDSCAPE ARCHITECT BEFORE PROCEEDING.
- IT IS ADVISED THAT CONTRACTORS CONTACT THE LANDSCAPE ARCHITECT PRIOR TO CONSTRUCTION TO ENSURE THE USE OF THE LATEST REVISED DRAWINGS.
- DRAWINGS AND SPECIFICATIONS ARE THE PROPERTY OF THE LANDSCAPE ARCHITECT.

**KEY MAP**



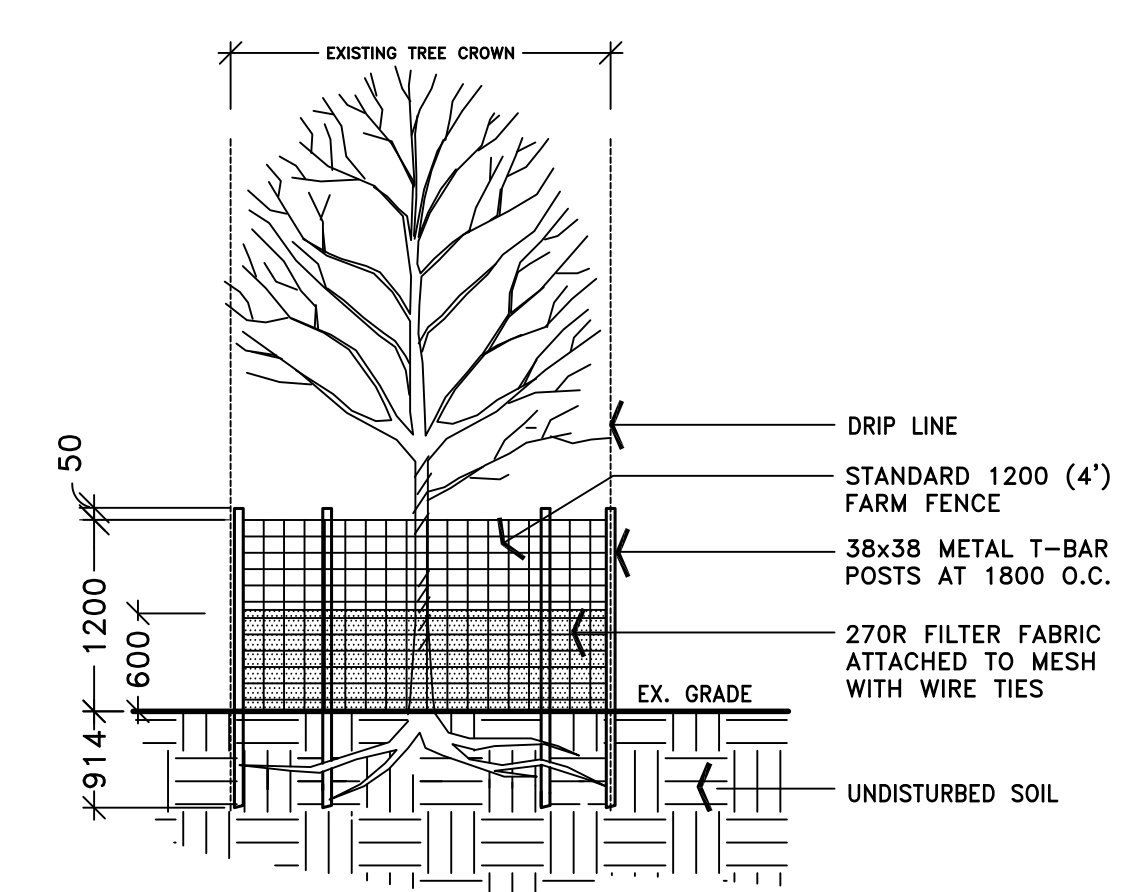
**LEGEND**



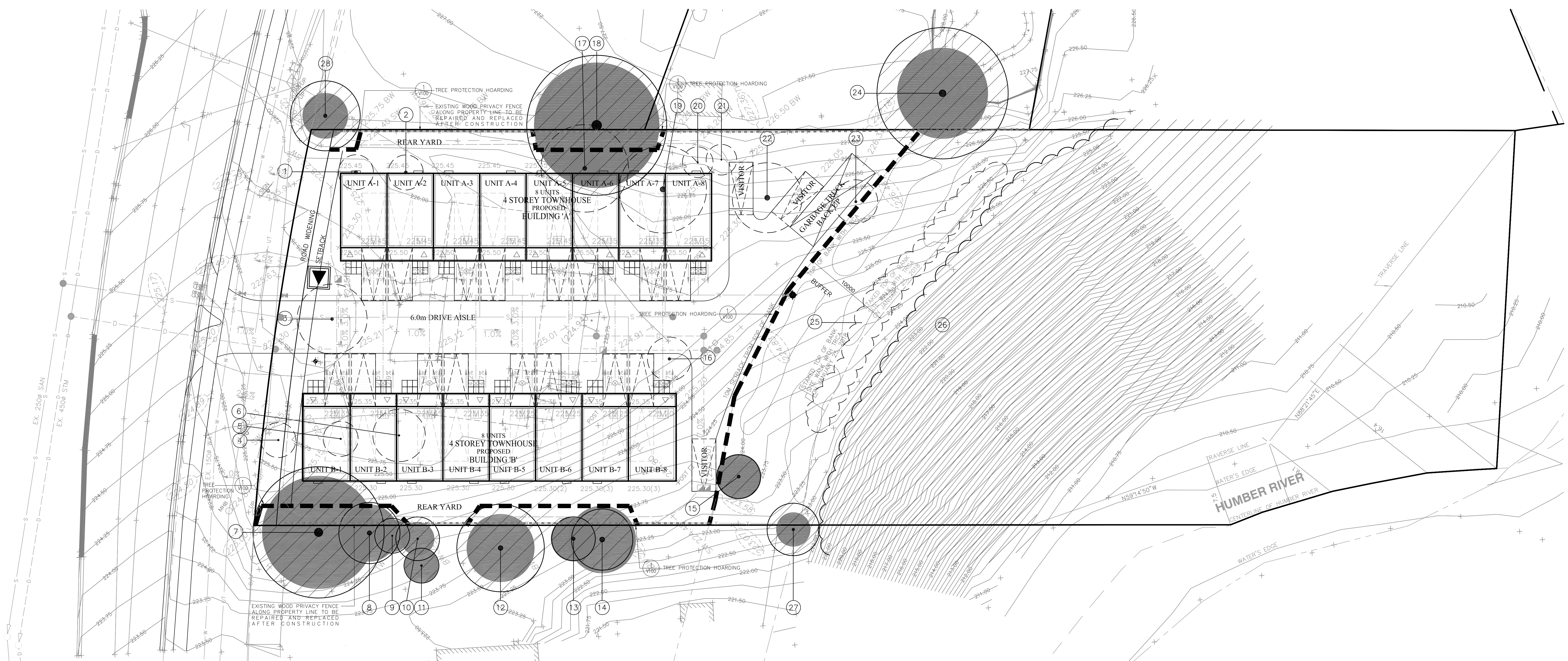
Tree No.	Common Name	Botanical Name	Diameter (cm)	Crown Dia. (m)	Health G:R:P	Structure	Comments	TPZ	Action	Tree No.
1	Colorado Blue Spruce	<i>Picea pungens</i>	37	4	P	Poor Form	Tree uprooted in recent wind storm, fallen over, root system exposed damage to fence.	2.4	Remove	1
2	Colorado Blue Spruce	<i>Picea pungens</i>	34	4	P	Poor Form	Tree uprooted in recent wind storm, fallen over, root system exposed damage to fence.	2.4	Remove	2
3	Norway Maple	<i>Acer platanoides</i>	32	8	G	Broad Form	Good health, minor broken branching in canopy.	2.4	Remove	3
4	Ivory Silk Lilac	<i>Syringa reticulata</i>	19	4	G	Good Form	Codominant stems with crossing branching, callus on trunk near base of the tree.	1.8	Remove	4
5	Ivory Silk Lilac	<i>Syringa reticulata</i>	17	4	G	One Sided Form	Crowded/uneven canopy, lack of sunlight, crossing branching, minor dieback on shaded side.	1.8	Remove	5
6	Apple Sp.	<i>Malus</i>	18	6	G	Broad Form	Pruned for structure, elevated canopy, good form.	1.8	Remove	6
7	Manitoba Maple	<i>Acer negundo</i>	94	15	F	Broad Form	Located on adjacent property, leaning, multiple leaders, suckering from trunk, base, and structural branches, broken branches and minor damage throughout.	6	Preserve	7
8	Manitoba Maple	<i>Acer negundo</i>	48	7	F	Narrow Form	Located on adjacent property, leaning, multiple leaders, suckering from trunk, base, and structural branches, broken branches and minor damage throughout.	3	Preserve	8
9	Manitoba Maple	<i>Acer negundo</i>	14.9, 10	4	P	Multi Stemmed	Located on adjacent property, multiple stems from base, poor health, dead branching throughout, weak structure at stem unions.	1.8	Preserve	9
10	Manitoba Maple	<i>Acer negundo</i>	14.11, 17, 10	5	P	Multi Stemmed	Located on adjacent property, multiple stems growing from decaying stump, one stem broken and leaning on fence, weak structure at stem unions.	1.8	Preserve	10
11	Red Cedar	<i>Juniperus Virginiana</i>	21, 15	4	F	Pyramidal Form	Located on adjacent property, crowded and shaded by adjacent trees, dieback on the east side due to crowding, minor needle discoloration in some areas of the canopy.	1.8	Preserve	11
12	Larch	<i>Larix decidua</i>	51	10	G	Good Form	Located on adjacent property, lower branches pruned to elevate canopy, minor dieback.	3.6	Preserve	12
13	White Spruce	<i>Picea glauca</i>	36	5	F	One Sided Form	Located on adjacent property, crowded by adjacent pine, dieback on south side due to adjacent tree growth, minor needle dieback on other areas of the tree.	2.4	Preserve	13
14	White Pine	<i>Pinus strobus</i>	55	7	G	Broad Form	Located on adjacent property, broken branching, dieback on lower branches on the north due to crowding from adjacent tree, broken branches present.	3.6	Preserve	14
15	Colorado Spruce	<i>Picea pungens</i>	33	5	F	Upright Form	Good form, minor dieback on lower branching. Branching starts at grade, minor needle discoloration present.	2.4	Preserve	15
16	Colorado Spruce	<i>Picea pungens</i>	29	5	F	Upright Form	Good form, minor dieback on lower branching. Branching starts at grade, minor needle discoloration present.	2.4	Remove	16
17	Norway Spruce	<i>Acer platanoides</i>	45	10	F	Upright Form	Mature tree, lower branches pruned to elevate canopy 2m +/-, minor dieback throughout.	3	Remove	17
18	Manitoba Maple	<i>Acer negundo</i>	110	16	F	Broad Form	Located on adjacent property, Multiple leaders, structural branches pruned, crowded by adjacent tree, dieback where shaded from evergreens, suckers present on trunk and structural branches.	6.6	Preserve	18
19	White Spruce	<i>Picea glauca</i>	60	10	F	Pyramidal Form	Located on adjacent property, Multiple leaders, structural branches pruned, crowded by adjacent tree, dieback where shaded from evergreens, suckers present on trunk and structural branches.	3.6	Remove	19
20	Colorado Spruce	<i>Picea pungens</i>	15	3.5	P	One Sided Form	Declining due to crowding/shade from adjacent trees, major dieback and sparse needles throughout.	1.8	Remove	20
21	Colorado Spruce	<i>Picea pungens</i>	14	3.5	P	One Sided Form	Declining due to crowding/shade from adjacent trees, major dieback and sparse needles throughout.	1.8	Remove	21
22	Colorado Spruce	<i>Picea pungens</i>	57	8	F	Pyramidal Form	Mature tree, lower branches pruned to elevate canopy 2m +/-, minor dieback throughout.	3.6	Remove	22
23	Ivory Silk Lilac	<i>Syringa reticulata</i>	26	5	F	Asymmetrical Form	Leaning, contorted trunk, small canopy, mechanical damage present.	1.8	Remove	23
24	Manitoba Maple	<i>Acer negundo</i>	76	15	F	Broad Form	Located on adjacent property, Multiple leaders, structural branches pruned, leaning, suckers present on trunk and structural branches.	4.8	Preserve	24
25	False Spirea	<i>Sorbaria sorbifolia</i>	1.5	G	Shrub Form/Hedge	Deciduous hedge along the top of bank limit.	N/A	Remove	25	
26	Mixed Vegetation			F	Woodlot/Valley	Wood lot along steep slope consisting mainly of Manitoba maple. Some white spruce present at east limits near adjacent properties and flowering dogwood and buckthorn as understorey plant material.	Top of Bank	Preserve	26	
27	Cherry Sp.	<i>Prunus sp.</i>	27	6	P	Broad Form	Located on adjacent property, declining, 80% dead, one-sided canopy, crowded by wood lot on bank.	1.8	Preserve	27
28	Norway Maple	<i>Acer platanoides</i>	37	8	F	Asymmetrical Form	Located on adjacent property to the East, canopy pruned due to utility conflicts, additional trees of the same species continue in a headgrowth along property, damage due to fallen spruce.	2.4	Preserve	28

**TREE PRESERVATION NOTES:**

- ALL EXISTING TREES TO REMAIN ON SITE, OR ON ADJACENT PROPERTIES WHICH MAY BE AFFECTED, SHALL BE PROTECTED WITH HOARDING, I.E. PROTECTIVE FENCING, ERECTED BEYOND THEIR "DRIP LINE" OR OTHERWISE SPECIFIED, PRIOR TO THE COMMENCEMENT OF SITE CLEARING AND STRIPPING, TO THE SATISFACTION OF THE LANDSCAPE ARCHITECT AND THE LOCAL AUTHORITY. GROUPS OF TREES AND OTHER EXISTING PLANTINGS TO BE PROTECTED SHALL BE TREATED IN A LIKE MANNER WITH HOARDING AROUND THE ENTIRE CLUMP(S). AREAS WITHIN THE PROTECTIVE FENCING SHALL REMAIN UNDISTURBED AND SHALL NOT BE USED FOR THE STORAGE OF BUILDING MATERIALS, STRUCTURES OR EQUIPMENT. THIS SHALL BE COMPLETED PRIOR TO THE COMMENCEMENT OF SITE CLEARANCE, DEMOLITION, OR ANY TYPE OF CONSTRUCTION.
- NO CABLES OF ANY TYPE SHALL BE WRAPPED AROUND OR INSTALLED IN TREES. SURPLUS SOIL, EQUIPMENT, VEHICLES, DEBRIS OR MATERIALS SHALL NOT BE PLACED OVER ROOT SYSTEMS OF THE TREES WITHIN THE PROTECTIVE FENCING. NO CONTAMINANTS WILL BE DUMPED OR FLUSHED WHERE FEEDER ROOTS OF TREES EXIST.
- THE DEVELOPER OR THEIR AGENTS SHALL TAKE EVERY PRECAUTION NECESSARY TO PREVENT DAMAGE TO TREES OR SHRUBS TO BE RETAINED.
- WHERE LIMBS OR PORTIONS OF TREES ARE REMOVED TO ACCOMMODATE CONSTRUCTION WORK, THEY WILL BE REMOVED CAREFULLY BY A CERTIFIED ARBORIST IN ACCORDANCE WITH ACCEPTED ARBORICULTURAL PRACTICE. MEASURES SHALL BE TAKEN TO PREVENT ANY FURTHER DAMAGE.
- WHERE ROOT SYSTEMS OF PROTECTED TREES ARE EXPOSED OR DAMAGED BY CONSTRUCTION WORK, THEY SHALL BE TRIMMED NEATLY AND THE AREA BACKFILLED WITH APPROPRIATE MATERIAL TO PREVENT DESICCATION.
- IF NECESSARY, THE TREES WILL BE GIVEN AN OVERALL PRUNING TO RESTORE THE BALANCE BETWEEN ROOTS AND TOP GROWTH OR TO RESTORE THE APPEARANCE OF THE TREES.
- IF GRADES AROUND TREES TO BE PROTECTED ARE LIKELY TO CHANGE, THE OWNER SHALL BE REQUIRED TO TAKE SUCH PRECAUTIONS AS DRY WELLING, RETAINING WALLS AND ROOT FEEDING TO THE SATISFACTION OF THE LANDSCAPE ARCHITECT AND THE LOCAL AUTHORITY.



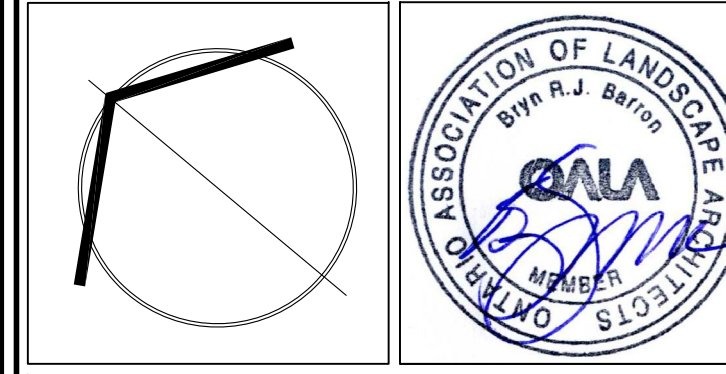
1.2m HT FARM FENCE HOARDING  
TREE PROTECTION HOARDING



**MATTHEW J. REICHALT**  
International Society of Arboriculture  
Certified Arborist #CAN-1708A  
Date: MAY 24, 2018

1	2018-10-11	ISSUED FOR SUBMISSION	BB
No.	DATE	REVISION	BY

It is the responsibility of the Contractor and/or Owner to ensure that the drawings with the latest revisions are used for construction.



**SBK** 5770 HURONTARIO STREET, SUITE 320  
MISSISSAUGA, ONTARIO, L5R 3S5  
T: 416.695.4949 F: 905.712.3101  
WWW.STRYBOS.COM

**STRYBOS BARRON KING**  
LANDSCAPE ARCHITECTURE

PROJECT:  
**PROPOSED RESIDENTIAL DEVELOPMENT  
11 TOWNHOUSE UNITS**  
336 KING STREET EAST, BOLTON, ONTARIO

DRAWING TITLE:  
**EXISTING TREE INVENTORY &  
PRESERVATION PLAN AND  
ARBORIST REPORT**

SCALE: 1 : 200	PROJECT No. 18-5186
DATE: MAY 04, 2018	DRAWING No. V100
DRAWN BY: SS	
CHECKED BY: BB	

PLAN 43R -13419