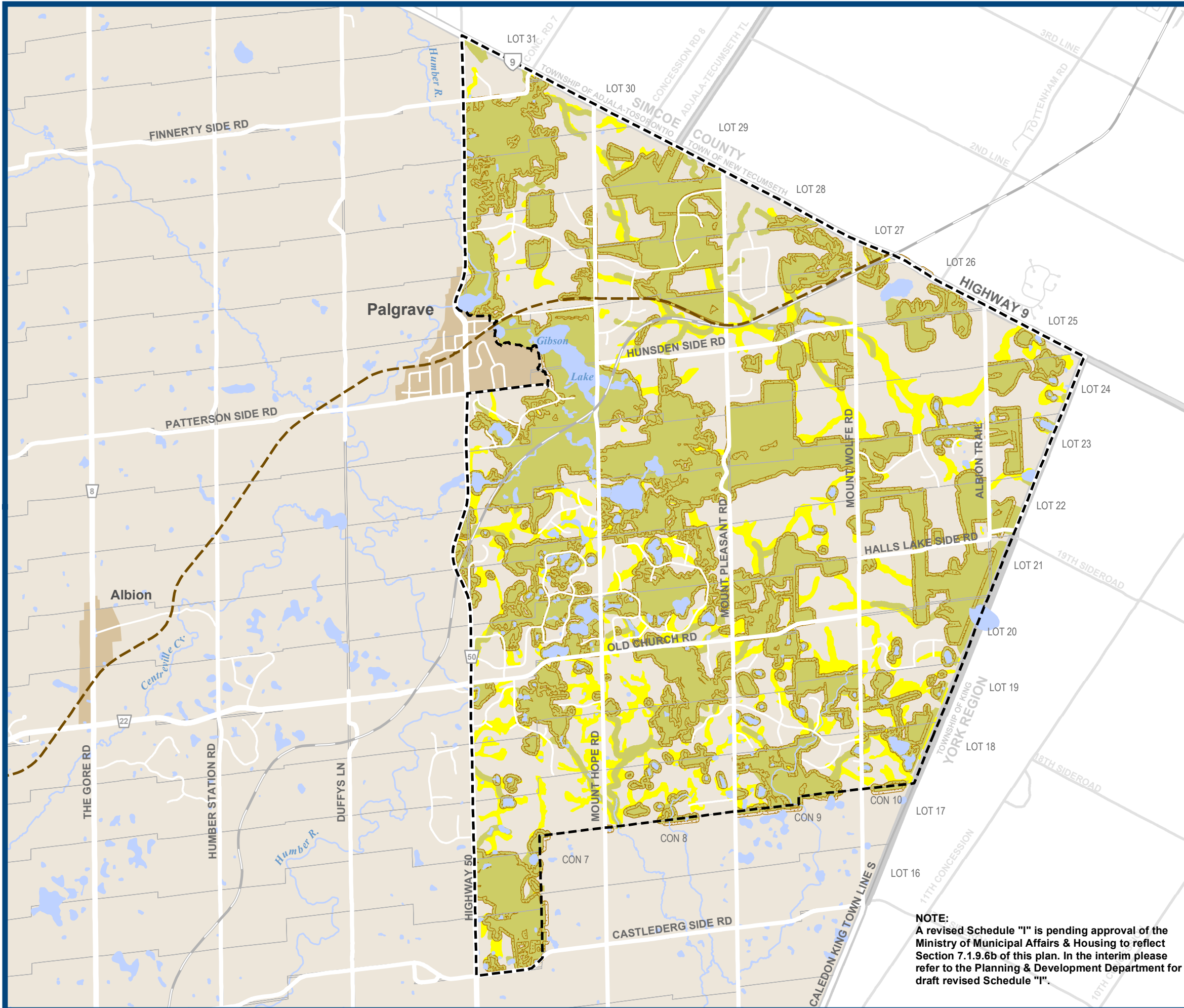




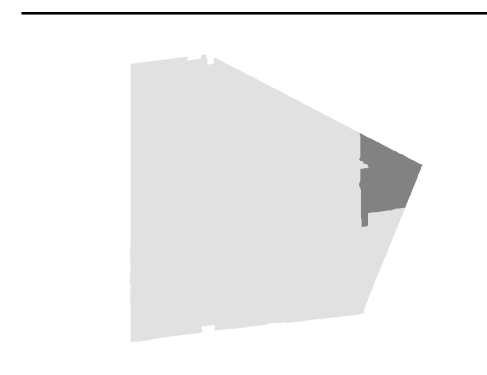
Schedule I

PALGRAVE ESTATE RESIDENTIAL COMMUNITY ENVIRONMENTAL ZONING



- Environmental Zone 1
- Environmental Zone 2
- Palgrave Estate Residential Community
- Minimum Vegetation Protection Zone
- Settlement Area

- Provincial Road
- Regional Road
- Local Road
- Railway
- Caledon Railway



Base Data Source: Town of Caledon

NOTE:
A revised Schedule "I" is pending approval of the Ministry of Municipal Affairs & Housing to reflect Section 7.1.9.6b of this plan. In the interim please refer to the Planning & Development Department for draft revised Schedule "I".

