

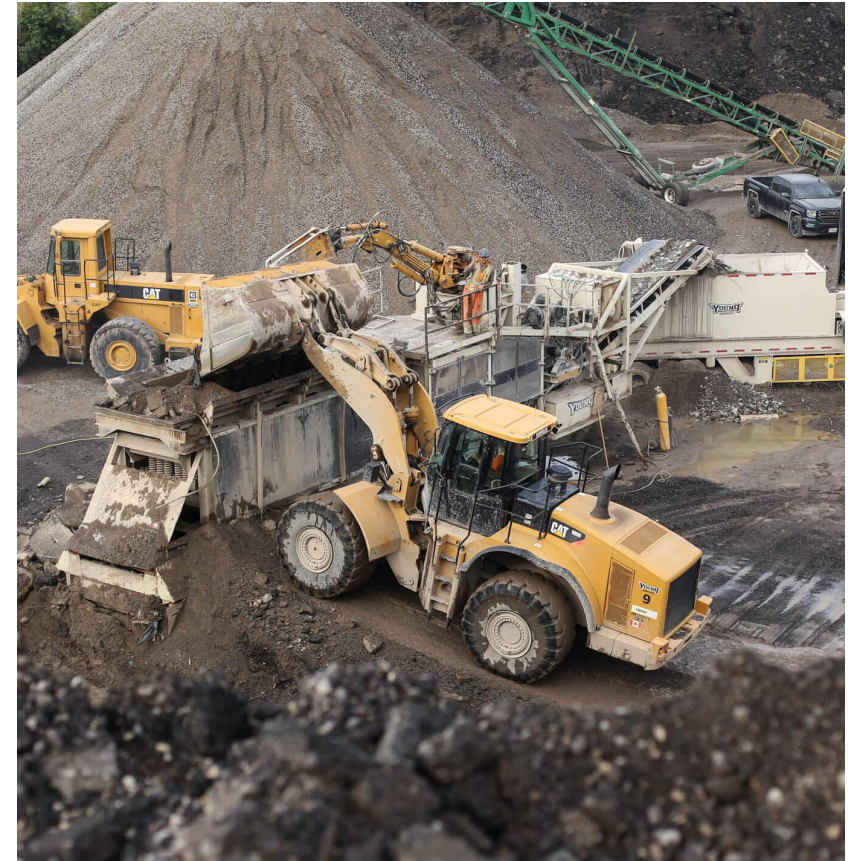
# Caledon Aggregate Advisory Group Meeting

---

Theme: Aggregate Recycling, Asphalt and Concrete Plants

# Aggregate Recycling

- Recycled aggregate generally includes concrete and asphalt recovered from building demolition, road reconstruction, and other infrastructure projects.
- Processing utilizes similar equipment to aggregate processing (crushing and screening)
- Can be a “stand-alone” use (i.e., not in a licenced pit or quarry)
- MNRF policy requires that recycled areas are delineated on the site plan. Where the materials include recycled asphalt, storage must be a minimum of 2 m above the high-water table and a minimum of 30 metres from any surface water body
- Removal of recycled materials must be ongoing and the use must cease once aggregate has been depleted from the site.
- Maximum amount shall be the lesser of 20,000 tonnes or 10 per cent of the maximum quantity of aggregate allowed to be removed from the site annually,
- In the Town of Caledon, aggregate resources recycling facilities are defined as “Waste Processing Facility” meaning a facility that receives, stores and/or processes waste materials for the purpose of creating new products or materials. The use is permitted in “MD-Waste Management” Industrial Zones.



# Concrete Plants

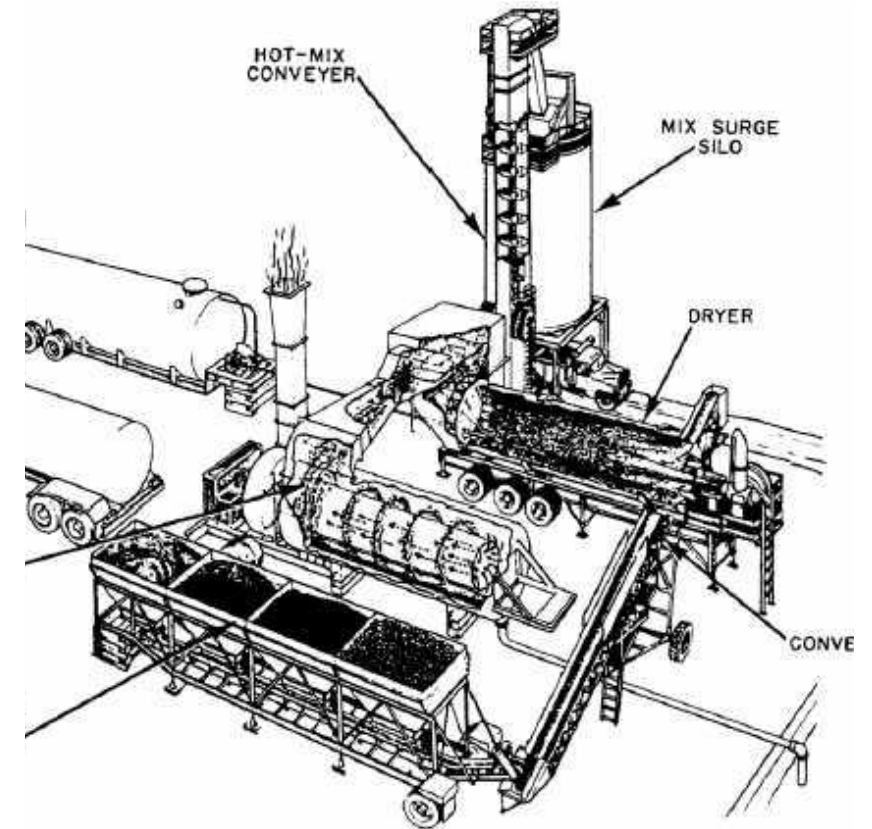
---

- Concrete batch plants (or ready mix concrete plants) combine gravel, sand, water and cement by weight to produce various mixes according to the specific requirement
- Generally require site specific zoning and, where located in a licenced pit or quarry, must be delineated on the Site Plans
- ECA approval is required from MECP with conditions specific to each operation
- ECA applications must include emissions (air quality) and an acoustic impact assessment
- Site separation distance are set out in the permit as well as truck limits for portable plants



# Asphalt Plants

- Similar to a concrete plant set up, utilizing a mixture of sand and stone and asphalt cement
- Regulated by MECP and an ECA is required to operate a plant
- Emissions and noise are assessed and separation distances may be set out in an ECA for a portable plant
- Also regulated by municipal zoning requirements
- Typically, Ontario municipalities were paving on average between 5.3 and 5.6 million tonnes per year, and the MTO paves between 2.5 and 3.0 million tonnes per year
- A ton of asphalt covers 2.8 to 7.4 square metres. A two-car driveway needs 7.5 to 18 tons of asphalt, depending on the pavement lift thickness.





# Recycling site

---

