

SITE LAYOUT DESIGN OF PROPOSED TELECOM TOWER INSTALLATION AT
 15770 MOUNTAINVIEW RD.
 CALEDON, ON.
 L7C 2V2

PART OF LOT 2
 CONCESSION 5, EAST OF HURONTARIO STREET
 (GEOGRAPHIC TOWNSHIP OF CALEDON)
 TOWN OF CALEDON
 REGIONAL MUNICIPALITY OF PEEL
 SCALE 1 : 500

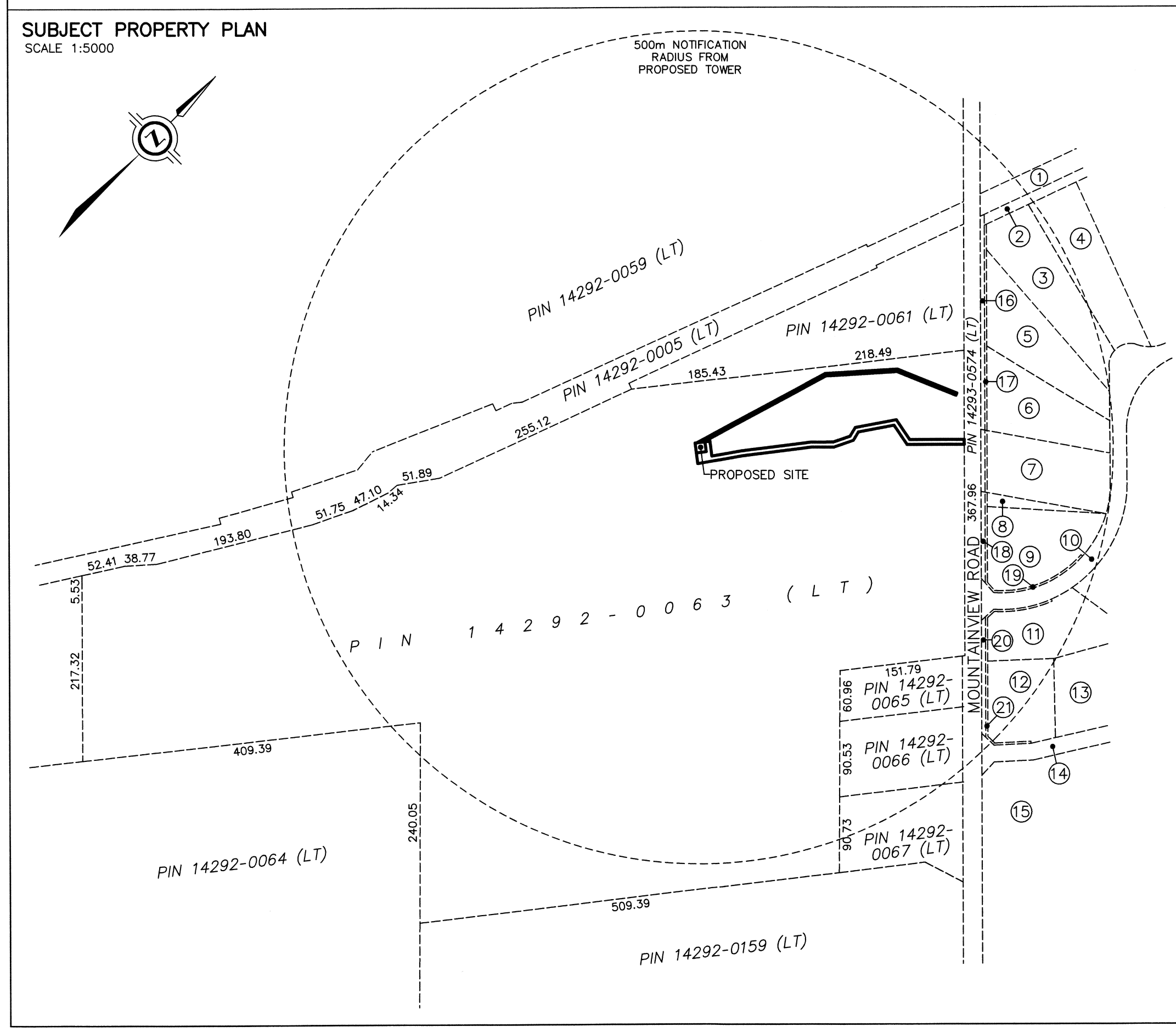
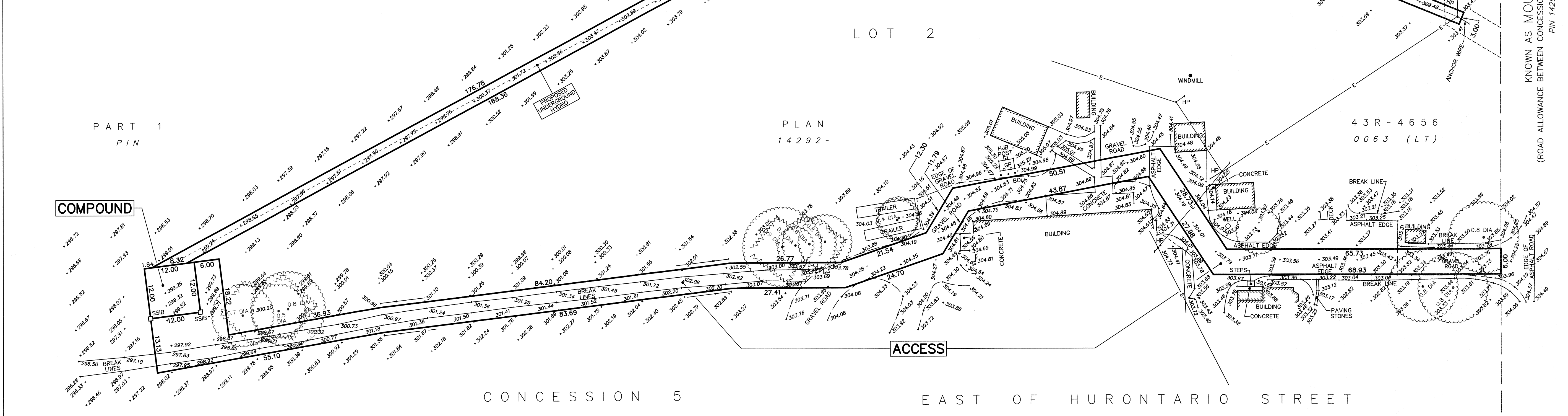
J.D. BARNES LIMITED
 ONTARIO LAND SURVEYORS
 © COPYRIGHT
METRIC DISTANCES AND/OR COORDINATES SHOWN ON THIS PLAN ARE IN METRES AND CAN BE CONVERTED TO FEET BY DIVIDING BY 0.3048.

CAUTION
 THIS IS NOT A PLAN OF SURVEY AND SHALL NOT BE USED EXCEPT FOR THE PURPOSE INDICATED IN THE TITLE BLOCK.

NOTE
 BOUNDARY INFORMATION IS COMPILED FROM AVAILABLE RECORDS, AND HAS NOT BEEN VERIFIED BY A FIELD SURVEY.

BENCHMARK
 ELEVATIONS SHOWN HEREON ARE RELATED TO GEODETIC DATUM AND ARE DERIVED FROM GPS OBSERVATION USING THE POWERNET NETWORK SERVICE AND REFER TO THE HT2_OA VERTICAL SYSTEM.

- LEGEND**
- HJB DENOTES HYDRO JUNCTION BOX
 - GP DENOTES GAS PUMP
 - BOL DENOTES BOLLARD
 - HP DENOTES HYDRO POLE
 - E — DENOTES OVERHEAD HYDRO CABLE
 - (with star) DENOTES CONIFEROUS TREE
DIA=DIAMETER OF TRUNK IN METRES
 - (with dot) DENOTES DECIDUOUS TREE
DIA=DIAMETER OF TRUNK IN METRES

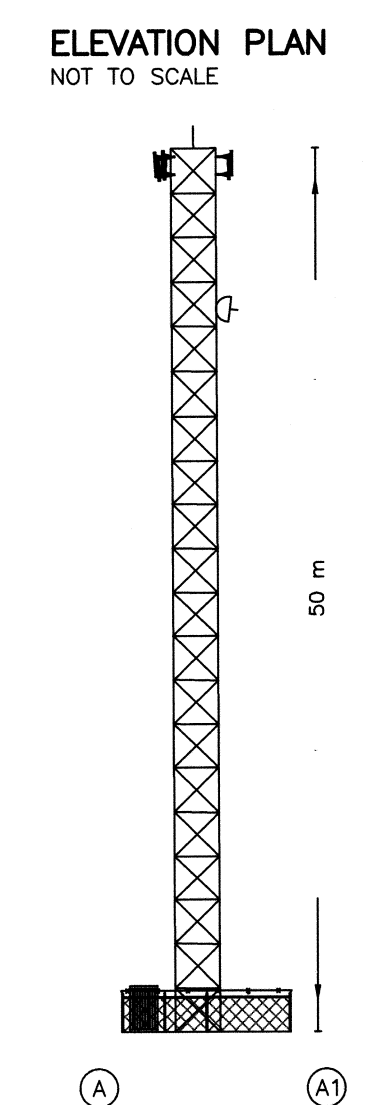


NOTIFICATION PROPERTIES

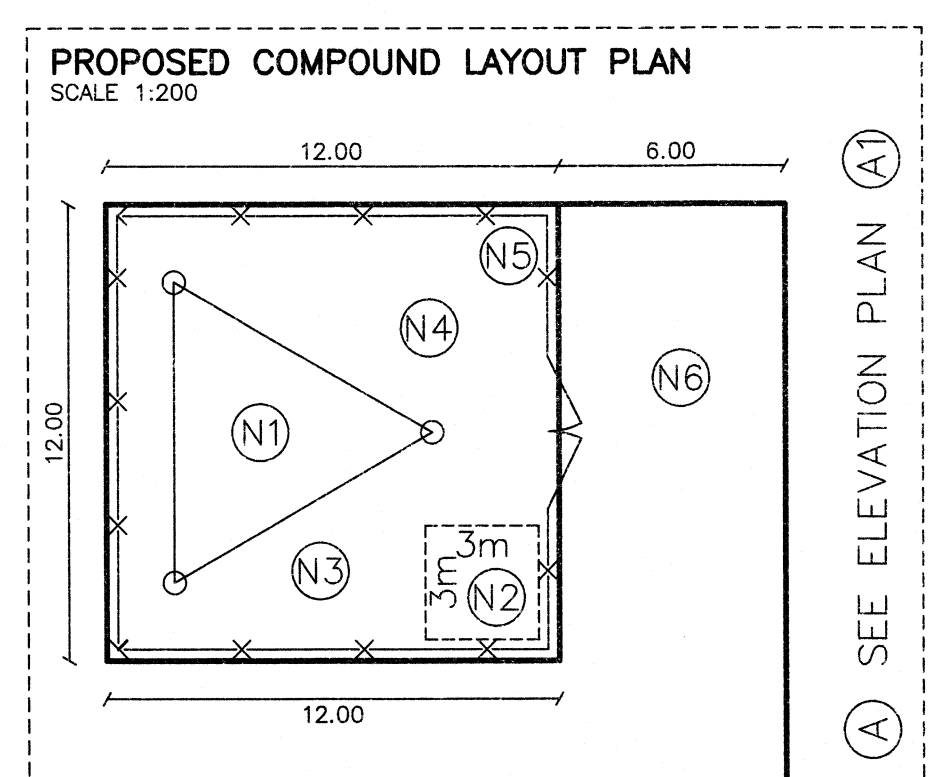
1	PIN 14293-0192 (LT)
2	PIN 14293-0352 (LT)
3	PIN 14293-0365 (LT)
4	PIN 14293-0364 (LT)
5	PIN 14293-0366 (LT)
6	PIN 14293-0367 (LT)
7	PIN 14293-0368 (LT)
8	PIN 14293-0579 (LT)
9	PIN 14293-0369 (LT)
10	PIN 14293-0370 (LT) (DAMASCUS DRIVE)
11	PIN 14293-0371 (LT)
12	PIN 14293-0389 (LT)
13	PIN 14293-0390 (LT)
14	PIN 14293-0442 (LT) (CRANSTON DRIVE)
15	PIN 14293-0412 (LT)
16	PIN 14293-0478 (LT)
17	PIN 14293-0477 (LT)
18	PIN 14293-0580 (LT)
19	PIN 14293-0480 (LT)
20	PIN 14293-0574 (LT)
21	PIN 14293-0482 (LT)

SITE DATA

	EXISTING	PROPOSED
PROPERTY AREA	45.4 ha.	
BUILDING AREA	N/A	4 sq.m.
LOT COVERAGE	N/A	N/A
AREA REQUIREMENTS		
COMPOUND (EXCLUSIVE)		144.0 sq.m.
ACCESS (NON-EXCLUSIVE)		2256.7 sq.m.
UTILITIES (NON-EXCLUSIVE)		1007.9 sq.m.
TOTAL		3408.6 sq.m.
UNITS		1 TOWER 1 CABINET(S)
HEIGHT OF TOWER		50 m
SETBACKS (PROPOSED TOWER)		
FRONT (MOUNTAINVIEW RD.)		320.2± m
SIDE (NORTHWEST)		79.4± m
REAR (SOUTHWEST)		761± m
SETBACKS (PROPOSED CABINET)		
FRONT (MOUNTAINVIEW RD.)		312.2± m
SIDE (NORTHWEST)		81.8± m
REAR (SOUTHWEST)		765± m



- NOTES**
- (N1) PROPOSED STEEL LATTICE TRIPPOLE TOWER WITH LIGHTNING PROTECTION SYSTEM. PAINT COLOUR SUBJECT TO NAV CANADA REQUIREMENTS. ANTENNA NUMBER AND LOCATIONS TO BE DETERMINED. FOUNDATION DESIGN PENDING SOIL REPORT.
 - (N2) PROPOSED PREFABRICATED GALVANIZED STEEL RADIO EQUIPMENT CABINET ON CAST IN PLACE REINFORCED CONCRETE SLAB (3.0m x 3.0m).
 - (N3) HYDRO CONNECTION AND ROUTING TO BE DETERMINED BY QUALIFIED PERSONNEL IN CONSULTATION WITH LOCAL AUTHORITY.
 - (N4) REMOVE EXISTING TOPSOIL PROOF ROLL SUBGRADE AND PLACE 300 mm GRANULAR ACROSS COMPOUND AREA. FINISHED GRAVEL SURFACE TO BE MIN. 150 mm ABOVE EXISTING GRADE AND SLOPED AWAY FROM PROPOSED STRUCTURES AT MIN. 2% ON ALL SIDES TO PROVIDE ADEQUATE DRAINAGE.
 - (N5) PROPOSED 1.8 m HIGH CHAIN LINK FENCE TOPPED WITH BARBED WIRE SURROUNDED COMPOUND.
 - (N6) PARKING AREA FOR MAINTENANCE VEHICLE.



CERTIFICATE OF COMPLETION
 I CERTIFY THAT:
 1. THE FIELD WORK WAS COMPLETED ON THE 21st DAY OF OCTOBER, 2018.

DATE NOV 15, 2018
 GRANT T. STIDWILL
 ONTARIO LAND SURVEYOR

CAUTION
 LOCATIONS OF ANY UNDERGROUND SERVICES ARE APPROXIMATE. OTHER BURIED UTILITIES MAY EXIST WHICH ARE NOT SHOWN BECAUSE OF INSUFFICIENT INFORMATION. CONTACT ALL POTENTIAL OWNERS OF UNDERGROUND UTILITIES PRIOR TO COMMENCEMENT OF CONSTRUCTION.

ROGERS
 SITE: C6540
 MOUNTAINVIEW RD. & CALEDON TRAILWAY

LATITUDE N 43°51'16.4"
 LONGITUDE W 79°52'29.2"
 ELEVATION 299.3m

J.D. BARNES LIMITED
 SURVEYING MAPPING GIS
 LAND INFORMATION SPECIALISTS
 401 WHEELABRATOR WAY, SUITE A, MILTON, ON L9T 3C1
 T: (905) 875-9955 F: (905) 875-9956 www.jdbarnes.com

DRAWN BY: AP CHECKED BY: GS REFERENCE NO.: 18-30-298-00-A
 FILE: G:\18-30-298\00\Drawing\18-30-298-A.dgn DATED: NOVEMBER 14th, 2018
 PLOTTED: 11/14/2018