

To be re-designated from "Residential Policy Area A" and "Environmental Policy Area" to "Low Density Residential", "Medium Density Residential", "Medium-High Density Residential", "General Commercial", "Open Space Policy Area", and "Environmental Policy Area".

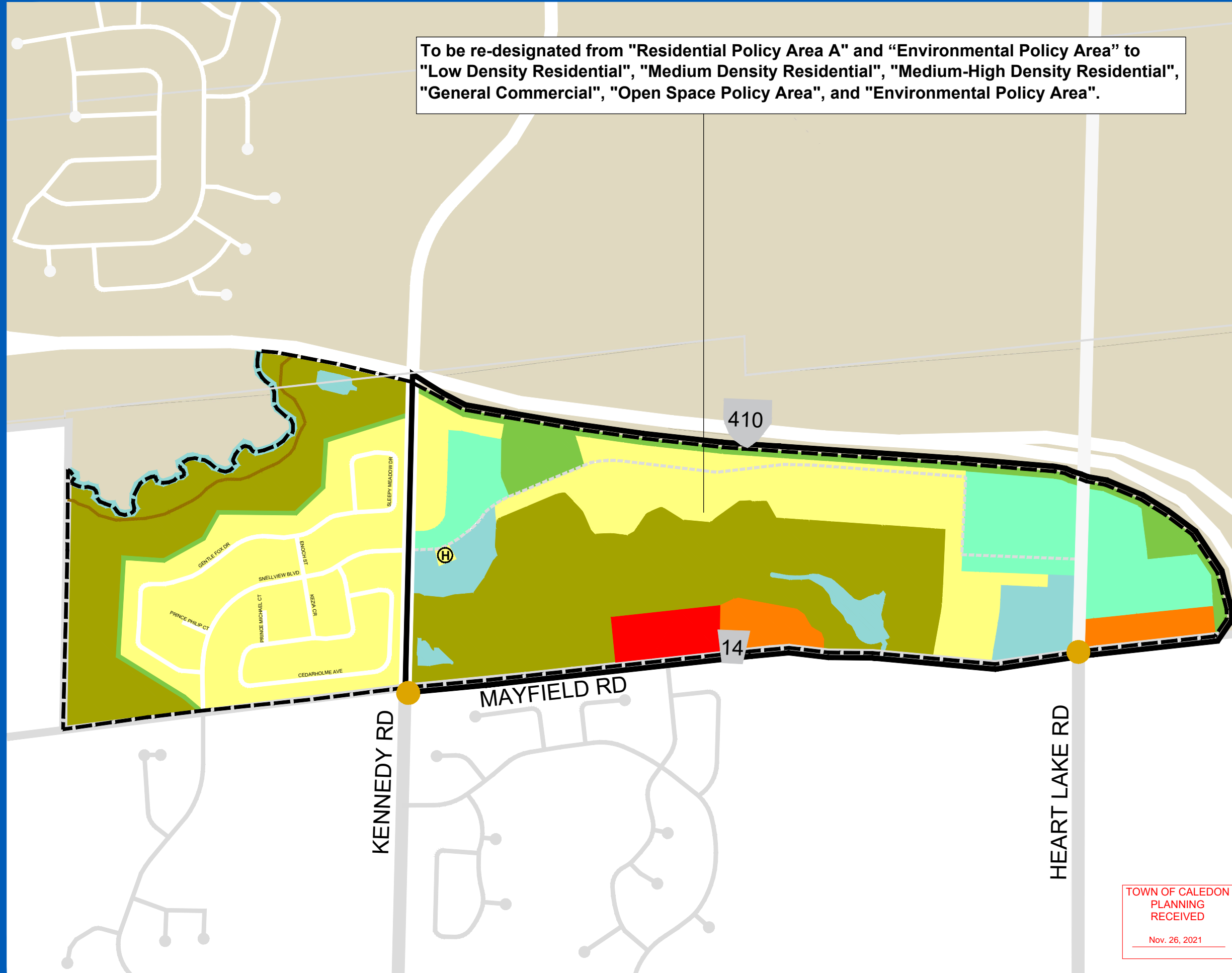


Schedule B-1

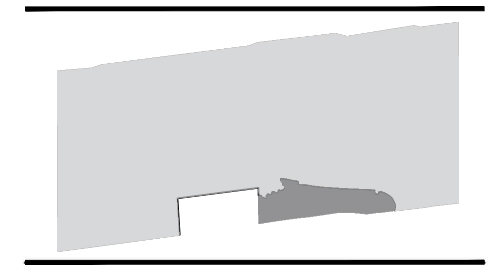
(A Subschedule to Schedule "B")

SNELL'S HOLLOW SECONDARY PLAN

-  SECONDARY PLAN BOUNDARY
-  LOW DENSITY RESIDENTIAL
-  MEDIUM DENSITY RESIDENTIAL
-  MEDIUM-HIGH DENSITY RESIDENTIAL
-  GENERAL COMMERCIAL
-  OPEN SPACE POLICY AREA
-  ENVIRONMENTAL POLICY AREA
-  STORMWATER POND FACILITY
-  GATEWAY FEATURE
-  CULTURAL HERITAGE RESOURCE
-  PROVINCIAL FREEWAY
-  REGIONAL ROAD
-  CONCEPTUAL ROAD NETWORK
-  COLLECTOR ROAD
-  LOCAL ROAD
-  TRAIL



TOWN OF CALEDON
PLANNING
RECEIVED
Nov. 26, 2021



Base Data Source: Town of Caledon

