

TOWN OF CALEDON  
PLANNING  
RECEIVED  
Sept. 17, 2021

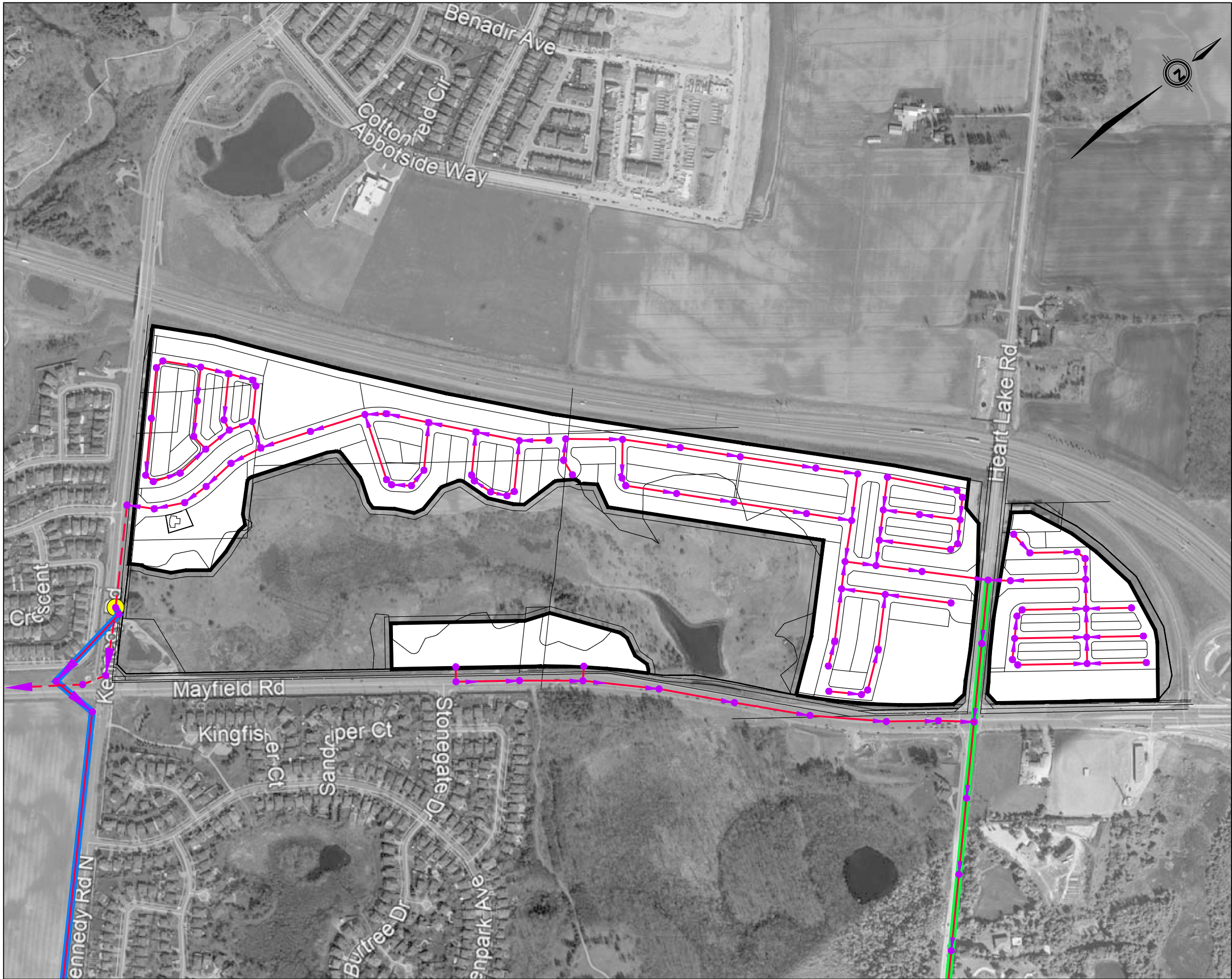
---

## Appendix K

### Sanitary Servicing Strategy







---





SNELL'S HOLLOW SECONDARY PLAN  
TOWN OF CALEDON

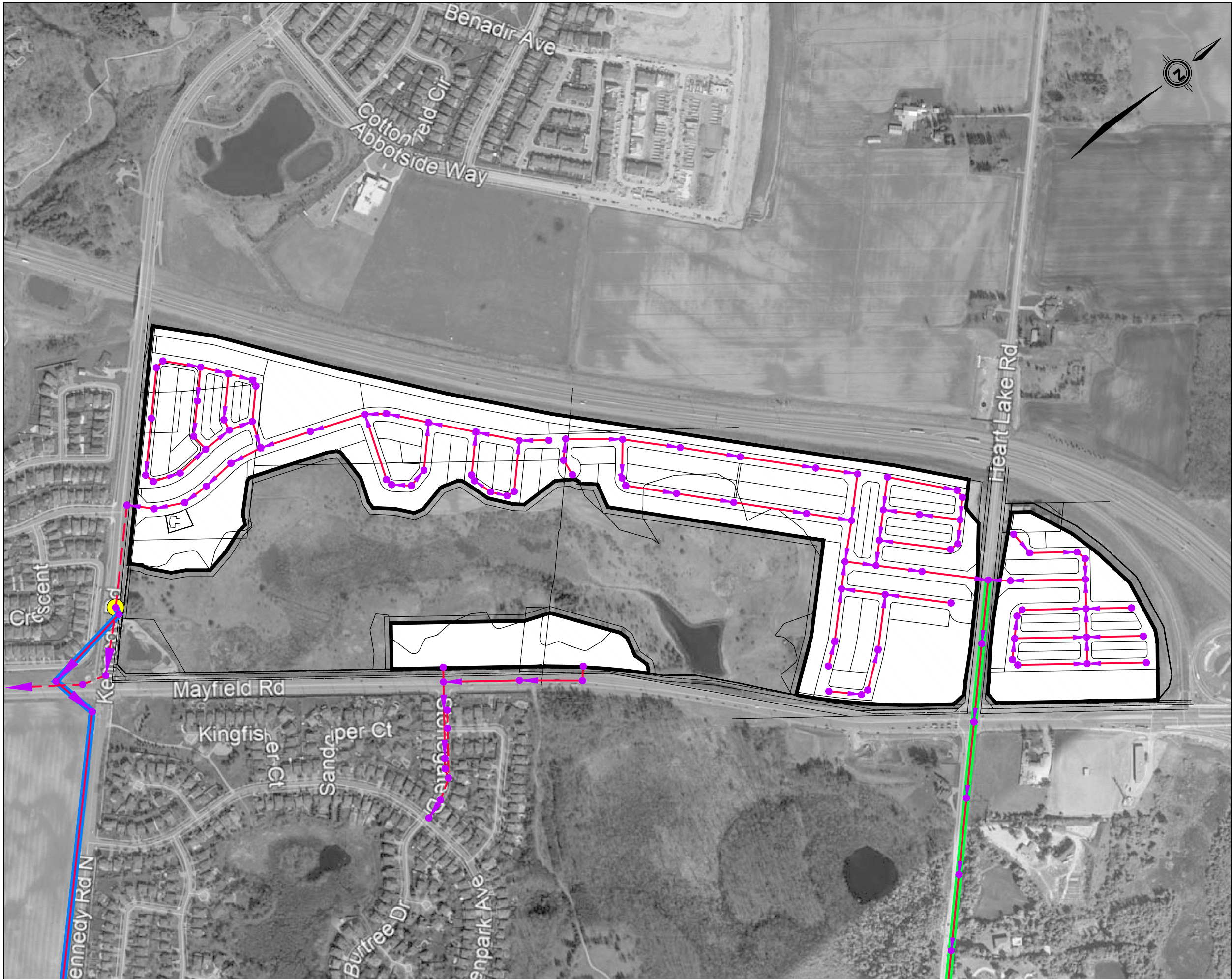
LEGEND

-  DEVELOPMENT BOUNDARY
-  PROPOSED SANITARY SEWERS
-  EXISTING SANITARY SEWERS
-  PROPOSED SANITARY SEWERS BY REGION
-  PROPOSED SANITARY SEWER CONNECTION BY REGION FROM EXISTING SANITARY SEWER
-  PROPOSED SANITARY SEWERS TO CONNECT TO EX. STUB AT HEARTLAKE AND ECOPARK RD.

 **SCHAEFFERS**  
CONSULTING ENGINEERS  
6 Ronrose Drive, Concord, Ontario L4K 4R3  
Tel: (905) 738-6100 Email: general@schaeffers.com  
[www.schaeffers.com](http://www.schaeffers.com)

FIGURE K.1  
SANITARY SERVICING PLAN  
OPTION 1





SNELL'S HOLLOW SECONDARY PLAN  
TOWN OF CALEDON

LEGEND

- DEVELOPMENT BOUNDARY
- PROPOSED SANITARY SEWERS
- EXISTING SANITARY SEWERS
- PROPOSED SANITARY SEWERS BY REGION
- PROPOSED SANITARY SEWER CONNECTION BY REGION FROM EXISTING SANITARY SEWER
- PROPOSED SANITARY SEWERS TO CONNECT TO EX. STUB AT HEARTLAKE AND ECOPARK RD.

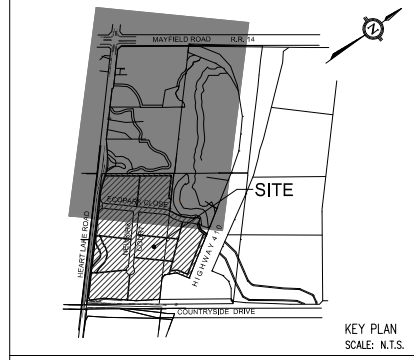
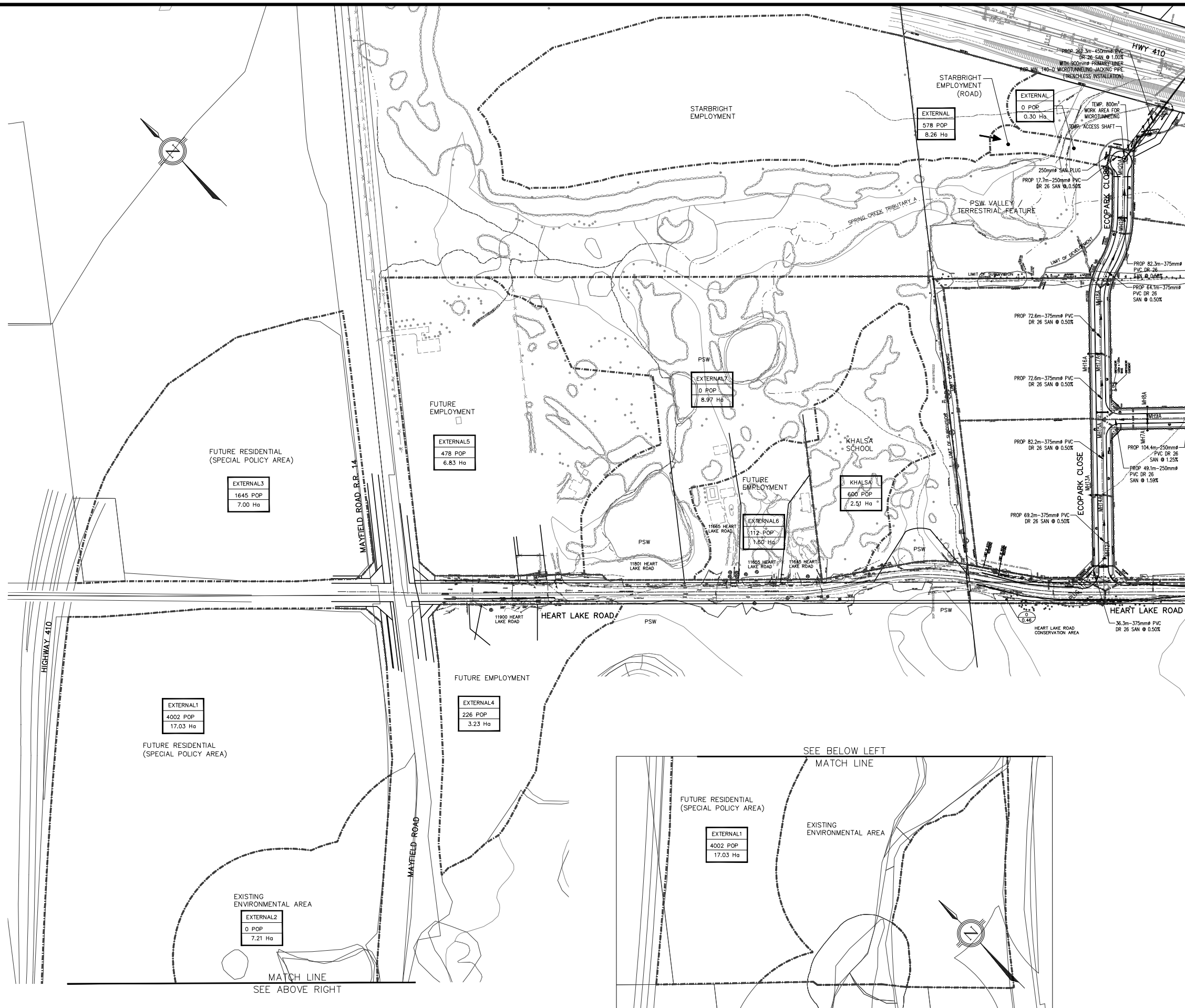
**SCHAEFFERS**  
CONSULTING ENGINEERS  
6 Ronrose Drive, Concord, Ontario L4K 4R3  
Tel: (905) 738-6100 Email: general@schaeffers.com  
[www.schaeffers.com](http://www.schaeffers.com)

FIGURE K.2  
SANITARY SERVICING PLAN  
OPTION 2



## Appendix K.1: Background Information





**LEGEND**

●	PROPOSED SANITARY MANHOLE
○	EXISTING SANITARY MANHOLE
52	PROPOSED BLOCK NUMBERS
0.62	POPULATION
0.62	AREA IN HECTARES
EXTERNAL 52	EXTERNAL POPULATION
0.62	AREA IN HECTARES
---	LIMIT OF SUBDIVISION
---	LIMIT OF DEVELOPMENT
---	LIMIT OF GRADING

13	FINAL CITY SUBMISSION	JULY 2020	S.R.
12	DELETION OF MH 11A	MAY 2020	S.R.
11	ADD DRAIN PIPE/SAN STUB LOWERING	MAR 2020	S.R.
10	ISSUED FOR CONSTRUCTION	NOV 2019	S.R.
9	PRE-SERVICING SUBMISSION	JUL 2019	S.R.
No.	REVISIONS	Date	By

BENCHMARK NOTE  
ELEVATIONS SHOWN HEREON ARE GEODETIC AND ARE REFERRED TO  
CITY OF BRAMPTON BENCHMARK No. 54 HAVING A PUBLISHED  
ELEVATION OF 264.941 METRES

**TMIG**  
The Municipal Infrastructure Group Ltd

**Region of Peel**  
Working for you

**BRAMPTON**  
Flower City

**Public Works & Engineering**  
MICHAEL WOLF, P.Eng., DIRECTOR  
ENVIRONMENT AND DEVELOPMENT ENGINEERING

HEART LAKE ROAD EMPLOYMENT LANDS  
CITY OF BRAMPTON

EXTERNAL SANITARY  
DRAINAGE PLAN

REGION FILE No: T-090128a	CITY FILE No: C03E16.003
Scale: 1:2000	Project No: 13117
Drawn By: CAD	Drawing No: EXSAN03
Designed By: J.F./A.C./V.P.	
Checked By: S.R.	
Date: MAR 2015	







## Sarah Fanous

---

**From:** Yashaswy Gollamudi  
**Sent:** February 9, 2021 5:19 PM  
**To:** Gorzynski, Derek; Lipka, Bob  
**Cc:** Koryun Shahbikian; Sarah Fanous  
**Subject:** RE: 4851-Sanitary Sewer Works on Kennedy Road and Heartlake Road

Thank you very much for the information Derek.

Regards,  
Yash



---

**From:** Gorzynski, Derek <derek.gorzynski@peelregion.ca>  
**Sent:** February 9, 2021 2:23 PM  
**To:** Yashaswy Gollamudi <ygollamudi@schaeffers.com>; Lipka, Bob <boguslaw.lipka@peelregion.ca>  
**Cc:** Koryun Shahbikian <kshahbikian@schaeffers.com>; Sarah Fanous <sfanous@schaeffers.com>  
**Subject:** RE: 4851-Sanitary Sewer Works on Kennedy Road and Heartlake Road

Hi Yash

We are currently finishing the Kennedy Road design with the intention to issue a construction tender in the late spring of 2021. It is my understanding however that the Region of Peel is working on the capital projects deferral list. Since the list has not been finalised yet I cannot definitively confirm if the construction will start this year.

Regards

**Derek Gorzynski**, P. Eng.  
Project Manager, Capital Works Wastewater Collection & Conveyance  
Public Works  
Region of Peel  
10 Peel Centre Drive, Suite B, 4<sup>th</sup> Floor  
Brampton, ON L6T 4B9  
Tel. 905.791.7800 x5013  
Cell. 905.867.0560



This email, including any attachments, is intended for the recipient specified in the message and may contain information



which is confidential or privileged. Any unauthorized use or disclosure of this email is prohibited. If you are not the intended recipient or have received this e-mail in error, please notify the sender via return email and permanently delete all copies of the email. Thank you.

---

**From:** Yashaswy Gollamudi <[ygollamudi@schaeffers.com](mailto:ygollamudi@schaeffers.com)>  
**Sent:** February 9, 2021 1:50 PM  
**To:** Lipka, Bob <[boguslaw.lipka@peelregion.ca](mailto:boguslaw.lipka@peelregion.ca)>; Gorzynski, Derek <[derek.gorzynski@peelregion.ca](mailto:derek.gorzynski@peelregion.ca)>  
**Cc:** Koryun Shahbikian <[kshahbikian@schaeffers.com](mailto:kshahbikian@schaeffers.com)>; Sarah Fanous <[sfanous@schaeffers.com](mailto:sfanous@schaeffers.com)>  
**Subject:** RE: 4851-Sanitary Sewer Works on Kennedy Road and Heartlake Road

**CAUTION: EXTERNAL MAIL. DO NOT CLICK ON LINKS OR OPEN ATTACHMENTS YOU DO NOT TRUST.**

Hello Bob,

Thank you very much for the information.

Derek,

We appreciate it if you could please provide the status of the **Kennedy Road Sanitary Sewer Project (Project No. 15-2153) (See below)**.

Thank you and Regards,  
Yash



---

**From:** Lipka, Bob <[boguslaw.lipka@peelregion.ca](mailto:boguslaw.lipka@peelregion.ca)>  
**Sent:** February 9, 2021 12:07 PM  
**To:** Yashaswy Gollamudi <[ygollamudi@schaeffers.com](mailto:ygollamudi@schaeffers.com)>; Gorzynski, Derek <[derek.gorzynski@peelregion.ca](mailto:derek.gorzynski@peelregion.ca)>  
**Cc:** Koryun Shahbikian <[kshahbikian@schaeffers.com](mailto:kshahbikian@schaeffers.com)>; Sarah Fanous <[sfanous@schaeffers.com](mailto:sfanous@schaeffers.com)>  
**Subject:** RE: 4851-Sanitary Sewer Works on Kennedy Road and Heartlake Road

Hi Yash,

The 450/375mm diameter sanitary sewer has been installed across Hwy 410 and through the Heart Lake Employment Subdivision, all the way to Heart Lake Road. There are some minor deficiencies that needs to be rectified and the subdivision needs to be registered before the Region takes over this sanitary sewer. It is anticipated that this will be completed sometime this Spring. In order to service the lands around Mayfield Road and Heart Lake Road the sanitary sewer would need to be extended from the existing stub along Heart Lake Road to Mayfield Road.

With regards to your second inquiry about the proposed sanitary sewer on Kennedy Road I need to redirect you to Derek Gorzynski (copied on this email) who is the project manager for this project.

Regards,



Bob Lipka, C.E.T.  
Project Manager  
Engineering, Development Services  
Public Works  
Tel. 905-791-7800 ext. 5071  
Fax. 905-791-1442

**In response to the emergence of the novel coronavirus, the Region of Peel is implementing various measures to protect our customers, employees and workplaces. Development Services will endeavour to maintain the continuity of our business operations, however delays in service may still be experienced. We appreciate your patience during this time.**

---

**From:** Yashaswy Gollamudi <[ygollamudi@schaeffers.com](mailto:ygollamudi@schaeffers.com)>  
**Sent:** February 9, 2021 11:18 AM  
**To:** Lipka, Bob <[boguslaw.lipka@peelregion.ca](mailto:boguslaw.lipka@peelregion.ca)>  
**Cc:** Koryun Shahbikian <[kshahbikian@schaeffers.com](mailto:kshahbikian@schaeffers.com)>; Sarah Fanous <[sfanous@schaeffers.com](mailto:sfanous@schaeffers.com)>  
**Subject:** 4851-Sanitary Sewer Works on Kennedy Road and Heartlake Road

**CAUTION: EXTERNAL MAIL. DO NOT CLICK ON LINKS OR OPEN ATTACHMENTS YOU DO NOT TRUST.**

---

Good Morning Bob,

Hope you are doing well.

Could you please provide a status update of the following sanitary sewer works being undertaken in the Region of Peel:

- **Sanitary sewer that will be servicing lands around Mayfield and Heart Lake Roads area. Works are being undertaken as part of the Heart Lake Employment Lands project (Project No. T-09012Ba)**
  - Could you please confirm if the sewers are in service? The below email mentioned that the installation would be completed in 2020.
- **Kennedy Road Sanitary Sewer (a 1200mm diameter CPP sanitary sewer, on Kennedy Road North and Conservation Drive, City of Brampton) – Project No. 15-2153**
  - Could you please confirm if the sewers are installed?

We appreciate your help on the above.

Thank you and Regards,  
Yash





---

**From:** Lipka, Bob [<mailto:boguslaw.lipka@peelregion.ca>]  
**Sent:** February 25, 2020 9:27 AM  
**To:** Janaani Pathmanapan  
**Cc:** Koryun Shahbikian  
**Subject:** RE: Request for Information - Countryside Drive & Heart Lake Road

Good morning Jenny,

The sanitary sewer that will be servicing lands around Mayfield and Heart Lake Roads area is currently being constructed as part of Heart Lake Employment Lands project (Project No. T-09012Ba). We are extending 375mm diameter sanitary sewer along an internal road from the east side of Hwy 410 to Heart Lake Road, approximately 300 meters north of Countryside Drive. Underground works should be completed sometime late Spring / early Summer 2020. For the design drawings please contact TMIG as they are the consultant for the project.

Regards,  
Bob

---

**From:** Janaani Pathmanapan <[jpathmanapan@schaeffers.com](mailto:jpathmanapan@schaeffers.com)>  
**Sent:** February 24, 2020 12:13 PM  
**To:** Lipka, Bob <[boguslaw.lipka@peelregion.ca](mailto:boguslaw.lipka@peelregion.ca)>  
**Cc:** Koryun Shahbikian <[kshahbikian@schaeffers.com](mailto:kshahbikian@schaeffers.com)>  
**Subject:** Request for Information - Countryside Drive & Heart Lake Road

**CAUTION: EXTERNAL MAIL. DO NOT CLICK ON LINKS OR OPEN ATTACHMENTS YOU DO NOT TRUST.**

Hello Bob,

Schaeffers & Associates has been retained to work on a development located on Mayfield and Heart Lake Road. I am seeking some information regarding the sanitary sewer along Countryside Drive to Heart Lake Road.

I would like to know if this sewer has been installed? I would also like to request for a plan and profile of this sewer.

I greatly appreciate any information you would be able to provide me with.

Thank you,

Janaani Jenny Pathmanapan, C.E.T.  
Water Resources Analyst

**Schaeffer & Associates Limited**  
6 Ronrose Drive  
Concord, Ontario L4K 4R3  
Tel: 905 738 6100  
Fax: 905 738 6875

## Appendix K.2: Sanitary Demand Calculations



### Sanitary Flow Calculation

Project: Snell's Hollow Secondary Plan Area  
 Project No: 4851



Infiltration Rate:		0.2	L/s/ha
Generation Rate:	Residential and Employment Areas	302.8	L/capita/day

#### Estimated Site Discharge

Site Discharge TO East (Heart Lake Road)	Units	Population	Average Demand (L/S)	Harmon's Peaking Factor	Flow (L/s) **	Infiltration (L/s)*	Total PeakFlow (L/s)
A1	325	1042	3.65	3.79	13.84	2.93	<b>16.77</b>
B	338	863	3.02	3.84	11.61	1.21	<b>12.82</b>
C	188	512	1.79	3.97	7.12	0.54	<b>7.66</b>
Total	851	2417	8	-	32.57	4.68	37.26

Site Discharge TO West (KENNEDY ROAD)	Units	Population	Average Demand (L/S)	Harmon's Peaking Factor	Flow (L/s) **	Infiltration (L/s)*	Total PeakFlow (L/s)
A2	236	775	2.72	3.87	10.51	2.71	<b>13.21</b>

\*As per Peel Region Design Guidelines  
 \*\*Sanitary flow as per Peel Region Guidelines