

SCHEDULE "A" ZONING BY-LAW _____ AMEDNING BY-LAW 2006-50

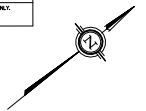
PART OF LOT 10, CONCESSION 5
AND PART OF KING STREET
(STOPPED UP AND CLOSED BY BY-LAW 53/015, INST. PRO72058)
PART OF LOT 10, CONCESSION 6
(FORMERLY TOWNSHIP OF CALDON, COUNTY OF PEEL)
PART OF BLOCK 272 AND
PART OF BLOCK 293 (1/30 RESERVE)
PLAN 43M-1548
TOWN OF CALEDON
REGIONAL MUNICIPALITY OF PEEL

LEGEND

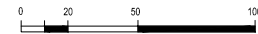
Lands subject to rezoning

COORDINATES
COORDINATES SHOWN HEREON ARE GRID DERIVED FROM HORIZONTAL CONTROL MONUMENTS No. 042100310 AND No. 00919724257 AND ARE REFERRED TO THE 6° UTM COORDINATE SYSTEM, ZONE 17, CENTRAL MERIDIAN 81°00' WEST LONGITUDE. (NAD 83 ORIGINAL).

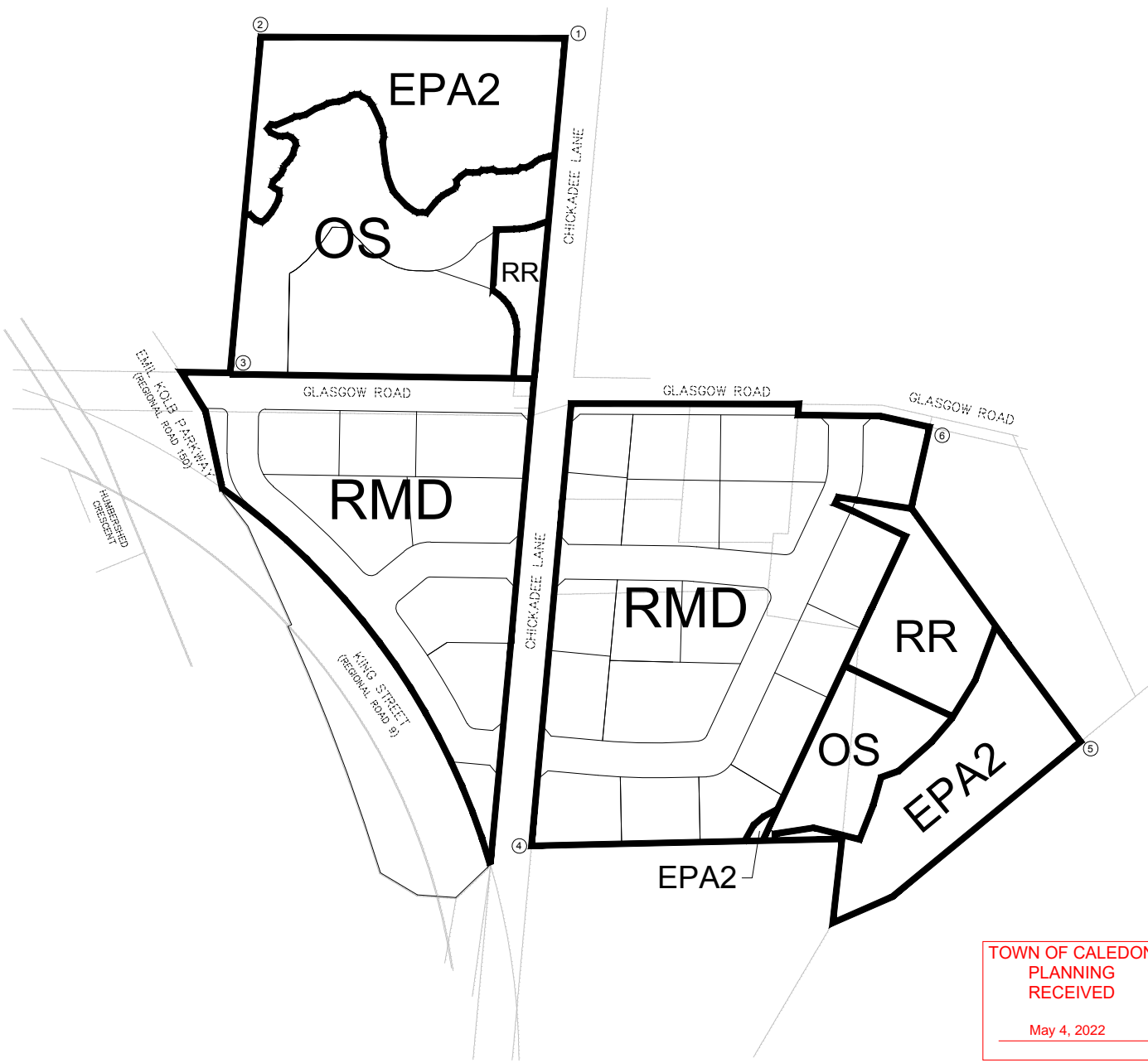
INTEGRATION DATA		
6° UTM ZONE 17 COORDINATES NAD 83 (ORIGINAL) (CENTRAL MERIDIAN 81°00' WEST LONGITUDE) THE UTM COORDINATES LISTED BELOW ARE TO BE USED IN CONJUNCTION WITH SUBSECTION 14(2) OF THE REGULATION MAKING POWER ACT.		
SPECIFIED CONTROL POINTS		
MONUMENT ID.	NORTHING	EASTING
HCM 00919724257	4 860 612.09	599 881.22
HCM 042100310	4 852 647.68	602 344.58
REFERENCE POINTS		
POINT	NORTHING	EASTING
1	4 859 161.85	599 563.62
2	4 859 042.30	599 461.03
3	4 858 918.63	599 584.34
4	4 858 973.79	600 001.42
5	4 858 131.67	600 012.20
6	4 859 176.55	599 837.87
COORDINATE VALUES SHOWN ARE FOR GEOGRAPHIC INFORMATION SYSTEM INTEGRATION ONLY. COORDINATE CORRECTIONS IN THIS TABLE, BE USED TO RE-ESTABLISH CORNERS OR BOUNDARIES SHOWN ON THIS PLAN.		



Scale: Metres



Date: August 25, 2021



TOWN OF CALEDON
PLANNING
RECEIVED

May 4, 2022