

53 UNIT 2502 (REV.)  
 END CONDITION

52 UNIT 2501 (REV.)  
 EL.'B'

51 UNIT 2501 (REV.)  
 EL.'B'

50 UNIT 2502 (REV.)  
 EL.'B'

49 UNIT 2502 (REV.)  
 END CONDITION - UPGRADED

BLOCK 11 - FRONT ELEVATION 'B'



49 UNIT 2502 (REV.)  
 END CONDITION - UPGRADED

50 UNIT 2502 (REV.)  
 EL.'B'

51 UNIT 2501 (REV.)  
 EL.'B'

52 UNIT 2501 (REV.)  
 EL.'B'

53 UNIT 2502 (REV.)  
 END CONDITION

BLOCK 11 - UPGRADED REAR ELEVATION 'B'

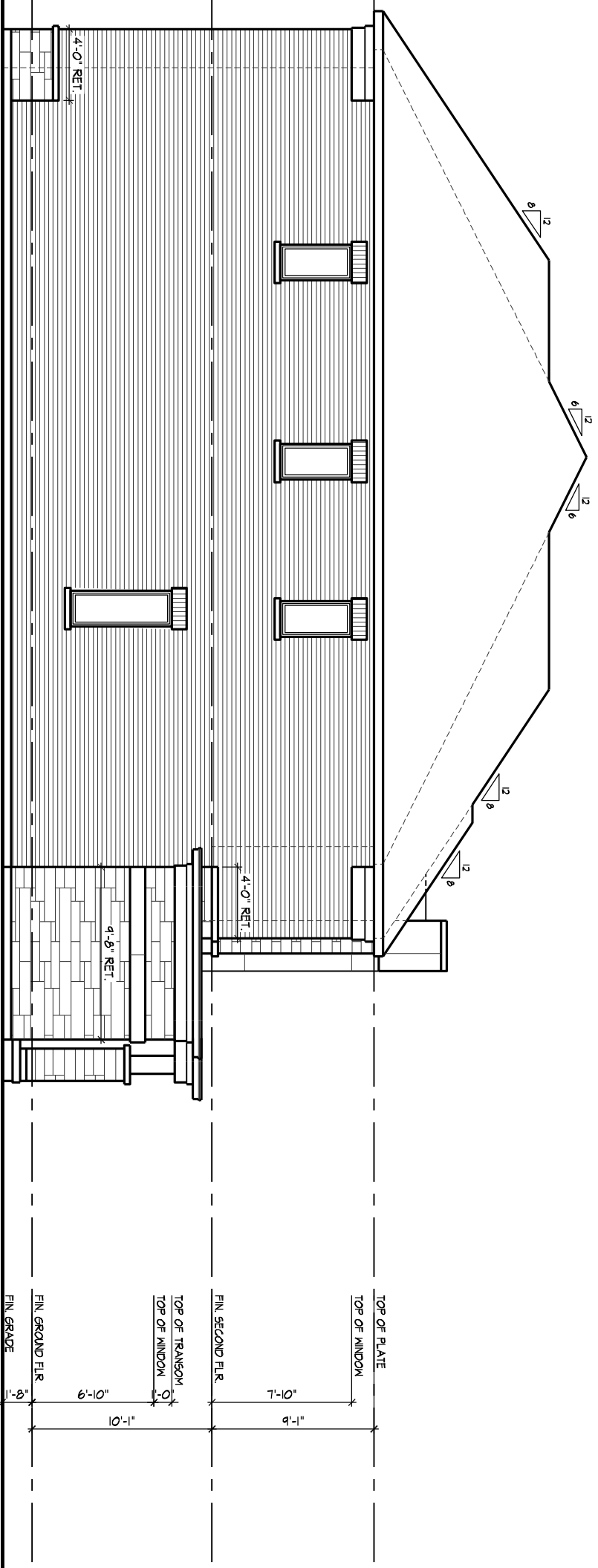
**SPATIAL CALCULATION**

PER O.B.C. TABLE 9.10.15.4

**LEFT SIDE ELEVATION B**

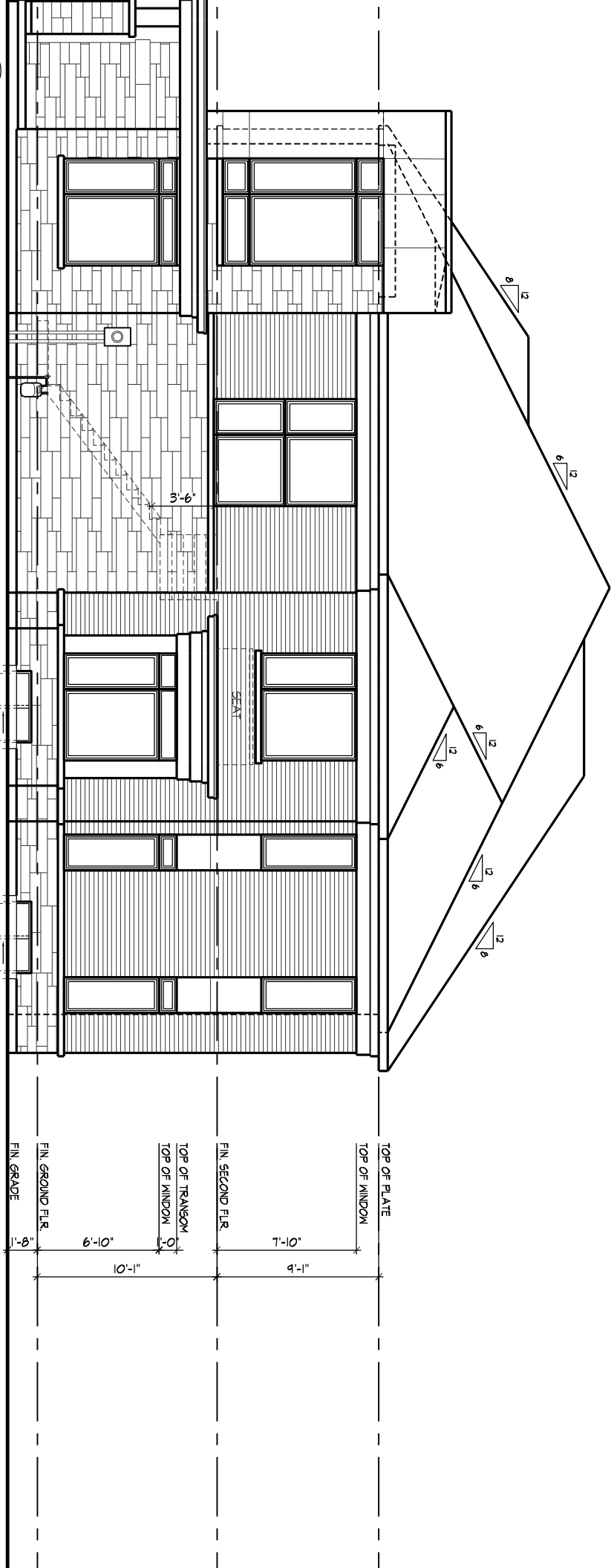
EXPOSING BUILDING	1137.75	S.F.
FACE AREA	109.70	S.M.
PORTION WALL AREA	1197.75	S.F.
	109.70	S.M.
LIMITING DISTANCE	1.2 m	%
MAX. % OPENINGS	7	%
QUAN.		
3	24'	48'
	18.33	
1	24'	68'
	8.89	
0	0'	0'
	0.00	
0	0'	0'
	0.00	
0	0'	0'
	0.00	
0	ARCH	0.00
	0.00	0.00
OPENINGS ALLOWED	79.64	S.F.
OPENINGS PROVIDED	77.72	S.F.

ADDITIONAL NOTES  
GLAZED AREA CALCULATED W/ FRAME SIZE  
MINUS 2" AROUND ENTIRE PERIMETER



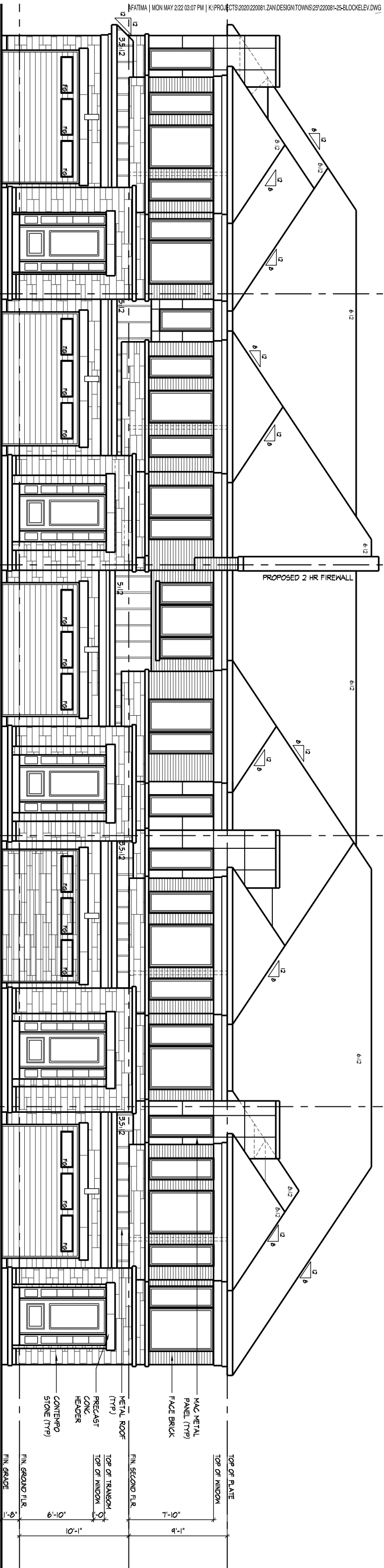
**53** UNIT 2502 (REV.)

END CONDITION  
BLOCK 11 - LEFT SIDE ELEVATION 'B'



**49** UNIT 2502 (REV.)

END CONDITION - UPGRADED  
BLOCK 11 - UPGRADED SIDE ELEVATION 'B'



58 UNIT 2502 REV MOD  
EL. 'A' END CONDITION

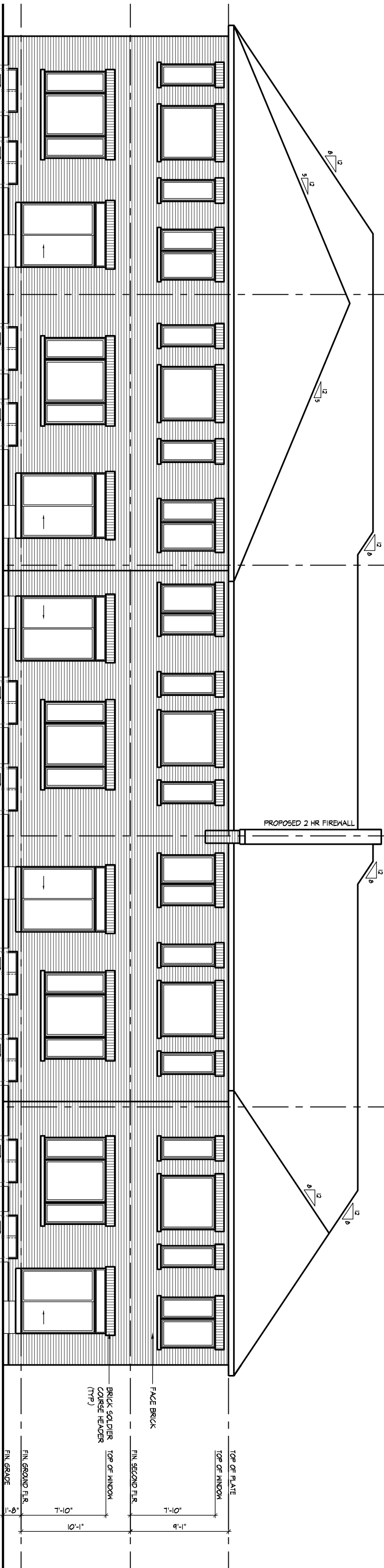
57 UNIT 2501 REV  
EL. 'A' 1'

56 UNIT 2501 REV  
EL. 'A' 1'

55 UNIT 2502 REV  
EL. 'A' 1'

54 UNIT 2502 REV MOD  
EL. 'A' END CONDITION

BLOCK 12 - FRONT ELEVATION 'A'



54 UNIT 2502 REV MOD  
EL. 'A' END CONDITION

55 UNIT 2502 REV  
EL. 'A' 1'

56 UNIT 2501 REV  
EL. 'A' 1'

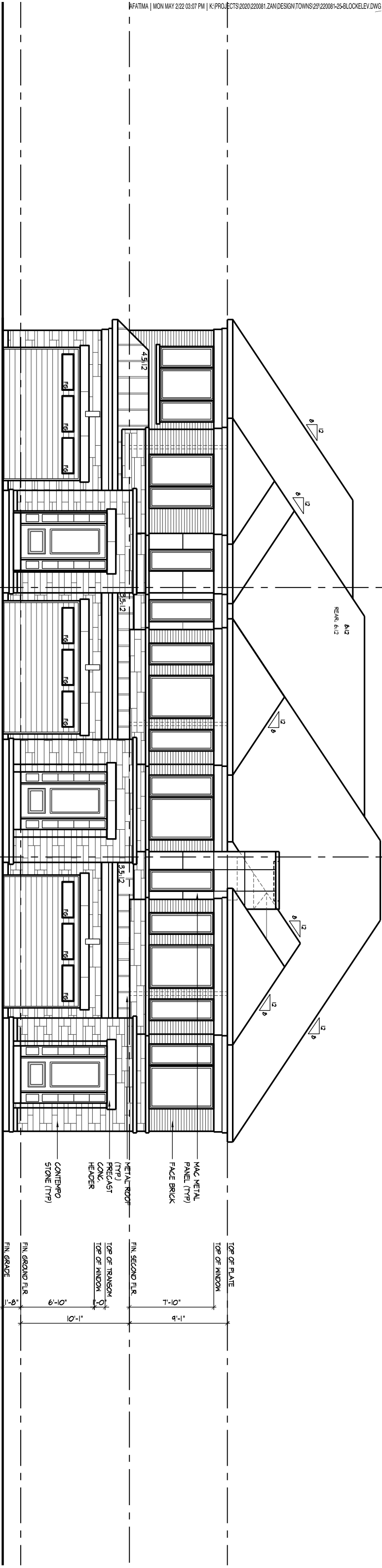
57 UNIT 2501 REV  
EL. 'A' 1'

58 UNIT 2502 REV MOD  
EL. 'A' END CONDITION

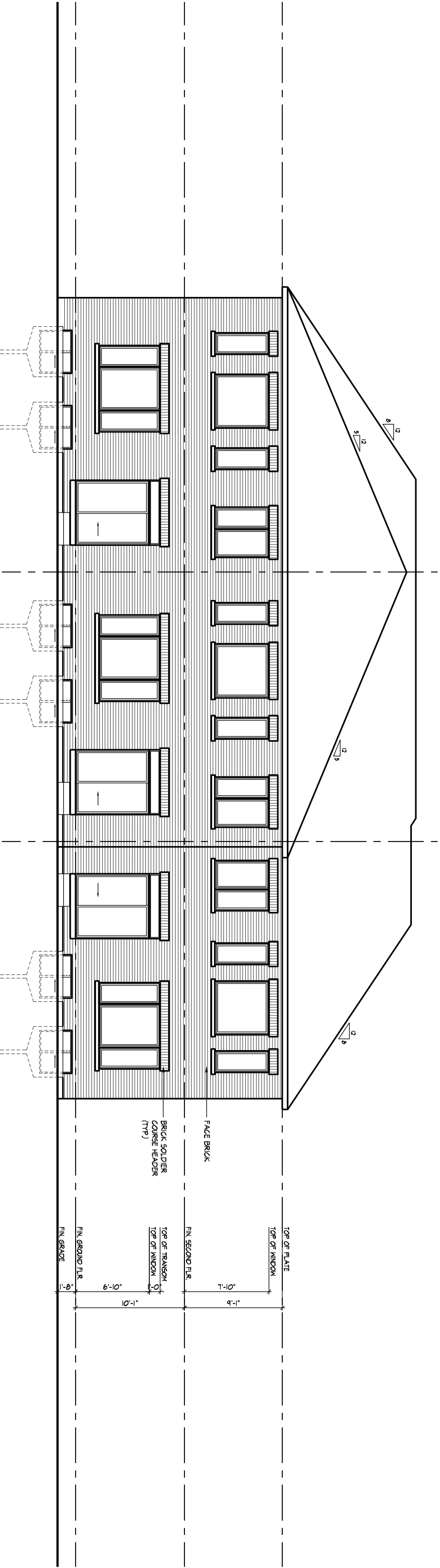
BLOCK 12 - REAR ELEVATION 'A'

TOP OF PLATE  
 TOP OF WINDOW  
 7'-0"  
 9'-1"  
 FIN. SECOND FLR  
 FACE BRICK  
 FIN. SECOND FLR  
 TOP OF WINDOW  
 BRICK SOLDIER COURSE HEADER (TYP)  
 FIN. GROUND FLR  
 FIN. GROUND FLR  
 7'-0"  
 9'-1"  
 TOP OF PLATE  
 TOP OF WINDOW  
 7'-0"  
 9'-1"  
 FIN. SECOND FLR  
 FACE BRICK  
 FIN. SECOND FLR  
 TOP OF WINDOW  
 BRICK SOLDIER COURSE HEADER (TYP)  
 FIN. GROUND FLR  
 FIN. GROUND FLR  
 7'-0"  
 9'-1"



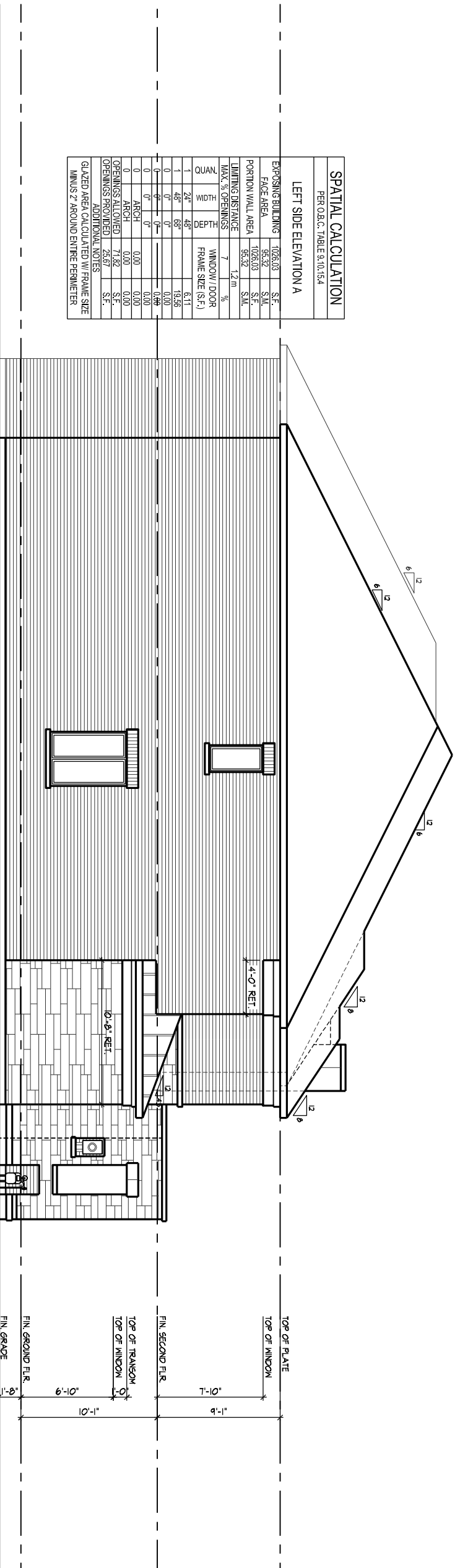


BLOCK 13 - FRONT ELEVATION 'A'



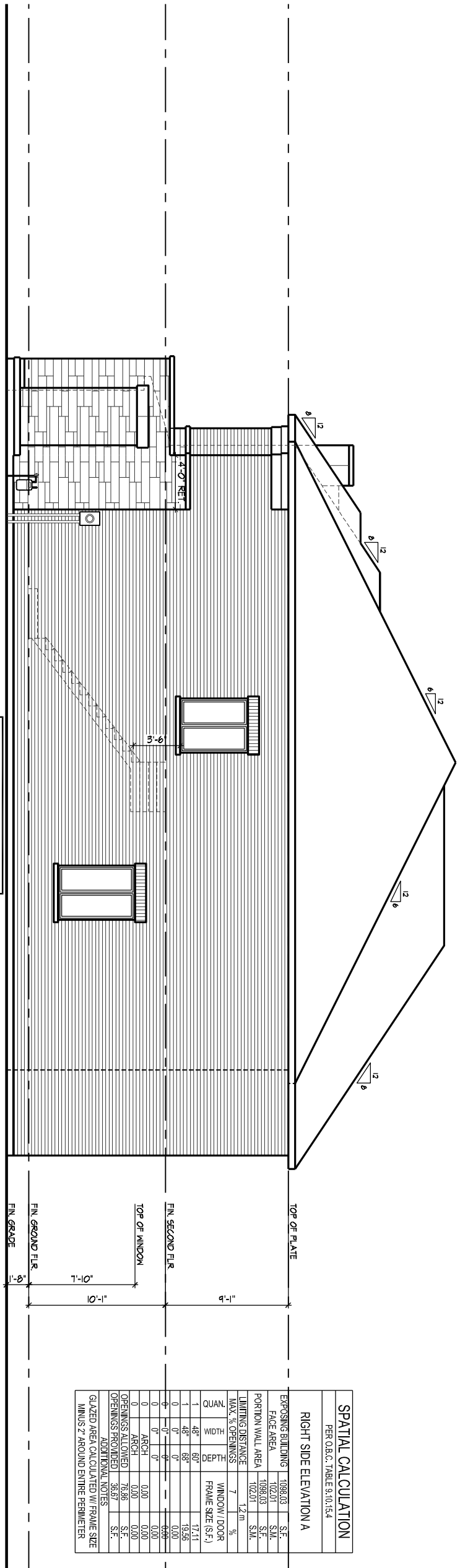
BLOCK 13 - REAR ELEVATION 'A'

SPATIAL CALCULATION			
PER O.B.C. TABLE 9.10.15.4			
LEFT SIDE ELEVATION A			
EXPOSING BUILDING	1025.03	S.F.	
FACE AREA	95.32	S.M.	
PORTION WALL AREA	1025.03	S.F.	
	95.32	S.M.	
LIMITING DISTANCE	1.2 m		
MAX. % OPENINGS	7	%	
QUAN.			
H.LDM			
DEPTH			
WINDOW / DOOR FRAME SIZE (S.F.)			
1	24"	48"	6.11
1	48"	68"	19.56
0	0"	0"	0.00
0	0"	0"	0.00
0	0"	0"	0.00
0	ARCH	0.00	0.00
0	ARCH	0.00	0.00
OPENINGS ALLOWED	71.82	S.F.	
OPENINGS PROVIDED	25.67	S.F.	
ADDITIONAL NOTES			
GLAZED AREA CALCULATED W/ FRAME SIZE MINUS 2" AROUND ENTIRE PERIMETER			



61 UNIT 2501 MOD  
EL. 'A' END CONDITION

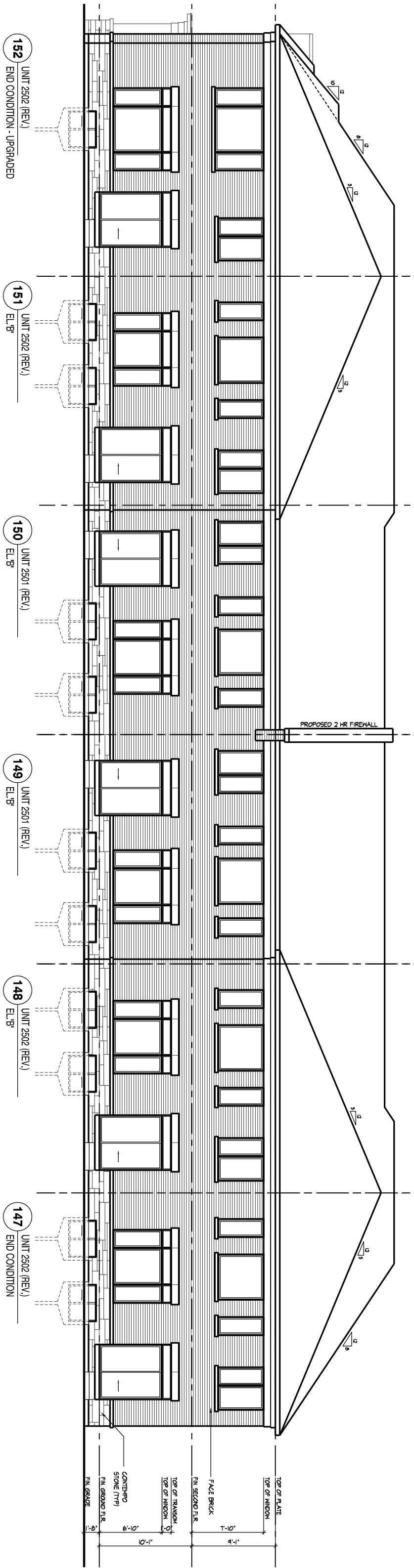
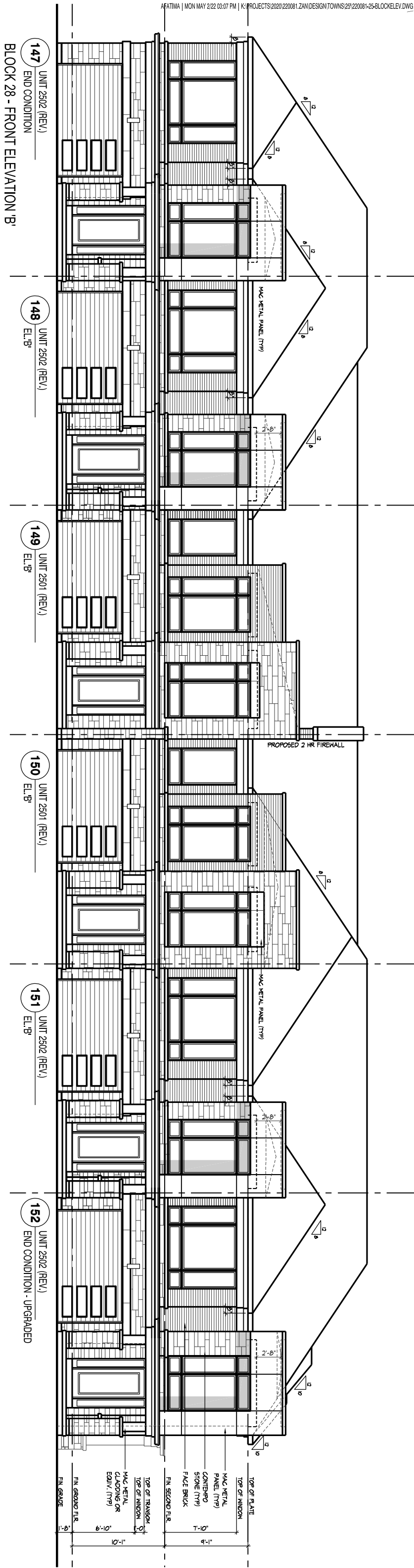
BLOCK 13 - LEFT SIDE ELEVATION 'A'



59 UNIT 2502 REV MOD  
EL. 'A' END CONDITION

BLOCK 13 - RIGHT SIDE ELEVATION 'A'

SPATIAL CALCULATION			
PER O.B.C. TABLE 9.10.15.4			
RIGHT SIDE ELEVATION A			
EXPOSING BUILDING	1025.03	S.F.	
FACE AREA	102.01	S.M.	
PORTION WALL AREA	1025.03	S.F.	
	102.01	S.M.	
LIMITING DISTANCE	1.2 m		
MAX. % OPENINGS	7	%	
QUAN.			
WIDTH			
DEPTH			
WINDOW / DOOR FRAME SIZE (S.F.)			
1	48"	68"	17.11
1	48"	68"	19.56
0	0"	0"	0.00
0	0"	0"	0.00
0	0"	0"	0.00
0	ARCH	0.00	0.00
0	ARCH	0.00	0.00
OPENINGS ALLOWED	76.86	S.F.	
OPENINGS PROVIDED	38.67	S.F.	
ADDITIONAL NOTES			
GLAZED AREA CALCULATED W/ FRAME SIZE MINUS 2" AROUND ENTIRE PERIMETER			



**BLOCK 28 - UPGRADED REAR ELEVATION 'B'**

**BLOCK 28 - FRONT ELEVATION 'B'**

