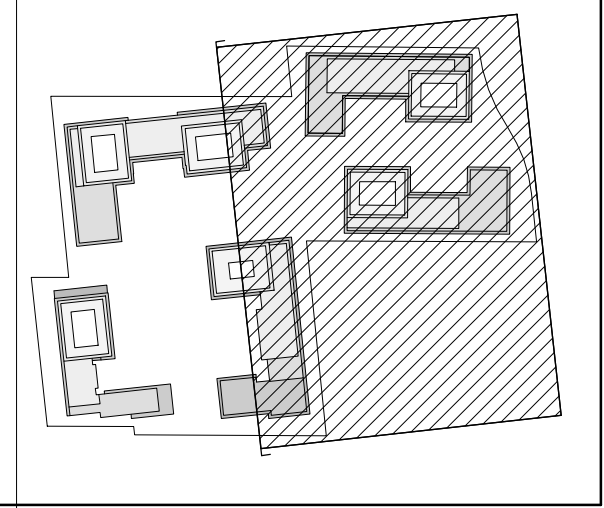


THESE DRAWINGS ARE NOT TO BE SCALED:
ALL DIMENSIONS MUST BE VERIFIED BY CONTRACTOR
PRIOR TO COMMENCEMENT OF ANY WORK. ANY
DISCREPANCIES MUST BE REPORTED DIRECTLY TO SRN
ARCHITECTS INC.

ADDITIONAL NOTES:
THE DRAWING, AS AN INSTRUMENT OF SERVICE, IS
PROVIDED BY AND IS THE PROPERTY OF SRN ARCHITECTS
INC. THE CONTRACTOR MUST VERIFY AND ACCEPT
RESPONSIBILITY FOR ALL DIMENSIONS AND CONDITIONS
ON SITE AND MUST NOTIFY SRN ARCHITECTS INC. OF ANY
VARIATIONS FROM THE SUPPLIED INFORMATION. SRN
ARCHITECTS INC. IS NOT RESPONSIBLE FOR THE
ACCURACY OF SURVEY, STRUCTURAL, MECHANICAL,
ELECTRICAL, ETC. ENGINEERING INFORMATION SHOWN ON
THIS DRAWING REFER TO APPROPRIATE ENGINEERS
DRAWINGS BEFORE PROCEEDING WITH ANY WORK.
CONSTRUCTION MUST CONFORM TO ALL APPLICABLE
CODES AND REQUIREMENTS OF THE AUTHORITIES HAVING
JURISDICTION (UNLESS OTHERWISE NOTED). NO
INVESTIGATION HAS BEEN OR REPORTED ON BY THIS
OFFICE IN REGARDS TO THE ENVIRONMENTAL CONDITION
OF THIS SITE.

CONDITIONS FOR ELECTRONIC INFORMATION TRANSFER:
ELECTRONIC INFORMATION IS SUPPLIED TO THE OTHER
ASSOCIATED FIRMS TO ASSIST THEM IN THE EXECUTION OF
THEIR WORK/REVIEW. THE RECIPIENT FIRMS MUST
DETERMINE THE COMPLETENESS/APPROPRIATENESS/
RELEVANCE OF THE INFORMATION IN RESPECT TO THEIR
PARTICULAR RESPONSIBILITY.

TOWN OF CALEDON
PLANNING
RECEIVED
April 20, 2021



NO.	DATE	REVISION COMMENT
1	4000	KEY PLAN

SRN ARCHITECTS INC SHALL NOT BE RESPONSIBLE FOR:
1. ERRORS, OMISSIONS, INCOMPLETENESS DUE TO LOSS
OF INFORMATION IN WHOLE OR PART WHEN INFORMATION
IS TRANSFERRED.
2. TRANSMISSIONS OF ANY VIRUS OR DAMAGE TO
RECEIVING ELECTRONIC SYSTEM WHEN INFORMATION IS
TRANSFERRED



8395 JANE ST, SUITE 202
VAUGHAN, ONTARIO, L4K 5Y2
PHONE: 905.417.5515 FAX: 905.417.5517

STAMP:
CLIENT:
12599 Hwy 50 Ltd.

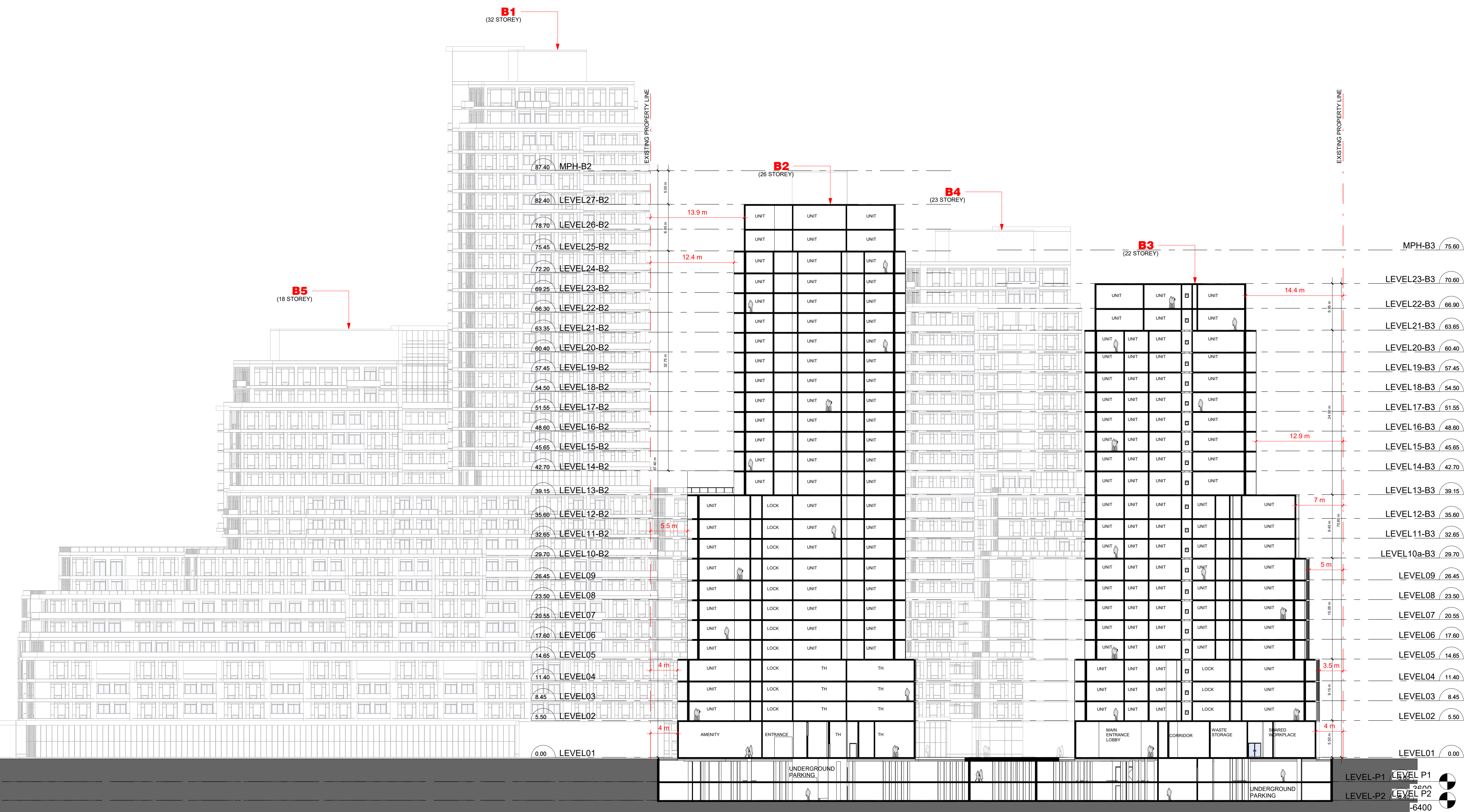
PROJECT:
MIXED USE DEVELOPMENT
12563 & 12599 HWY 50
BOLTON - ONTARIO

DRAWING TITLE:
SECTION 3

DATE: Feb. 26, 2021 SCALE: As indicated

DRAWN BY: EM/FK CHECKED BY: EM/GR

PROJECT NUMBER: S20023 DRAWING NUMBER: A503



SECTION 03
Scale: 1 : 300

1
A503

LEVEL P1
2000
LEVEL P2
-6400

LEVEL P1
2000
LEVEL P2
-6400