

B3_NORTH_ELEVATION 1
Scale: 1 : 200 A417

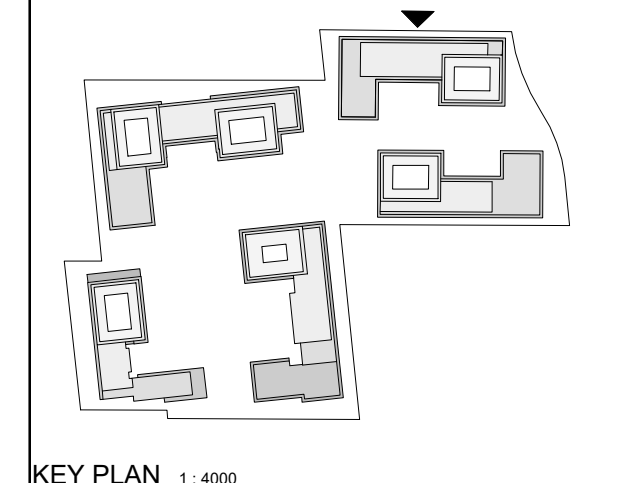
EXTERIOR FINISH LEGEND

- 1A** **PRE-CAST CONCRETE - BLACK HIGH SANDBLAST**
COLOUR : BLACK
MANUFACTURER : TBD
STYLE : TBD
- 1B** **PRE-CAST CONCRETE - GREY HIGH SANDBLAST**
COLOUR : GREY
MANUFACTURER : TBD
SIZE/STYLE : TBD
- 1C** **PRE-CAST CONCRETE - WHITE HIGH SANDBLAST**
COLOUR : WHITE
MANUFACTURER : TBD
SIZE/STYLE : TBD
- 1D** **PRE-CAST CONCRETE - GREY HIGH DEEPER SANDBLAST**
COLOUR : GREY
MANUFACTURER : TBD
SIZE/STYLE : TBD
- 2A** **PREFINISHED WINDOW WALL SYSTEM - VISION PANEL**
EXT. COLOUR : TBD
INT. COLOUR : TBD
MANUFACTURER : TBD
GLASS : TBD
POINT COLOUR : TBD
- 2B** **PREFINISHED WINDOW WALL SYSTEM - OPERABLE AWNING**
EXT. COLOUR : TBD
INT. COLOUR : TBD
MANUFACTURER : TBD
GLASS : TBD
POINT COLOUR : TBD
- 2C** **PREFINISHED WINDOW WALL - GLASS SPANDREL PANEL**
EXT. COLOUR : TBD
INT. COLOUR : TBD
MANUFACTURER : TBD
GLASS : TBD
POINT COLOUR : TBD
- 2D** **PREFINISHED WINDOW WALL SYSTEM - METAL LOUVRES**
EXT. COLOUR : TBD
INT. COLOUR : TBD
MANUFACTURER : TBD
LOUVRES : TBD
- 3A** **PREFINISHED CURTAIN WALL SYSTEM - VISION PANEL**
EXT. COLOUR : TBD
INT. COLOUR : TBD
MANUFACTURER : TBD
GLASS : TBD
POINT COLOUR : TBD
- 3B** **PREFINISHED CURTAIN WALL SYSTEM - GLASS SPANDREL PANEL**
EXT. COLOUR : TBD
INT. COLOUR : TBD
MANUFACTURER : TBD
GLASS : TBD
- 3C** **PREFINISHED CURTAIN WALL - METAL LOUVRES**
EXT. COLOUR : TBD
INT. COLOUR : TBD
MANUFACTURER : TBD
METAL PANEL : TBD
- 4** **ARCHITECTURALLY FINISHED CONCRETE SLAB COATING**
EXT. COLOUR : OFF-WHITE
INT. COLOUR : TBD
MANUFACTURER : TBD
METAL PANEL : TBD
- 5A** **PREFINISHED ALUMINUM COMPOSITE PANEL**
EXT. COLOUR : DARK GRAY
MANUFACTURER : TBD
SIZE/STYLE : TBD
- 5B** **PREFINISHED ALUMINUM COMPOSITE PANEL**
EXT. COLOUR : WHITE
MANUFACTURER : TBD
SIZE/STYLE : TBD
- 6** **MASONRY - BRICK VENEER / OR STONE FINISH**
EXT. COLOUR : WHITE
MANUFACTURER : TBD
SIZE/STYLE : TBD
- 7** **EIFS - STUCCO**
EXT. COLOUR : CLEAR WITH COATED PATTERN
MANUFACTURER : TBD
SIZE/STYLE : TBD
- R1** **BIRD FRIENDLY GLASS BALCONY RAIL**
EXT. COLOUR : CLEAR WITH COATED PATTERN
MANUFACTURER : TBD
SIZE/STYLE : TBD

THESE DRAWINGS ARE NOT TO BE SCALED:
ALL DIMENSIONS MUST BE VERIFIED BY CONTRACTOR
PRIOR TO COMMENCEMENT OF ANY WORK. ANY
DISCREPANCIES MUST BE REPORTED DIRECTLY TO SRN
ARCHITECTS INC.

ADDITIONAL NOTES:
THE DRAWING, AS AN INSTRUMENT OF SERVICE, IS
PROVIDED BY AND IS THE PROPERTY OF SRN ARCHITECTS
INC. THE CONTRACTOR MUST VERIFY AND ACCEPT
RESPONSIBILITY FOR ALL DIMENSIONS AND CONDITIONS
ON SITE AND MUST NOTIFY SRN ARCHITECTS INC. OF ANY
VARIATIONS FROM THE SUPPLIED INFORMATION. SRN
ARCHITECTS INC. IS NOT RESPONSIBLE FOR THE
ACCURACY OF SURVEY, STRUCTURAL, MECHANICAL,
ELECTRICAL, ETC. ENGINEERING INFORMATION SHOWN ON
THIS DRAWING REFER TO APPROPRIATE ENGINEERS
DRAWINGS BEFORE PROCEEDING WITH ANY WORK.
CONSTRUCTION MUST CONFORM TO ALL APPLICABLE
CODES AND REQUIREMENTS OF THE AUTHORITIES HAVING
JURISDICTION (UNDERSTAND OTHERWISE NOTED). NO
INVESTIGATION HAS BEEN OR REPORTED ON BY THIS
OFFICE IN REGARDS TO THE ENVIRONMENTAL CONDITION
OF THIS SITE.
CONDITIONS FOR ELECTRONIC INFORMATION TRANSFER:
ELECTRONIC INFORMATION IS SUPPLIED TO THE OTHER
ASSOCIATED FIRMS TO ASSIST THEM IN THE EXECUTION OF
THEIR WORK/REVIEW. THE RECIPIENT FIRMS MUST
DETERMINE THE COMPLETENESS/APPROPRIATENESS/
RELEVANCE OF THE INFORMATION IN RESPECT TO THEIR
PARTICULAR RESPONSIBILITY.

TOWN OF CALEDON
PLANNING
RECEIVED
Feb. 24, 2022



NO.	DATE	REVISION COMMENT
1	Feb 28th 2021	OPA ZBA
2	Feb 15th 2022	OPA ZBA Rev 01

SRN ARCHITECTS INC SHALL NOT BE RESPONSIBLE FOR:
1. ERRORS, OMISSIONS, INCOMPLETENESS DUE TO LOSS OF INFORMATION IN WHOLE OR PART WHEN INFORMATION IS TRANSFERRED.
2. TRANSMISSIONS OF ANY VIRUS OR DAMAGE TO RECEIVING ELECTRONIC SYSTEM WHEN INFORMATION IS TRANSFERRED



STAMP:
© SRN ARCHITECTS INC. 2017

CLIENT:
12599 Hwy 50 Ltd.

PROJECT:
MIXED USE DEVELOPMENT
12563 & 12599 HWY 50
BOLTON - ONTARIO

DRAWING TITLE:
B3 - NORTH ELEVATION

DATE: Feb. 11, 2022	SCALE: As indicated
DRAWN BY: Author	CHECKED BY: Checker
PROJECT NUMBER: S20023	DRAWING NUMBER: A417