

B1 EAST ELEVATION 1
Scale: 1 : 200 A411

EXTERIOR FINISH LEGEND

- 1A** PRE-CAST CONCRETE - BLACK HIGH SANDBLAST
COLOUR : BLACK
MANUFACTURER : TBD
STYLE : TBD
- 1B** PRE-CAST CONCRETE - GREY HIGH SANDBLAST
COLOUR : GREY
MANUFACTURER : TBD
SIZE/STYLE : TBD
- 1C** PRE-CAST CONCRETE - WHITE HIGH SANDBLAST
COLOUR : WHITE
MANUFACTURER : TBD
SIZE/STYLE : TBD
- 1D** PRE-CAST CONCRETE - GREY HIGH DEEPER SANDBLAST
COLOUR : GREY
MANUFACTURER : TBD
SIZE/STYLE : TBD
- 2A** PREFINISHED WINDOW WALL SYSTEM - VISION PANEL
EXT. COLOUR : TBD
INT. COLOUR : TBD
MANUFACTURER : TBD
GLASS : TBD
PAINT COLOUR : TBD
- 2B** PREFINISHED WINDOW WALL SYSTEM - OPERABLE AWNING
EXT. COLOUR : TBD
INT. COLOUR : TBD
MANUFACTURER : TBD
GLASS : TBD
PAINT COLOUR : TBD
- 2C** PREFINISHED WINDOW WALL - GLASS SPANDREL PANEL
EXT. COLOUR : TBD
INT. COLOUR : TBD
MANUFACTURER : TBD
GLASS : TBD
PAINT COLOUR : TBD
- 2D** PREFINISHED WINDOW WALL SYSTEM - METAL LOUVRES
EXT. COLOUR : TBD
INT. COLOUR : TBD
MANUFACTURER : TBD
LOUVRES : TBD
- 3A** PREFINISHED CURTAIN WALL SYSTEM - VISION PANEL
EXT. COLOUR : TBD
INT. COLOUR : TBD
MANUFACTURER : TBD
GLASS : TBD
PAINT COLOUR : TBD
- 3B** PREFINISHED CURTAIN WALL SYSTEM - GLASS SPANDREL PANEL
EXT. COLOUR : TBD
INT. COLOUR : TBD
MANUFACTURER : TBD
GLASS : TBD
- 3C** PREFINISHED CURTAIN WALL - METAL LOUVRES
EXT. COLOUR : TBD
INT. COLOUR : TBD
MANUFACTURER : TBD
METAL PANEL : TBD
- 4** ARCHITECTURALLY FINISHED CONCRETE SLAB COATING
EXT. COLOUR : OFF-WHITE
INT. COLOUR : TBD
MANUFACTURER : TBD
METAL PANEL : TBD
- 5A** PREFINISHED ALUMINUM COMPOSITE PANEL
EXT. COLOUR : DARK GRAY
MANUFACTURER : TBD
SIZE/STYLE : TBD
- 5B** PREFINISHED ALUMINUM COMPOSITE PANEL
EXT. COLOUR : WHITE
MANUFACTURER : TBD
SIZE/STYLE : TBD
- 6** MASONRY - BRICK VENEER / OR STONE FINISH
EXT. COLOUR : WHITE
MANUFACTURER : TBD
SIZE/STYLE : TBD
- 7** EIFS - STUCCO
EXT. COLOUR : CLEAR WITH COATED PATTERN
MANUFACTURER : TBD
SIZE/STYLE : TBD
- R1** BIRD FRIENDLY GLASS BALCONY RAIL
EXT. COLOUR : CLEAR WITH COATED PATTERN
MANUFACTURER : TBD
SIZE/STYLE : TBD

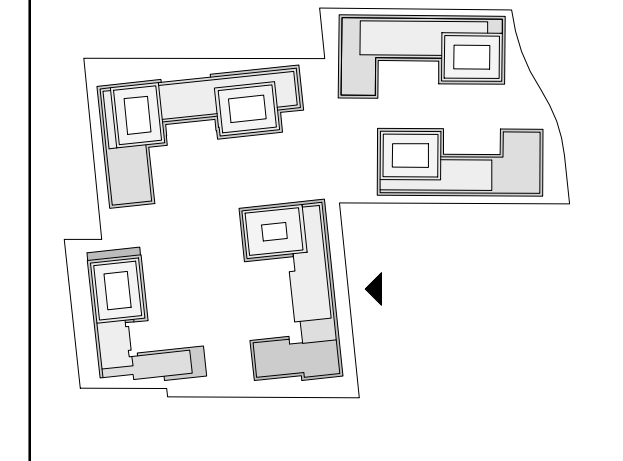
**TOWN OF CALEDON
PLANNING
RECEIVED**

April 20, 2021

THESE DRAWINGS ARE NOT TO BE SCALED:
ALL DIMENSIONS MUST BE VERIFIED BY CONTRACTOR
PRIOR TO COMMENCEMENT OF ANY WORK. ANY
DISCREPANCIES MUST BE REPORTED DIRECTLY TO SRN
ARCHITECTS INC.

ADDITIONAL NOTES:
THE DRAWING, AS AN INSTRUMENT OF SERVICE, IS
PROVIDED BY AND IS THE PROPERTY OF SRN ARCHITECTS
INC. THE CONTRACTOR MUST VERIFY AND ACCEPT
RESPONSIBILITY FOR ALL DIMENSIONS AND CONDITIONS
ON SITE AND MUST NOTIFY SRN ARCHITECTS INC. OF ANY
VARIATIONS FROM THE SUPPLIED INFORMATION. SRN
ARCHITECTS INC. IS NOT RESPONSIBLE FOR THE
ACCURACY OF SURVEY, STRUCTURAL, MECHANICAL,
ELECTRICAL, ETC. ENGINEERING INFORMATION SHOWN ON
THIS DRAWING REFER TO APPROPRIATE ENGINEERS
DRAWINGS BEFORE PROCEEDING WITH ANY WORK.
CONSTRUCTION MUST CONFORM TO ALL APPLICABLE
CODES AND REQUIREMENTS OF THE AUTHORITIES HAVING
JURISDICTION (UNDERSTAND OTHERWISE NOTED). NO
INVESTIGATION HAS BEEN OR REPORTED ON BY THIS
OFFICE IN REGARDS TO THE ENVIRONMENTAL CONDITION
OF THIS SITE.

CONDITIONS FOR ELECTRONIC INFORMATION TRANSFER:
ELECTRONIC INFORMATION IS SUPPLIED TO THE OTHER
ASSOCIATED FIRMS TO ASSIST THEM IN THE EXECUTION OF
THEIR WORK/REVIEW. THE RECIPIENT FIRMS MUST
DETERMINE THE COMPLETENESS/APPROPRIATENESS/
RELEVANCE OF THE INFORMATION IN RESPECT TO THEIR
PARTICULAR RESPONSIBILITY.



NO.	DATE	REVISION COMMENT
1	1/4/2020	KEY PLAN

SRN ARCHITECTS INC SHALL NOT BE RESPONSIBLE FOR:
1. ERRORS, OMISSIONS, INCOMPLETENESS DUE TO LOSS
OF INFORMATION IN WHOLE OR PART WHEN INFORMATION
IS TRANSFERRED.
2. TRANSMISSIONS OF ANY VIRUS OR DAMAGE TO
RECEIVING ELECTRONIC SYSTEM WHEN INFORMATION IS
TRANSFERRED

SRN
ARCHITECTS
8395 JANE ST, SUITE 202
VAUGHAN, ONTARIO. L4K 5Y2
PHONE: 905.417.5515 FAX: 905.417.5517

STAMP:

© SRN ARCHITECTS INC. 2017

CLIENT:

12599 Hwy 50 Ltd.

PROJECT:
MIXED USE DEVELOPMENT
12563 & 12599 HWY 50
BOLTON - ONTARIO

DRAWING TITLE:
B1 - EAST ELEVATION

DATE: Feb. 26, 2021 SCALE: As indicated

DRAWN BY: EM CHECKED BY: EM/GR

PROJECT NUMBER: S20023 DRAWING NUMBER: A411