

**B1 WEST ELEVATION** 1  
Scale: 1 : 200 A410

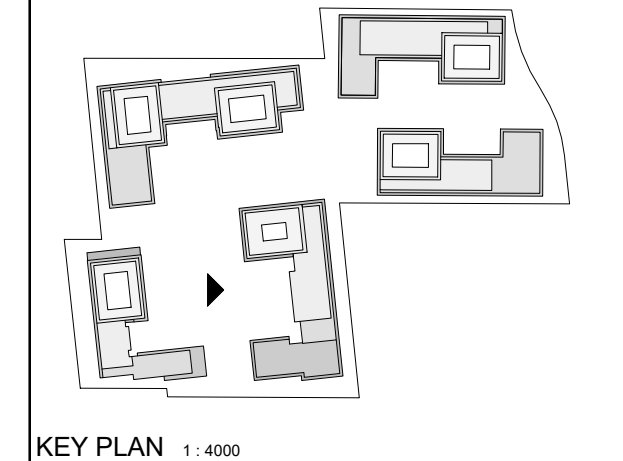
**EXTERIOR FINISH LEGEND**

- 1A** PRE-CAST CONCRETE - BLACK HIGH SANDBLAST  
COLOUR : BLACK  
MANUFACTURER : TBD  
STYLE : TBD
- 1B** PRE-CAST CONCRETE - GREY HIGH SANDBLAST  
COLOUR : GREY  
MANUFACTURER : TBD  
SIZE/STYLE : TBD
- 1C** PRE-CAST CONCRETE - WHITE HIGH SANDBLAST  
COLOUR : WHITE  
MANUFACTURER : TBD  
SIZE/STYLE : TBD
- 1D** PRE-CAST CONCRETE - GREY HIGH DEEPER SANDBLAST  
COLOUR : GREY  
MANUFACTURER : TBD  
SIZE/STYLE : TBD
- 2A** PREFINISHED WINDOW WALL SYSTEM - VISION PANEL  
EXT. COLOUR : TBD  
INT. COLOUR : TBD  
MANUFACTURER : TBD  
GLASS : TBD  
PAINT COLOUR : TBD
- 2B** PREFINISHED WINDOW WALL SYSTEM - OPERABLE AWNING  
EXT. COLOUR : TBD  
INT. COLOUR : TBD  
MANUFACTURER : TBD  
GLASS : TBD  
PAINT COLOUR : TBD
- 2C** PREFINISHED WINDOW WALL - GLASS SPANDREL PANEL  
EXT. COLOUR : TBD  
INT. COLOUR : TBD  
MANUFACTURER : TBD  
GLASS : TBD  
PAINT COLOUR : TBD
- 2D** PREFINISHED WINDOW WALL SYSTEM - METAL LOUVRES  
EXT. COLOUR : TBD  
INT. COLOUR : TBD  
MANUFACTURER : TBD  
LOUVRES : TBD
- 3A** PREFINISHED CURTAIN WALL SYSTEM - VISION PANEL  
EXT. COLOUR : TBD  
INT. COLOUR : TBD  
MANUFACTURER : TBD  
GLASS : TBD  
PAINT COLOUR : TBD
- 3B** PREFINISHED CURTAIN WALL SYSTEM - GLASS SPANDREL PANEL  
EXT. COLOUR : TBD  
INT. COLOUR : TBD  
MANUFACTURER : TBD  
GLASS : TBD
- 3C** PREFINISHED CURTAIN WALL - METAL LOUVRES  
EXT. COLOUR : TBD  
INT. COLOUR : TBD  
MANUFACTURER : TBD  
METAL PANEL : TBD
- 4** ARCHITECTURALLY FINISHED CONCRETE SLAB COATING  
EXT. COLOUR : OFF-WHITE  
INT. COLOUR : TBD  
MANUFACTURER : TBD  
METAL PANEL : TBD
- 5A** PREFINISHED ALUMINUM COMPOSITE PANEL  
EXT. COLOUR : DARK GRAY  
MANUFACTURER : TBD  
SIZE/STYLE : TBD
- 5B** PREFINISHED ALUMINUM COMPOSITE PANEL  
EXT. COLOUR : WHITE  
MANUFACTURER : TBD  
SIZE/STYLE : TBD
- 6** MASONRY - BRICK VENEER / OR STONE FINISH  
EXT. COLOUR : WHITE  
MANUFACTURER : TBD  
SIZE/STYLE : TBD
- 7** EIFS - STUCCO  
EXT. COLOUR : CLEAR WITH COATED PATTERN  
MANUFACTURER : TBD  
SIZE/STYLE : TBD
- R1** BIRD FRIENDLY GLASS BALCONY RAIL  
EXT. COLOUR : CLEAR WITH COATED PATTERN  
MANUFACTURER : TBD  
SIZE/STYLE : TBD

**TOWN OF CALEDON  
PLANNING  
RECEIVED**  
April 20, 2021

THESE DRAWINGS ARE NOT TO BE SCALED.  
ALL DIMENSIONS MUST BE VERIFIED BY CONTRACTOR  
PRIOR TO COMMENCEMENT OF ANY WORK. ANY  
DISCREPANCIES MUST BE REPORTED DIRECTLY TO SRN  
ARCHITECTS INC.

ADDITIONAL NOTES:  
THE DRAWING, AS AN INSTRUMENT OF SERVICE, IS  
PROVIDED BY AND IS THE PROPERTY OF SRN ARCHITECTS  
INC. THE CONTRACTOR MUST VERIFY AND ACCEPT  
RESPONSIBILITY FOR ALL DIMENSIONS AND CONDITIONS  
ON SITE AND MUST NOTIFY SRN ARCHITECTS INC. OF ANY  
VARIATIONS FROM THE SUPPLIED INFORMATION. SRN  
ARCHITECTS INC. IS NOT RESPONSIBLE FOR THE  
ACCURACY OF SURVEY, STRUCTURAL, MECHANICAL,  
ELECTRICAL, ETC. ENGINEERING INFORMATION SHOWN ON  
THIS DRAWING REFER TO APPROPRIATE ENGINEERS  
DRAWINGS BEFORE PROCEEDING WITH ANY WORK.  
CONSTRUCTION MUST CONFORM TO ALL APPLICABLE  
CODES AND REQUIREMENTS OF THE AUTHORITIES HAVING  
JURISDICTION (UNLESS OTHERWISE NOTED). NO  
INVESTIGATION HAS BEEN OR REPORTED ON BY THIS  
OFFICE IN REGARDS TO THE ENVIRONMENTAL CONDITION  
OF THIS SITE.  
CONDITIONS FOR ELECTRONIC INFORMATION TRANSFER:  
ELECTRONIC INFORMATION IS SUPPLIED TO THE OTHER  
ASSOCIATED FIRMS TO ASSIST THEM IN THE EXECUTION OF  
THEIR WORK/REVIEW. THE RECIPIENT FIRMS MUST  
DETERMINE THE COMPLETENESS/APPROPRIATENESS/  
RELEVANCE OF THE INFORMATION IN RESPECT TO THEIR  
PARTICULAR RESPONSIBILITY.



NO.	DATE	REVISION COMMENT

SRN ARCHITECTS INC SHALL NOT BE RESPONSIBLE FOR:  
1. ERRORS, OMISSIONS, INCOMPLETENESS DUE TO LOSS  
OF INFORMATION IN WHOLE OR PART WHEN INFORMATION  
IS TRANSFERRED.  
2. TRANSMISSIONS OF ANY VIRUS OR DAMAGE TO  
RECEIVING ELECTRONIC SYSTEM WHEN INFORMATION IS  
TRANSFERRED

**SRN**  
ARCHITECTS  
8395 JANE ST, SUITE 202  
VAUGHAN, ONTARIO, L4K 5Y2  
PHONE: 905.417.5515 FAX: 905.417.5517

STAMP:	
© SRN ARCHITECTS INC. 2017	
CLIENT:	12599 Hwy 50 Ltd.
PROJECT:	MIXED USE DEVELOPMENT 12563 & 12599 HWY 50 BOLTON - ONTARIO
DRAWING TITLE:	B1 - WEST ELEVATION
DATE: Feb. 26, 2021	SCALE: As indicated
DRAWN BY: EM	CHECKED BY: EM/GR
PROJECT NUMBER: S20023	DRAWING NUMBER: A410