

December 16, 2022

Project No. 19129150

**Mr. David Hanratty, Director of Land, Resources and Environment**

CBM Aggregates, a division of St. Marys Cement Inc. (Canada)  
55 Industrial Street  
Toronto, Ontario  
M4G 3W9

**SUMMARY OF PHASE ONE ENVIRONMENTAL SITE ASSESSMENTS, 12 SITES IN CALEDON, ONTARIO**

Dear Mr. Hanratty,

Golder Associates Ltd., a member of WSP (Golder), was retained by CBM Aggregates, a division of St. Marys Cement Inc. (Canada) (CBM) to complete Phase One Environmental Site Assessments (ESAs) for the following 12 sites located in Caledon, Ontario:

- Site 1 - Main Street and Charleston Sideroad (Property Identification Number ("PIN") 14272-0421)
- Site 2 - 8722 Main Street (PIN 14273-0086)
- Site 3 - 18667 Mississauga Road (PIN 14273-0089)
- Site 4 - Main Street (PIN 14273-0323)
- Site 5 - Main Street (PIN 14273-0345)
- Site 6 - Main Street and Charleston Sideroad (PIN 14273-0561)
- Site 7 - Charleston Sideroad (PIN 14274-0018)
- Site 8 - 18501 Mississauga Road
- Site 9 - 1420 Charleston Side Road (PIN 14273-0094)
- Site 10 - 18221 Mississauga Road (PIN 14271-0007)
- Site 11 - 1055 Charleston Sideroad (PIN 14271-0004)
- Site 12 - Part of 1455 Charleston Sideroad (PINs 14271-0004 and 14271-0363)

The Phase One ESAs for Sites 1 to 7, and 9 to 12 were completed in accordance with Ontario Regulation (O.Reg.) 153/04 and included review of available current and historical information, site visits, interviews, evaluation of readily available information, and reporting.

The Phase I ESA for Site 8 was completed in accordance with Canadian Standards Association (“CSA”) Standard Z768-01, *Phase I Environmental Site Assessment* (reaffirmed 2016) and included a review of current and historical information, site visit, interview, evaluation of readily available information, and reporting.

## **SUMMARY OF FINDINGS**

The Phase One ESA reports for all Sites are attached.

No PCAs resulting in APECS were identified at Sites 4, 5, 8, 9, 10, 11 and 12.

Potentially contaminating activities (PCAs) resulting in areas of potential environmental concern (APECs) were identified at Sites 1, 2, 3, 6 and 7. A Phase Two ESA is not required for aggregate extraction.

**Golder Associates Ltd.**

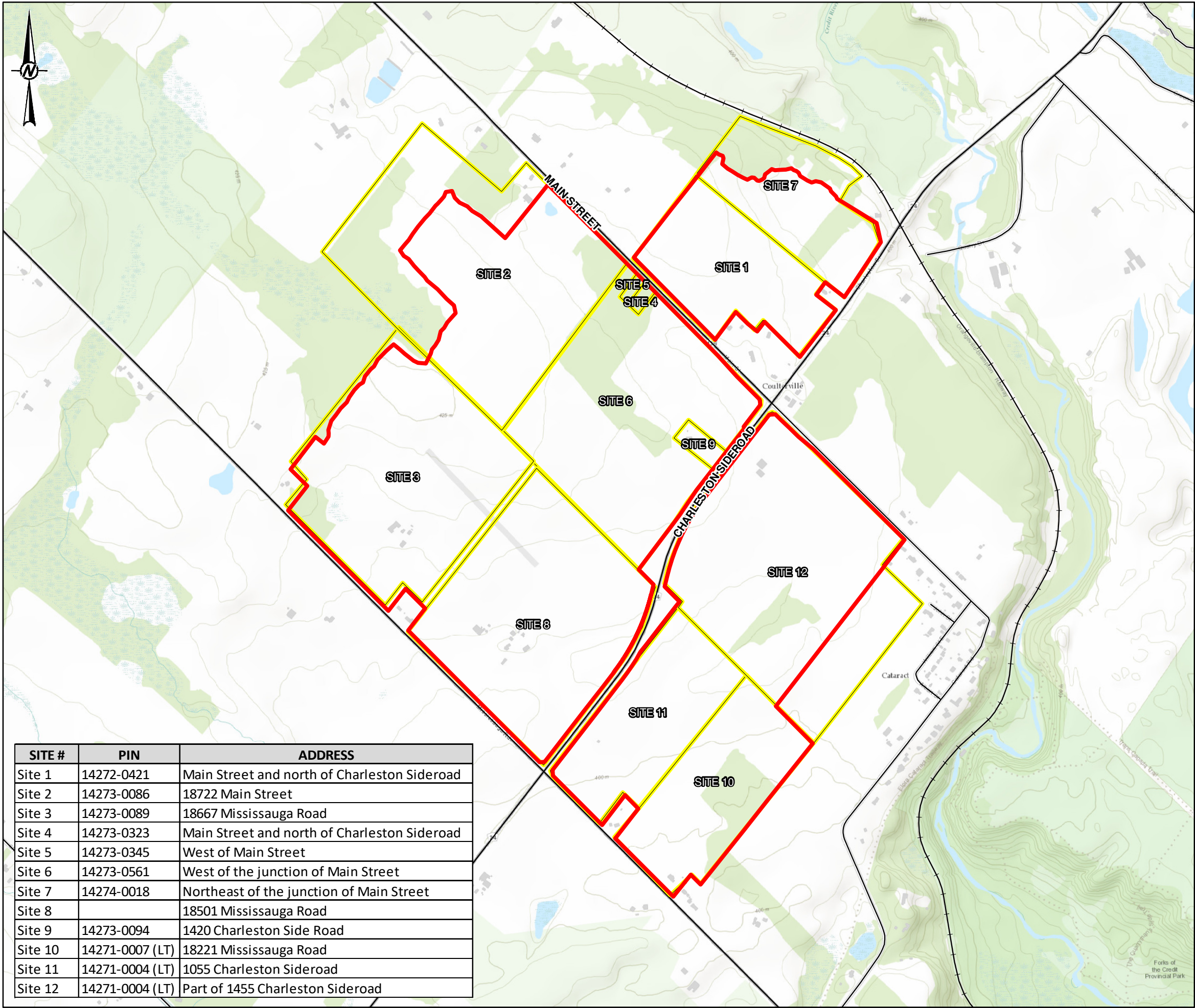
RN/KM/la;mp

Attachments: Figure 1 – Site Boundaries

[https://golderassociates.sharepoint.com/sites/114392/project files/6 deliverables/ph 2000-phase 1 esa/reports/19129150-l-rev0-vcna-ph one esa rpts summary-16dec2022.docx](https://golderassociates.sharepoint.com/sites/114392/project%20files/6%20deliverables/ph%202000-phase%201%20esa/reports/19129150-l-rev0-vcna-ph%20one%20esa%20rpts%20summary-16dec2022.docx)

## Figures

RATH:S:\Clients\Volcanism\_Central\Long\_Par\_5\_Caledon\99\_PRC\19129150\40\_PRC\0003\_AuthorRequests\19129150-0009-MS-0006.mxd PRINTED ON: 2022-11-25 AT: 1:10:17 PM



SITE #	PIN	ADDRESS
Site 1	14272-0421	Main Street and north of Charleston Sideroad
Site 2	14273-0086	18722 Main Street
Site 3	14273-0089	18667 Mississauga Road
Site 4	14273-0323	Main Street and north of Charleston Sideroad
Site 5	14273-0345	West of Main Street
Site 6	14273-0561	West of the junction of Main Street
Site 7	14274-0018	Northeast of the junction of Main Street
Site 8		18501 Mississauga Road
Site 9	14273-0094	1420 Charleston Side Road
Site 10	14271-0007 (LT)	18221 Mississauga Road
Site 11	14271-0004 (LT)	1055 Charleston Sideroad
Site 12	14271-0004 (LT)	Part of 1455 Charleston Sideroad

LEGEND

PHASE ONE PROPERTY BOUNDARY

LICENCE BOUNDARY



- REFERENCE(S)
1. BASE DATA MNRF LIO OBTAINED 2020

2. IMAGERY FIRSTBASE SOLUTIONS SPRING 2021, SPRING 2019 (15CM RESOLUTION) AND SOURCES: ESRI, HERE, GARMIN, INTERMAP, INCREMENT P CORP., GEBCO, USGS, FAO, NPS, NRCAN, GEOBASE, IGN, KADASTER NL, ORDNANCE SURVEY, ESRI JAPAN, METI, ESRI CHINA (HONG KONG), (C) OPENSTREETMAP CONTRIBUTORS, AND THE GIS USER COMMUNITY

3. SITE TOPOGRAPHIC DATA - SPRING 2021, FIRSTBASE SOLUTIONS, 2021

4. PROJECTION: TRANSVERSE MERCATOR DATUM: NAD 83 COORDINATE SYSTEM: UTM ZONE 17N

CLIENT

CBM AGGREGATES, A DIVISION OF ST. MARYS CEMENT INC. (CANADA).

PROJECT

CALEDON QUARRY  
DUST BEST MANAGEMENT PRACTICES PLAN

TITLE

PHASE 1 ESA COMPLETED

CONSULTANT	YYYY-MM-DD	2022-11-25
	DESIGNED	CGE
	PREPARED	CGE
	REVIEWED	KM
	APPROVED	HM



IF THIS MEASUREMENT DOES NOT MATCH WHAT IS SHOWN, THE SHEET SIZE HAS BEEN MODIFIED FROM: ANSI B