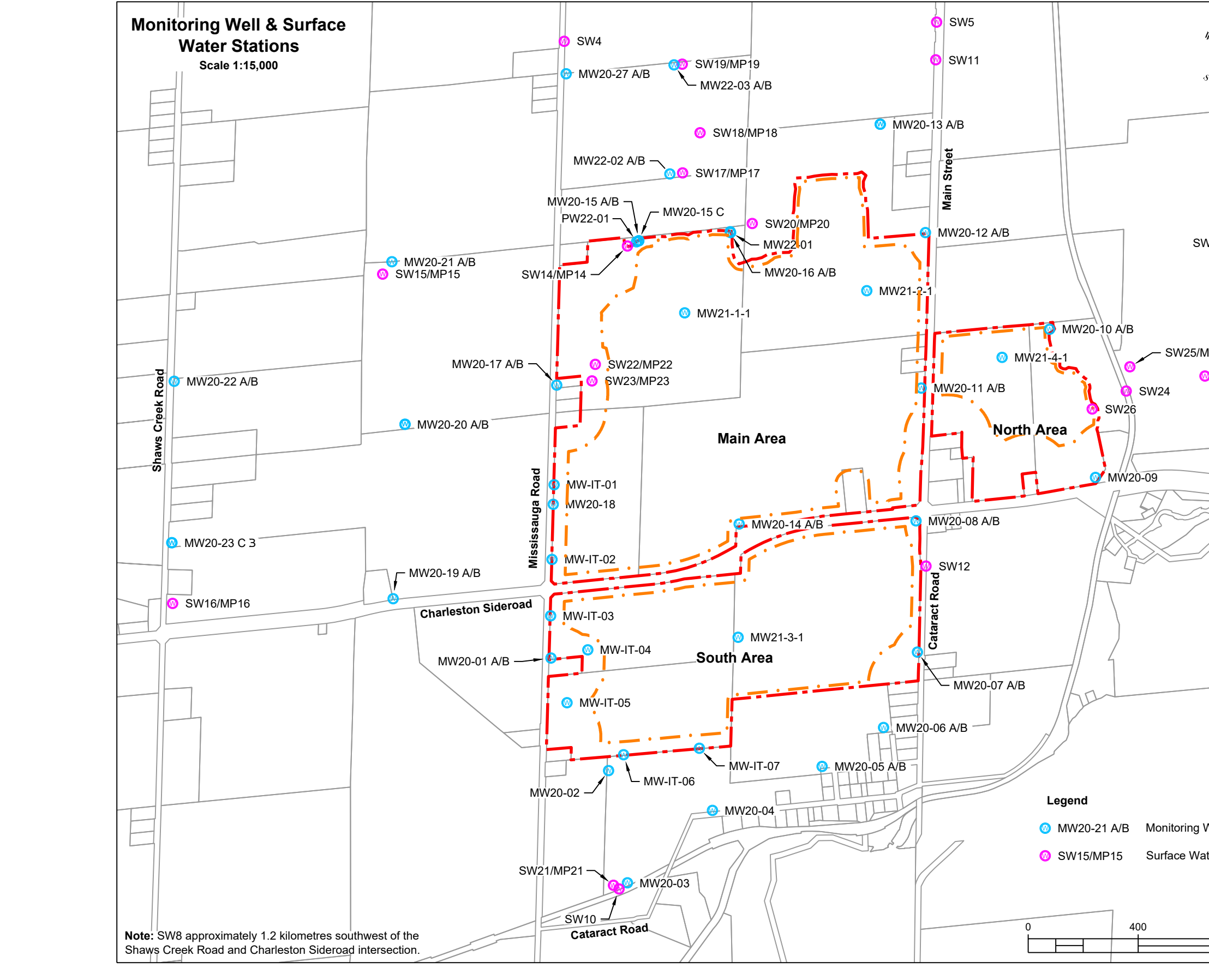
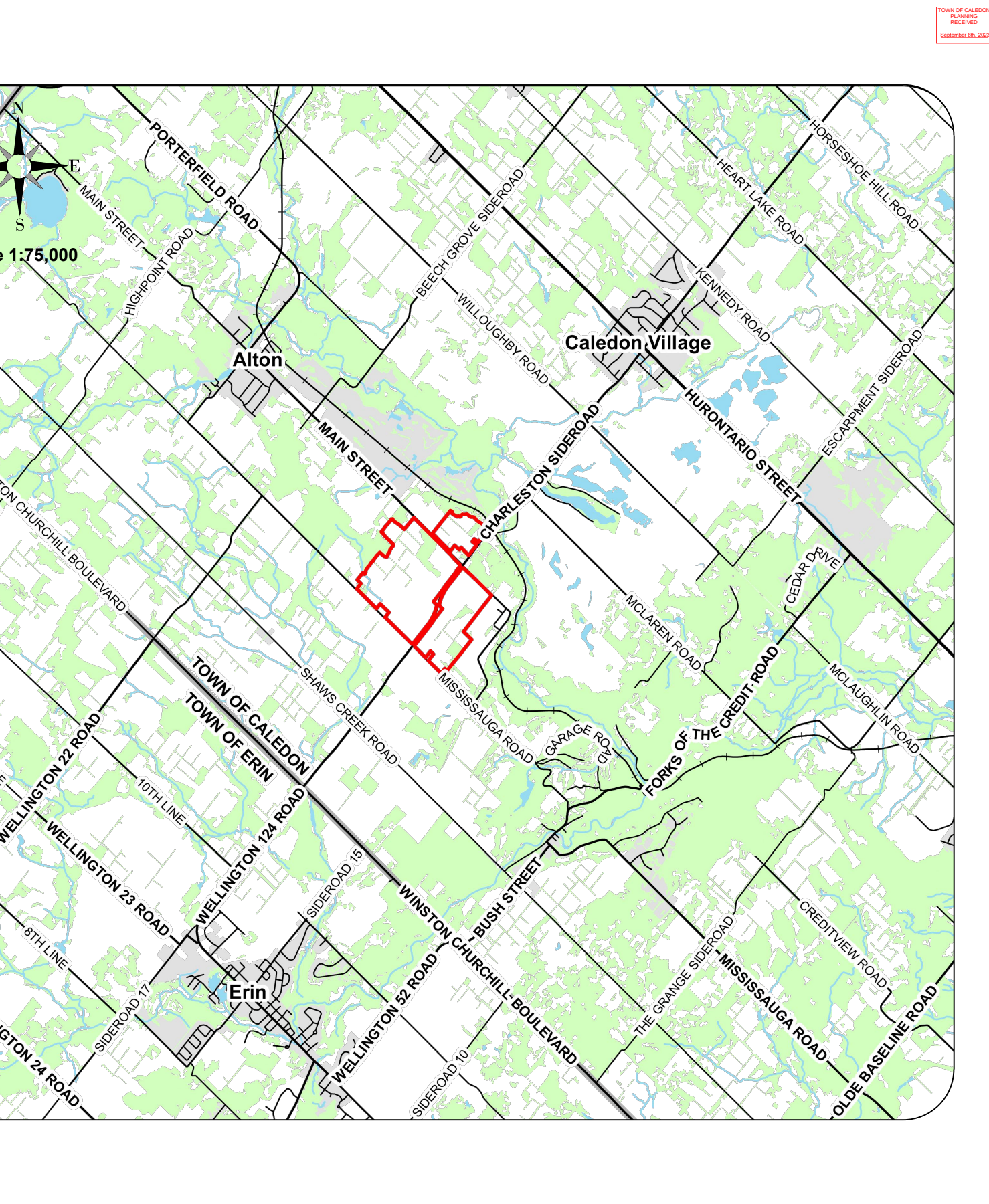
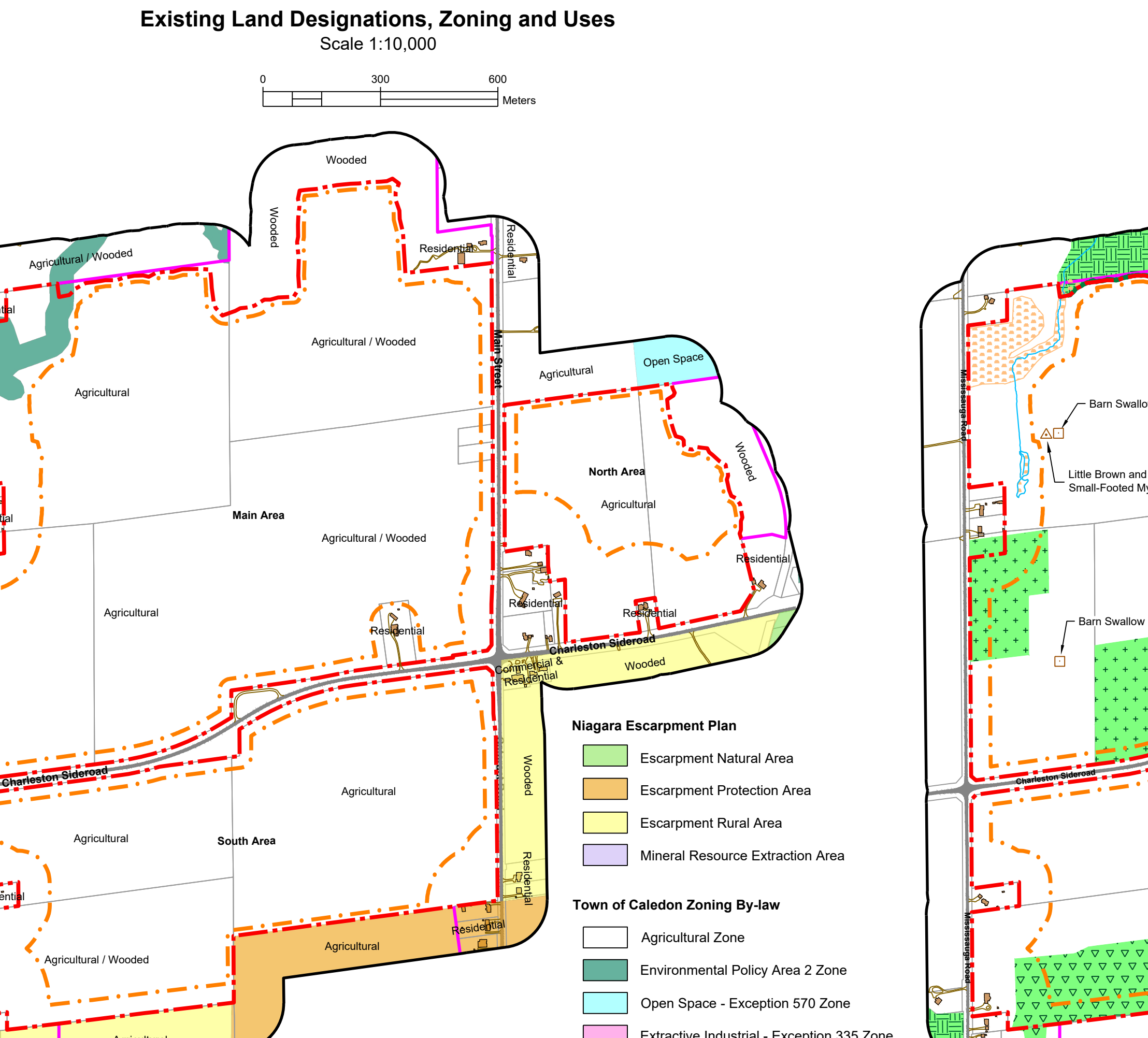


- A. General**
- This site plan is prepared under the Aggregate Resources Act for a Class 'A' licence for a pit and quarry below the ground water table.
  - Area Calculations:
    - 2.1. Licence (total) **261.2 hectares**
    - 2.2. Main Area: 151.5 hectares
    - 2.3. North Area: 92.3 hectares
    - 2.4. South Area: 79.4 hectares
  - North and existing coordinates have been provided for select corners of the licence boundaries and at the centre point of every entrance and exit that intersects the licence boundaries on the plan view of this drawing.
- B. References**
- Contours were obtained from First Base Solutions and are displayed in one metre intervals. Elevations shown are in metres above sea level (MASL).
  - Topographic information was obtained from numerous sources including First Base Solutions, LIDAR information, Ontario and field investigations for technical reports.
  - All geologic features and structures are shown to scale in (General Transverse Mercator (UTM) with North American Datum 1983 (NAD83), Zone 17 (NAD83), Central Meridian 81 degrees west coordinate system).
  - The Main Area licence boundary was established based on a compiled plan of survey completed by Depp & Jenkins North Limited, Ontario Land Surveyors, on February 14, 2022 which utilized the following information: Plan 439/3983, 439/3407, 439/2355, 439/5571, 439/1778, 439/4621, 439/2423, 439/2443, and Instruments R0144974 and R0104831. The North and South Area licence boundaries are based on the Municipal Property Assessment Corporation parcel fabric.
  - Existing zoning on and within 120 metres of the licence boundaries are from the Town of Caledon Zoning By-law 2005-03, Schedule 'K', Zone Maps (4 (last updated August 21, 2015), 74 (last updated March 24, 2016) and 75 (last updated August 21, 2015)). The Main Area is currently zoned Agricultural Zone (A1) and Environmental Policy Area 2 Zone (EPA2) while the North and South Areas are currently zoned Agricultural Zone (A1).
  - Existing land use designations within 120 metres of the licence boundaries are from the Niagara Escarpment Plan - Map 4, dated June 1, 2017.
  - Land use information and structures identified on and within 120 metres of the licence boundaries were determined using aerial photography captured in the spring of 2021 from First Base Solutions.
- C. Drainage**
- Surface drainage on and within 120 metres of the licence boundaries is by overland flow in the directions shown by arrows on the plan view, or by infiltration.
- D. Groundwater**
- The maximum predicted groundwater table, based on groundwater levels monitored over a 12 month period from January to December 2021, are as follows:
    - 1.1. Main Area - Ranges from 420.7 to 393.5 masl (north to south)
    - 1.2. North Area - Ranges from 407.0 to 397.3 masl (northwest to southeast)
    - 1.3. South Area - Ranges from 405.3 to 391.0 masl (northwest to south)
  - The maximum predicted groundwater table elevations are shown in each cross section on drawing 1 of 4 and 4 of 4.



- Table 1: On-Site Groundwater and Surface Water Monitoring Program**
- | Name       | Type     | Northing | Easting | Monitoring Scope                             |
|------------|----------|----------|---------|--|
| MW20-01 AB | Mon Well | 4852268  | 577450  | Water level <sup>1</sup>                     |
| MW20-02 AB | Mon Well | 4852250  | 578300  | Water level <sup>1</sup>                     |
| MW20-03 AB | Mon Well | 4853575  | 578100  | Water level <sup>1</sup>                     |
| MW20-04 AB | Mon Well | 4854157  | 578344  | Water level <sup>1</sup>                     |
| MW20-05 AB | Mon Well | 4854407  | 577698  | Water level <sup>1</sup>                     |
| MW20-06 AB | Mon Well | 4853921  | 577672  | Water level <sup>1</sup>                     |
| MW20-07 AB | Mon Well | 4854521  | 577272  | Water level <sup>1</sup>                     |
| MW20-08 AB | Mon Well | 4853700  | 577076  | Water level <sup>1</sup>                     |
| MW20-09 AB | Mon Well | 4853564  | 576577  | Water level <sup>1</sup>                     |
| MW20-10 AB | Mon Well | 4853807  | 576795  | Water level <sup>1</sup>                     |
| MW20-11 AB | Mon Well | 4852906  | 576762  | Water level <sup>1</sup>                     |
| MW20-12 AB | Mon Well | 4852609  | 577058  | Water level <sup>1</sup>                     |
| MW20-13 AB | Mon Well | 4853485  | 576852  | Water level <sup>1</sup>                     |
| MW20-14 AB | Mon Well | 4854211  | 577273  | Water level <sup>1</sup>                     |
| MW20-15 AB | Mon Well | 4852814  | 577872  | Water level <sup>1</sup>                     |
| MW20-16 AB | Mon Well | 4854211  | 577793  | Water level <sup>1</sup>                     |
| MW20-17 AB | Mon Well | 4853508  | 578123  | Water level <sup>1</sup>                     |
| MW20-18 AB | Mon Well | 4853794  | 578478  | Water level <sup>1</sup>                     |
| MW20-19 AB | Mon Well | 4854076  | 578281  | Water level <sup>1</sup>                     |
| MW20-20 AB | Mon Well | 4853250  | 578574  | Water level <sup>1</sup>                     |
| MW20-21 AB | SWMP     | 4853000  | 578940  | Water level & temperature <sup>2</sup>       |
| MW20-22 AB | SWMP     | 4853225  | 578800  | Water level & temperature <sup>2</sup>       |
| MW20-23 C  | SWMP     | 4854320  | 578195  | TBD by MECF PTTW & ECA Approval <sup>3</sup> |
| MW-IT-01   | Mon Well | 4852710  | 577000  | Water level <sup>1</sup>                     |
| MW-IT-02   | Mon Well | 4852918  | 577201  | Water level <sup>1</sup>                     |
| MW-IT-03   | Mon Well | 4852973  | 577360  | Water level <sup>1</sup>                     |
| MW-IT-04   | Mon Well | 4852386  | 577520  | Water level <sup>1</sup>                     |
| MW-IT-05   | Mon Well | 4852199  | 577617  | Water level <sup>1</sup>                     |
| MW-IT-06   | Mon Well | 4852118  | 577898  | Water level <sup>1</sup>                     |
| MW-IT-07   | Mon Well | 4852434  | 578068  | Water level <sup>1</sup>                     |
- Table 2: Off-Site Groundwater and Surface Water Monitoring Program**
- | Name       | Type     | Northing | Easting | Monitoring Scope                           |
|------------|----------|----------|---------|--|
| MW20-02    | Mon Well | 4852138  | 577900  | Water level <sup>1</sup>                   |
| MW20-03    | Mon Well | 4851907  | 578244  | Water level <sup>1</sup>                   |
| MW20-04    | Mon Well | 4852313  | 578205  | Water level <sup>1</sup>                   |
| MW20-05 AB | Mon Well | 4852713  | 578423  | Water level <sup>1</sup>                   |
| MW20-06 AB | Mon Well | 4852973  | 578474  | Water level <sup>1</sup>                   |
| MW20-07 AB | Mon Well | 4854473  | 578873  | Water level <sup>1</sup>                   |
| MW20-13 C  | Mon Well | 4854473  | 578873  | Water level <sup>1</sup>                   |
| MW20-19 AB | Mon Well | 4852900  | 578977  | Water level <sup>1</sup>                   |
| MW20-20 AB | Mon Well | 4852468  | 578478  | Water level <sup>1</sup>                   |
| MW20-20 C  | Mon Well | 4852468  | 578478  | Water level <sup>1</sup>                   |
| MW20-21 AB | Mon Well | 4852840  | 578114  | Water level <sup>1</sup>                   |
| MW20-22 AB | Mon Well | 4851908  | 578195  | Water level <sup>1</sup>                   |
| MW20-23 AB | Mon Well | 4851556  | 578206  | Water level <sup>1</sup>                   |
| MW20-23 C  | Mon Well | 4851556  | 578206  | Water level <sup>1</sup>                   |
| MW20-23 AB | Mon Well | 4853770  | 578594  | Water level <sup>1</sup>                   |
| SW4        | SW       | 4852963  | 574700  | Water level and temperature <sup>2,4</sup> |
| SW5        | SW       | 4853846  | 575883  | Water level and temperature <sup>2,4</sup> |
| SW8        | SW       | 4851688  | 578554  | Water level and temperature <sup>2,4</sup> |
| SW10       | SW       | 4850268  | 579128  | Water level and temperature <sup>2,4</sup> |
| SW11       | SW       | 4851869  | 578238  | Water level and temperature <sup>2,4</sup> |
| SW12       | SW       | 4854767  | 578840  | Water level and temperature <sup>2,4</sup> |
| SW15       | SW       | 4853488  | 578193  | Water level and temperature <sup>2,4</sup> |
| SW15MPP15  | SWMP     | 4853501  | 578562  | Water level and temperature <sup>2,4</sup> |
| SW16MPP16  | SWMP     | 4852785  | 578024  | Water level and temperature <sup>2,4</sup> |
| SW17MPP17  | SWMP     | 4853803  | 578468  | Water level and temperature <sup>2,4</sup> |
| SW18MPP18  | SWMP     | 4853963  | 578306  | Water level and temperature <sup>2,4</sup> |
| SW19MPP19  | SWMP     | 4854106  | 578226  | Water level and temperature <sup>2,4</sup> |
| SW20MPP20  | SWMP     | 4853800  | 578110  | Water level and temperature <sup>2,4</sup> |
| SW21MPP21  | SWMP     | 4851885  | 578215  | Water level and temperature <sup>2,4</sup> |
| SW24       | SW       | 4854445  | 578193  | Water level and temperature <sup>2,4</sup> |
| SW-CR-CP25 | SWMP     | 4854225  | 578133  | Water level and temperature <sup>2,4</sup> |
| SW-CR      | SW       | 4854700  | 578350  | Water quality <sup>1,4</sup>               |



**Table 1: On-Site Groundwater and Surface Water Monitoring Program**

Name	Type	Northing	Easting	Monitoring Scope
MW20-01 AB	Mon Well	4852268	577450	Water level <sup>1</sup>
MW20-02 AB	Mon Well	4852250	578300	Water level <sup>1</sup>
MW20-03 AB	Mon Well	4853575	578100	Water level <sup>1</sup>
MW20-04 AB	Mon Well	4854157	578344	Water level <sup>1</sup>
MW20-05 AB	Mon Well	4854407	577698	Water level <sup>1</sup>
MW20-06 AB	Mon Well	4853921	577672	Water level <sup>1</sup>
MW20-07 AB	Mon Well	4854521	577272	Water level <sup>1</sup>
MW20-08 AB	Mon Well	4853700	577076	Water level <sup>1</sup>
MW20-09 AB	Mon Well	4853564	576577	Water level <sup>1</sup>
MW20-10 AB	Mon Well	4853807	576795	Water level <sup>1</sup>
MW20-11 AB	Mon Well	4852906	576762	Water level <sup>1</sup>
MW20-12 AB	Mon Well	4852609	577058	Water level <sup>1</sup>
MW20-13 AB	Mon Well	4853485	576852	Water level <sup>1</sup>
MW20-14 AB	Mon Well	4854211	577273	Water level <sup>1</sup>
MW20-15 AB	Mon Well	4852814	577872	Water level <sup>1</sup>
MW20-16 AB	Mon Well	4854211	577793	Water level <sup>1</sup>
MW20-17 AB	Mon Well	4853508	578123	Water level <sup>1</sup>
MW20-18 AB	Mon Well	4853794	578478	Water level <sup>1</sup>
MW20-19 AB	Mon Well	4854076	578281	Water level <sup>1</sup>
MW20-20 AB	Mon Well	4853250	578574	Water level <sup>1</sup>
MW20-21 AB	SWMP	4853000	578940	Water level & temperature <sup>2</sup>
MW20-22 AB	SWMP	4853225	578800	Water level & temperature <sup>2</sup>
MW20-23 C	SWMP	4854320	578195	TBD by MECF PTTW & ECA Approval <sup>3</sup>
MW-IT-01	Mon Well	4852710	577000	Water level <sup>1</sup>
MW-IT-02	Mon Well	4852918	577201	Water level <sup>1</sup>
MW-IT-03	Mon Well	4852973	577360	Water level <sup>1</sup>
MW-IT-04	Mon Well	4852386	577520	Water level <sup>1</sup>
MW-IT-05	Mon Well	4852199	577617	Water level <sup>1</sup>
MW-IT-06	Mon Well	4852118	577898	Water level <sup>1</sup>
MW-IT-07	Mon Well	4852434	578068	Water level <sup>1</sup>

**Table 2: Off-Site Groundwater and Surface Water Monitoring Program**

Name	Type	Northing	Easting	Monitoring Scope
MW20-02	Mon Well	4852138	577900	Water level <sup>1</sup>
MW20-03	Mon Well	4851907	578244	Water level <sup>1</sup>
MW20-04	Mon Well	4852313	578205	Water level <sup>1</sup>
MW20-05 AB	Mon Well	4852713	578423	Water level <sup>1</sup>
MW20-06 AB	Mon Well	4852973	578474	Water level <sup>1</sup>
MW20-07 AB	Mon Well	4854473	578873	Water level <sup>1</sup>
MW20-13 C	Mon Well	4854473	578873	Water level <sup>1</sup>
MW20-19 AB	Mon Well	4852900	578977	Water level <sup>1</sup>
MW20-20 AB	Mon Well	4852468	578478	Water level <sup>1</sup>
MW20-20 C	Mon Well	4852468	578478	Water level <sup>1</sup>
MW20-21 AB	Mon Well	4852840	578114	Water level <sup>1</sup>
MW20-22 AB	Mon Well	4851908	578195	Water level <sup>1</sup>
MW20-23 AB	Mon Well	4851556	578206	Water level <sup>1</sup>
MW20-23 C	Mon Well	4851556	578206	Water level <sup>1</sup>
MW20-23 AB	Mon Well	4853770	578594	Water level <sup>1</sup>
SW4	SW	4852963	574700	Water level and temperature <sup>2,4</sup>
SW5	SW	4853846	575883	Water level and temperature <sup>2,4</sup>
SW8	SW	4851688	578554	Water level and temperature <sup>2,4</sup>
SW10	SW	4850268	579128	Water level and temperature <sup>2,4</sup>
SW11	SW	4851869	578238	Water level and temperature <sup>2,4</sup>
SW12	SW	4854767	578840	Water level and temperature <sup>2,4</sup>
SW15	SW	4853488	578193	Water level and temperature <sup>2,4</sup>
SW15MPP15	SWMP	4853501	578562	Water level and temperature <sup>2,4</sup>
SW16MPP16	SWMP	4852785	578024	Water level and temperature <sup>2,4</sup>
SW17MPP17	SWMP	4853803	578468	Water level and temperature <sup>2,4</sup>
SW18MPP18	SWMP	4853963	578306	Water level and temperature <sup>2,4</sup>
SW19MPP19	SWMP	4854106	578226	Water level and temperature <sup>2,4</sup>
SW20MPP20	SWMP	4853800	578110	Water level and temperature <sup>2,4</sup>
SW21MPP21	SWMP	4851885	578215	Water level and temperature <sup>2,4</sup>
SW24	SW	4854445	578193	Water level and temperature <sup>2,4</sup>
SW-CR-CP25	SWMP	4854225	578133	Water level and temperature <sup>2,4</sup>
SW-CR	SW	4854700	578350	Water quality <sup>1,4</sup>

- Legal Description**  
Part of Lots 15-18, Concession 4 WSCR and Part of Lot 16, Concession 3 WSCR (former geographic Township of Caledon)  
Township of Caledon  
Region of Peel
- Legend**
- Licence Boundary
  - Limit of Extraction
  - Contours with Elevation
  - Public Road
  - Driveway
  - Railway
  - Watercourse
  - Watercourse Intersect
  - Water Feature
  - Wooded Area
  - Wetland
  - Wetland - Other
  - Wetland - MNRF - Unvaluated
  - Additional Land Owned by Licensee
  - 120m Offset From Draft Licence Boundaries
  - Lots and Concessions
  - Parcel Fabric
  - Overhead Hydro
  - Pipeline
  - Fence
  - Entrance / Exit
  - Direction of Surface Drainage
  - Building/Structure
  - Cross Sections

- Legend - Cross Sections**
- Licence Boundary
  - Limit of Extraction
  - Existing Grade
  - Maximum Predicted Water Table
  - Maximum Depth of Excavation
  - Topsoil and/or Overburden
  - Aggregate Available for Extraction

- Site Plan Acronyms**
- ARA - Aggregate Resources Act
  - MECP - Ministry of the Environment, Conservation and Parks
  - MGCS - Ministry of Government and Consumer Services
  - DFO - Department of Fisheries and Oceans Canada
  - MNRF - Ministry of Natural Resources and Forestry
  - TSSA - Technical Standards and Safety Authority
  - MTCSS - Ministry of Tourism, Culture and Sport
  - ECA - Environmental Compliance Approval
  - BMPF - Best Management Practices Plan
  - WWIS - Water Well Information System
  - HIA - Heritage Impact Assessment
  - CVC - Credit Valley Conservancy
  - MASL - Metres above sea level
  - PTTW - Permit to Take Water
  - NTS - Not to Scale

**Site Plan Amendments**

No.	Date	Description	By
1	August 2023	Revised drawing to incorporate updated technical report recommendations	C.P.

**Site Plan Revisions (Pre-Licensing)**

No.	Date	Description	By
-----	------	-------------	----

**MHBC Stamp**

**Brian Zeman**  
Is authorized by the Ministry of Natural Resources and Forestry pursuant to Subsection 0.2(3)(9) of Ontario Regulation 244/97 to prepare and certify site plans.

**Christopher Poole**  
Is authorized by the Ministry of Natural Resources and Forestry pursuant to Subsection 0.2(3)(9) of Ontario Regulation 244/97 to prepare and certify site plans.

**cbm** CBM Aggregates a Division of St. Marys Cement Inc. (Canada)  
55 Industrial Street  
Toronto, Ontario  
M4G 3W9

**VOTORANTIM** Geosystems

**Project**  
**Caledon Pit & Quarry**  
18722 Main Street, Caledon, Ontario

**MNR Licence Reference No.**  
626600

**Applicant's Signature**  
[Signature]

**Plan Scale:** 1:5000 (Arch E)

**Date:** August 2023

**Drawn By:** C.P. **File No.:** 8816AF

**Checked By:** B.Z.

**File Name:** Existing Features

**Drawing No.:** 1 of 4