

**LEGEND:**

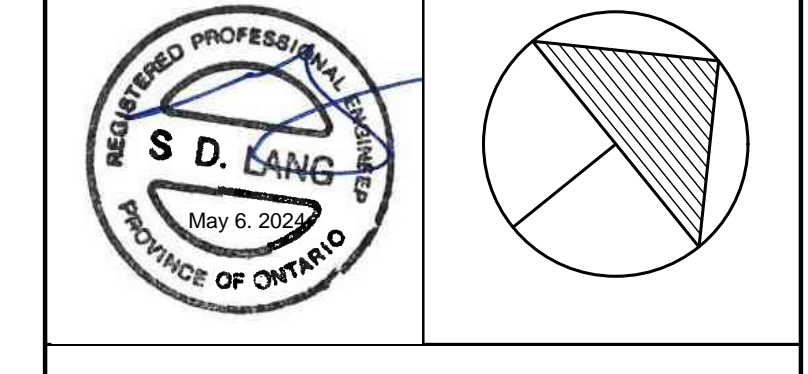
- LIMIT OF SUBDIVISION
- - - - - EXISTING PROPERTY LINE
- PROPOSED STORM MANHOLE
- FUTURE STORM MANHOLE
- PROPOSED SAN MANHOLE
- FUTURE SAN MANHOLE
- - - - - INFILTRATION TRENCH
- EXIST. GRADE
- PROPOSED GRADE

**REFERENCE DRAWINGS:**

- REFER TO DRAFT PLAN PREPARED BY MGP DATED NOVEMBER 28, 2023
- REFER TO DRAWING PS-1 FOR INFORMATION ON STORM, SANITARY & FDC
- REFER TO DRAWING EXT-SA DRAWINGS FOR INFORMATION ON EXTERNAL SANITARY DRAINAGE AREAS.

NO.	DESCRIPTION	DATE	BY
REVISIONS			

**CANDEVCON GROUP INC.**  
CONSULTING ENGINEERS AND PLANNERS  
5000 GOREWAY DRIVE  
BRAMPTON, ON L6P 6P7  
TEL: (905) 764-0000  
FAX: (905) 764-0111



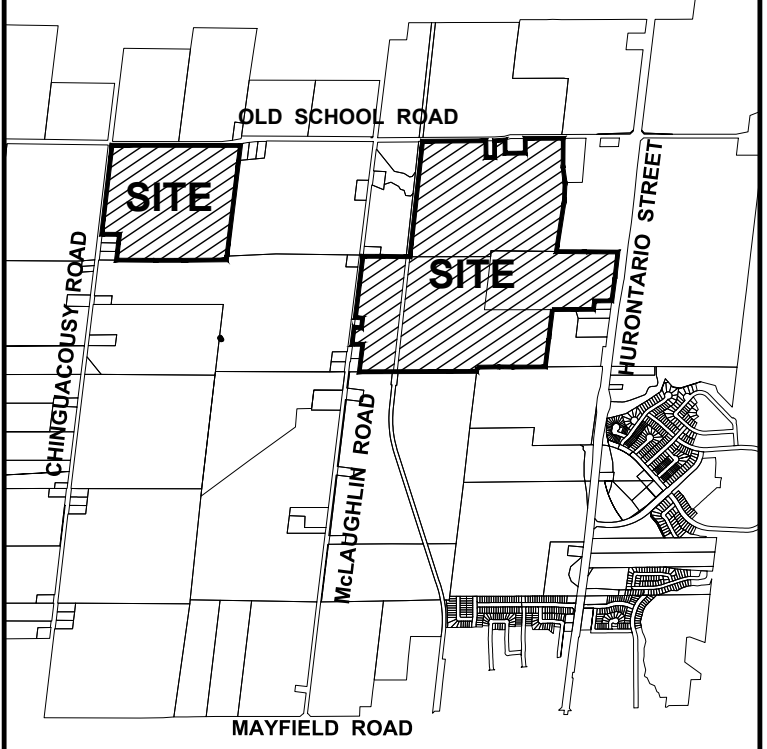
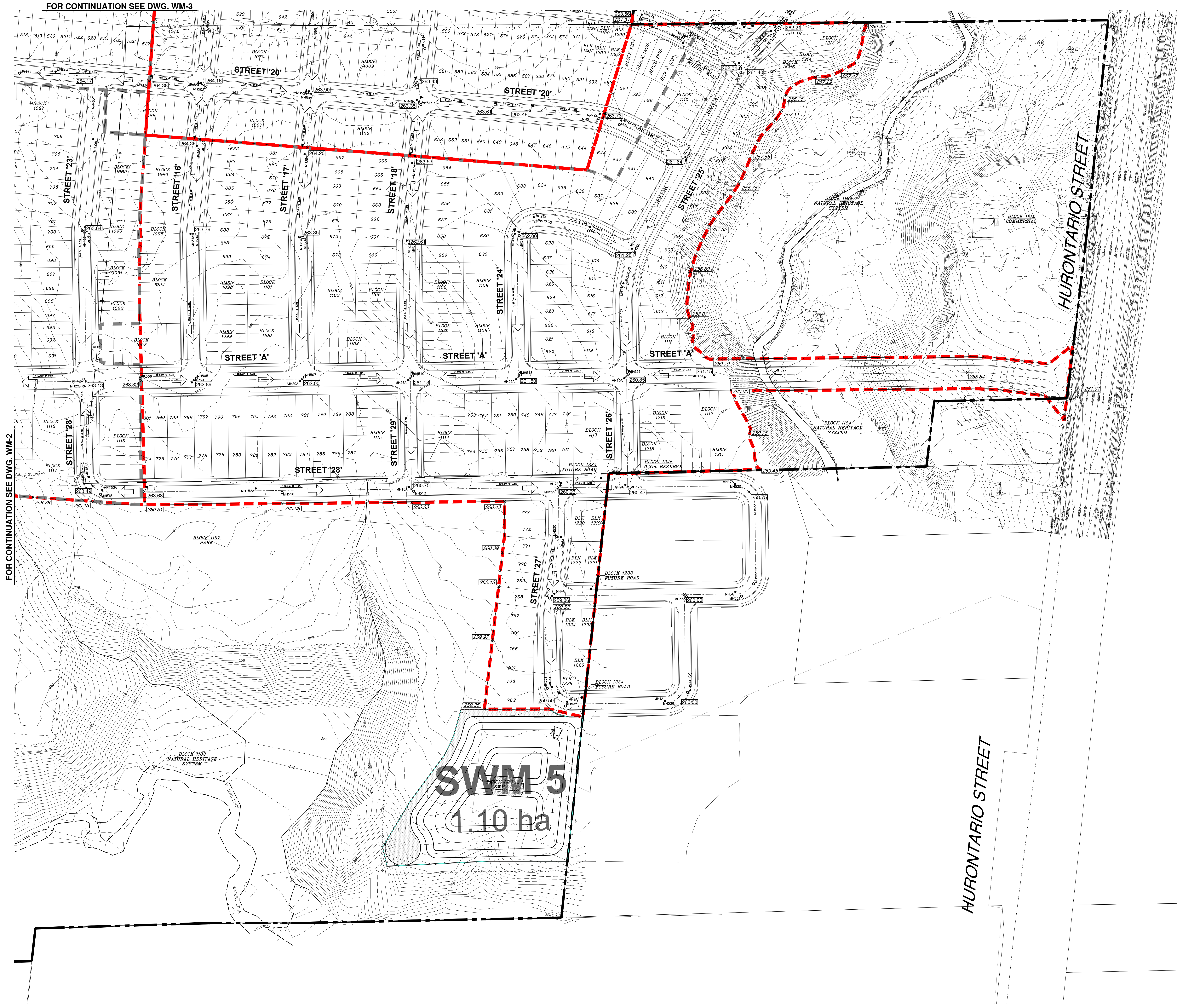
**RESIDENTIAL SUBDIVISION**  
CITY OF BRAMPTON  
REGIONAL MUNICIPALITY OF PEEL

SHEET TITLE:  
**PRELIMINARY GRADING PLAN**

DRAWN BY: S.C.	PROJECT No. W23093
CHECKED BY: S.L.	DRAWING No.
SCALE: 1:1000	<b>PG-1</b>
DATE: FEBRUARY 2024	

J:\CDC-2023 WEST - Files\W23093 - Mayfield West Pkg 1\CDR MASTER DRAWINGS\W23093-PS-1- PRELIMINARY GRADING PLAN.dwg ( May 06, 2024 - 2:57 PM)





**KEY PLAN**

**LEGEND:**

- LIMIT OF SUBDIVISION
- - - - - EXISTING PROPERTY LINE
- PROPOSED STORM MANHOLE
- FUTURE STORM MANHOLE
- PROPOSED SAN MANHOLE
- FUTURE SAN MANHOLE
- - - - - INFILTRATION TRENCH
- 204.39 EXIST. GRADE
- 204.39 PROPOSED GRADE

EXISTING RESIDENTIAL

- REFERENCE DRAWINGS:**
- REFER TO DRAFT PLAN PREPARED BY MGP DATED NOVEMBER 28, 2023
  - REFER TO DRAWING PS-1 FOR INFORMATION ON STORM, SANITARY & FDC
  - REFER TO DRAWING EXT-SA DRAWINGS FOR INFORMATION ON EXTERNAL SANITARY DRAINAGE AREAS.

NO.	DESCRIPTION	DATE	BY

**REVISIONS**

**CANDEVCON GROUP INC.**  
CONSULTING ENGINEERS AND PLANNERS  
5050 GOREWAY DRIVE TEL: (905) 764-0000  
BRAMPTON, ON L6P 6P7 FAX: (905) 764-0011

**S. D. LANG**  
REGISTERED PROFESSIONAL ENGINEER  
MAY 6, 2024  
PROVINCE OF ONTARIO

**RESIDENTIAL SUBDIVISION**  
CITY OF BRAMPTON  
REGIONAL MUNICIPALITY OF PEEL

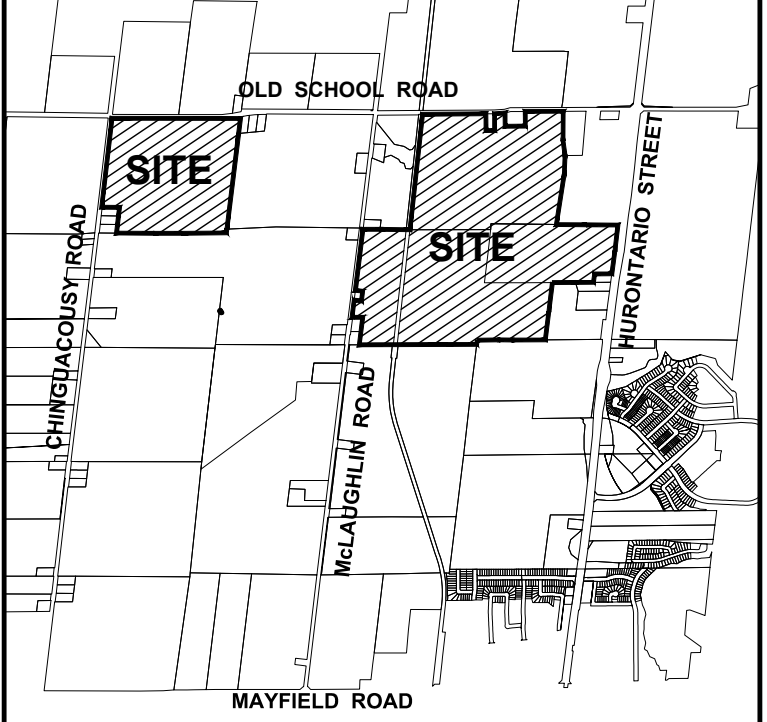
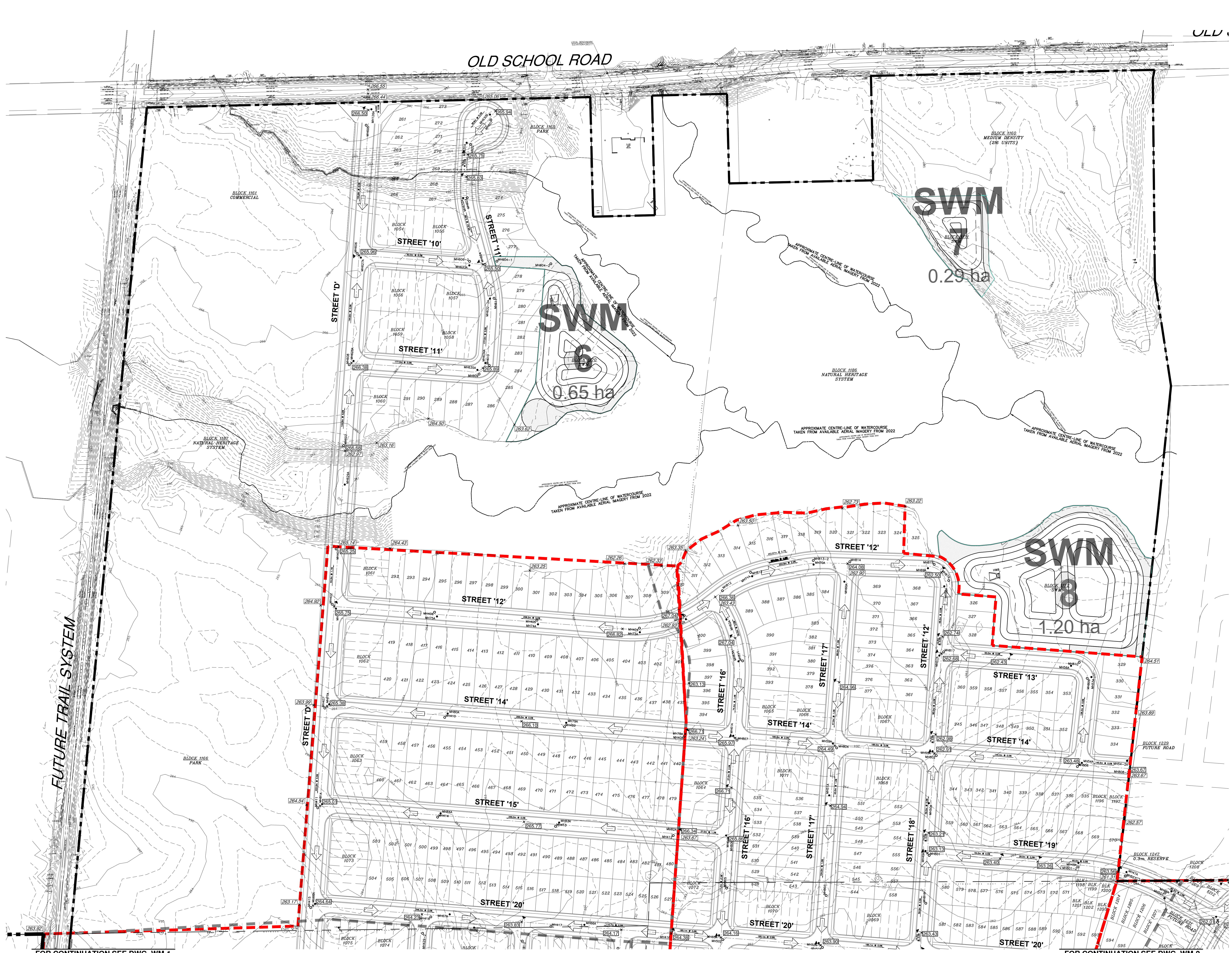
**PRELIMINARY GRADING PLAN**

DRAWN BY:	S.C.	PROJECT No.	W23093
CHECKED BY:	S.L.	DRAWING No.	
SCALE:	1:1000	DATE:	FEBRUARY 2024

**PG-2**

J:\CDC-2023 WEST - Files\W23093 - Files\W23093 - Mayfield West Proj. STV\SR MASTER DRAWINGS\W23093-PS-1- PRELIMINARY GRADING PLAN.dwg ( May 06, 2024 - 2:55pm)



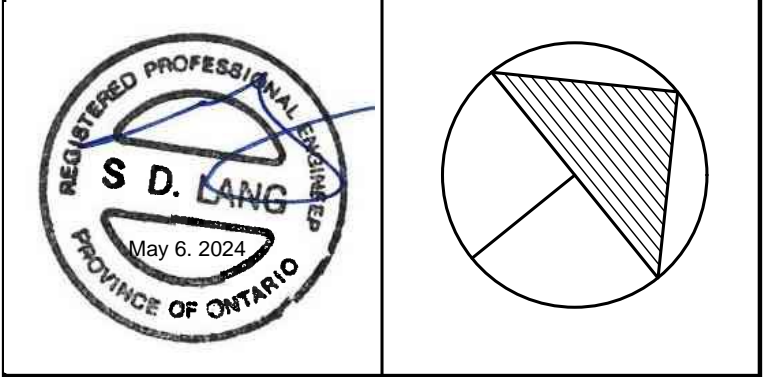


- LEGEND:**
- LIMIT OF SUBDIVISION
  - - - - - EXISTING PROPERTY LINE
  - PROPOSED STORM MANHOLE
  - FUTURE STORM MANHOLE
  - PROPOSED SAN MANHOLE
  - FUTURE SAN MANHOLE
  - - - - - INFILTRATION TRENCH
  - 264.39 EXIST. GRADE
  - 264.38 PROPOSED GRADE

- REFERENCE DRAWINGS:**
1. REFER TO DRAFT PLAN PREPARED BY MGP DATED NOVEMBER 28, 2023
  2. REFER TO DRAWING PS-1 FOR INFORMATION ON STORM, SANITARY & FDC
  3. REFER TO DRAWING EXT-SA DRAWINGS FOR INFORMATION ON EXTERNAL SANITARY DRAINAGE AREAS.

NO.	DESCRIPTION	DATE	BY
REVISIONS			

**CANDEVCON GROUP INC.**  
 CONSULTING ENGINEERS AND PLANNERS  
 5828 GREYWAY DRIVE  
 BRAMPTON, ON L6P 6P7  
 TEL: (905) 764-0200  
 FAX: (905) 764-0811



**RESIDENTIAL SUBDIVISION**  
 CITY OF BRAMPTON  
 REGIONAL MUNICIPALITY OF PEEL

**PRELIMINARY GRADING PLAN**

DRAWN BY: S.C.	PROJECT No: W23093
CHECKED BY: S.L.	DRAWING No: PG-3
SCALE: 1:1000	DATE: FEBRUARY 2024

FOR CONTINUATION SEE DWG. WM-1

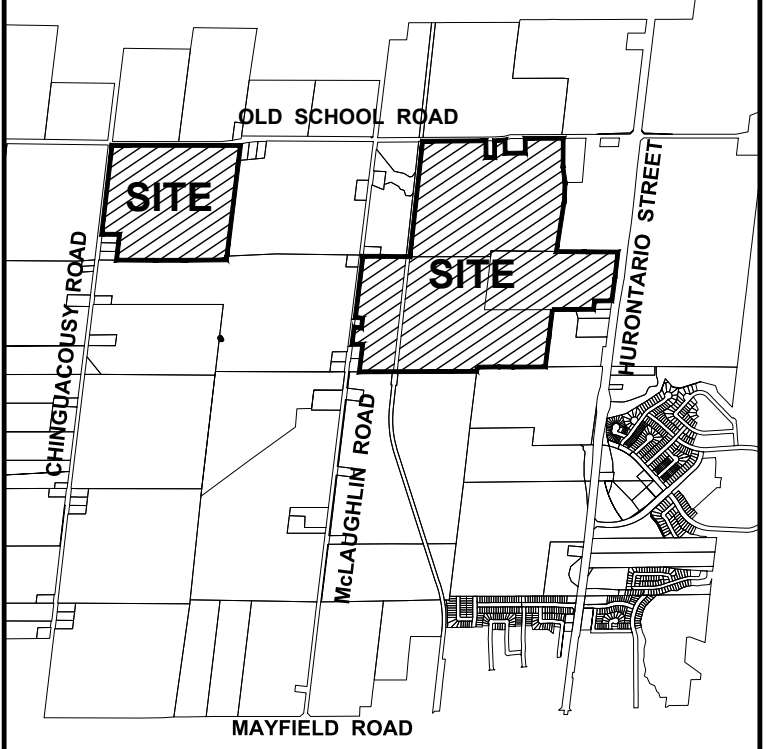
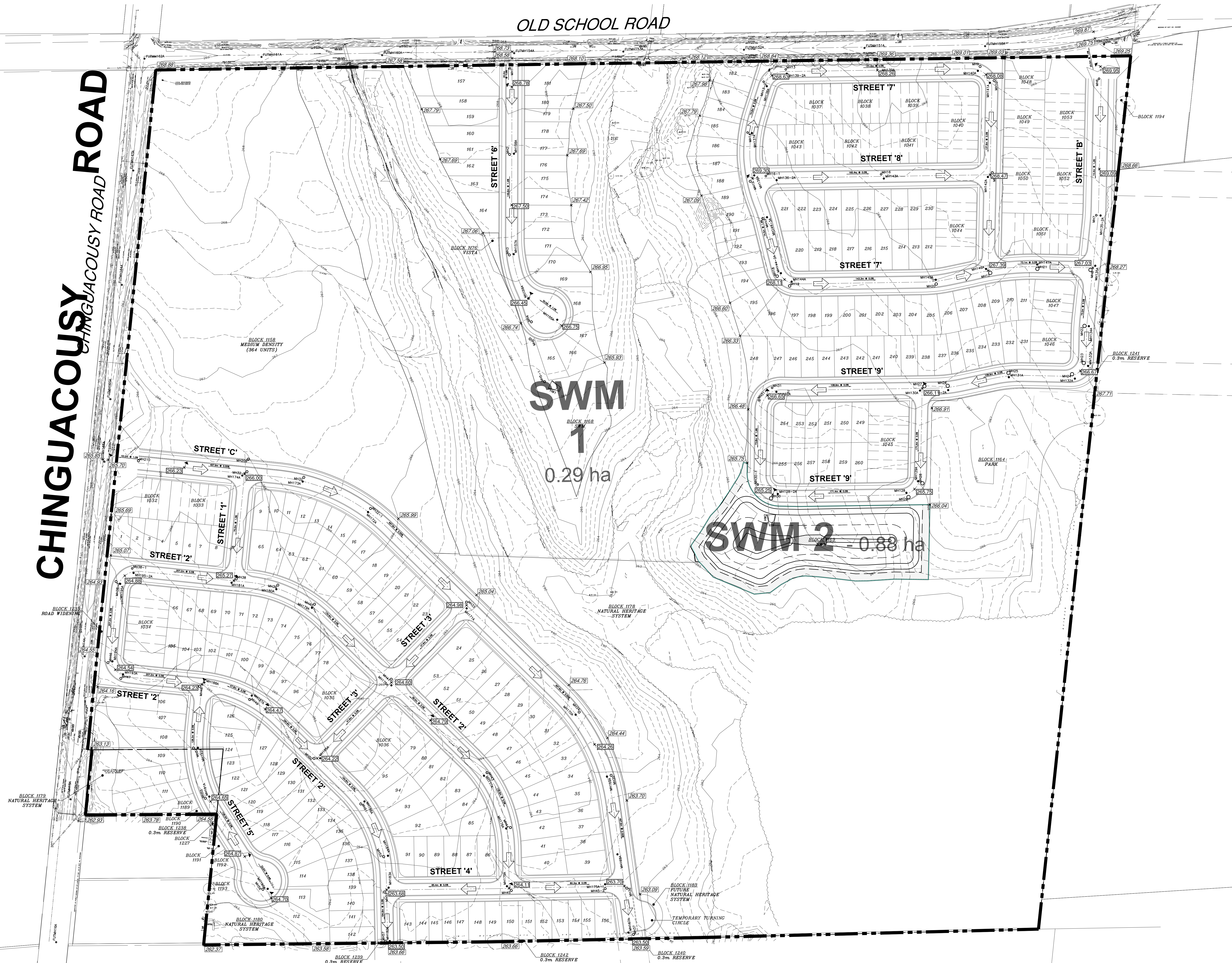
FOR CONTINUATION SEE DWG. WM-2

J:\CDC-2023-WEST - Files\W23093 - Mayfield West\STV\SR\MASTER DRAWINGS\W23093-PS-1-PRELIMINARY GRADING PLAN.dwg ( May 06, 2024 - 2:58pm)



# CHINGUACOUSY ROAD

## OLD SCHOOL ROAD



### KEY PLAN

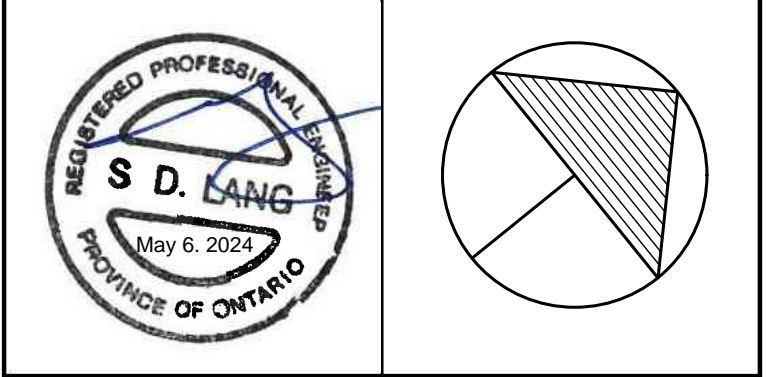
- LEGEND:**
- LIMIT OF SUBDIVISION
  - - - - - EXISTING PROPERTY LINE
  - PROPOSED STORM MANHOLE
  - FUTURE STORM MANHOLE
  - PROPOSED SAN MANHOLE
  - FUTURE SAN MANHOLE
  - - - - - INFILTRATION TRENCH
  - 204.39 EXIST. GRADE
  - 204.39 PROPOSED GRADE

- REFERENCE DRAWINGS:**
1. REFER TO DRAFT PLAN PREPARED BY MGP DATED NOVEMBER 28, 2023
  2. REFER TO DRAWING PS-1 FOR INFORMATION ON STORM, SANITARY & TCO
  3. REFER TO DRAWING EXT-SA DRAWINGS FOR INFORMATION ON EXTERNAL SANITARY DRAINAGE AREAS.

NO.	DESCRIPTION	DATE	BY

**REVISIONS**

**CANDEVCON GROUP INC.**  
CONSULTING ENGINEERS AND PLANNERS  
5000 GOREWAY DRIVE  
BRAMPTON, ON L6P 6P7  
TEL: (905) 764-0000  
FAX: (905) 764-0011



**RESIDENTIAL SUBDIVISION**  
CITY OF BRAMPTON  
REGIONAL MUNICIPALITY OF PEEL

**PRELIMINARY GRADING PLAN**

DRAWN BY: S.C.	PROJECT No. W23093
CHECKED BY: S.L.	DRAWING No.
SCALE: 1:1000	<b>PG-4</b>
DATE: FEBRUARY 2024	

J:\CDC-2023 WEST - Files\W23093 - Mayfield West Proj. STV\SR MASTER DRAWINGS\W23093-PS-1- PRELIMINARY GRADING PLAN.dwg ( May 06, 2024 - 2:55pm)