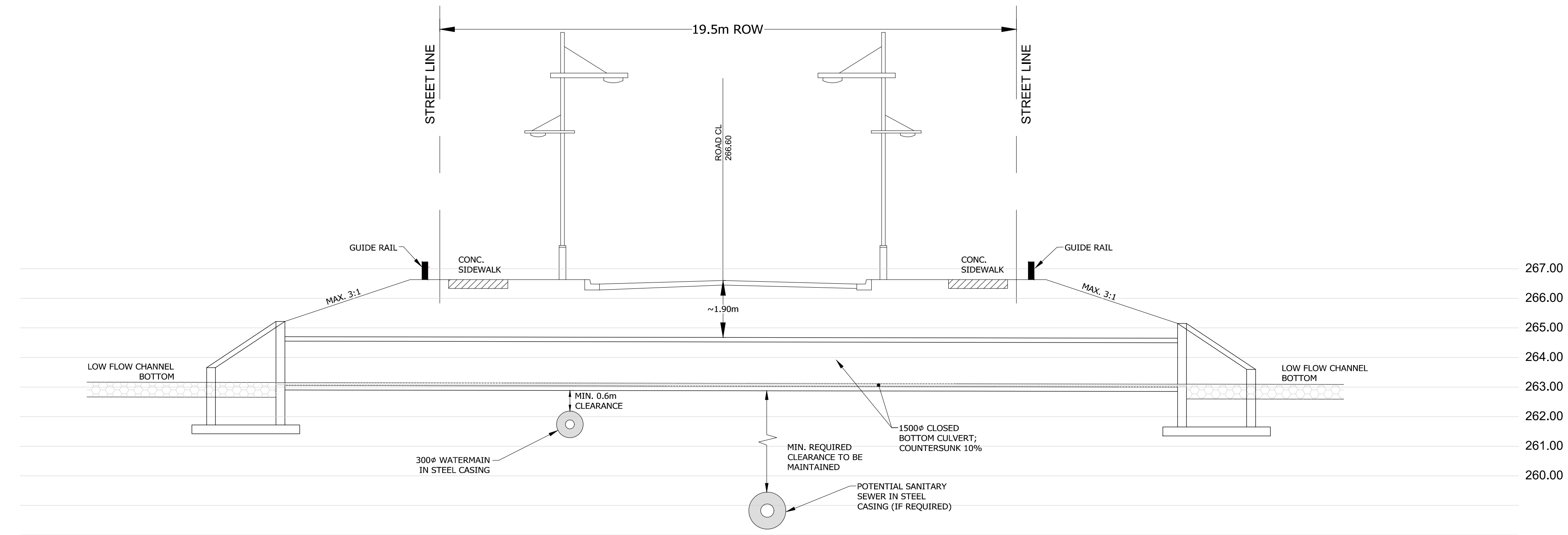
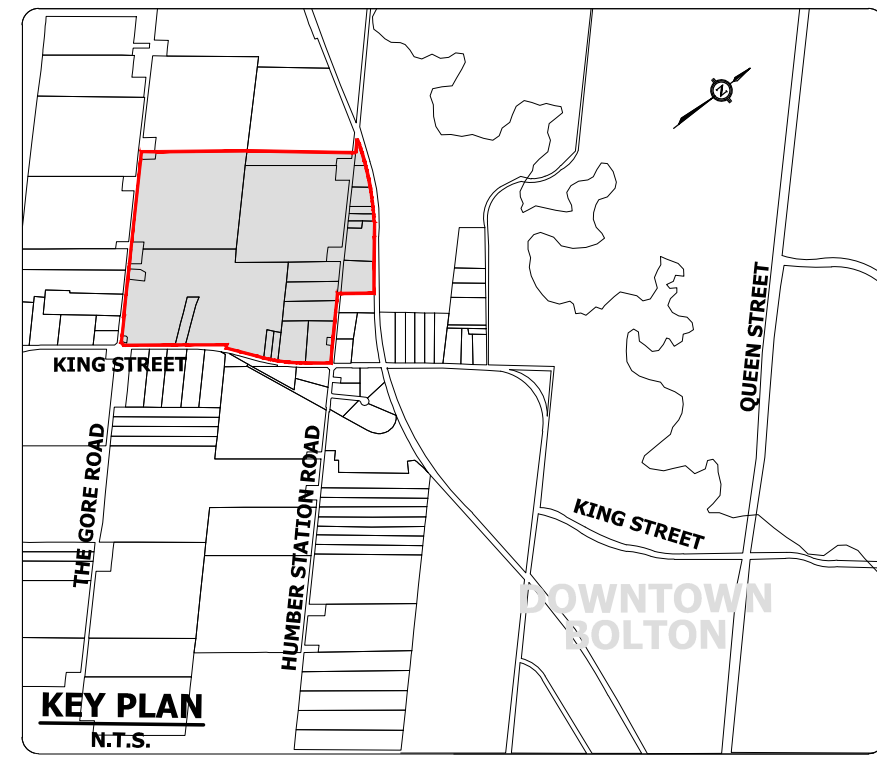


**PLAN VIEW
1:500**



**SECTION A-A
SCALE 1:100**



NOTES:

- * CLOSED BOTTOM CULVERTS TO BE IMPLEMENTED AT ROAD CROSSINGS.
- * WATERMAIN TO BE PRE-INSTALLED UNDERNEATH CLOSE BOTTOM CULVERT AND ENCASED IN STEEL LINER.
- * SANITARY SEWER IS NOT ANTICIPATED BELOW THE PROPOSED ROAD CROSSINGS; HOWEVER, IF DETERMINED OTHERWISE AT DETAIL DESIGN, THE SANITARY SEWER WILL BE PRE-INSTALLED UNDERNEATH THE CULVERT WITH A MINIMUM CLEARANCE REQUIRED BY THE REGION AND TRCA.
- * CROSSING TREATMENT (HEADWALL, WINGWALLS, AND PROTECTIVE/SAFETY FENCING) TO BE DETERMINED AND APPROVED AT DETAIL DESIGN STAGE.



**TOWN OF CALEDON
REGIONAL MUNICIPALITY OF PEEL
MACVILLE SECONDARY PLAN
(BRES OPTION 3 LANDS)**

**TYPICAL ROAD CROSSING
DETAILS**

SURVEYED BY:	J.D.B.	DATE:	2020	JOB NO.	15-458
DRAWN BY:	V.P.	CHECKED BY:	D.Z.	DRAWING NO.	SHEET NO.
DESIGNED BY:	D.Z.	CHECKED BY:	D.Z.	402	
SCALE:	AS SHOWN	DATE:	JAN. 2021		