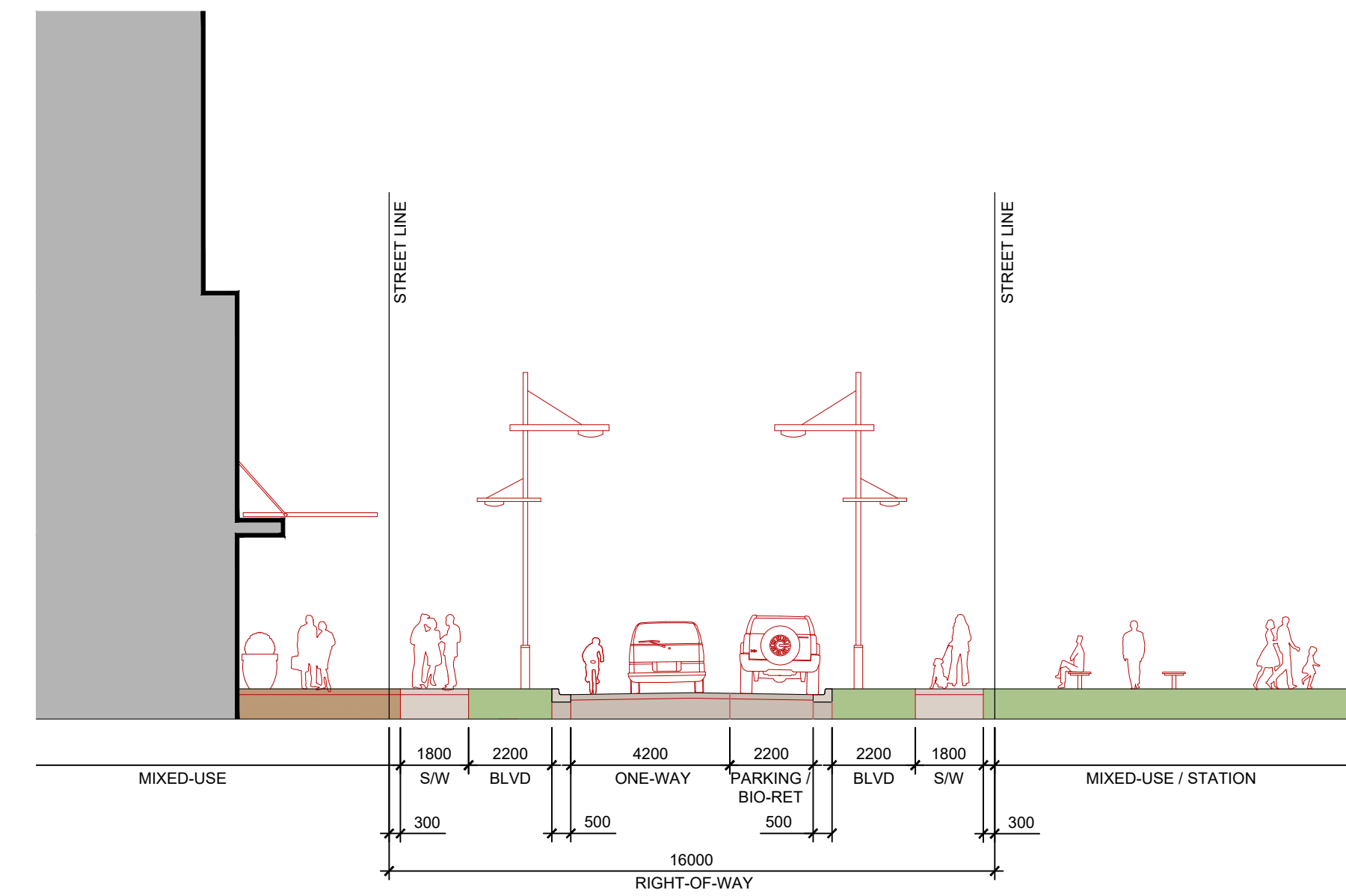
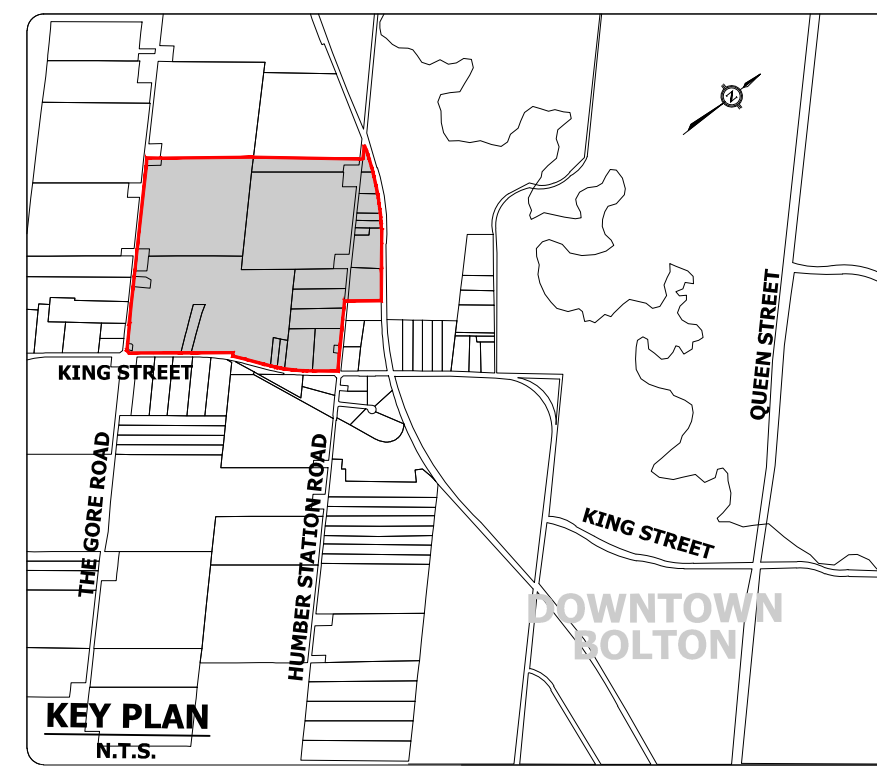
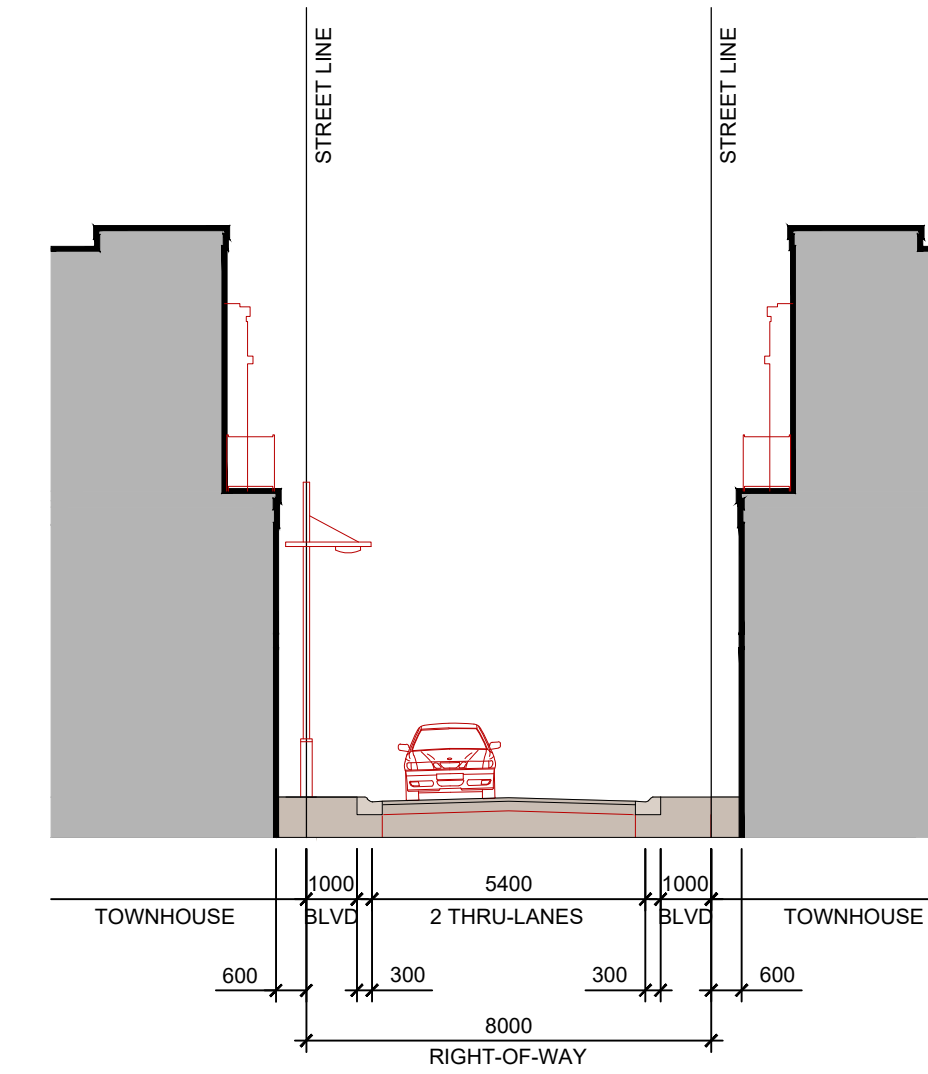
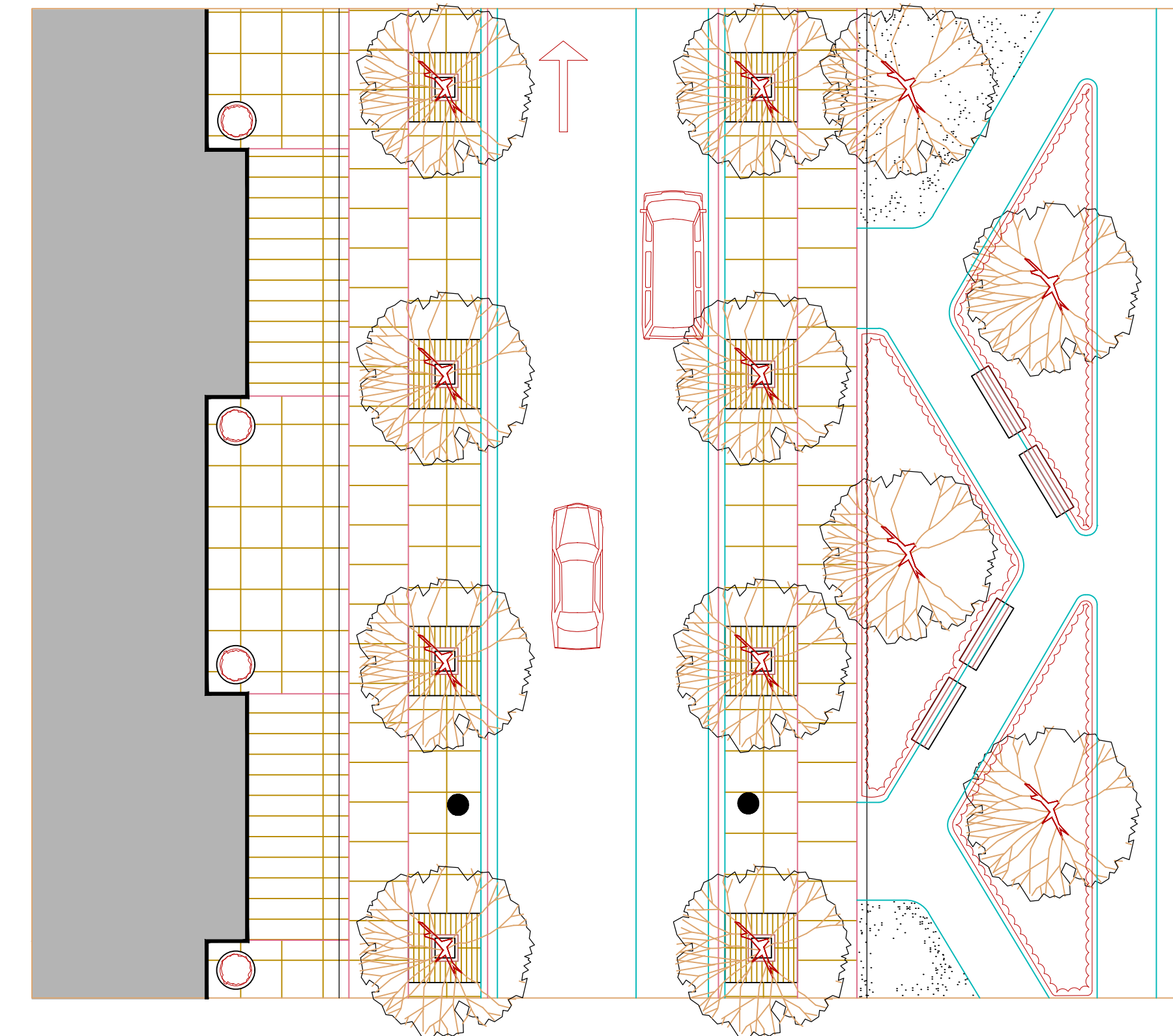


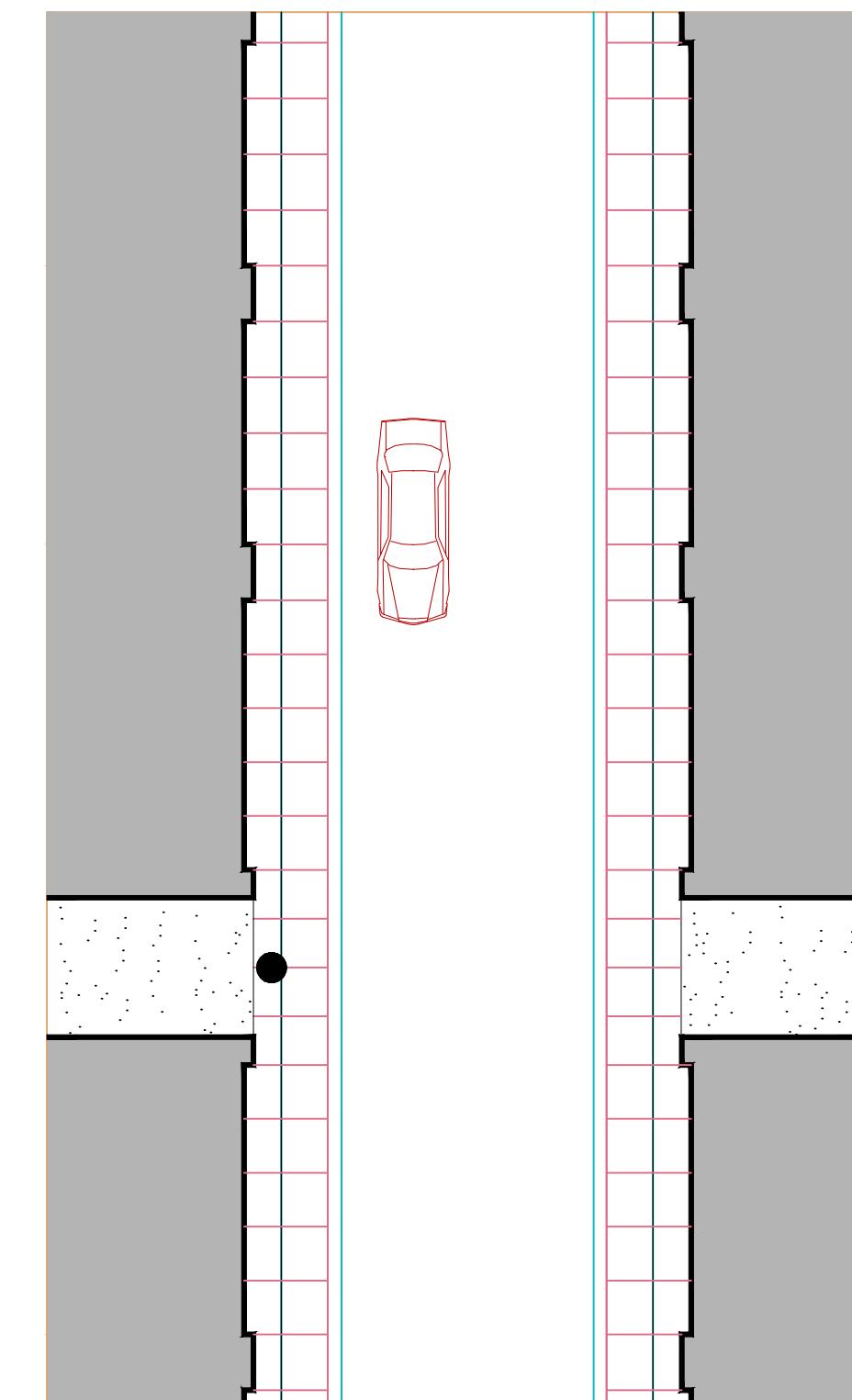
MACVILLE COMMUNITY/Local Road and Laneway



LOCAL ROAD (STATION HUB - ONE WAY) - 16.0m R.O.W.



LANEWAY - 8.0m R.O.W.



URBANTECH
URBANTECH® Consulting
A Division of Leighton-Zac Ltd.
3760 14th Avenue, Suite 301,
Markham, ON L3R 3T7
TEL 905.946.9461 • urbantech.com

**TOWN OF CALEDON
REGIONAL MUNICIPALITY OF PEEL
MACVILLE SECONDARY PLAN
(BRES OPTION 3 LANDS)**

**PRELIMINARY
ROW CROSS SECTIONS
(16.0m AND 8.0m)**

SURVEYED BY:	J.D.B.	DATE:	2020	JOB NO.	15-458
DRAWN BY:	V.P.	CHECKED BY:	D.Z.	DRAWING NO.	SHEET NO.
DESIGNED BY:	D.Z.	CHECKED BY:	D.Z.		
SCALE:	NTS	DATE:	JAN. 2021		311

NAK
design strategies