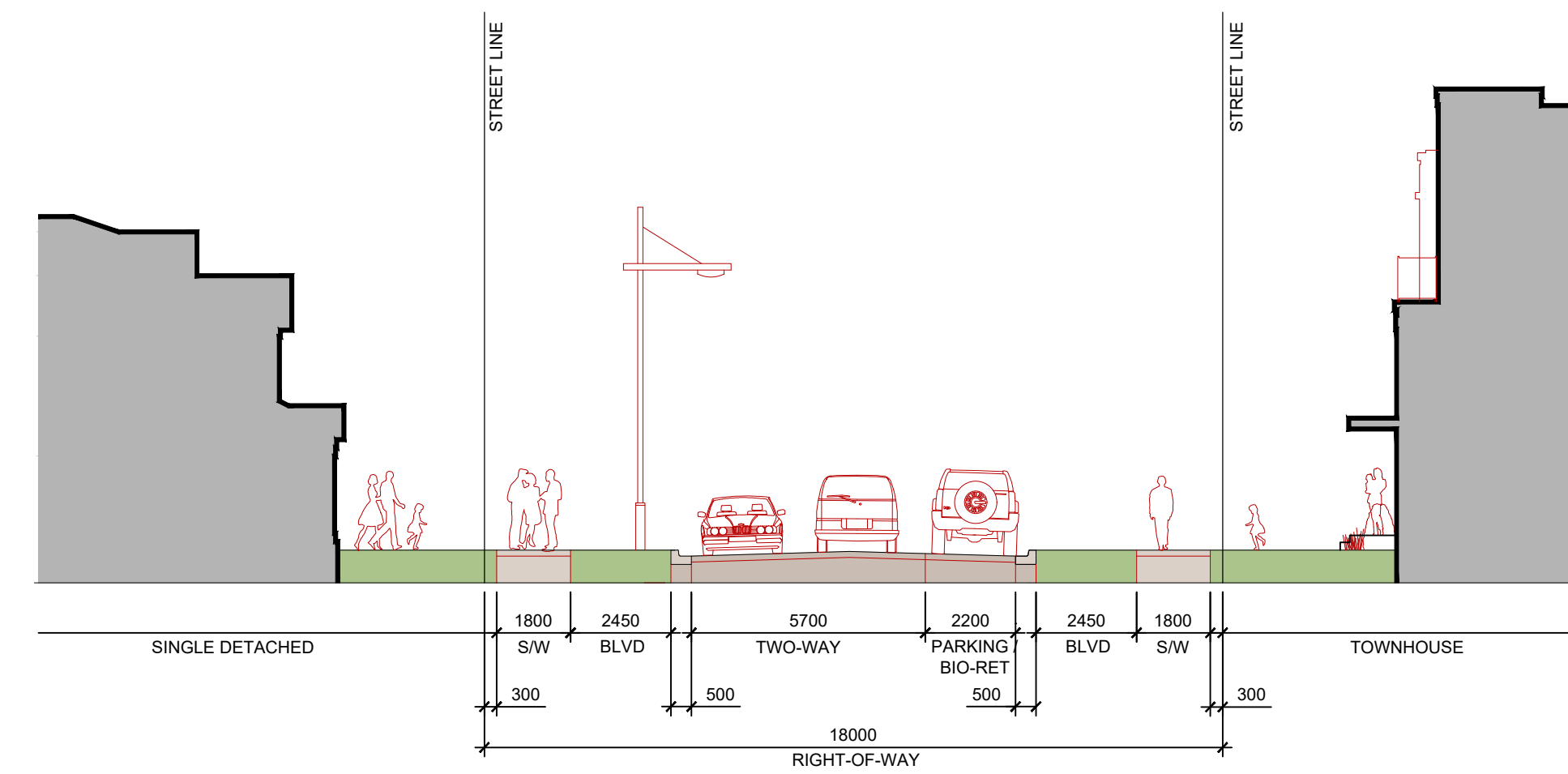
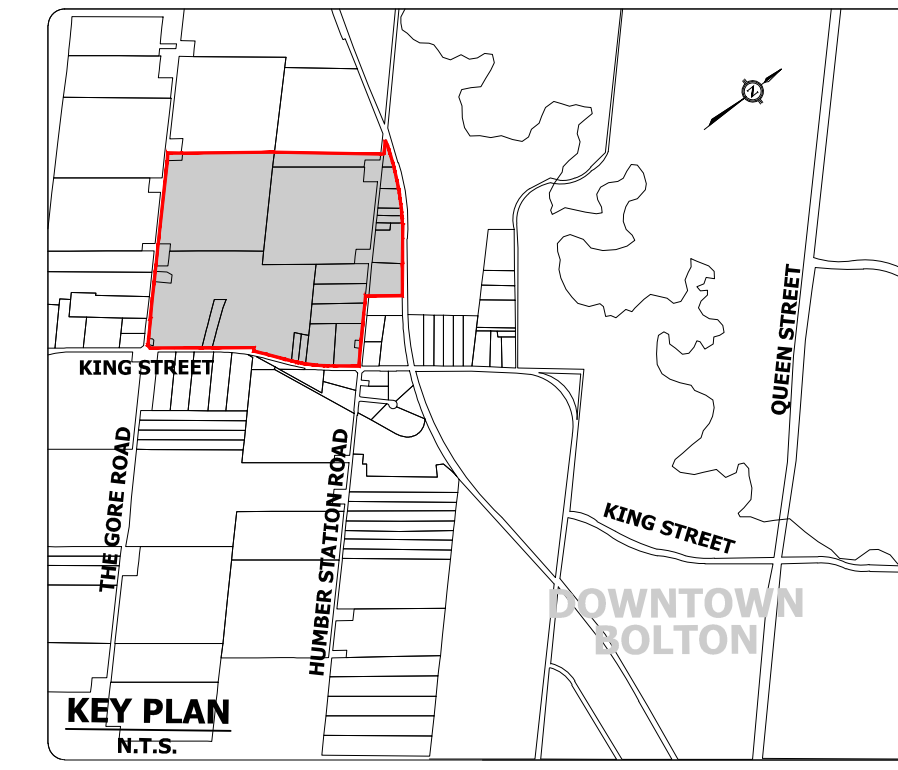
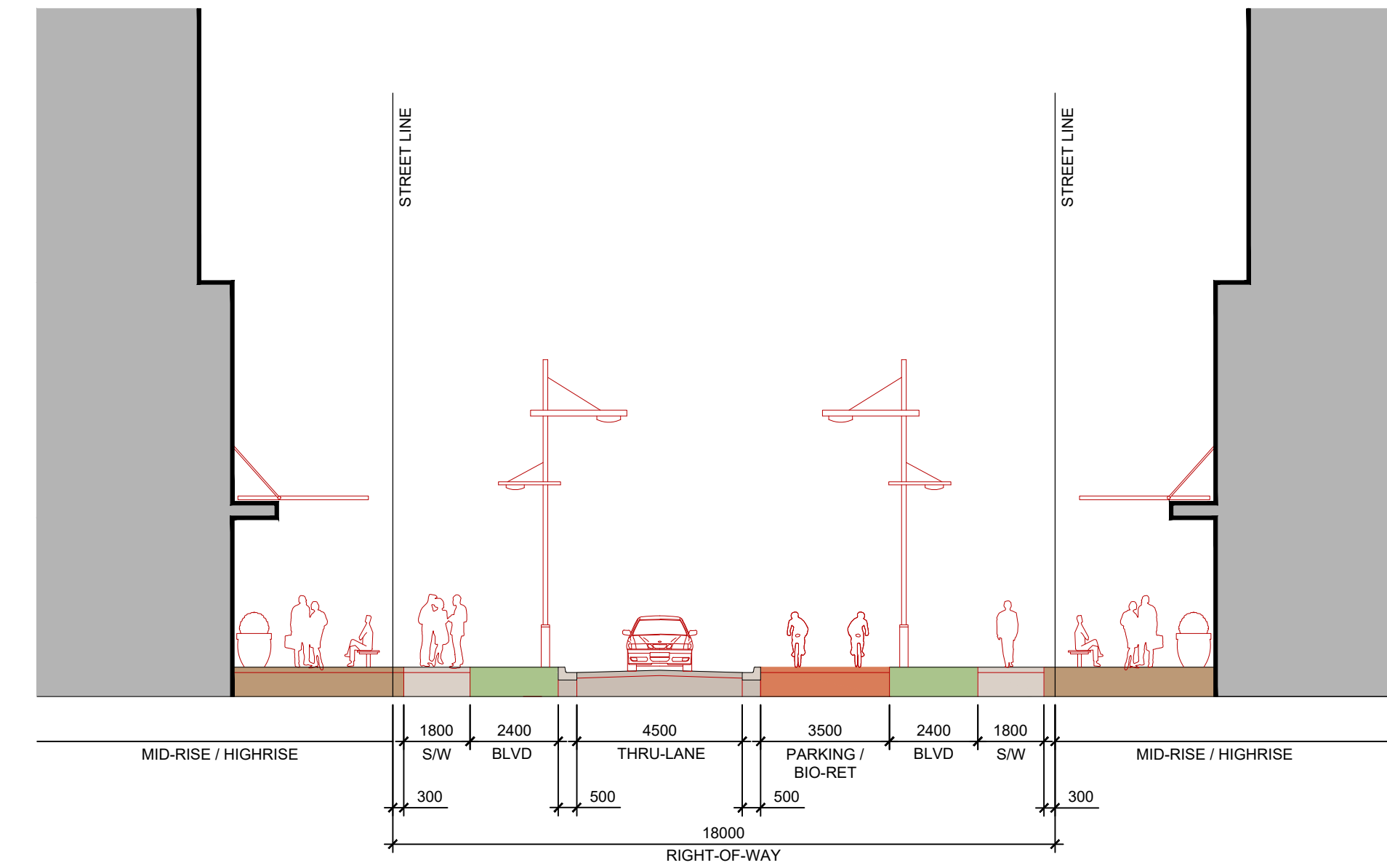
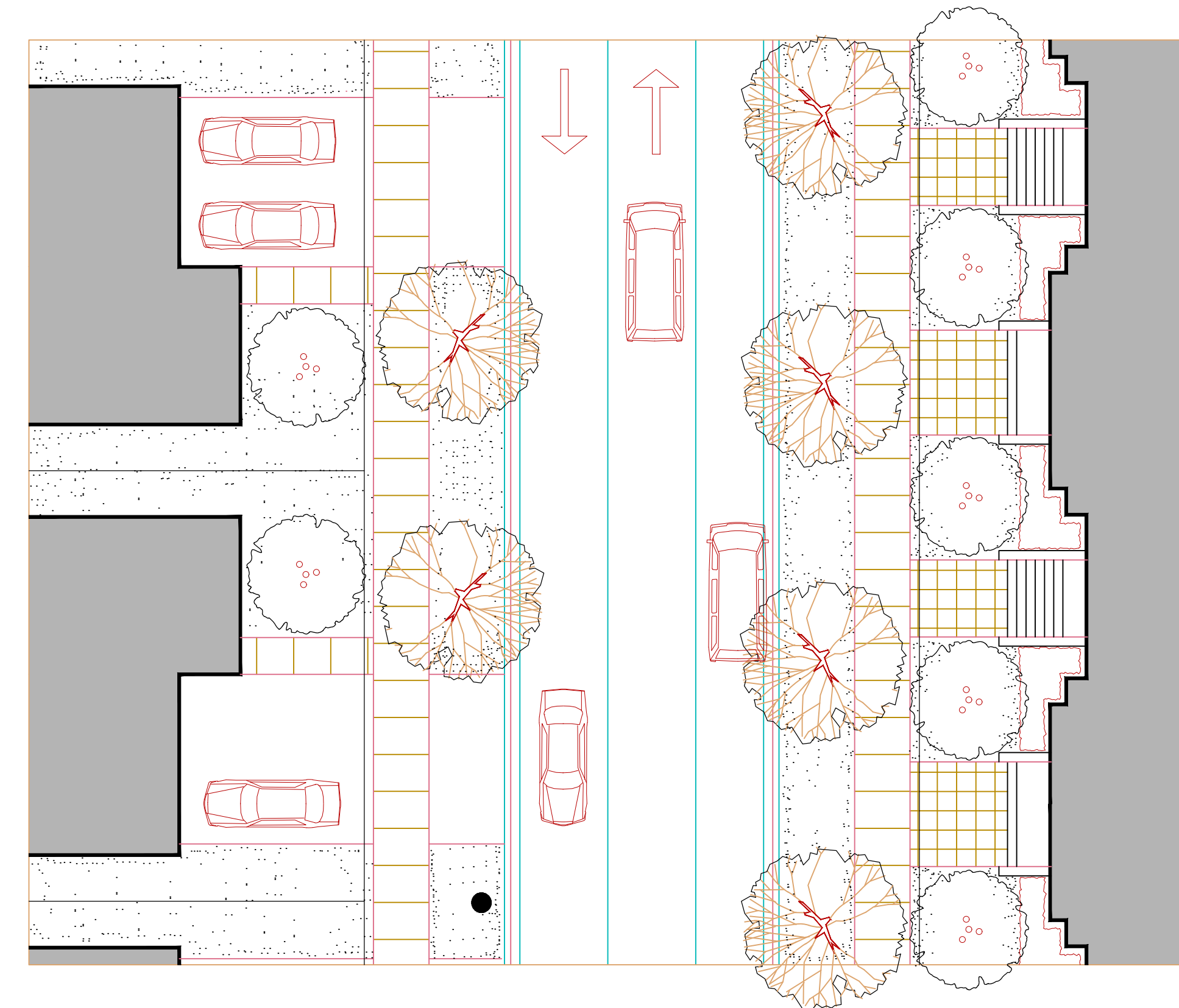


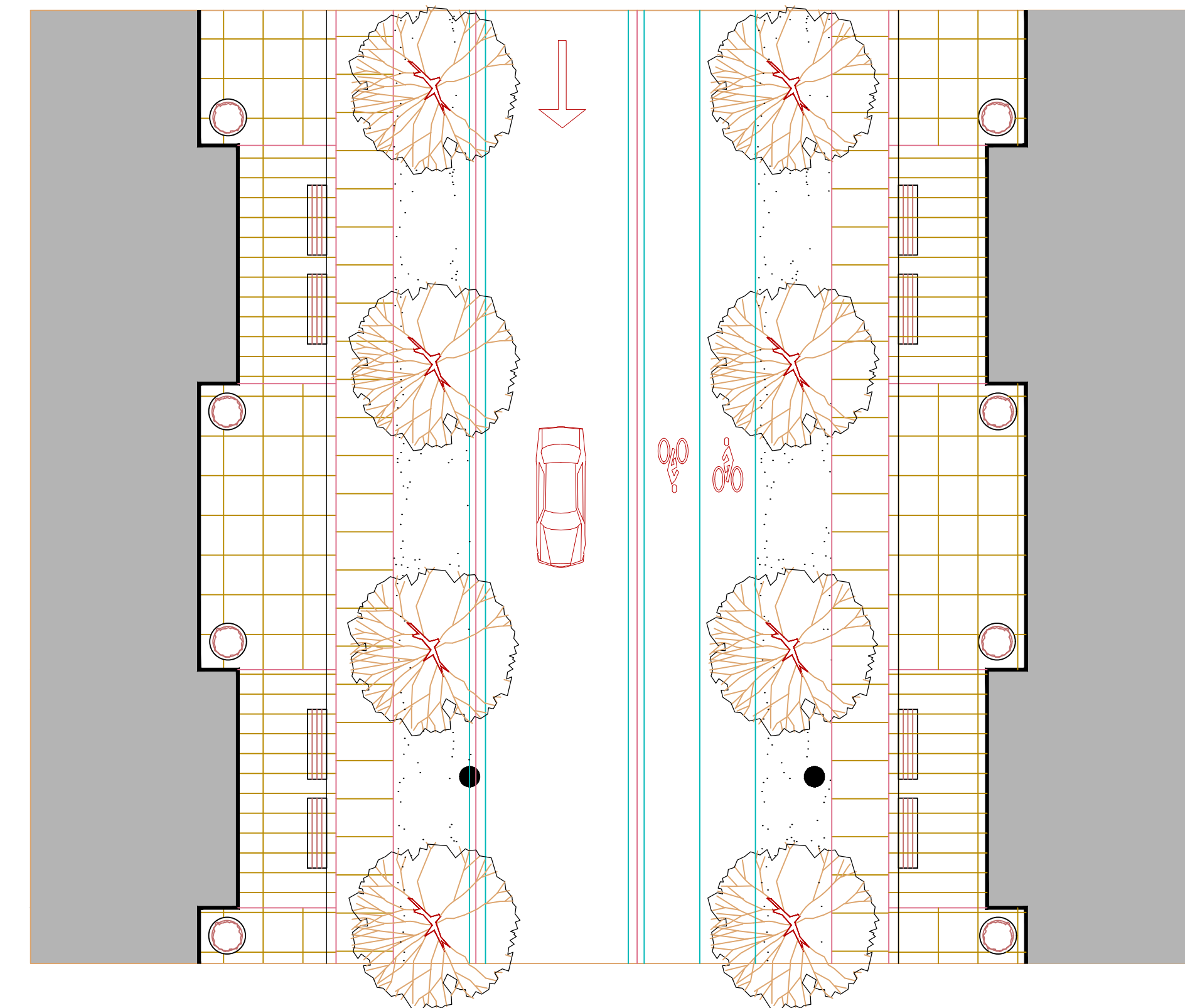
MACVILLE COMMUNITY/Local Road



LOCAL ROAD - 18.0m R.O.W.



ONE-WAY W/ CYCLE TRACK - 18.0m R.O.W.



**TOWN OF CALEDON
REGIONAL MUNICIPALITY OF PEEL
MACVILLE SECONDARY PLAN
(BRES OPTION 3 LANDS)**

**PRELIMINARY
ROW CROSS SECTIONS
(18.0m)**

SURVEYED BY:	J.D.B.	DATE:	2020	JOB NO.	15-458
DRAWN BY:	V.P.	CHECKED BY:	D.Z.	DRAWING NO.	SHEET NO.
DESIGNED BY:	D.Z.	CHECKED BY:	D.Z.		
SCALE:	NTS	DATE:	JAN. 2021		310