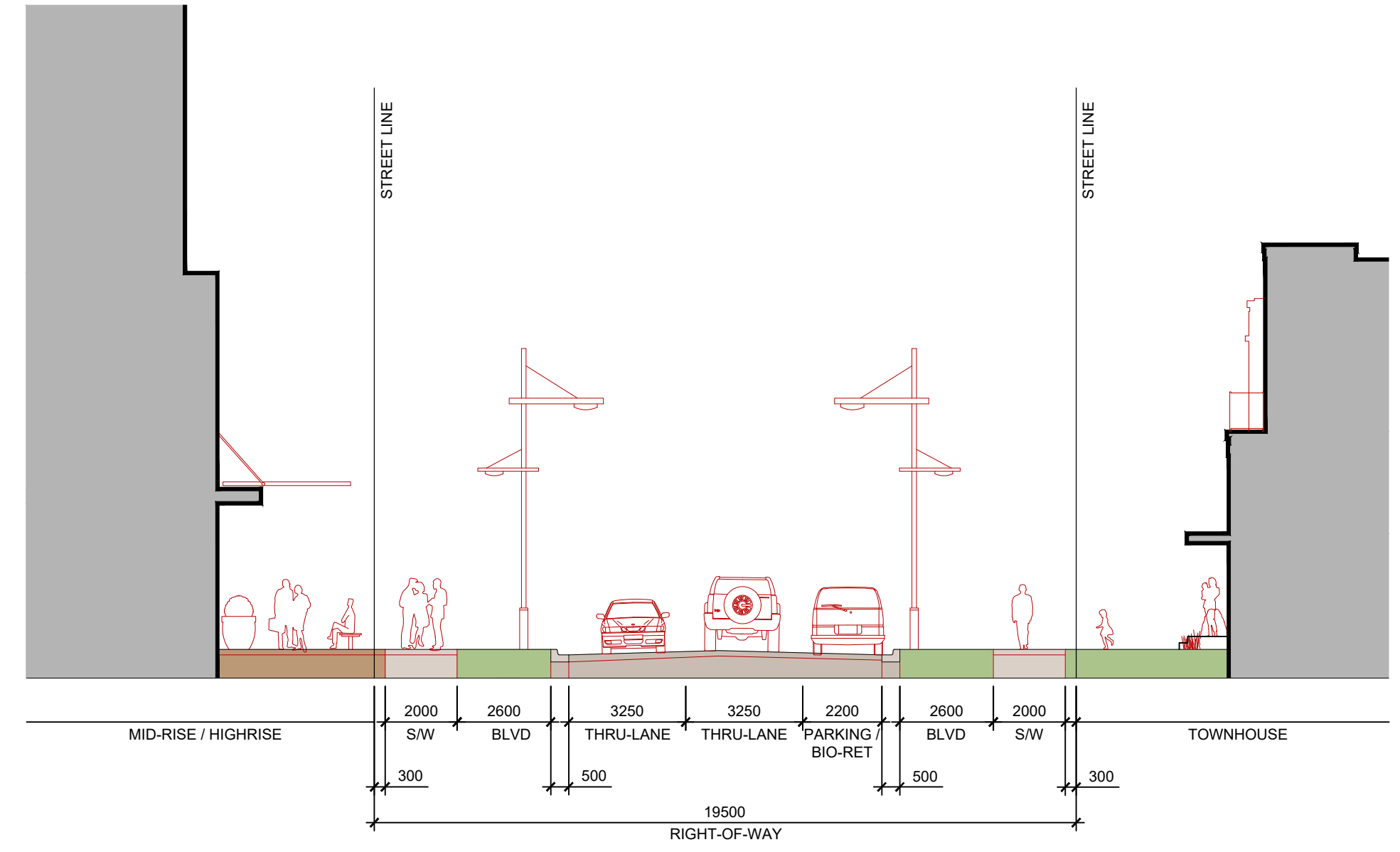
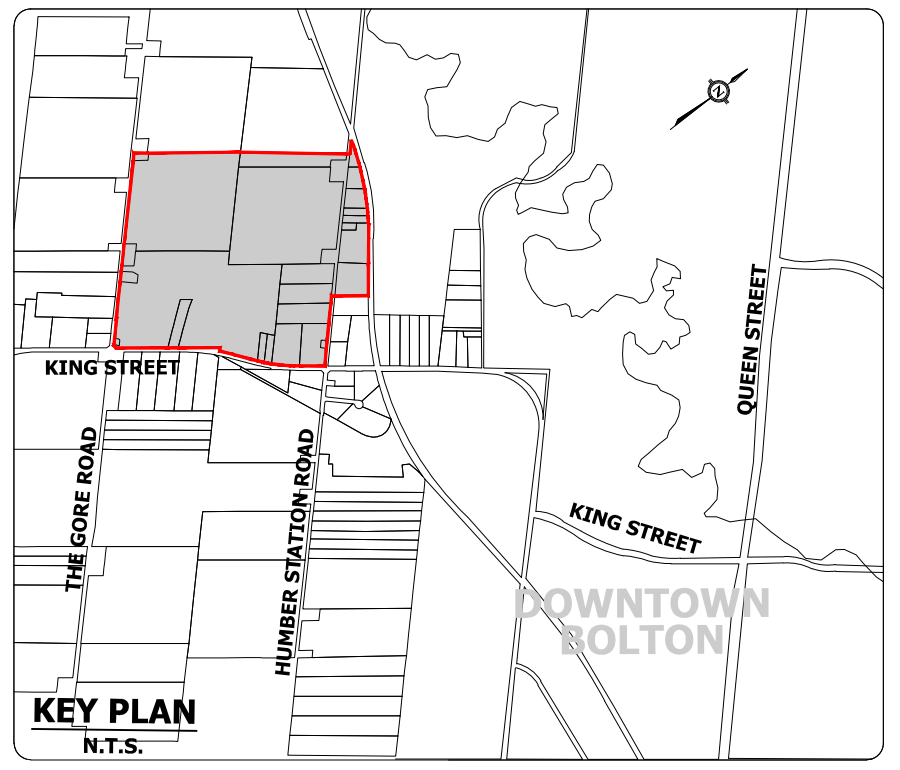
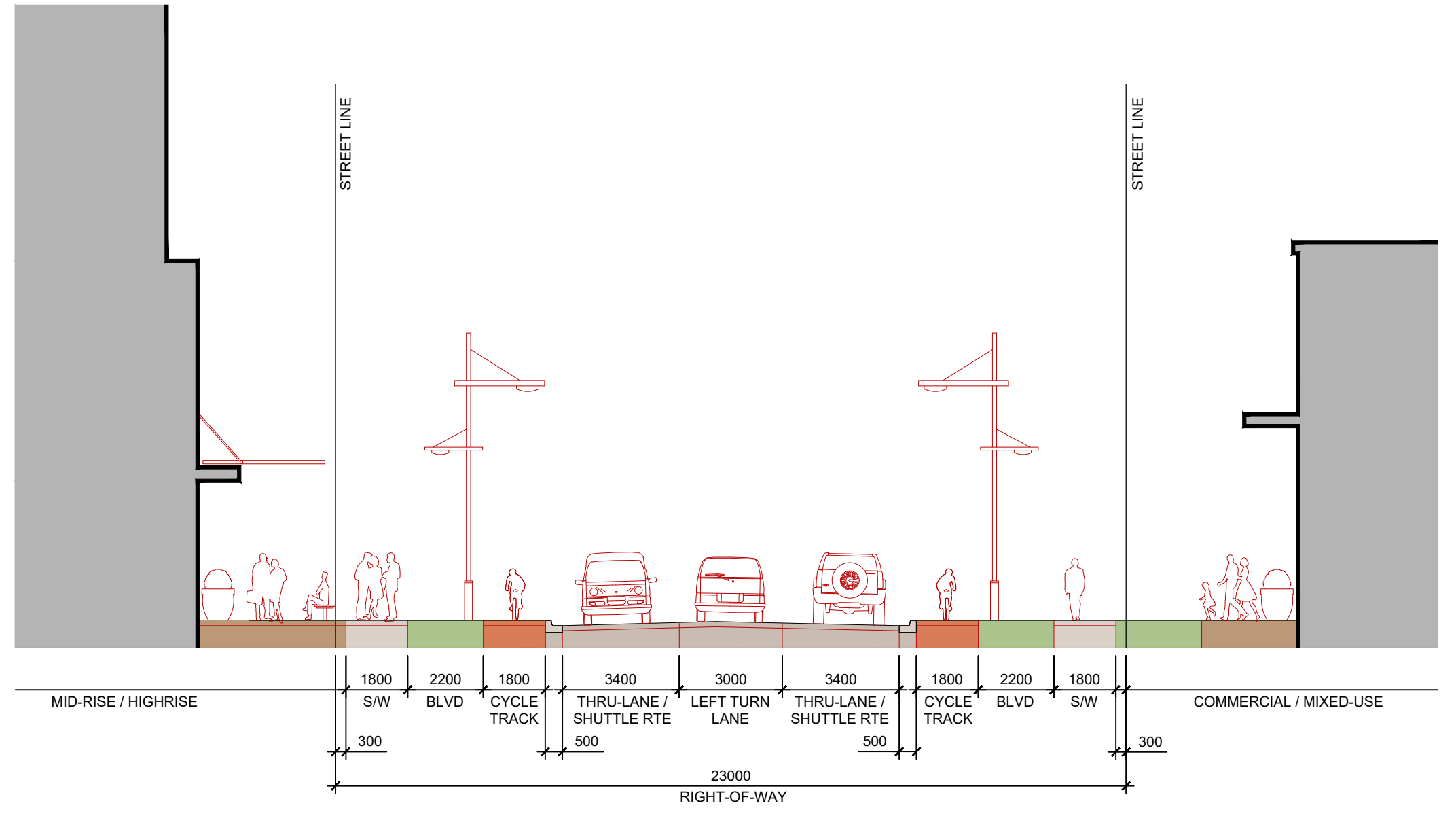
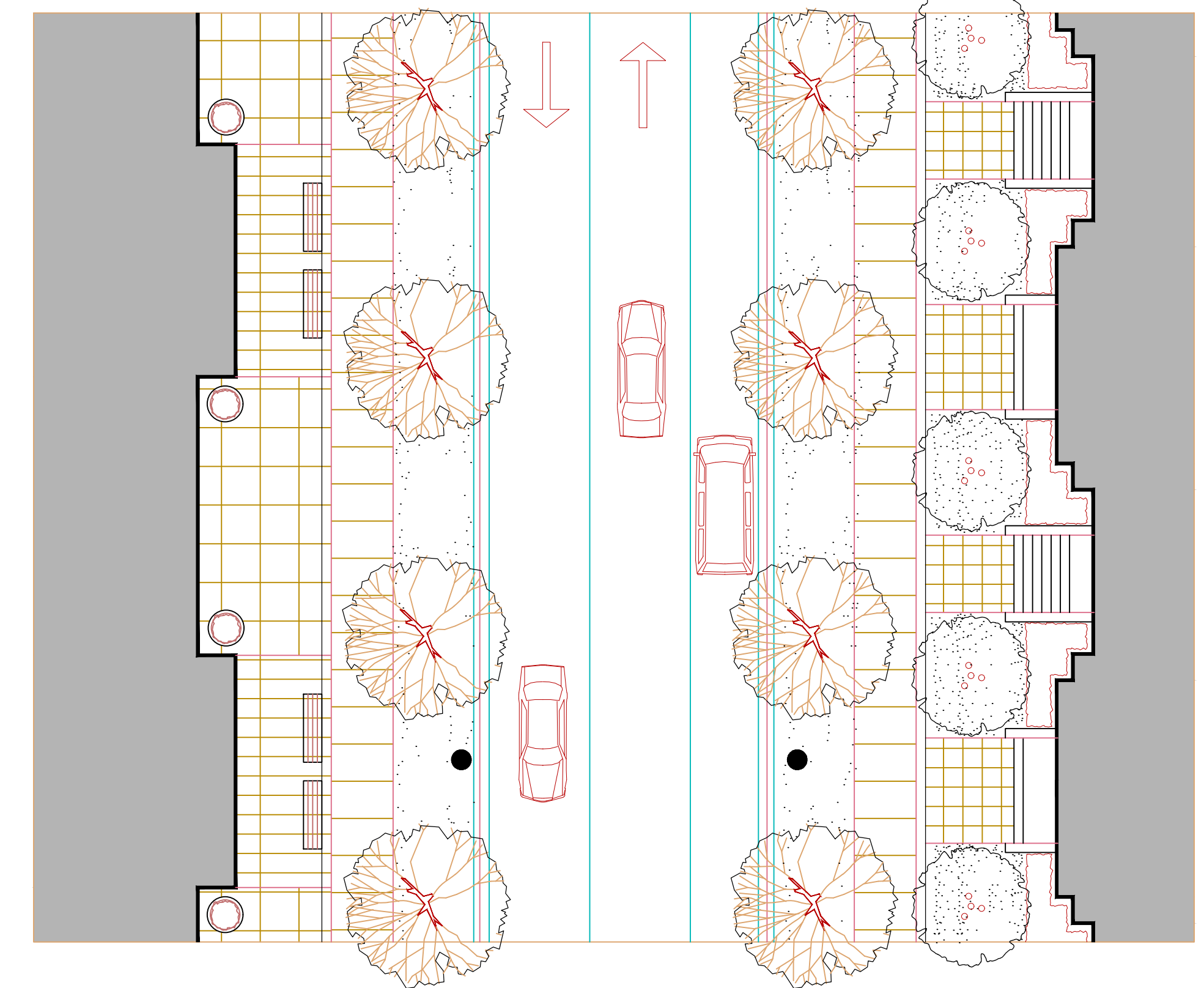


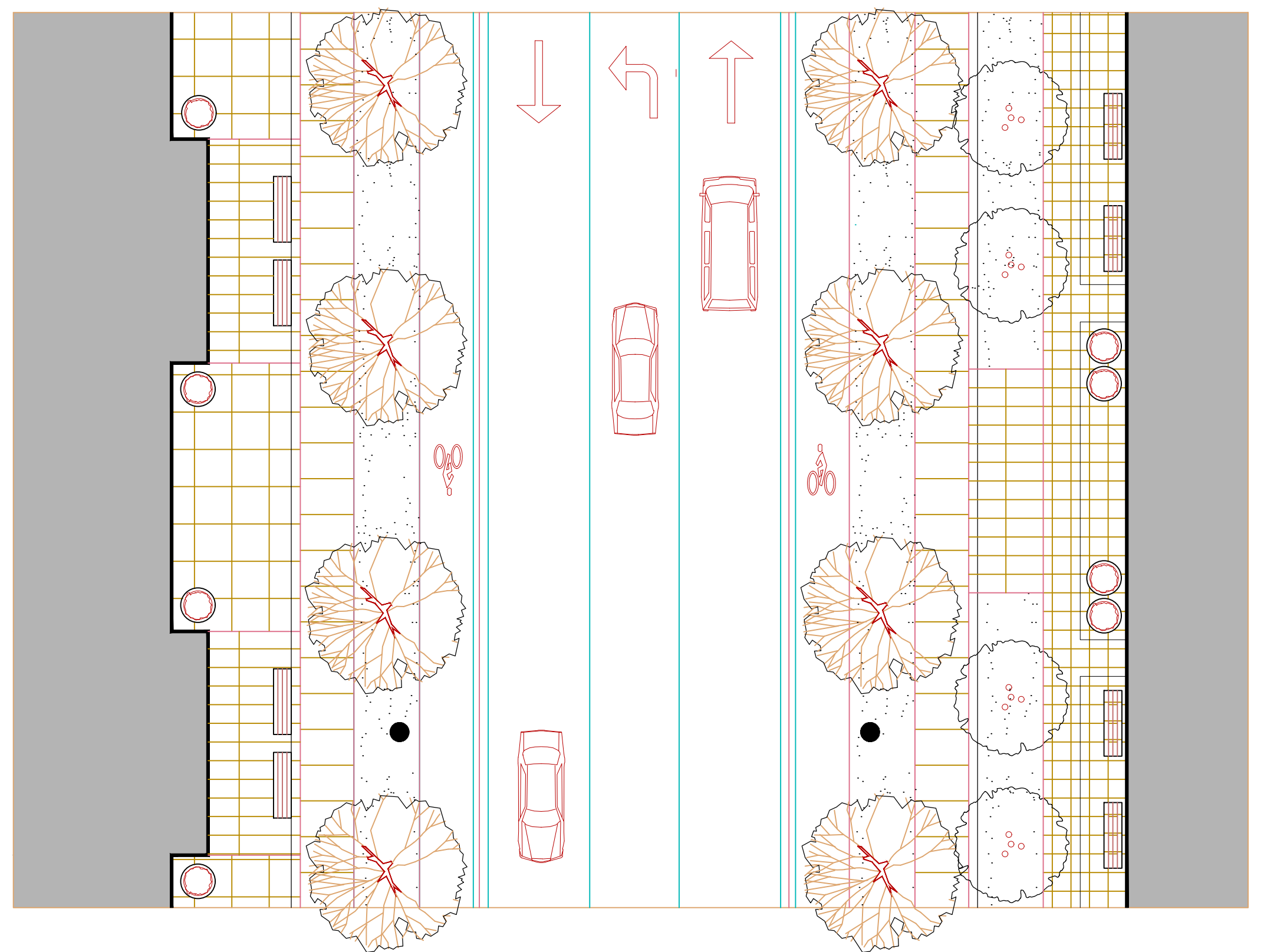
MACVILLE COMMUNITY/ Minor Collector Road (19.5m) and Major Collector (Humber Station) (23.0m)



MINOR COLLECTOR ROAD - 19.5m R.O.W.



MAJOR COLLECTOR (HUMBER STATION) - 23.0m R.O.W.



TOWN OF CALEDON
REGIONAL MUNICIPALITY OF PEEL
MACVILLE SECONDARY PLAN
(BRES OPTION 3 LANDS)
**PRELIMINARY
ROW CROSS SECTIONS
(19.5m and 23.0m)**

SURVEYED BY:	J.D.B.	DATE:	2020	JOB NO.	15-458
DRAWN BY:	V.P.	CHECKED BY:	D.Z.	DRAWING NO.	SHEET NO.
DESIGNED BY:	D.Z.	CHECKED BY:	D.Z.		309
SCALE:	NTS	DATE:	JAN. 2021		