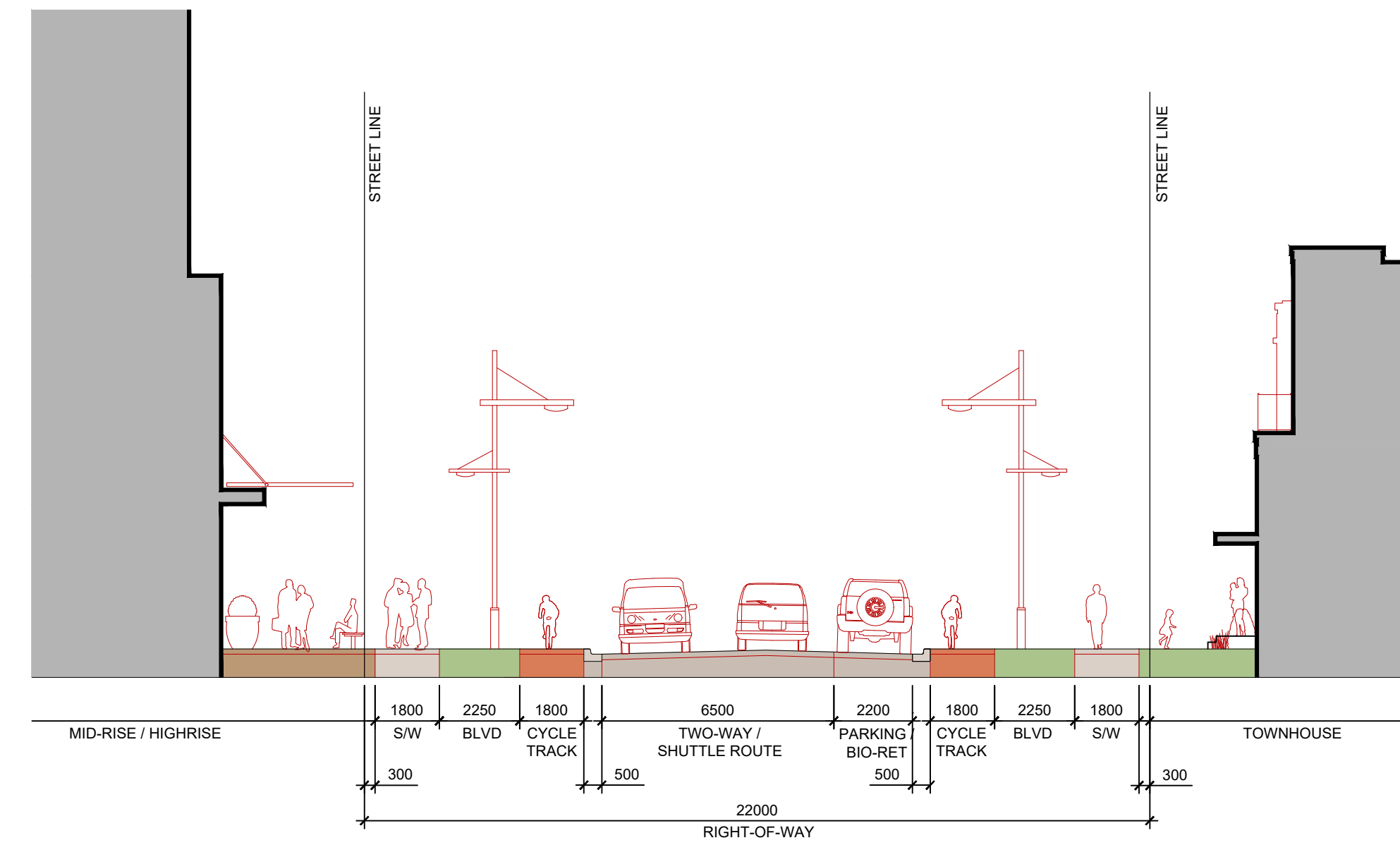
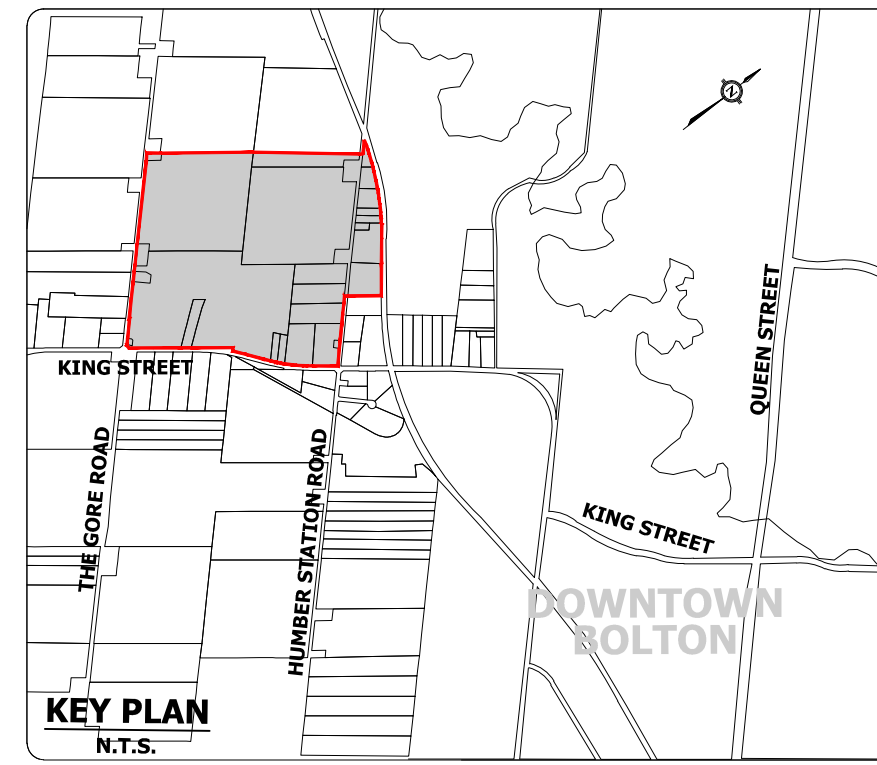
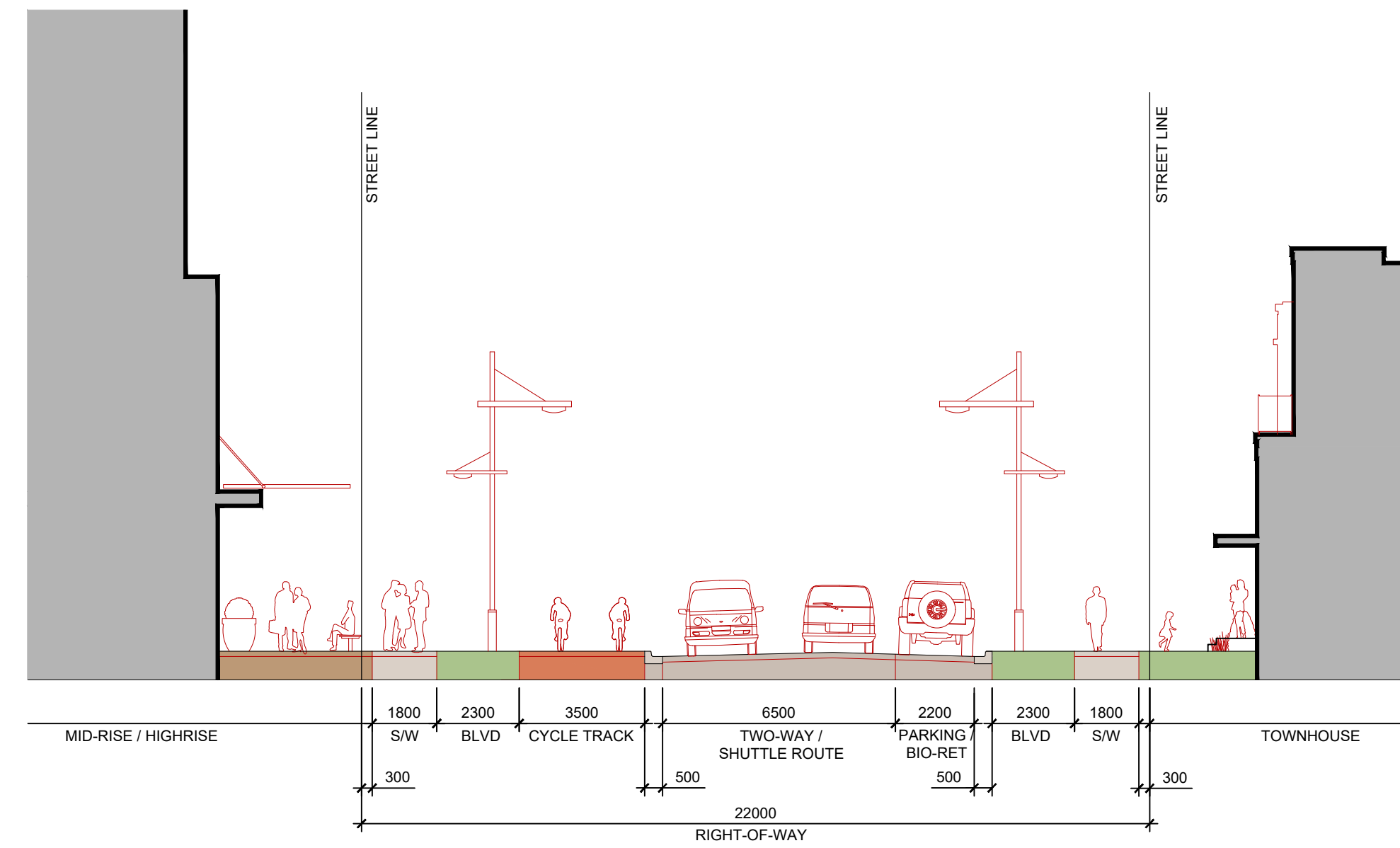


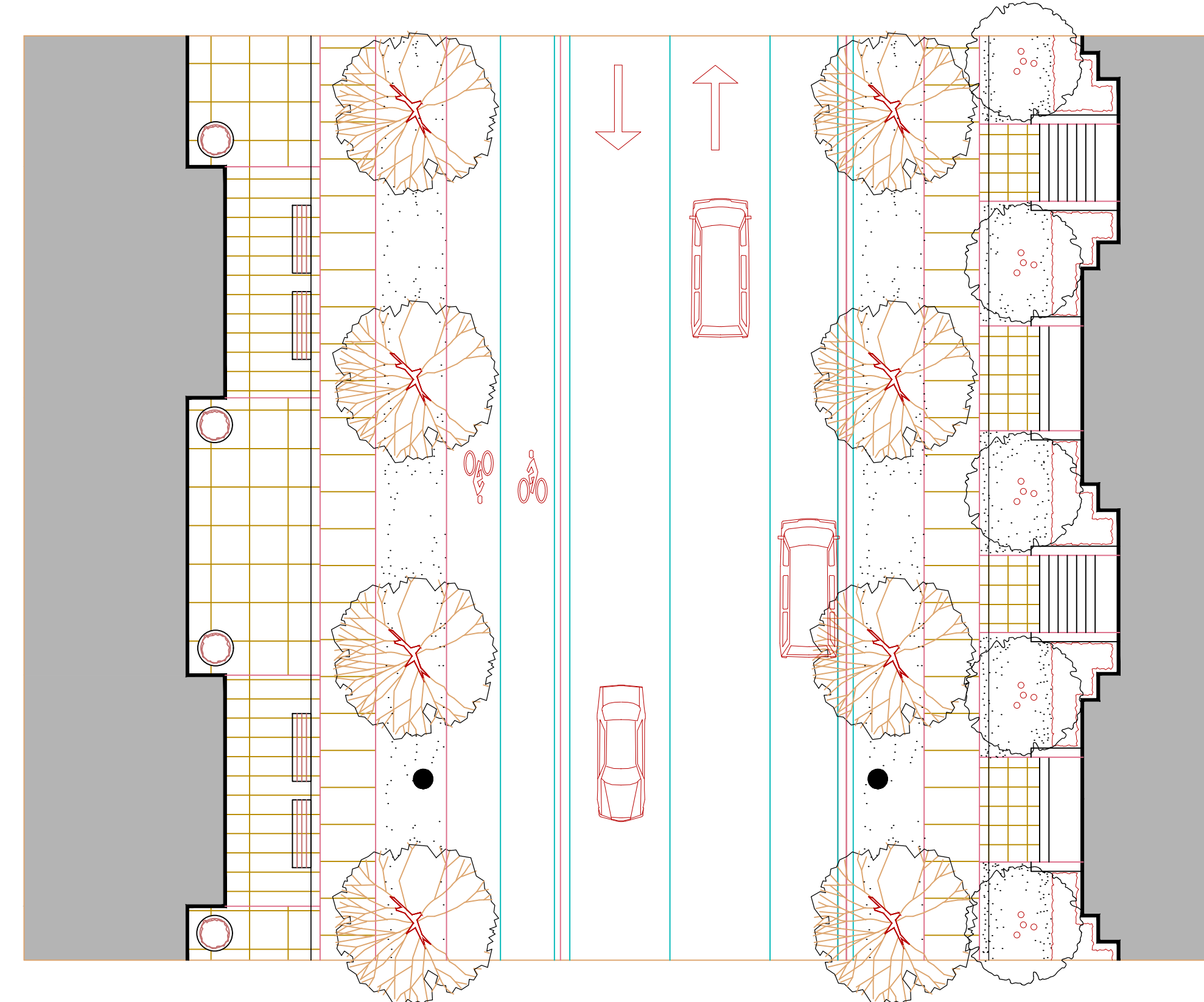
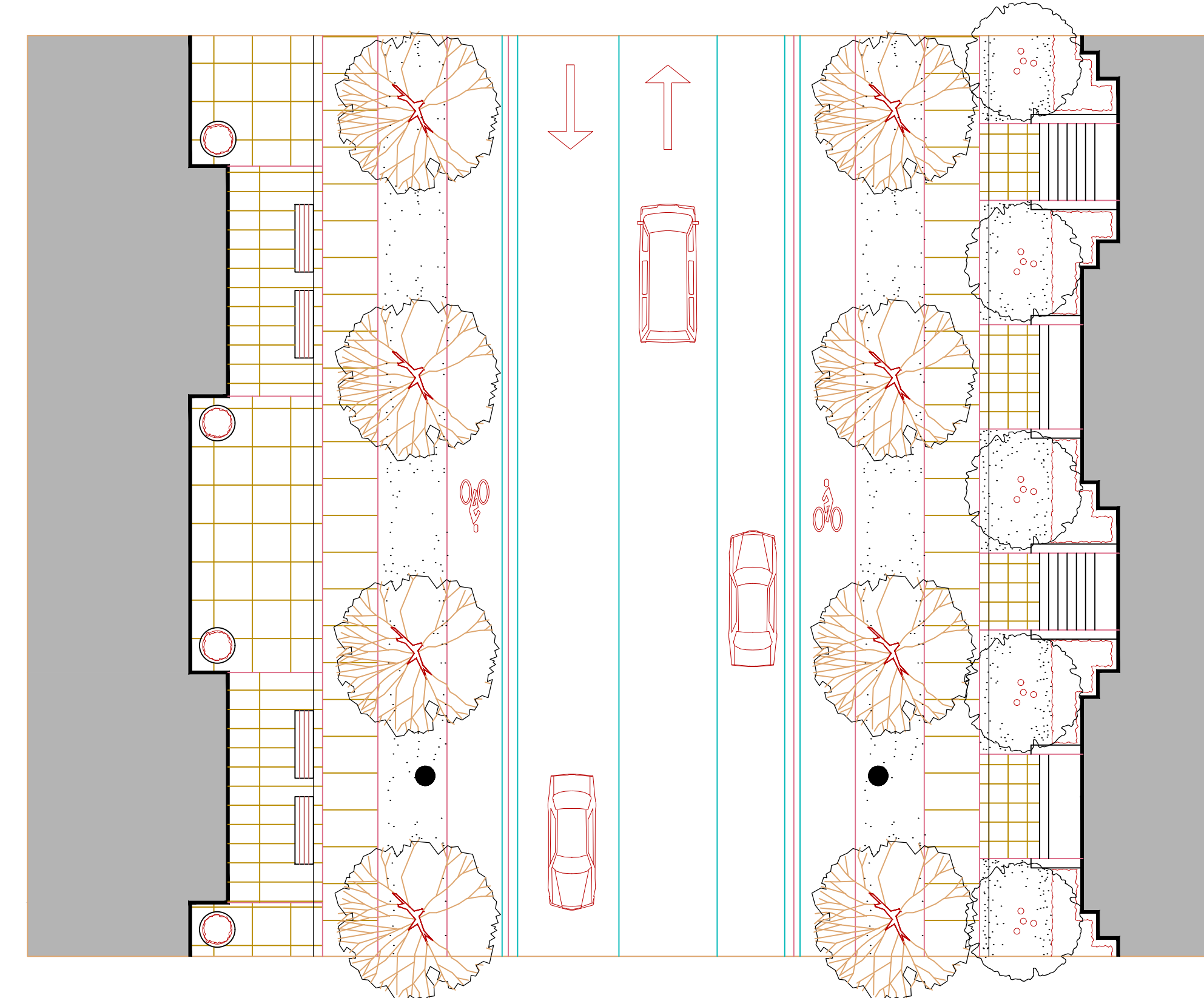
# MACVILLE COMMUNITY / Multi-Modal Mobility Ring Road



MAJOR COLLECTOR (MULTI-MODAL MOBILITY RING ROAD) 22.0m R.O.W. (OPTION 1)



MULTI-MODAL MOBILITY RING ROAD - 22.0m R.O.W. (OPTION 2)



TOWN OF CALEDON  
REGIONAL MUNICIPALITY OF PEEL  
MACVILLE SECONDARY PLAN  
(BRES OPTION 3 LANDS)

**PRELIMINARY  
ROW CROSS SECTIONS  
(22.0m)**

SURVEYED BY:	J.D.B.	DATE:	2020	JOB NO.	15-458
DRAWN BY:	V.P.	CHECKED BY:	D.Z.	DRAWING NO.	SHEET NO.
DESIGNED BY:	D.Z.	CHECKED BY:	D.Z.		
SCALE:	NTS	DATE:	JAN. 2021		<b>308</b>