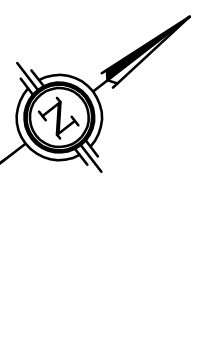
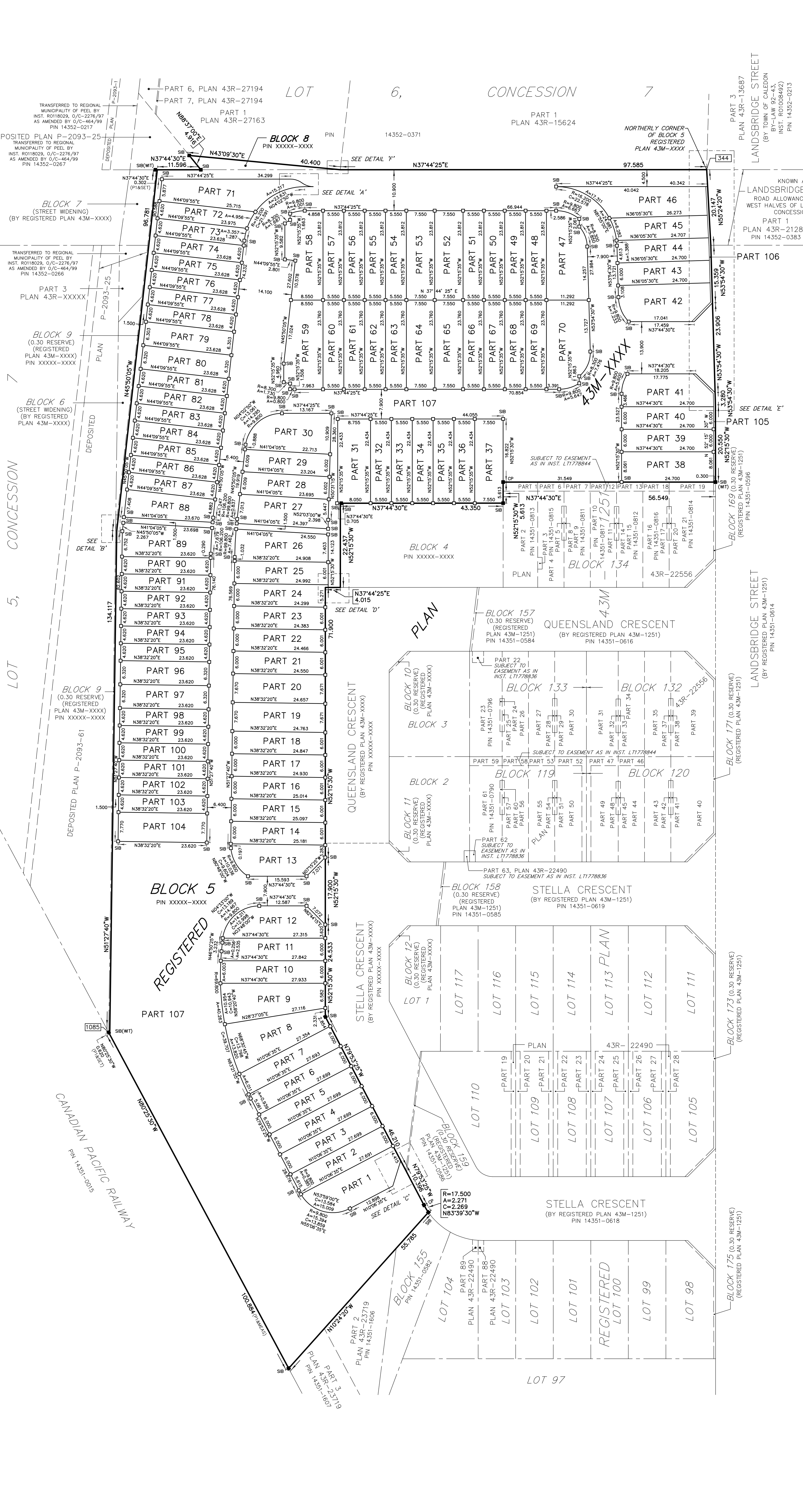


CURVE DATA				
PART NO.	RADIUS (METRES)	ARC (METRES)	CHORD (METRES)	BEARING
PART 2	9.800	0.385	0.385	N 81°01'00" W
PART 3	69.800	0.939	0.939	N 73°30'15" W
PART 4	69.800	6.011	6.011	N 70°39'30" W
PART 5	69.800	6.003	6.003	N 51°23'00" W
PART 6	69.800	2.535	2.535	N 70°39'30" W
PART 7	9.800	0.226	0.226	N 46°02'30" W
PART 8	9.800	7.462	7.462	N 46°02'30" W
PART 9	99.800	0.837	0.837	N 46°02'30" W
PART 10	9.800	5.860	5.860	N 46°02'30" W
PART 11	9.800	7.333	7.070	N 70°39'30" W
PART 12	16.200	1.368	1.368	N 69°50'30" W
PART 13	16.200	6.382	6.242	N 69°50'30" W
PART 14	16.200	17.311	16.489	N 69°50'30" W
PART 15	9.800	6.667	6.540	N 21°13'50" W
PART 16	8.300	5.860	5.730	N 21°13'50" W
PART 17	8.300	1.687	1.684	N 03°57'30" W
PART 18	9.800	4.001	3.974	N 20°02'30" W
PART 19	9.800	0.860	0.860	N 40°04'45" W
PART 20	8.300	1.720	1.727	N 49°14'15" W
PART 21	8.300	7.478	7.225	N 28°06'30" W
PART 22	9.800	5.647	5.570	N 21°13'50" W
PART 23	16.200	4.666	4.537	N 21°13'50" W
PART 24	16.200	3.307	3.301	N 39°53'50" W
PART 25	106.200	1.347	1.347	N 49°19'00" W
PART 26	106.200	7.679	7.678	N 49°19'00" W
PART 27	9.800	5.860	5.524	N 49°19'00" W
PART 28	99.800	7.462	7.460	N 49°19'00" W
PART 29	17.500	2.271	2.269	N 82°39'30" W
PART 30	9.800	7.333	7.070	N 70°39'30" W
PART 31	106.200	7.679	7.678	N 49°19'00" W
PART 32	106.200	1.347	1.347	N 49°19'00" W
PART 33	9.800	0.860	0.860	N 40°04'45" W
PART 34	8.300	1.720	1.727	N 49°14'15" W
PART 35	8.300	1.684	1.687	N 03°57'30" W
PART 36	9.800	4.001	3.974	N 20°02'30" W
PART 37	9.800	0.860	0.860	N 40°04'45" W
PART 38	9.800	5.860	5.730	N 21°13'50" W
PART 39	106.200	7.679	7.678	N 49°19'00" W
PART 40	9.800	5.647	5.570	N 21°13'50" W



PLAN OF SURVEY OF
BLOCKS 5 AND 8
REGISTERED PLAN 43M-XXXX
TOWN OF CALEDON
THE REGIONAL MUNICIPALITY OF PEEL

SCALE 1 : 500

HOLDING JONES VANDERVEEN INC.
ONTARIO LAND SURVEYORS

NOTES		
■	DENOTES	SURVEY MONUMENT FOUND
□	DENOTES	STANDARD IRON BAR SET
○	DENOTES	IRON BAR SET
SB	DENOTES	IRON BAR
SSB	DENOTES	STANDARD IRON BAR
CP	DENOTES	SHORT STANDARD IRON BAR
WT	DENOTES	CONCRETE PIN
1345	DENOTES	WITNESS
1606	DENOTES	GUIDO PAPA SURVEYING LTD., O.L.S.
HJV	DENOTES	BIASON SURVEYING INC.
DHO	DENOTES	HOLDING JONES VANDERVEEN INC. O.L.S.
SCP	DENOTES	DEPARTMENT OF HIGHWAYS ONTARIO
PI	DENOTES	SPECIFIED CONTROL POINT

ALL SURVEY MONUMENTS FOUND ARE MARKED (HJV), UNLESS OTHERWISE NOTED.

BEARING, DISTANCE AND CO-ORDINATE NOTES		
BEARINGS AND CO-ORDINATES ARE GRID AND ARE DERIVED FROM SPECIFIED CONTROL POINTS No. 00919724251 AND No. 00919724253 AND ARE REFERRED TO THE 4 th UNIVERSAL TRANSVERSE MERCATOR GRID PROJECTION, ZONE 17, CENTRAL MERIDIAN 81°00' WEST LONGITUDE, NAD 83 (ORIGINAL).		
CO-ORDINATES TO URBAN ACCURACY PER SEC. 14(2) OF O. REG. 216/10.		
DISTANCES ARE GROUND AND CAN BE CONVERTED TO GRID BY MULTIPLYING BY THE COMBINED SCALE FACTOR OF 0.99963.		
POINT ID	EASTING	NORTHING
SCP 00919724251	601705.174	4858923.524
SCP 00919724253	601198.505	4859423.718
344	602801.424	4858132.522
1085	602885.565	4857866.043
CO-ORDINATES CANNOT, IN THEMSELVES, BE USED TO RE-ESTABLISH CORNERS OR BOUNDARIES SHOWN ON THIS PLAN.		
DISTANCES AND CO-ORDINATES SHOWN ON THIS PLAN ARE IN METRES AND CAN BE CONVERTED TO FEET BY DIVIDING BY 0.3048.		

SURVEYOR'S CERTIFICATE

I CERTIFY THAT:

1. THIS SURVEY AND PLAN ARE CORRECT AND IN ACCORDANCE WITH THE SURVEYS ACT, THE SURVEYORS ACT AND THE LAND TITLES ACT AND THE REGULATIONS MADE UNDER THEM.

2. THE SURVEY WAS COMPLETED ON

DATE

THOMAS R. REED
ONTARIO LAND SURVEYOR

DATE : JANUARY 17, 2020

HOLDING JONES VANDERVEEN INC.
ONTARIO LAND SURVEYORS
1700 LANGSTAFF ROAD, SUITE 1002
VAUGHAN, ON L4K 3S3
PHONE: 905-660-4000, 416-445-3800 EMAIL: hjv@hjv-ols.co

SCALE: 1:500 DRAWN BY: J.Y./V.P. CHKD. BY: D.H. JOB NO: 15-2446 REF2