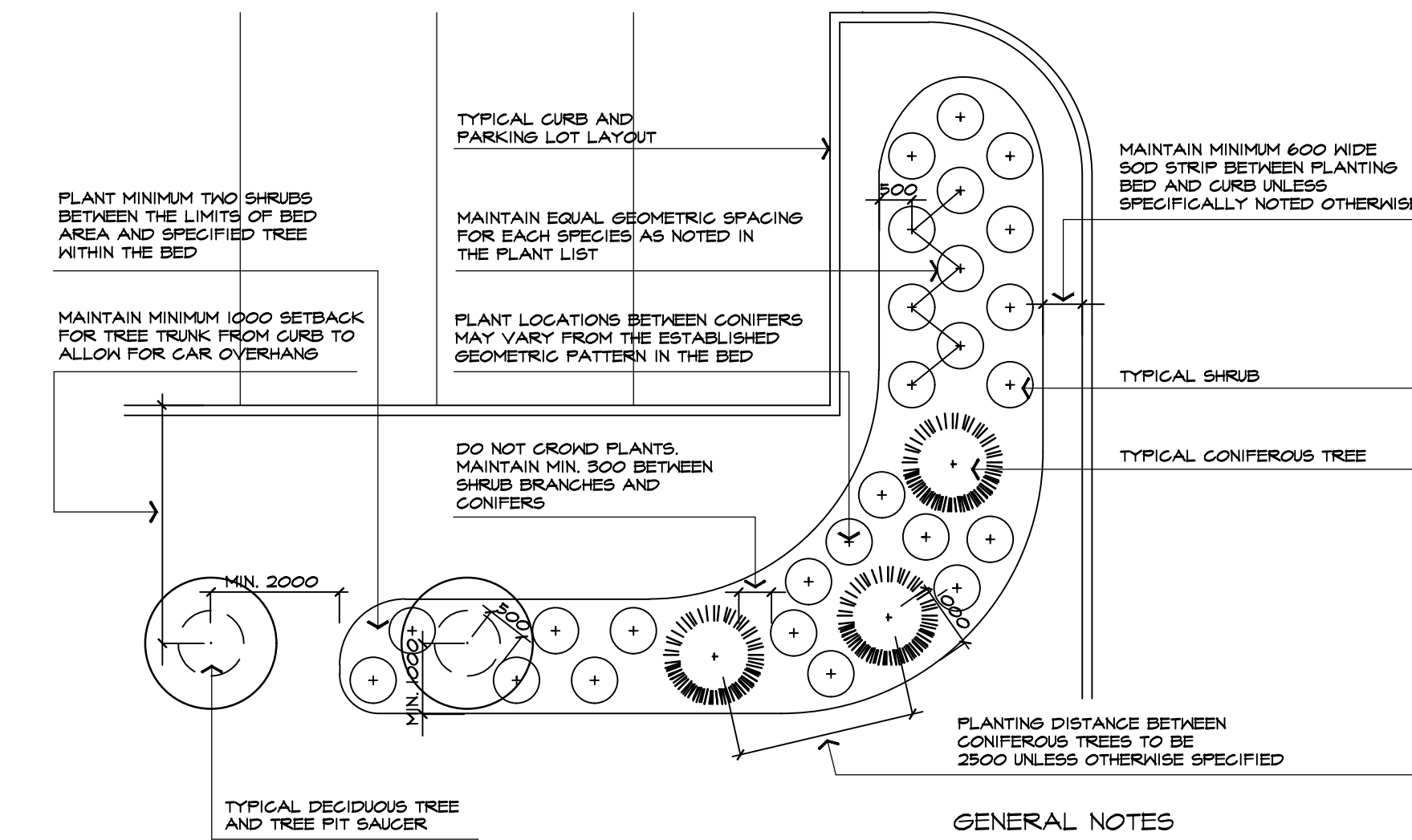
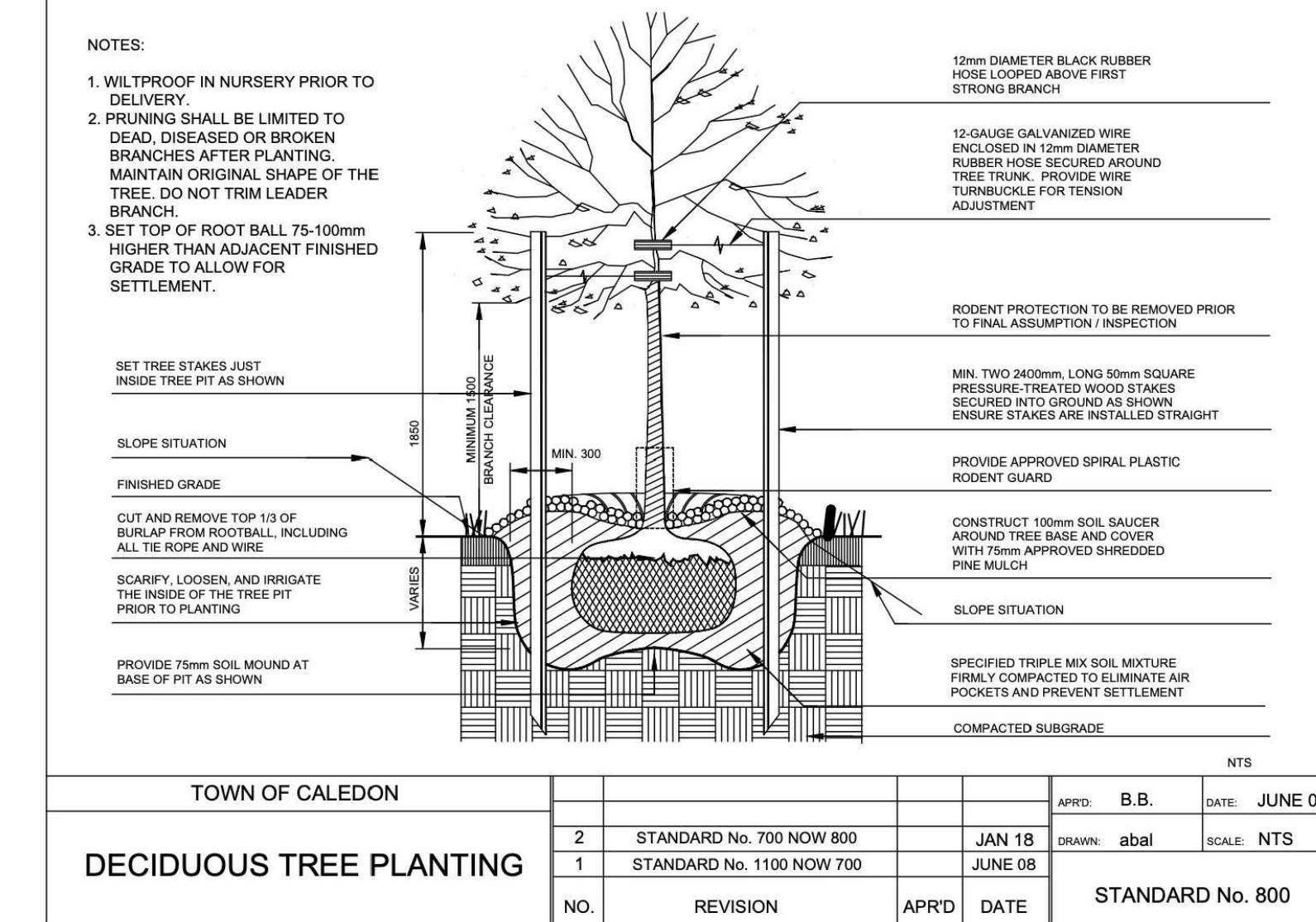


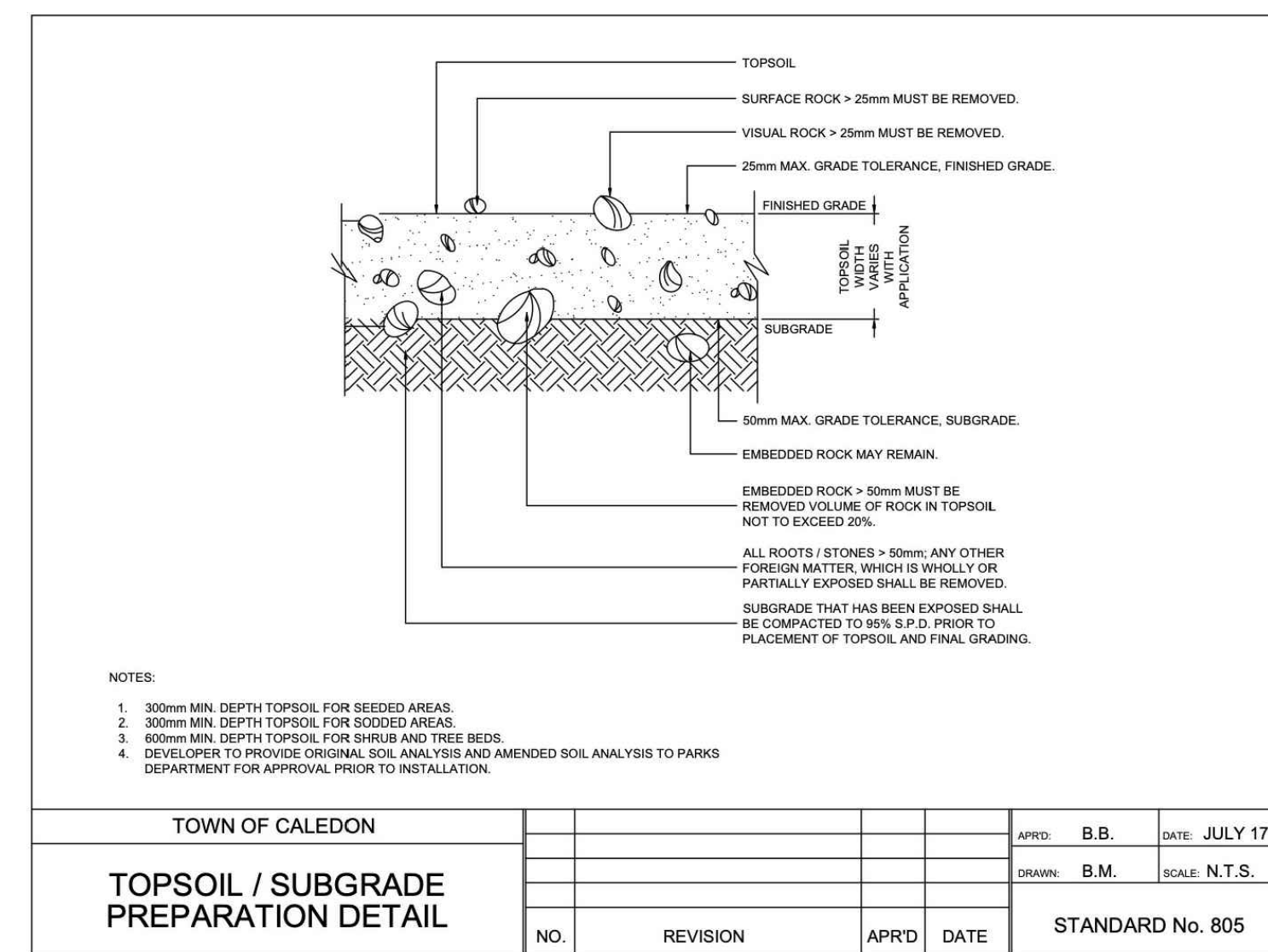
8 PERENNIAL PLANTING DETAIL  
TOWN OF CALEDON STANDARD DETAIL NTS



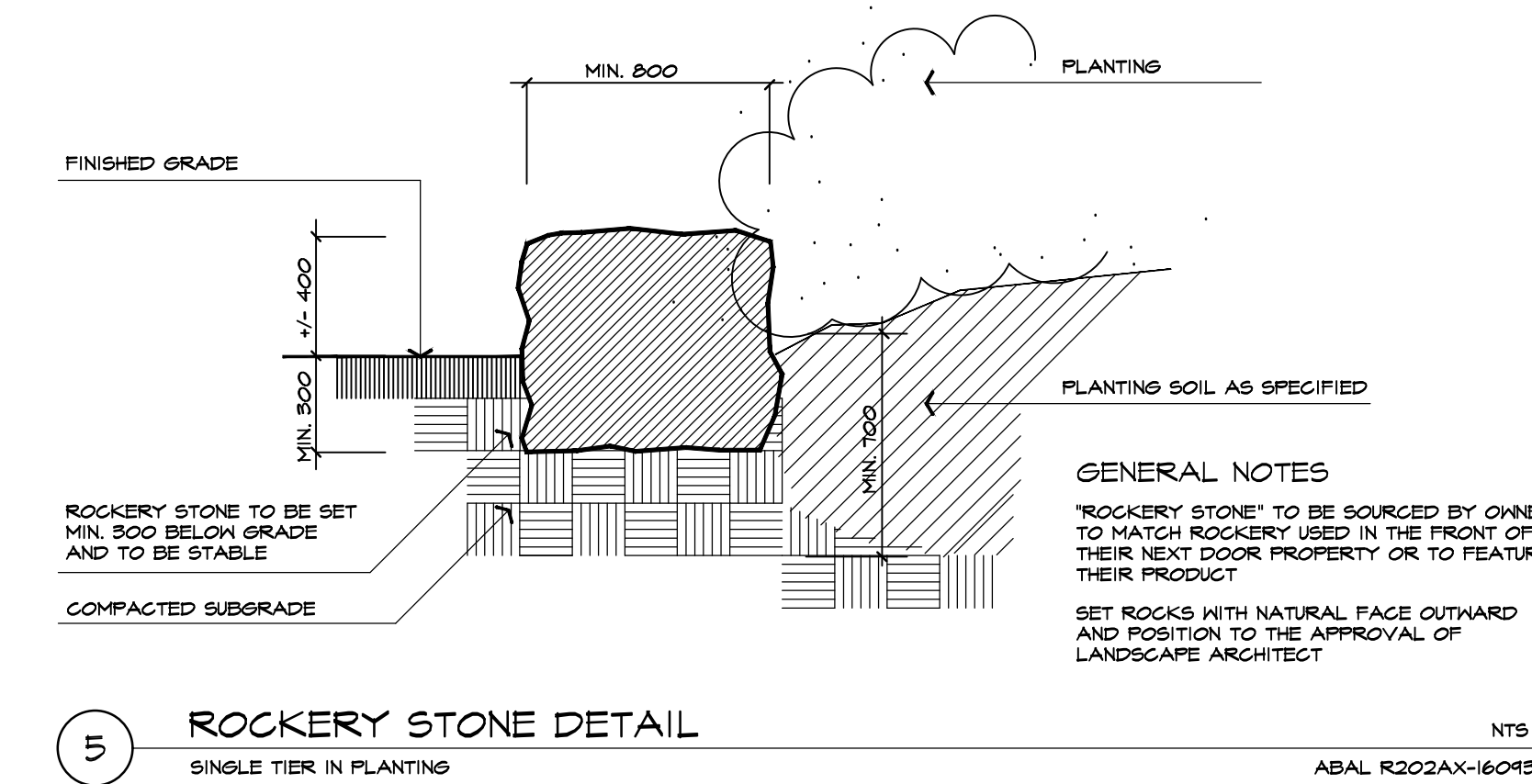
4 TYPICAL PLANTING LAYOUT  
SYMBOLS REPRESENT INSTALLED PLANT SIZE NTS  
ABAL P401-940326



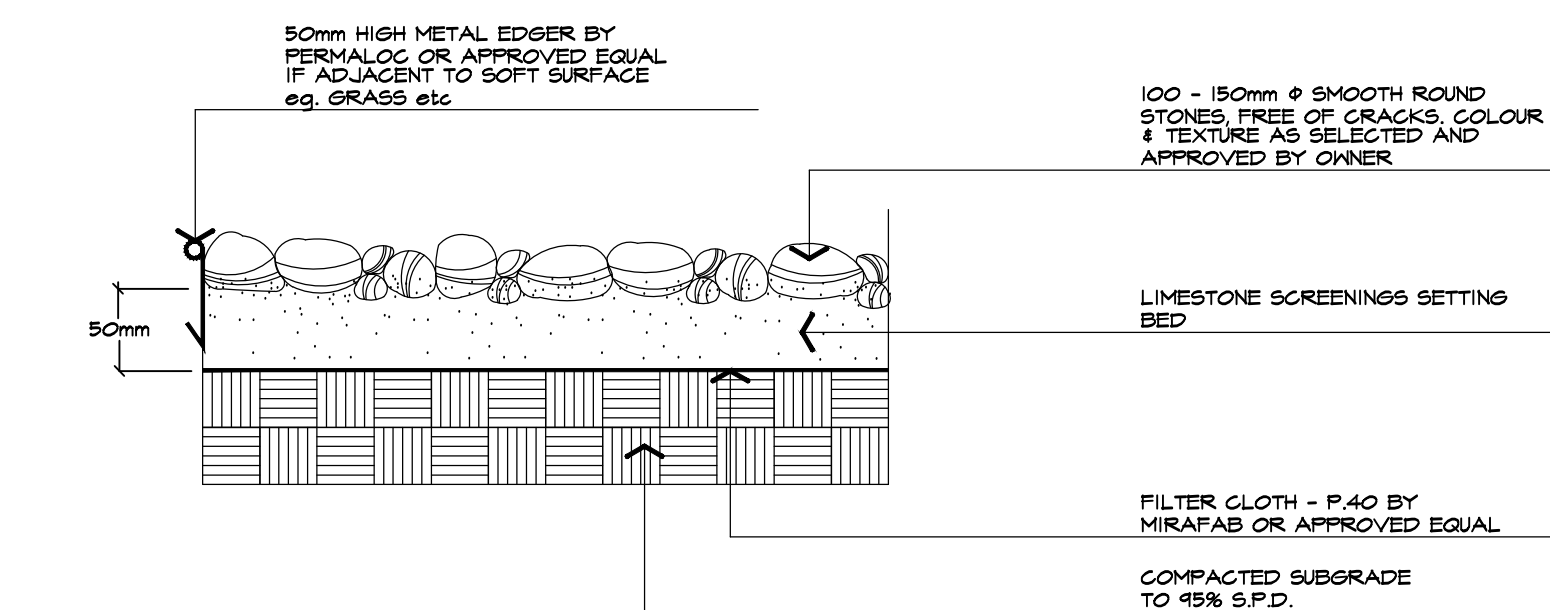
1 DECIDUOUS TREE PLANTING  
TOWN OF CALEDON STANDARD DETAIL NTS



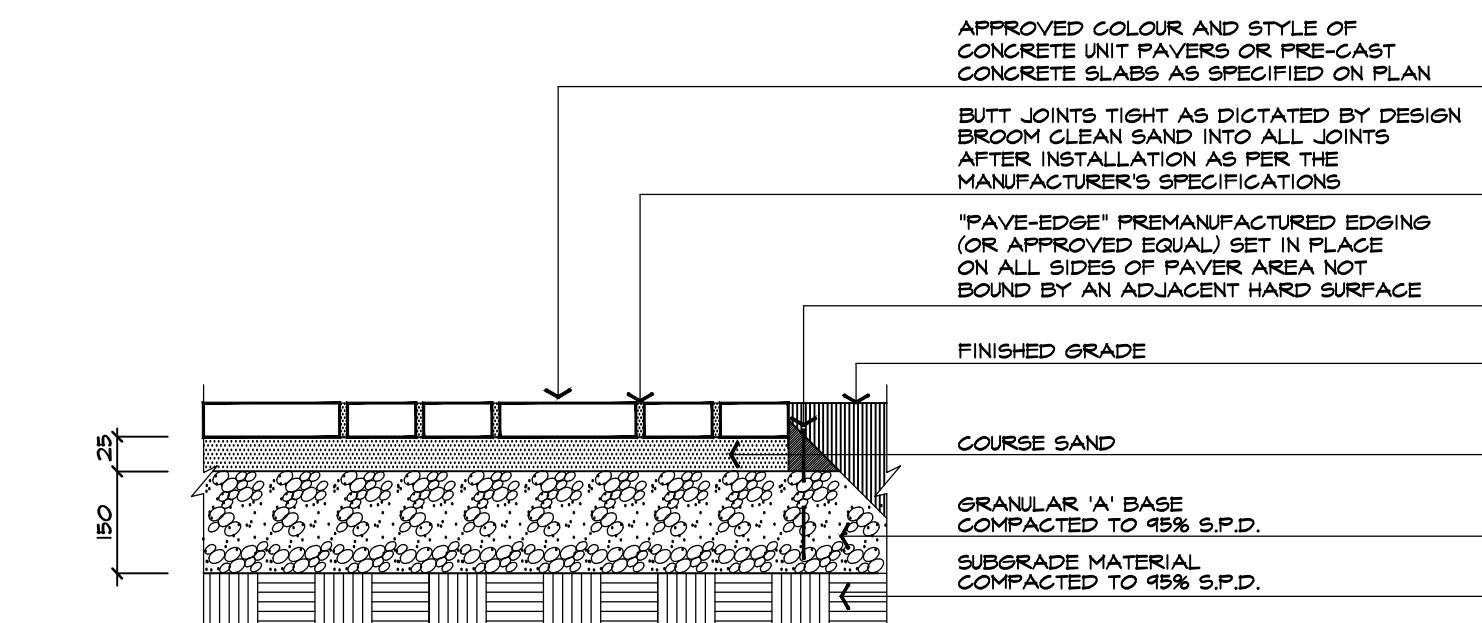
9 TOPSOIL / SUBGRADE DETAIL  
TOWN OF CALEDON STANDARD DETAIL NTS



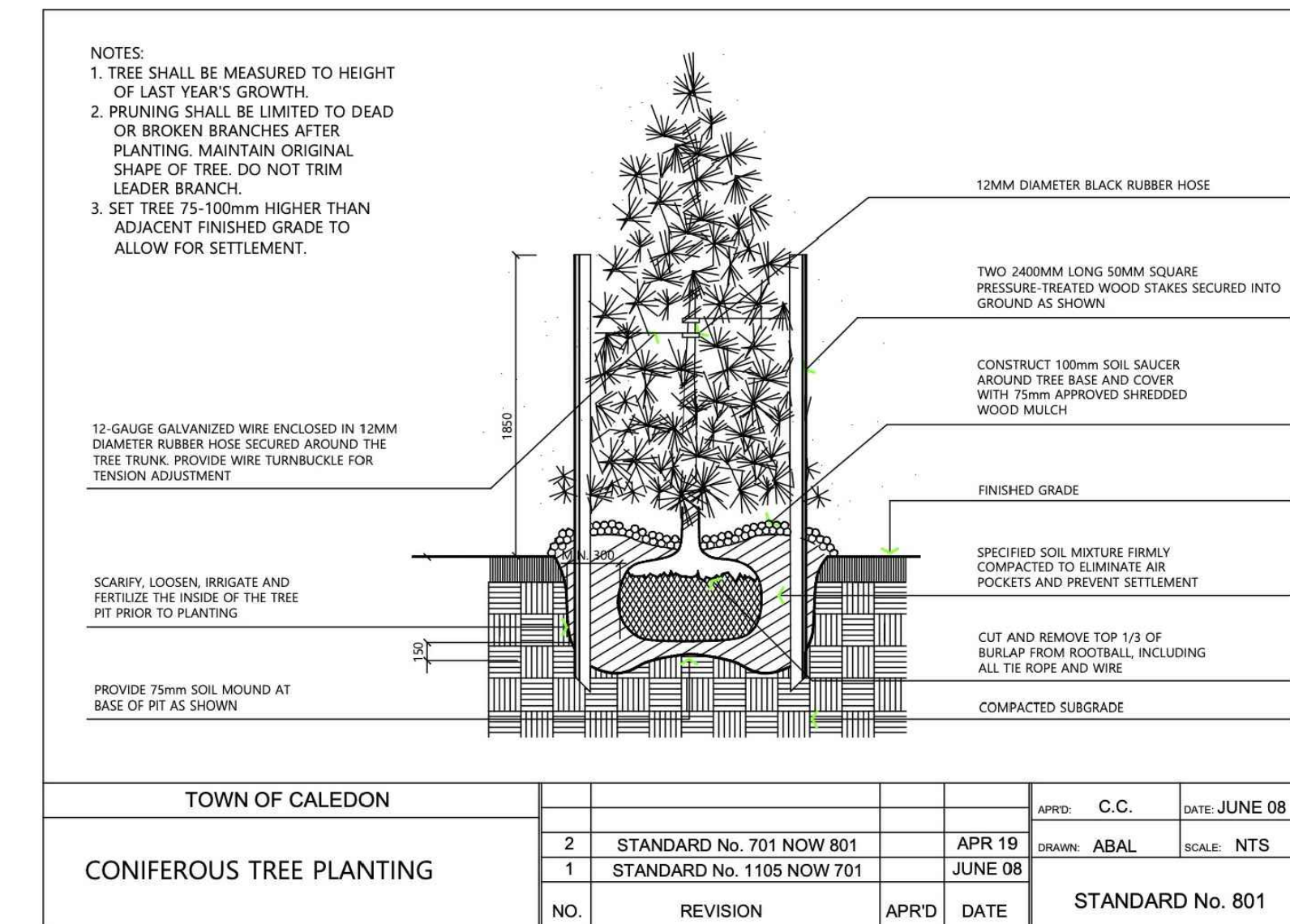
5 ROCKERY STONE DETAIL  
SINGLE TIER IN PLANTING NTS  
ABAL R202AX-160950



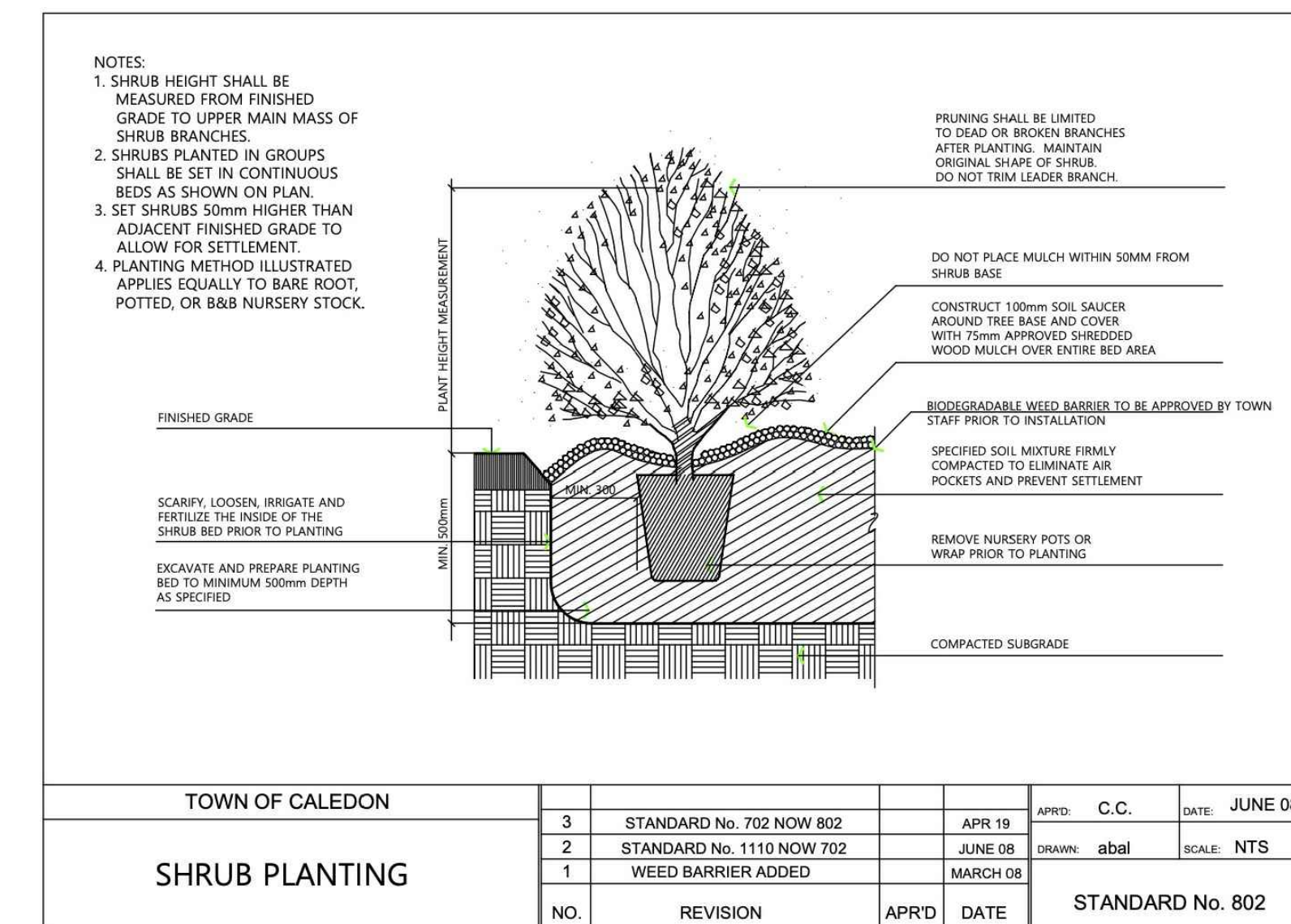
6 BEACH STONES DETAIL NTS  
ABAL H601-H60518



7 CONCRETE UNIT PAVER DETAIL NTS  
ABAL H301-070613



2 CONIFEROUS TREE PLANTING  
TOWN OF CALEDON STANDARD DETAIL NTS



3 SHRUB PLANTING  
TOWN OF CALEDON STANDARD DETAIL NTS

MULCH NOTE:  
ALL MULCH TO BE BLACK IN COLOUR

3.	JUN 1 2020	ISSUED FOR SECOND SUBMISSION	LK/RS
2.	JUNE 1 2017	REISSUED FOR SPA SUBMISSION	DN
1.	NOV. 3 2016	REISSUED FOR SPA SUBMISSION	BF
0.	OCT. 3 2016	ISSUED FOR FIRST SUBMISSION	LH/BF
no.	date	version	by

All information hereon to be checked and verified at the site and any discrepancies must be reported to and clarified by the landscape architect before commencing work. All drawings, specifications, details, digital information, etc., prepared by the landscape architect are instruments of service and as such are his property and must be returned at his request.

**ALEXANDER BUDREVICS**  
LANDSCAPE ARCHITECTS

895 Don Mills Road, Second Tower, Suite 212  
Toronto, Ontario, Canada, M3C 1W3

416.444.5201  
416.444.5208

www.budrevics.com

ASSOCIATION OF LANDSCAPE ARCHITECTS (ON) LESLIE KIELA MEMBER OALA

project SPA #: 16-063

**KING STREET INDUSTRIAL**  
8186 KING STREET  
BOLTON, ONTARIO

2473903 ONTARIO INC.

drawing

**LANDSCAPE DETAILS**

date	APRIL 20, 2016	drawn	LH
scale	AS SHOWN	file	3032 D1 R3-200601
direction		project no.	3032
		sheet no.	D-1