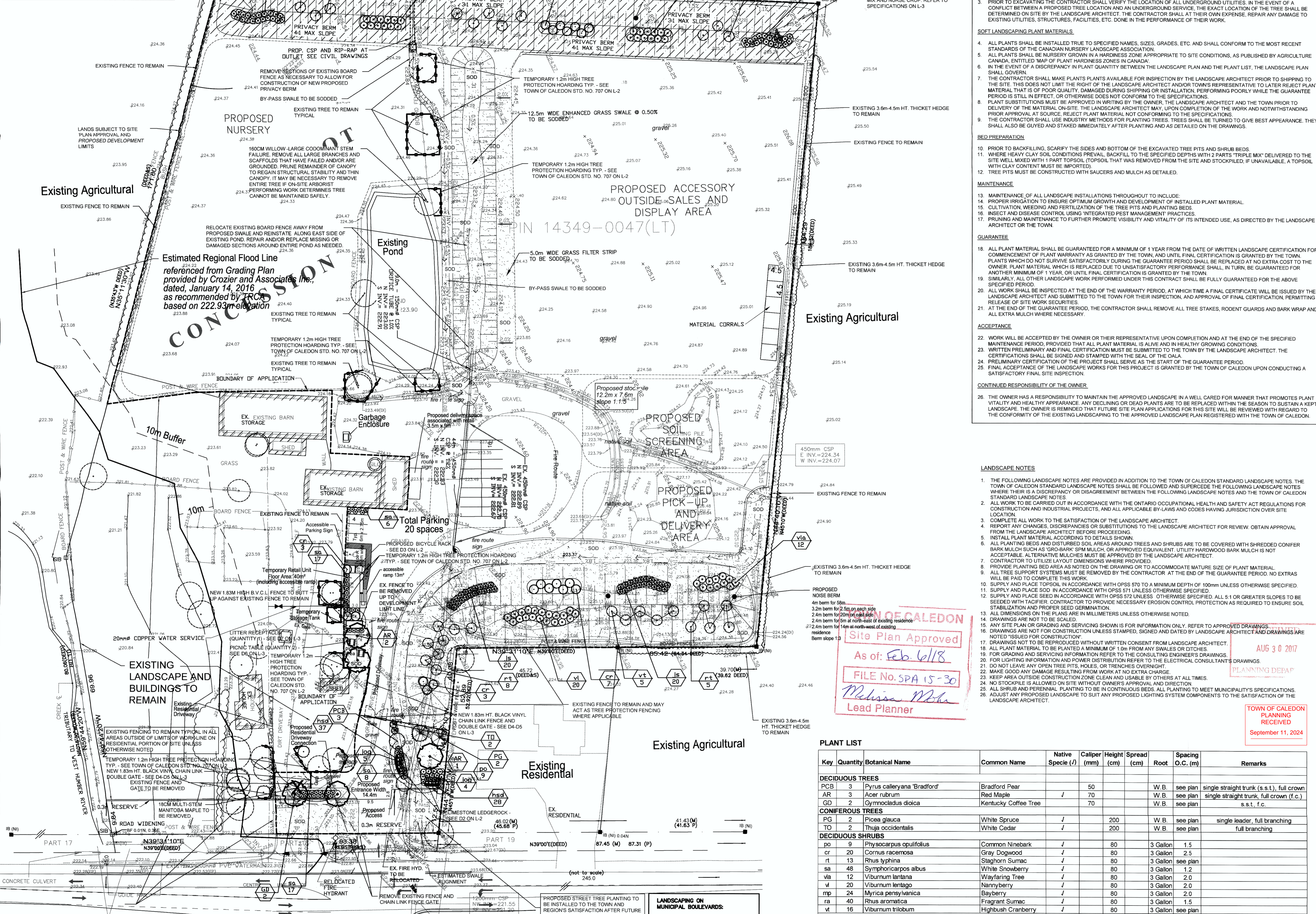


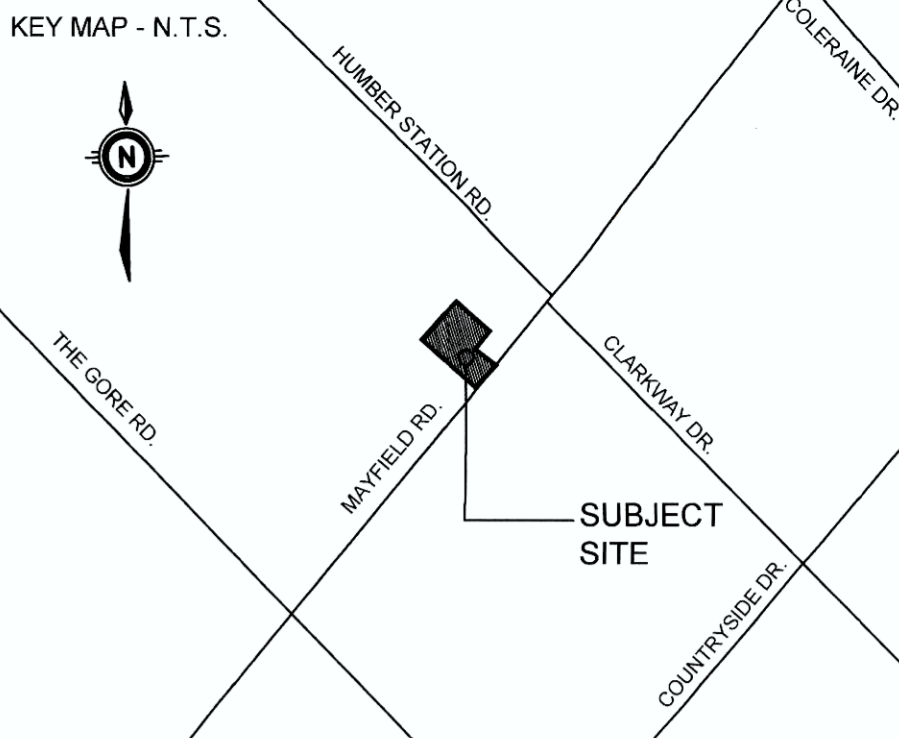
GENERAL NOTES:
 1. THE SITE PLAN DATED AUGUST 11, 2016 WAS PREPARED BY WESTON CONSULTING. THE EROSION & SEDIMENT CONTROL, SERVING AND GRADING PLAN, DATED SEPTEMBER 30, 2016 WAS PREPARED BY CROZIER & ASSOCIATES CONSULTING ENGINEERS. THE TOPOGRAPHICAL SURVEY PLAN, DATED MARCH 19, 2012 WAS PREPARED BY ALLIANCE SURVEYS INC.. THESE DRAWINGS AND INFORMATION FROM THEM WERE USED AS A BASE FOR THE PREPARATION OF THE LANDSCAPE PLAN.



- TOWN OF CALEDON STANDARD LANDSCAPE NOTES**
- GENERAL**
- THESE SPECIFICATIONS ARE TO BE READ IN CONJUNCTION WITH THE GENERAL CONDITIONS OF THE CONTRACT AS PREPARED BY AND AVAILABLE AT THE OFFICE OF THE ARCHITECT.
 - PRIOR TO COMMENCING WORK, THE CONTRACTOR SHALL:
 - FAMILIARIZE THEMSELVES WITH THE PLANS, DETAILS AND SPECIFICATIONS OF THE PROJECT.
 - VISIT THE SITE TO ASCERTAIN AND TAKE ACCOUNT OF EXISTING CONDITIONS AND ANY DEVIATIONS FROM THE PLANS IN WORK BY OTHERS; AND
 - FINALIZE ALL DESIGN ALTERNATIVES IN CONJUNCTION WITH THE LANDSCAPE ARCHITECT.
 - PRIOR TO EXCAVATING THE CONTRACTOR SHALL VERIFY THE LOCATION OF ALL UNDERGROUND UTILITIES. IN THE EVENT OF A CONFLICT BETWEEN A PROPOSED TREE LOCATION AND AN UNDERGROUND UTILITY, THE EXACT LOCATION OF THE TREE SHALL BE DETERMINED ON SITE BY THE LANDSCAPE ARCHITECT. THE CONTRACTOR SHALL AT THEIR OWN EXPENSE, REPAIR ANY DAMAGE TO EXISTING UTILITIES, STRUCTURES, FACILITIES, ETC. DONE IN THE PERFORMANCE OF THEIR WORK.
- SOFT LANDSCAPING PLANT MATERIALS**
- ALL PLANTS SHALL BE INSTALLED TRUE TO SPECIFIED NAMES, SIZES, GRADES, ETC. AND SHALL CONFORM TO THE MOST RECENT STANDARDS OF THE CANADIAN NURSERY LANDSCAPE ASSOCIATION.
 - ALL PLANTS SHALL BE NURSERY GROWN IN A HARDINESS ZONE APPROPRIATE TO SITE CONDITIONS, AS PUBLISHED BY AGRICULTURE CANADA, ENTITLED 'MAP OF PLANT HARDINESS ZONES IN CANADA'.
 - IN THE EVENT OF A DISCREPANCY IN PLANT QUANTITY BETWEEN THE LANDSCAPE PLAN AND THE PLANT LIST, THE LANDSCAPE PLAN SHALL GOVERN.
 - THE CONTRACTOR SHALL MAKE PLANTS AVAILABLE FOR INSPECTION BY THE LANDSCAPE ARCHITECT PRIOR TO SHIPPING TO THE SITE. THIS DOES NOT LIMIT THE RIGHT OF THE LANDSCAPE ARCHITECT AND/OR TOWN'S REPRESENTATIVE TO LATER REJECT PLANT MATERIAL THAT IS OF POOR QUALITY, DAMAGED DURING SHIPPING OR INSTALLATION, PERFORMING POORLY WHILE THE GUARANTEE PERIOD IS STILL IN EFFECT, OR OTHERWISE DOES NOT CONFORM TO THE SPECIFICATIONS.
 - PLANT SUBSTITUTIONS MUST BE APPROVED IN WRITING BY THE OWNER, THE LANDSCAPE ARCHITECT AND THE TOWN PRIOR TO DELIVERY OF THE MATERIAL ON-SITE. THE LANDSCAPE ARCHITECT MAY, UPON COMPLETION OF THE WORK AND NOTWITHSTANDING PRIOR APPROVAL AT SOURCE, REJECT PLANT MATERIAL NOT CONFORMING TO THE SPECIFICATIONS.
 - THE CONTRACTOR SHALL USE INDUSTRY METHODS FOR PLANTING TREES. TREES SHALL BE TURNED TO GIVE BEST APPEARANCE. THEY SHALL ALSO BE GUYED AND STAKED IMMEDIATELY AFTER PLANTING AND AS DETAILED ON THE DRAWINGS.
- BED PREPARATION**
- PRIOR TO BACKFILLING, SCARIFY THE SIDES AND BOTTOM OF THE EXCAVATED TREE PITS AND SHRUB BEDS.
 - WHERE HEAVY OR SOIL CONDITIONS PRESENT, BACKFILL TO THE SPECIFIED DEPTH WITH 2 PARTS 'TRIPLE MIX' DELIVERED TO THE SITE WELL MIXED WITH 1 PART TOPSOIL (TOPSOIL THAT WAS REMOVED FROM THE SITE AND STOCKPILED, IF UNAVAILABLE, A TOPSOIL WITH CLAY CONTENT MUST BE IMPORTED).
 - TREE PITS MUST BE CONSTRUCTED WITH SAUCERS AND MULCH AS DETAILED.
- MAINTENANCE**
- MAINTENANCE OF ALL LANDSCAPE INSTALLATIONS THROUGHOUT TO INCLUDE:
 - PROPER IRRIGATION TO ENSURE OPTIMUM GROWTH AND DEVELOPMENT OF INSTALLED PLANT MATERIAL.
 - CULTIVATION, WEEDING AND FERTILIZATION OF THE TREE PITS AND PLANTING BEDS.
 - INSECT AND DISEASE CONTROL USING INTEGRATED PEST MANAGEMENT PRACTICES.
 - PRUNING AND MAINTENANCE TO FURTHER PROMOTE VISIBILITY AND VITALITY OF ITS INTENDED USE, AS DIRECTED BY THE LANDSCAPE ARCHITECT OR THE TOWN.
- GUARANTEE**
- ALL PLANT MATERIAL SHALL BE GUARANTEED FOR A MINIMUM OF 1 YEAR FROM THE DATE OF WRITTEN LANDSCAPE CERTIFICATION FOR COMMENCEMENT OF WORK. ANY DECLINING OR DEAD PLANTS ARE TO BE REPLACED WITHIN THE SEASON TO SUSTAIN A KEPT LANDSCAPE. THE OWNER IS REMINDED THAT FUTURE SITE PLAN APPLICATIONS FOR THIS SITE WILL BE REVIEWED WITH REGARD TO THE CONFORMITY OF THE EXISTING LANDSCAPING TO THE APPROVED LANDSCAPE PLAN REGISTERED WITH THE TOWN OF CALEDON.
- CONTINUED RESPONSIBILITY OF THE OWNER**
- THE OWNER HAS A RESPONSIBILITY TO MAINTAIN THE APPROVED LANDSCAPE IN A WELL-CARED FOR MANNER THAT PROMOTES PLANT VITALITY AND HEALTHY APPEARANCE. ANY DECLINING OR DEAD PLANTS ARE TO BE REPLACED WITHIN THE SEASON TO SUSTAIN A KEPT LANDSCAPE. THE OWNER IS REMINDED THAT FUTURE SITE PLAN APPLICATIONS FOR THIS SITE WILL BE REVIEWED WITH REGARD TO THE CONFORMITY OF THE EXISTING LANDSCAPING TO THE APPROVED LANDSCAPE PLAN REGISTERED WITH THE TOWN OF CALEDON.

- LANDSCAPE NOTES**
- THE FOLLOWING LANDSCAPE NOTES ARE PROVIDED IN ADDITION TO THE TOWN OF CALEDON STANDARD LANDSCAPE NOTES. THE TOWN OF CALEDON STANDARD LANDSCAPE NOTES SHALL BE FOLLOWED AND SUPERCEDE THE FOLLOWING LANDSCAPE NOTES WHERE THERE IS A DISCREPANCY OR DISAGREEMENT BETWEEN THE FOLLOWING LANDSCAPE NOTES AND THE TOWN OF CALEDON STANDARD LANDSCAPE NOTES.
 - ALL WORK TO BE CARRIED OUT IN ACCORDANCE WITH THE ONTARIO OCCUPATIONAL HEALTH AND SAFETY ACT REGULATIONS FOR CONSTRUCTION AND INDUSTRIAL PROJECTS, AND ALL APPLICABLE BY-LAWS AND CODES HAVING JURISDICTION OVER SITE LOCATION.
 - COMPLETE ALL WORK TO THE SATISFACTION OF THE LANDSCAPE ARCHITECT.
 - REPORT ANY CHANGES, DISCREPANCIES OR SUBSTITUTIONS TO THE LANDSCAPE ARCHITECT FOR REVIEW. OBTAIN APPROVAL FROM THE LANDSCAPE ARCHITECT BEFORE PROCEEDING.
 - INSTALL PLANT MATERIAL ACCORDING TO DETAILS SHOWN.
 - ALL PLANTING BEDS AND DISTURBED SOIL AREAS AROUND TREES AND SHRUBS ARE TO BE COVERED WITH SHREDDED CONIFER BARK MULCH SUCH AS 'GRO-BARK' SPM MULCH, OR APPROVED EQUIVALENT. UTILITY HARDWOOD BARK MULCH IS NOT ACCEPTABLE. ALTERNATIVE MULCHES MUST BE APPROVED BY THE LANDSCAPE ARCHITECT.
 - CONTRACTOR TO UTILIZE LAYOUT DIMENSIONS WHERE PROVIDED.
 - PROVIDE PLANTING BED AREA NOTED ON THE DRAWING OR TO ACCOMMODATE MATURE SIZE OF PLANT MATERIAL.
 - ALL TREE SUPPORT SYSTEMS MUST BE REMOVED BY THE CONTRACTOR AT THE END OF THE GUARANTEE PERIOD. NO EXTRAS WILL BE PAID TO COMPLETE THIS WORK.
 - SUPPLY AND PLACE TOPSOIL IN ACCORDANCE WITH OPSS 570 TO A MINIMUM DEPTH OF 100mm UNLESS OTHERWISE SPECIFIED.
 - SUPPLY AND PLACE SOD IN ACCORDANCE WITH OPSS 571 UNLESS OTHERWISE SPECIFIED.
 - SUPPLY AND PLACE SEED IN ACCORDANCE WITH OPSS 572 UNLESS OTHERWISE SPECIFIED. ALL 5:1 OR GREATER SLOPES TO BE SEED WITH TACIFIER. CONTRACTOR TO PROVIDE NECESSARY EROSION CONTROL PROTECTION AS REQUIRED TO ENSURE SOIL STABILIZATION AND PROPER SEED GERMINATION.
 - ALL DIMENSIONS ON THE PLANS ARE IN MILLIMETERS UNLESS OTHERWISE NOTED.
 - DRAWINGS ARE NOT TO BE SCALED.
 - ANY SITE PLAN OR GRADING AND SERVING SHOWN IS FOR INFORMATION ONLY. REFER TO APPROVED DRAWINGS.
 - DRAWINGS ARE NOT FOR CONSTRUCTION UNLESS STAMPED, SIGNED AND DATED BY LANDSCAPE ARCHITECT AND DRAWINGS ARE NOTED 'ISSUED FOR CONSTRUCTION'.
 - NO STAKE OR OPEN TRENCH SHALL BE REPRODUCED WITHOUT WRITTEN CONSENT FROM LANDSCAPE ARCHITECT.
 - ALL PLANT MATERIAL TO BE PLANTED A MINIMUM OF 10m FROM ANY SWALES OR DITCHES.
 - FOR GRADING AND SERVING INFORMATION REFER TO THE CONSULTING ENGINEER'S DRAWINGS.
 - FOR LIGHTING INFORMATION AND POWER DISTRIBUTION REFER TO THE ELECTRICAL CONSULTANT'S DRAWINGS.
 - DO NOT LEAVE ANY OPEN TREE PITS, HOLES, OR TRENCHES OVERNIGHT.
 - MAKE GOOD ANY DAMAGE RESULTING FROM WORK AT NO EXTRA CHARGE.
 - KEEP AREA OUTSIDE CONSTRUCTION ZONE CLEAN AND USABLE BY OTHERS AT ALL TIMES.
 - NO STOCKPILES IS ALLOWED ON SITE WITHOUT OWNER'S APPROVAL AND DIRECTION.
 - ALL SHRUB AND PERENNIAL PLANTING TO BE IN CONTINUOUS BEDS. ALL PLANTING TO MEET MUNICIPALITY'S SPECIFICATIONS.
 - ADJUST ANY PROPOSED LANDSCAPE TO SUIT ANY PROPOSED LIGHTING SYSTEM COMPONENTS TO THE SATISFACTION OF THE LANDSCAPE ARCHITECT.

TOWN OF CALEDON
 Site Plan Approved
 As of: Feb 6/18
 FILE No. SPA 15-30
 Melissa M. Bha
 Lead Planner

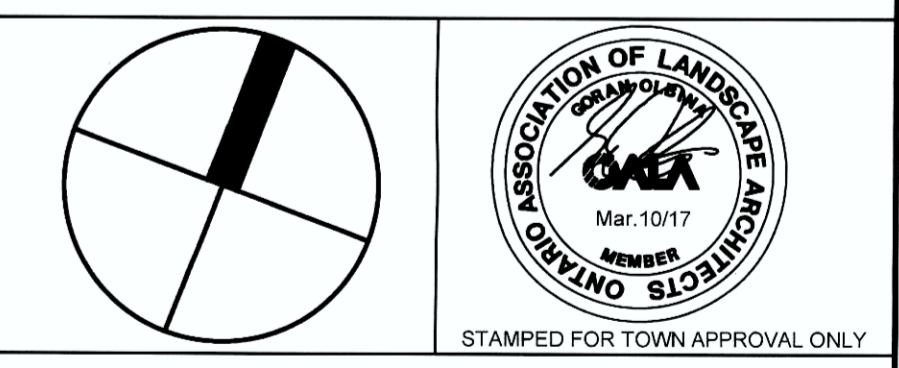


- LEGEND**
- EXISTING DECIDUOUS TREE TO REMAIN
 - EXISTING DECIDUOUS TREE TO BE REMOVED
 - EXISTING CONIFEROUS TREE TO REMAIN
 - PROPOSED DECIDUOUS TREE (LARGE BRANCHING SHADE TREE)
 - PROPOSED DECIDUOUS TREE (SMALL ORNAMENTAL BRANCHING TREE)
 - PROPOSED CONIFEROUS TREE
 - PROPOSED DECIDUOUS SHRUBS
 - PROPOSED CONIFEROUS SHRUBS
 - PROPOSED PERENNIALS
 - PROPOSED PLANT KEY - SEE DETAILS T.O.C. STDS. NO. 700-703, 704-706, AND D1 AND PLANTING AND SOIL NOTES ON L-2
 - PROPOSED 100mm DEPTH TOPSOIL, FINE GRADE AND GRASS SEED / HYDROSEED AREA - SEE L-3 FOR SPECS
 - PROPOSED 100mm DEPTH TOPSOIL, FINE GRADE AND SOD AREA
 - PROPOSED 1.83m HIGH BLACK VINYL CHAIN LINK FENCE - SEE DETAIL D4 & D5 ON L-3
 - PROPOSED LIMESTONE LEDGEROCK - SEE DETAIL D2 ON L-2
 - TEMPORARY 1.2m HT. TREE PROTECTION HOARDING - SEE T.O.C. DETAIL NO. 707 ON L-2

TOWN OF CALEDON FILE # SPA 2015-0030

No.	DATE	BY	REVISIONS
8	MAR 10, 2017	GO	ROAD WIDENING/PROPERTY LINE CHANGES PER SITE PLAN
7	OCT 25, 2016	GO	PER SITE AND CIVIL PLANS AND TOWN COMMENTS
6	APR 5, 2016	GO	PER OWNER'S COMMENTS (NO PLANTINGS ON REAR BERM)
5	MAR 22, 2016	GO	PER OWNER'S COMMENTS (SHRUBS ON BERM / NO TREES)
4	MAR 21, 2016	GO	PER SITE PLAN CHANGES
3	MAR 18, 2016	GO	PER SITE PLAN CHANGES AND TOWN COMMENTS
2	JUL 9, 2015	GO	PER OWNER'S COMMENTS
1	JUL 8, 2015	GO	PER OWNER'S COMMENTS

DESIGN	GO	CHKD	GO	DATE
DRAWN	AFC	CHKD		JULY 2, 2015



ArborFront Consulting
 7212 Danton Promenade
 Mississauga, Ontario L5N 5C4
 Tel: 905-756-4611
 E-mail: go@arborfront.com
 Web: www.arborfront.com

TOWN OF CALEDON
 REGIONAL MUNICIPALITY OF PEEL
Temp. Commercial Nursery & Garden Centre Development
 7904 MAYFIELD ROAD

LANDSCAPE PLAN
 PROJECT No. 15109 SHEET No. L-1 OF 3

PLANT LIST

Key	Quantity	Botanical Name	Common Name	Native Specie (✓)	Caliper (mm)	Height (cm)	Spread (cm)	Root	Spacing O.C. (m)	Remarks
DECIDUOUS TREES										
PCB	3	<i>Pyrus calleryana</i> 'Bradford'	Bradford Pear	✓	50			W.B.	see plan	single straight trunk (s.s.t.), full crown
AR	3	<i>Acer rubrum</i>	Red Maple	✓	70			W.B.	see plan	single straight trunk, full crown (f.c.)
GD	2	<i>Gymnocladia dioica</i>	Kentucky Coffee Tree	✓	70			W.B.	see plan	s.s.t., f.c.
CONIFEROUS TREES										
PG	2	<i>Picea glauca</i>	White Spruce	✓		200		W.B.	see plan	single leader, full branching
TO	2	<i>Thuja occidentalis</i>	White Cedar	✓		200		W.B.	see plan	full branching
DECIDUOUS SHRUBS										
po	9	<i>Physocarpus opulifolius</i>	Common Ninebark	✓	80			3 Gallon	1.5	
cr	20	<i>Cornus racemosa</i>	Gray Dogwood	✓	80			3 Gallon	2.5	
rt	13	<i>Rhus typhina</i>	Staghorn Sumac	✓	80			3 Gallon	see plan	
sa	48	<i>Symphoricarpos albus</i>	White Snowberry	✓	80			3 Gallon	1.2	
via	12	<i>Viburnum lentago</i>	Wayfaring Tree	✓	80			3 Gallon	2.0	
vi	20	<i>Viburnum lentago</i>	Nannyberry	✓	80			3 Gallon	2.0	
mp	24	<i>Myrica pensylvanica</i>	Bayberry	✓	80			3 Gallon	2.0	
ra	40	<i>Rhus aromatica</i>	Fragrant Sumac	✓	80			3 Gallon	1.5	
vt	16	<i>Viburnum trilobum</i>	Highbush Cranberry	✓	80			3 Gallon	see plan	
CONIFEROUS SHRUBS										
jog	9	<i>Juniperus x media</i> 'Old Gold'	Old Gold Juniper	✓	60			3 Gallon	1.0	
js	40	<i>Juniperus sibirica</i>	Savin Juniper	✓	60			3 Gallon	1.5	
PERENNIALS										
hsd	65	<i>Hemerocallis 'Stella D'oro'</i>	Stella D'oro Daylily	✓				1 Gallon	0.5	

MAYFIELD ROAD
 (REGIONAL ROAD NO. 14)

LANDSCAPING ON MUNICIPAL BOULEVARDS:
 The applicant will be responsible to acquire the necessary utility stake out and approvals from the public utilities and/or Transportation and Works Departments prior to the installation of the landscape works on the municipal boulevard.