

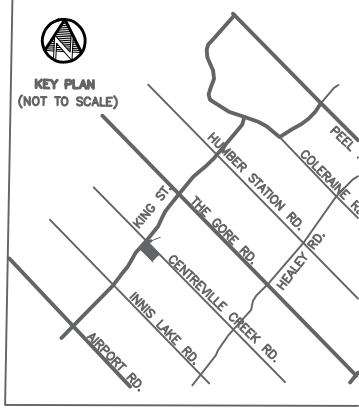
SITE STATISTICS:
 AREA OF LOT = 58,657.78 M²
 BUILDING FOOTPRINT COVERAGE = 17.16 %
 PARKING AREA:
 REGULAR PARKING = 309
 ACCESSIBLE PARKING = 14
 DROP-OFF PARKING = 6
 DELIVERY PARKING = 1
 TOTAL PARKING = 330 PARKING SPACES

PAVED AREA:
 PARKING LOT = 5,800.93 M²
 DRIVEWAYS = 9,760.78 M²
 WALKWAYS = 2,597.93 M²
 ROADS = 1,020.39 M²
 TOTAL PAVED AREA = 19,180.03 M²
 LANDSCAPE AREA = 7,368.19 M²
 VACANT LAND(east part) = 29,164.91 M²

TOPOGRAPHIC SURVEY

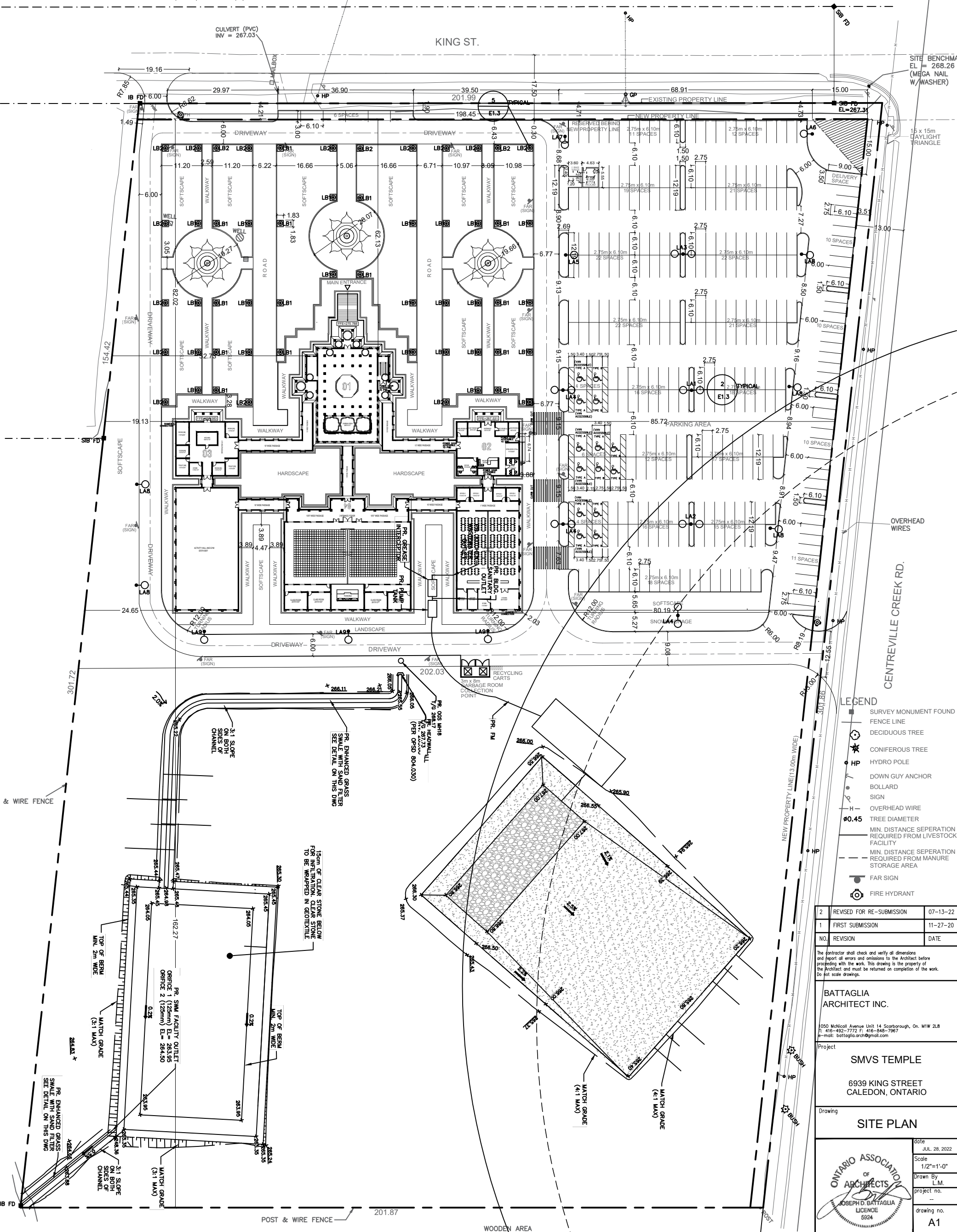
for
 6939 KING ST.
 CALEDON, ONTARIO
 SCALE: 1:500
 0 5 10 15 Metres

**TOWN OF CALEDON
 PLANNING
 RECEIVED**
 Aug 22, 2022



BUILDING PLAN:
 1. MANDIR FLOOR PLAN: 476.50 sqm (5,136 sqft)
 2. ADMIN FLOOR AREA: 831.21 sqm (9,006 sqft)
 3. SAINT ASHRAM FLOOR AREA: 831.21 sqm (9,006 sqft)
 4. SABAH HALL FLOOR AREA: 1,002.8 sqm (10,755 sqft)
 TOTAL FLOOR AREA: 3,141.72 sqm (33,903 sqft)

BOUNDARY NOTE
 PROPERTY BOUNDARY LINES SHOWN HEREON ARE FOR REFERENCE PURPOSE ONLY, COMPILED FROM EXISTING R-plan 43R-33132.
DATUM
 UTM-17 NAD83 2010.0 (ESTABLISHED BY RTK GPS AND VERIFIED WITH TWO COSINE HORIZONTAL CONTROL MONUMENTS : 04219920179 & 04219900040)
BENCH MARK
 ELEVATIONS SHOWN HERE ARE REFERRED TO A COSINE BENCHMARK No. 00819758057 HAVING AN ELEVATION OF 251.929 Metres.
METRIC
 DISTANCES AND COORDINATES SHOWN ON THIS PLAN ARE IN METRES AND CAN BE CONVERTED TO FEET BY DIVIDING BY 0.3048.



LEGEND

- SURVEY MONUMENT FOUND
- FENCE LINE
- DECIDUOUS TREE
- CONIFEROUS TREE
- HYDRO POLE
- DOWN GUY ANCHOR
- BOLLARD
- SIGN
- OVERHEAD WIRE
- 00.45 TREE DIAMETER
- MIN. DISTANCE SEPARATION REQUIRED FROM LIVESTOCK FACILITY
- MIN. DISTANCE SEPARATION REQUIRED FROM MANURE STORAGE AREA
- FAR SIGN
- FIRE HYDRANT

2	REVISED FOR RE-SUBMISSION	07-13-22
1	FIRST SUBMISSION	11-27-20
NO.	REVISION	DATE

The contractor shall check and verify all dimensions and report all errors and omissions to the Architect before proceeding with the work. This drawing is the property of the Architect and must be returned on completion of the work. Do not scale drawings.

BATTAGLIA ARCHITECT INC.
 1050 McNicoll Avenue Unit 14 Scarborough, On. M1W 2L8
 T: 416-492-7772 F: 416-548-7967
 e-mail: battaglia.arch@gmail.com

Project
SMVS TEMPLE
 6939 KING STREET
 CALEDON, ONTARIO

Drawing
SITE PLAN

date JUL. 28, 2022
 Scale 1/2"=1'-0"
 Drawn By L.M.
 Project no. -
 drawing no. A1