

TOWN OF CALEDON					APRD	B.B.	DATE	AUGUST 17
TREE PRESERVATION STANDARD NOTES - PART 1					DRAWN	B.M.	SCALE	NTS
					STANDARD No. 710			

TOWN OF CALEDON					APRD	B.B.	DATE	AUGUST 17
TREE PRESERVATION STANDARD NOTES - PART 2					DRAWN	B.M.	SCALE	NTS
					STANDARD No. 711			

TOWN OF CALEDON					APRD	B.B.	DATE	AUGUST 17
TREE PRESERVATION STANDARD NOTES - PART 2					DRAWN	B.M.	SCALE	NTS
					STANDARD No. 711			

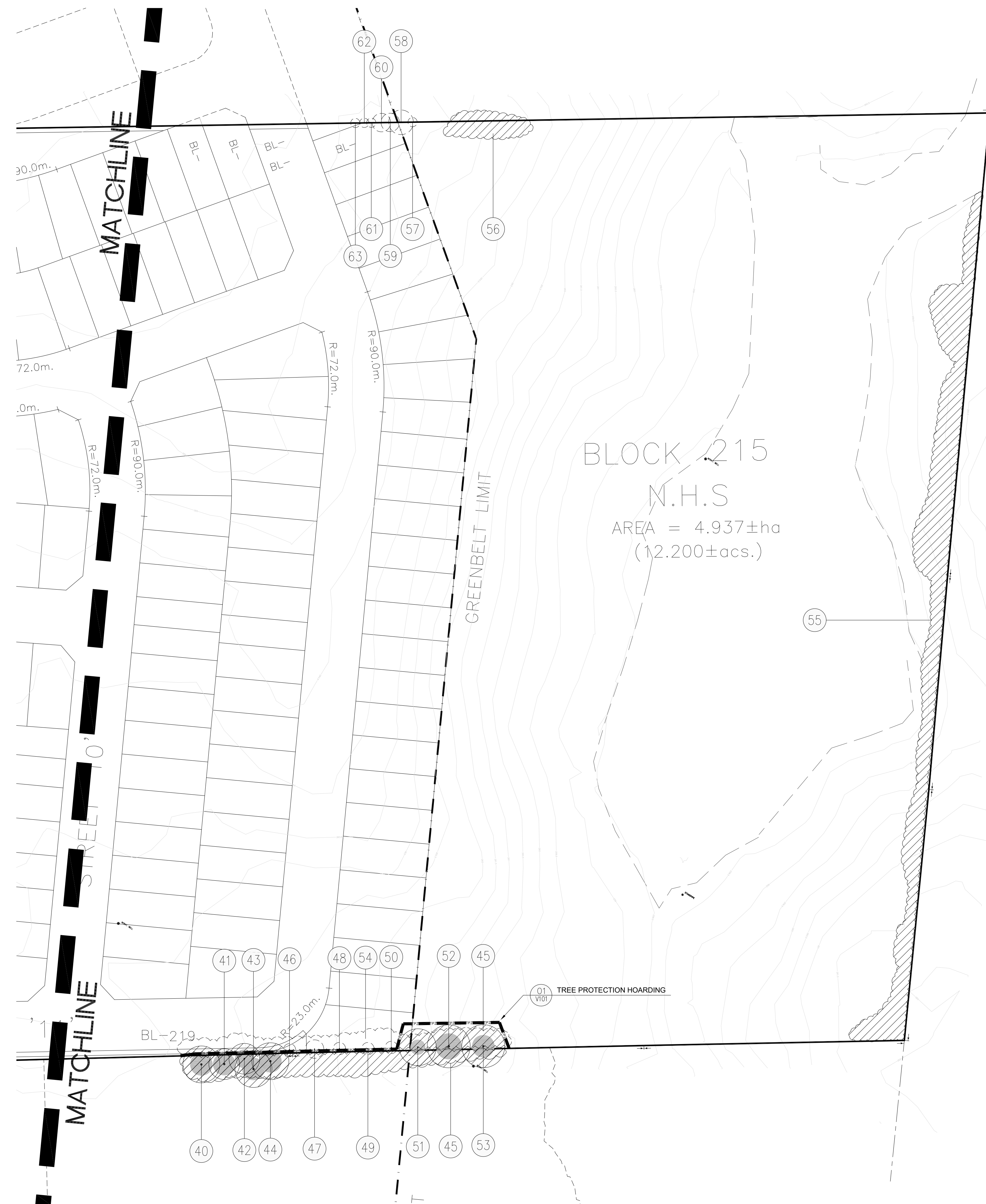
TOWN OF CALEDON					APRD	B.B.	DATE	AUGUST 17
TREE PRESERVATION STANDARD NOTES - PART 2					DRAWN	B.M.	SCALE	NTS
					STANDARD No. 711			

TOWN OF CALEDON					APRD	B.B.	DATE	AUGUST 17
TREE PRESERVATION STANDARD NOTES - PART 2					DRAWN	B.M.	SCALE	NTS
					STANDARD No. 711			

TOWN OF CALEDON					APRD	B.B.	DATE	AUGUST 17
TREE PRESERVATION STANDARD NOTES - PART 2					DRAWN	B.M.	SCALE	NTS
					STANDARD No. 711			

TOWN OF CALEDON					APRD	B.B.	DATE	AUGUST 17
TREE PRESERVATION STANDARD NOTES - PART 2					DRAWN	B.M.	SCALE	NTS
					STANDARD No. 711			

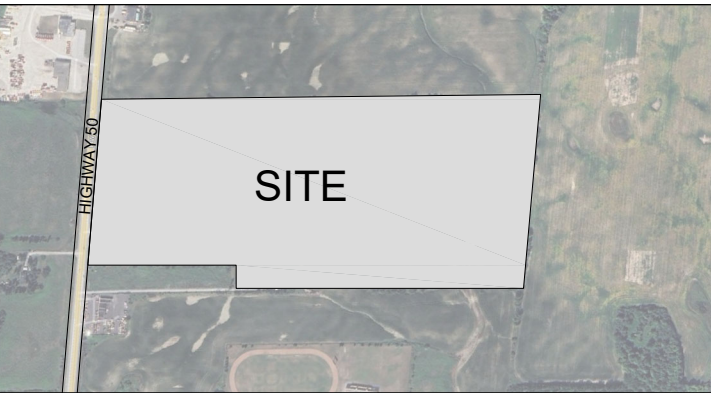
KEY	SPECIES	DSH (cm)	CROWN (m)	HEALTH G/F/P	STRUCTURE	COMMENTS	OWNERSHIP	PRESERVATION DIRECTION	MIN. TPZ (m)	KEY
040	Malus	31,34,37 (59)	12	Poor	Multi-Stem	Crowded by adjacent tree, 3 stems, union at base, major decay, epicormic growth, declining	Neighbour	Preserve	3.6	040
041	Basswood	60	10	Poor	Irregular	Crowded by adjacent tree, major decay, broken branch, decay in trunk	Neighbour	Preserve	3.6	041
042	Basswood	41	10	Poor	Double-Leader	Crowded by adjacent tree, broken branches, major deadwood	Neighbour	Preserve	3.0	042
043	Basswood	21,25,33,38 (60)	12	Poor	Multi-Stem	Crowded by adjacent tree, 4 stems, broken branches, fruiting bodies present, union at base	Neighbour	Preserve	3.6	043
044	Basswood	24,31,32,33 (60)	12	Poor	Multi-Stem	Crowded by adjacent tree, 5 stems, broken branches, cross branching, broken branches, declining, %50 dead	Neighbour	Preserve	3.6	044
045	Mix Vegetation	<10 (24)	varies	Poor	Group	A mix of dead ash and buckthorn	Private	Remove	1.2	045
046	Basswood	9,11,13,15 (24)	4	Fair	Multi-Stem	Crowded by adjacent tree, 4 stems, narrow form, crowded branching	Private	Remove	1.8	046
047	Basswood	22	6	Fair	High-Crown	Crowded by adjacent tree, epicormic growth	Private	Remove	1.8	047
048	Basswood	11,11 (16)	4	Poor	Multi-Stem	2 stems, narrow form	Private	Remove	1.8	048
049	Basswood	17	4	Fair	Narrow	Crowded by adjacent tree, high crown, vine entangled	Private	Remove	1.8	049
050	Basswood	17	4	Poor	Narrow	Crowded by adjacent tree, one-sided, vine entangled	Private	Remove	1.8	050
051	Manitoba Maple	35	12	Poor	One-sided	Major deadwood, double leader, crowded branches, broken branches	Private	Preserve	2.4	051
052	Basswood	11,20,34,39,45 (70)	14	Fair	Multi-Stem	5 stems, broad form, crowded branches, union at base, broken branches	Private	Preserve	4.2	052
053	Basswood	13,21,29,42 (57)	14	Fair	Multi-Stem	4 stems, broad form, union at base, crowded branches, cross branching	Private	Preserve	3.6	053
054	Basswood	10-15	varies	Fair	Group	Crowded by adjacent tree, 8 stems, high crown	Private	Remove	1.8	054
055	Mix Vegetation	<60	varies	Poor	Group	Mix of Basswood, dead Ash, Scots pine and Birch	Shared	Preserve	3.6	055
056	Buckthorn	<10	varies	Poor	Group		Shared	Preserve	1.2	056
057	Birch	11	3	Fair	Leaning	Crowded by adjacent tree	Shared	Remove	1.8	057
058	Birch	26	8	Fair	High-Crown	Crowded by adjacent tree, crowded branching, minor deadwood	Shared	Remove	1.8	058
059	Birch	22	6	Poor	Narrow	Crowded by adjacent tree, %50 dead, leaning, declining	Shared	Remove	1.8	059
060	Birch	26	6	Poor	Narrow	Crowded by adjacent tree, %50 dead, major deadwood	Shared	Remove	1.8	060
061	Birch	12	3	Poor	One-sided	Crowded by adjacent tree, broken branches	Shared	Remove	1.8	061
062	Birch	12	3	Poor	One-sided	Crowded by adjacent tree, dieback in crown, broken branches	Shared	Remove	1.8	062
063	Birch	12	3	Poor	Leaning	Crowded by adjacent tree, irregular form, broken branches	Shared	Remove	1.8	063



GENERAL NOTES

- VERIFY ALL DIMENSIONS.
- DO NOT SCALE DRAWINGS.
- REPORT ANY DISCREPANCIES, DISCOVERED ERRORS, OR OMISSIONS TO THE LANDSCAPE ARCHITECT BEFORE PROCEEDING.
- IT IS ADVISED THAT CONTRACTORS CONTACT THE LANDSCAPE ARCHITECT PRIOR TO CONSTRUCTION TO ENSURE THE USE OF THE LATEST REVISED DRAWINGS.
- DRAWINGS AND SPECIFICATIONS ARE THE PROPERTY OF THE LANDSCAPE ARCHITECT.

KEYMAP



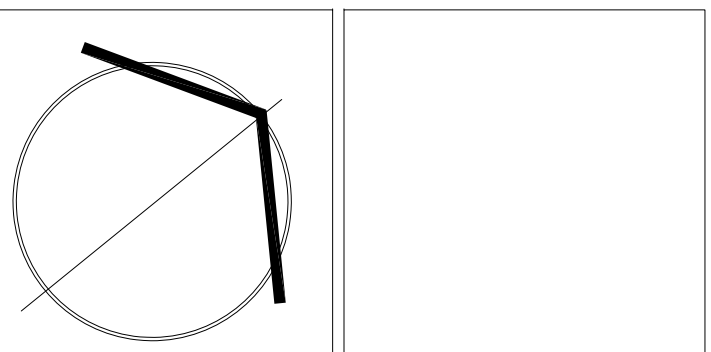
LEGEND

- TREE PROTECTION HOARDING
- EXISTING TREES TO BE PRESERVED
- MINIMUM TREE PROTECTION ZONE (TPZ) TREES TO BE PRESERVED
- EXISTING TREES TO BE REMOVED
- MINIMUM TREE PROTECTION ZONE (TPZ)
- VEGETATION NUMBER KEY
- EXISTING TREE GROUPINGS TO BE PRESERVED
- EXISTING TREE GROUPINGS TO BE REMOVED

Matthew Gehres
MATTHEW C. GEHRES
 International Society of Arboriculture
 Certified Arborist #0N-1144
 Date: 9th APRIL 2026

No.	DATE	REVISION	BY
2	APR. 15, 2026	ISSUED FOR SUBMISSION	M.G.
1	APR. 10, 2026	ISSUED FOR REVIEW	M.G.

It is the responsibility of the Contractor and/or Owner to ensure that the drawings with the latest revisions are used for construction.



SBK 5770 HURONTARIO STREET, SUITE 320
 MISSISSAUGA, ONTARIO, L5R 3G5
 T: 416.695.4949 F: 905.712.3101
 WWW.STRVBOS.COM

STRVBOS BARRON KING
 LANDSCAPE ARCHITECTURE

PROJECT:
14337 HIGHWAY 50, PART 1
BOLTON NORTH HILL
LANDOWNERS GROUP
 VILLAGE OF BOLTON, TOWN OF CALEDON
 ONTARIO

DRAWING TITLE:
TREE INVENTORY AND PRESERVATION PLAN

SCALE:	1:750	PROJECT No.	6206
DATE:	APRIL 2026	DRAWN BY:	A.S.M.
DRAWN BY:	A.S.M.	CHECKED BY:	M.G.
CHECKED BY:	M.G.	DRAWING No.	V101