



CONTEXT PLAN

SCALE - 1:2000

EXISTING TREE INVENTORY

KEY	SPECIES	DSH (m)	CROWN (m)	HEALTH G/F/P	STRUCTURE	COMMENTS	OWNERSHIP	PRESERVATION DIRECTION	MIN. TPZ (m)	KEY
001	Birch	35	6	DEAD			Neighbour	Preserve	2.4	001
002	Birch	16	4	Fair	Irregular	Crowded by adjacent tree, epicormic growth, crowded branches	Private	Remove	1.8	002
003	Scots Pine	49	8	Good	Irregular	Dieback in lower branches, minor deadwood, broken branches	Neighbour	Preserve	3.0	003
004	Willow	5,7,8,8 (14)	3	Poor	Multi-Stem	Union at base, 4 stems, crowded branches, epicormic growth, included bark	Private	Remove	1.8	004
005	Scots Pine	43	8	Good	Irregular	Branching to grade, minor deadwood	Neighbour	Preserve	3.0	005
006	Willow	7,7,7 (12)	4	Poor	Multi-Stem	3 stems, crowded branching, declining	Private	Remove	1.8	006
007	Ash	14	3	Poor	Multi-Leader	Declining, major decay in trunk	Private	Remove	1.8	007
008	Scots Pine	37	8	Good	Irregular	Branching to grade, crowded branching	Neighbour	Preserve	2.4	008
009	Scots Pine	31	8	Fair	Irregular	Branching to grade, minor deadwood, broken branches	Neighbour	Preserve	2.4	009
010	Austrian Pine	41	8	Fair	Irregular	Branching to grade, broken branches, leaning	Neighbour	Preserve	3.0	010
011	Austrian Pine	37	8	Fair	Leaning	Branching to grade, broken branches, dieback in crown	Neighbour	Preserve	2.4	011
012	Scots Pine	11	3	Good	Symmetrical	Good form	Private	Remove	1.8	012
013	Austrian Pine	21,39	8	Good	Multi-Stem	2 stems, union at base, branching to grade, crowded by adjacent tree	Neighbour	Preserve	3.0	013
014	Austrian Pine	32	8	Fair	Irregular	Crowded by adjacent tree, branching to grade, dieback in crown	Neighbour	Preserve	2.4	014
015	Austrian Pine	46	8	Good	Irregular	Crowded by adjacent tree, branching to grade, double leader	Neighbour	Preserve	3.0	015
016	Austrian Pine	38	8	Fair	Irregular	Crowded by adjacent tree, branching to grade, dieback in lower branches, double leader	Neighbour	Preserve	2.4	016
017	Austrian Pine	45	8	Fair	Double-Leader	Crowded by adjacent tree, broken branches, dieback in crown	Neighbour	Preserve	3.0	017
018	Austrian Pine	38	8	Fair	Multi-Leader	Crowded by adjacent tree, broken branches, dieback in lower branches	Neighbour	Preserve	2.4	018
019	Scots Pine	25	6	Fair	Leaning	Crowded by adjacent tree, broken branches, dieback in lower branches, vine entangled	Neighbour	Preserve	1.8	019
020	Scots Pine	28	6	Fair	One-sided	Crowded by adjacent tree, minor deadwood	Neighbour	Preserve	1.8	020
021	Austrian Pine	38	8	Poor	High-Crown	Dieback in lower branches, broken branches	Neighbour	Preserve	2.4	021
022	Manitoba Maple	10	4	Fair	Irregular	Crowded branching	Private	Remove	1.8	022
023	Mix Vegetation	<15	varies	Poor	Group	Majority dead ash trees, 1-50% dead malus trees (28 DSH)	Private	Remove	1.8	023
024	White Pine	48	10	Fair	Irregular	Crowded by adjacent tree, adjacent to house, dieback in lower branches	Neighbour	Preserve	3.0	024
025	White Pine	46	10	Fair	Irregular	Crowded by adjacent tree, adjacent to house, dieback in lower branches	Neighbour	Preserve	3.0	025
026	White Cedar	<10	varies	Fair	varies	Hedge along adjacent property limit, adjacent to house	Neighbour	Preserve	1.8	026
027	Mulberry	15,23,23,25 (44)	6	Poor	Multi-Stem	4 Stems, major epicormic growth, branching to grade, crowded branching	Private	Remove	3.0	027
028	Willow	13	3	Fair	Irregular	Epicormic growth, crowded branching	Private	Remove	1.8	028
029	Mulberry	14,19,26 (35)	6	Poor	Multi-Stem	3 stems, major epicormic growth, branching to grade, crowded branching	Private	Remove	2.4	029
030	Birch	12,13 (18)	5	DEAD	Irregular	2 stems, major epicormic growth, leaning	Private	Remove	1.8	030
031	Emerald Cedar	8,8,9,10,11 (21)	2	Good	Columnar	5 stems, multi leader form	Private	Remove	1.8	031
032	Ash	18,21,25 (37)	varies	DEAD	Group	3 stems	Private	Remove	2.4	032
033	Pussy Willow	<18	8	Poor	Hedge	6 stems, crowded branching, decay in trunk	Private	Remove	1.8	033
034	Ash	24,27 (36)	varies	DEAD	Group	2 stems	Private	Remove	2.4	034
035	Birch	<12	varies	Good	Group	A group of saplings	Neighbour	Preserve	1.8	035
036	Ash	<20	varies	DEAD	Group	9 stems	Private	Remove	1.8	036
037	Birch	24	8	Poor	Irregular	Crowded by adjacent tree, decay at base, declining	Private	Remove	1.8	037
038	Birch	24	8	Fair	High-Crown	Crowded by adjacent tree, broken branches, double leader	Private	Remove	1.8	038
039	Siberian Elm	<18	varies	Fair	Group	Crowded by adjacent tree, 6 stems (DSH 8,12,12,16,18,14), vine entangled, major decay, asphalt at base	Private	Remove	1.8	039
064	Buckthorn	<10	varies	Poor	Group		Shared	Remove	1.2	064
065	Silver Maple	62	12	Poor	Multi-leader	Broken leader, declining, major decay in trunk, epicormic growth, branching to grade	Shared	Remove	4.2	065
066	Buckthorn	<10	varies	Poor	Group		Shared	Remove	1.8	066
067	Russian Olive	7,12,13 (19)	8	Poor	Multi-Stem	3 stems, epicormic growth, included bark, union at base	Region	Remove	2.4	067

GENERAL NOTES

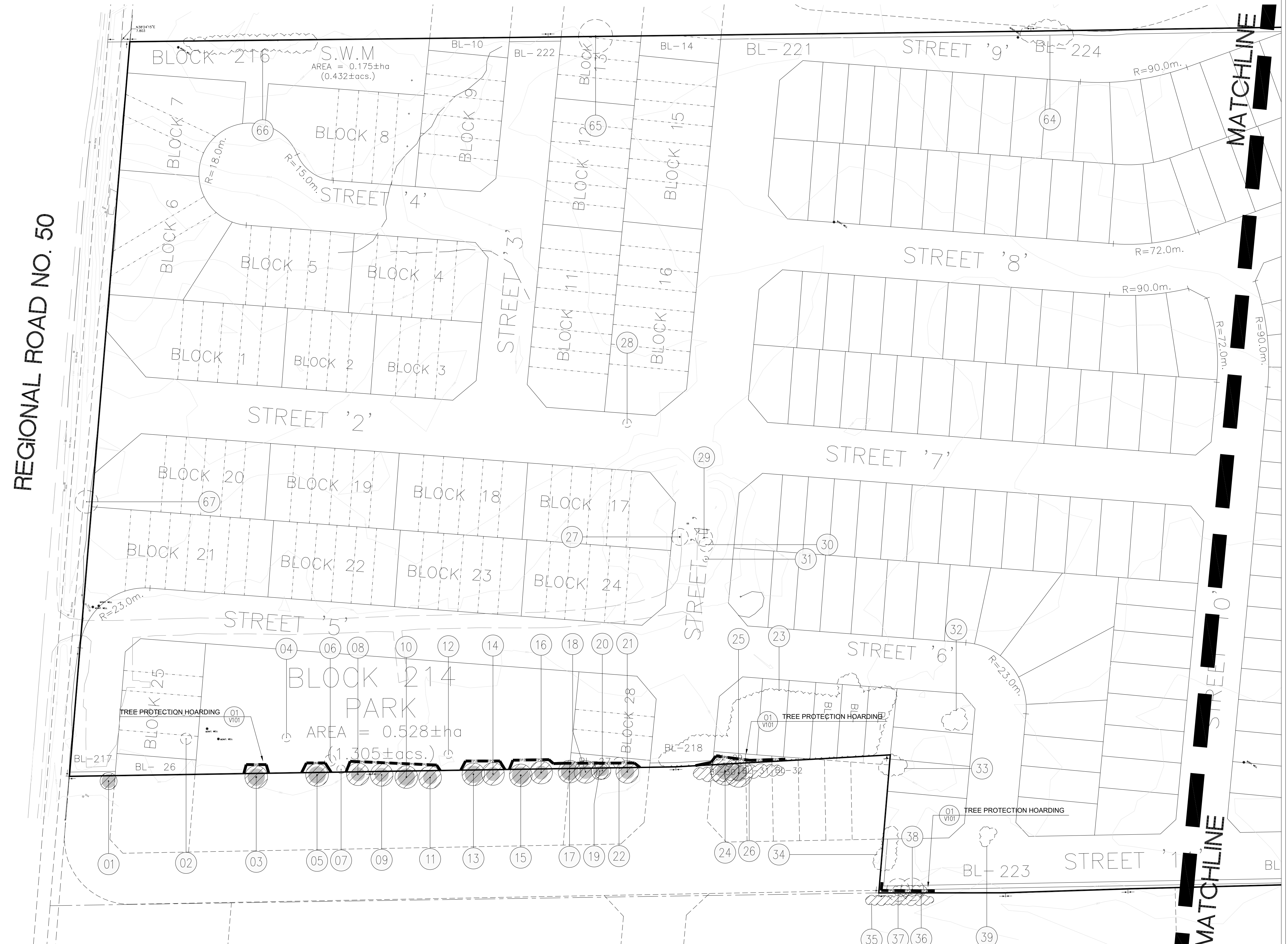
- VERIFY ALL DIMENSIONS.
- DO NOT SCALE DRAWINGS.
- REPORT ANY DISCREPANCIES, DISCOVERED ERRORS, OR OMISSIONS TO THE LANDSCAPE ARCHITECT BEFORE PROCEEDING.
- IT IS ADVISED THAT CONTRACTORS CONTACT THE LANDSCAPE ARCHITECT PRIOR TO CONSTRUCTION TO ENSURE THE USE OF THE LATEST REVISED DRAWINGS.
- DRAWINGS AND SPECIFICATIONS ARE THE PROPERTY OF THE LANDSCAPE ARCHITECT.

KEYMAP



LEGEND

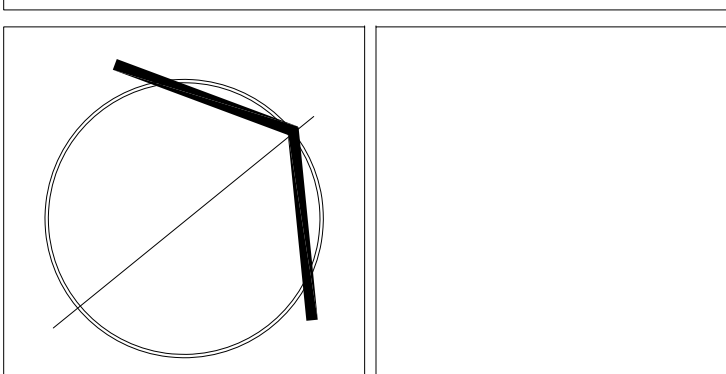
- TREE PROTECTION HOARDING
- EXISTING TREES TO BE PRESERVED
- MINIMUM TREE PROTECTION ZONE (TPZ) TREES TO BE PRESERVED
- EXISTING TREES TO BE REMOVED
- MINIMUM TREE PROTECTION ZONE (TPZ)
- VEGETATION NUMBER KEY
- EXISTING TREE GROUPINGS TO BE PRESERVED
- EXISTING TREE GROUPINGS TO BE REMOVED



Matthew C. Gehring
MATTHEW C. GEHRING
International Society of Arboriculture
Certified Arborist #ON-1114A
Date: 15th APRIL 2026

No.	DATE	REVISION	BY
1	APR. 15, 2026	ISSUED FOR SUBMISSION	M.G.
2	APR. 16, 2026	ISSUED FOR REVIEW	M.G.

It is the responsibility of the Contractor and/or Owner to ensure that the drawings with the latest revisions are used for construction.



SBK
STRYBOS BARRON KING
LANDSCAPE ARCHITECTURE

PROJECT:
14337 HIGHWAY 50, PART 1
BOLTON NORTH HILL
LANDOWNERS GROUP
VILLAGE OF BOLTON, TOWN OF CALEDON
ONTARIO

DRAWING TITLE:
TREE INVENTORY AND
PRESERVATION PLAN

SCALE:	1:750	PROJECT No.
DATE:	APRIL 2026	6206
DRAWN BY:	A.S.M.	DRAWING No.
CHECKED BY:	M.G.	V100