

TOWN OF CALEDON
PLANNING
RECEIVED

Oct. 22, 2024

15441 Mount Pleasant Road, Caledon

Version 1.2

September 2024

Arborist Report



Prepared For:
2818963 Ontario Inc.

Prepared By:
Sumac Environmental Consulting



Sumac Environmental Consulting
200 Muirfield Drive, Barrie Ontario, L4N 6K7
(249) 880-4676
sumacenvironmental@gmail.com
www.sumacenvironmental.ca

September 5, 2024

SEC 22-015

2818963 Ontario Inc.
52 Pleasant Valley Place
Brampton, Ontario
L6S 5S1

Re: **Arborist Report at 15441 Mount Pleasant Road, Caledon**

To whom it may concern,

Thank you for retaining Sumac Environmental Consulting to prepare an Arborist Report at 15441 Mount Pleasant Road, Caledon for a proposed development that supports the construction of a residential subdivision.

A tree inventory was completed on April 10 and April 16 of 2024 to identify existing trees and evaluate the extent of tree preservation, injury and/or removal required as a result of the proposed site works. The diameter at breast height was measured at 1.4 m above ground for all inventoried trees. This Arborist Report summarizes the findings of the tree inventory and provides recommendations for tree preservation. This report was prepared for 2818963 Ontario Inc. and the undersigned accepts no responsibility for future use by other parties.

We thank you for the opportunity to be part of this project and should you have any questions, please do not hesitate to contact the undersigned.

Sumac Environmental Consulting

A handwritten signature in black ink, appearing to read "C Fligg".

Cassandra Fligg, M.Sc.
ISA Certified Arborist
Certification ID: ON-2527A

A handwritten signature in black ink, appearing to read "Nathan Fligg".

Nathan Fligg, M.Sc.
Environmental Consultant

Table of Contents

1.0	Introduction	1
2.0	Policy Context	1
2.1.	Provincial.....	1
2.1.1.	Endangered Species Act.....	1
2.1.2.	Provincial Policy Statement.....	2
2.1.3.	Provincial Planning Statement	2
2.2.	Municipal.....	2
2.2.1.	Region of Peel Official Plan.....	2
2.2.2.	Town of Caledon Official Plan.....	3
2.2.3.	Town of Caledon Woodland Conservation By-law 2000-100.....	3
3.0	Methodology.....	3
3.1.	Tree Inventory	3
3.2.	Hazard Tree	4
3.3.	Species at Risk.....	4
4.0	Results	4
4.1.	Tree Inventory	4
4.1.1.	Hazard Tree	31
4.1.2.	Species at Risk.....	31
4.2.	Tree Preservation.....	32
4.3.	Tree Injury	32
4.4.	Tree Removal	32
5.0	Conclusion	32
6.0	Recommendations	32
6.1.	Compensation.....	32
6.2.	Excavation	33
6.3.	Fertilization.....	33
6.4.	Irrigation.....	33
6.5.	Monitoring.....	33
6.6.	Root Zone Aeration	33

6.7. Sensitive Timing Window 33
6.8. Tree Preservation 34
6.9. Tree Removal 34
7.0 References 34

List of Figures

- Figure 1: Subject Property
- Figure 2: Tree Inventory and Preservation Plan

1.0 Introduction

Sumac Environmental Consulting (Sumac) was retained to prepare an Arborist Report at 15441 Mount Pleasant Road, Caledon (Figure 1) for a proposed development that supports the construction of a residential subdivision.

An Arborist Report has been prepared to address the current condition of all trees with a diameter at breast height (DBH) measuring equal to and greater than 10 cm located in the Area of Work and up to 6 m of the adjacent lands. A tree preservation plan identifying trees to be injured, removed and preserved is included in this report, as well as, general recommendations. This work has been conducted in general accordance with the Town of Caledon Terms of Reference: Tree Preservation guidance document.

2.0 Policy Context

2.1. Provincial

2.1.1. Endangered Species Act

Ontario's *Endangered Species Act* (ESA) provides protection, designation, recovery and other relevant aspects of conservation for species at risk, including habitat protection in the Province.

As per Section 9 (1) of the ESA, no person shall

- a. kill, harm, harass, capture or take a living member of a species that is listed on the Species at Risk in Ontario List as an extirpated, endangered or threatened species;
- b. possess, transport, collect, buy, sell, lease, trade or offer to buy, sell, lease or trade,
 - (i) a living or dead member of a species that is listed on the Species at Risk in Ontario List as an extirpated, endangered or threatened species,
 - (ii) any part of a living or dead member of a species referred to in subclause (i),
 - (iii) anything derived from a living or dead member of a species referred to in subclause (i); or
- c. sell, lease, trade or offer to sell, lease or trade anything that the person represents to be a thing described in subclause (b) (i), (ii) or (iii). 2007, c. 6, s. 9 (1).

As per Section 10 (1) of the ESA, no person shall damage or destroy the habitat of,

- a. a species that is listed on the Species at Risk in Ontario List as an endangered or threatened species; or
- b. a species that is listed on the Species at Risk in Ontario List as an extirpated species, if the species is prescribed by the regulations for the purpose of this clause. 2007, c. 6, s. 10 (1).

2.1.2. Provincial Policy Statement

The Provincial Policy Statement (MMAH, 2020) states that decisions affecting planning matters shall be consistent with policy statements issues under the *Planning Act*.

As per Section 2.1.5 of the PPS, development and site alteration shall not be permitted in significant woodlands in Ecoregions 6E unless it has been demonstrated that there will be no negative impacts on the natural features or their ecological functions.

As per Section 2.1.7 of the PPS, development and site alteration shall not be permitted in habitat of endangered species and threatened species, except in accordance with provincial and federal requirements.

As per Section 2.1.8 of the PPS, development and site alteration shall not be permitted on adjacent lands to the natural heritage features and areas identified in policies 2.1.5 unless the ecological function of the adjacent lands has been evaluated and it has been demonstrated that there will be no negative impacts on the natural features or on their ecological functions.

2.1.3. Provincial Planning Statement

The Provincial Planning Statement was issued under section 3 of the *Planning Act* and comes into effect on October 20, 2024. It replaces the PPS that came into effect on May 1, 2020.

As per Section 4.1.5 of the Provincial Planning Statement, development and site alteration shall not be permitted in significant woodlands in Ecoregions 6E and 7E (excluding islands in Lake Huron and the St. Marys River) unless it has been demonstrated that there will be no negative impacts on the natural features or their ecological functions.

As per Section 4.1.8 of the Provincial Planning Statement, development and site alteration shall not be permitted on adjacent lands to the natural heritage features and areas identified in policies 4.1.5 unless the ecological function of the adjacent lands has been evaluated and it has been demonstrated that there will be no negative impacts on the natural features or on their ecological functions.

2.2. Municipal

2.2.1. Region of Peel Official Plan

As per Section 2.3.3 of the Region of Peel Official Plan (office consolidation 2022), it is policy of the plan to protect, maintain, restore and enhance the quality and ecological integrity of

ecosystems, including air, water, land and biota jointly with the local municipalities, conservation authorities, federal and provincial agencies.

2.2.2. Town of Caledon Official Plan

As per Section 5.1.1.18.1 of the Town of Caledon Official Plan (office consolidation 2024), it is the policy of the Town that the retention of all woodlands be encouraged. Any tree removal or maintenance of a woodland shall be in accordance with this Plan, conducted under good forestry practices, and in accordance with the provisions of the Town of Caledon's Woodland Conservation By-law.

2.2.3. Town of Caledon Woodland Conservation By-law 2000-100

As per Section 7.1.1 of the Town of Caledon Woodland Conservation By-law 2000-100 (2004), a permit for the destruction of trees shall not be required where the destruction of trees is for the personal use of the owner, not including a sale, exchange or other disposition of the trees that are cut, provided that no more than twenty (20) trees are to be destroyed in any 12 month period, and the trees are destroyed in accordance with good forestry practice, and will not reduce the number of trees in the woodland below the minimum number of trees necessary to constitute a woodland.

As per Section 7.1.4 of the Town of Caledon Woodland Conservation By-law 2000-100 (2004), a permit to destroy a tree shall not be issued to the owner when the tree is an endangered species as defined in the Endangered Species Act, R.S.O. 1990, c. E. A permit to destroy a tree shall not be issued to the owner when flood or erosion control, or the ecological integrity of the woodland, will be negatively affected as determined by the staff of the Ministry of Natural Resources, conservation authority, forestry consultant, or other officials as may be consulted by the director. A permit to destroy a tree shall not be issued to the owner when the destruction of trees will not be in accordance with good forestry practices as determined by a forestry consultant or an Officer.

3.0 Methodology

3.1. Tree Inventory

A tree inventory was completed on April 10 and April 16 of 2024 to gain a better understanding of tree composition and quality in the Area of Work. A visual inspection of all tree individuals was completed to determine their general condition, with regard for the following items:

- Structural integrity and form
- Deadwood
- Vigour
- Infections
- Pathological concerns

- Fungal fruiting bodies
- Decay

3.2. Hazard Tree

A hazard tree can be defined as one for which the risk of mechanical failure and resulting damage is greater than the benefit provided by the tree. Trees were assessed for the potential of exhibiting hazard potential as described above.

3.3. Species at Risk

Inventoried trees were reviewed for their Species at Risk (SAR) status as per O. Reg. 230/08.

4.0 Results

4.1. Tree Inventory

The tree inventory included 1004 trees (see table below).

Tree ID	Tag No.	Scientific Name	Common Name	DBH (cm)	Health	Recommendation
1	1	Bur Oak	<i>Quercus macrocarpa</i>	10	Fair	Remove
2	2	White Spruce	<i>Picea glauca</i>	11	Good	Remove
3	3	European Buckthorn	<i>Rhamnus cathartica</i>	17	Fair	Remove
4	4	Bur Oak	<i>Quercus macrocarpa</i>	10	Fair	Remove
5	5	Paper Birch	<i>Betula papyrifera</i>	29,29,13,12,12,8	Poor	Remove
6	6	White Spruce	<i>Picea glauca</i>	34	Good	Remove
7	7	Red Ash	<i>Fraxinus pennsylvanica</i>	11	Poor	Remove
8	8	White Spruce	<i>Picea glauca</i>	33	Good	Remove
9	9	White Spruce	<i>Picea glauca</i>	17	Good	Remove
10	10	White Spruce	<i>Picea glauca</i>	21	Fair	Remove
11	11	White Spruce	<i>Picea glauca</i>	16	Good	Remove
12	12	White Spruce	<i>Picea glauca</i>	11	Fair	Remove
13	12	Scots Pine	<i>Pinus sylvestris</i>	12	Good	Remove
14	13	White Spruce	<i>Picea glauca</i>	19	Good	Remove
15	14	White Spruce	<i>Picea glauca</i>	29	Good	Remove
16	15	White Spruce	<i>Picea glauca</i>	18	Good	Remove
17	16	White Spruce	<i>Picea glauca</i>	24	Good	Remove
18	17	White Spruce	<i>Picea glauca</i>	24	Good	Remove

19	18	White Spruce	<i>Picea glauca</i>	20	Fair	Remove
20	19	Silver Maple	<i>Acer saccharinum</i>	36	Good	Remove
21	20	White Spruce	<i>Picea glauca</i>	36	Good	Preserve
22	21	White Spruce	<i>Picea glauca</i>	24	Good	Remove
23	22	White Spruce	<i>Picea glauca</i>	34	Good	Remove
24	23	Austrian Pine	<i>Pinus nigra</i>	42	Good	Remove
25	24	Austrian Pine	<i>Pinus nigra</i>	42	Good	Remove
26	25	Austrian Pine	<i>Pinus nigra</i>	43	Good	Remove
27	26	Austrian Pine	<i>Pinus nigra</i>	38	Good	Remove
28	27	White Spruce	<i>Picea glauca</i>	25	Good	Remove
29	28	White Spruce	<i>Picea glauca</i>	18	Good	Remove
30	29	Eastern White Cedar	<i>Thuja occidentalis</i>	26	Good	Remove
31	30	Eastern White Cedar	<i>Thuja occidentalis</i>	34	Good	Remove
32	31	Paper Birch	<i>Betula papyrifera</i>	25	Fair	Remove
33	32	Eastern White Cedar	<i>Thuja occidentalis</i>	13	Good	Remove
34	33	Scots Pine	<i>Pinus sylvestris</i>	22	Good	Remove
35	34	White Spruce	<i>Picea glauca</i>	29	Good	Remove
36	35	White Spruce	<i>Picea glauca</i>	23	Good	Remove
37	36	White Spruce	<i>Picea glauca</i>	26	Good	Remove
38	36	White Spruce	<i>Picea glauca</i>	10	Dead	Remove
39	38	White Spruce	<i>Picea glauca</i>	32	Good	Remove
40	39	Silver Maple	<i>Acer saccharinum</i>	43	Good	Remove
41	40	Eastern White Cedar	<i>Thuja occidentalis</i>	22	Good	Remove
42	41	Eastern White Cedar	<i>Thuja occidentalis</i>	16,15	Good	Remove
43	42	Trembling Aspen	<i>Populus tremuloides</i>	12	Good	Remove
44	43	Trembling Aspen	<i>Populus tremuloides</i>	26,26	Fair	Remove
45	44	Unknown Sp.	<i>Unknown sp.</i>	16	Dead	Remove
46	45	Trembling Aspen	<i>Populus tremuloides</i>	24	Good	Remove
47	46	Trembling Aspen	<i>Populus tremuloides</i>	34	Fair	Remove
48	47	White Spruce	<i>Picea glauca</i>	16	Poor	Remove
49	48	Silver Maple	<i>Acer saccharinum</i>	13	Fair	Remove
50	49	Silver Maple	<i>Acer saccharinum</i>	27	Fair	Remove
51	50	Basswood	<i>Tilia americana</i>	36,27	Fair	Remove
52	51	Trembling Aspen	<i>Populus tremuloides</i>	24	Poor	Remove
53	52	Trembling Aspen	<i>Populus tremuloides</i>	13	Fair	Remove
54	53	White Spruce	<i>Picea glauca</i>	12	Good	Remove
55	54	Trembling Aspen	<i>Populus tremuloides</i>	31	Good	Remove

56	55	White Spruce	<i>Picea glauca</i>	20	Good	Remove
57	56	Trembling Aspen	<i>Populus tremuloides</i>	25	Good	Remove
58	57	White Spruce	<i>Picea glauca</i>	19	Good	Remove
59	58	Trembling Aspen	<i>Populus tremuloides</i>	27	Good	Remove
60	59	Trembling Aspen	<i>Populus tremuloides</i>	22	Good	Remove
61	60	Trembling Aspen	<i>Populus tremuloides</i>	18	Good	Remove
62	61	White Spruce	<i>Picea glauca</i>	28	Good	Remove
63	62	Trembling Aspen	<i>Populus tremuloides</i>	24	Good	Remove
64	63	White Spruce	<i>Picea glauca</i>	27	Good	Remove
65	64	White Spruce	<i>Picea glauca</i>	41	Good	Remove
66	65	Trembling Aspen	<i>Populus tremuloides</i>	2	Good	Remove
67	66	Trembling Aspen	<i>Populus tremuloides</i>	28	Good	Remove
68	67	Trembling Aspen	<i>Populus tremuloides</i>	38	Good	Remove
69	68	Austrian Pine	<i>Pinus nigra</i>	45	Good	Remove
70	69	Hawthorne Sp.	<i>Crataegus sp.</i>	21	Fair	Remove
71	70	Eastern White Cedar	<i>Thuja occidentalis</i>	35,32	Fair	Remove
72	71	Silver Maple	<i>Acer saccharinum</i>	42	Good	Injure
73	72	Hawthorne Sp.	<i>Crataegus sp.</i>	11	Fair	Preserve
74	73	Hawthorne Sp.	<i>Crataegus sp.</i>	15	Good	Injure
75	74	Austrian Pine	<i>Pinus nigra</i>	42	Fair	Remove
76	75	Austrian Pine	<i>Pinus nigra</i>	56	Good	Remove
77	76	Hawthorne Sp.	<i>Crataegus sp.</i>	15	Fair	Remove
78	77	Trembling Aspen	<i>Populus tremuloides</i>	34	Fair	Preserve
79	78	Trembling Aspen	<i>Populus tremuloides</i>	17	Fair	Preserve
80	79	Trembling Aspen	<i>Populus tremuloides</i>	11	Good	Preserve
81	80	Trembling Aspen	<i>Populus tremuloides</i>	10	Good	Preserve
82	81	White Spruce	<i>Picea glauca</i>	23	Good	Preserve
83	82	White Spruce	<i>Picea glauca</i>	14	Good	Preserve
84	83	Trembling Aspen	<i>Populus tremuloides</i>	18	Good	Preserve
85	84	Trembling Aspen	<i>Populus tremuloides</i>	10	Good	Preserve
86	85	Red Ash	<i>Fraxinus pennsylvanica</i>	19	Poor	Preserve
87	86	Red Ash	<i>Fraxinus pennsylvanica</i>	24	Poor	Preserve
88	87	Trembling Aspen	<i>Populus tremuloides</i>	12	Fair	Preserve
89	87	Trembling Aspen	<i>Populus tremuloides</i>	24	Fair	Preserve
90	89	White Elm	<i>Ulmus americana</i>	12	Dead	Preserve
91	90	White Spruce	<i>Picea glauca</i>	10	Dead	Preserve
92	91	Black Cherry	<i>Prunus serotina</i>	18	Good	Preserve

93	92	Silver Maple	<i>Acer saccharinum</i>	76	Fair	Preserve
94	93	Basswood	<i>Tilia americana</i>	31	Fair	Preserve
95	94	Black Cherry	<i>Prunus serotina</i>	13	Good	Preserve
96	95	Trembling Aspen	<i>Populus tremuloides</i>	26	Fair	Preserve
97	96	White Elm	<i>Ulmus americana</i>	24	Dead	Preserve
98	97	Trembling Aspen	<i>Populus tremuloides</i>	10	Good	Preserve
99	98	Trembling Aspen	<i>Populus tremuloides</i>	14	Good	Preserve
100	99	White Spruce	<i>Picea glauca</i>	16	Good	Preserve
101	100	Manitoba Maple	<i>Acer negundo</i>	20	Fair	Remove
102	101	Red Ash	<i>Fraxinus pennsylvanica</i>	11	Poor	Preserve
103	102	Trembling Aspen	<i>Populus tremuloides</i>	36	Fair	Preserve
104	103	Trembling Aspen	<i>Populus tremuloides</i>	21	Good	Preserve
105	104	Trembling Aspen	<i>Populus tremuloides</i>	18	Good	Remove
106	105	Trembling Aspen	<i>Populus tremuloides</i>	24,22,9	Fair	Remove
107	106	Trembling Aspen	<i>Populus tremuloides</i>	32	Good	Remove
108	107	Austrian Pine	<i>Pinus nigra</i>	68	Good	Injure
109	108	Austrian Pine	<i>Pinus nigra</i>	48	Good	Remove
110	109	Austrian Pine	<i>Pinus nigra</i>	40,25	Fair	Remove
111	110	Douglas Fir	<i>Pseudotsuga menziesii</i>	70	Good	Remove
112	111	Austrian Pine	<i>Pinus nigra</i>	40	Good	Remove
113	112	Douglas Fir	<i>Pseudotsuga menziesii</i>	57	Good	Remove
114	113	Austrian Pine	<i>Pinus nigra</i>	53	Good	Remove
115	114	Austrian Pine	<i>Pinus nigra</i>	57	Good	Remove
116	115	Blue Spruce	<i>Picea pungens</i>	40	Good	Remove
117	116	Austrian Pine	<i>Pinus nigra</i>	61	Good	Remove
118	117	Scots Pine	<i>Pinus sylvestris</i>	29	Dead	Remove
119	118	Scots Pine	<i>Pinus sylvestris</i>	43	Good	Remove
120	119	Scots Pine	<i>Pinus sylvestris</i>	25	Good	Preserve
121	120	Scots Pine	<i>Pinus sylvestris</i>	16	Good	Preserve
122	121	Scots Pine	<i>Pinus sylvestris</i>	22	Good	Injure
123	121	Scots Pine	<i>Pinus sylvestris</i>	21	Good	Remove
124	122	Scots Pine	<i>Pinus sylvestris</i>	13	Good	Remove
125	125	Scots Pine	<i>Pinus sylvestris</i>	33	Good	Remove
126	126	Scots Pine	<i>Pinus sylvestris</i>	25	Good	Remove
127	127	Scots Pine	<i>Pinus sylvestris</i>	19	Good	Remove
128	128	Scots Pine	<i>Pinus sylvestris</i>	22	Good	Remove
129	129	Scots Pine	<i>Pinus sylvestris</i>	24	Good	Remove

130	130	Scots Pine	<i>Pinus sylvestris</i>	12	Good	Remove
131	131	Scots Pine	<i>Pinus sylvestris</i>	18	Good	Remove
132	132	Scots Pine	<i>Pinus sylvestris</i>	18	Good	Remove
133	133	Scots Pine	<i>Pinus sylvestris</i>	15	Good	Remove
134	134	Scots Pine	<i>Pinus sylvestris</i>	12	Good	Remove
135	135	Scots Pine	<i>Pinus sylvestris</i>	29	Good	Remove
136	136	Scots Pine	<i>Pinus sylvestris</i>	11	Good	Remove
137	137	Scots Pine	<i>Pinus sylvestris</i>	10	Good	Remove
138	138	Scots Pine	<i>Pinus sylvestris</i>	15	Good	Remove
139	139	Scots Pine	<i>Pinus sylvestris</i>	12	Good	Remove
140	140	Scots Pine	<i>Pinus sylvestris</i>	16	Good	Remove
141	141	Scots Pine	<i>Pinus sylvestris</i>	14	Good	Remove
142	142	Scots Pine	<i>Pinus sylvestris</i>	12	Good	Remove
143	143	Scots Pine	<i>Pinus sylvestris</i>	17	Good	Remove
144	144	Scots Pine	<i>Pinus sylvestris</i>	13	Good	Remove
145	145	Scots Pine	<i>Pinus sylvestris</i>	10	Good	Remove
146	146	Scots Pine	<i>Pinus sylvestris</i>	16	Good	Remove
147	147	Scots Pine	<i>Pinus sylvestris</i>	13	Good	Remove
148	148	Scots Pine	<i>Pinus sylvestris</i>	10	Good	Remove
149	149	Scots Pine	<i>Pinus sylvestris</i>	14	Fair	Remove
150	150	Scots Pine	<i>Pinus sylvestris</i>	14	Good	Remove
151	151	Scots Pine	<i>Pinus sylvestris</i>	16	Good	Remove
152	152	Scots Pine	<i>Pinus sylvestris</i>	16	Good	Remove
153	153	Scots Pine	<i>Pinus sylvestris</i>	15	Good	Remove
154	154	Eastern White Pine	<i>Pinus strobus</i>	25	Good	Remove
155	155	Scots Pine	<i>Pinus sylvestris</i>	24	Good	Remove
156	156	Scots Pine	<i>Pinus sylvestris</i>	10	Good	Remove
157	157	Scots Pine	<i>Pinus sylvestris</i>	14	Good	Remove
158	158	Scots Pine	<i>Pinus sylvestris</i>	11	Good	Remove
159	159	Scots Pine	<i>Pinus sylvestris</i>	10	Good	Remove
160	160	Scots Pine	<i>Pinus sylvestris</i>	13	Good	Remove
161	161	Scots Pine	<i>Pinus sylvestris</i>	17	Good	Remove
162	162	Scots Pine	<i>Pinus sylvestris</i>	11	Good	Remove
163	163	Scots Pine	<i>Pinus sylvestris</i>	10	Good	Remove
164	164	Scots Pine	<i>Pinus sylvestris</i>	12	Good	Remove
165	165	Scots Pine	<i>Pinus sylvestris</i>	18	Good	Remove
166	166	Scots Pine	<i>Pinus sylvestris</i>	16	Good	Remove

167	167	Scots Pine	<i>Pinus sylvestris</i>	13	Good	Remove
168	168	Scots Pine	<i>Pinus sylvestris</i>	17	Good	Remove
169	169	Scots Pine	<i>Pinus sylvestris</i>	15	Good	Remove
170	170	Scots Pine	<i>Pinus sylvestris</i>	19	Good	Remove
171	171	Scots Pine	<i>Pinus sylvestris</i>	14	Good	Preserve
172	172	Scots Pine	<i>Pinus sylvestris</i>	36	Good	Preserve
173	172	Scots Pine	<i>Pinus sylvestris</i>	23	Good	Preserve
174	172	Scots Pine	<i>Pinus sylvestris</i>	14	Good	Preserve
175	173	Scots Pine	<i>Pinus sylvestris</i>	62	Good	Remove
176	176	Scots Pine	<i>Pinus sylvestris</i>	21	Good	Remove
177	177	Scots Pine	<i>Pinus sylvestris</i>	19	Good	Remove
178	178	Scots Pine	<i>Pinus sylvestris</i>	21	Good	Remove
179	179	Scots Pine	<i>Pinus sylvestris</i>	20	Good	Remove
180	180	Scots Pine	<i>Pinus sylvestris</i>	18	Good	Remove
181	181	Scots Pine	<i>Pinus sylvestris</i>	23	Good	Remove
182	183	Scots Pine	<i>Pinus sylvestris</i>	18	Good	Remove
183	184	Scots Pine	<i>Pinus sylvestris</i>	18	Good	Remove
184	185	Scots Pine	<i>Pinus sylvestris</i>	11	Good	Remove
185	187	Scots Pine	<i>Pinus sylvestris</i>	20	Good	Remove
186	188	Scots Pine	<i>Pinus sylvestris</i>	12	Good	Remove
187	189	Scots Pine	<i>Pinus sylvestris</i>	10	Good	Remove
188	190	Scots Pine	<i>Pinus sylvestris</i>	14	Good	Remove
189	191	Scots Pine	<i>Pinus sylvestris</i>	14	Good	Remove
190	192	Scots Pine	<i>Pinus sylvestris</i>	14	Good	Remove
191	193	Scots Pine	<i>Pinus sylvestris</i>	14	Good	Remove
192	194	Scots Pine	<i>Pinus sylvestris</i>	15	Good	Remove
193	195	Scots Pine	<i>Pinus sylvestris</i>		Good	Remove
194	196	Scots Pine	<i>Pinus sylvestris</i>	12	Good	Remove
195	197	Scots Pine	<i>Pinus sylvestris</i>	27	Good	Injure
196	198	Scots Pine	<i>Pinus sylvestris</i>	11	Good	Remove
197	199	Scots Pine	<i>Pinus sylvestris</i>	17	Good	Preserve
198	200	Scots Pine	<i>Pinus sylvestris</i>	16	Good	Preserve
199	201	Scots Pine	<i>Pinus sylvestris</i>	15	Good	Remove
200	202	Scots Pine	<i>Pinus sylvestris</i>	14	Good	Remove
201	203	Red Ash	<i>Fraxinus pennsylvanica</i>	24	Poor	Preserve
202	204	Red Ash	<i>Fraxinus pennsylvanica</i>	22	Poor	Preserve
203	205	Red Ash	<i>Fraxinus pennsylvanica</i>	18,26	Poor	Preserve

204	205	Red Ash	<i>Fraxinus pennsylvanica</i>	20,24,11	Poor	Preserve
205	207	Red Ash	<i>Fraxinus pennsylvanica</i>	27	Poor	Preserve
206	208	Red Ash	<i>Fraxinus pennsylvanica</i>	20,19	Poor	Preserve
207	209	Red Ash	<i>Fraxinus pennsylvanica</i>	28	Poor	Preserve
208	210	Red Ash	<i>Fraxinus pennsylvanica</i>	23	Poor	Preserve
209	211	Red Ash	<i>Fraxinus pennsylvanica</i>	18,14	Poor	Preserve
210	212	Red Pine	<i>Pinus resinosa</i>	29	Poor	Preserve
211	212	Eastern White Pine	<i>Pinus strobus</i>	73	Good	Remove
212	214	Blue Spruce	<i>Picea pungens</i>	60	Poor	Remove
213	215	Eastern White Cedar	<i>Thuja occidentalis</i>	27,24	Good	Remove
214	216	Eastern White Cedar	<i>Thuja occidentalis</i>	55	Good	Remove
215	217	Eastern White Cedar	<i>Thuja occidentalis</i>	33	Good	Remove
216	218	Douglas Fir	<i>Pseudotsuga menziesii</i>	72	Good	Remove
217	219	Eastern White Cedar	<i>Thuja occidentalis</i>	41,28	Fair	Preserve
218	220	Douglas Fir	<i>Pseudotsuga menziesii</i>	42	Good	Remove
219	221	Eastern White Cedar	<i>Thuja occidentalis</i>	26,22	Fair	Remove
220	222	Eastern White Cedar	<i>Thuja occidentalis</i>	16,16	Fair	Remove
221	223	Scots Pine	<i>Pinus sylvestris</i>	15	Good	Preserve
222	224	Scots Pine	<i>Pinus sylvestris</i>	17	Good	Preserve
223	225	Eastern White Cedar	<i>Thuja occidentalis</i>	13,22	Good	Preserve
224	226	Eastern White Cedar	<i>Thuja occidentalis</i>	13	Good	Preserve
225	227	Scots Pine	<i>Pinus sylvestris</i>	10	Good	Preserve
226	228	White Elm	<i>Ulmus americana</i>	13	Dead	Preserve
227	229	Eastern White Cedar	<i>Thuja occidentalis</i>	12	Good	Preserve
228	230	Scots Pine	<i>Pinus sylvestris</i>	14	Good	Preserve
229	231	Scots Pine	<i>Pinus sylvestris</i>	12	Good	Preserve
230	232	Scots Pine	<i>Pinus sylvestris</i>	14	Good	Preserve
231	233	Scots Pine	<i>Pinus sylvestris</i>	10	Good	Preserve
232	234	Scots Pine	<i>Pinus sylvestris</i>	11	Good	Preserve
233	235	Eastern White Cedar	<i>Thuja occidentalis</i>	13	Good	Preserve
234	236	Eastern White Cedar	<i>Thuja occidentalis</i>	17	Good	Preserve
235	237	Eastern White Cedar	<i>Thuja occidentalis</i>	12	Good	Preserve
236	238	Scots Pine	<i>Pinus sylvestris</i>	17	Good	Preserve
237	239	Scots Pine	<i>Pinus sylvestris</i>	15	Good	Preserve
238	240	Scots Pine	<i>Pinus sylvestris</i>	15	Good	Preserve
239	241	Scots Pine	<i>Pinus sylvestris</i>	22	Good	Preserve
240	242	Scots Pine	<i>Pinus sylvestris</i>	16	Good	Preserve

241	243	White Spruce	<i>Picea glauca</i>	15	Good	Preserve
242	244	Eastern White Cedar	<i>Thuja occidentalis</i>	11	Good	Preserve
243	244	Eastern White Cedar	<i>Thuja occidentalis</i>	13	Good	Preserve
244	245	Eastern White Cedar	<i>Thuja occidentalis</i>	10	Good	Preserve
245	246	Eastern White Cedar	<i>Thuja occidentalis</i>	9,9	Good	Preserve
246	248	Scots Pine	<i>Pinus sylvestris</i>	13	Good	Preserve
247	249	Eastern White Cedar	<i>Thuja occidentalis</i>	12	Good	Preserve
248	250	Eastern White Cedar	<i>Thuja occidentalis</i>	12	Good	Preserve
249	251	Eastern White Cedar	<i>Thuja occidentalis</i>	15	Good	Preserve
250	252	Eastern White Cedar	<i>Thuja occidentalis</i>	14,13	Good	Preserve
251	253	Eastern White Cedar	<i>Thuja occidentalis</i>	16	Good	Preserve
252	254	Scots Pine	<i>Pinus sylvestris</i>	17	Good	Preserve
253	255	Eastern White Cedar	<i>Thuja occidentalis</i>	18	Good	Preserve
254	256	Scots Pine	<i>Pinus sylvestris</i>	23	Good	Preserve
255	257	Scots Pine	<i>Pinus sylvestris</i>	13	Good	Preserve
256	258	Scots Pine	<i>Pinus sylvestris</i>	13	Good	Preserve
257	259	Scots Pine	<i>Pinus sylvestris</i>	13	Good	Preserve
258	260	Scots Pine	<i>Pinus sylvestris</i>	13	Good	Preserve
259	261	Scots Pine	<i>Pinus sylvestris</i>	21	Good	Preserve
260	262	Scots Pine	<i>Pinus sylvestris</i>	22	Good	Preserve
261	263	Scots Pine	<i>Pinus sylvestris</i>	10	Good	Preserve
262	264	Scots Pine	<i>Pinus sylvestris</i>	13	Good	Preserve
263	265	Scots Pine	<i>Pinus sylvestris</i>	13	Good	Preserve
264	266	Scots Pine	<i>Pinus sylvestris</i>	12	Good	Preserve
265	267	Scots Pine	<i>Pinus sylvestris</i>	12	Good	Preserve
266	268	Scots Pine	<i>Pinus sylvestris</i>	16	Good	Preserve
267	269	Scots Pine	<i>Pinus sylvestris</i>	12	Good	Preserve
268	270	Scots Pine	<i>Pinus sylvestris</i>	13	Good	Preserve
269	271	Scots Pine	<i>Pinus sylvestris</i>	10	Good	Preserve
270	272	Scots Pine	<i>Pinus sylvestris</i>	13	Good	Preserve
271	273	Scots Pine	<i>Pinus sylvestris</i>	14	Good	Preserve
272	274	Scots Pine	<i>Pinus sylvestris</i>	11	Good	Preserve
273	275	Scots Pine	<i>Pinus sylvestris</i>	10	Good	Preserve
274	276	Scots Pine	<i>Pinus sylvestris</i>	12	Good	Preserve
275	277	Scots Pine	<i>Pinus sylvestris</i>	10	Good	Preserve
276	278	Scots Pine	<i>Pinus sylvestris</i>	11	Good	Preserve
277	279	Scots Pine	<i>Pinus sylvestris</i>	17	Good	Preserve

278	280	Scots Pine	<i>Pinus sylvestris</i>	14	Good	Preserve
279	281	Scots Pine	<i>Pinus sylvestris</i>	10	Good	Preserve
280	282	Scots Pine	<i>Pinus sylvestris</i>	13	Good	Preserve
281	283	Scots Pine	<i>Pinus sylvestris</i>	16	Good	Preserve
282	284	White Elm	<i>Ulmus americana</i>	14	Dead	Preserve
283	285	Scots Pine	<i>Pinus sylvestris</i>	49	Good	Preserve
284	286	Scots Pine	<i>Pinus sylvestris</i>	23	Good	Preserve
285	287	Eastern Red Cedar	<i>Juniperus virginiana</i>	14	Good	Preserve
286	288	Scots Pine	<i>Pinus sylvestris</i>	44	Good	Preserve
287	289	Scots Pine	<i>Pinus sylvestris</i>	35	Good	Preserve
288	290	Eastern White Cedar	<i>Thuja occidentalis</i>	16	Good	Preserve
289	291	Scots Pine	<i>Pinus sylvestris</i>	18	Good	Preserve
290	292	Scots Pine	<i>Pinus sylvestris</i>	20	Good	Preserve
291	293	Scots Pine	<i>Pinus sylvestris</i>	10	Good	Preserve
292	294	Eastern White Cedar	<i>Thuja occidentalis</i>	13,7	Good	Preserve
293	295	Eastern White Cedar	<i>Thuja occidentalis</i>	11	Good	Preserve
294	296	Eastern White Cedar	<i>Thuja occidentalis</i>	14	Good	Preserve
295	297	Eastern White Cedar	<i>Thuja occidentalis</i>	15	Good	Preserve
296	298	Eastern White Cedar	<i>Thuja occidentalis</i>	21	Good	Preserve
297	299	Eastern White Cedar	<i>Thuja occidentalis</i>	31	Good	Preserve
298	300	Eastern White Cedar	<i>Thuja occidentalis</i>	34	Good	Preserve
299	301	Eastern White Cedar	<i>Thuja occidentalis</i>	44	Fair	Remove
300	302	Eastern White Cedar	<i>Thuja occidentalis</i>	38, 29, 28	Fair	Remove
301	304	Scots Pine	<i>Pinus sylvestris</i>	13	Poor	Preserve
302	362	Scots Pine	<i>Pinus sylvestris</i>	12	Good	Preserve
303	363	Scots Pine	<i>Pinus sylvestris</i>	10	Good	Preserve
304	364	Scots Pine	<i>Pinus sylvestris</i>	10	Good	Preserve
305	365	Scots Pine	<i>Pinus sylvestris</i>	10	Dead	Preserve
306	366	Scots Pine	<i>Pinus sylvestris</i>	26	Good	Preserve
307	367	Scots Pine	<i>Pinus sylvestris</i>	14	Good	Preserve
308	368	Scots Pine	<i>Pinus sylvestris</i>	20	Good	Injure
309	369	Scots Pine	<i>Pinus sylvestris</i>	21	Good	Remove
310	370	Scots Pine	<i>Pinus sylvestris</i>	19	Good	Remove
311	371	Scots Pine	<i>Pinus sylvestris</i>	13	Good	Remove
312	372	Red Pine	<i>Pinus resinosa</i>	11	Good	Remove
313	373	Scots Pine	<i>Pinus sylvestris</i>	27	Good	Preserve
314	374	Scots Pine	<i>Pinus sylvestris</i>	17	Good	Preserve

315	375	Scots Pine	<i>Pinus sylvestris</i>	10	Good	Preserve
316	376	White Elm	<i>Ulmus americana</i>	27	Good	Preserve
317	377	Scots Pine	<i>Pinus sylvestris</i>	12	Good	Preserve
318	378	Scots Pine	<i>Pinus sylvestris</i>	10	Good	Preserve
319	379	Eastern White Pine	<i>Pinus strobus</i>	20	Good	Preserve
320	380	Scots Pine	<i>Pinus sylvestris</i>	13	Good	Remove
321	381	Scots Pine	<i>Pinus sylvestris</i>	12	Good	Remove
322	382	Scots Pine	<i>Pinus sylvestris</i>	14	Good	Remove
323	383	White Elm	<i>Ulmus americana</i>	25	Dead	Remove
324	384	Scots Pine	<i>Pinus sylvestris</i>	14	Good	Remove
325	385	Scots Pine	<i>Pinus sylvestris</i>	12	Good	Remove
326	386	Scots Pine	<i>Pinus sylvestris</i>	18	Good	Remove
327	387	Scots Pine	<i>Pinus sylvestris</i>	17	Good	Remove
328	388	Scots Pine	<i>Pinus sylvestris</i>	12	Good	Remove
329	389	Scots Pine	<i>Pinus sylvestris</i>	17	Good	Remove
330	390	Scots Pine	<i>Pinus sylvestris</i>	10	Dead	Remove
331	391	Scots Pine	<i>Pinus sylvestris</i>	10	Good	Remove
332	392	Scots Pine	<i>Pinus sylvestris</i>	28	Good	Remove
333	393	Scots Pine	<i>Pinus sylvestris</i>	15	Good	Remove
334	394	Scots Pine	<i>Pinus sylvestris</i>	25	Good	Remove
335	395	Scots Pine	<i>Pinus sylvestris</i>	15	Good	Remove
336	396	Scots Pine	<i>Pinus sylvestris</i>	12	Good	Remove
337	397	Scots Pine	<i>Pinus sylvestris</i>	17	Good	Remove
338	398	Scots Pine	<i>Pinus sylvestris</i>	22	Good	Remove
339	399	Scots Pine	<i>Pinus sylvestris</i>	15	Good	Remove
340	400	Scots Pine	<i>Pinus sylvestris</i>	12	Good	Remove
341	401	Scots Pine	<i>Pinus sylvestris</i>	10	Good	Remove
342	402	Scots Pine	<i>Pinus sylvestris</i>	13	Good	Remove
343	403	Scots Pine	<i>Pinus sylvestris</i>	12	Good	Remove
344	404	Scots Pine	<i>Pinus sylvestris</i>	11	Good	Remove
345	404	Eastern White Pine	<i>Pinus strobus</i>	34	Poor	Remove
346	405	Common Apple	<i>Malus pumila</i>	24,21,15,15,14	Fair	Remove
347	406	Scots Pine	<i>Pinus sylvestris</i>	19	Good	Remove
348	408	Scots Pine	<i>Pinus sylvestris</i>	17	Good	Remove
349	409	Scots Pine	<i>Pinus sylvestris</i>	13	Good	Remove
350	410	Scots Pine	<i>Pinus sylvestris</i>	20	Good	Remove
351	411	Scots Pine	<i>Pinus sylvestris</i>	13	Good	Remove

352	412	Scots Pine	<i>Pinus sylvestris</i>	14	Good	Remove
353	413	Scots Pine	<i>Pinus sylvestris</i>	13	Good	Remove
354	414	Scots Pine	<i>Pinus sylvestris</i>	24	Good	Remove
355	415	Scots Pine	<i>Pinus sylvestris</i>	11	Good	Remove
356	416	Scots Pine	<i>Pinus sylvestris</i>	17	Good	Remove
357	417	Scots Pine	<i>Pinus sylvestris</i>	16	Good	Remove
358	418	Red Ash	<i>Fraxinus pennsylvanica</i>	37	Good	Remove
359	419	Scots Pine	<i>Pinus sylvestris</i>	24	Good	Remove
360	420	Scots Pine	<i>Pinus sylvestris</i>	19	Good	Remove
361	421	Scots Pine	<i>Pinus sylvestris</i>	12	Good	Remove
362	422	Scots Pine	<i>Pinus sylvestris</i>	16	Good	Remove
363	423	Scots Pine	<i>Pinus sylvestris</i>	39	Good	Remove
364	424	Scots Pine	<i>Pinus sylvestris</i>	17	Good	Remove
365	424	Red Ash	<i>Fraxinus pennsylvanica</i>	25,25	Fair	Remove
366	427	Scots Pine	<i>Pinus sylvestris</i>	15	Good	Remove
367	428	Scots Pine	<i>Pinus sylvestris</i>	19	Good	Remove
368	429	Scots Pine	<i>Pinus sylvestris</i>	12	Good	Remove
369	430	Red Ash	<i>Fraxinus pennsylvanica</i>	37	Poor	Remove
370	431	Scots Pine	<i>Pinus sylvestris</i>	10	Good	Remove
371	432	Scots Pine	<i>Pinus sylvestris</i>	15,13	Good	Remove
372	433	Scots Pine	<i>Pinus sylvestris</i>	14	Good	Remove
373	434	Scots Pine	<i>Pinus sylvestris</i>	10	Good	Remove
374	435	Scots Pine	<i>Pinus sylvestris</i>	16	Good	Remove
375	436	Eastern White Pine	<i>Pinus strobus</i>	55	Good	Remove
376	437	Eastern White Pine	<i>Pinus strobus</i>	18	Good	Remove
377	438	Eastern White Cedar	<i>Thuja occidentalis</i>	11	Good	Preserve
378	439	Eastern White Cedar	<i>Thuja occidentalis</i>	16	Good	Preserve
379	440	Scots Pine	<i>Pinus sylvestris</i>	11	Good	Preserve
380	441	Scots Pine	<i>Pinus sylvestris</i>	18	Good	Remove
381	442	Scots Pine	<i>Pinus sylvestris</i>	28	Good	Remove
382	443	Scots Pine	<i>Pinus sylvestris</i>	18	Good	Remove
383	444	Scots Pine	<i>Pinus sylvestris</i>	11	Good	Remove
384	445	Scots Pine	<i>Pinus sylvestris</i>	15	Good	Remove
385	446	Eastern White Pine	<i>Pinus strobus</i>	22	Good	Remove
386	447	Eastern White Pine	<i>Pinus strobus</i>	21	Good	Remove
387	447	Scots Pine	<i>Pinus sylvestris</i>	20	Good	Remove
388	448	Eastern White Cedar	<i>Thuja occidentalis</i>	11	Good	Remove

389	450	Scots Pine	<i>Pinus sylvestris</i>	11	Good	Remove
390	451	White Spruce	<i>Picea glauca</i>	21	Good	Remove
391	452	Scots Pine	<i>Pinus sylvestris</i>	11	Good	Remove
392	453	Scots Pine	<i>Pinus sylvestris</i>	13	Good	Remove
393	454	Eastern White Pine	<i>Pinus strobus</i>	17	Good	Remove
394	455	Scots Pine	<i>Pinus sylvestris</i>	10	Good	Remove
395	456	Scots Pine	<i>Pinus sylvestris</i>	15	Good	Preserve
396	457	Scots Pine	<i>Pinus sylvestris</i>	14	Good	Preserve
397	458	Scots Pine	<i>Pinus sylvestris</i>	17	Good	Preserve
398	459	Scots Pine	<i>Pinus sylvestris</i>	10	Good	Preserve
399	460	Scots Pine	<i>Pinus sylvestris</i>	19	Good	Preserve
400	461	Scots Pine	<i>Pinus sylvestris</i>	17	Good	Preserve
401	462	Scots Pine	<i>Pinus sylvestris</i>	11	Good	Preserve
402	463	Scots Pine	<i>Pinus sylvestris</i>	19	Good	Preserve
403	464	Scots Pine	<i>Pinus sylvestris</i>	19	Good	Preserve
404	465	Scots Pine	<i>Pinus sylvestris</i>	20	Good	Preserve
405	466	White Spruce	<i>Picea glauca</i>	14	Good	Preserve
406	467	Scots Pine	<i>Pinus sylvestris</i>	16	Good	Preserve
407	468	Eastern White Pine	<i>Pinus strobus</i>	18	Good	Preserve
408	469	Scots Pine	<i>Pinus sylvestris</i>	20	Good	Preserve
409	470	Scots Pine	<i>Pinus sylvestris</i>	14	Good	Preserve
410	471	Scots Pine	<i>Pinus sylvestris</i>	13	Good	Preserve
411	472	Scots Pine	<i>Pinus sylvestris</i>	13	Good	Preserve
412	473	Scots Pine	<i>Pinus sylvestris</i>	11	Good	Preserve
413	474	Scots Pine	<i>Pinus sylvestris</i>	19	Good	Injure
414	475	Scots Pine	<i>Pinus sylvestris</i>	16	Good	Preserve
415	476	Scots Pine	<i>Pinus sylvestris</i>	11	Good	Preserve
416	477	Scots Pine	<i>Pinus sylvestris</i>	17	Good	Preserve
417	478	Eastern White Cedar	<i>Thuja occidentalis</i>	12	Good	Remove
418	479	Scots Pine	<i>Pinus sylvestris</i>	16	Good	Remove
419	480	Scots Pine	<i>Pinus sylvestris</i>	10	Good	Preserve
420	481	Scots Pine	<i>Pinus sylvestris</i>	30	Good	Preserve
421	482	Scots Pine	<i>Pinus sylvestris</i>	20	Good	Preserve
422	483	Scots Pine	<i>Pinus sylvestris</i>	12	Good	Remove
423	484	Scots Pine	<i>Pinus sylvestris</i>	18	Good	Remove
424	485	Scots Pine	<i>Pinus sylvestris</i>	13	Good	Remove
425	486	White Spruce	<i>Picea glauca</i>	26	Good	Remove

426	487	Scots Pine	<i>Pinus sylvestris</i>	15	Good	Remove
427	488	Scots Pine	<i>Pinus sylvestris</i>	13	Good	Remove
428	489	Scots Pine	<i>Pinus sylvestris</i>	13	Good	Remove
429	490	Scots Pine	<i>Pinus sylvestris</i>	17	Good	Remove
430	491	Scots Pine	<i>Pinus sylvestris</i>	12	Good	Remove
431	492	Scots Pine	<i>Pinus sylvestris</i>	16	Good	Remove
432	492	Eastern White Cedar	<i>Thuja occidentalis</i>	21	Good	Remove
433	493	Scots Pine	<i>Pinus sylvestris</i>	16	Good	Preserve
434	494	White Spruce	<i>Picea glauca</i>	29	Good	Preserve
435	495	Scots Pine	<i>Pinus sylvestris</i>	13	Good	Preserve
436	496	Scots Pine	<i>Pinus sylvestris</i>	10	Good	Preserve
437	496	Eastern White Cedar	<i>Thuja occidentalis</i>	17	Good	Preserve
438	498	Scots Pine	<i>Pinus sylvestris</i>	15	Good	Preserve
439	500	Scots Pine	<i>Pinus sylvestris</i>	15	Dead	Preserve
440	651	Eastern White Cedar	<i>Thuja occidentalis</i>	12	Good	Preserve
441	652	Scots Pine	<i>Pinus sylvestris</i>	10	Good	Preserve
442	653	Scots Pine	<i>Pinus sylvestris</i>	13	Good	Preserve
443	654	Scots Pine	<i>Pinus sylvestris</i>	11	Good	Preserve
444	655	Scots Pine	<i>Pinus sylvestris</i>	14	Good	Preserve
445	656	Eastern White Cedar	<i>Thuja occidentalis</i>	12	Good	Remove
446	657	Eastern White Cedar	<i>Thuja occidentalis</i>	11	Good	Preserve
447	658	Eastern White Cedar	<i>Thuja occidentalis</i>	10	Good	Preserve
448	659	Scots Pine	<i>Pinus sylvestris</i>	32	Dead	Remove
449	660	Eastern White Cedar	<i>Thuja occidentalis</i>	11	Good	Remove
450	661	Eastern White Cedar	<i>Thuja occidentalis</i>	10	Good	Remove
451	662	Scots Pine	<i>Pinus sylvestris</i>	14	Good	Remove
452	663	Eastern White Cedar	<i>Thuja occidentalis</i>	11	Good	Remove
453	664	Scots Pine	<i>Pinus sylvestris</i>	16	Good	Remove
454	665	Eastern White Cedar	<i>Thuja occidentalis</i>	14	Good	Remove
455	666	Eastern White Cedar	<i>Thuja occidentalis</i>	15	Good	Remove
456	667	Eastern White Cedar	<i>Thuja occidentalis</i>	14	Good	Remove
457	668	Eastern White Cedar	<i>Thuja occidentalis</i>	10	Good	Remove
458	669	Eastern White Cedar	<i>Thuja occidentalis</i>	10	Good	Remove
459	670	Eastern White Cedar	<i>Thuja occidentalis</i>	10	Good	Remove
460	671	Scots Pine	<i>Pinus sylvestris</i>	15	Good	Preserve
461	672	Eastern White Cedar	<i>Thuja occidentalis</i>	11	Good	Preserve
462	673	White Elm	<i>Ulmus americana</i>	21	Good	Remove

463	674	Eastern White Cedar	<i>Thuja occidentalis</i>	14	Good	Remove
464	675	Eastern White Cedar	<i>Thuja occidentalis</i>	13	Good	Remove
465	677	Eastern White Cedar	<i>Thuja occidentalis</i>	11	Good	Remove
466	677	Scots Pine	<i>Pinus sylvestris</i>	16	Good	Remove
467	678	Scots Pine	<i>Pinus sylvestris</i>	13	Good	Remove
468	679	Eastern White Cedar	<i>Thuja occidentalis</i>	13	Good	Remove
469	680	Scots Pine	<i>Pinus sylvestris</i>	15	Good	Remove
470	681	Scots Pine	<i>Pinus sylvestris</i>	11	Good	Remove
471	682	Scots Pine	<i>Pinus sylvestris</i>	12	Good	Remove
472	683	Eastern White Cedar	<i>Thuja occidentalis</i>	10	Good	Remove
473	684	Eastern White Cedar	<i>Thuja occidentalis</i>	10	Good	Remove
474	685	Eastern White Cedar	<i>Thuja occidentalis</i>	12	Good	Remove
475	686	Eastern White Cedar	<i>Thuja occidentalis</i>	12	Good	Remove
476	687	Eastern White Cedar	<i>Thuja occidentalis</i>	11	Good	Remove
477	688	Scots Pine	<i>Pinus sylvestris</i>	14	Good	Remove
478	690	Eastern White Cedar	<i>Thuja occidentalis</i>	10	Good	Remove
479	690	Eastern White Cedar	<i>Thuja occidentalis</i>	10	Good	Remove
480	691	Eastern White Cedar	<i>Thuja occidentalis</i>	10	Good	Remove
481	692	Scots Pine	<i>Pinus sylvestris</i>	17	Good	Remove
482	693	Eastern White Cedar	<i>Thuja occidentalis</i>	10	Good	Remove
483	694	Eastern White Cedar	<i>Thuja occidentalis</i>	10	Good	Remove
484	695	Eastern White Cedar	<i>Thuja occidentalis</i>	15,13	Good	Remove
485	696	Eastern White Cedar	<i>Thuja occidentalis</i>	12	Good	Remove
486	697	Eastern White Cedar	<i>Thuja occidentalis</i>	11	Good	Remove
487	698	Eastern White Cedar	<i>Thuja occidentalis</i>	14	Good	Remove
488	699	Eastern White Cedar	<i>Thuja occidentalis</i>	13	Good	Remove
489	700	Eastern White Cedar	<i>Thuja occidentalis</i>	11	Good	Remove
490	701	Scots Pine	<i>Pinus sylvestris</i>	27	Dead	Remove
491	702	Scots Pine	<i>Pinus sylvestris</i>	13	Dead	Remove
492	703	Eastern White Cedar	<i>Thuja occidentalis</i>	13	Good	Remove
493	703	Eastern White Cedar	<i>Thuja occidentalis</i>	11	Good	Remove
494	704	Eastern White Cedar	<i>Thuja occidentalis</i>	12	Good	Remove
495	705	Eastern White Cedar	<i>Thuja occidentalis</i>	12	Good	Remove
496	706	Eastern White Cedar	<i>Thuja occidentalis</i>	10	Good	Remove
497	707	Scots Pine	<i>Pinus sylvestris</i>	13	Good	Remove
498	708	Eastern White Cedar	<i>Thuja occidentalis</i>	15,8,5,5	Good	Remove
499	710	Eastern White Cedar	<i>Thuja occidentalis</i>	10	Good	Remove

500	711	Eastern White Cedar	<i>Thuja occidentalis</i>	11	Good	Remove
501	712	Eastern White Cedar	<i>Thuja occidentalis</i>	13,7,7,5	Good	Remove
502	713	Eastern White Cedar	<i>Thuja occidentalis</i>	12,10,7	Good	Remove
503	714	Eastern White Cedar	<i>Thuja occidentalis</i>	13	Good	Remove
504	715	Eastern White Cedar	<i>Thuja occidentalis</i>	16	Good	Remove
505	716	Eastern White Cedar	<i>Thuja occidentalis</i>	11,8	Good	Remove
506	717	Scots Pine	<i>Pinus sylvestris</i>	19	Good	Remove
507	718	Eastern White Cedar	<i>Thuja occidentalis</i>	14	Good	Remove
508	719	Eastern White Cedar	<i>Thuja occidentalis</i>	12	Good	Remove
509	720	Eastern White Cedar	<i>Thuja occidentalis</i>	18	Good	Remove
510	721	Eastern White Cedar	<i>Thuja occidentalis</i>	14	Good	Remove
511	722	Eastern White Cedar	<i>Thuja occidentalis</i>	13,10	Good	Remove
512	723	Eastern White Cedar	<i>Thuja occidentalis</i>	13	Good	Remove
513	724	Eastern White Cedar	<i>Thuja occidentalis</i>	12	Good	Remove
514	725	Scots Pine	<i>Pinus sylvestris</i>	19	Good	Preserve
515	726	Eastern White Cedar	<i>Thuja occidentalis</i>	15	Good	Preserve
516	727	Eastern White Cedar	<i>Thuja occidentalis</i>	10	Good	Remove
517	728	Eastern White Cedar	<i>Thuja occidentalis</i>	11	Good	Preserve
518	729	Eastern White Cedar	<i>Thuja occidentalis</i>	13	Good	Remove
519	730	Eastern White Cedar	<i>Thuja occidentalis</i>	13	Good	Remove
520	731	Eastern White Cedar	<i>Thuja occidentalis</i>	10	Good	Remove
521	732	Eastern White Cedar	<i>Thuja occidentalis</i>	14,9	Good	Remove
522	733	Eastern White Cedar	<i>Thuja occidentalis</i>	13	Good	Remove
523	734	Eastern White Cedar	<i>Thuja occidentalis</i>	13,9	Good	Remove
524	735	Eastern White Cedar	<i>Thuja occidentalis</i>	13	Good	Remove
525	736	Eastern White Cedar	<i>Thuja occidentalis</i>	10	Good	Remove
526	737	Eastern White Cedar	<i>Thuja occidentalis</i>	10	Good	Remove
527	738	Eastern White Cedar	<i>Thuja occidentalis</i>	18	Good	Remove
528	739	Eastern White Cedar	<i>Thuja occidentalis</i>	10	Good	Remove
529	740	Eastern White Cedar	<i>Thuja occidentalis</i>	11	Good	Remove
530	741	Eastern White Cedar	<i>Thuja occidentalis</i>	11	Good	Remove
531	742	Eastern White Cedar	<i>Thuja occidentalis</i>	12	Good	Remove
532	743	Eastern White Cedar	<i>Thuja occidentalis</i>	15	Good	Preserve
533	744	Eastern White Cedar	<i>Thuja occidentalis</i>	12	Good	Preserve
534	745	Eastern White Cedar	<i>Thuja occidentalis</i>	10	Good	Preserve
535	746	Eastern White Cedar	<i>Thuja occidentalis</i>	10	Good	Preserve
536	747	Eastern White Cedar	<i>Thuja occidentalis</i>	14,9	Good	Injure

537	748	Eastern White Cedar	<i>Thuja occidentalis</i>	11	Good	Preserve
538	749	Eastern White Cedar	<i>Thuja occidentalis</i>	15	Good	Preserve
539	750	Eastern White Cedar	<i>Thuja occidentalis</i>	10	Good	Preserve
540	751	Eastern White Cedar	<i>Thuja occidentalis</i>	11	Good	Preserve
541	752	Eastern White Cedar	<i>Thuja occidentalis</i>	12	Good	Preserve
542	753	Eastern White Cedar	<i>Thuja occidentalis</i>	13	Good	Preserve
543	754	Eastern White Cedar	<i>Thuja occidentalis</i>	12	Good	Preserve
544	755	Eastern White Cedar	<i>Thuja occidentalis</i>	14	Good	Preserve
545	756	Eastern White Cedar	<i>Thuja occidentalis</i>	14	Good	Preserve
546	757	Eastern White Cedar	<i>Thuja occidentalis</i>	10	Good	Preserve
547	758	Eastern White Cedar	<i>Thuja occidentalis</i>	11	Good	Preserve
548	759	Eastern White Cedar	<i>Thuja occidentalis</i>	13	Good	Preserve
549	760	Eastern White Cedar	<i>Thuja occidentalis</i>	12	Good	Preserve
550	761	Eastern White Cedar	<i>Thuja occidentalis</i>	10	Good	Preserve
551	762	Eastern White Cedar	<i>Thuja occidentalis</i>	10	Good	Preserve
552	763	Eastern White Cedar	<i>Thuja occidentalis</i>	10	Good	Preserve
553	764	Eastern White Cedar	<i>Thuja occidentalis</i>	10	Good	Preserve
554	765	Eastern White Cedar	<i>Thuja occidentalis</i>	10	Good	Preserve
555	766	Eastern White Cedar	<i>Thuja occidentalis</i>	16	Good	Remove
556	767	Eastern White Cedar	<i>Thuja occidentalis</i>	21	Good	Remove
557	768	Eastern White Cedar	<i>Thuja occidentalis</i>	11	Good	Remove
558	769	Eastern White Cedar	<i>Thuja occidentalis</i>	14	Good	Remove
559	770	Eastern White Cedar	<i>Thuja occidentalis</i>	13	Good	Remove
560	771	Eastern White Cedar	<i>Thuja occidentalis</i>	12	Good	Remove
561	772	Eastern White Cedar	<i>Thuja occidentalis</i>	15	Good	Remove
562	774	Eastern White Cedar	<i>Thuja occidentalis</i>	22,8	Good	Remove
563	775	Eastern White Cedar	<i>Thuja occidentalis</i>	13	Good	Remove
564	776	Eastern White Cedar	<i>Thuja occidentalis</i>	19,18	Good	Remove
565	776	Eastern White Cedar	<i>Thuja occidentalis</i>	17,17,17	Good	Remove
566	777	Eastern White Cedar	<i>Thuja occidentalis</i>	10	Good	Remove
567	778	Eastern White Cedar	<i>Thuja occidentalis</i>	12	Good	Remove
568	779	Eastern White Cedar	<i>Thuja occidentalis</i>	18	Good	Remove
569	780	Eastern White Cedar	<i>Thuja occidentalis</i>	11	Good	Remove
570	781	Eastern White Cedar	<i>Thuja occidentalis</i>	16	Good	Remove
571	782	Eastern White Cedar	<i>Thuja occidentalis</i>	11	Good	Remove
572	783	Eastern White Cedar	<i>Thuja occidentalis</i>	17	Good	Remove
573	784	Eastern White Cedar	<i>Thuja occidentalis</i>	13	Good	Remove

574	785	Eastern White Cedar	<i>Thuja occidentalis</i>	15	Good	Remove
575	786	Eastern White Cedar	<i>Thuja occidentalis</i>	17	Good	Remove
576	787	Eastern White Cedar	<i>Thuja occidentalis</i>	13	Good	Remove
577	788	Eastern White Cedar	<i>Thuja occidentalis</i>	14	Good	Remove
578	789	Eastern White Cedar	<i>Thuja occidentalis</i>	12	Good	Remove
579	790	Eastern White Cedar	<i>Thuja occidentalis</i>	14	Good	Remove
580	791	Eastern White Cedar	<i>Thuja occidentalis</i>	15	Good	Remove
581	792	Eastern White Cedar	<i>Thuja occidentalis</i>	10	Good	Remove
582	793	Eastern White Cedar	<i>Thuja occidentalis</i>	12	Good	Remove
583	794	Eastern White Cedar	<i>Thuja occidentalis</i>	11	Good	Remove
584	795	Eastern White Cedar	<i>Thuja occidentalis</i>	10	Good	Remove
585	796	Eastern White Cedar	<i>Thuja occidentalis</i>	10	Good	Remove
586	797	Eastern White Cedar	<i>Thuja occidentalis</i>	10	Good	Remove
587	798	Scots Pine	<i>Pinus sylvestris</i>	14	Good	Remove
588	799	Scots Pine	<i>Pinus sylvestris</i>	11	Good	Remove
589	800	Eastern White Cedar	<i>Thuja occidentalis</i>	11	Good	Remove
590	801	Eastern White Cedar	<i>Thuja occidentalis</i>	12	Good	Remove
591	802	Eastern White Cedar	<i>Thuja occidentalis</i>	10	Good	Remove
592	803	Eastern White Cedar	<i>Thuja occidentalis</i>	18,16	Good	Remove
593	804	Eastern White Cedar	<i>Thuja occidentalis</i>	10	Good	Remove
594	805	Eastern White Cedar	<i>Thuja occidentalis</i>	12	Good	Remove
595	806	Eastern White Cedar	<i>Thuja occidentalis</i>	11	Good	Remove
596	807	Eastern White Cedar	<i>Thuja occidentalis</i>	10	Good	Remove
597	808	Eastern White Cedar	<i>Thuja occidentalis</i>	11	Good	Remove
598	809	Scots Pine	<i>Pinus sylvestris</i>	11	Good	Remove
599	810	Eastern White Cedar	<i>Thuja occidentalis</i>	12	Good	Remove
600	811	Scots Pine	<i>Pinus sylvestris</i>	10	Good	Remove
601	812	Eastern White Cedar	<i>Thuja occidentalis</i>	10	Good	Remove
602	813	Eastern White Cedar	<i>Thuja occidentalis</i>	12	Good	Remove
603	814	Eastern White Cedar	<i>Thuja occidentalis</i>	19	Good	Remove
604	815	Eastern White Cedar	<i>Thuja occidentalis</i>	17,9,8	Good	Remove
605	816	Eastern White Cedar	<i>Thuja occidentalis</i>	12	Good	Remove
606	817	Scots Pine	<i>Pinus sylvestris</i>	15	Good	Remove
607	818	Scots Pine	<i>Pinus sylvestris</i>	13	Fair	Remove
608	819	Eastern White Cedar	<i>Thuja occidentalis</i>	14	Good	Remove
609	820	Scots Pine	<i>Pinus sylvestris</i>	17	Good	Remove
610	821	Scots Pine	<i>Pinus sylvestris</i>	11	Dead	Preserve

611	822	Scots Pine	<i>Pinus sylvestris</i>	11	Good	Preserve
612	823	Scots Pine	<i>Pinus sylvestris</i>	10	Good	Preserve
613	824	Eastern White Cedar	<i>Thuja occidentalis</i>	12	Good	Preserve
614	825	Scots Pine	<i>Pinus sylvestris</i>	22	Good	Preserve
615	826	Scots Pine	<i>Pinus sylvestris</i>	14	Good	Preserve
616	827	Eastern White Cedar	<i>Thuja occidentalis</i>	11	Good	Preserve
617	828	Eastern White Cedar	<i>Thuja occidentalis</i>	11,10	Good	Preserve
618	829	Eastern White Cedar	<i>Thuja occidentalis</i>	12	Good	Preserve
619	830	Eastern White Cedar	<i>Thuja occidentalis</i>	10	Good	Preserve
620	831	Eastern White Cedar	<i>Thuja occidentalis</i>	10	Good	Preserve
621	832	Eastern White Cedar	<i>Thuja occidentalis</i>	13	Good	Preserve
622	833	Eastern White Cedar	<i>Thuja occidentalis</i>	13	Good	Preserve
623	834	Eastern White Cedar	<i>Thuja occidentalis</i>	10	Good	Preserve
624	835	Eastern White Cedar	<i>Thuja occidentalis</i>	10	Good	Preserve
625	836	Eastern White Cedar	<i>Thuja occidentalis</i>	12	Good	Preserve
626	837	Scots Pine	<i>Pinus sylvestris</i>	11	Good	Preserve
627	838	White Spruce	<i>Picea glauca</i>	15	Good	Preserve
628	839	Scots Pine	<i>Pinus sylvestris</i>	19	Good	Preserve
629	840	Eastern White Cedar	<i>Thuja occidentalis</i>	12	Good	Remove
630	841	Eastern White Cedar	<i>Thuja occidentalis</i>	10	Good	Remove
631	842	Eastern White Cedar	<i>Thuja occidentalis</i>	11	Good	Remove
632	843	Scots Pine	<i>Pinus sylvestris</i>	11	Good	Remove
633	844	Eastern White Cedar	<i>Thuja occidentalis</i>	10	Good	Remove
634	845	Scots Pine	<i>Pinus sylvestris</i>	10	Good	Remove
635	846	Eastern White Cedar	<i>Thuja occidentalis</i>	12	Good	Remove
636	847	White Elm	<i>Ulmus americana</i>	14	Good	Injure
637	848	Eastern White Cedar	<i>Thuja occidentalis</i>	11	Good	Preserve
638	849	Eastern White Cedar	<i>Thuja occidentalis</i>	9,5	Good	Preserve
639	850	Eastern White Cedar	<i>Thuja occidentalis</i>	10	Good	Preserve
640	851	White Elm	<i>Ulmus americana</i>	12	Good	Preserve
641	852	White Elm	<i>Ulmus americana</i>	10	Poor	Preserve
642	853	Eastern White Cedar	<i>Thuja occidentalis</i>	13	Good	Preserve
643	854	Eastern White Cedar	<i>Thuja occidentalis</i>	11	Good	Preserve
644	855	Eastern White Cedar	<i>Thuja occidentalis</i>	12	Good	Preserve
645	856	Eastern White Cedar	<i>Thuja occidentalis</i>	11	Good	Preserve
646	857	White Elm	<i>Ulmus americana</i>	13	Good	Preserve
647	858	Eastern White Cedar	<i>Thuja occidentalis</i>	14	Good	Preserve

648	859	Eastern White Cedar	<i>Thuja occidentalis</i>	15	Good	Preserve
649	860	Eastern White Cedar	<i>Thuja occidentalis</i>	10	Good	Preserve
650	861	Eastern White Cedar	<i>Thuja occidentalis</i>	10,10	Good	Remove
651	862	Eastern White Cedar	<i>Thuja occidentalis</i>	12	Good	Remove
652	863	White Elm	<i>Ulmus americana</i>	13	Dead	Preserve
653	864	Eastern White Pine	<i>Pinus strobus</i>	30	Good	Remove
654	865	Scots Pine	<i>Pinus sylvestris</i>	13	Good	Remove
655	866	Scots Pine	<i>Pinus sylvestris</i>	20	Good	Remove
656	867	Eastern White Cedar	<i>Thuja occidentalis</i>	11	Good	Remove
657	869	Eastern White Cedar	<i>Thuja occidentalis</i>	17	Good	Preserve
658	870	Eastern White Cedar	<i>Thuja occidentalis</i>	13	Good	Preserve
659	871	Eastern White Cedar	<i>Thuja occidentalis</i>	11	Good	Preserve
660	872	Eastern White Cedar	<i>Thuja occidentalis</i>	13	Good	Preserve
661	873	Eastern White Cedar	<i>Thuja occidentalis</i>	12	Good	Injure
662	874	Scots Pine	<i>Pinus sylvestris</i>	18	Good	Preserve
663	875	White Spruce	<i>Picea glauca</i>	27	Good	Remove
664	876	Eastern White Cedar	<i>Thuja occidentalis</i>	12	Good	Remove
665	877	Eastern White Cedar	<i>Thuja occidentalis</i>	10	Good	Remove
666	878	Eastern White Cedar	<i>Thuja occidentalis</i>	11	Good	Remove
667	879	Eastern White Cedar	<i>Thuja occidentalis</i>	12	Good	Remove
668	880	White Elm	<i>Ulmus americana</i>	17	Fair	Remove
669	881	Eastern White Cedar	<i>Thuja occidentalis</i>	10	Good	Remove
670	882	Eastern White Cedar	<i>Thuja occidentalis</i>	12	Good	Remove
671	883	Scots Pine	<i>Pinus sylvestris</i>	16	Good	Remove
672	884	Eastern White Cedar	<i>Thuja occidentalis</i>	15	Good	Remove
673	885	Eastern White Cedar	<i>Thuja occidentalis</i>	10	Good	Remove
674	886	White Spruce	<i>Picea glauca</i>	14	Good	Remove
675	887	Scots Pine	<i>Pinus sylvestris</i>	10	Good	Remove
676	888	White Spruce	<i>Picea glauca</i>	23	Good	Remove
677	889	White Elm	<i>Ulmus americana</i>	13	Good	Remove
678	890	Eastern White Cedar	<i>Thuja occidentalis</i>	11	Good	Remove
679	891	White Elm	<i>Ulmus americana</i>	10	Good	Remove
680	892	Scots Pine	<i>Pinus sylvestris</i>	13	Good	Remove
681	893	Eastern White Cedar	<i>Thuja occidentalis</i>	12	Good	Remove
682	894	Eastern White Cedar	<i>Thuja occidentalis</i>	10	Good	Remove
683	895	Eastern White Cedar	<i>Thuja occidentalis</i>	11	Good	Remove
684	896	Eastern White Cedar	<i>Thuja occidentalis</i>	11	Good	Remove

685	897	Eastern White Cedar	<i>Thuja occidentalis</i>	10	Good	Remove
686	898	Eastern White Cedar	<i>Thuja occidentalis</i>	11	Good	Remove
687	899	Eastern White Cedar	<i>Thuja occidentalis</i>	12,10	Good	Remove
688	900	Eastern White Cedar	<i>Thuja occidentalis</i>	15	Good	Remove
689	901	Eastern White Cedar	<i>Thuja occidentalis</i>	14	Good	Remove
690	902	Eastern White Cedar	<i>Thuja occidentalis</i>	18	Good	Preserve
691	903	Scots Pine	<i>Pinus sylvestris</i>	18	Good	Preserve
692	904	Eastern White Cedar	<i>Thuja occidentalis</i>	12	Good	Preserve
693	905	Eastern White Cedar	<i>Thuja occidentalis</i>	13	Good	Preserve
694	906	Eastern White Cedar	<i>Thuja occidentalis</i>	10	Good	Remove
695	907	Eastern White Cedar	<i>Thuja occidentalis</i>	10	Good	Remove
696	908	Eastern White Cedar	<i>Thuja occidentalis</i>	10	Good	Remove
697	909	Eastern White Cedar	<i>Thuja occidentalis</i>	12	Good	Remove
698	910	White Elm	<i>Ulmus americana</i>	11	Dead	Preserve
699	911	Eastern White Cedar	<i>Thuja occidentalis</i>	10	Good	Preserve
700	912	White Elm	<i>Ulmus americana</i>	14	Good	Preserve
701	913	Eastern White Cedar	<i>Thuja occidentalis</i>	15	Good	Preserve
702	914	Eastern White Cedar	<i>Thuja occidentalis</i>	12	Good	Preserve
703	915	Eastern White Cedar	<i>Thuja occidentalis</i>	12	Good	Preserve
704	916	Eastern White Cedar	<i>Thuja occidentalis</i>	16	Good	Preserve
705	917	Eastern White Cedar	<i>Thuja occidentalis</i>	13	Good	Preserve
706	918	Eastern White Cedar	<i>Thuja occidentalis</i>	15	Good	Preserve
707	919	White Spruce	<i>Picea glauca</i>	14	Good	Preserve
708	920	Scots Pine	<i>Pinus sylvestris</i>	14	Dead	Preserve
709	921	White Spruce	<i>Picea glauca</i>	22	Good	Preserve
710	922	Eastern White Cedar	<i>Thuja occidentalis</i>	13,10	Good	Preserve
711	923	Eastern White Cedar	<i>Thuja occidentalis</i>	11	Good	Remove
712	924	Eastern White Cedar	<i>Thuja occidentalis</i>	12	Good	Remove
713	925	Scots Pine	<i>Pinus sylvestris</i>	13	Good	Remove
714	926	Scots Pine	<i>Pinus sylvestris</i>	10	Good	Remove
715	927	Scots Pine	<i>Pinus sylvestris</i>	10	Good	Remove
716	928	Scots Pine	<i>Pinus sylvestris</i>	10	Good	Remove
717	929	Scots Pine	<i>Pinus sylvestris</i>	10	Good	Remove
718	930	Scots Pine	<i>Pinus sylvestris</i>	10	Good	Preserve
719	931	Scots Pine	<i>Pinus sylvestris</i>	11	Good	Remove
720	932	Eastern White Cedar	<i>Thuja occidentalis</i>	15	Good	Remove
721	933	Eastern White Cedar	<i>Thuja occidentalis</i>	14,10	Good	Remove

722	934	White Spruce	<i>Picea glauca</i>	21	Good	Remove
723	935	Scots Pine	<i>Pinus sylvestris</i>	21	Dead	Remove
724	936	Eastern White Cedar	<i>Thuja occidentalis</i>	14	Good	Remove
725	937	Eastern White Cedar	<i>Thuja occidentalis</i>	10	Good	Remove
726	938	Paper Birch	<i>Betula papyrifera</i>	15,12	Dead	Remove
727	939	White Spruce	<i>Picea glauca</i>	12	Good	Remove
728	940	White Spruce	<i>Picea glauca</i>	10	Good	Remove
729	941	Scots Pine	<i>Pinus sylvestris</i>	11	Good	Preserve
730	942	Scots Pine	<i>Pinus sylvestris</i>	11	Good	Remove
731	943	Scots Pine	<i>Pinus sylvestris</i>	16	Good	Preserve
732	944	Eastern White Cedar	<i>Thuja occidentalis</i>	14	Good	Preserve
733	945	Scots Pine	<i>Pinus sylvestris</i>	14	Poor	Preserve
734	946	Scots Pine	<i>Pinus sylvestris</i>	14	Fair	Remove
735	947	Scots Pine	<i>Pinus sylvestris</i>	11	Good	Remove
736	948	Scots Pine	<i>Pinus sylvestris</i>	11	Good	Remove
737	949	White Spruce	<i>Picea glauca</i>	11	Good	Preserve
738	950	Scots Pine	<i>Pinus sylvestris</i>	14	Good	Remove
739	951	Scots Pine	<i>Pinus sylvestris</i>	10	Good	Remove
740	952	Scots Pine	<i>Pinus sylvestris</i>	11	Good	Remove
741	953	Scots Pine	<i>Pinus sylvestris</i>	11	Good	Remove
742	954	Scots Pine	<i>Pinus sylvestris</i>	11	Good	Remove
743	955	Scots Pine	<i>Pinus sylvestris</i>	11	Dead	Remove
744	956	Scots Pine	<i>Pinus sylvestris</i>	12	Good	Remove
745	957	Scots Pine	<i>Pinus sylvestris</i>	10	Dead	Remove
746	958	Scots Pine	<i>Pinus sylvestris</i>	10	Dead	Remove
747	959	Scots Pine	<i>Pinus sylvestris</i>	10	Dead	Remove
748	960	Scots Pine	<i>Pinus sylvestris</i>	13	Good	Remove
749	961	Scots Pine	<i>Pinus sylvestris</i>	13	Good	Remove
750	962	Scots Pine	<i>Pinus sylvestris</i>	15	Good	Remove
751	963	Scots Pine	<i>Pinus sylvestris</i>	10	Good	Remove
752	964	Scots Pine	<i>Pinus sylvestris</i>	14	Good	Remove
753	965	Scots Pine	<i>Pinus sylvestris</i>	11	Good	Remove
754	966	Scots Pine	<i>Pinus sylvestris</i>	10	Good	Remove
755	967	Scots Pine	<i>Pinus sylvestris</i>	12	Dead	Remove
756	968	Scots Pine	<i>Pinus sylvestris</i>	15	Good	Remove
757	969	Scots Pine	<i>Pinus sylvestris</i>	10	Good	Remove
758	970	White Spruce	<i>Picea glauca</i>	39	Good	Remove

759	971	Eastern White Pine	<i>Pinus strobus</i>	12,6	Fair	Remove
760	972	Scots Pine	<i>Pinus sylvestris</i>	12	Good	Remove
761	973	Scots Pine	<i>Pinus sylvestris</i>	12	Good	Remove
762	974	Scots Pine	<i>Pinus sylvestris</i>	12	Dead	Remove
763	975	Scots Pine	<i>Pinus sylvestris</i>	10	Good	Remove
764	976	Scots Pine	<i>Pinus sylvestris</i>	10	Good	Remove
765	977	Scots Pine	<i>Pinus sylvestris</i>	10	Good	Preserve
766	978	Eastern White Cedar	<i>Thuja occidentalis</i>	12	Good	Preserve
767	979	Red Pine	<i>Pinus resinosa</i>	33	Good	Remove
768	980	Eastern White Cedar	<i>Thuja occidentalis</i>	12	Good	Preserve
769	981	White Spruce	<i>Picea glauca</i>	21	Good	Preserve
770	982	White Elm	<i>Ulmus americana</i>	13	Dead	Remove
771	983	Scots Pine	<i>Pinus sylvestris</i>	10	Good	Remove
772	984	Scots Pine	<i>Pinus sylvestris</i>	14	Good	Remove
773	985	Eastern White Cedar	<i>Thuja occidentalis</i>	10	Good	Remove
774	986	Scots Pine	<i>Pinus sylvestris</i>	10	Good	Remove
775	987	Scots Pine	<i>Pinus sylvestris</i>	12	Good	Remove
776	988	Scots Pine	<i>Pinus sylvestris</i>	12	Good	Remove
777	989	Scots Pine	<i>Pinus sylvestris</i>	16	Good	Remove
778	990	Scots Pine	<i>Pinus sylvestris</i>	10	Good	Remove
779	991	Scots Pine	<i>Pinus sylvestris</i>	12	Good	Remove
780	992	Scots Pine	<i>Pinus sylvestris</i>	12	Good	Remove
781	993	Red Ash	<i>Fraxinus pennsylvanica</i>	18	Poor	Remove
782	994	Scots Pine	<i>Pinus sylvestris</i>	28	Fair	Remove
783	995	Scots Pine	<i>Pinus sylvestris</i>	13	Good	Remove
784	996	Scots Pine	<i>Pinus sylvestris</i>	13	Good	Remove
785	997	Scots Pine	<i>Pinus sylvestris</i>	16	Good	Remove
786	998	Scots Pine	<i>Pinus sylvestris</i>	10	Good	Remove
787	999	Scots Pine	<i>Pinus sylvestris</i>	13	Good	Remove
788	1000	Scots Pine	<i>Pinus sylvestris</i>	15	Good	Remove
789	1001	Scots Pine	<i>Pinus sylvestris</i>	10	Good	Remove
790	1002	Scots Pine	<i>Pinus sylvestris</i>	17	Good	Remove
791	1003	Scots Pine	<i>Pinus sylvestris</i>	12	Good	Remove
792	1004	Eastern White Pine	<i>Pinus strobus</i>	22	Good	Remove
793	1005	Eastern White Pine	<i>Pinus strobus</i>	13	Good	Remove
794	1006	Eastern White Pine	<i>Pinus strobus</i>	20	Good	Remove
795	1007	Scots Pine	<i>Pinus sylvestris</i>	13	Good	Remove

796	1008	Trembling Aspen	<i>Populus tremuloides</i>	18	Good	Preserve
797	1009	Scots Pine	<i>Pinus sylvestris</i>	21	Good	Preserve
798	1010	Scots Pine	<i>Pinus sylvestris</i>	20	Dead	Preserve
799	1011	Black Cherry	<i>Prunus serotina</i>	19	Good	Preserve
800	1012	Black Cherry	<i>Prunus serotina</i>	17	Good	Preserve
801	1013	Trembling Aspen	<i>Populus tremuloides</i>	11	Good	Preserve
802	1014	Eastern White Pine	<i>Pinus strobus</i>	51,39	Fair	Preserve
803	1015	White Spruce	<i>Picea glauca</i>	16	Good	Preserve
804	1016	Red Ash	<i>Fraxinus pennsylvanica</i>	16	Poor	Remove
805	1017	Eastern White Pine	<i>Pinus strobus</i>	19	Good	Remove
806	1018	Scots Pine	<i>Pinus sylvestris</i>	20	Good	Remove
807	1019	Scots Pine	<i>Pinus sylvestris</i>	13	Good	Remove
808	1020	Scots Pine	<i>Pinus sylvestris</i>	17	Good	Remove
809	1021	Scots Pine	<i>Pinus sylvestris</i>	17	Good	Preserve
810	1022	Scots Pine	<i>Pinus sylvestris</i>	30	Good	Preserve
811	1023	Eastern White Cedar	<i>Thuja occidentalis</i>	18	Good	Preserve
812	1024	Eastern White Cedar	<i>Thuja occidentalis</i>	16	Good	Preserve
813	1025	Eastern White Cedar	<i>Thuja occidentalis</i>	16,11	Good	Preserve
814	1026	Eastern White Cedar	<i>Thuja occidentalis</i>	14	Good	Preserve
815	1027	Eastern White Cedar	<i>Thuja occidentalis</i>	16	Good	Preserve
816	1028	Scots Pine	<i>Pinus sylvestris</i>	16	Good	Remove
817	1029	Scots Pine	<i>Pinus sylvestris</i>	16	Good	Preserve
818	1030	Scots Pine	<i>Pinus sylvestris</i>	16	Good	Remove
819	1031	Scots Pine	<i>Pinus sylvestris</i>	12	Good	Remove
820	1032	Scots Pine	<i>Pinus sylvestris</i>	19	Good	Remove
821	1033	Scots Pine	<i>Pinus sylvestris</i>	30	Poor	Remove
822	1034	Scots Pine	<i>Pinus sylvestris</i>	19	Good	Preserve
823	1035	Scots Pine	<i>Pinus sylvestris</i>	14	Good	Preserve
824	1036	Eastern White Pine	<i>Pinus strobus</i>	18	Good	Preserve
825	1037	Scots Pine	<i>Pinus sylvestris</i>	10	Good	Preserve
826	1038	Scots Pine	<i>Pinus sylvestris</i>	16	Good	Preserve
827	1039	Scots Pine	<i>Pinus sylvestris</i>	18	Good	Preserve
828	1040	Scots Pine	<i>Pinus sylvestris</i>	11	Good	Preserve
829	1041	Scots Pine	<i>Pinus sylvestris</i>	15	Good	Preserve
830	1042	Scots Pine	<i>Pinus sylvestris</i>	19	Good	Preserve
831	1043	Scots Pine	<i>Pinus sylvestris</i>	19	Good	Preserve
832	1044	Scots Pine	<i>Pinus sylvestris</i>	17	Good	Preserve

833	1045	Scots Pine	<i>Pinus sylvestris</i>	13	Good	Preserve
834	1046	Scots Pine	<i>Pinus sylvestris</i>	32	Fair	Preserve
835	1047	Scots Pine	<i>Pinus sylvestris</i>	16	Good	Preserve
836	1048	Eastern White Cedar	<i>Thuja occidentalis</i>	10	Good	Preserve
837	1049	Scots Pine	<i>Pinus sylvestris</i>	11	Good	Remove
838	1050	Eastern White Pine	<i>Pinus strobus</i>	29	Good	Remove
839	1051	White Spruce	<i>Picea glauca</i>	17	Good	Preserve
840	1052	Eastern White Cedar	<i>Thuja occidentalis</i>	18,17,6	Fair	Preserve
841	1053	Scots Pine	<i>Pinus sylvestris</i>	11	Good	Preserve
842	1054	Eastern White Cedar	<i>Thuja occidentalis</i>	17	Good	Preserve
843	1055	Eastern White Cedar	<i>Thuja occidentalis</i>	17	Dead	Preserve
844	1056	Eastern White Cedar	<i>Thuja occidentalis</i>	16	Good	Preserve
845	1057	Eastern White Pine	<i>Pinus strobus</i>	69	Good	Remove
846	1058	White Spruce	<i>Picea glauca</i>	41	Good	Remove
847	1059	Eastern White Pine	<i>Pinus strobus</i>	11	Good	Preserve
848	1060	Eastern White Cedar	<i>Thuja occidentalis</i>	19	Good	Preserve
849	1061	Scots Pine	<i>Pinus sylvestris</i>	18	Good	Preserve
850	1062	Eastern White Cedar	<i>Thuja occidentalis</i>	10	Good	Preserve
851	1063	Eastern White Cedar	<i>Thuja occidentalis</i>	10	Good	Preserve
852	1064	Eastern White Cedar	<i>Thuja occidentalis</i>	11	Good	Preserve
853	1065	Eastern White Cedar	<i>Thuja occidentalis</i>	10	Good	Preserve
854	1066	Eastern White Cedar	<i>Thuja occidentalis</i>	10	Good	Preserve
855	1067	Scots Pine	<i>Pinus sylvestris</i>	30	Good	Remove
856	1068	Scots Pine	<i>Pinus sylvestris</i>	19	Good	Preserve
857	1069	White Spruce	<i>Picea glauca</i>	34	Good	Preserve
858	1070	Scots Pine	<i>Pinus sylvestris</i>	30	Good	Remove
859	1071	Eastern White Cedar	<i>Thuja occidentalis</i>	11	Good	Remove
860	1072	Scots Pine	<i>Pinus sylvestris</i>	11	Good	Remove
861	1073	Scots Pine	<i>Pinus sylvestris</i>	10	Good	Remove
862	1074	Scots Pine	<i>Pinus sylvestris</i>	25	Good	Remove
863	1074	Common Apple	<i>Malus pumila</i>	37	Poor	Preserve
864	1075	Eastern White Cedar	<i>Thuja occidentalis</i>	13	Good	Remove
865	1076	Scots Pine	<i>Pinus sylvestris</i>	10	Good	Remove
866	1078	Unknown Sp.	<i>Unknown sp.</i>	13	Dead	Remove
867	1079	Red Ash	<i>Fraxinus pennsylvanica</i>	32	Dead	Remove
868	1080	Eastern White Cedar	<i>Thuja occidentalis</i>	12	Good	Remove
869	1081	Staghorn Sumac	<i>Rhus typhina</i>	12	Poor	Preserve

870	1082	Staghorn Sumac	<i>Rhus typhina</i>	12	Poor	Preserve
871	1083	Staghorn Sumac	<i>Rhus typhina</i>	13	Poor	Preserve
872	1084	Staghorn Sumac	<i>Rhus typhina</i>	12	Poor	Preserve
873	1085	Trembling Aspen	<i>Populus tremuloides</i>	19	Poor	Preserve
874	1086	Trembling Aspen	<i>Populus tremuloides</i>	14	Good	Preserve
875	1086	White Spruce	<i>Picea glauca</i>	52	Dead	Preserve
876	1088	Scots Pine	<i>Pinus sylvestris</i>	19	Good	Preserve
877	1089	Scots Pine	<i>Pinus sylvestris</i>	16	Good	Preserve
878	1090	Scots Pine	<i>Pinus sylvestris</i>	18	Good	Preserve
879	1091	Scots Pine	<i>Pinus sylvestris</i>	25	Good	Preserve
880	1092	Scots Pine	<i>Pinus sylvestris</i>	46	Good	Preserve
881	1093	Scots Pine	<i>Pinus sylvestris</i>	17	Good	Preserve
882	1094	Eastern White Cedar	<i>Thuja occidentalis</i>	13,13	Fair	Preserve
883	1095	Scots Pine	<i>Pinus sylvestris</i>	14	Good	Preserve
884	1096	Scots Pine	<i>Pinus sylvestris</i>	10	Good	Preserve
885	1097	Eastern White Cedar	<i>Thuja occidentalis</i>	11	Good	Preserve
886	1098	Eastern White Cedar	<i>Thuja occidentalis</i>	10	Good	Preserve
887	1099	Eastern White Cedar	<i>Thuja occidentalis</i>	19	Good	Preserve
888	1100	Eastern White Cedar	<i>Thuja occidentalis</i>	10	Good	Preserve
889	1101	Eastern White Cedar	<i>Thuja occidentalis</i>	12	Good	Preserve
890	1102	Eastern White Cedar	<i>Thuja occidentalis</i>	15	Good	Preserve
891	1103	Scots Pine	<i>Pinus sylvestris</i>	23	Good	Preserve
892	1104	Scots Pine	<i>Pinus sylvestris</i>	20	Good	Preserve
893	1105	Scots Pine	<i>Pinus sylvestris</i>	11	Good	Preserve
894	1106	Scots Pine	<i>Pinus sylvestris</i>	21	Good	Preserve
895	1107	Scots Pine	<i>Pinus sylvestris</i>	15	Good	Preserve
896	1108	Scots Pine	<i>Pinus sylvestris</i>	15	Good	Preserve
897	1109	Eastern White Cedar	<i>Thuja occidentalis</i>	19	Good	Preserve
898	1110	Eastern White Cedar	<i>Thuja occidentalis</i>	15	Good	Preserve
899	1111	Eastern White Cedar	<i>Thuja occidentalis</i>	20	Good	Preserve
900	1112	Eastern White Cedar	<i>Thuja occidentalis</i>	13	Good	Preserve
901	1113	Eastern White Cedar	<i>Thuja occidentalis</i>	14	Good	Preserve
902	1114	Eastern White Cedar	<i>Thuja occidentalis</i>	19	Good	Preserve
903	1115	Eastern White Cedar	<i>Thuja occidentalis</i>	19	Fair	Preserve
904	1116	Eastern White Cedar	<i>Thuja occidentalis</i>	11	Good	Preserve
905	1117	Eastern White Cedar	<i>Thuja occidentalis</i>	18	Good	Preserve
906	1118	Scots Pine	<i>Pinus sylvestris</i>	13	Good	Preserve

907	1119	Eastern White Cedar	<i>Thuja occidentalis</i>	18	Good	Preserve
908	1120	Eastern White Cedar	<i>Thuja occidentalis</i>	15	Good	Preserve
909	1121	White Spruce	<i>Picea glauca</i>	15	Good	Preserve
910	1122	White Spruce	<i>Picea glauca</i>	15	Good	Preserve
911	1123	Scots Pine	<i>Pinus sylvestris</i>	10	Good	Preserve
912	1124	Eastern White Cedar	<i>Thuja occidentalis</i>	10	Good	Preserve
913	1125	Eastern White Cedar	<i>Thuja occidentalis</i>	11,10	Good	Preserve
914	1126	Eastern White Cedar	<i>Thuja occidentalis</i>	11	Good	Preserve
915	1127	Eastern White Cedar	<i>Thuja occidentalis</i>	10	Good	Preserve
916	1128	Eastern White Cedar	<i>Thuja occidentalis</i>	10	Good	Preserve
917	1129	Eastern White Cedar	<i>Thuja occidentalis</i>	10	Good	Preserve
918	1130	Scots Pine	<i>Pinus sylvestris</i>	10	Good	Preserve
919	1131	Eastern White Cedar	<i>Thuja occidentalis</i>	14	Good	Preserve
920	1132	Paper Birch	<i>Betula papyrifera</i>	12,10	Good	Preserve
921	1133	Paper Birch	<i>Betula papyrifera</i>	10,9	Good	Preserve
922	1134	Eastern White Cedar	<i>Thuja occidentalis</i>	12	Good	Preserve
923	1135	Eastern White Cedar	<i>Thuja occidentalis</i>	12	Good	Preserve
924	1136	Scots Pine	<i>Pinus sylvestris</i>	10	Good	Preserve
925	1137	Scots Pine	<i>Pinus sylvestris</i>	10	Good	Preserve
926	1138	Trembling Aspen	<i>Populus tremuloides</i>	10	Good	Preserve
927	1139	Eastern White Cedar	<i>Thuja occidentalis</i>	114	Good	Preserve
928	1141	Eastern White Cedar	<i>Thuja occidentalis</i>	11	Good	Preserve
929	1142	Eastern White Cedar	<i>Thuja occidentalis</i>	12	Good	Preserve
930	1143	Eastern White Cedar	<i>Thuja occidentalis</i>	12	Good	Preserve
931	1144	Eastern White Cedar	<i>Thuja occidentalis</i>	14	Good	Preserve
932	1146	Eastern White Cedar	<i>Thuja occidentalis</i>	14,13	Good	Preserve
933	1147	Eastern White Cedar	<i>Thuja occidentalis</i>	10,10	Good	Preserve
934	1148	Scots Pine	<i>Pinus sylvestris</i>	14	Good	Preserve
935	1149	Scots Pine	<i>Pinus sylvestris</i>	11	Good	Preserve
936	1150	Scots Pine	<i>Pinus sylvestris</i>	12	Good	Preserve
937	1151	Scots Pine	<i>Pinus sylvestris</i>	12	Good	Preserve
938	1152	Scots Pine	<i>Pinus sylvestris</i>	13	Good	Preserve
939	1153	Eastern White Cedar	<i>Thuja occidentalis</i>	12	Good	Preserve
940	1154	Scots Pine	<i>Pinus sylvestris</i>	17	Good	Preserve
941	1155	Scots Pine	<i>Pinus sylvestris</i>	20	Good	Preserve
942	1156	Eastern White Cedar	<i>Thuja occidentalis</i>	12	Good	Preserve
943	1157	Eastern White Cedar	<i>Thuja occidentalis</i>	13	Good	Preserve

944	1158	Scots Pine	<i>Pinus sylvestris</i>	17	Good	Preserve
945	1159	Eastern White Cedar	<i>Thuja occidentalis</i>	13	Good	Preserve
946	1160	Eastern White Cedar	<i>Thuja occidentalis</i>	16	Good	Preserve
947	1161	Scots Pine	<i>Pinus sylvestris</i>	20	Good	Preserve
948	1162	Scots Pine	<i>Pinus sylvestris</i>	11	Good	Preserve
949	1163	Eastern White Cedar	<i>Thuja occidentalis</i>	11	Good	Preserve
950	1164	Eastern White Cedar	<i>Thuja occidentalis</i>	13	Good	Preserve
951	1165	White Spruce	<i>Picea glauca</i>	13	Good	Preserve
952	1166	Scots Pine	<i>Pinus sylvestris</i>	13	Good	Preserve
953	1167	Scots Pine	<i>Pinus sylvestris</i>	10	Good	Preserve
954	1168	Eastern White Cedar	<i>Thuja occidentalis</i>	15	Good	Preserve
955	1169	Scots Pine	<i>Pinus sylvestris</i>	12	Good	Preserve
956	1170	Scots Pine	<i>Pinus sylvestris</i>	12	Good	Preserve
957	1171	Scots Pine	<i>Pinus sylvestris</i>	19	Good	Preserve
958	1172	Black Cherry	<i>Prunus serotina</i>	10	Good	Preserve
959	1173	Scots Pine	<i>Pinus sylvestris</i>	32	Good	Preserve
960	1174	Eastern White Cedar	<i>Thuja occidentalis</i>	10	Good	Preserve
961	-	Eastern White Pine	<i>Pinus strobus</i>	35	Good	Preserve
962	-	White Elm	<i>Ulmus americana</i>	20,20	Good	Preserve
963	-	White Spruce	<i>Picea glauca</i>	11	Good	Preserve
964	-	White Spruce	<i>Picea glauca</i>	25	Good	Preserve
965	-	Silver Maple	<i>Acer saccharinum</i>	90	Fair	Injure
966	-	Red Ash	<i>Fraxinus pennsylvanica</i>	35	Poor	Preserve
967	-	Red Ash	<i>Fraxinus pennsylvanica</i>	17	Poor	Preserve
968	-	Red Ash	<i>Fraxinus pennsylvanica</i>	22	Poor	Preserve
969	-	Red Ash	<i>Fraxinus pennsylvanica</i>	24	Poor	Preserve
970	-	Red Ash	<i>Fraxinus pennsylvanica</i>	19	Poor	Preserve
971	-	Red Ash	<i>Fraxinus pennsylvanica</i>	25	Poor	Remove
972	-	White Elm	<i>Ulmus americana</i>	80	Good	Injure
973	-	Eastern White Pine	<i>Pinus strobus</i>	25	Good	Preserve
974	-	Eastern White Pine	<i>Pinus strobus</i>	20	Good	Preserve
975	-	White Spruce	<i>Picea glauca</i>	13	Good	Preserve
976	-	Eastern White Pine	<i>Pinus strobus</i>	30	Good	Preserve
977	-	Eastern White Pine	<i>Pinus strobus</i>	30	Good	Preserve
978	-	White Spruce	<i>Picea glauca</i>	13	Good	Preserve
979	-	Eastern White Pine	<i>Pinus strobus</i>	18	Poor	Preserve
980	-	Eastern White Pine	<i>Pinus strobus</i>	24	Good	Preserve

981	-	Eastern White Pine	<i>Pinus strobus</i>	30	Good	Preserve
982	-	Eastern White Pine	<i>Pinus strobus</i>	25	Good	Preserve
983	-	Eastern White Pine	<i>Pinus strobus</i>	25	Good	Preserve
984	-	Eastern White Pine	<i>Pinus strobus</i>	15	Dead	Preserve
985	-	Red Ash	<i>Fraxinus pennsylvanica</i>	18	Poor	Preserve
986	-	Eastern White Pine	<i>Pinus strobus</i>	18	Good	Preserve
987	-	Austrian Pine	<i>Pinus nigra</i>	35	Good	Preserve
988	-	Austrian Pine	<i>Pinus nigra</i>	35	Good	Preserve
989	-	Austrian Pine	<i>Pinus nigra</i>	35	Good	Preserve
990	-	Austrian Pine	<i>Pinus nigra</i>	30	Good	Preserve
991	-	Silver Maple	<i>Acer saccharinum</i>	70	Good	Preserve
992	-	European Mountain Ash	<i>Sorbus aucuparia</i>	20	Poor	Preserve
993	-	Silver Maple	<i>Acer saccharinum</i>	70	Fair	Preserve
994	-	Silver Maple	<i>Acer saccharinum</i>	40	Fair	Preserve
995	-	Silver Maple	<i>Acer saccharinum</i>	110	Fair	Preserve
996	-	Eastern White Cedar	<i>Thuja occidentalis</i>	18	Good	Preserve
997	-	Eastern White Cedar	<i>Thuja occidentalis</i>	18	Good	Preserve
998	-	Eastern White Cedar	<i>Thuja occidentalis</i>	18	Good	Preserve
999	-	Eastern White Cedar	<i>Thuja occidentalis</i>	12	Good	Preserve
1000	-	Eastern White Cedar	<i>Thuja occidentalis</i>	20,20,20,20	Good	Preserve
1001	-	Eastern White Cedar	<i>Thuja occidentalis</i>	20,20,20,20	Good	Preserve
1002	-	Eastern White Cedar	<i>Thuja occidentalis</i>	20,20,20	Good	Preserve
1003	-	Eastern White Pine	<i>Pinus strobus</i>	35	Good	Preserve
1004	-	Blue Spruce	<i>Picea pungens</i>	35	Good	Preserve

Over 90% of the inventoried trees exhibited an overall fair to good health condition. Approximately 45% of the inventoried trees were comprised of the non-native species including Austrian pine, blue spruce, common apple, Douglas fir, European buckthorn, European mountain ash, hawthorne species, Manitoba maple and Scots pine. Almost all of the inventoried ash species were in poor health condition or dead due to emerald ash borer infestation.

4.1.1. Hazard Tree

No hazard trees were encountered in the inventoried area.

4.1.2. Species at Risk

No Species at Risk trees were encountered in the inventoried area.

4.2. Tree Preservation

The Town of Caledon recommends maintaining an area around each tree, referred to as the Tree Protection Zone (TPZ). The TPZ was calculated using the approximate canopy radius. 453 of the inventoried trees are recommended for preservation. Tree preservation hoarding is recommended to protect trees selected for preservation (Figure 2).

4.3. Tree Injury

12 of the inventoried trees may be injured to facilitate the proposed development (i.e., Tree ID 72, 74, 108, 122, 195, 308, 413, 536, 636, 661, 965 and 972). Any excavation occurring in the root zone of said trees should be done by hand and exposed roots should be cut with a disinfected blade by a qualified person following proper arboriculture standards (Section 6.2). Tree preservation hoarding is recommended to protect trees selected for injure (Figure 2).

4.4. Tree Removal

539 of the inventoried trees are recommended for removal as they are located in or near the proposed area of work. All of the inventoried trees proposed for removal are located on the subject property, except Tree ID 971 which is located in the Mount Pleasant Road right-of-way. Tree clearing should be completed in accordance with the *Migratory Birds Convention Act* (Section 6.7).

5.0 Conclusion

Based on the current site plan, 539 inventoried trees are recommended for removal. 420 compensation trees are required to offset for the loss of healthy non-invasive individuals (Section 6.1). All of the trees recommended for preservation are to be protected during the undertaking of the proposed development (Section 6.8). Any excavation occurring in the root zone of a retained tree should be done by hand and exposed roots should be cut cleanly with disinfected blades by a qualified person, where feasible (Section 6.2).

6.0 Recommendations

6.1. Compensation

Compensation will be required for all tree removals at a rate as determined by the Town's Tableland Tree Removal Compensation. Tree compensation planting will be in addition to the standard required planting. Based on the compensation ratio, 420 replacement trees are required to compensate for the removal of trees on the subject property. The proponent should consult with the associated landscape professional supplying and/or planting the trees to discuss the appropriate fertilizing, watering and/or mulching schedule. Deciduous trees should be planted in the spring, following thaw, or in the fall, during leaf-off until freeze-up. Conifers should be planted in the

spring until four weeks after deciduous trees have opened their leaves, or in the fall until freeze-up. All conifers should be inspected for girdling roots before planting. Conifers that have extensive girdling should not be used. Nursery stock trees should be planted as soon as possible after delivery.

6.2. Excavation

Any excavation occurring in the root zone of a retained tree should be done by hand and exposed roots should be cut cleanly with disinfected blades by a qualified person, where feasible.

6.3. Fertilization

Fertilization during the first year following the completion of site works is not recommended. Supplemental fertilization thereafter should be assessed and prescribed by a Certified Arborist or landscape professional accordingly.

6.4. Irrigation

An Irrigation Plan for the trees marked for preservation should be prepared by a Certified Arborist or landscape professional after appropriately assessing the magnitude of tree injury following the completion of any required root pruning, if applicable.

6.5. Monitoring

During construction and prior to final approval by the Town, the consulting Arborist along with appropriate Town staff may intermittently inspect the entire site. Any noted hazardous trees must be identified and removed prior to Assumption or earlier if deemed hazardous at the sole cost of the Owner/Applicant. Any records of maintenance or removals are to be submitted to the Town.

6.6. Root Zone Aeration

Aerating the root zone of preserved trees may have the ability to reduce stress caused by soil compaction. The need for root zone aeration should be assessed and prescribed by a Certified Arborist following the completion of site works accordingly.

6.7. Sensitive Timing Window

As a precaution to protect breeding migratory birds, vegetation clearing should not occur between April 5 and August 28 of any given year unless otherwise directed by a biologist at the time of clearing.

6.8. Tree Preservation

Tree preservation hoarding is recommended to protect trees selected for injure and preservation. The location of tree preservation hoarding has been depicted for reference (Figure 2). The tree preservation hoarding should be erected prior to the onset of siteworks and must remain in place for the duration of all construction activity. There should be no disturbance (e.g., digging, trenching, compaction, changes in grade or other soil disturbance) beyond the limits of tree preservation hoarding. Fill should never be placed beyond the limits of the tree preservation hoarding. The proponent is responsible for ensuring that tree preservation hoarding is maintained throughout all phases of construction in the location and condition as approved by the Town of Caledon.

6.9. Tree Removal

Tree removal should be completed in a manner that does not contravene the *Migratory bird Convention Act*. Tree removal should be completed by a qualified professional and in a manner that does not cause injury or damage to trees marked for preservation.

7.0 References

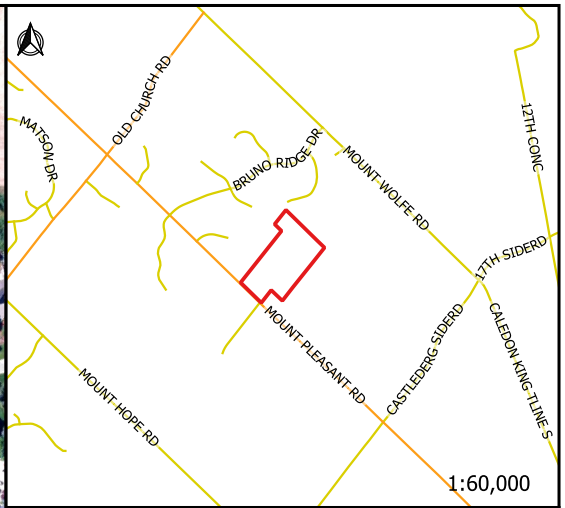
R.S.O. 1990, c. P.13. Planning Act.
S.C. 1994, c.22. Migratory Birds Convention Act.
S.O. 2007, c. 6. Endangered Species Act.
Region of Peel Official Plan (office consolidation 2022).
Town of Caledon by-law No. 2000-100.
Town of Caledon Official Plan (office consolidation 2024).
Town of Caledon, n.d. Terms of Reference: Tree Preservation.

Limitations:


This report was prepared using the most current site plan provided to Sumac's office. The conclusion and recommendations provided herein may no longer be applicable should changes be made to the site plan following submission of this report. The assessment provided herein is valid at the time of inspection.

Disclaimer:

Other than by the addressee, copying or distribution of this document, in whole or in part, is not permitted without the express written consent of Sumac Environmental Consulting.



Legend

 Subject Property

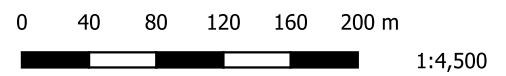
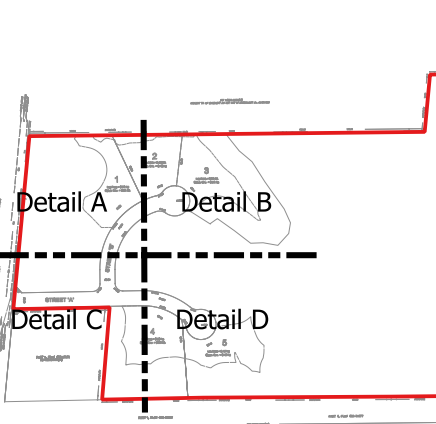
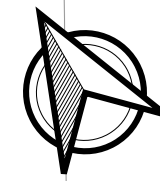


Figure 1: Subject Property



Designed by: N.F.
Date: 08/09/2024
Project: SEC 22-015



1:10,000

- Legend:
- Subject Property
 - Tree to be Retained
 - X Tree to be Removed
 - X Hazard Tree to be Removed
 - Canopy/ Tree Protection Zone
 - Tree Preservation Hoarding
 - Area of Work

Note:

Approved by:



Cassandra Fligg
ISA Certified Arborist
ON-2527A

Signature:

Fligg

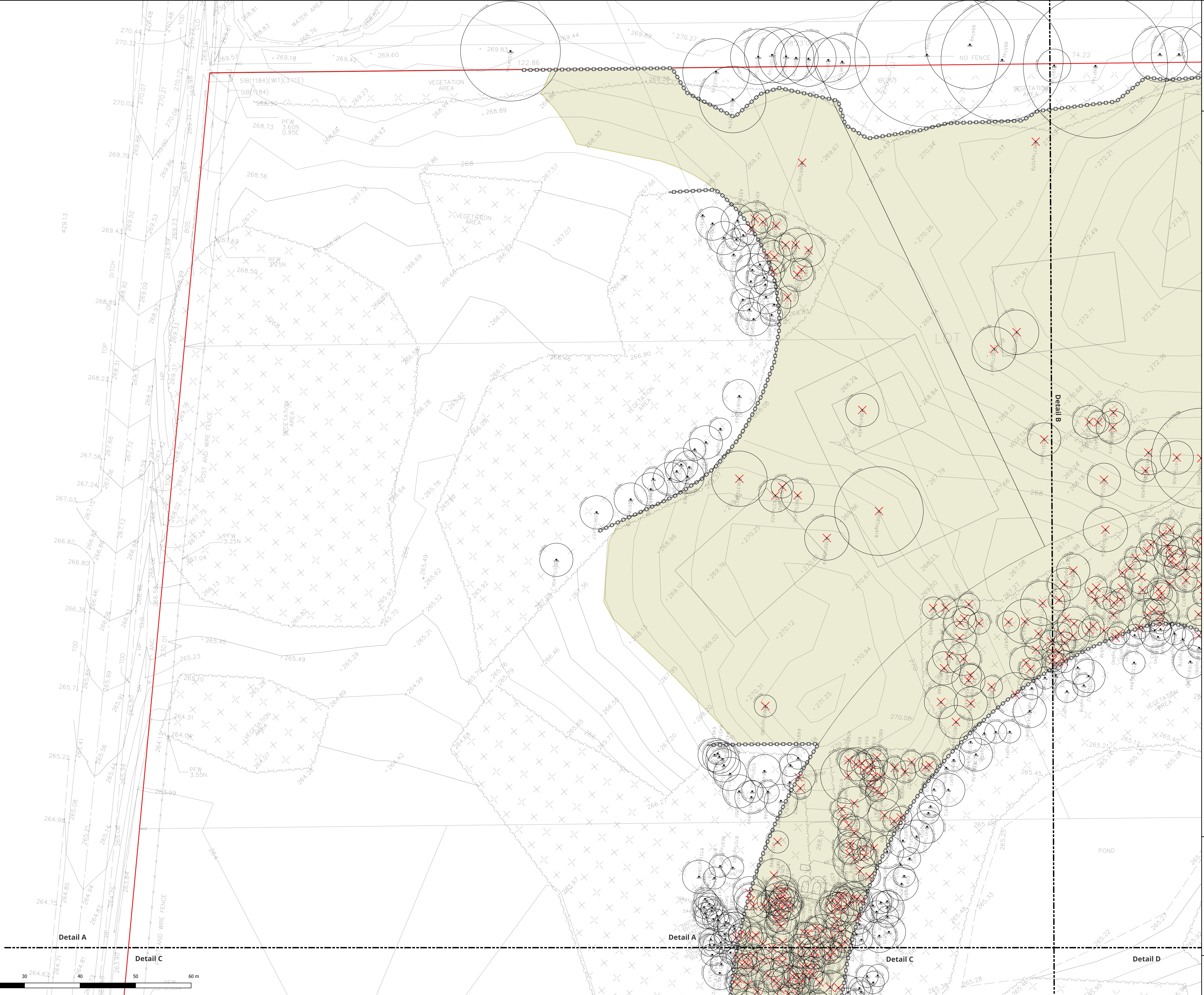
Date:

September 5, 2024

Tree Inventory and Preservation Plan Part 1 of 8

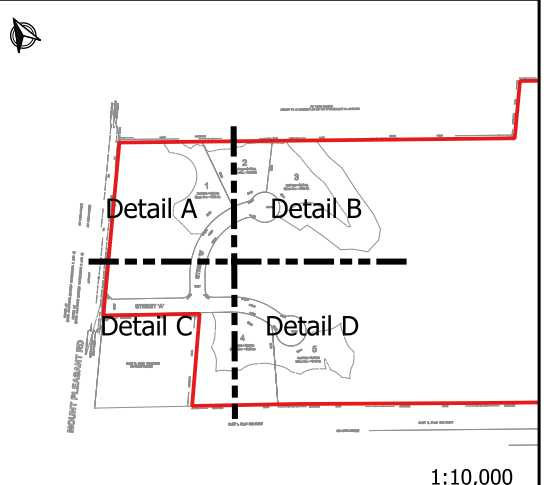
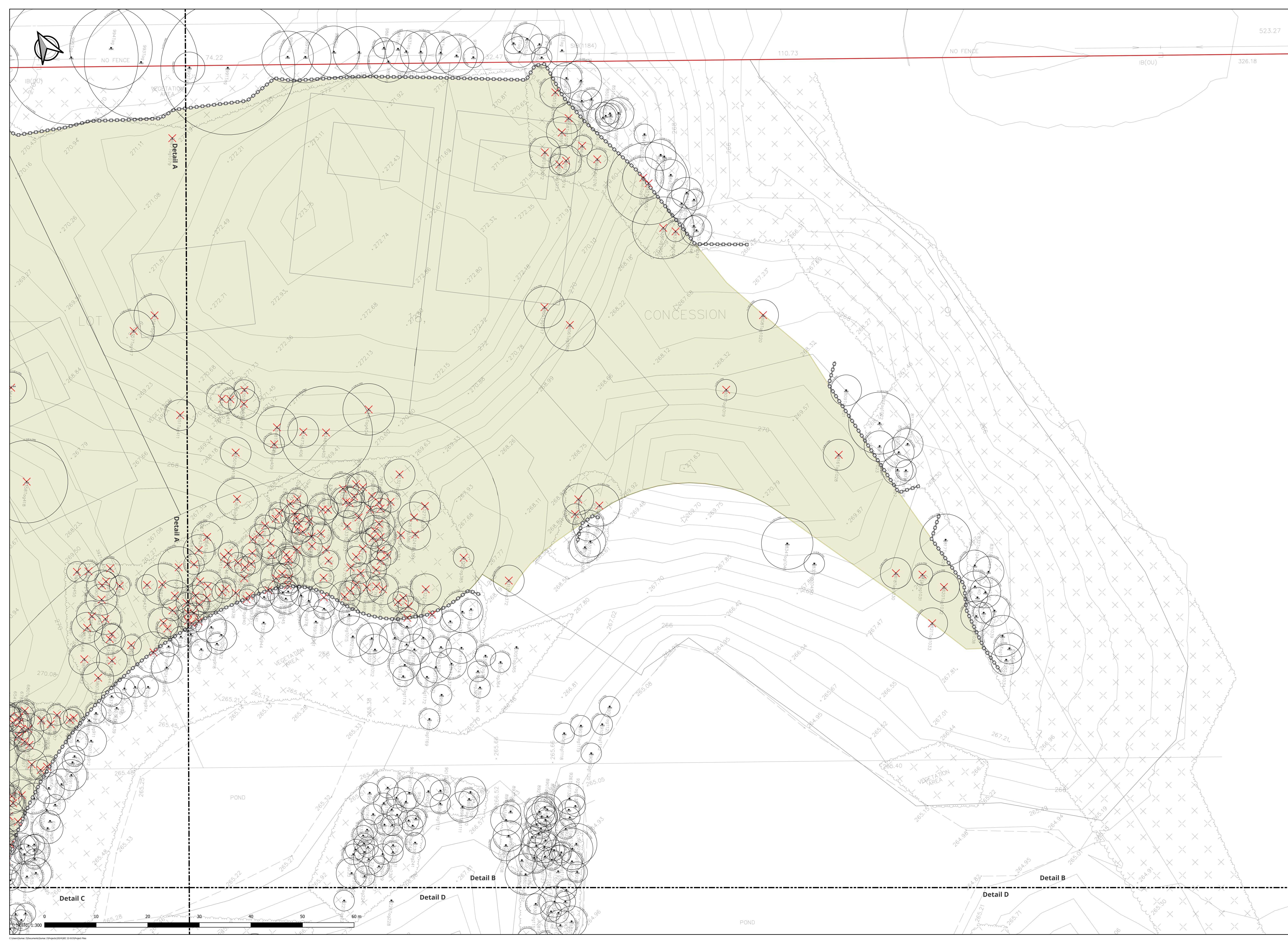


Designed by: N.F.
Date: 09/04/2024
Project: SEC 22-015



NOWN AS MOUNT PLEASANT ROAD
DISTANCE BETWEEN CONCESSIONS 8 AND 9)

Scale: 1:300



1:10,000

- Legend:
- Subject Property
 - Tree to be Retained
 - X Tree to be Removed
 - X Hazard Tree to be Removed
 - Canopy/ Tree Protection Zone
 - Tree Preservation Hoarding
 - Area of Work

Note:

Approved by:



Cassandra Fligg
ISA Certified Arborist
ON-2527A

Signature:

Fligg

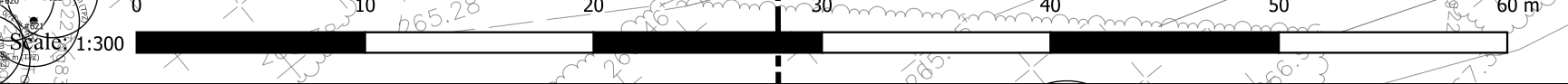
Date:

September 5, 12024

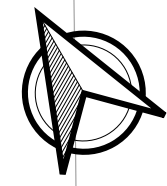
**Tree Inventory and Preservation Plan
Part 2 of 8**



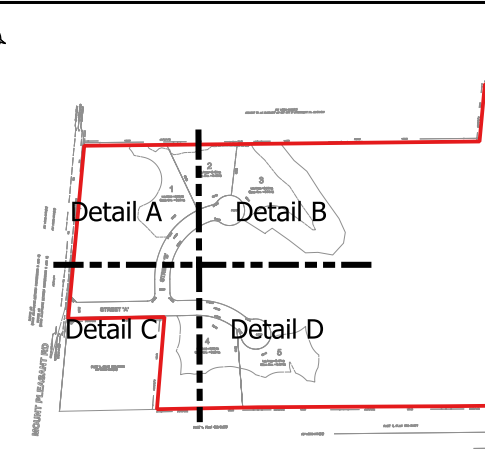
Designed by: N.F.
Date: 09/04/2024
Project: SEC 22-015



Scale: 1:300



KNOWN AS MOUNTAIN ROAD
(ROAD ALLOWANCE BETWEEN ...)



1:10,000

- Legend:
- Subject Property
 - Tree to be Retained
 - X Tree to be Removed
 - X Hazard Tree to be Removed
 - Canopy/ Tree Protection Zone
 - Tree Preservation Hoarding
 - Area of Work

Note:

Approved by:



Cassandra Fligg
ISA Certified Arborist
ON-2527A

Signature:

C. Fligg

Date:

September 5, 2024

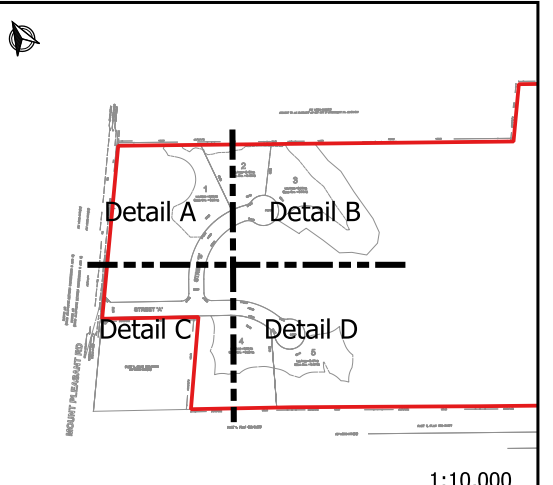
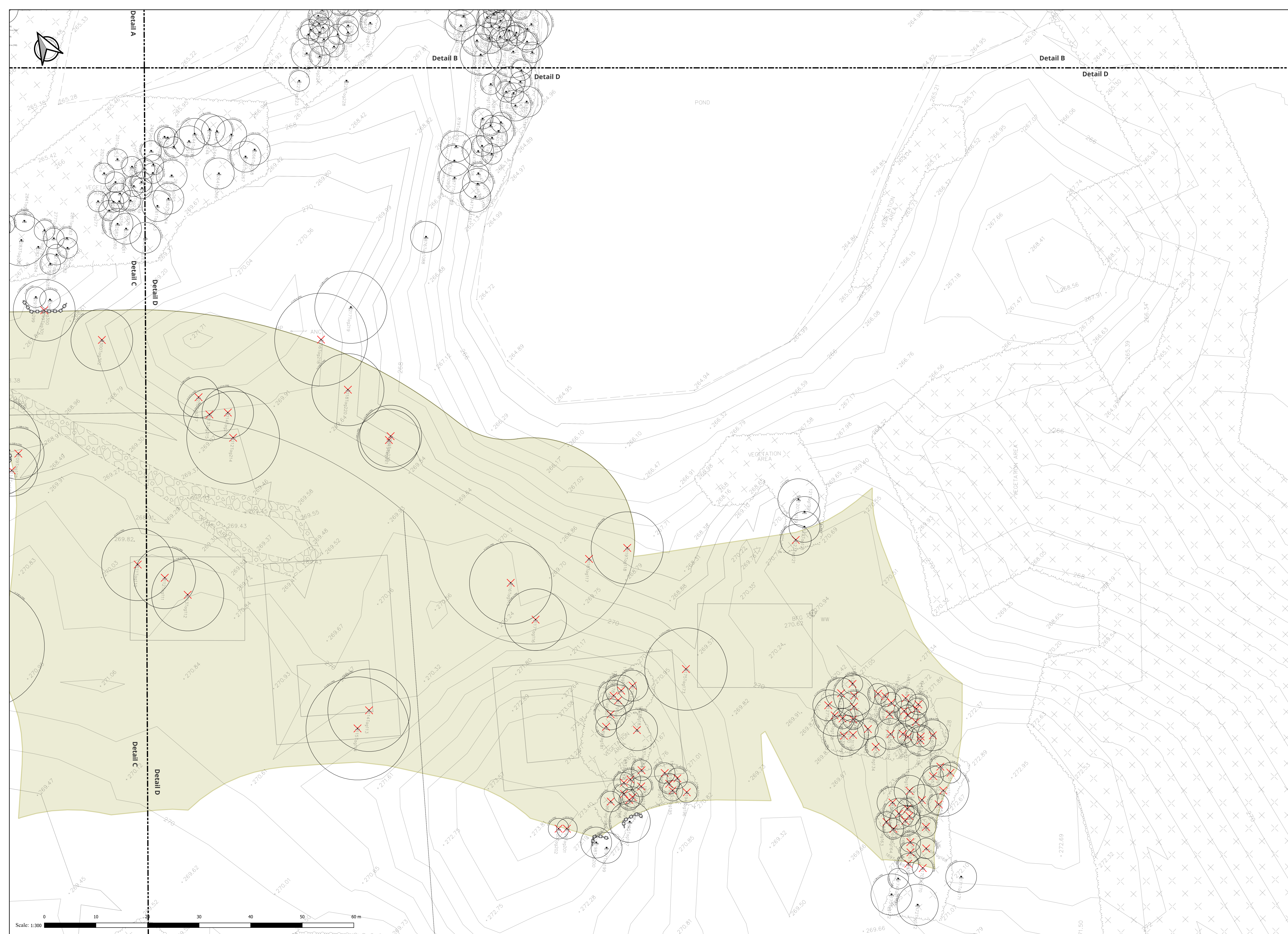
**Tree Inventory and Preservation Plan
Part 3 of 8**



Designed by: N.F.
Date: 09/04/2024
Project: SEC 22-015



Scale: 1:300



1:10,000

- Legend:
- Subject Property
 - Tree to be Retained
 - X Tree to be Removed
 - X Hazard Tree to be Removed
 - Canopy/ Tree Protection Zone
 - Tree Preservation Hoarding
 - Area of Work

Note:

Approved by:



Cassandra Fligg
ISA Certified Arborist®
ON-2527A

Signature: *Fligg*

Date: September 5, 2024

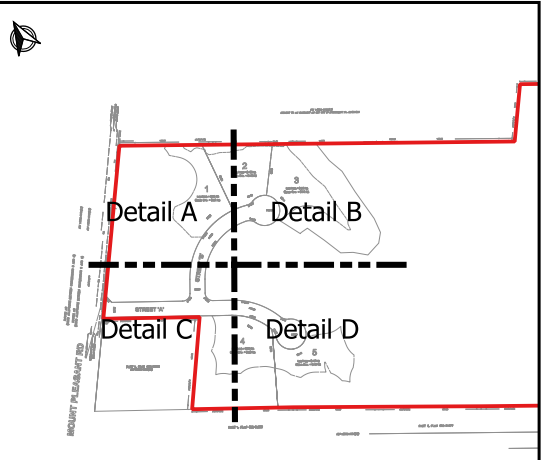
**Tree Inventory and Preservation Plan
Part 4 of 8**

Tree Inventory

Table with 11 columns: Tree ID, Tag No., Common Name, Scientific Name, DBH (cm), Approxim Crown Radius/Tr Protection Zone (m), Health, Comments, Hazard, Recommendation, Ownership. Rows 1-118.

Table with 11 columns: Tree ID, Tag No., Common Name, Scientific Name, DBH (cm), Approxim Crown Radius/Tr Protection Zone (m), Health, Comments, Hazard, Recommendation, Ownership. Rows 119-229.

Table with 11 columns: Tree ID, Tag No., Common Name, Scientific Name, DBH (cm), Approxim Crown Radius/Tr Protection Zone (m), Health, Comments, Hazard, Recommendation, Ownership. Rows 230-352.



1:10,000

Note:

Approved by:



Signature: Cassandra Fligg

Date:

September 5, 2024

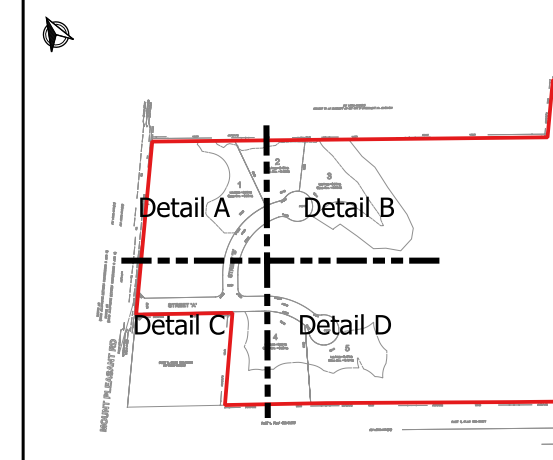
Tree Inventory and Preservation Plan Part 5 of 8

Tree Inventory

Table with 13 columns: Tree ID, Tag No., Common Name, Scientific Name, DBH (cm), Approxim Crown Radius/Tr Protection Zone (m), Health, Comments, Hazard, Recommendation, Ownership. Contains data for trees 353 to 479.

Table with 13 columns: Tree ID, Tag No., Common Name, Scientific Name, DBH (cm), Approxim Crown Radius/Tr Protection Zone (m), Health, Comments, Hazard, Recommendation, Ownership. Contains data for trees 480 to 606.

Table with 13 columns: Tree ID, Tag No., Common Name, Scientific Name, DBH (cm), Approxim Crown Radius/Tr Protection Zone (m), Health, Comments, Hazard, Recommendation, Ownership. Contains data for trees 607 to 732.



Note:



Signature: [Handwritten Signature]

Date: September 5, 2024

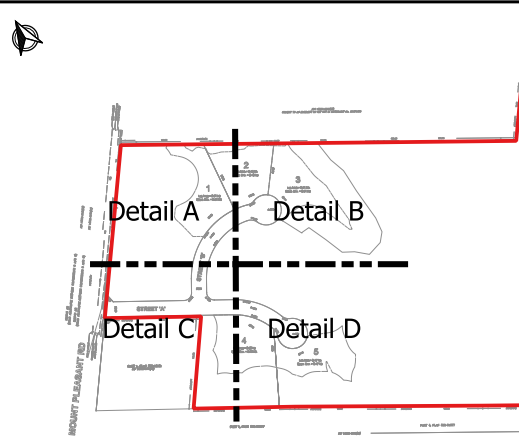
Tree Inventory and Preservation Plan Part 6 of 8

Tree Inventory

Table with 13 columns: Tree ID, Tag No., Common Name, Scientific Name, DBH (cm), Approxim Crown Radius/Tr Protection Zone (m), Health, Comments, Hazard, Recommendation, Ownership. Contains 854 rows of tree data.

Table with 13 columns: Tree ID, Tag No., Common Name, Scientific Name, DBH (cm), Approxim Crown Radius/Tr Protection Zone (m), Health, Comments, Hazard, Recommendation, Ownership. Contains 854 rows of tree data.

Table with 13 columns: Tree ID, Tag No., Common Name, Scientific Name, DBH (cm), Approxim Crown Radius/Tr Protection Zone (m), Health, Comments, Hazard, Recommendation, Ownership. Contains 25 rows of tree data.



1:10,000

Note:

Approved by:



Cassandra Fligg
ISA Certified Arborist®
ON-2527A

Signature:

Date:

September 5, 2024

Tree Inventory and
Preservation Plan
Part 7 of 8



Designed by: N.F.
Date: 09/04/2024
Project: SEC 22-015

Tree Preservation Specification

TREE PROTECTION FENCING TO BE ERECTED AS INDICATED ON THE LANDSCAPE PLAN AND SHALL REMAIN INTACT UNTIL DIRECTED BY TOWN STAFF.

STANDARD 1200mm HIGH SNOW FENCE SECURED TO T-BAR STAKES AT MIN. 2400mm O.C.

FINISHED GRADE

UNDISTURBED SOIL

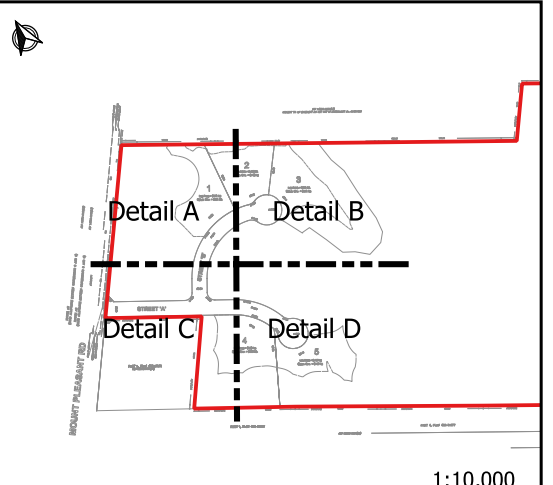
1200

DRIPLINE

SPECIFICATIONS FOR THE PROTECTION AND PRESERVATION OF EXISTING VEGETATION:

- PRIOR TO ISSUANCE OF THE GRADING AND SERVICING OR BUILDING PERMIT, ALL EXISTING TREES THAT ARE TO BE PRESERVED SHALL BE FULLY PROTECTED WITH HOARDING (IE SNOW FENCING) OUTSIDE THEIR DRIPLINES, OR AS DIRECTED THROUGH ADDITIONAL GOVERNING DOCUMENTS TO THE SATISFACTION OF THE TOWN.
- GROUPS OF TREES AND OTHER EXISTING PLANTINGS TO BE PROTECTED SHALL BE TREATED IN A LIKE MANNER WITH HOARDING AROUND THE ENTIRE CLUMP(S).
- TREE PRESERVATION FENCE IS TO BE INSPECTED BY THE CONSULTING ARBORIST OR LANDSCAPE ARCHITECT AND APPROVED BY THE TOWN PRIOR TO CONSTRUCTION COMMENCING.
- SILTATION CONTROL FENCING MAY BE USED AS A TREE PRESERVATION FENCING SUBSTITUTE IF REQUIRED BY ENGINEERING AT THE DISCRETION OF THE TOWN.
- AREAS WITHIN PROTECTIVE FENCING SHALL REMAIN UNDISTURBED AND SHALL NOT BE USED FOR THE STORAGE OF BUILDING MATERIALS OR EQUIPMENT. NO CONTAMINANTS SHALL BE DUMPED OR FLUSHED WHERE FEEDER ROOTS OF TREES EXIST. NO GARBAGE OR BUILDING MATERIALS ARE TO BE PLACED ON OR AGAINST THE TREE PRESERVATION FENCE.
- PRUNE BRANCHES TO REMOVE DAMAGED LIMBS ONLY. DO NOT DAMAGE LEADERS. ALL CUTS OVER 25mm SHALL BE TREATED IN ACCORDANCE WITH APPROPRIATE HORTICULTURAL PRACTICES AS APPROVED BY THE TOWN. NO MORE THAN 20% OF THE TREE SHALL BE PRUNED UNLESS DIRECTED BY THE TOWN.
- CUTTING OF ROOTS OR CHANGING OF GRADES AROUND EXISTING TREES TO BE PRESERVED WILL NOT BE PERMITTED WITHOUT THE APPROVAL OF THE PUBLIC WORKS AND ENGINEERING DEPARTMENT.
- IF TREES ARE BEING ADVERSELY AFFECTED BY CONSTRUCTION, A WATERING AND FERTILIZING PROGRAM IS TO BE SET UP TO THE SATISFACTION OF THE TOWN.
- PRIOR TO FINAL APPROVAL TREES THAT HAVE DIED OR HAVE BEEN DAMAGED BEYOND REPAIR PRIOR DURING OR POST CONSTRUCTION SHALL BE REMOVED AND REPLACED WITH TREES OF A SIZE AND SPECIES APPROVED BY THE TOWN, AT THE SOLE COST OF THE DEVELOPER.

TOWN OF CALEDON				APPR'D:	C.C.	DATE: JUNE 08
TREE PRESERVATION	3	STANDARD 707 NOW 606		JAN 18		
	2	STANDARD No. 1136 NOW 707, NOTES EDIT		JUNE 08	DRAWN: abal	SCALE: NTS
	1	NOTE NO. 9 ADDED		MARCH 08		
	NO.	REVISION	APR'D	DATE	STANDARD No. 606	



SPECIFICATIONS

A. General

The following Tree Preservation and Protection Measures will be undertaken to help eliminate and/or significantly reduce construction injury to all trees recommended for preservation. All temporary tree protection measures cited for retained trees must comply with the Town of Caledon Tree Protection Specifications and Details. Any variation from the standard tree protection measures must be approved in writing by the Town of Caledon.

B. Pre-Construction Phase

- Prior to construction, the trees to be preserved shall be protected with a Tree Protection Barrier. The barrier shall consist of 1.2m (4ft) high orange plastic snow fence wired to T-bars (see Town of Caledon Tree Preservation Fencing, STD 606).
- If applicable, attach a filter cloth 600mm high to the construction side of the hoarding to act as sediment control. Sediment control fencing shall meet or exceed OPSD-219.110, and be installed to the satisfaction of the Town of Caledon.
- All supports and bracing used to safely secure the barrier should be located outside the Tree Protection Zone (TPZ). All supports and bracing should minimize damage to roots.
- The TPZ fence is to be installed along the edge of the tree protection zones. This hoarding is to remain in place and remain in good condition throughout the entire duration of the project. Dismantling the tree protection barrier prior to approval by the Town of Caledon staff may constitute a contravention.
- The applicant shall notify the Town of Caledon and the consulting certified arborist or landscape architect to confirm that the tree protection barriers are in place.

- Where fill or excavated material must be temporarily located near a TPZ, a wooden barrier must be used to ensure no material enters the TPZ.
- Remove any garbage and foreign debris from the tree protection zones, daily.
- For the trees that were recommended for removal and/or crown pruning that are within the TPZ limits, these activities are to be performed by a qualified ISA certified arborist prior to the installation of the Tree Protection Zone barriers and prior to the commencement of any construction activities. Install the Tree Protection Zone barrier as per Tree Preservation Fencing, STD 606 at the limits shown on the tree inventory and protection plan after the tree removal, whichever is greater, and crown pruning activities are completed.
- A **Tree Protection Zone** sign must be mounted on all sides of the tree protection barrier for the duration of site construction. The sign should be a minimum of 40cm x 60cm and made of white gator board or equivalent material.
- The sign must be similar to the illustration shown below, or as directed by the Town of Caledon.

TREE PROTECTION ZONE

No work is permitted in the Tree Protection Zone

This includes construction works, grading, storage of trash or materials.

The tree protection barrier must not be removed without written authorization of the Town of Caledon.

- All contractors and site visitors should be informed of the tree preservation and protection measures at a pre-construction meeting.

specifications continued on next panel...

TOWN OF CALEDON				APPR'D:	B.B.	DATE: AUGUST 17
TREE PRESERVATION						
					DRAWN: B.M.	SCALE: NTS
	NO.	REVISION	APR'D	DATE	STANDARD No. 710	

SPECIFICATIONS continued from previous panel

C. During Construction Phase

- All areas within the TPZ shall remain undisturbed for the duration of construction. There will be no grade changes, dumping, and storage of any materials, structures or equipment within these areas. The Tree Protection Barrier must not be removed without the written authorization of the Town of Caledon.
- Minor grading works will be permitted at the edge of the preservation zone as required to correct localized depressions, and blend to existing grades. This work to be undertaken under the direct supervision of an ISA certified arborist.
- A certified ISA arborist will undertake proper root pruning in accordance with acceptable arboriculture practices when and if roots of retained trees are to be exposed, damaged, or severed by construction work. The exposed roots will be backfilled with appropriate material as soon as possible to prevent desiccation. Root pruning prior to excavation will help prevent necessary damage to tree roots. The use of low pressure hydrovac to expose roots is recommended, at no additional cost.
- The Town of Caledon must be notified for all work that impacts the TPZ for temporary removal of a section of hoarding to gain access for fine grading or other works. All works are to be supervised by the Town of Caledon. No cables, wire or ropes of any kind shall be wrapped around or installed in trees to be preserved.
- No contaminants will be dumped or flushed in the TPZ areas or where feeder roots of trees exist (generally beyond the TPZ areas).
- Irrigate tree protection zones during drought conditions, June to September to reduce drought stress.
- Inspect the site daily to ensure hoarding is in place and in good condition. Inspect trees to monitor condition.

D. Post Construction Phase

- Following the completion of all site works including landscaping, and after review and approval by the Town of Caledon staff, the protective hoarding may be removed.
- After removal of the protective hoarding, the Tree Preservation Zones shall be inspected by the Town of Caledon staff. Any remaining dead, diseased, or hazardous limbs or trees are to be removed by an ISA certified arborist as directed by the consulting arborist or Town of Caledon staff.

end of specifications

TOWN OF CALEDON				APPR'D:	B.B.	DATE: AUGUST 17
TREE PRESERVATION						
					DRAWN: B.M.	SCALE: NTS
	NO.	REVISION	APR'D	DATE	STANDARD No. 711	

Note:

Approved by:



Signature: *Cassandra Fligg*

Date: September 5, 2024