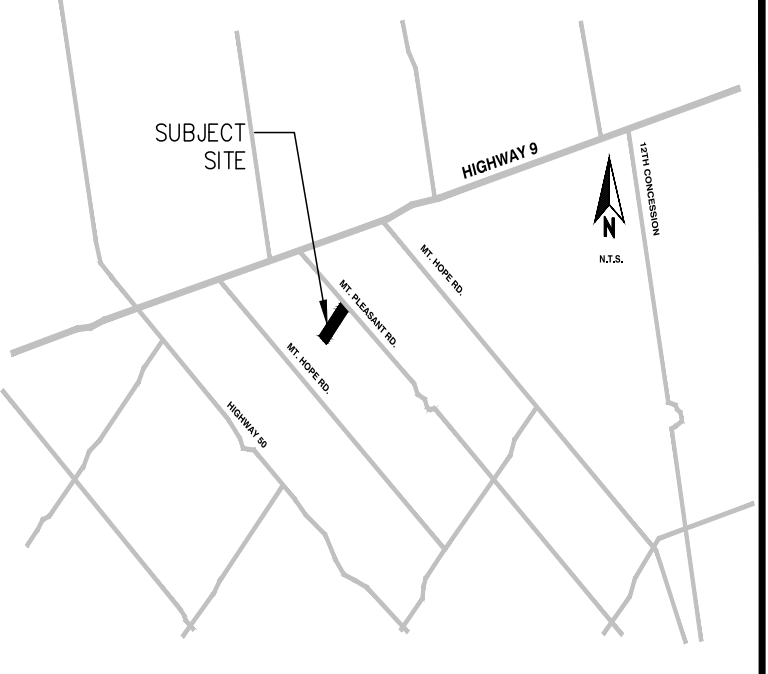
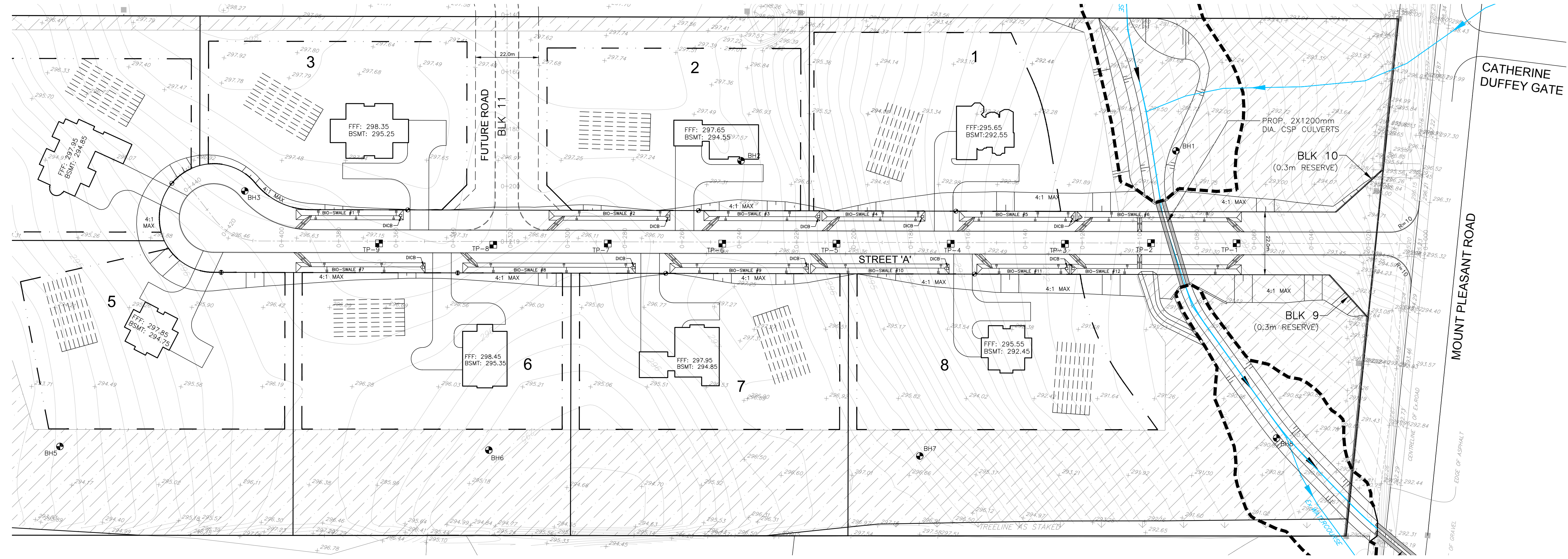


**TOWN OF CALEDON**  
**PLANNING**  
**RECEIVED**  
**August 26, 2020**

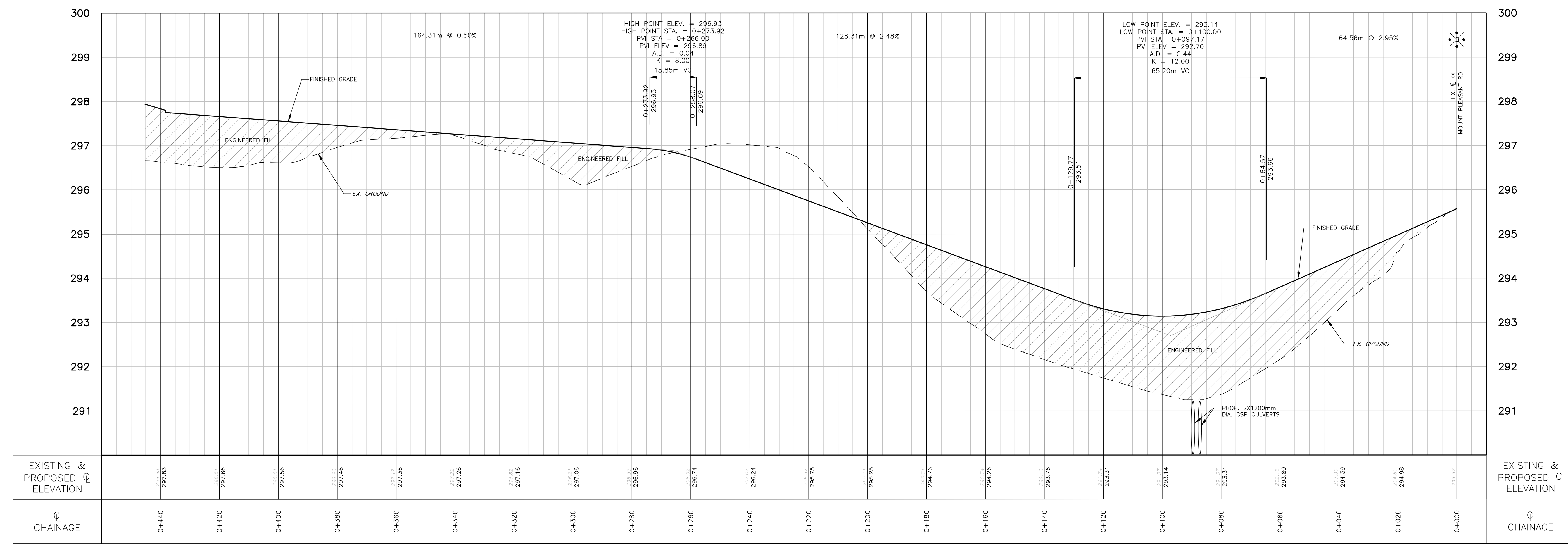


- KEY PLAN**  
N.T.S.
- LEGEND:**
- +201.08— EXISTING ELEVATION
  - - - - - 188.5 - - - - - EXISTING CONTOUR
  - ↘ DRAINAGE FLOW DIRECTION AND SLOPE
  - X 126.50 PROPOSED ELEVATION
  - FFF FINISHED FIRST FLOOR ELEVATION
  - BSMT BASEMENT ELEVATION
  - STORM MANHOLE
  - CATCHBASIN
  - ⊕ VALVE AND BOX
  - ⊕ HYD&V
  - ⊕ BH7 BOREHOLE LOCATION
  - TP-4 TEST PIT LOCATION
  - ↔ PROP. OVERLAND FLOW DIRECTION
  - WATER SERVICE CONNECTION
  - ▨ SEPTIC TILE BED
  - - - - - STRUCTURAL ENVELOPE
  - ▨ ENVIRONMENTAL PROTECTION
  - ▨ REFORESTED / PROTECTION AREA

**NOTE:**  
 THIS PLAN HAS BEEN PREPARED IN CONJUNCTION WITH THE FUNCTIONAL SERVICES REPORT TO DEMONSTRATE FEASIBILITY OF THE PROPOSED DEVELOPMENT IN CONJUNCTION WITH THE DRAFT PLAN OF SUBDIVISION APPLICATION. DETAILED DESIGNS WILL BE PREPARED AT THE DETAILED SUBDIVISION ENGINEERING DESIGN STAGE.

**METRIC:**  
 DISTANCES AND COORDINATES SHOWN ON THIS PLAN ARE IN METERS AND CAN BE CONVERTED TO FEET BY DIVIDING BY 0.3048.

- SURVEY NOTE:**
- BEARINGS ARE GRID BEARINGS AND ARE DERIVED FROM GPS OBSERVATIONS AND ARE REFERRED TO THE UTM PROJECTION, ZONE 17, NAD 83 (CSRS-2010) ADJUSTMENT.
  - DISTANCES SHOWN ON THIS PLAN ARE ADJUSTED GROUND DISTANCES AND CAN BE CONVERTED TO GRID DISTANCES BY MULTIPLYING BY AN AVERAGED COMBINED SCALE FACTOR OF 0.999671.
  - COORDINATES ON THIS PLAN ARE ADJUSTED GROUND COORDINATES AND ARE BASED ON GPS OBSERVATIONS FROM A NETWORK OF PERMANENT GPS REFERENCE STATIONS.
  - THIS SURVEY WAS COMPLETED ON AUGUST 3, 2017 BY VAN HARTEN SURVEYING INC.



NO.	DATE	REVISIONS	BY
2	AUG 07/20	AS PER TOWN COMMENTS	D.G.
1	OCT 25/19	AS PER TOWN, REGION AND MVCA COMMENTS	D.G.

**PRELIMINARY**

**VALDOR ENGINEERING INC.**  
 Consulting Engineers - Project Managers  
 241 Townline Drive, Suite 3, Woodbridge, Ontario, L4L 8W7  
 T: 905.854.0054 Fax: 905.854.0059  
 E-MAIL: info@valdor-engineering.com  
 www.valdor-engineering.com

**ESTATE RESIDENTIAL SUBDIVISION**  
**MOUNT PLEASANT ROAD**  
 TOWN OF CALEDON  
 REGION OF PEEL  
 TOWN FILE NO.: Z11-18-002C & RZ-18-006C

**PRELIMINARY**  
**PLAN AND PROFILE**  
**STREET 'A'**  
 STA 0+000.00 TO STA. 0+445.28

SCALE: H 1:750 V 1:50	DATE OF DWG. MAY 17, 2018	PROJECT NO. 17122
DRAWN BY: E.T.	DRAWING NO. <b>PP-1</b>	
CHKD BY: D.G.		