

LEVEL 1
UNITS 1 TO 72
INCLUSIVE

REGISTERED IN THE LAND REGISTRY OFFICE FOR THE
LAND TITLES DIVISION OF PEEL
ON 03/14/2025 AT 10:00 AM ON THE _____ DAY OF _____ 2025.

REPRESENTATIVE FOR LAND REGISTRY

SURVEYOR'S CERTIFICATE

- I CERTIFY THAT:
- THIS SURVEY AND PLAN ARE CORRECT AND IN ACCORDANCE WITH THE CONDOMINIUM ACT 1998, THE SURVEY ACT, THE SURVEYORS ACT, THE LAND TITLES ACT AND THE REGULATIONS MADE UNDER THEM.
- THE SURVEY WAS COMPLETED ON THE 14th DAY OF FEBRUARY 2025.
- THE DIAGRAMS OF THE UNITS SHOWN ON THIS PLAN ARE SUBSTANTIALLY ACCURATE.

DATE: _____
THIS PLAN OF SURVEY RELATES TO A/LS PLAN SUBMISSION FORM NUMBER XXXXXXXX
DECLARATION REGISTERED AS No. _____

PLAN OF SURVEY OF
BLOCK 158
REGISTERED PLAN 43M-2112
TOWN OF CALEDON
REGIONAL MUNICIPALITY OF PEEL
SCALE 1 : 250
J.D. BARNES LIMITED

METRIC DISTANCES SHOWN ON THIS PLAN ARE IN METRES AND
CAN BE CONVERTED TO FEET BY DIVIDING BY 0.3048.

LEGEND

- DN DENOTES DOWN
- UP DENOTES UP
- FINISH DENOTES FINISH
- CONCRETE DENOTES CONCRETE
- ASPHALT DENOTES ASPHALT
- WOOD DENOTES WOOD
- STAIRS DENOTES STAIRS

ALL BUILDING DIMENSIONS WERE MEASURED TO THE CONCRETE FOUNDATION,
UNLESS NOTED OTHERWISE.
ALL INTERNAL BUILDING MEASUREMENTS ARE FROM FACE OF DRYWALL TO FACE OF DRYWALL,
UNLESS NOTED OTHERWISE.

CERTIFICATE OF DECLARANT

THIS IS TO CERTIFY THAT THE PROPERTY INCLUDED IN THIS PLAN HAS
BEEN LAYED OFF AND LOTS AND COMMON ELEMENTS IN ACCORDANCE
WITH MY INSTRUCTIONS.

FERNBROOK HOMES (MCLAUGHLIN ONE) LTD.

EMITTED AT _____ DAY OF _____ 2025. _____
JOE SALVATORE
(PRESIDENT AND CEO)
I HAVE THE AUTHORITY TO BIND THE CORPORATION

TOWN OF CALEDON
PLANNING
RECEIVED
February 25th, 2025

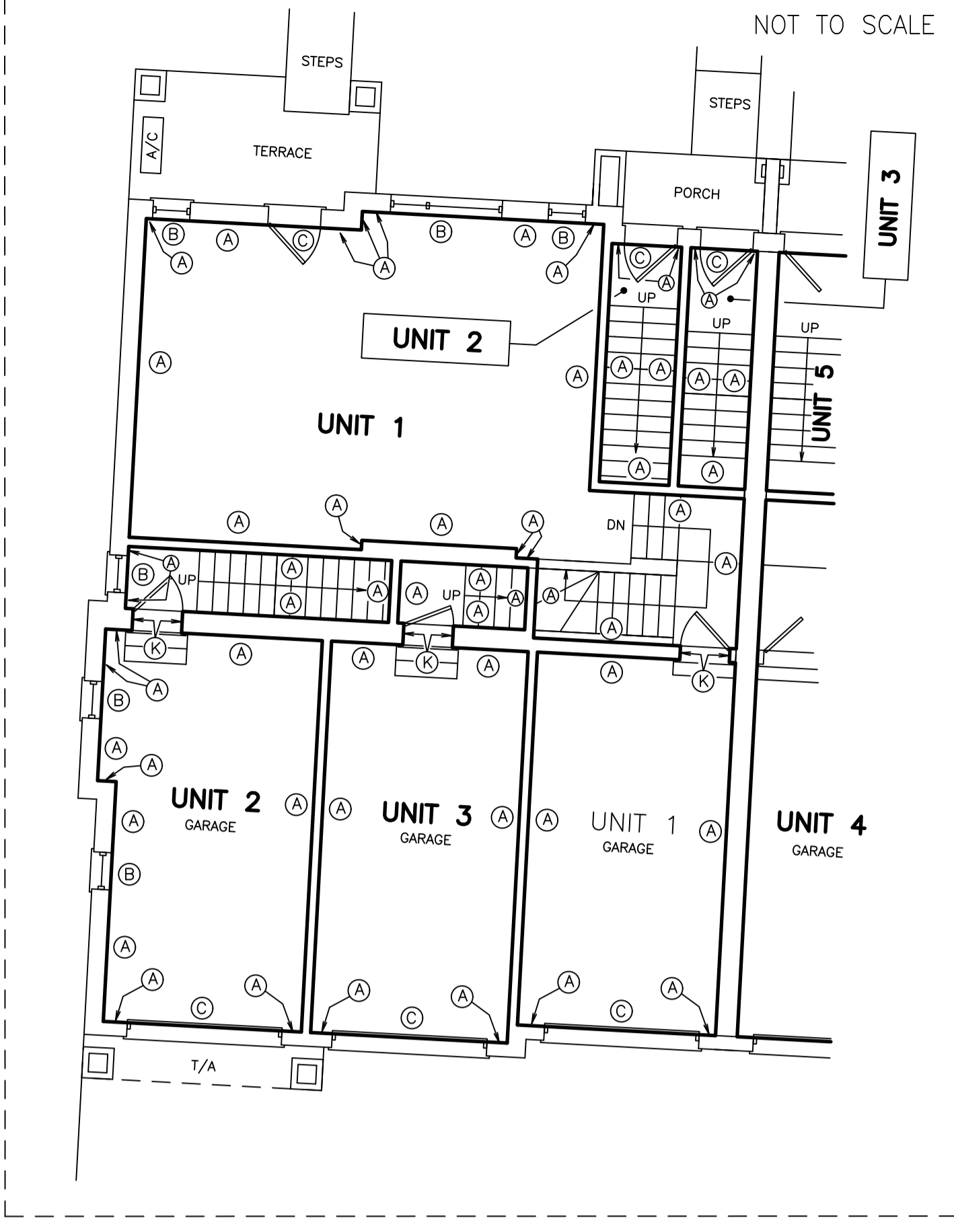
LEGEND FOR UNIT BOUNDARIES

UNIT DEFINITION:

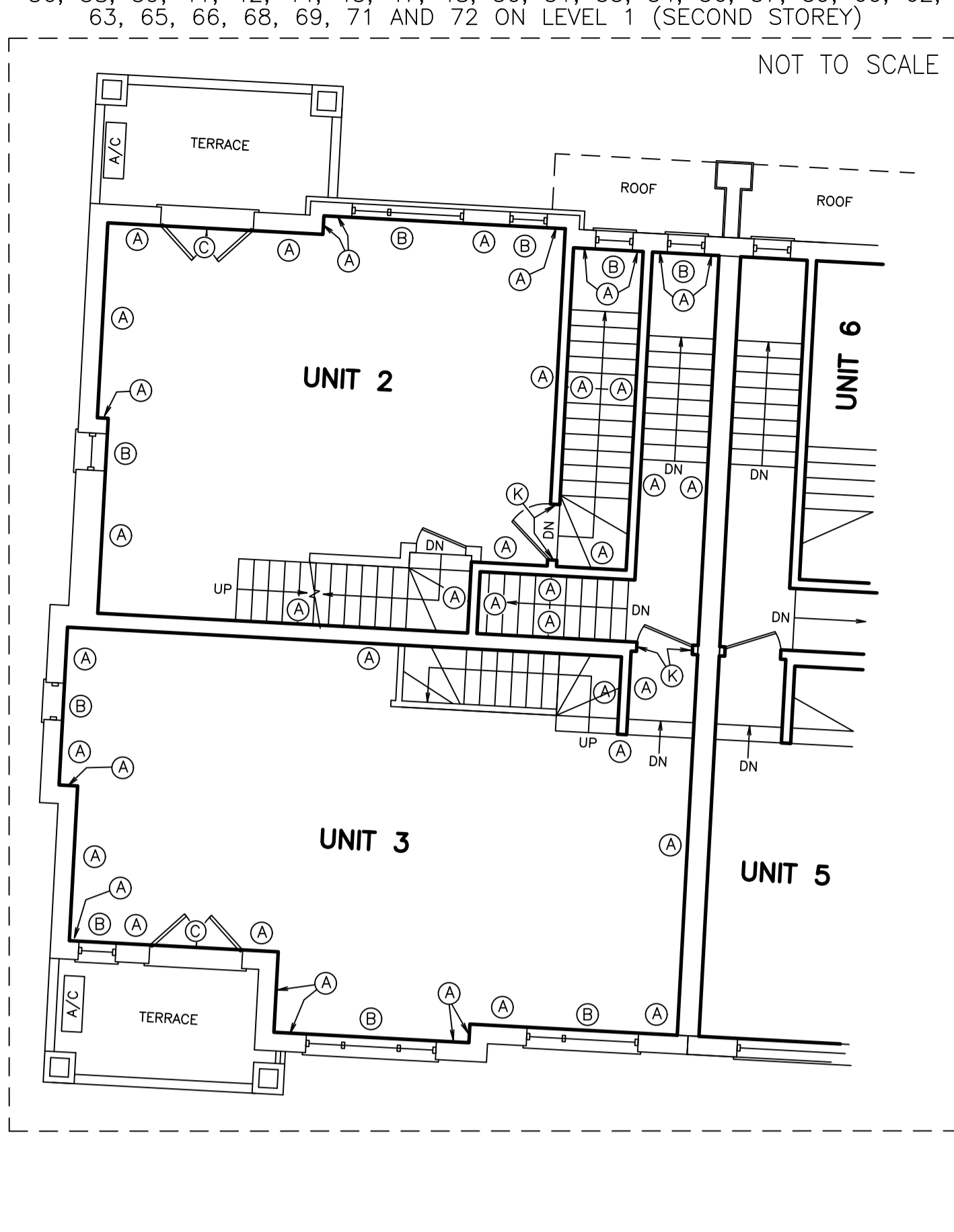
MONUMENTS CONTROLLING THE EXTENT AND LOCATION OF THE UNITS ARE
THE WALLS, FLOORS AND CEILING AS MORE PARTICULARLY DESCRIBED
IN SCHEDULE "A" OF THE DECLARATION.

- AREAS NOT DESIGNATED AS UNITS ARE COMMON ELEMENTS.
- SET SDR MONUMENT WAS USED DUE TO LACK OF OVERBURNING
AND/OR PROXIMITY OF UNDERGROUND UTILITIES IN ACCORDANCE WITH
SECTION 41 (4) OF O.Reg. 552/01.
- ⊖ DENOTES THE BACKSIDE SURFACE OF THE DRYWALL SHEATHING AND PRODUCTION
- ⊕ DENOTES THE UNIT SIDE SURFACE OF WINDOW AND WINDOW FRAME IN THE CLOSED POSITION
- ⊗ DENOTES THE UNIT SIDE SURFACE OF DOOR AND DOOR FRAME IN THE CLOSED POSITION
- ⊙ DENOTES THE UPPER SURFACE OF THE DRYWALL SHEATHING AND/OR SUSPENDED DRYWALL CEILING
- ⊚ DENOTES THE UPPER SURFACE OF THE UNFINISHED WOOD FLOOR BOARDS SEPARATING THE UNIT FROM ANOTHER
SUCH UNIT BELOW OR THE COMMON ELEMENT
- ⊛ DENOTES THE UPPER SURFACE OF THE UNFINISHED WOOD STAIRS SEPARATING THE UNIT FROM ANOTHER
SUCH UNIT OR THE COMMON ELEMENT
- ⊜ DENOTES THE UPPER SURFACE OF THE CONCRETE FLOOR SLAB
- ⊝ DENOTES THE LOWER SURFACE OF DOOR FRAME
- ⊞ DENOTES THE UPPER SURFACE OF DOOR THRESHOLD
- ⊟ DENOTES THE UNIT SIDE SURFACE OF THE UNFINISHED CONCRETE FOUNDATION WALL
- ⊠ DENOTES THE UNIT SIDE SURFACE OF DOOR FRAME

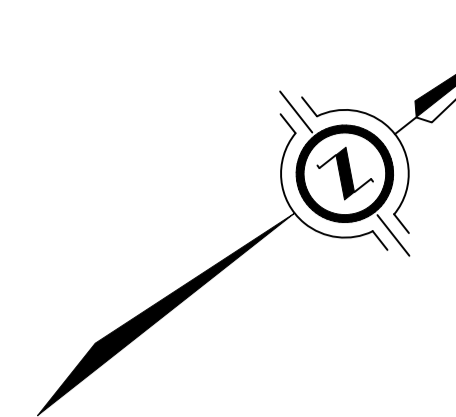
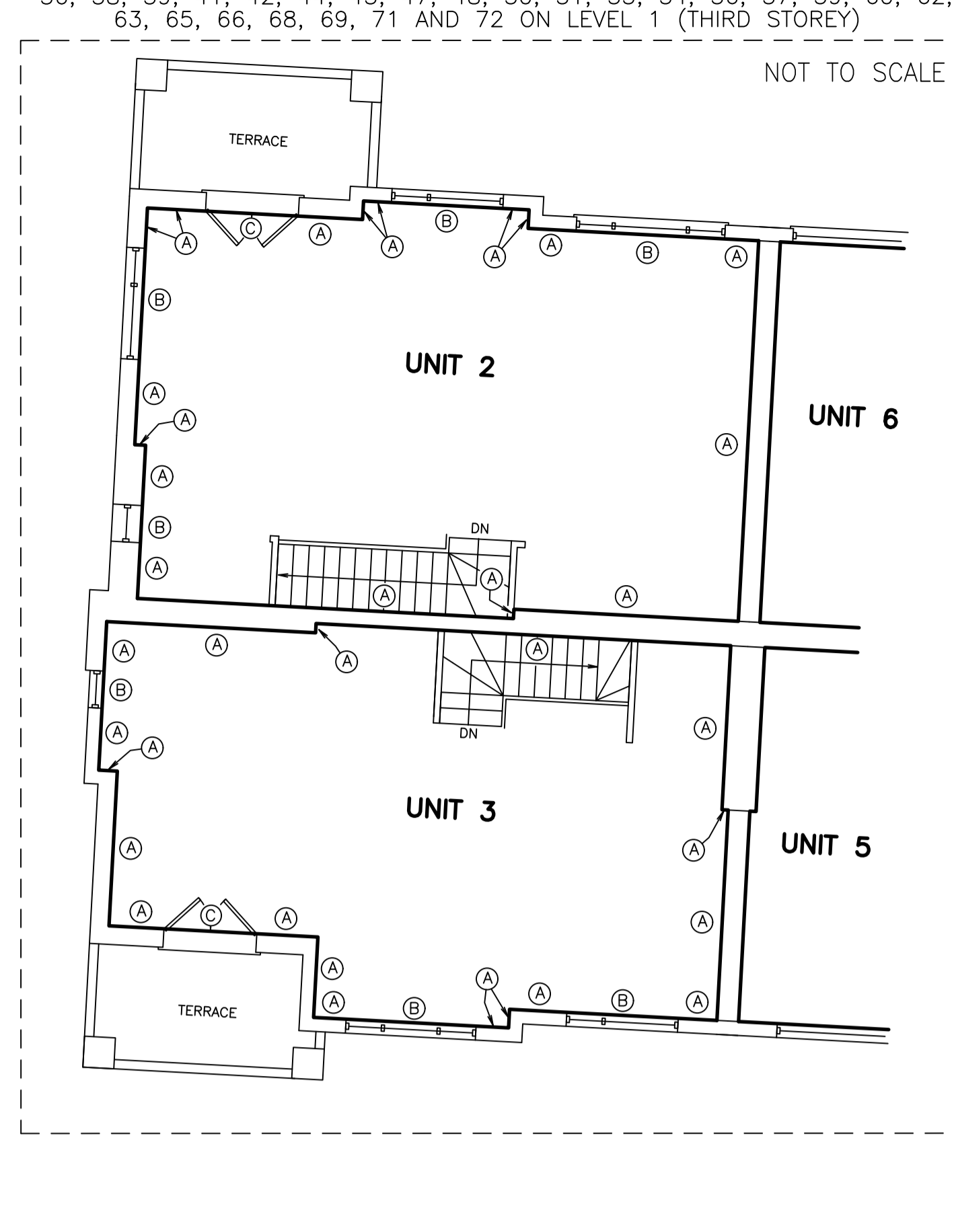
DETAIL "A"
PLAN VIEW ILLUSTRATING TYPICAL UNIT BOUNDARIES FOR UNITS
1 TO 72, BOTH INCLUSIVE ON LEVEL 1 (FIRST STOREY)



DETAIL "B"
PLAN VIEW ILLUSTRATING TYPICAL UNIT BOUNDARIES FOR UNITS 2, 3, 5, 6, 8,
9, 11, 12, 14, 15, 17, 18, 20, 21, 23, 24, 26, 27, 29, 30, 32, 33, 35,
36, 38, 39, 41, 42, 44, 45, 47, 48, 50, 51, 53, 54, 56, 57, 59, 60, 62,
63, 65, 66, 68, 69, 71 AND 72 ON LEVEL 1 (SECOND STOREY)



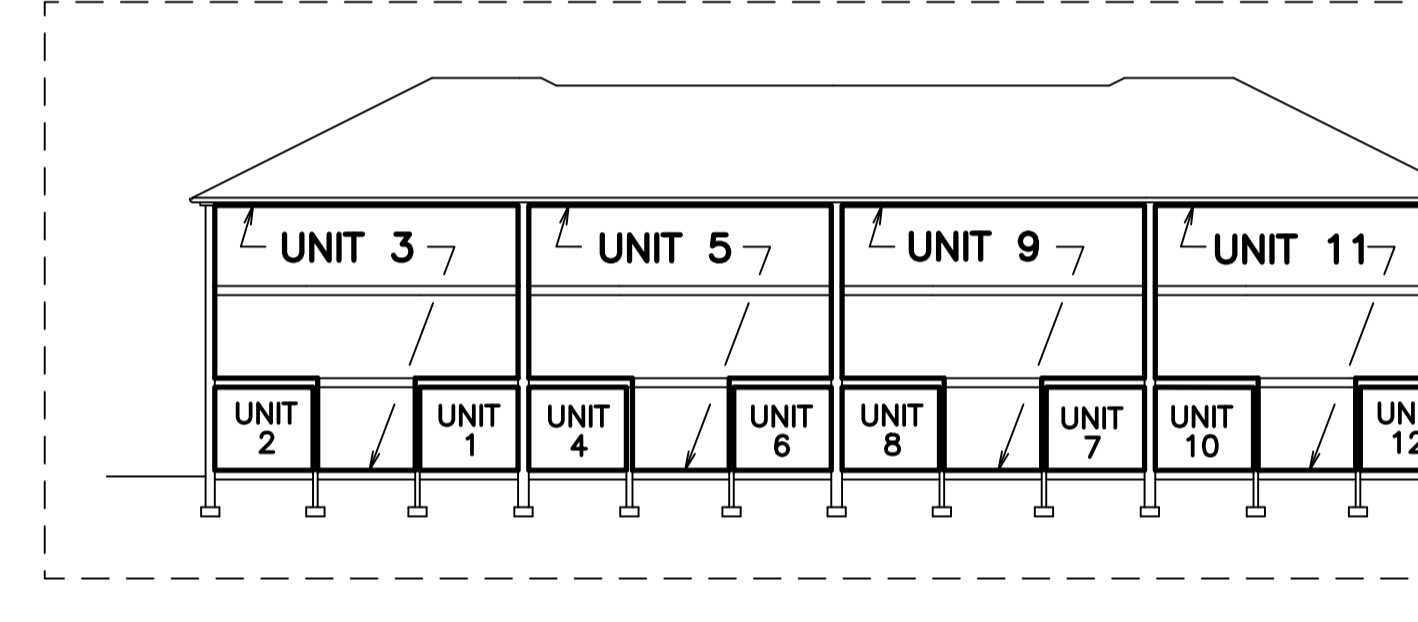
DETAIL "C"
PLAN VIEW ILLUSTRATING TYPICAL UNIT BOUNDARIES FOR UNITS 2, 3, 5, 6, 8,
9, 11, 12, 14, 15, 17, 18, 20, 21, 23, 24, 26, 27, 29, 30, 32, 33, 35,
36, 38, 39, 41, 42, 44, 45, 47, 48, 50, 51, 53, 54, 56, 57, 59, 60, 62,
63, 65, 66, 68, 69, 71 AND 72 ON LEVEL 1 (THIRD STOREY)



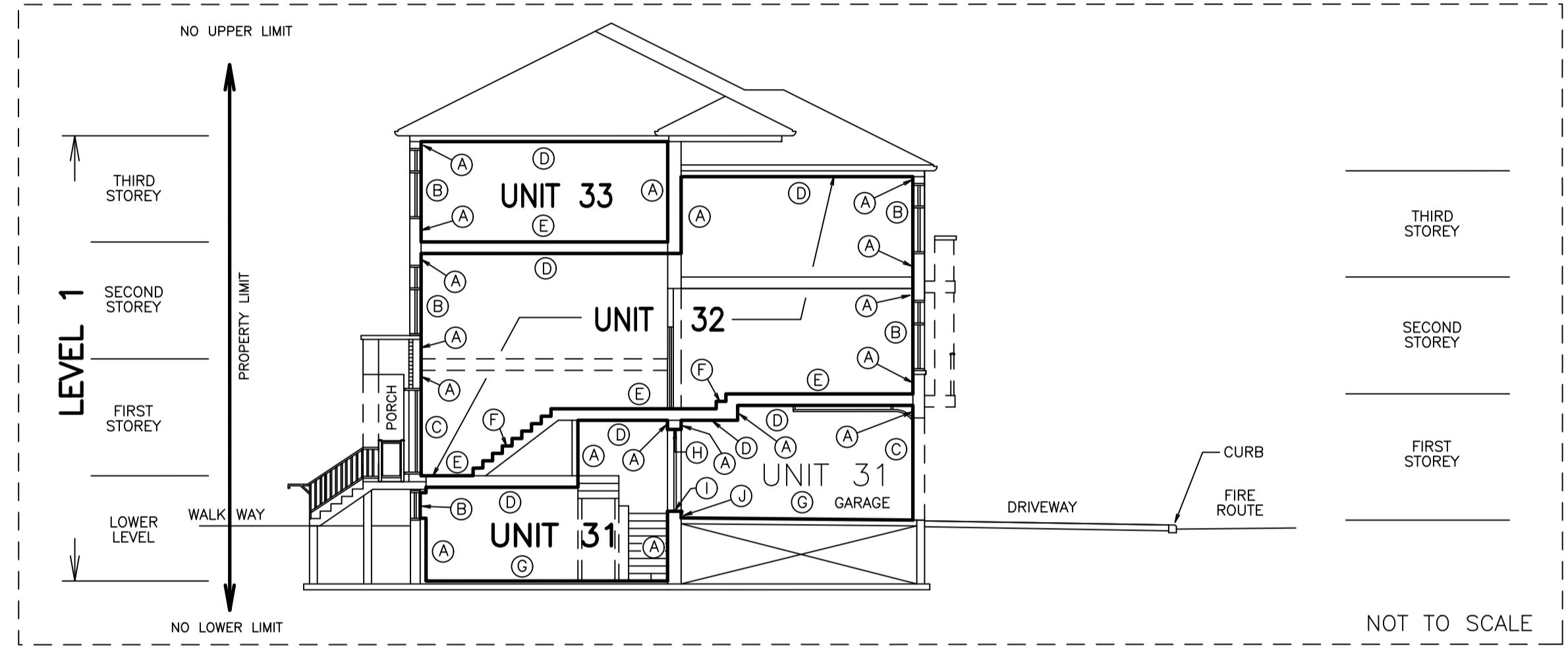
PLAN VIEW SHOWING RESIDENTIAL UNITS 1 TO 72, BOTH INCLUSIVE
ON LEVEL 1 (FIRST STOREY)



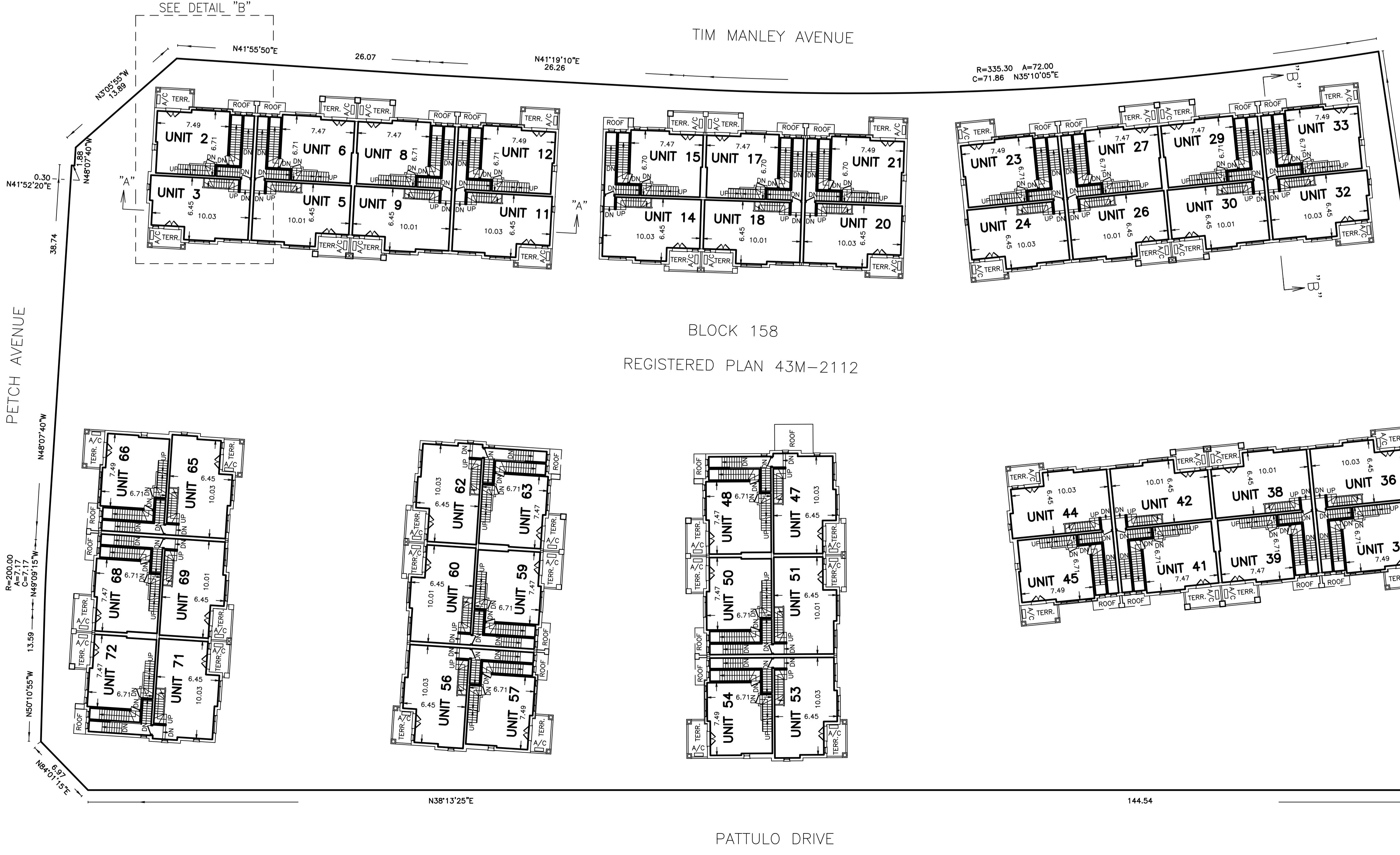
CROSS SECTION "A" - "A"
ILLUSTRATING TYPICAL VERTICAL UNIT CONFIGURATION
FOR UNITS 1 TO 72, BOTH INCLUSIVE ON LEVEL 1



CROSS SECTION "B" - "B"
ILLUSTRATING TYPICAL VERTICAL UNIT BOUNDARIES FOR
FOR UNITS 1 TO 72, BOTH INCLUSIVE ON LEVEL 1



PLAN VIEW SHOWING RESIDENTIAL UNITS 2, 3, 5, 6, 8, 9, 11, 12, 14, 15, 17, 18,
20, 21, 23, 24, 26, 27, 29, 30, 32, 33, 35, 36, 38, 39, 41, 42, 44, 45, 47, 48,
50, 51, 53, 54, 56, 57, 59, 60, 62, 63, 65, 66, 68, 69, 71 AND 72 ON LEVEL 1 (SECOND STOREY)



PLAN VIEW SHOWING RESIDENTIAL UNITS 2, 3, 5, 6, 8, 9, 11, 12, 14, 15, 17, 18,
20, 21, 23, 24, 26, 27, 29, 30, 32, 33, 35, 36, 38, 39, 41, 42, 44, 45, 47, 48,
50, 51, 53, 54, 56, 57, 59, 60, 62, 63, 65, 66, 68, 69, 71 AND 72 ON LEVEL 1 (THIRD STOREY)

