

TOWN OF CALEDON  
PLANNING RECEIVED  
February 13, 2026

**TOWN OF CALEDON ZONING BY-LAW MATRIX:**

ZONE STANDARD	ENVIRONMENTAL POLICY AREA 1 (EPA 1-573) REQUIREMENTS	INSTITUTIONAL (I-571) REQUIREMENTS	PROPOSED
LOT AREA (MIN)	n/a	n/a	5,405m <sup>2</sup>
LOT FRONTAGE (MIN)	n/a	n/a	85m
LANDSCAPING AREA (MIN)	n/a	14%	41%
PLANTING STRIP WIDTH (ADJACENT TO STATION ROAD)	n/a	1m	1m
BARRIER FREE PARKING SPACES	n/a	n/a	2
FRONT YARD (MIN)	9m	2m	n/a
REAR YARD (MIN)	9m	0.5m	n/a
PARKING SPACE SETBACKS FROM ANY STREET LINE (MIN)	n/a	n/a	n/a

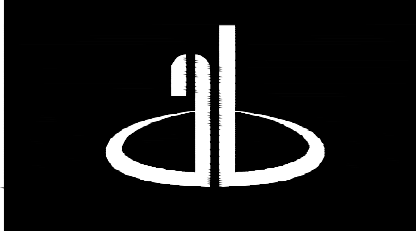
**LEGEND**

- DECIDUOUS TREE
- DECIDUOUS MULTI-STEM TREE
- STREETSCAPE TREE
- CONIFEROUS TREES
- SHRUBS
- ORNAMENTAL GRASS
- BENCH
- SODDED AREA
- SEEDED AREA
- BEACHSTONES
- HANDRAIL
- LIGHTING
- DECORATIVE METAL FENCE

BASE INFORMATION OBTAINED ELECTRONICALLY FROM SCHAEFFER DZALDOVY BENNETT (JOB NO. 19-221-01A, TEL. 416.987.0101)


no.	date	version	by
2.	FEB 3 2026	ISSUED FOR RESUBMISSION	RD
1.	FEB 16 2024	ISSUED FOR OPA/ZBA SUBMISSION	RD/SO

All information hereon to be checked and verified at the site and any discrepancies must be reported to and clarified by the landscape architect before commencing work. All drawings, specifications, details, digital information, etc., prepared by the landscape architect are instruments of service and as such are his property and must be returned at his request.



**ALEXANDER BUDREVICS ASSOCIATES LIMITED**  
LANDSCAPE ARCHITECTS

856 Don Mills Road, Second Tower, Suite 212  
Toronto, Ontario, Canada, M3C 1W3  
416.444.5201  
www.budrevics.com

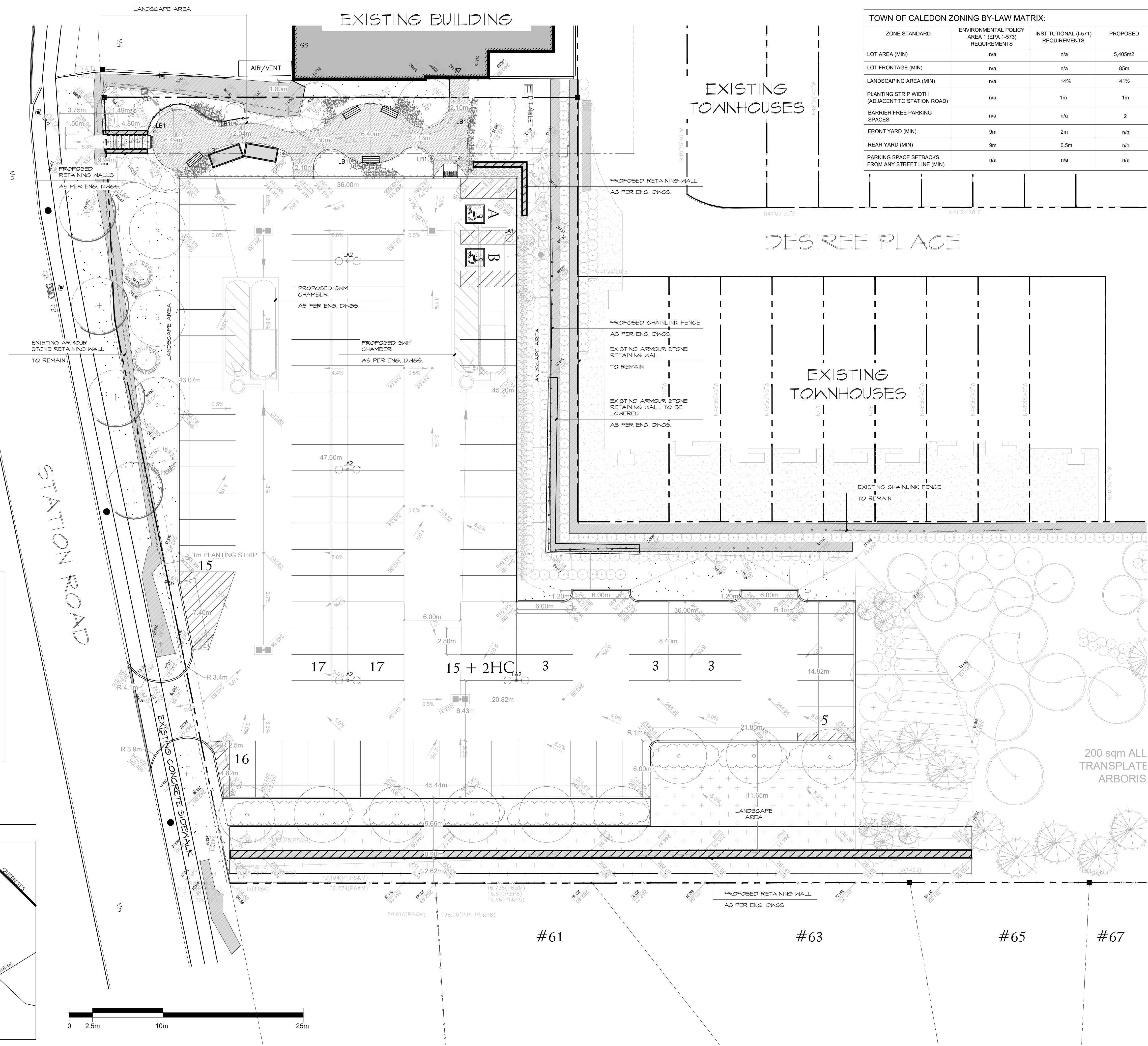


project  
**PROPOSED PARKING LOT DEVELOPMENT**  
PART OF BLOCK 3, REGISTERED PLAN 43M-2065  
14 STATION ROAD  
CALEDON, ONTARIO  
KING STATION DEVELOPMENTS

**SITE PLAN**

date	NOVEMBER 14, 2023	drawn	RD
scale*	1:200	file	3685 SP1 V2-260203
direction		project no.	3685
		sheet no.	SP-1

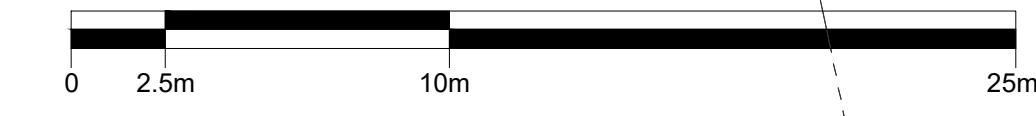
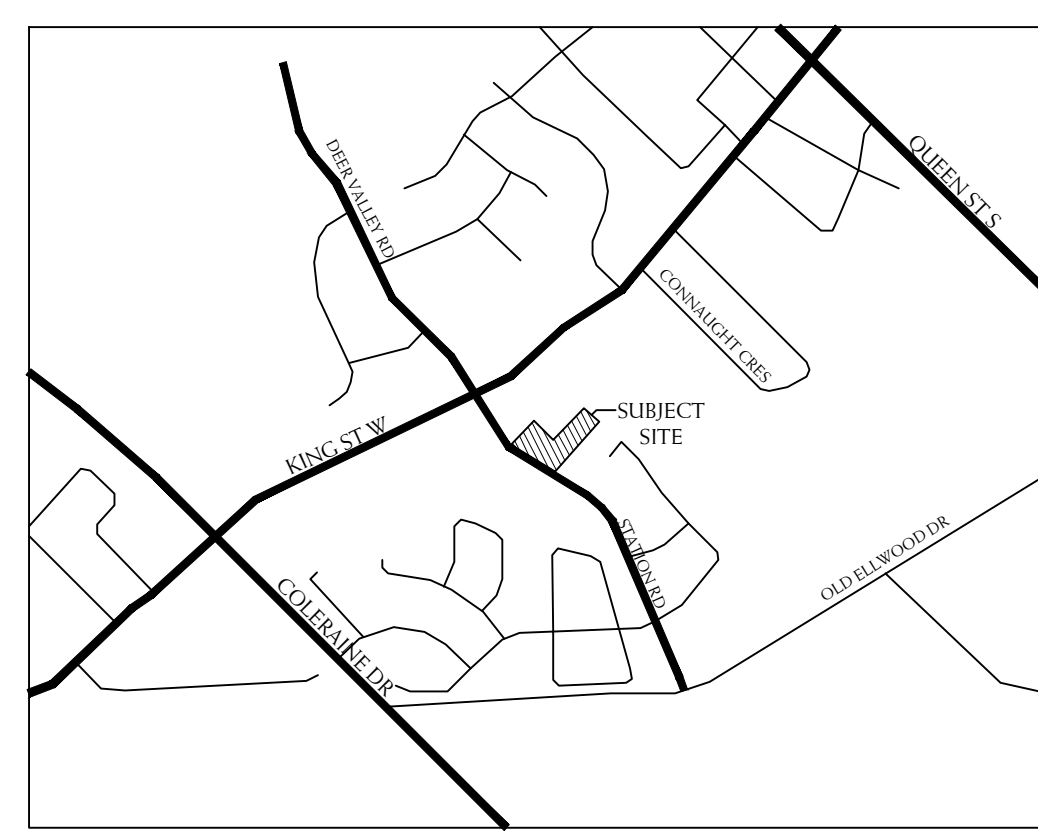
\*NOTED SCALE IS APPLICABLE ONLY WHEN PRINTED ON ARCH D (24"x36") SIZE SHEET



**\*LIGHTING NOTE:**

- "LIGHTING FIXTURES SHALL BE INSTALLED IN SUCH A MANNER THAT ALL LIGHT EMITTED FROM THE FIXTURE, EITHER DIRECTLY FROM THE LAMP OF A DIFFUSING ELEMENT, OR INDIRECTLY BY REFLECTION OR REFRACTION FROM ANY PART OF THE FIXTURES IS PROJECTED BELOW THE LAMP AND ONTO THE LOT THE LIGHTING IS INTENDED TO SERVE."
- "THE MAXIMUM HEIGHT OF ALL LIGHTING FIXTURES IS 9.0m"
- "MINIMUM DISTANCE OF LIGHTING FIXTURES FROM ANY LOT LINE IS 4.5m"

**KEY MAP**



**LEGEND**

- DECIDUOUS TREE
- DECIDUOUS MULTI-STEM TREE
- STREETScape TREE
- CONIFEROUS TREES
- SHRUBS
- ORNAMENTAL GRASS
- BENCH
- SODDED AREA
- SEEDED AREA
- BEACHSTONES
- HANDRAIL
- LIGHTING
- DECORATIVE METAL FENCE

BASE INFORMATION OBTAINED ELECTRONICALLY FROM SCHAEFFER DZALDOV BENNETT (JOB NO. 19-221-01A, TEL. 416.987.0101)

no.	date	version	by
2.	FEB 3 2026	ISSUED FOR RESUBMISSION	RD
1.	FEB 16 2024	ISSUED FOR OPA/ZBA SUBMISSION	RD/SO

All information hereon to be checked and verified at the site and any discrepancies must be reported to and clarified by the landscape architect before commencing work. All drawings, specifications, details, digital information, etc., prepared by the landscape architect are instruments of service and as such are his property and must be returned at his request.

**ALEXANDER BUDREVICS ASSOCIATES LIMITED**  
LANDSCAPE ARCHITECTS  
895 Don Mills Road, Second Tower, Suite 212  
Toronto, Ontario, Canada, M3C 1W3  
416.444.5201  
www.budrevics.com

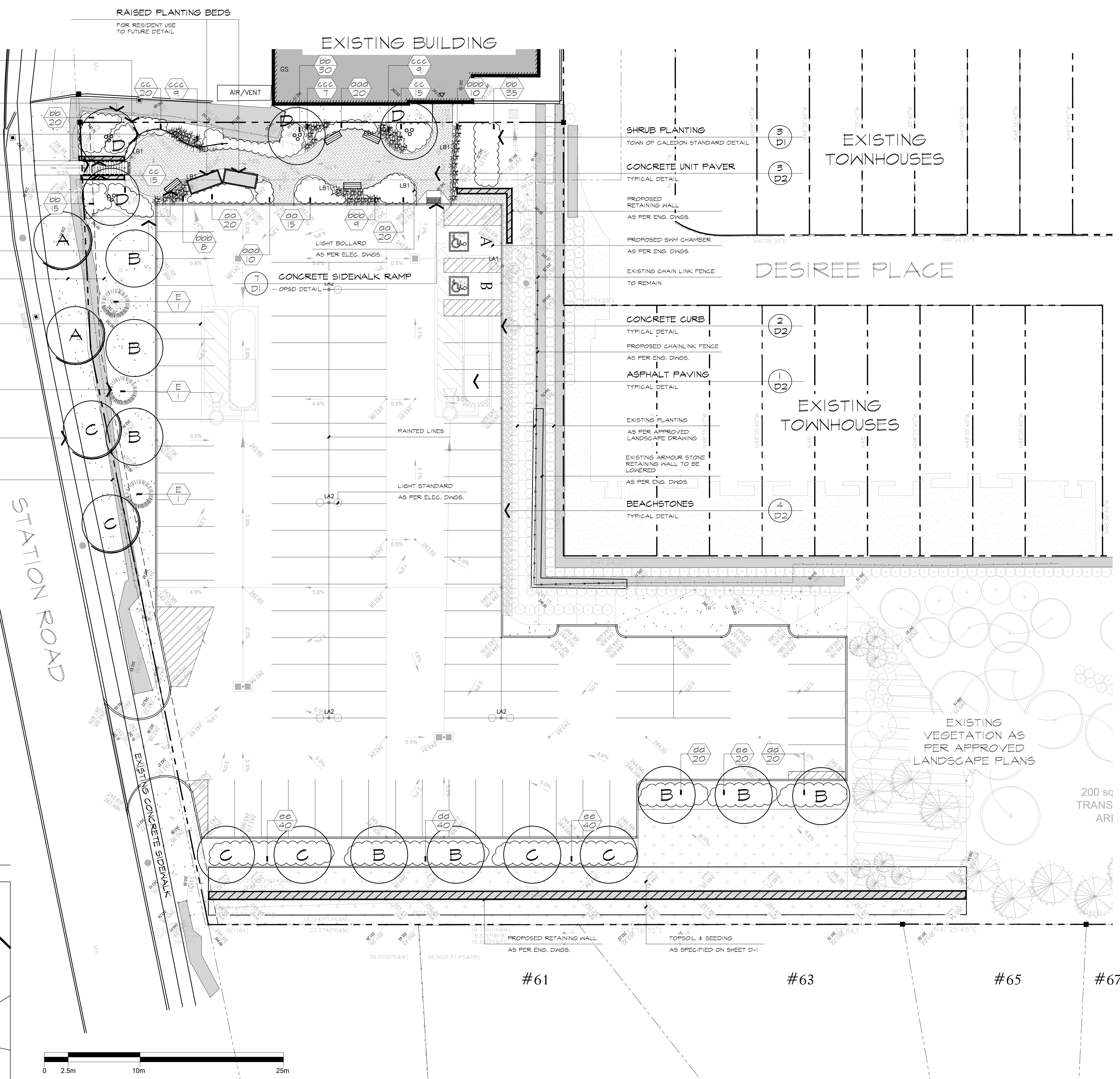


project  
**PROPOSED PARKING LOT DEVELOPMENT**  
PART OF BLOCK 3, REGISTERED PLAN 43M-2065  
14 STATION ROAD  
CALEDON, ONTARIO  
KING STATION DEVELOPMENTS

**LANDSCAPE PLAN**

date	NOVEMBER 14, 2023	drawn	RD
scale*	1:200	file	3685 L1 V2-260203
direction		project no.	3685
		sheet no.	L-1

\*NOTED SCALE IS APPLICABLE ONLY WHEN PRINTED ON ARCH D (24"X36") SIZE SHEET

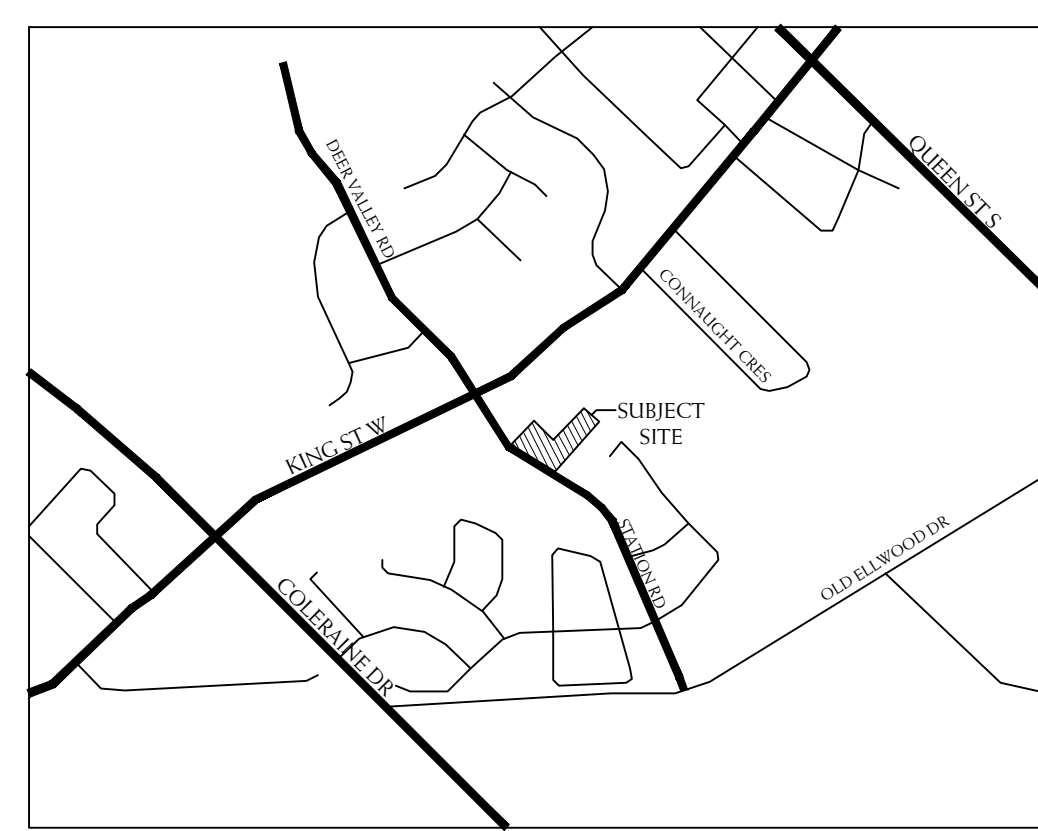


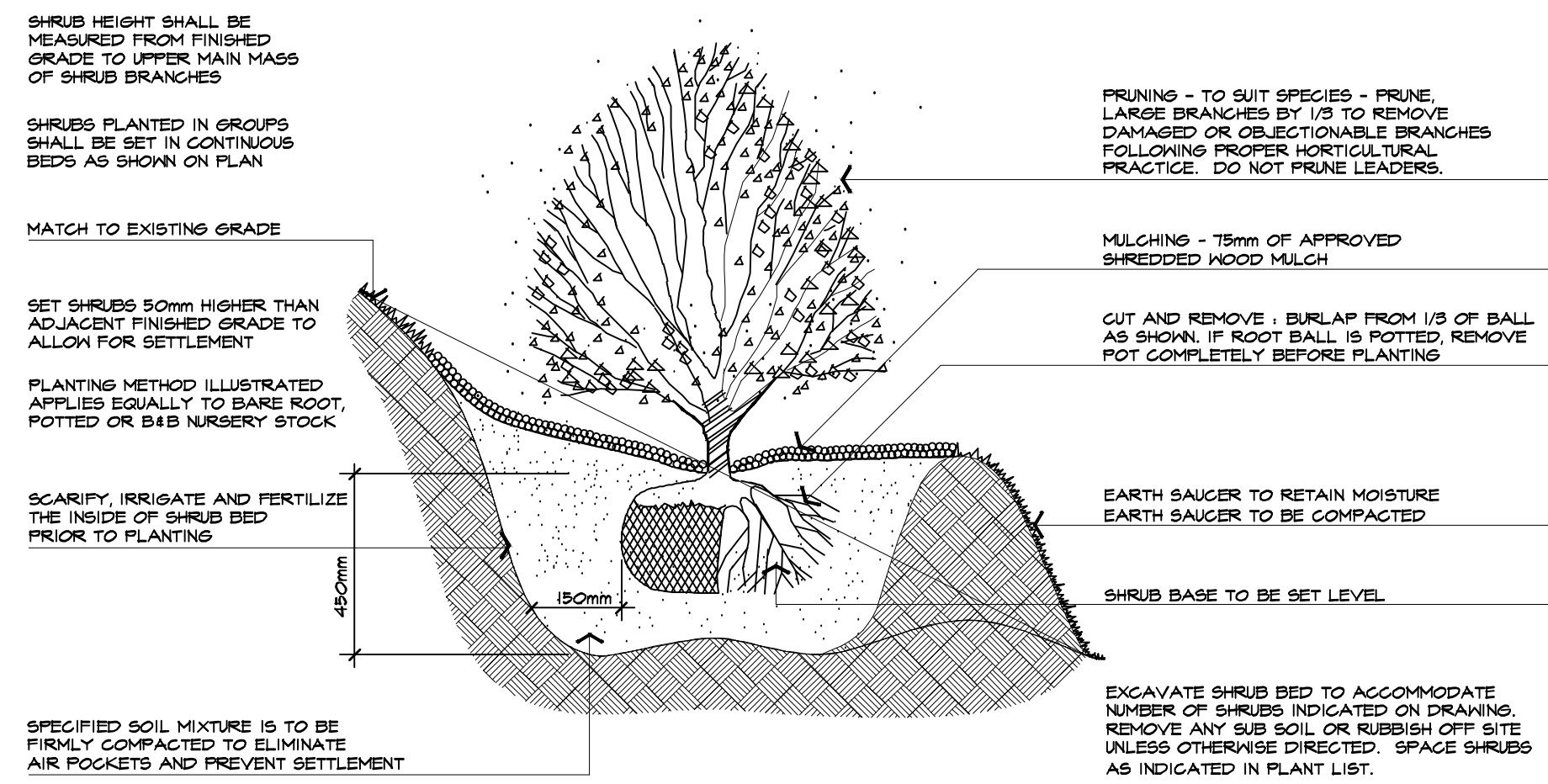
- 6 D1 SHRUB PLANTING ON SLOPE  
TYPICAL DETAIL
- 5 D1 DECIDUOUS TREE PLANTING ON SLOPE  
TYPICAL DETAIL
- 7 D2 DECORATIVE METAL FENCE  
TYPICAL DETAIL
- 5 D2 CONCRETE STEPS  
TYPICAL DETAIL
- 6 D2 HANDRAIL  
TYPICAL DETAIL
- 6 D2 BENCH  
TO FUTURE DETAIL
- 4 D1 TYPICAL PLANTING LAYOUT  
TYPICAL DETAIL
- TOPSOIL & SOD  
AS SPECIFIED ON SHEET D-2
- PROPOSED SKY CHAMBER  
AS PER ENG. DWGS.
- 2 D1 CONIFEROUS TREE PLANTING  
TOWN OF CALEDON STANDARD DETAIL
- 1 D1 DECIDUOUS TREE PLANTING  
TOWN OF CALEDON STANDARD DETAIL
- EXISTING ARMOUR STONE RETAINING WALL  
TO REMAIN

**REFERENCE PLANT LIST**

- KEY COMMON NAME
- DECIDUOUS TREES**
- A LIRIODENDRON TULIPIFERA
  - B GLEDITSIA TRIACANTHOS SHADEMASTER
  - C CELTIS OCCIDENTALIS
  - D ACER RUBRUM
- CONIFEROUS TREES**
- E PINUS STROBUS
- CONIFEROUS SHRUBS**
- aa TAXUS CANADENSIS
- DECIDUOUS SHRUBS**
- bb CORNUS SERICEA
  - cc RHUS AROMATICA 'GRO-LOW'
  - dd DIERVILLA LONGERA
  - ee SPIRAEA ALBA
- PERENNIALS, GROUND COVERS AND GRASSES**
- ooo ECHINACEA ANGSTIFOLIA
  - bbb PANICUM VIRSATUM
  - ccc CAREX VULPINOIDEA
- \*REFER TO SHEET D1 FOR MASTER PLANT LIST

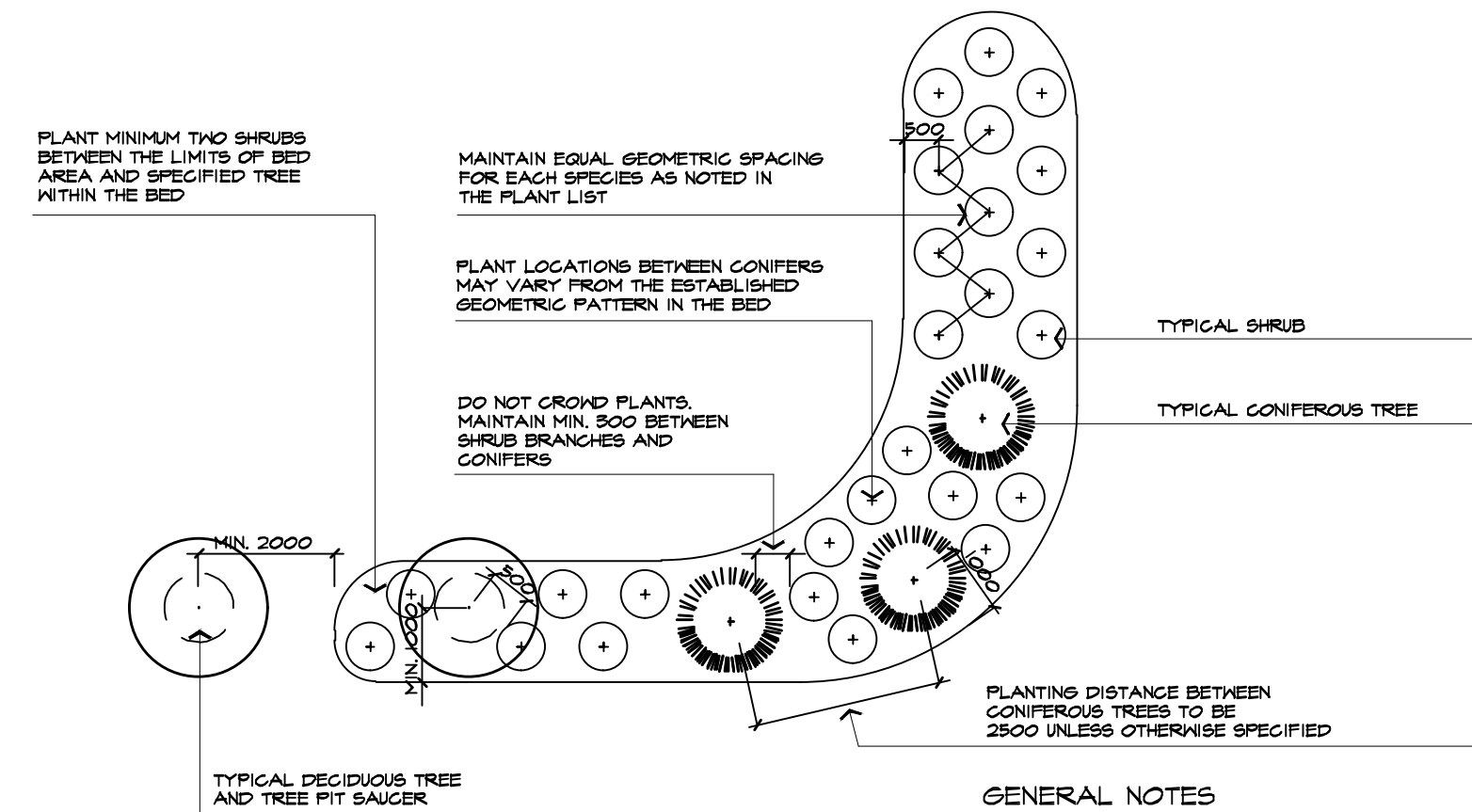
**KEY MAP**





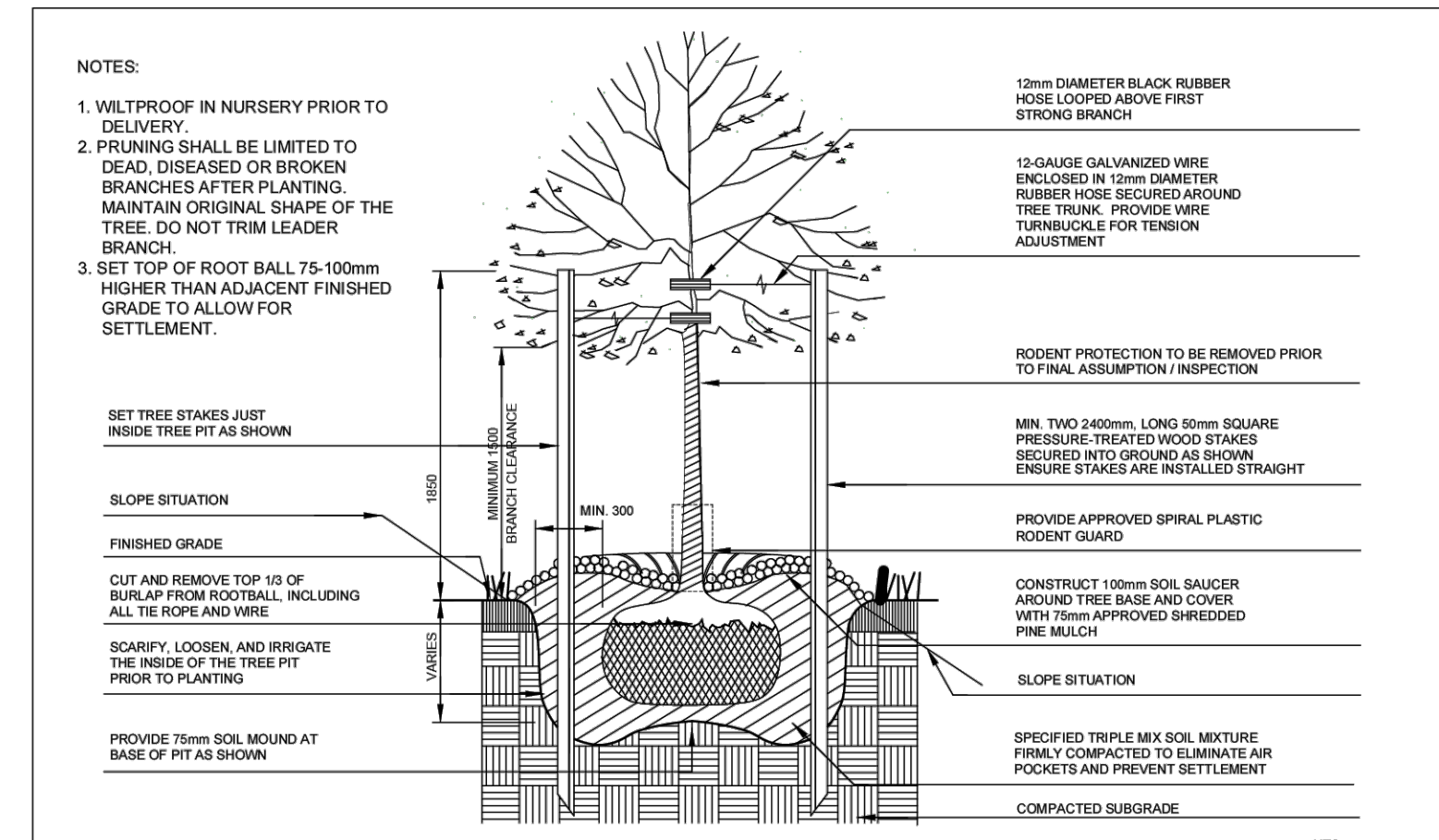
6 SHRUB PLANTING DETAIL ON SLOPES

NTS  
ABAL P502-040905



4 TYPICAL PLANTING LAYOUT - LAWN AREA

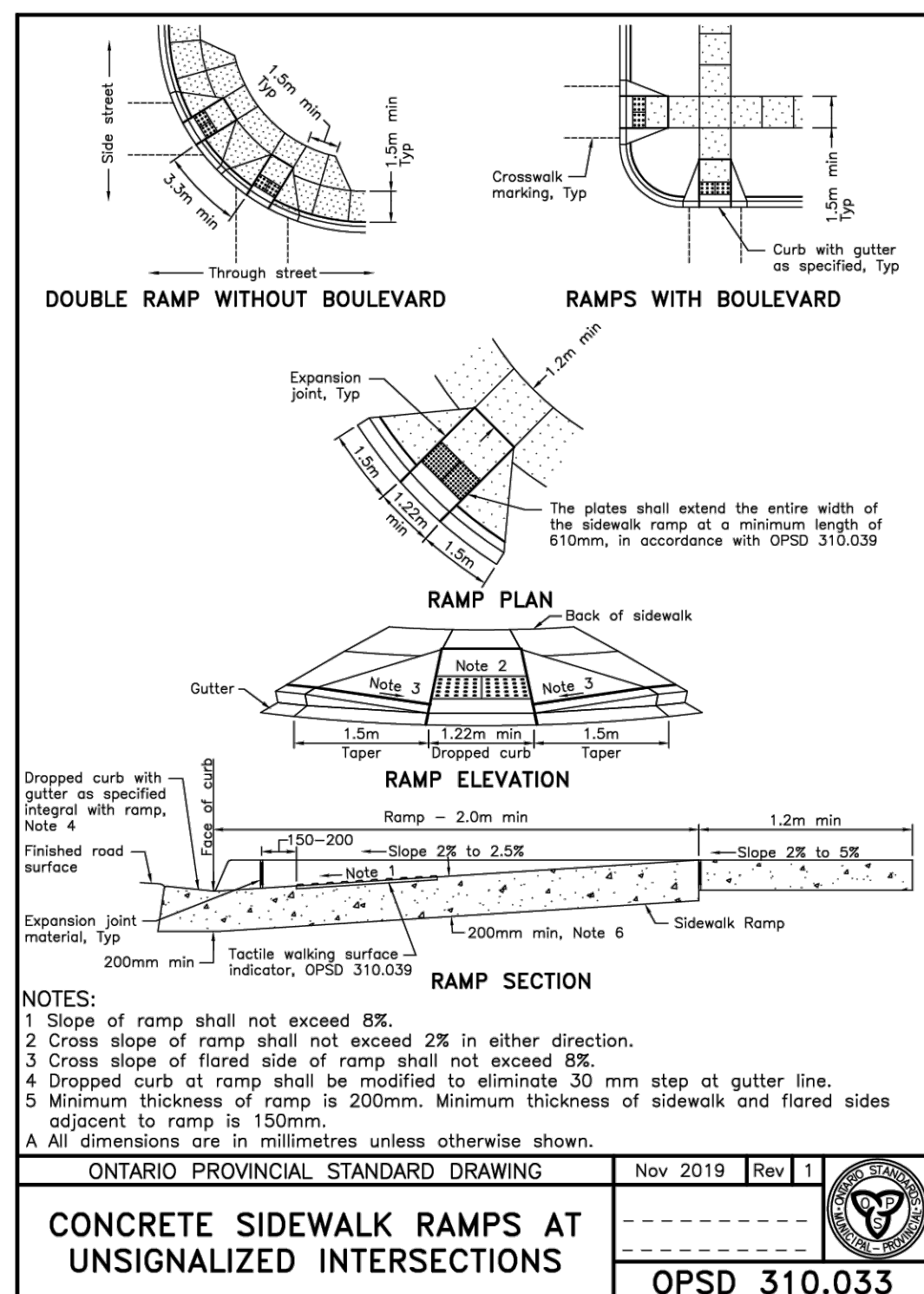
NTS  
ABAL P402-050505



1 DECIDUOUS TREE PLANTING

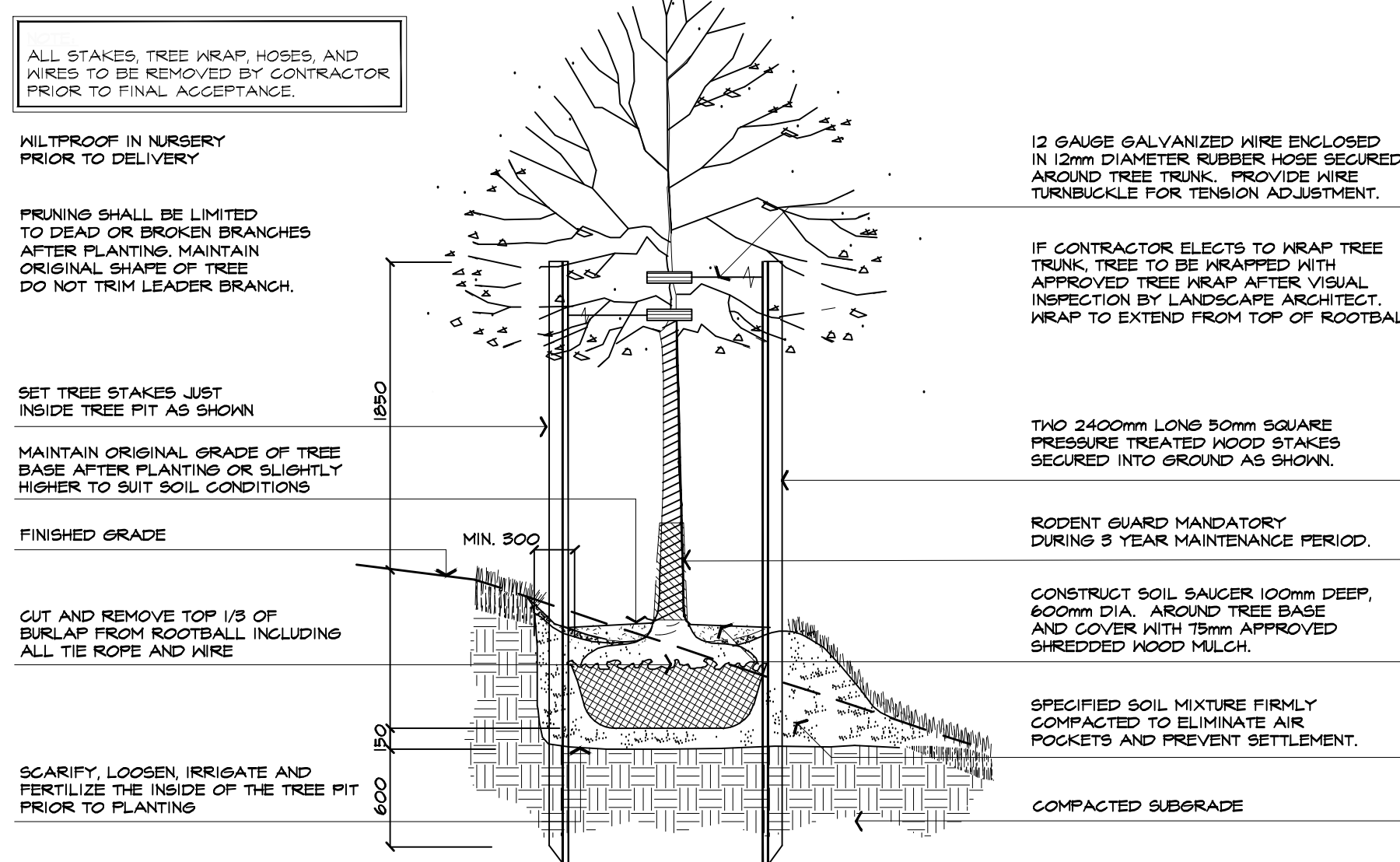
NTS  
TOWN OF CALEDON STANDARD DETAIL

TOWN OF CALEDON		APRD	DATE	DATE	DATE
2	STANDARD No. 700 NOW 800	JAN 18	DRW: abal	JUNE 08	SCALE: NTS
1	STANDARD No. 1100 NOW 700	JUNE 08	DATE	DATE	STANDARD No. 800
NO.	REVISION	APRD	DATE	DATE	STANDARD No. 800



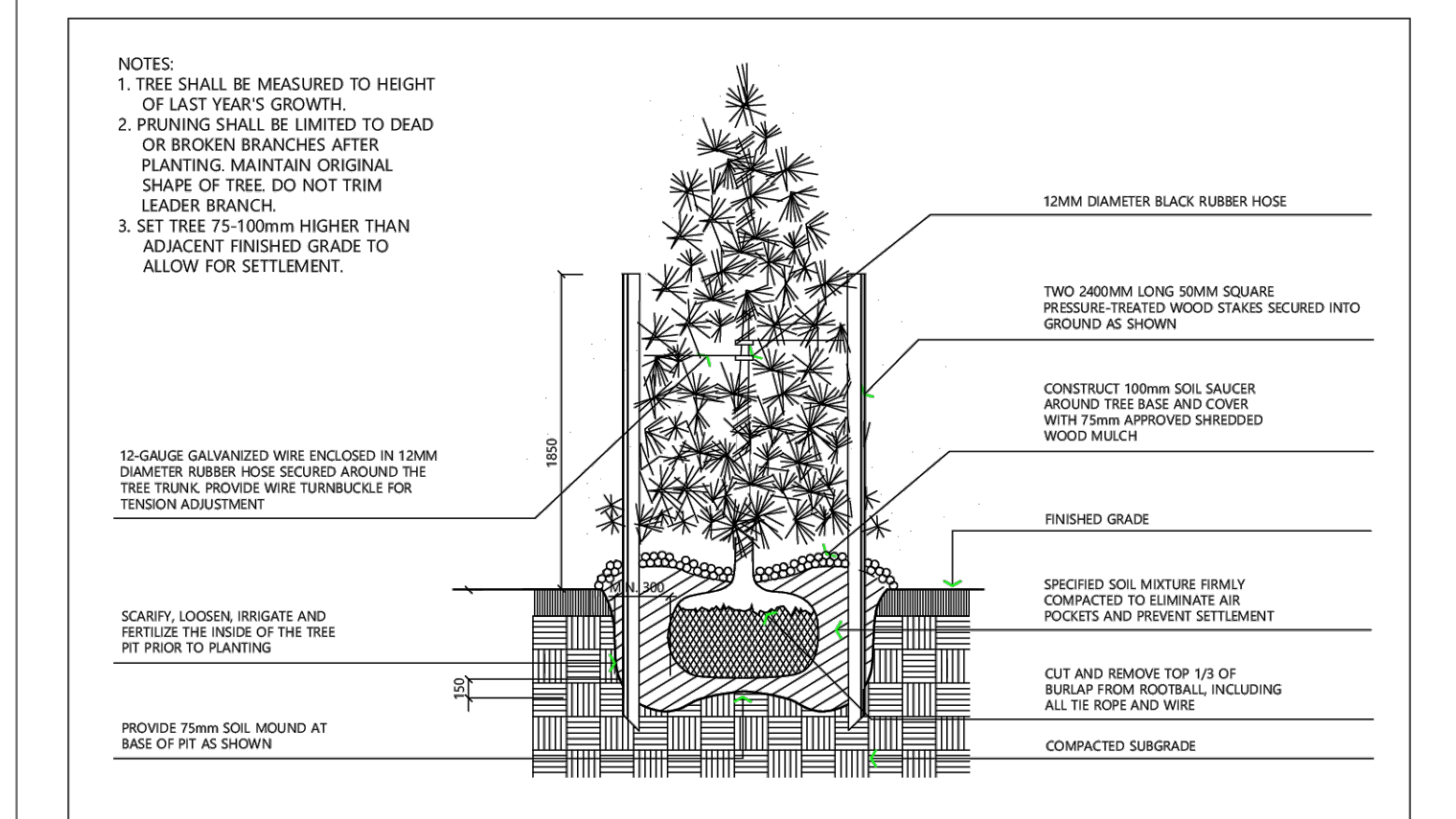
7 CONCRETE SIDEWALK RAMP DETAIL

NTS  
TO BE INSTALLED AS PER DETAIL



5 DECIDUOUS TREE PLANTING ON SLOPE DETAIL

NTS  
ABAL P303-051027



2 CONIFEROUS TREE PLANTING

NTS  
TOWN OF CALEDON STANDARD DETAIL

TOWN OF CALEDON		APRD	DATE	DATE	DATE
2	STANDARD No. 701 NOW 801	APR 19	DRW: ABAL	JUNE 08	SCALE: NTS
1	STANDARD No. 1105 NOW 701	JUNE 08	DATE	DATE	STANDARD No. 801
NO.	REVISION	APRD	DATE	DATE	STANDARD No. 801

## MASTER PLANT LIST

PROJECT NAME:  
PROPOSED PARKING LOT DEVELOPMENT -  
(ABAL 5685)

In the event of a discrepancy between the planting plan  
and the plant list quantities, the planting plan shall govern.

KEY QUANTITY	BOTANICAL NAME	COMMON NAME	GALIPER	HEIGHT	SPREAD	ROOT	REMARKS	SPACING	WATER EFFICIENT	NATIVE					
<b>DECIDUOUS TREES</b>															
A	2	LIRIODENDRON TULIPIFERA					TULIP TREE	60mm	3500mm	1500mm	K.B.	EQUAL FORM	----	Y	Y
B	8	GLEDITSIA TRIACANTHOS 'SHADEMASTER'					SHADEMASTER HONEY-LOCUST	60mm	3500mm	1500mm	K.B.	EQUAL FORM	----	Y	Y
C	6	CELTIS OCCIDENTALIS					COMMON HACKBERRY	60mm	3500mm	1200mm	K.B.	EQUAL FORM	----	Y	Y
D	4	ACER RUBRUM					RED MAPLE	3x60mm	3500mm	1500mm	K.B.	MULTI-STEM	----	Y	Y
<b>CONIFEROUS TREES</b>															
E	3	PINUS STROBUS					EASTERN WHITE PINE	----	1500mm	1000mm	K.B.	SPECIMEN	----	Y	Y
<b>CONIFEROUS SHRUBS</b>															
oo	35	TAXUS CANADENSIS					CANADIAN YEW	----	----	600mm	POTTED	MIN. 15 CANDLES	800mm	Y	Y
<b>DECIDUOUS SHRUBS</b>															
bb	100	CORNUS SERICEA					RED OSIER DOGWOOD	----	800mm	----	POTTED	MIN. 10 STEMS	800mm	Y	Y
cc	50	RHUS AROMATICA 'GRO-LOW'					GRO-LOW FRAGRANT SUMAC	----	600mm	----	POTTED	MIN. 10 STEMS	800mm	Y	Y
dd	80	DIERVILLA LONICERA					BUSH HONEY-SUCKLE	----	800mm	----	POTTED	MIN. 10 STEMS	800mm	Y	Y
ee	100	SPIRAEA ALBA					MEADOWSWEET	----	1250mm	----	POTTED	MIN. 10 STEMS	800mm	Y	Y
<b>PERENNIALS, GROUND COVERS AND GRASSES</b>															
aaa	30	ECHINACEA ANGSTUFOLIA					NARROW-LEAF CONEFLOWER	----	----	----	1 gal. POT	MIN. 2 YRS GRTH	400mm	Y	Y
bbb	27	PANICUM VIRGATUM					SWITCH GRASS	----	----	----	1 gal. POT	MIN. 2 YRS GRTH	500mm	Y	Y
ccc	25	CAREX VULPINOIDEA					FOX SEDGE	----	----	----	1 gal. POT	MIN. 2 YRS GRTH	500mm	Y	Y

### \* TERRASEED MIX:

SEED MIXTURE AS SUPPLIED BY ONTARIO SEED COMPANY  
(1-800-465-5849) OR APPROVED EQUAL. APPLIED AT THE  
RATE SHOWN BELOW FOR THE MIX TYPE AND IN  
ACCORDANCE WITH THE SUPPLIER'S INSTRUCTIONS.

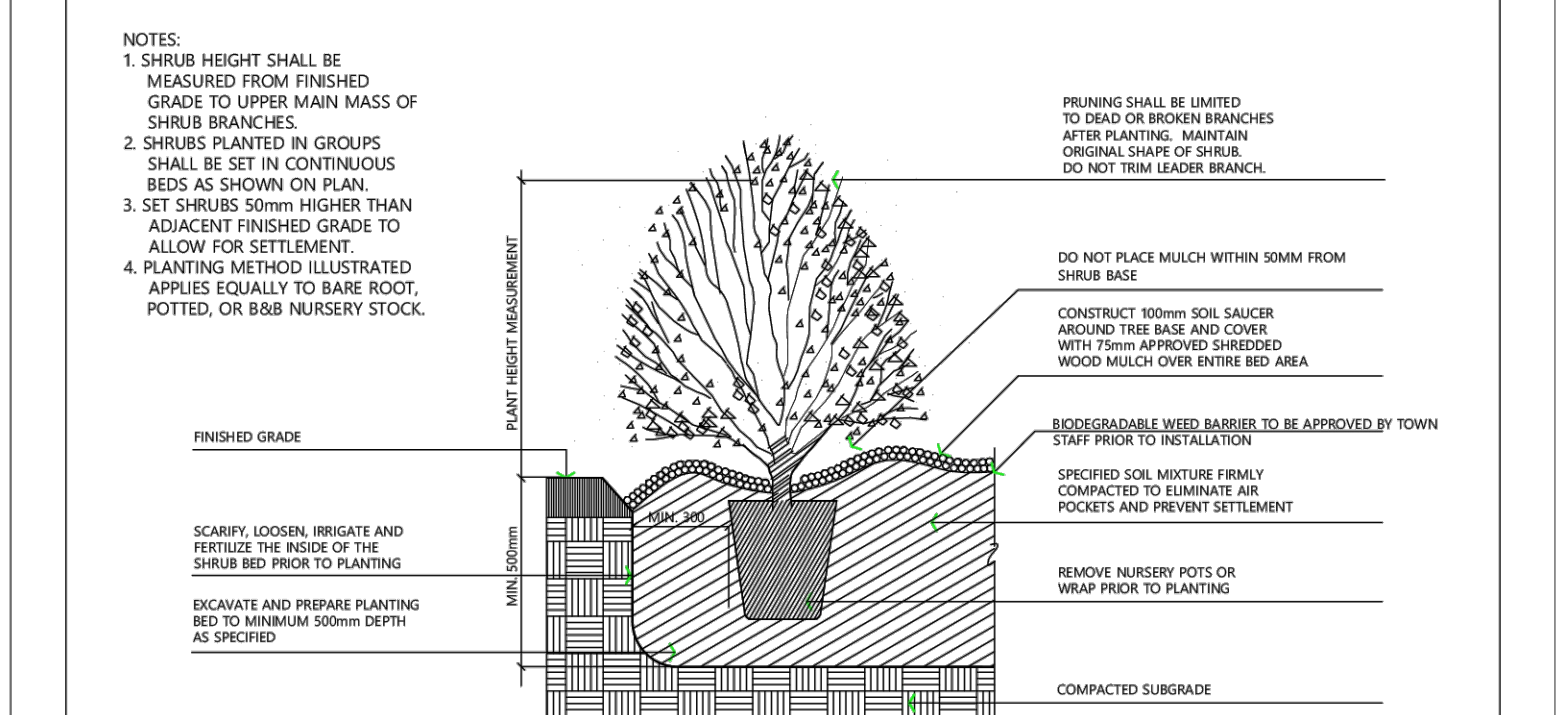
### OSC - MTC MIX WITH NURSE CROP

CREeping RED FESCUE (*Festuca rubra*) 55%  
KENTUCKY BLUEGRASS (*Poa pratensis*) 27%  
PERENNIAL RYEGRASS (*Lolium perenne*) 15%  
WHITE CLOVER (*Trifolium repens*) 3%

SEED RATE: 180kg/ha

### NURSE CROP

ANNUAL RYE GRASS  
SEED RATE: 22kg/h



3 SHRUB PLANTING

NTS  
TOWN OF CALEDON STANDARD DETAIL

TOWN OF CALEDON		APRD	DATE	DATE	DATE
3	STANDARD No. 702 NOW 802	APR 19	APRD: C.C.	JUNE 08	SCALE: NTS
2	STANDARD No. 1110 NOW 702	JUNE 08	DRW: abal	JUNE 08	SCALE: NTS
1	WEED BARRIER ADDED	MARCH 08	DATE	DATE	STANDARD No. 802
NO.	REVISION	APRD	DATE	DATE	STANDARD No. 802

no.	date	version	by
2.	FEB 3 2026	ISSUED FOR RESUBMISSION	RD
1.	FEB 16 2024	ISSUED FOR OPA/ZBA SUBMISSION	RD/SO

All information hereon to be checked and verified at the site and any discrepancies must be reported to and clarified by the landscape architect before commencing work. All drawings, specifications, details, digital information, etc., prepared by the landscape architect are instruments of service and as such are his property and must be returned at his request.

project  
**PROPOSED PARKING LOT DEVELOPMENT**  
PART OF BLOCK 3, REGISTERED PLAN 43M-2065  
14 STATION ROAD  
CALEDON, ONTARIO  
KING STATION DEVELOPMENTS

drawing

## LANDSCAPE DETAILS

date	NOVEMBER 14, 2023	drawn	RD
scale*	AS SHOWN	file	3685 D1 V2-260203
direction		project no.	3685
		sheet no.	D-1

\*NOTED SCALE IS APPLICABLE ONLY WHEN PRINTED ON ARCH D (24"x36") SIZE SHEET

**SPECIFICATIONS**

**GENERAL**  
THESE SPECIFICATIONS ARE TO BE READ IN CONJUNCTION WITH THE GENERAL CONDITIONS OF THE CONTRACT AS PREPARED BY AND AVAILABLE AT THE OFFICE OF ALEXANDER BUDREVICS & ASSOCIATES LTD.

PRIOR TO COMMENCING WORK, THE CONTRACTOR SHALL:  
1. FAMILIARIZE HIMSELF WITH THE PLANS, DETAILS AND SPECIFICATIONS OF THIS PROJECT.  
2. VISIT THE SITE TO ASCERTAIN AND TAKE ACCOUNT OF EXISTING CONDITIONS AND ANY DEVIATIONS FROM THE PLANS IN WORK BY OTHERS, AND  
3. FINALIZE ALL DESIGN ALTERNATIVES IN CONSULTATION WITH THE LANDSCAPE ARCHITECT.

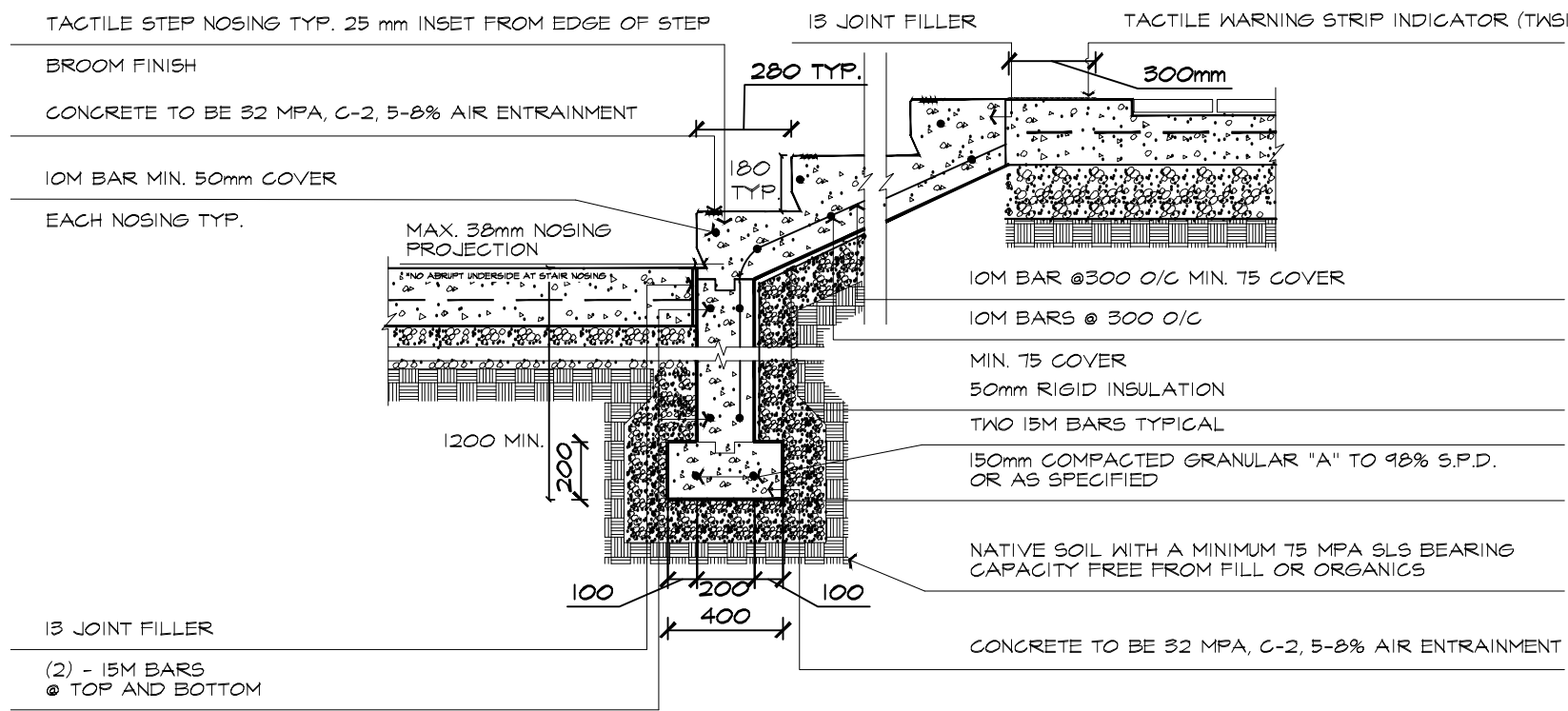
PRIOR TO EXCAVATING, THE CONTRACTOR SHALL VERIFY THE LOCATION OF ALL UNDERGROUND UTILITIES. IN THE EVENT OF A CONFLICT BETWEEN A PROPOSED TREE LOCATION AND AN UNDERGROUND SERVICE, THE EXACT LOCATION OF THE TREE SHALL BE DETERMINED ON SITE BY THE LANDSCAPE ARCHITECT.

THE CONTRACTOR SHALL AT HIS OWN EXPENSE, REPAIR ANY DAMAGE TO EXISTING UTILITIES, STRUCTURES, FACILITIES, ETC. DONE IN THE PERFORMANCE OF HIS WORK.

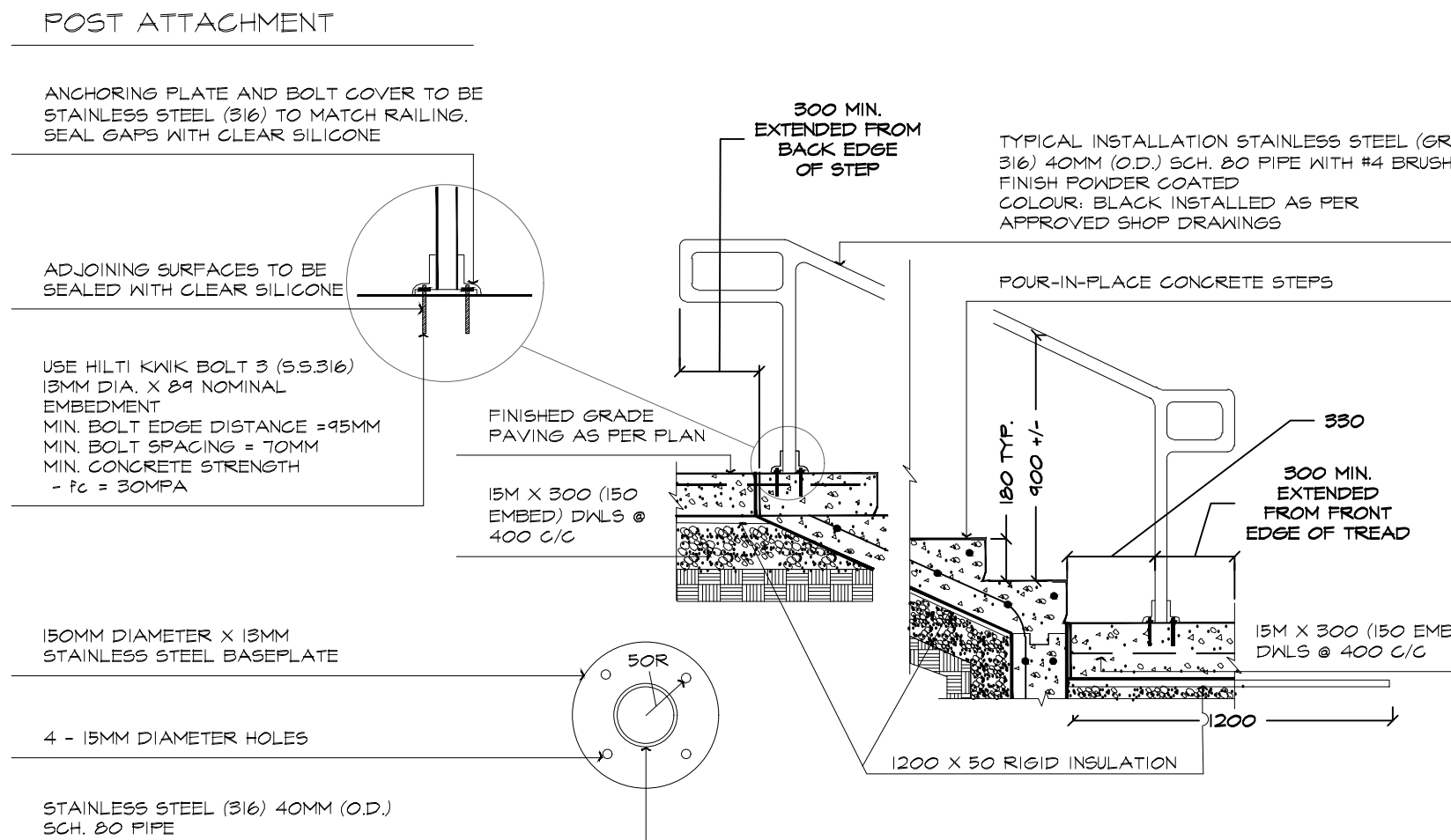
ALL SITE WORK SHALL CONFORM TO THE CANADIAN LANDSCAPE STANDARD and CANADIAN NATIONAL MASTER CONSTRUCTION SPECIFICATIONS. A COPY OF WHICH CAN BE OBTAINED FROM: CONSTRUCTION SPECIFICATIONS CANADA, Tel. (416) 777-2198, Fax: (416) 777-2199, Email: info@cscc-ccc.ca. IT IS THE RESPONSIBILITY OF THE CONTRACTOR TO BE THOROUGHLY FAMILIAR WITH THESE SPECIFICATIONS AND THEIR IMPLICATIONS FOR THIS PROJECT.

**SOFT LANDSCAPING**  
**PLANT MATERIALS**  
ALL PLANTS SHALL BE INSTALLED TRUE TO SPECIFIED NAMES, SIZES, GRADES, ETC. AND SHALL CONFORM TO THE STANDARDS OF THE CANADIAN NURSERY TRADES ASSOCIATION.  
ALL PLANTS SHALL BE NURSERY GROWN.  
IN THE EVENT OF A DISCREPANCY IN PLANT QUANTITY BETWEEN THE PLANTING PLAN AND THE PLANT LIST, THE PLANTING PLAN SHALL GOVERN.  
THE CONTRACTOR SHALL MAKE PLANTS AVAILABLE FOR INSPECTION BY THE LANDSCAPE ARCHITECT PRIOR TO INSTALLATION. MATERIAL NOT CONFORMING TO THE SPECIFICATIONS SHALL BE REPLACED AT THE EXPENSE OF THE CONTRACTOR.  
PLANT SUBSTITUTIONS MUST BE APPROVED IN WRITING BY THE OWNER OR THE LANDSCAPE ARCHITECT PRIOR TO DELIVERY OF THE MATERIAL ON SITE.  
THE LANDSCAPE ARCHITECT MAY, UPON COMPLETION OF THE WORK AND NOTWITHSTANDING PRIOR APPROVAL AT SOURCE, REJECT PLANT MATERIAL NOT CONFORMING TO THE SPECIFICATIONS.  
THE CONTRACTOR SHALL USE STANDARD INDUSTRY METHODS FOR PLANTING TREES. TREES SHALL BE TURNED TO GIVE THE BEST APPEARANCE. THEY SHALL ALSO BE GUYED AND STAKED IMMEDIATELY AFTER PLANTING AND AS DETAIL ON THE DRAWINGS.  
**BED PREPARATION**  
THE CONTRACTOR SHALL BACKFILL TREE PITS AND PLANTING BEDS TO SPECIFIED DEPTHS WITH EITHER PRE-MIXED TOPSOIL (VIZ., "TRIPLE-MIX") OR A MIXTURE, COMPRISED OF:  
6 PARTS SANDY LOAM  
1 PART FINELY PULVERIZED CANADIAN PEAT MOSS  
1 PART WELL-ROTTED FARM MANURE, WITH 20%FORM 20-10-5 TABLETS (OR APPROVED EQUAL) ADDED ACCORDING TO THE MANUFACTURER'S SPECIFICATIONS.  
THE CONTRACTOR SHALL CONSTRUCT TREE PITS AND SHRUB BEDS WITH SOIL SAUCERS, MULCH, AND SUBSURFACE DRAINAGE AS DETAILED.  
THE CONTRACTOR SHALL CONSTRUCT SHRUB BEDS IN CONTINUOUS FORMS. THE SHAPE OF WHICH SHALL BE APPROVED BY THE LANDSCAPE ARCHITECT AND/OR OWNER. ON SLOPES, SHRUB BEDS SHALL BE FASHIONED TO ALLOW FOR PROPER DRAINAGE.  
**TOPSOIL & FINE GRADING**  
THE CONTRACTOR SHALL PLACE 150mm OF RICH TOPSOIL ON APPROVED SUBGRADES. TOPSOIL SHALL BE IMPORTED WHERE REQUIRED. 10-4 FERTILIZER SHALL BE APPLIED ACCORDING TO THE MANUFACTURER'S INSTRUCTIONS AT A RATE OF 7.32 kg/100m<sup>2</sup> FOR SLOPED AREAS. THE MIXTURE AND RATE OF APPLICATION SHALL BE ADJUSTED FOR SEEDED AREAS.  
MINOR GRADE DEFICIENCIES AND IRREGULARITIES SHALL BE ELIMINATED PRIOR TO SODDING.  
**SODDING**  
THE CONTRACTOR SHALL SOD ALL AREAS SO INDICATED ON THE DRAWINGS. SOD SHALL BE FRESHLY CUT NO. 1 GRADE NURSERY-GROWN TURF 50-75mm THICK.  
SOD FOR SUNNY, EXPOSED AREAS SHALL BE 50% KENTUCKY BLUEGRASS AND 50% MERON BLUEGRASS. SOD FOR SHADED AREAS SHALL BE 50% NUGGET KENTUCKY BLUEGRASS AND 50% CREEPING RED FESCUE.  
SOD SHALL BE PLACED ON PREPARED TOPSOIL, WITH JOINTS STAGGERED AND SECTIONS ABUTTED TIGHTLY. IMMEDIATELY AFTER LAYING, IRRIGATION SUFFICIENT TO ENSURE MOISTURE PENETRATION TO A DEPTH OF 100mm SHALL BE APPLIED.  
SOD SHALL BE MACHINE ROLLED TO ENSURE UNIFORM CONTACT WITH TOPSOIL. SOD ON ALL SLOPES SHALL BE PEGGED WHERE REQUIRED.  
**TERRASEEDING**  
THE CONTRACTOR SHALL TERRASEED ALL AREAS WITH SPECIFIED SEED MIXTURES AS NOTED ON DRAWINGS.

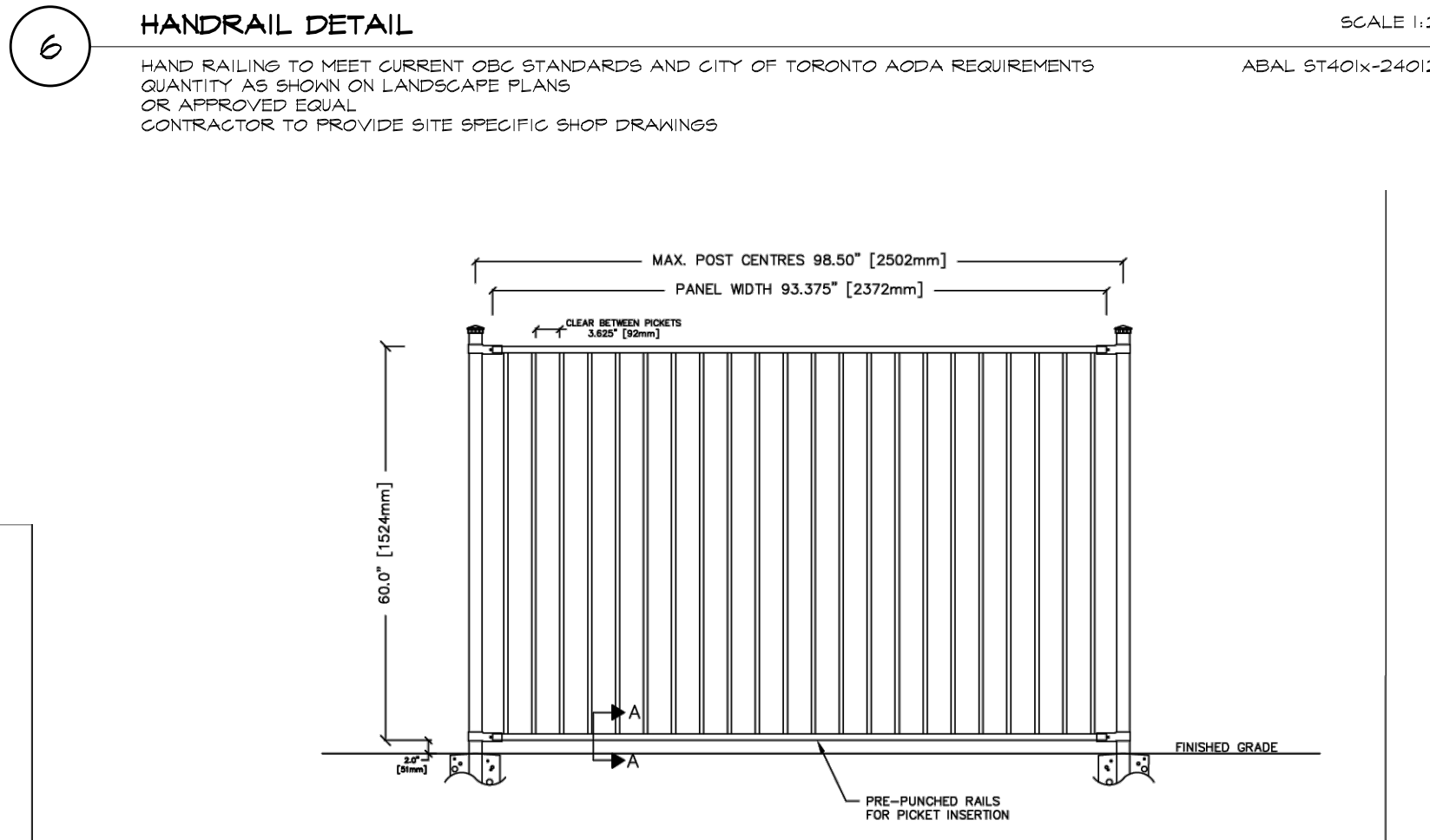
DEPENDING ON SLOPE GRADATION, DEPTH OF COMPOSTED SOIL, SEED SHALL BE AS FOLLOWS:  
0-5% SLOPE: 10-15 mm DEPTH  
5-10% SLOPE: 15-20 mm DEPTH  
10-25% SLOPE: (4:1) 20-25 mm DEPTH  
25-35% SLOPE: (1:1) 25-40 mm DEPTH  
35-45% SLOPE: 40-50 mm DEPTH  
THE CONTRACTOR SHALL FERTILIZE AS RECOMMENDED BY SEED SUPPLIER.  
WATER AS REQUIRED TO OBTAIN THICK GROWTH. FOLLOW UP OVERSEEDING IS PART OF THIS WORK.  
**HARD LANDSCAPING**  
**POURED-IN-PLACE CONCRETE WORK**  
THE CONTRACTOR SHALL OBTAIN WRITTEN APPROVAL OF FORMWORK PRIOR TO POURING CONCRETE. ALL CONCRETE, STEEL REINFORCING, AND FORMWORK SHALL BE AS DETAILED AND SPECIFIED ON THE DRAWINGS.  
THE STYLE, COLOUR, AND FINISH OF CONCRETE ELEMENTS SHALL BE APPROVED BY THE OWNER AND/OR LANDSCAPE ARCHITECT PRIOR TO THE COMMENCEMENT OF CONCRETE WORK.  
ALL STRUCTURAL CONCRETE WORK SHALL CONFORM TO LOCAL BUILDING CODES AND REGULATIONS.  
**BRICKWORK, STONEWORK & CONCRETE UNIT PAVING**  
WHERE APPLICABLE, THE CONTRACTOR SHALL OBTAIN WRITTEN APPROVAL FROM THE LANDSCAPE ARCHITECT OF ALL STRUCTURAL CONCRETE WORK BEFORE COMMENCING BRICKWORK, STONEWORK OR PAVING WORK.  
ALL BRICKWORK, STONEWORK, AND CONCRETE UNIT PAVING SHALL BE AS DETAILED AND SPECIFIED ON THE DRAWINGS, UNLESS THE LANDSCAPE ARCHITECT AND/OR THE OWNER APPROVE SUBSTITUTIONS IN WRITING.  
PRIOR TO STARTING THIS PORTION OF WORK, THE CONTRACTOR SHALL SUBMIT SAMPLES OF ALL PROPOSED BRICKWORK, STONEWORK, AND CONCRETE UNIT PAVERS FOR APPROVAL BY THE LANDSCAPE ARCHITECT AND/OR THE OWNER WITH RESPECT TO STYLE, COLOUR, AND FINISH. THE CONTRACTOR MAY ALSO BE ASKED TO SUBMIT SAMPLES OF ALTERNATIVES TO THE MATERIALS SPECIFIED ON THE DRAWINGS.  
ALL BRICKWORK, STONEWORK, AND CONCRETE UNIT PAVING SHALL CONFORM TO LOCAL BUILDING CODES AND OTHER MUNICIPAL REQUIREMENTS.  
**MAINTENANCE**  
THE CONTRACTOR SHALL MAINTAIN ALL LANDSCAPED AREAS FOR A PERIOD OF FOUR (4) GROWING MONTHS FROM THE DATE OF SUBSTANTIAL COMPLETION.  
MAINTENANCE SHALL INCLUDE:  
- PROPER IRRIGATION TO ENSURE OPTIMUM GROWTH OF TREES, SHRUBS, AND SOD  
- GRASS MOWING TO MAINTAIN AN APPROXIMATE HEIGHT OF 50mm  
- THE CULTIVATION AND WEEDING OF TREE PITS AND PLANTING BEDS  
- INSECT AND DISEASE CONTROL  
AT THE END OF THE SPECIFIED MAINTENANCE PERIOD, PROVIDED ALL PLANT MATERIAL IS ALIVE AND IN A HEALTHY GROWING CONDITION, THE OWNER WILL ASSUME THE RESPONSIBILITY OF MAINTAINING THE LANDSCAPE WORK.  
**PERFORMANCE ACCEPTANCE (SUBSTANTIAL COMPLETION)**  
WRITTEN NOTICE OF PERFORMANCE ACCEPTANCE BY THE LANDSCAPE ARCHITECT FOR SUBSTANTIAL COMPLETION OF THE PROJECT LANDSCAPE WORKS SHALL MARK THE START OF THE GUARANTEE PERIOD.  
SHOULD LOCAL LAW REQUIRE MUNICIPAL ACCEPTANCE, THE LANDSCAPE ARCHITECT WILL SUBMIT THE SUBSTANTIAL COMPLETION CERTIFICATE TO THE MUNICIPALITY SO THAT THEY MAY PROCEED TO INSPECT THE WORK. ISSUE THEIR PERFORMANCE ACCEPTANCE CERTIFICATE, AND REDUCE THE AMOUNT OF SECURITIES.  
**GUARANTEE**  
ALL PLANT MATERIAL SHALL BE GUARANTEED FOR ONE (1) YEAR FROM THE DATE, ON THE PERFORMANCE ACCEPTANCE CERTIFICATE ISSUED BY THE LANDSCAPE ARCHITECT. PLANTS THAT EXPIRE OR OTHERWISE FAIL TO THRIVE DURING THE GUARANTEE PERIOD SHALL BE REPLACED AT THE EXPENSE OF THE CONTRACTOR.  
SIMILARLY, ALL OTHER LANDSCAPE WORK PERFORMED UNDER THIS CONTRACT SHALL BE FULLY GUARANTEED FOR ONE (1) YEAR FROM THE DATE OF PERFORMANCE ACCEPTANCE BY THE LANDSCAPE ARCHITECT.  
**FINAL ACCEPTANCE**  
ALL WORK SHALL BE INSPECTED AT THE END OF THE GUARANTEE PERIOD BY THE LANDSCAPE ARCHITECT. ANY DEFICIENCIES SHALL BE RECTIFIED BY THE CONTRACTOR TO THE SATISFACTION OF THE LANDSCAPE ARCHITECT AND THE OWNER. THE LANDSCAPE ARCHITECT WILL THEN ISSUE A FINAL ACCEPTANCE CERTIFICATE.  
SHOULD LOCAL LAW REQUIRE MUNICIPAL ACCEPTANCE, THE LANDSCAPE ARCHITECT WILL SUBMIT THE FINAL ACCEPTANCE CERTIFICATE TO THE MUNICIPALITY SO THAT THEY MAY PROCEED TO INSPECT THE WORK, GIVE FINAL APPROVAL, AND RELEASE ALL OUTSTANDING LANDSCAPE SECURITIES.



**5 CONCRETE STEPS DETAIL** SCALE 1:25  
TYPICAL INSTALLATION ABAL 5101X-240124

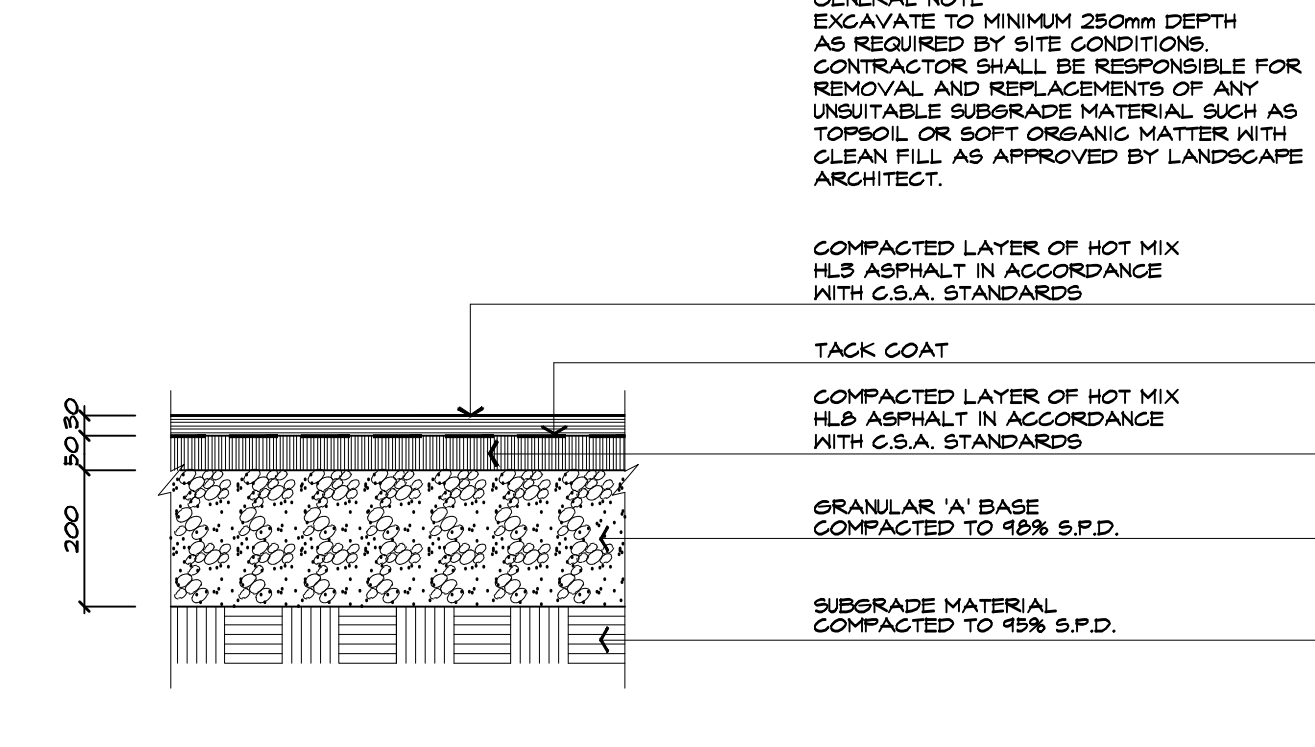


**6 HANDRAIL DETAIL** SCALE 1:25  
HAND RAILINGS TO MEET CURRENT OBC STANDARDS AND CITY OF TORONTO ADDA REQUIREMENTS QUANTITY AS SHOWN ON LANDSCAPE PLANS OR APPROVED EQUAL. CONTRACTOR TO PROVIDE SITE SPECIFIC SHOP DRAWINGS. ABAL 51401X-240124

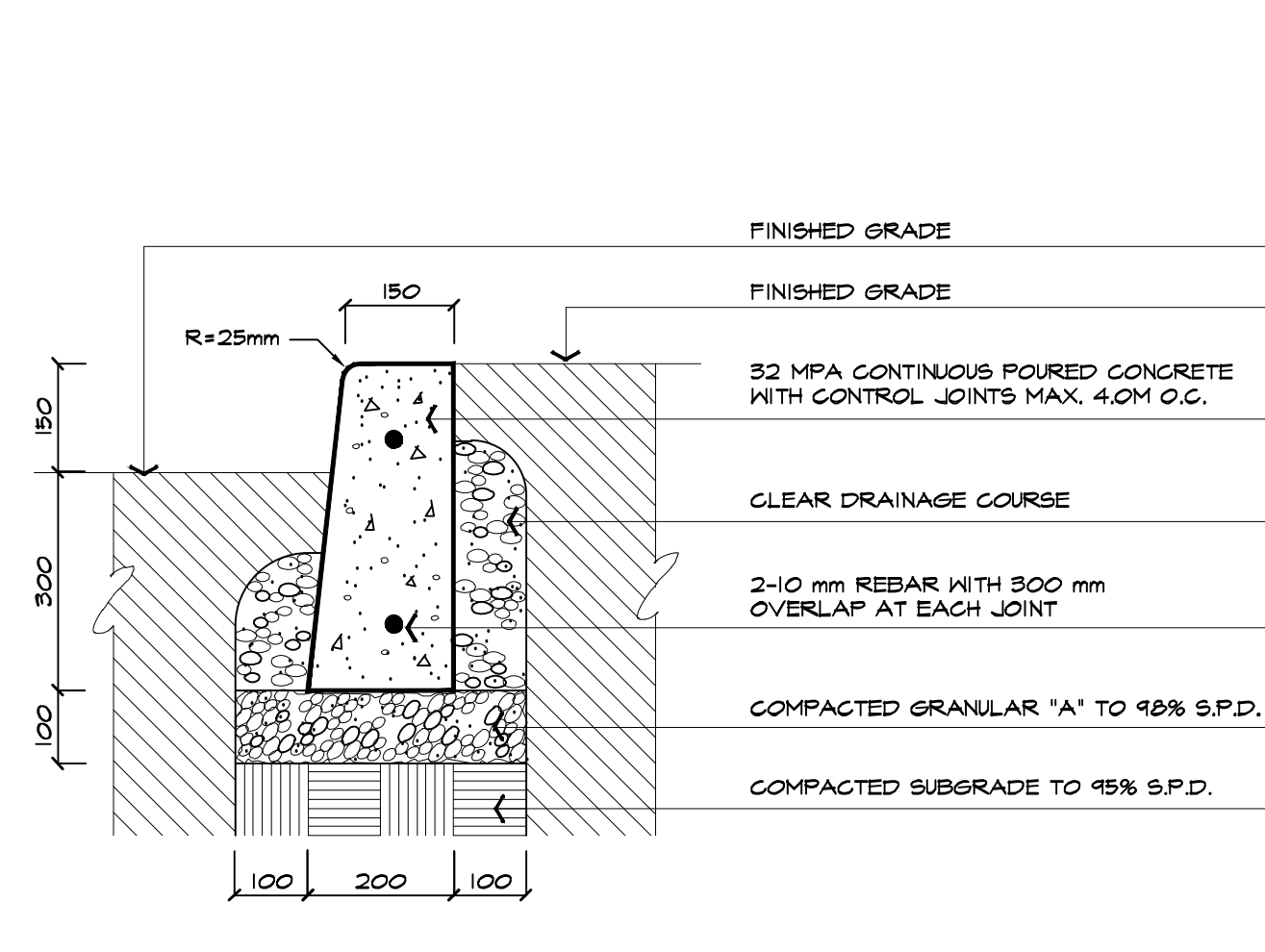


POSTS, RAILS & PICKETS:	EXTRUDED MARINE ALUMINUM 6061-T6 PRIME ALUMINUM, NORTH AMERICAN PRODUCED	STANDARD PANEL HEIGHTS:	SECTION A-A
FINISH:	SEVEN STAGE ARCHITECTURALLY CERTIFIED PRETREATMENT AS PER ANMA 2004. SUPER DURE ELECTROSTATICALLY APPLIED POWDER COAT - MIN THICKNESS 2.5 mils	762mm (30") 914mm (36") 1067mm (42") 1219mm (48") 1524mm (60") SHOWN 1829mm (72")	.125WALL .180WALL RAIL
POSTS:	51mm x 51mm (2"x2"), .125 WALL STANDARD (.180 WALL AVAILABLE)	STANDARD PANEL WIDTH:	
POST FLANGES:	76mm x 152mm x 8.9mm (3"x6"x7/8") OPTION: 127mm x 127mm x 5mm (5"x5"x7/8") DECK PLATE	2372mm (93") (PANELS MAY BE CUT TO SUIT)	
POST CAPS:	PYRAMID, BALL, SPIRE OR ACORN		
RAILS:	25mm x 25mm (1" x 1"), .125 WALL (top and bottom), .180 WALL (sidewall)	COLOR:	STANDARD COLORS ARE BLACK, SEMI-BLACK, BROWN, GREEN, WHITE AND FOREST GREEN (CUSTOM COLORS AVAILABLE UPON REQUEST)
PICKETS:	16mm x 16mm (5/8" x 5/8"), .080 WALL	WARRANTY:	20 YEAR LIMITED
WELDS:	ALUMINUM - FULL TACK BOTH SIDES OF PICKET	NOTE:	TAMPER PROOF NUT AVAILABLE FOR BRACKETS

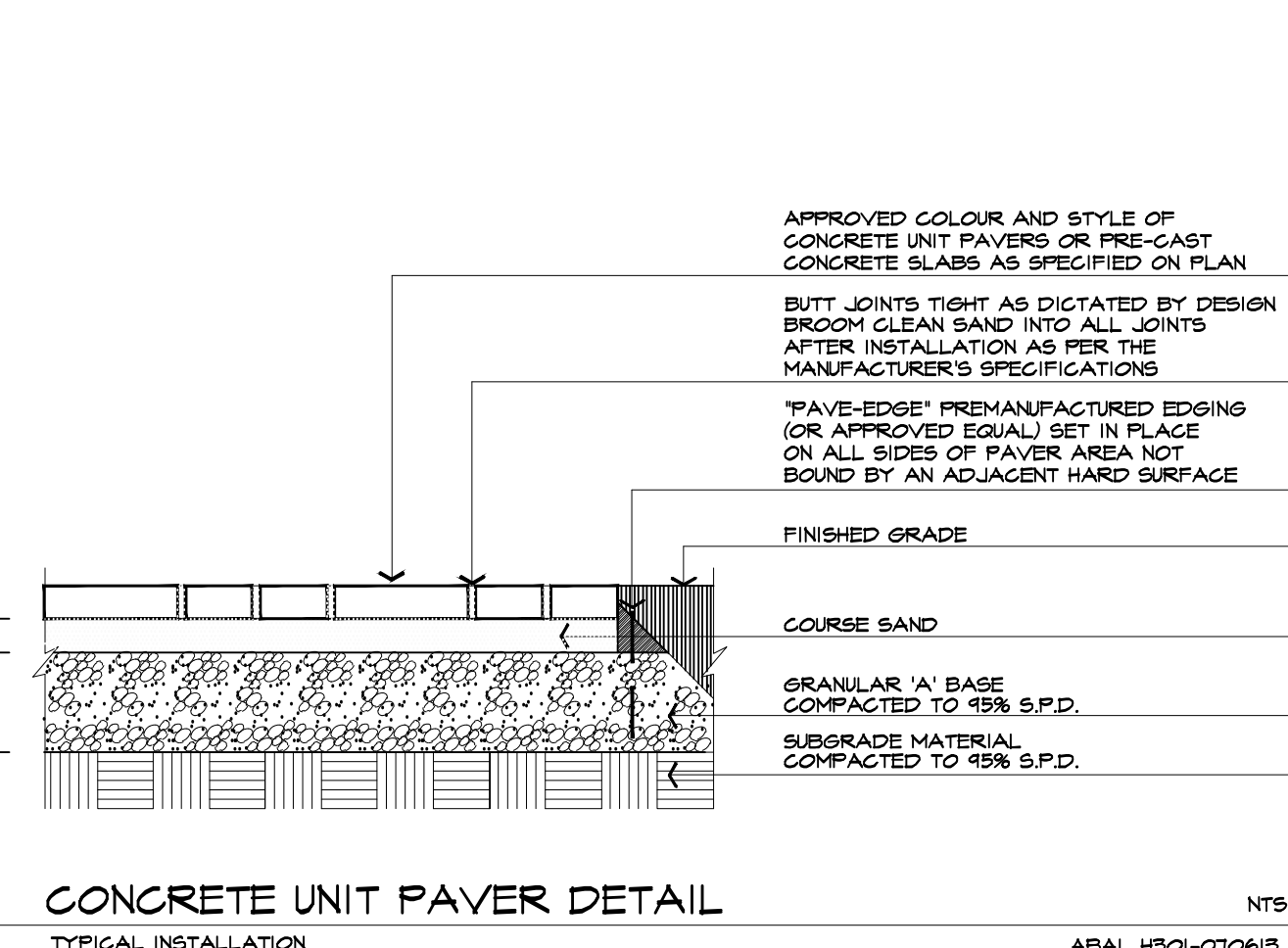
**7 DECORATIVE METAL FENCE DETAIL**  
MANUFACTURER: IRON EAGLE  
PRODUCT: IRON EAGLE I 2040  
HEIGHT: 1219mm HIGH  
POST CAP: PYRAMID  
\*OR APPROVED SUBSTITUTE



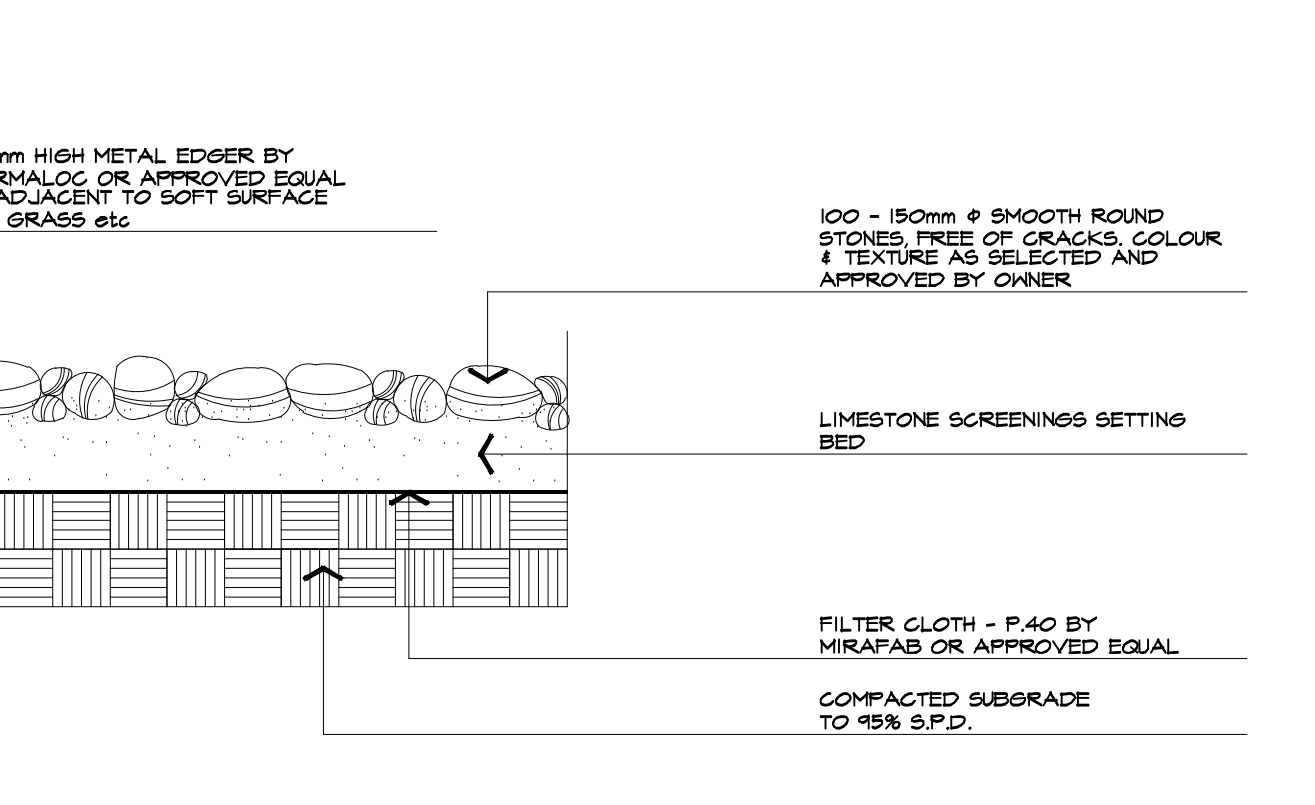
**1 ASPHALT PAVING DETAIL** NTS  
TYPICAL INSTALLATION ABAL H503-140412



**2 CONCRETE CURB DETAIL** NTS  
ABAL H101-140315



**3 CONCRETE UNIT PAVER DETAIL** NTS  
TYPICAL INSTALLATION ABAL H201-070613



**4 BEACHSTONES DETAIL** NTS  
ABAL H601-450518

**GENERAL NOTES - LANDSCAPING**

**NOTE 1**  
DEPICTED ON THIS PLAN ARE THE SPECIES AND THE APPROXIMATE LOCATION OF STREET TREE. ONCE DRIVEWAYS, UTILITIES AND LIGHT STANDARDS HAVE BEEN INSTALLED, THE EXACT LOCATION OF STREET TREES WILL BE DETERMINED ON SITE BY THE LANDSCAPE CONSULTANT AND APPROVED BY THE MUNICIPALITY PRIOR TO PLANTING.

**NOTE 2**  
MINIMUM CLEARANCES FOR STREET TREES (WHEN TREES ARE PLANTED 1.5M FROM THE CURB):  
2M FROM WATER HYDRANTS  
2M FROM DRIVEWAYS  
2M FROM NEIGHBOURHOOD MAILBOXES  
3M FROM HYDRO TRANSFORMERS  
5M FROM STREETLIGHTS  
15M MINIMUM FROM STREET LINE (STREET INTERSECTION AS MEASURED FROM BACK OF CURB) AND BEHIND THE DAYLIGHT TRIANGLE AS PER THE GEOMETRIC DESIGN STANDARDS FOR ONTARIO HIGHWAYS  
18M FROM FACE OF ALL WARNING AND REGULATORY SIGNS

**NOTE 3**  
THE TREE PITS AND PLANTING BEDS FOR ALL TREES AND SHRUBS LOCATED WITHIN 1 METRE OF UNDERGROUND UTILITIES ARE TO BE HAND DUG.

TOWN OF CALEDON				APRD:	C.C.	DATE:	APRIL 2000
GENERAL LANDSCAPING NOTES	2	TEXT REVISION, STD103 NOW 700	JAN 18	GRAHNN:	BJM	SCALE:	NTS
	1	STANDARD No. 130 NOW 103	JUNE 08				
	NO.	REVISION	APRD	DATE	STANDARD No. 700		

All information hereon to be checked and verified at the site and any discrepancies must be reported to and clarified by the landscape architect before commencing work. All drawings, specifications, details, digital information, etc., prepared by the landscape architect are instruments of service and as such are his property and must be returned at his request.

**ALEXANDER BUDREVICS & ASSOCIATES**  
LANDSCAPE ARCHITECTS  
885 Don Mills Road, Second Tower, Suite 212  
Toronto, Ontario, Canada, M3C 1W3  
416.444.5201  
www.budrevics.com

**ONTARIO ASSOCIATION OF LANDSCAPE ARCHITECTS**  
MEMBER  
SINCE A. KALLIUS

project  
**PROPOSED PARKING LOT DEVELOPMENT**  
PART OF BLOCK 3, REGISTERED PLAN 43M-2065  
14 STATION ROAD  
CALEDON, ONTARIO  
KING STATION DEVELOPMENTS

**LANDSCAPE DETAILS & SPECIFICATIONS**

date	NOVEMBER 14, 2023	drawn	RD
scale*	AS SHOWN	file	3685 D2 V2-260203
direction		project no.	3685
		sheet no.	D-2

\*NOTED SCALE IS APPLICABLE ONLY WHEN PRINTED ON ARCH D (24"x36") SIZE SHEET