

**PROJECT No. 13-B6595-3**

CLIENT: HARVESTSTONE CENTRE INC.  
PARTY CHIEF: BR. DRAWN BY: IO. CHECKED BY: FM.

2 HOLLAND DRIVE, UNIT 5, BOLTON, ONTARIO L7E 1E1  
PHONE 905.951.6000 - FAX 905.857.4811  
www.youngandyoung.ca - info@youngandyoung.ca

**YOUNG & YOUNG SURVEYING INC.**  
A Subsidiary of Harco Group Inc.

DATE: December 9, 2021  
FRANK MAURO, B.Tech.  
ONTARIO LAND SURVEYOR

I HEREBY CERTIFY THAT THE BOUNDARIES OF THE LAND TO BE SUBDIVIDED AS SHOWN ON THIS PLAN, AND THEIR RELATIONSHIP TO THE ADJACENT LAND ARE ACCURATELY AND CORRECTLY SHOWN.

**SURVEYOR'S CERTIFICATE**

DATE: December 16, 2021  
VANCE VUKOTIC  
HARVESTSTONE CENTRE INC.

I AUTHORIZE YOUNG & YOUNG SURVEYING INC. TO PREPARE AND SUBMIT THIS DRAFT PLAN OF STANDARD CONDOMINIUM TO THE TOWN OF CALEDON FOR APPROVAL.

**OWNER'S CERTIFICATE**

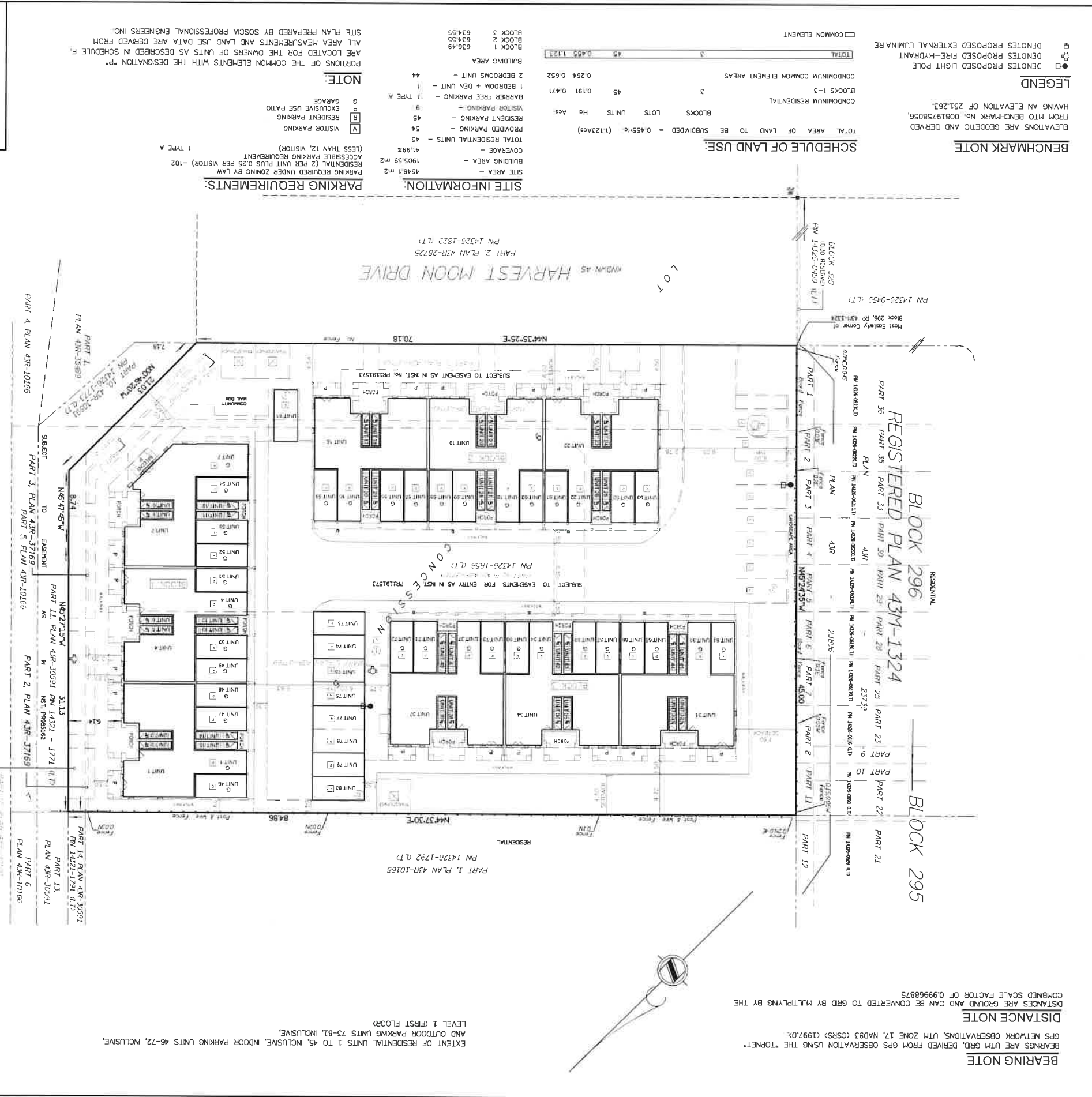
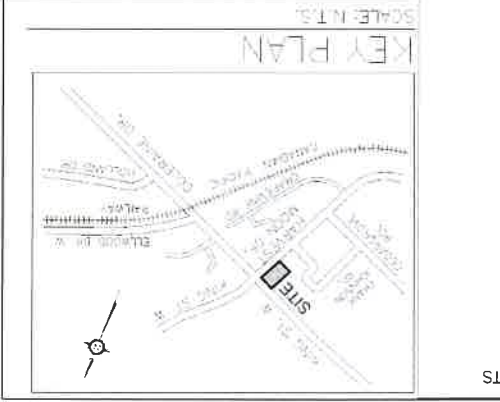
A. AS SHOWN ON DRAFT PLAN  
B. AS SHOWN ON DRAFT PLAN  
C. AS SHOWN ON DRAFT PLAN  
D. SEE SCHEDULE OF LAND USE  
E. AS SHOWN ON DRAFT PLAN  
F. AS SHOWN ON DRAFT PLAN  
G. AS SHOWN ON DRAFT PLAN  
H. MINOR PAVED WATER AVAILABLE AT TIME OF DEVELOPMENT  
I. CLAY LOAM  
J. AS SHOWN ON DRAFT PLAN  
K. SANITARY AND STORM SEWERS, GARBAGE COLLECTION, FIRE PROTECTION  
L. AS SHOWN ON DRAFT PLAN

**SECTION 51, PLANNING ACT, ADDITIONAL INFORMATION**

A. AS SHOWN ON DRAFT PLAN  
B. AS SHOWN ON DRAFT PLAN  
C. AS SHOWN ON DRAFT PLAN  
D. SEE SCHEDULE OF LAND USE  
E. AS SHOWN ON DRAFT PLAN  
F. AS SHOWN ON DRAFT PLAN  
G. AS SHOWN ON DRAFT PLAN  
H. MINOR PAVED WATER AVAILABLE AT TIME OF DEVELOPMENT  
I. CLAY LOAM  
J. AS SHOWN ON DRAFT PLAN  
K. SANITARY AND STORM SEWERS, GARBAGE COLLECTION, FIRE PROTECTION  
L. AS SHOWN ON DRAFT PLAN

**DRAFT PLAN OF STANDARD CONDOMINIUM OF PART OF LOT 9, CONCESSION 5 (GEOGRAPHIC TOWNSHIP OF ALBION) TOWN OF CALEDON REGIONAL MUNICIPALITY OF PEEL**

YOUNG & YOUNG SURVEYING INC.  
ONTARIO LAND SURVEYORS  
DISTANCES AND COORDINATES SHOWN ON THIS PLAN ARE IN METRES AND CAN BE CONVERTED TO FEET BY DIVIDING BY 0.3048.



**BEARING NOTE**

BEARINGS ARE UTM GRID, DERIVED FROM GPS OBSERVATION USING THE "TORNET" GPS NETWORK OBSERVATIONS, UTM ZONE 17, NAD83 (CSRS) (1997.0).

**DISTANCE NOTE**

DISTANCES ARE GROUND AND CAN BE CONVERTED TO GRID BY MULTIPLYING BY THE COMBINED SCALE FACTOR OF 0.999688875.

PROJECT No. 13-B6595-3

PARTIAL PROJECT\2021\B6595-3\PART PLAN\2.DWG


CLIENT: HARVESTONE CENTRE INC.

PARTY CHIEF: BF DRAWN BY: IG CHECKED BY: FM

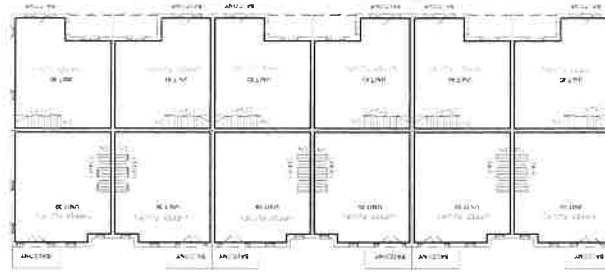
WWW.YOUNGANDYOUNG.COM  
 PHONE 905.951.6000 - FAX 905.857.4811  
 INFO@YOUNGANDYOUNG.COM

2 HOLLAND DRIVE, UNIT 5, BOLTON, ONTARIO L7E 1E1

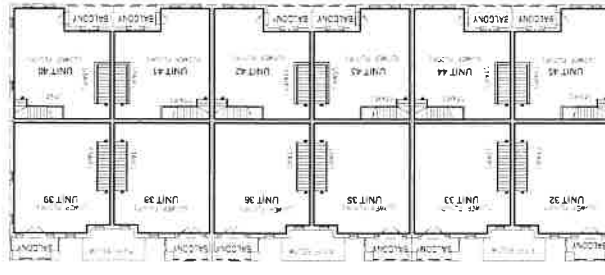
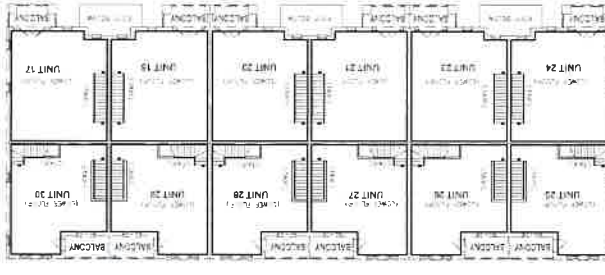
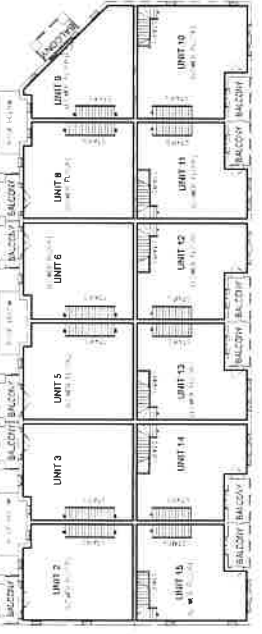
A Subsidiary of Moore Group Inc.



**YOUNG & YOUNG**  
 SURVEYING INC.



EXTENT OF RESIDENTIAL UNITS 2-3, 5-6, 8-15, 17-18, 20-21, 23-24, 25-30, 32-33, 35-36, 38-45  
 LEVEL 2 (THIRD FLOOR)



EXTENT OF RESIDENTIAL UNITS 2-3, 5-6, 8-15, 17-18, 20-21, 23-24, 25-30, 32-33, 35-36, 38-45  
 LEVEL 2 (SECOND FLOOR)