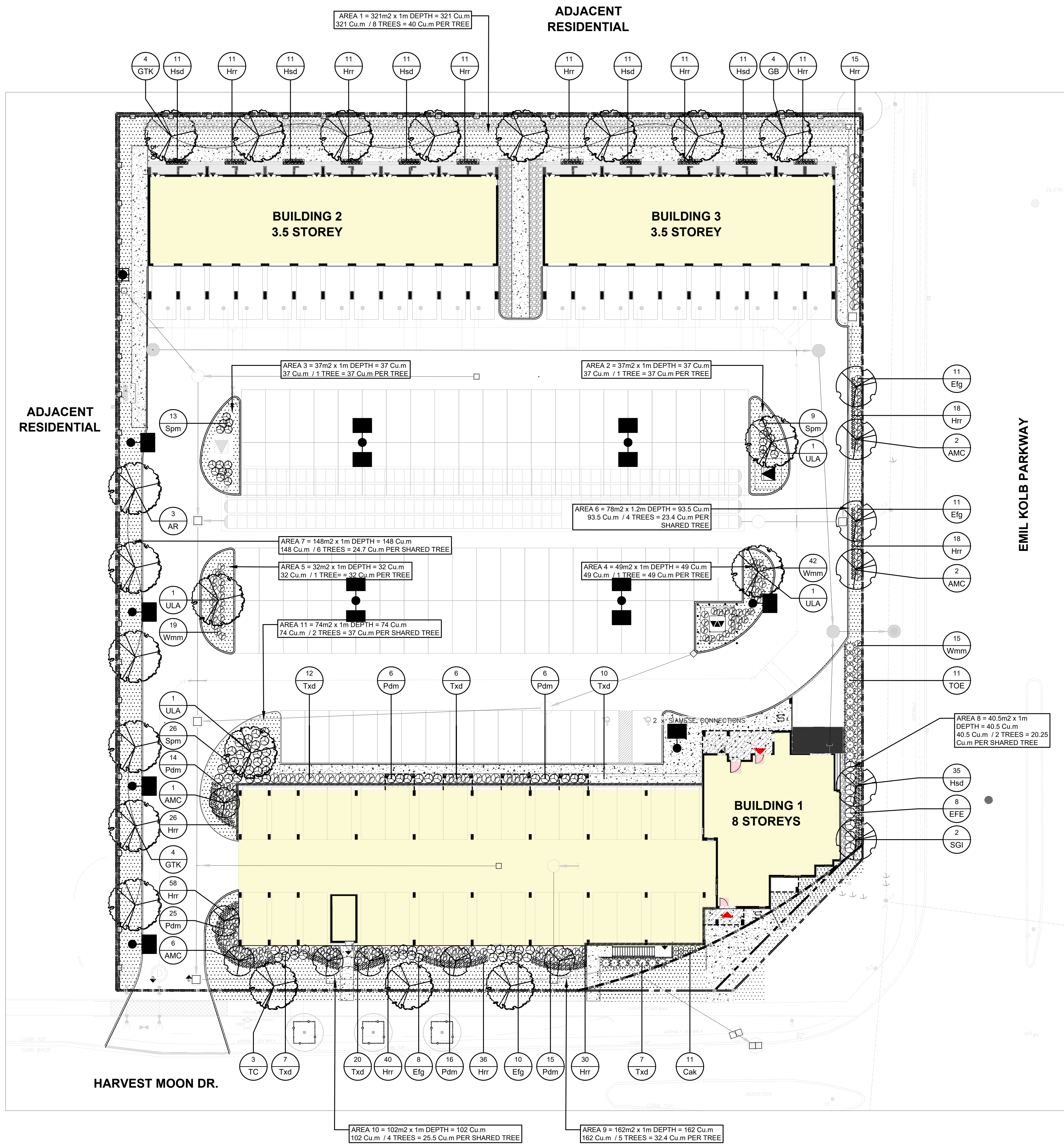


user: gibbons file: L:\PL Projects\2024\2024-046 - Emil Kolb Parkway (Bolton) ZBA-SPA\1.0 Site Plan Phase\CAD\2024-046_241128_R00_SPA.dwg plot: Feb 26, 2025 - 10:17am



GENERAL PLANTING AND BED PREPARATION NOTES:

PLANT PERFORMANCE:

- ALL PLANT MATERIAL SHALL BE NURSERY STOCK CONFORMING TO THE LATEST EDITION OF THE CANADIAN STANDARDS FOR NURSERY STOCK AS PUBLISHED BY THE CANADIAN NURSERY LANDSCAPE ASSOCIATION.
- ALL PLANTS SHALL BE HEALTHY, VIGOROUS PLANTS, FREE FROM DEFECTS, DECAY, DISFIGURING ROOTS, SUN-SCALD INJURIES, BARK ABRASIONS, PLANT DISEASES AND PESTS AND ALL FORMS OF INFESTATIONS OR OBJECTIONABLE DISFIGUREMENTS.
- ALL PLANTS SHALL BE TRUE TO NAME, SIZE, CONDITION AND QUANTITY AS PER PLAN AND PLANT LIST SPECIFICATIONS.
- ALL PLANT MATERIAL SHALL BE UNWRAPPED PRIOR TO INSPECTION. THE LANDSCAPE ARCHITECT RESERVES THE RIGHT TO INSPECT ALL PLANT MATERIAL AND REJECT ALL MATERIAL THAT DOES NOT MEET THE STANDARDS LISTED HEREIN.
- SUBSTITUTIONS WILL NOT BE ACCEPTED WITHOUT PRIOR WRITTEN REQUEST BY THE CONSULTING LANDSCAPE ARCHITECT. ADDITIONAL PLANT QUANTITIES WILL BE REQUIRED TO COMPENSATE FOR APPROVED REDUCTION IN SIZE DUE TO UNAVAILABILITY OF MATERIALS, TO THE SATISFACTION OF THE LANDSCAPE ARCHITECT.
- ALL TREES SHALL BE OPEN-GROWN FOR WIND-FIRMNESS. TREES SHALL NOT BE LEANING OR HAVE SIGNIFICANT SWEEP, CROOK OR BEND. DECIDUOUS TREES SHALL HAVE APPROXIMATELY TWO-THIRDS OF THEIR TOTAL HEIGHT IN LIVING BRANCHES. ALL TREES SHALL HAVE GOOD GROWN SHAPE AND COLOUR (EVERGREENS) CHARACTERISTIC OF THEIR SPECIES. TREES SHALL HAVE A SINGLE DOMINANT LEADER WITH NO SIDE BRANCHES TALLER / LONGER THAN THE MAIN LEADER.
- IF REQUIRED, TREES SHALL BE PROPERLY TARGET PRUNED (NEVER FLUSH CUT, TRIMMED, ROUNDED-OVER, HEDGED, TIPPED OR TOPPED) AND DEAD / DAMAGED BRANCHES SHALL BE REMOVED. BRANCHES THAT CROSS-OVER EACH OTHER OR RUB AGAINST EACH OTHER, CO-DOMINANT LEADERS, AND BRANCHES GROWING UPWARD INSIDE THE CROWN SHALL BE PROPERLY PRUNED. TREES SHALL NOT BE TREATED AT ANY TIME WITH WOUND PAINT.
- ALL TREES SHALL HAVE ROOT BALL SIZES THAT MEET OR EXCEED NURSERY STANDARDS. ROOT BALLS SHALL BE FIRM AND STRUCTURALLY INTEGRAL WITH THE TRUNK.
- SHRUBS AND GROUND COVERS SHALL HAVE FULL, WELL BRANCHED CROWNS TYPICAL OF SPECIES OR VARIETY. ROOT SYSTEMS SHALL BE AMPLE, WELL-BALANCED AND FIBROUS, CAPABLE OF SUSTAINING VIGOROUS GROWTH. PLANTS THAT ARE WEAK OR THIN, UNDERSIZED, OR HAVE BEEN CUT BACK FROM LARGER GRADES TO MEET SPECIFICATIONS SHALL BE REJECTED.
- ALL SOD SHALL BE TURFGRASS NURSERY SOD CONFORMING TO THE LATEST SPECIFICATIONS OF THE ONTARIO SOD ASSOCIATION AND THE THE NURSERY SOD GROWERS ASSOCIATION.

TOPSOIL REQUIREMENTS:

- SOD AND SEED: 300mm DEPTH
TOPSOIL MAKE UP: TOPSOIL SHALL BE A FERTILE, NATURAL LOAM, CAPABLE OF SUSTAINING HEALTHY GROWTH, CONTAINING A MINIMUM OF 4% ORGANIC MATTER FOR CLAY LOAMS AND 2% ORGANIC MATTER FOR SANDY LOAM, TO A MAXIMUM OF 25% BY VOLUME. TOPSOIL SHALL BE LOOSE AND FRIABLE, FREE OF SUBSOIL, CLAY LUMPS, STONES, ROOTS OR ANY OTHER DELETERIOUS MATERIAL GREATER THAN 50MM DIAMETER. TOPSOIL SHALL BE FREE OF ALL LITTER AND TOXIC MATERIALS THAT MAY BE HARMFUL TO PLANT GROWTH. TOPSOIL CONTAINING SOD CLUMPS, CRABGRASS, COUCHGRASS OR OTHER NOXIOUS WEEDS IS NOT ACCEPTABLE. TOPSOIL SHALL NOT BE DELIVERED OR PLACED IN A FROZEN OR EXCESSIVELY WET CONDITION. TOPSOIL ACIDITY / ALKALINITY SHALL BE IN THE RANGE OF 6.0PH TO 7.5PH.
- TREE PITS: 900mm DEPTH
TRIPLE MIX
- CONTINUOUS TREE PITS: 900mm DEPTH
TRIPLE MIX
- CONTINUOUS BEDS: 900mm DEPTH
TRIPLE MIX

SERVICES, STAKEOUTS & PLANTING ADJUSTMENTS

- CONTRACTORS SHALL OBTAIN STAKEOUTS FROM ALL UTILITIES PRIOR TO LANDSCAPE INSTALLATIONS.

REFER TO SHEET D-1 FOR TOWN
OF CALEDON GENERAL
LANDSCAPE NOTES & DETAILS

PLANT LIST

DECIDUOUS TREES

Count	Key	BOTANICAL NAME	COMMON NAME	CALIPER	HEIGHT	ROOT	SPREAD	NOTE
4	GB	Ginkgo biloba	Maidenhair Tree	60mm	-	W.B.	-	9-10m SPACING O/C
8	GTK	Gleditsia triacanthos inermis "Skyline"	Skyline Honey-Locust	60mm	-	W.B.	-	9-10m SPACING O/C
4	ULA	Ulmus japonica x wilsoniana "Morton"	Accolade Elm	60mm	-	W.B.	-	9-10m SPACING O/C
3	AR	Acer rubrum	Red Maple	60mm	-	W.B.	-	9-10m SPACING O/C
11	AMC	Amelanchier canadensis	Serviceberry	60mm	-	W.B.	-	9-10m SPACING O/C
2	SGI	Syringa reticulata "Ivory Silk"	Ivory Silk Tree Lilac	60mm	-	W.B.	-	9-10m SPACING O/C
3	TC	Tilia cordata	Littleleaf Linden	60mm	-	W.B.	-	9-10m SPACING O/C

DECIDUOUS SHRUBS

Count	Key	BOTANICAL NAME	COMMON NAME	CALIPER	HEIGHT	ROOT	SPREAD	NOTE
59	Spm	Spiraea japonica "Flaming Mound"	Flaming Mound Spirea	-	60CM	3 GAL.	-	-
76	Wmm	Weigela florida "Vernwig"	My Monet Weigela	-	60CM	3 GAL.	-	-
82	Pdm	Physocarpus opulifolius "Donna May"	Little Devil Ninebark	-	60CM	3 GAL.	-	-

CONIFEROUS TREES

Count	Key	BOTANICAL NAME	COMMON NAME	CALIPER	HEIGHT	ROOT	SPREAD	NOTE
11	TOE	Thuja occidentalis "Emerald"	Emerald Cedar	-	200CM	-	W.B.	-

CONIFEROUS SHRUBS

Count	Key	BOTANICAL NAME	COMMON NAME	CALIPER	HEIGHT	ROOT	SPREAD	NOTE
8	EFE	Euonymus fortunei "Emerald Gaiety"	Emerald Gaiety Euonymus	-	60CM	3 GAL.	-	-
40	Efg	Euonymus fortunei "Emerald 'N Gold"	Emerald 'N Gold Euonymus	-	60CM	3 GAL.	-	-
62	Txd	Taxus media "Densaformis"	Dense Yew	-	60CM	3 GAL.	-	-

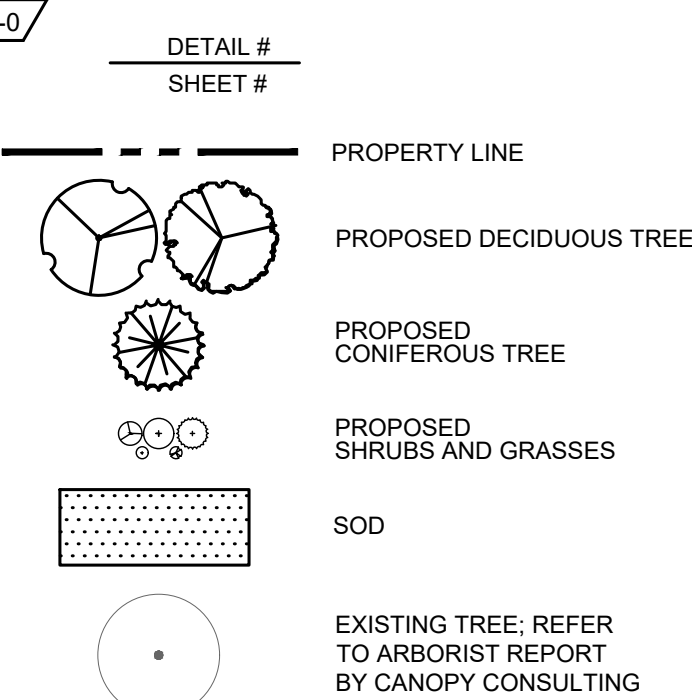
PERENNIALS & GRASSES

Count	Key	BOTANICAL NAME	COMMON NAME	CALIPER	HEIGHT	ROOT	SPREAD	NOTE
90	Hsd	Hemerocallis "Stella D'oro"	Stella d'Oro Daylily	-	-	1 GAL.	-	-
307	Hrr	Hemerocallis "Rosy Returns"	Rosy Returns Daylily	-	-	1 GAL.	-	-
11	Cak	Calamagrostis acutiflora "Karl Foerster"	Karl Foerster Feather Reed Grass	-	-	1 GAL.	-	-

TOWN OF CALEDON
PLANNING
RECEIVED
March 4, 2025



LEGEND:

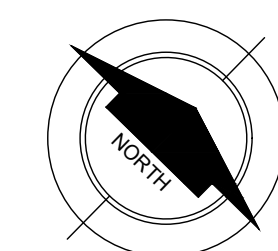


0m 5m 10m 15m

SCALE BAR: 1:250

NO.	ISSUED FOR SPA	revision	date	LG	by
R0	ISSUED FOR SPA		250226		

THESE DRAWINGS ARE THE PROPERTY OF LANDSCAPE PLANNING LIMITED AND SHALL NOT BE ALTERED, MODIFIED, REVISED OR CHANGED WITHOUT THE WRITTEN CONSENT OF LANDSCAPE PLANNING LIMITED. SEAL IS NOT VALID WITHOUT SIGNATURE OF THE LANDSCAPE ARCHITECT. DRAWINGS CANNOT BE USED FOR TENDER/CONSTRUCTION UNTIL SIGNED BY LANDSCAPE ARCHITECT.



project number
2024-046

landscape planning
LANDSCAPE ARCHITECTS
Suite 207, 95 Mural Street, Richmond Hill, Ontario L4B 3G2,
Tel. 905.669.6638, www.landscapeplan.ca

project title
BOLTON VILLAGE

13656 & 13668 EMIL KOLB PARKWAY
BOLTON, ON

city file: -

municipality: TOWN OF BOLTON

drawing title

**LANDSCAPE/SURFACE
MATERIALS PLAN
(INTERIM CONDITION)**

drawn by reviewed by drawing number:

ZC JS

date

NOV. 2024

scale

1:250
(24x36")

L-2