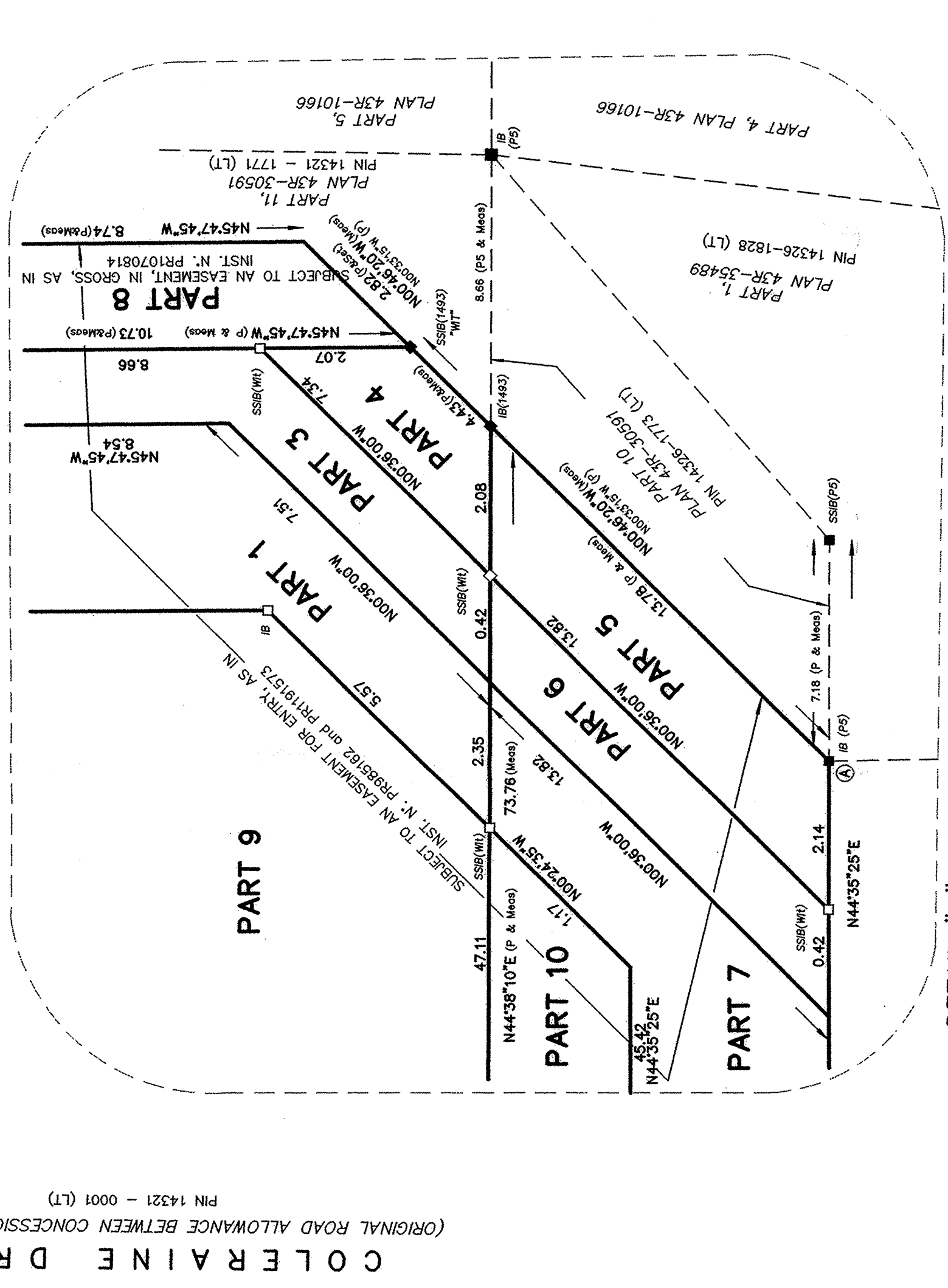


**PLAN 43R-37169**  
 RECEIVED AND DEPOSITED  
 DATE 2021.11.16  
 REPRESENTATIVE FOR THE LAND  
 DIVISION OF PEEL (No. 43)

SCHEDULE		CONCESSION	
PART	PART OF LOT	PIN	
1		14326-1772 (LT)	
2		14326-1774 (LT)	
3		14326-1774 (LT)	
4		14326-1774 (LT)	
5		14326-1774 (LT)	
6		14326-1774 (LT)	
7		14326-1774 (LT)	
8		14326-1774 (LT)	
9		14326-1774 (LT)	
10		14326-1774 (LT)	

PART 1, 2, 3, 4, 8 AND 9 COMPRISE ALL OF PIN 14326-1772 (LT)  
 PART 5, 6, 7 AND 10 COMPRISE ALL OF PIN 14326-1774 (LT)  
 PARTS 1 TO 10 S/T EASEMENTS FOR ENTRY AS IN INSTRUMENT NO. PR885162 AND PR191573.  
 PART 8 S/T EASEMENT, IN GROSS, AS IN INSTRUMENT NO. PR1070814

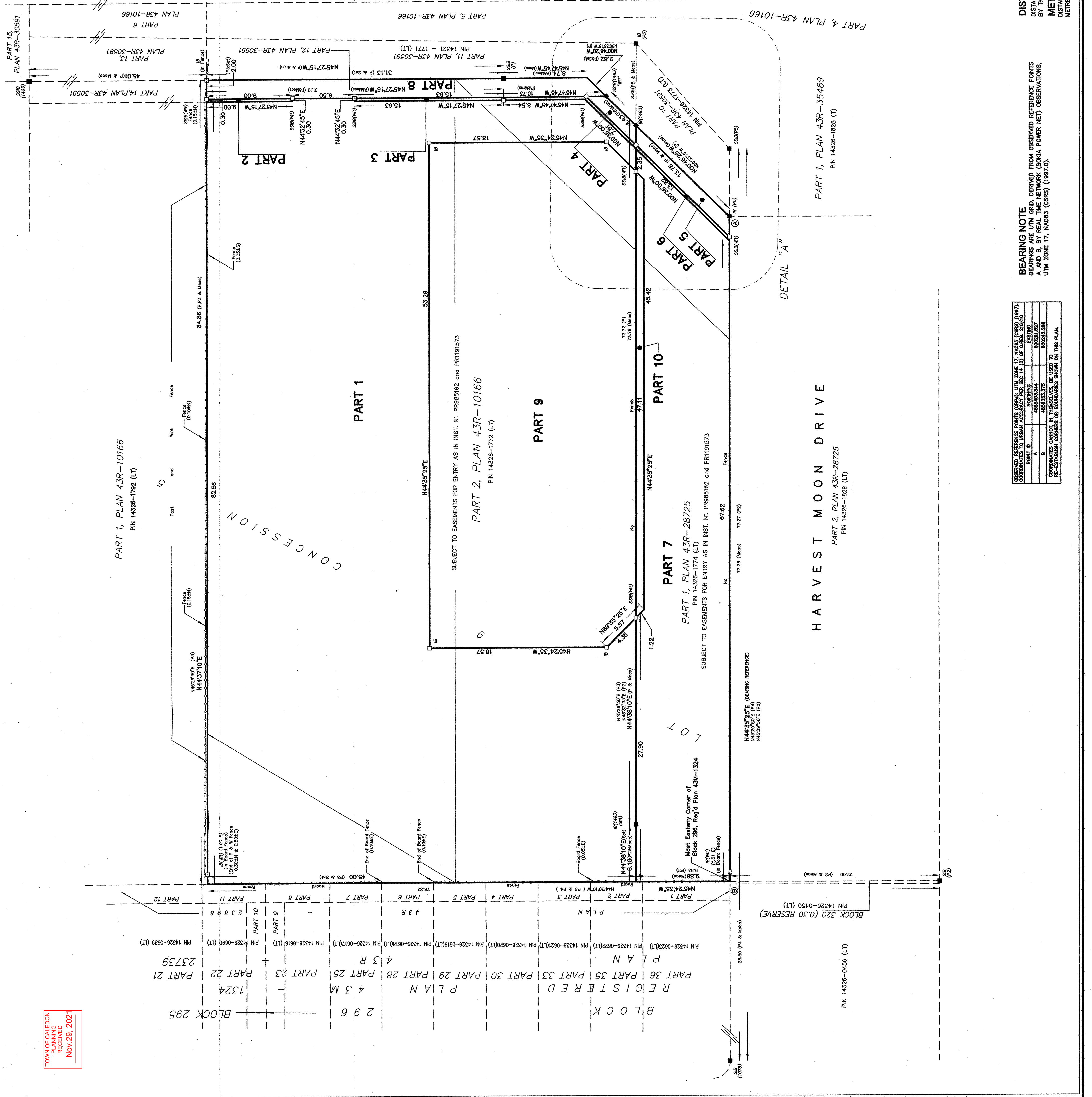
PLAN OF SURVEY OF  
**PART OF LOT 9  
 CONCESSION 5**  
 (FORMERLY TOWNSHIP OF ALBION)  
 TOWN OF CALEDON  
 REGIONAL MUNICIPALITY OF PEEL  
 1:200  
 1 2 3 4 5 6 7 8 9 10 METRES  
 YOUNG & YOUNG SURVEYING INC.  
 ONTARIO LAND SURVEYORS



**LEGEND**  
 ■ DENOTES FOUND MONUMENT  
 □ DENOTES PLANTED MONUMENT  
 ○ DENOTES IRON BAR  
 ○ DENOTES MEASURED IRON BAR  
 SSIB DENOTES SHORT STANDARD IRON BAR  
 Meas. DENOTES MEASURED  
 OU DENOTES ORIGIN UNKNOWN  
 P DENOTES PLAN 43R-30591  
 P2 DENOTES PLAN 43R-28725  
 P3 DENOTES PLAN 43R-10166  
 P4 DENOTES PLAN 43R-23739

**SURVEYOR'S CERTIFICATE**  
 I CERTIFY THAT:  
 1) THIS SURVEY AND PLAN ARE CORRECT AND IN ACCORDANCE WITH THE REGULATIONS MADE UNDER THE LAND TITLES ACT AND THE REGULATIONS MADE UNDER THEM.  
 2) THE SURVEY WAS COMPLETED ON THE 27th DAY OF MAY 2021.  
 JOHN F.G. YOUNG B.Sc., O.L.S.  
 ONTARIO LAND SURVEYOR  
 DATE 2021/11/16

**YOUNG & YOUNG SURVEYING INC.**  
 PROFESSIONAL LAND SURVEYORS  
 2 HOLLAND DRIVE UNIT 6  
 BURLINGTON ONTARIO L7R 1R1  
 P-MAIL: youngsurveying@bellnet.ca  
 EXAMINED BY CALC. BY D.H.S.  
 J.F.G.Y. B.Sc., O.L.S. DRAWN BY E.S.  
**PROJECT 13-B6595-R**



TOWN OF CALEDON  
 PLANNING  
 RECEIVED  
 NOV 29, 2021

**BEARING NOTE**  
 BEARINGS ARE UTM GRID, DERIVED FROM OBSERVED REFERENCE POINTS A AND B, BY REAL TIME NETWORK (SOMIA POWER NET) OBSERVATIONS, UTM ZONE 17, NAD83 (CSRS) (1997.0).

**DISTANCE NOTE**  
 DISTANCES ARE GROUND AND CAN BE CONVERTED TO GRID BY MULTIPLYING BY THE COMBINED SCALE FACTOR OF 0.9998942  
**METRIC**  
 DISTANCES AND COORDINATES SHOWN ON THIS PLAN ARE IN METRES AND CAN BE CONVERTED TO FEET BY DIVIDING BY 0.3048.

POINT ID	COORDINATES (Easting, Northing)
A	488003.34, 605018.87
B	488003.37, 605022.208

OBSERVED REFERENCE POINTS (O.R.P.) UTM ZONE 17, NAD83 (CSRS) (1997.0) COORDINATES TO UTM ACCURACY PER SEC 14 (C) OF OREG. 210/10  
 COORDINATES CANNOT, IN THEMSELVES, BE USED TO RE-ESTABLISH CORNERS OR BOUNDARIES SHOWN ON THIS PLAN.