

ARBORIST REPORT

Location:	13291 Airport Road, Caledon
Project:	Truck Trailer Parking
Project No:	GPI037
Prepared by:	Ning Huang, OALA CSLA ISA Certified Arborist (ON-1381A) The MBTW Group T: (416) 449-7767 Email: ning@mbtw.com 255 Wicksteed Avenue, Unit 1A Toronto, Ontario, M4H 1G8
Date Issued:	April 07, 2025

MBTW has been retained to prepare an Arborist Report for a proposed truck trailer parking located at 13291 Airport Road in the Town of Caledon. The purpose of this report is to assess the existing tree population on-site and adjacent areas, evaluate potential impacts from the proposed development, and provide recommendations for tree preservation, removal, and compensation in accordance with the Town of Caledon's guidelines.

This report is to be read in conjunction with:

- Appendix I : Tree Photos
- Appendix II: Tree Inventory and Preservation Chart
- Appendix III: Tree Inventory and Preservation Plan & Details

NATURE OF WORK

This Arborist Report provides information regarding the species, health and potential for development and tree preservation as per acceptable arboricultural procedures as recommended in the 'Guide for Plant Appraisal' prepared under contract by the "Council of Tree and Landscape Appraisers (CTLA), an official publication of the International Society of Arboriculture (I.S.A.), 9th edition, 2000". Trees were described in terms of species and diameter utilizing a sliding caliper measurer and caliper tape at the base of each tree. A rating of Good, Fair or Poor was assigned to each tree based on health, structural integrity, species response and the age of the tree in comparison with species longevity. Trees that were below 10cm in dbh were not identified in the Arborist Report. Trees that were above 10cm in dbh were measured and tagged and their tree species, size and condition recorded in the Tree Inventory and Preservation Chart attached in Appendix II of the report. Clump form trees were treated as a (1) single tree and were referenced according to their largest diameter trunk. The clump form trees were noted as a single tree unit due to their shared root system.

OVERVIEW OF FIELD WORK AND MAPPING PROCEDURES:

Base information for this report has been obtained from a site survey (digital mapping indicating existing topography and vegetation within the immediate area and surrounding site) and reconnaissance field investigation.

DETAILED TREE INVENTORY

The subject site is bordered by Airport Road to the west and existing agricultural fields and rural residential lands surrounding the site. The current site consists of a house, farm structure and agricultural fields. Additionally, a watercourse runs northeast to southwest through the property.

The arborist inspection was conducted on Feb 6 and 10, 2025. This site inspection was conducted to obtain information on the existing trees on site and adjacent to the subject property. The trees on site were tagged and measured at 1.4m from grade to obtain the trunk diameter at breast height (dbh) with a tape caliper measurer. The regulated trees were tagged with an identification number, identified as to their species and ranked as being good, fair, poor, terminal decline or hazardous in reference to their health and structural condition. Refer to Appendix III Tree Inventory and Preservation Plan for the locations of all inventoried trees. Photographs from the site review can be found in Appendix I, while the Tree Inventory and Preservation Table in Appendix II.

KEY FINDINGS

- Trees identified include Norway Maple (*Acer platanoides*), Colorado Spruce (*Picea pungens*), White Spruce (*Picea glauca*), Silver Maple (*Acer saccharinum*), Poplar (*Populus* sp.), and Willow (*Salix* sp.).
- Several trees exhibit signs of stress, such as trunk injuries, yellowing needles, and poor structure.
- Based on the assessment, **42** trees are recommended for removal, while the remainder can be preserved with appropriate mitigation measures.
- Existing vegetation within the Open Space Block was not included in the inventory as we do not anticipate any in-stream works.

RECOMMENDATIONS

The proposed construction will impact a portion of regulated trees. Trees recommended for removal include:

- Norway Maple (Tag #16, 17, 403, 404, 416-417)
- Colorado Spruce (Tag # 101-115, 174, 176, 432-433)
- Willow (Tag #175, 409, 410)
- Linden (Tag #405, 408)
- Austrian Pine (Tag #198-200, 406-407)
- Red Maple (Tag #415, 418)
- Manitoba Maple (Tag #163, 168)
- Hawthorn (Tag #164, 166, 169)

Preservation measures will be implemented for trees not recommended for removal. Protection strategies include:

- Tree Protection Zones (TPZ) with appropriate barriers
- Minimizing soil compaction and grading changes
- Periodic arborist re-assessments

According to the Town of Caledon's Tree Removal Compensation policies, a total of nighty-six (96) trees must be planted to compensate for the trees lost during the development process.

DISCLAIMER

Notwithstanding the recommendations identified in this arborist report, it must be noted the trees are living organisms and their health and vigor change over time in response to weather conditions, biotic and abiotic factors. With reasonable efforts to reduce the impacts of footing excavation to the affected trees, the trees identified in this report can be preserved and protected if the tree preservation recommendations are followed. Please refer to TP drawing for the standard detail for Tree Protection.

While efforts have been made to review the existing conditions of the trees on site, it is impossible to predict with absolute certainty the health and condition of trees under all circumstances. Inevitably a tree may pose some level of risk under adverse weather conditions and the associated risks can only be eliminated if the tree is removed.

The impacted trees identified in this report are recommended to be re-assessed periodically. The information presented in this report represents valid information obtained during the time of inspection.

We trust that this Arborist Report satisfies the Town of Caledon's requirements for a Tree inventory and Assessment Report for this development. Should you have any questions during the review of the report, please do not hesitate to contact me.

REPORT PREPARED BY:



APRIL 07, 2025

Ning Huang, ISA Certified Arborist # ON-1381A
THE MBTW GROUP

APPENDIX 1

ZONE 1 ALONG THE ENTRY ROAD



Tree with Tag # 16



Tree with Tag # 23-22-21-20



Tree with Tag # 19



Tree with Tag # From 101 to 107



Tree with Tag # 19-18-17-16



Tree with Tag # 27-26-25-24-23



Tree with Tag # 43-41-40-44-45-423-47-48-49



Tree with Tag # 50-49-48-47



Tree with Tag # 105-106-27-26-25-24



Tree with Tag # 403



Tree with Tag # 421



Tree with Tag # 420,446

ZONE 2 FRONTYARD



Tree with Tag #174



Tree with Tag #175



Tree with Tag #175-176-177-178-179



Tree with Tag #176



Tree with Tag # 177



Tree with Tag # 178



Tree with Tag # 179



Tree with Tag # 179-156



Tree with Tag # 181



Tree with Tag # 182



Tree with Tag # 184



Tree with Tag # 185



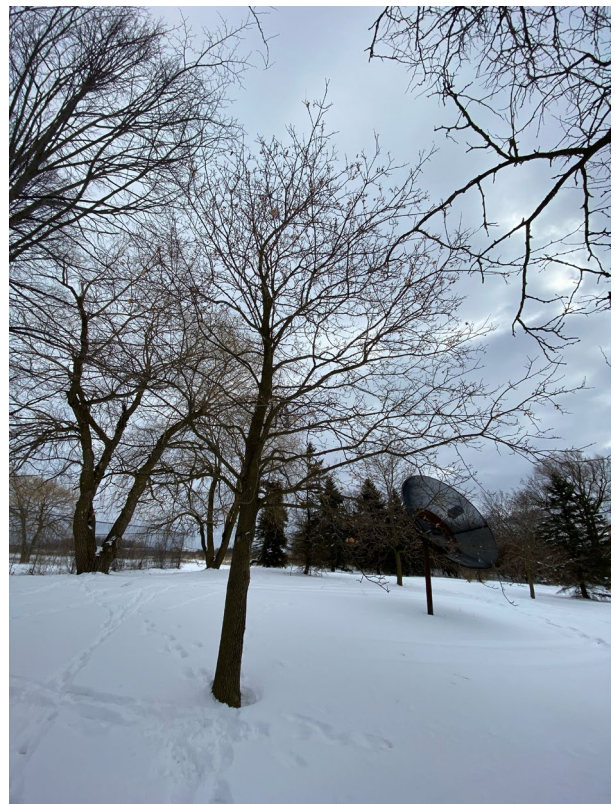
Tree with Tag #186



Tree with Tag #187



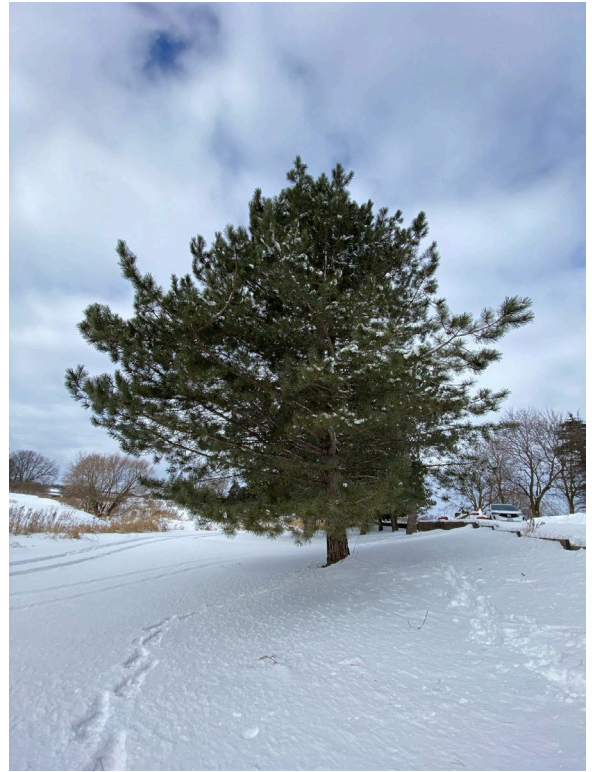
Tree with Tag #409



Tree with Tag #410



Tree with Tag # 190



Tree with Tag # 192



Tree with Tag # 194-193



Tree with Tag # 195



Tree with Tag # 196



Tree with Tag # 197



Tree with Tag # 200



Tree with Tag # 246

ZONE 3 BACKYARD



Tree with Tag #411



Tree with Tag #404



Tree with Tag #405



Tree with Tag #406



Tree with Tag #407



Tree with Tag #408



Tree with Tag #409



Tree with Tag #410



Tree with Tag #414-413-412-411



Tree with Tag # 418-417-416-415



Tree with Tag # 415



Tree with Tag # 417



Tree with Tag # 432



Tree with Tag # 444-445

ZONE 4 ALONG FENCEROW



Tree with Tag # 156



Tree with Tag # 157



Tree with Tag # 158



Tree with Tag # 160



Tree with Tag # 161



Tree with Tag # 162



Tree with Tag # 163



Tree with Tag # 164



Tree with Tag # 165



Tree with Tag # 166



Tree with Tag # 167



Tree with Tag # 168



Tree with Tag # 169



Tree with Tag # 170-171-172

Appendix II : Tree Inventory and Preservation Chart

Location: 13291 Airport Road, Caledon

Date of Field Work: 2025-02-06, 02-10

Revised: 2025-04-07

Chart Details

Tag#: Inventoried trees are assigned an identification tag number.

Species: Botanical name and common name of inventoried trees.

DBH: Diameter at Breast Height. A measurement of a tree caliper in cm at 1.4 meters above the existing grade.

Condition: Overall condition rating from good to fair to poor based on health and structure of a tree.

Recommendation: A declaration of future action, either preserve, preserve with injury, remove or transplant.

Ownership: 1. Private, 2.Neighbour, 3.Town or 4.Shared

Canopy Spread: Average diameter spread of drip line in metres.

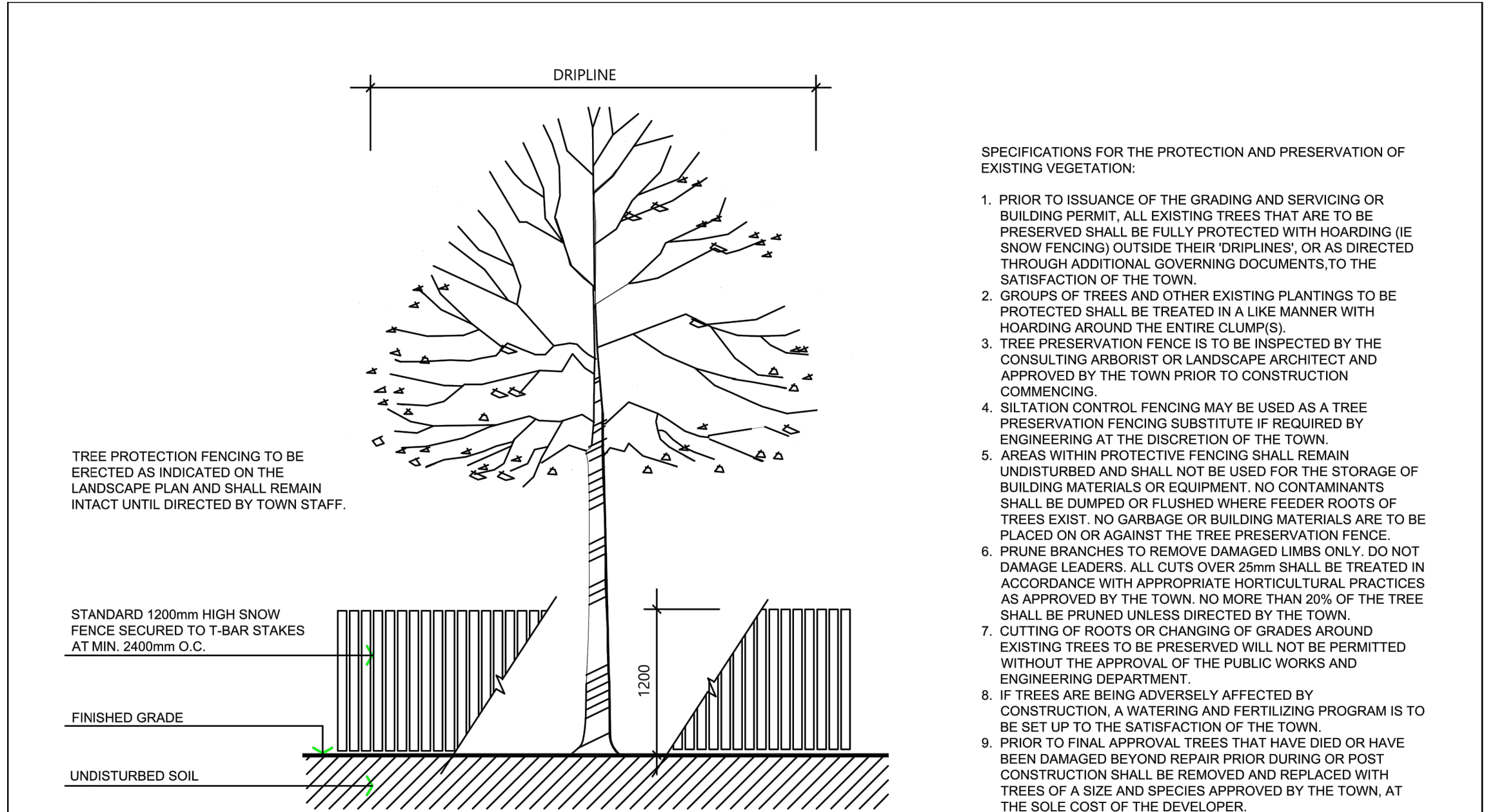
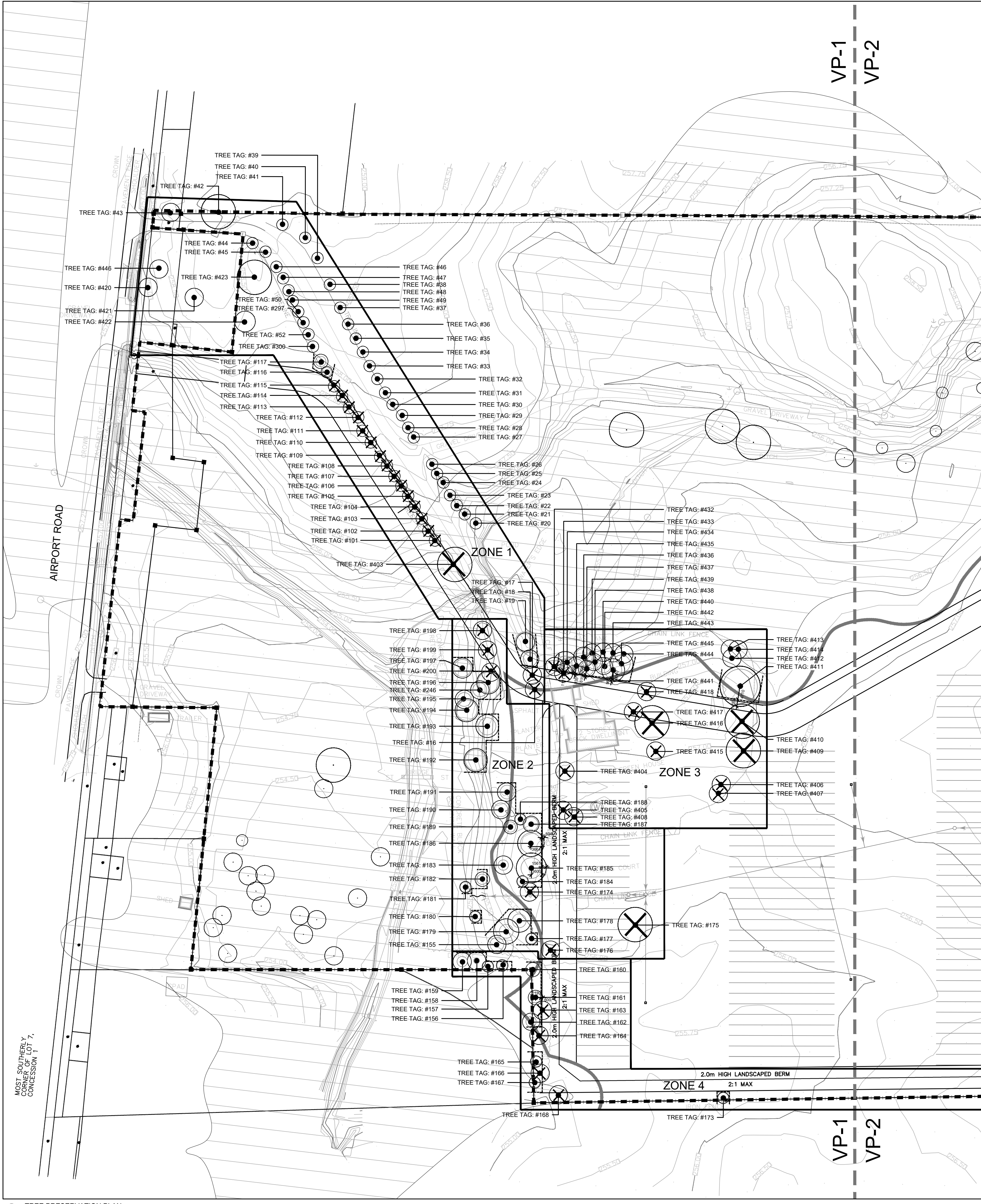
TPZ: Tree Protection Zone with a minimum required distance in metre from the outside edge of the tree base to tree protection barriers.

ZONE 1 ALONG THE ENTRY ROAD									
TAG #	SPECIES	DBH	Canopy	TPZ	COND.	OWN.	Remarks	Recommendation	compensation
16	<i>Acer platanoides</i> (Norway Maple)	29	7	1.8	Fair	1	A vertical scar on the lower trunk. In conflict with the proposed development	Remove	2
17	<i>Acer platanoides</i> (Norway Maple)	49	12	3.0	Good	1	In conflict with proposed construction	Remove	3
18	<i>Acer platanoides</i> (Norway Maple)	34	8	2.4	Good	1		Preserve	
19	<i>Acer platanoides</i> (Norway Maple)	58	15	3.6	Poor	1	Truck injured.	Preserve	
20	<i>Picea pungens</i> (Colorado Spruce)	35	8	2.4	Poor	1	many yellowing needles.	Preserve	
21	<i>Picea pungens</i> (Colorado Spruce)	28	7	1.8	Good	1		Preserve	
22	<i>Picea pungens</i> (Colorado Spruce)	29	7	1.8	Fair	1		Preserve	
23	<i>Picea pungens</i> (Colorado Spruce)	19	5	1.8	Good	1		Preserve	
24	<i>Picea pungens</i> (Colorado Spruce)	30	9	2.4	Poor	1	many yellowing needles.	Preserve	
25	<i>Picea pungens</i> (Colorado Spruce)	45	12	3.0	Good	1		Preserve	
26	<i>Picea pungens</i> (Colorado Spruce)	35	9	2.4	Fair	1	yellowing needles	Preserve	
27	<i>Picea pungens</i> (Colorado Spruce)	45	12	3.0	Good	1		Preserve	
28	<i>Picea pungens</i> (Colorado Spruce)	32	9	2.4	Good	1		Preserve	
29	<i>Picea pungens</i> (Colorado Spruce)	41	11	3.0	Good	1		Preserve	
30	<i>Picea pungens</i> (Colorado Spruce)	31	8	2.4	Good	1		Preserve	
31	<i>Picea pungens</i> (Colorado Spruce)	32	8	2.4	Good	1		Preserve	
32	<i>Picea pungens</i> (Colorado Spruce)	30	7	2.4	Good	1		Preserve	
33	<i>Picea pungens</i> (Colorado Spruce)	42	10	3.0	Good	1		Preserve	
34	<i>Picea pungens</i> (Colorado Spruce)	38	9	2.4	Good	1		Preserve	
35	<i>Picea pungens</i> (Colorado Spruce)	32	8	2.4	Good	1		Preserve	
36	<i>Picea pungens</i> (Colorado Spruce)	28	6	1.8	Fair	1	yellowing needles	Preserve	
37	<i>Picea pungens</i> (Colorado Spruce)	45	11	3.0	Good	1		Preserve	
38	<i>Picea pungens</i> (Colorado Spruce)	28	6	1.8	Good	1		Preserve	
39	<i>Picea pungens</i> (Colorado Spruce)	29	6	1.8	Good	1		Preserve	
40	<i>Picea pungens</i> (Colorado Spruce)	25	5	1.8	Good	1		Preserve	
41	<i>Picea pungens</i> (Colorado Spruce)	40	10	2.4	Good	1		Preserve	
42	<i>Salix</i> sp. (Willow species)	140	18	8.4	Good	1		Preserve	
43	<i>Picea pungens</i> (Colorado Spruce)	15	3	1.8	Good	1		Preserve	
44	<i>Picea pungens</i> (Colorado Spruce)	20	3	1.8	Poor	1		Preserve	
45	<i>Picea pungens</i> (Colorado Spruce)	31	6	2.4	Fair	1	yellowing needles	Preserve	
46	<i>Picea pungens</i> (Colorado Spruce)	21	4	1.8	Fair	1	yellowing needles	Preserve	
47	<i>Picea pungens</i> (Colorado Spruce)	31	6	2.4	Fair	1	yellowing needles	Preserve	
48	<i>Picea pungens</i> (Colorado Spruce)	35	7	2.4	Good	1		Preserve	
49	<i>Picea pungens</i> (Colorado Spruce)	35	7	2.4	Good	1		Preserve	
50	<i>Picea pungens</i> (Colorado Spruce)	38	8	2.4	Good	1		Preserve	
297	<i>Picea pungens</i> (Colorado Spruce)	30	6	2.4	Fair	1	yellowing needles	Preserve	
52	<i>Picea pungens</i> (Colorado Spruce)	36	7	2.4	Good	1		Preserve	
300	<i>Picea pungens</i> (Colorado Spruce)	25	4	1.8	Fair	1	yellowing needles	Preserve	
101	<i>Picea pungens</i> (Colorado Spruce)	18	3	1.8	Good	1	In conflict with proposed construction	Remove	1
102	<i>Picea pungens</i> (Colorado Spruce)	25	5	1.8	Good	1	In conflict with proposed construction	Remove	2
103	<i>Picea pungens</i> (Colorado Spruce)	13	2	1.8	Fair	1	yellowing needles. In conflict with proposed construction	Remove	1
104	<i>Picea pungens</i> (Colorado Spruce)	24	4	1.8	Fair	1	yellowing needles. In conflict with proposed construction	Remove	2
105	<i>Picea pungens</i> (Colorado Spruce)	14	2	1.8	Fair	1	yellowing needles. In conflict with proposed construction	Remove	1
106	<i>Picea pungens</i> (Colorado Spruce)	19/20	4	1.8	Fair	1	yellowing needles. In conflict with proposed construction	Remove	1

TAG #	SPECIES	DBH	Canopy	TPZ	COND.	OWN.	Remarks	Recommendation	compensation
107	<i>Picea pungens</i> (Colorado Spruce)	30	6	2.4	Fair	1	yellowing needles. In conflict with proposed construction	Remove	2
108	<i>Picea pungens</i> (Colorado Spruce)	19	4	1.8	Fair	1	yellowing needles. In conflict with proposed construction	Remove	1
109	<i>Picea pungens</i> (Colorado Spruce)	28	5	1.8	Fair	1	yellowing needles. In conflict with proposed construction	Remove	2
110	<i>Picea pungens</i> (Colorado Spruce)	29	5	1.8	Fair	1	yellowing needles. In conflict with proposed construction	Remove	2
111	<i>Picea pungens</i> (Colorado Spruce)	30	6	2.4	Fair	1	yellowing needles. In conflict with proposed construction	Remove	2
112	<i>Picea pungens</i> (Colorado Spruce)	30	6	2.4	Fair	1	yellowing needles. In conflict with proposed construction	Remove	2
113	<i>Picea pungens</i> (Colorado Spruce)	31	6	2.4	Fair	1	yellowing needles. In conflict with proposed construction	Remove	2
114	<i>Picea pungens</i> (Colorado Spruce)	22	4	1.8	Fair	1	yellowing needles. In conflict with proposed construction	Remove	2
115	<i>Picea pungens</i> (Colorado Spruce)	23	4	1.8	Good	1	In conflict with proposed construction	Remove	2
116	<i>Picea pungens</i> (Colorado Spruce)	25	4	1.8	Fair	1	yellowing needles.	Preserve	
117	<i>Picea pungens</i> (Colorado Spruce)	28	5	1.8	Fair	1	yellowing needles	Preserve	
403	<i>Acer platanoides</i> (Norway Maple)	47	12	3.0	Fair	1	In conflict with proposed construction	Remove	3
420	<i>Acer platanoides</i> (Norway Maple)	49	13	3.0	Good	2		Preserve	
421	<i>Picea glauca</i> (White Spruce)	41	5	3.0	Good	2		Preserve	
422	<i>Populus</i> sp. (Poplar species)	150	13	9.0	Good	2		Preserve	
423	<i>Acer saccharinum</i> (Silver Maple)	30,20,20,25,10	NA	2.4	Good	2	Multistem	Preserve	
446	<i>Acer platanoides</i> (Norway Maple)	31	7	2.4	Good	2		Preserve	
ZONE 2 FRONTYARD									
155	<i>Picea pungens</i> (Colorado Spruce)	38	7	2.4	Good	1		Preserve	
174	<i>Picea pungens</i> (Colorado Spruce)	20	4	1.8	Good	1		Remove	1
175	<i>Salix</i> sp. (Willow species)	40/40/50/60	NA	3.6	Good	1	Multistem. In conflict with proposed construction	Remove	4
176	<i>Picea pungens</i> (Colorado Spruce)	20	3	1.8	Fair	1	In conflict with proposed construction	Remove	1
177	<i>Picea pungens</i> (Colorado Spruce)	25	4	1.8	Fair	1		Preserve	
178	<i>Picea pungens</i> (Colorado Spruce)	38	8	2.4	Good	1		Preserve	
179	<i>Picea pungens</i> (Colorado Spruce)	39	9	2.4	Fair	1		Preserve	
180	<i>Picea pungens</i> (Colorado Spruce)	11	2	1.8	Fair	1		Preserve	
181	<i>Picea pungens</i> (Colorado Spruce)	22	4	1.8	Fair	1		Preserve	
182	<i>Acer platanoides</i> (Norway Maple)	19	5	1.8	Good	1		Preserve	
183	<i>Acer platanoides</i> (Norway Maple)	28	4	1.8	Good	1		Preserve	
184	<i>Picea pungens</i> (Colorado Spruce)	20	2	1.8	Poor	1		Preserve	
185	<i>Salix</i> sp. (Willow species)	60	10	3.6	Fair	1	Preserve with injury.	Preserve	
186	<i>Salix</i> sp. (Willow species)	55	9	3.6	Fair	1		Preserve	
187	<i>Tilia</i> sp. (Linden species)	36	5	2.4	Fair	1		Preserve	
188	<i>Tilia</i> sp. (Linden species)	29	4	1.8	Fair	1		Preserve	
189	<i>Acer platanoides</i> (Norway Maple)	21	5	1.8	Good	1		Preserve	
190	<i>Gleditsia triacanthos</i> (Honey Locust)	40	8	2.4	Good	1		Preserve	
191	<i>Acer saccharum</i> (Sugar Maple)	36	7	2.4	Good	1		Preserve	
192	<i>Pinus nigra</i> (Austrian Pine)	59	8	3.6	Good	1		Preserve	
193	<i>Pinus nigra</i> (Austrian Pine)	50	8	3.0	Good	1		Preserve	
194	<i>Pinus nigra</i> (Austrian Pine)	55	8	3.6	Fair	1		Preserve	
195	<i>Pinus nigra</i> (Austrian Pine)	38	6	2.4	Fair	1		Preserve	
196	<i>Pinus nigra</i> (Austrian Pine)	51	7	3.6	Good	1		Preserve	
197	<i>Pinus nigra</i> (Austrian Pine)	50	7	3.0	Good	1		Preserve	
198	<i>Pinus nigra</i> (Austrian Pine)	60	8	3.6	Poor	1	In conflict with proposed construction	Remove	4
199	<i>Pinus nigra</i> (Austrian Pine)	55	8	3.6	Fair	1	In conflict with proposed construction	Remove	4
200	<i>Pinus nigra</i> (Austrian Pine)	42	6	3.0	Fair	1	In conflict with proposed construction	Remove	3
246	<i>Pinus nigra</i> (Austrian Pine)	37	6	2.4	Good	1		Preserve	
ZONE 3 BACKYARD									
404	<i>Acer platanoides</i> (Norway Maple)	22	4	1.8	Good	1	In conflict with proposed construction	Remove	2
405	<i>Tilia</i> sp. (Linden species)	53	8	3.6	Good	1	In conflict with proposed construction	Remove	4
406	<i>Pinus nigra</i> (Austrian Pine)	30	4	2.4	Fair	1	In conflict with proposed construction	Remove	2
407	<i>Pinus nigra</i> (Austrian Pine)	18	2	1.8	Fair	1	In conflict with proposed construction	Remove	1

TAG #	SPECIES	DBH	Canopy	TPZ	COND.	OWN.	Remarks	Recommendation	compensation
408	<i>Tilia</i> sp. (Linden species)	59	9	3.6	Good	1	In conflict with proposed construction	Remove	4
409	<i>Salix</i> sp. (<i>Willow species</i>)	65	10	4.2	Poor	1	Dead branches. In conflict with proposed construction	Remove	4
410	<i>Salix</i> sp. (<i>Willow species</i>)	99	15	6.0	Fair	1	In conflict with proposed construction	Remove	5
411	<i>Salix</i> sp. (<i>Willow species</i>)	92	14	6.0	Fair	1	Preserve with injury.	Preserve	
412	<i>Pinus nigra</i> (Austian Pine)	30	4	2.4	Good	1		Preserve	
413	<i>Pinus nigra</i> (Austian Pine)	30	4	2.4	Good	1		Preserve	
414	<i>Pinus nigra</i> (Austian Pine)	28	4	1.8	Good	1		Preserve	
415	<i>Acer rubrum</i> (Red Maple)	39	6	2.4	Good	1	In conflict with proposed construction	Remove	3
416	<i>Acer platanoides</i> (Norway Maple)	50	8	3.0	Good	1	In conflict with proposed construction	Remove	3
417	<i>Acer platanoides</i> (Norway Maple)	38	7	2.4	Good	1	In conflict with proposed construction	Remove	3
418	<i>Acer rubrum</i> (Red Maple)	45	9	3.0	Good	1	In conflict with proposed construction	Remove	3
432	<i>Picea pungens</i> (<i>Colorado Spruce</i>)	48	9	3.0	Good	1	In conflict with proposed construction	Remove	3
433	<i>Picea pungens</i> (<i>Colorado Spruce</i>)	35	6	2.4	Good	1	In conflict with proposed construction	Remove	2
434	<i>Picea pungens</i> (<i>Colorado Spruce</i>)	40	8	2.4	Good	1	Preserve with injury.	Preserve	
435	<i>Picea pungens</i> (<i>Colorado Spruce</i>)	34	6	2.4	Good	1	Preserve with injury.	Preserve	
436	<i>Picea pungens</i> (<i>Colorado Spruce</i>)	41	7	3.0	Good	1		Preserve	
437	<i>Picea pungens</i> (<i>Colorado Spruce</i>)	34	6	2.4	Good	1	Preserve with injury.	Preserve	
438	<i>Picea pungens</i> (<i>Colorado Spruce</i>)	35	6	2.4	Good	1		Preserve	
439	<i>Picea pungens</i> (<i>Colorado Spruce</i>)	20	4	1.8	Good	1		Preserve	
440	<i>Picea pungens</i> (<i>Colorado Spruce</i>)	42	8	3.0	Good	1		Preserve	
441	<i>Picea pungens</i> (<i>Colorado Spruce</i>)	41	8	3.0	Good	1	Preserve with injury.	Preserve	
442	<i>Picea pungens</i> (<i>Colorado Spruce</i>)	37	6	2.4	Good	1		Preserve	
443	<i>Picea pungens</i> (<i>Colorado Spruce</i>)	39	7	2.4	Good	1		Preserve	
444	<i>Picea pungens</i> (<i>Colorado Spruce</i>)	38	7	2.4	Good	1		Preserve	
445	<i>Picea pungens</i> (<i>Colorado Spruce</i>)	46	8	3.0	Good	1		Preserve	
	ZONE 4 ALONG FENCEROW								
156	<i>Crataegus</i> sp. (Hawthorn)	12/11/10	4	1.8	Poor	1	Multistem.	Preserve	
157	<i>Crataegus</i> sp. (Hawthorn)	11	4	1.8	Fair	1		Preserve	
158	<i>Crataegus</i> sp. (Hawthorn)	19	4	1.0	Poor	1		Preserve	
159	<i>Crataegus</i> sp. (Hawthorn)	18	4	1.8	Poor	1		Preserve	
160	<i>Crataegus</i> sp. (Hawthorn)	20/25/13/1 2/10	5	2.4	Fair	1	Multistem.	Preserve	
161	<i>Rhamnus cathartica</i> (Buckthorn)	15/15/13/1 2	5	1.8	Good	1	Multistem. Preserve with injury.	Preserve	
162	<i>Crataegus</i> sp. (Hawthorn)	10/13/11	3	1.8	Good	1		Preserve	
163	<i>Acer negundo</i> (Manitoba Maple)	22	4	1.8	Poor	1	In conflict with proposed construction	Remove	2
164	<i>Crataegus</i> sp. (Hawthorn)	20/16/18	4	2.4	Fair	1	Multistem. In conflict with proposed construction	Remove	1
165	<i>Crataegus</i> sp. (Hawthorn)	10/13/10	4	1.8	Good	1	Multistem.	Preserve	
166	<i>Crataegus</i> sp. (Hawthorn)	12/15/18/1 0	2	1.8	Good	1	Multistem. In conflict with proposed construction	Remove	1
167	<i>Crataegus</i> sp. (Hawthorn)	19	4	1.8	Fair	1		Preserve	
168	<i>Acer negundo</i> (Manitoba Maple)	20	4	1.8	Good	1	In conflict with proposed construction	Remove	1
169	<i>Malus</i> sp.(Apple species)	30/20/25/2 2/10	6	2.4	Good	1	Multistem. In conflict with proposed construction	Remove	2
170	<i>Ulmus americana</i> (American Elm)	12/11/10	2	1.8	Good	1	Multistem	Preserve	
171	<i>Ulmus americana</i> (American Elm)	20	3	1.8	Good	1		Preserve	
172	<i>Ulmus americana</i> (American Elm)	39	5	2.4	Good	1	Preserve with injury.	Preserve	
173	<i>Acer platanoides</i> (Norway Maple)	22	4	1.8	Good	1		Preserve	
							Total Compensation Trees		96

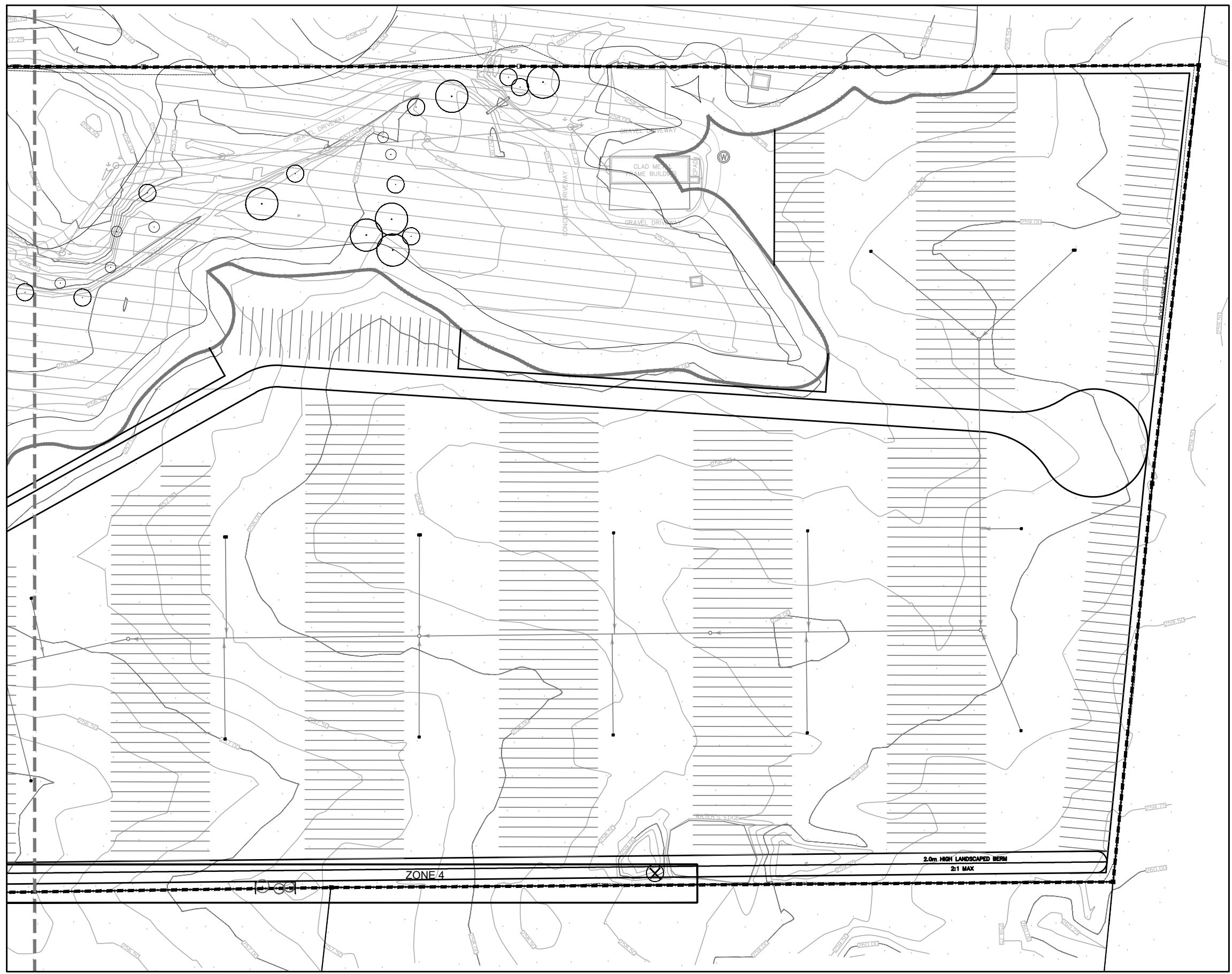
K:\Drawings\2025\04\07\037-13291_Airport_Rd_Landscaping\04-07-2025_37\07037-TP_Tree Protection Plan.dwg Apr. 07, 2025 -- 4:12pm



- SPECIFICATIONS FOR THE PROTECTION AND PRESERVATION OF EXISTING VEGETATION:
1. PRIOR TO ISSUANCE OF THE GRADING AND SERVICING OR BUILDING PERMIT, ALL EXISTING TREES THAT ARE TO BE PRESERVED SHALL BE FULLY PROTECTED WITH HOARDING (IE SNOW FENCING) OUTSIDE THEIR 'DRIPLINES', OR AS DIRECTED THROUGH ADDITIONAL GOVERNING DOCUMENTS, TO THE SATISFACTION OF THE TOWN.
 2. GROUPS OF TREES AND OTHER EXISTING PLANTINGS TO BE PROTECTED SHALL BE TREATED IN A LIKE MANNER WITH HOARDING AROUND THE ENTIRE CLUMPS.
 3. TREE PRESERVATION FENCE IS TO BE INSPECTED BY THE CONSULTING ARBORIST OR LANDSCAPE ARCHITECT AND APPROVED BY THE TOWN PRIOR TO CONSTRUCTION COMMENCING.
 4. SILTATION CONTROL FENCING MAY BE USED AS A TREE PRESERVATION FENCING SUBSTITUTE IF REQUIRED BY ENGINEERING AT THE DISCRETION OF THE TOWN.
 5. AREAS WITHIN PROTECTIVE FENCING SHALL REMAIN UNDISTURBED AND SHALL NOT BE USED FOR THE STORAGE OF BUILDING MATERIALS OR EQUIPMENT. NO CONTAMINANTS SHALL BE DUMPED OR FLUSHED WHERE FEEDER ROOTS OF TREES EXIST. NO GARBAGE OR BUILDING MATERIALS ARE TO BE PLACED ON OR AGAINST THE TREE PRESERVATION FENCE.
 6. PRUNE BRANCHES TO REMOVE DAMAGED LIMBS ONLY. DO NOT DAMAGE LEADERS. ALL CUTS OVER 25mm SHALL BE TREATED IN ACCORDANCE WITH APPROPRIATE HORTICULTURAL PRACTICES AS APPROVED BY THE TOWN. NO MORE THAN 20% OF THE TREE SHALL BE PRUNED UNLESS DIRECTED BY THE TOWN.
 7. CUTTING OF ROOTS OR CHANGING OF GRADES AROUND EXISTING TREES TO BE PRESERVED WILL NOT BE PERMITTED WITHOUT THE APPROVAL OF THE PUBLIC WORKS AND ENGINEERING DEPARTMENT.
 8. IF TREES ARE BEING ADVERSELY AFFECTED BY CONSTRUCTION, A WATERING AND FERTILIZING PROGRAM IS TO BE SET UP TO THE SATISFACTION OF THE TOWN.
 9. PRIOR TO FINAL APPROVAL, TREES THAT HAVE DIED OR HAVE BEEN DAMAGED BEYOND REPAIR PRIOR DURING OR POST CONSTRUCTION SHALL BE REMOVED AND REPLACED WITH TREES OF A SIZE AND SPECIES APPROVED BY THE TOWN, AT THE SOLE COST OF THE DEVELOPER.

TOWN OF CALEDON						APRD: C.C.	DATE: JUNE 08
TREE PRESERVATION	3	STANDARD 707 NOW 606		JAN 18		DRAWN: abal	SCALE: NTS
	2	STANDARD No. 1135 NOW 707, NOTES EDIT		JUNE 08			
	1	NOTE NO. 9 ADDED		MARCH 08			
	NO.	REVISION	APR'D	DATE	STANDARD No. 606		

3 TREE PRESERVATION FENCE DETAIL N.T.S.



2 TREE PRESERVATION PLAN 1:1500

Key Plan - N.T.S.



Legend

- PROPERTY LINE
- ARBORIST ZONE
- EXISTING TREE TO REMAIN
- EXISTING TREES TO BE REMOVED
- TREE PROTECTION FENCING
- TREE PROTECTION ZONE

BASE INFORMATION:

1: CONCEPT PLAN BY HUMPHRIES PLANNING GROUP INC., RECEIVED BY EMAIL OCTOBER 29, 2024, APRIL 02, 2025, APRIL 04, 2025, APRIL 07, 2025.

1.	Apr.07.25	Issued for First Submission	NH
No	Date	Revisions	By

This drawing, as an instrument of service, is provided by, and is the property of, the MBTW Group. The contractor shall check and verify all dimensions and report all errors and omissions to the Landscape Architect whose seal is affixed to this drawing before proceeding with the work. This drawing is not to be copied.

the mbtw group
255 Westland Ave., Unit 1A | Toronto, Ontario, Canada M6H 1G8
T: (416) 448-7767 | F: (416) 448-1883 | www.mbtw.com

Project Name:		PROPOSED DEVELOPMENT 13291 Airport Road	
Municipality:		Town of Caledon	
Sheet Title:		Tree Inventory and Preservation Plan	
Designed By / Drawn By:	Scale:	Drawing No.:	
NH / YH	As Shown	TP-1	
Date of Drawing:	Job No.:		
February 2025	GPI037		