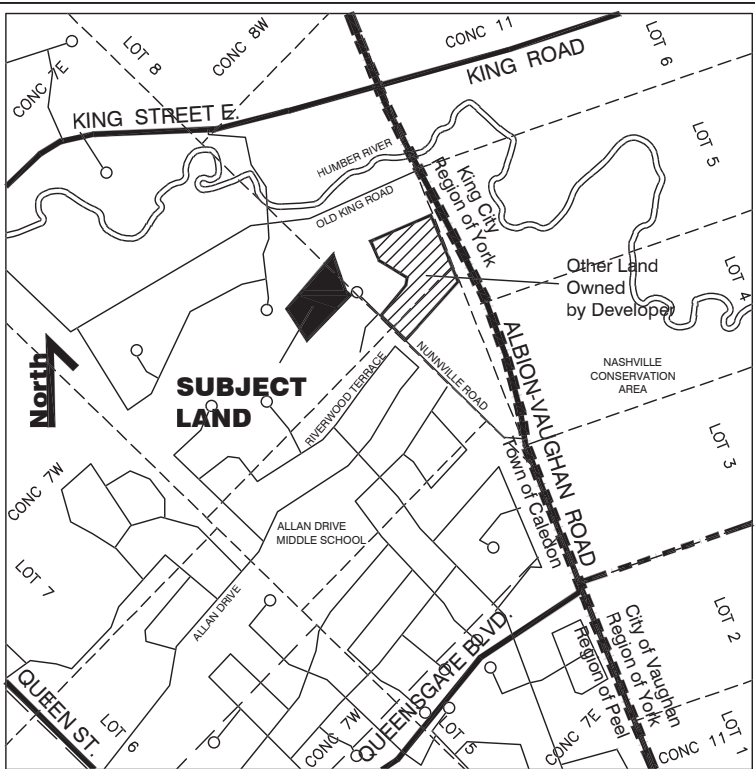


TOWN OF CALEDON
PLANNING
RECEIVED
Dec 22, 2023



KEY PLAN
N.T.S.

SITELIGHT ASSEMBLY
POLE: 8.2m (27') OCTAGONAL CONCRETE PRESTRESSED AND REINFORCED, BY STRESS-CRETE CAT.# E270-BPO-G-CSA C/W TOP CAP AND FINISHED IN POLISHED MIDNIGHT LACE CAT.# S-10.
ARM: 1.5m (5') DECORATIVE ARM WITH SCROLL
LUMINAIRE: KING K601 TYPE II 25W 3000K CAT# K601D-S-II-P4NL25-(SSL)-7030-120V C/W 7-PIN PHOTO CONTROL AND BACK SHIELD.
NOTE: LUMINAIRE AND ARM TO BE FACTORY FINISHED POWDER COAT BLACK.

AS ABOVE EXCEPT WITH ADDITIONAL SHIELD ON SIDE INDICATED BY *

METERED POWER SUPPLY PEDESTAL TO BE MANUFACTURED BY PEDESTAL SOLUTIONS INC. (PSI), YORK, ONTARIO. CAT.#SLxxx1-#-40, 100A 2 POLE MAIN BREAKER, #40A BRANCH BREAKERS, PROVISION FOR UP TO 12 BRANCH BREAKERS. WEATHER PROOF, TAMPER PROOF CABINET, DARK GREEN, PROVISIONS FOR PADLOCKING, MOUNT ON PRE-CAST CONCRETE FOUNDATION (USI UP2022 BASE)

PROPOSED GROUND ROD.

HYDRO ONE TRANSFORMER.

STREETLIGHT CABLE: 2-#6RWU C/W 1-#6 RWU GND. CABLE INSTALLED IN 50mm PVC TYPE 2 DIRECT BURIED DUCT IN COMPLETE ACCORDANCE WITH E.S.A. STANDARDS & SPECIFICATIONS

STREETLIGHT PEDESTAL SUPPLY CABLE BY HYDRO ONE.

MUNICIPAL NUMBER

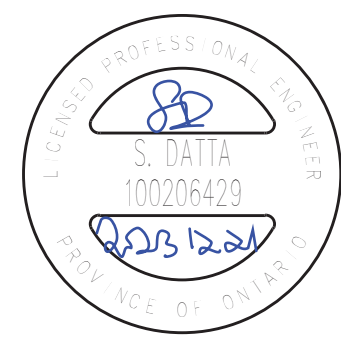
HYDRO ONE VAULT.

APPROVED FOR CONSTRUCTION
THIS APPROVAL CONSTITUTES A GENERAL REVIEW AND DOES NOT CERTIFY DIMENSIONAL ACCURACY.

THIS APPROVAL IS SUBJECT TO THE FURTHER CERTIFICATION OF THE "AS CONSTRUCTED" WORKS BY A REGISTERED PROFESSIONAL ENGINEER OF THE PROVINCE OF ONTARIO.

DATE: _____ APPROVED BY: _____

2	PER MUNICIPAL COMMENT, LATEST BASE	2023.12.21	
1	REVISED PER LATEST SITE PLAN	2023.03.20	
NO	REVISION	DATE	BY



RTG Systems Inc.
ELECTRICAL CONSULTING ENGINEERS
3518 Midway Dr., Suite 201
Burlington ON L7M 1A8
E-MAIL: general@rtgsystems.com
Office: (905) 335-4470
Toronto: (905) 827-7887

TOWN OF CALEDON
13290 NUNNVILLE ROAD ENCLAVE TOWNHOMES CONDO SITE LIGHTING

DWG BY S.D.	DATE 2022.04.07	CK'D BY	DATE
SCALE 1:500 EXCEPT SYMBOLS	DRAWING NO. SL-1	SHEET 1 OF 1	