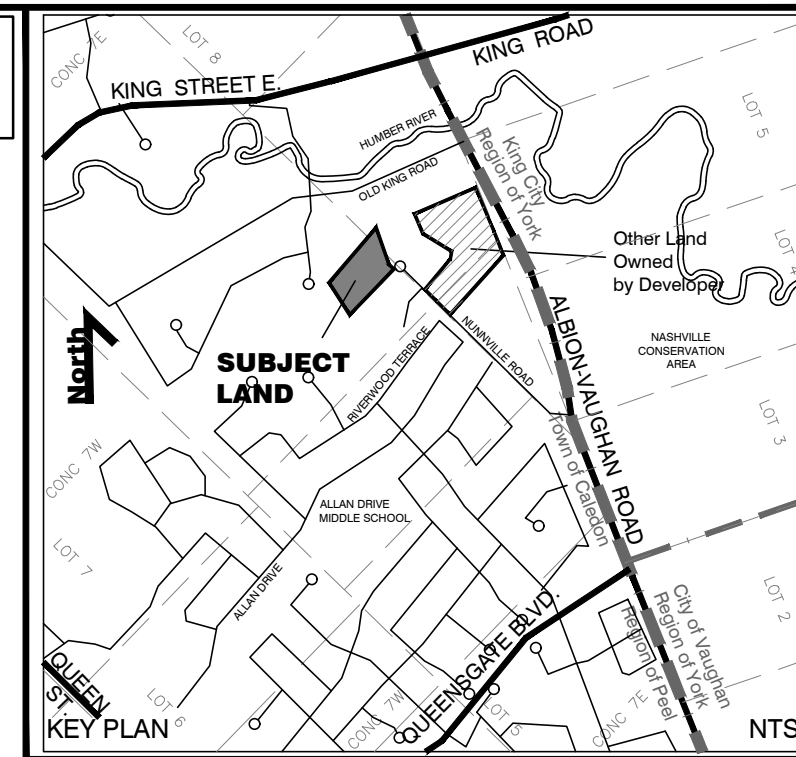
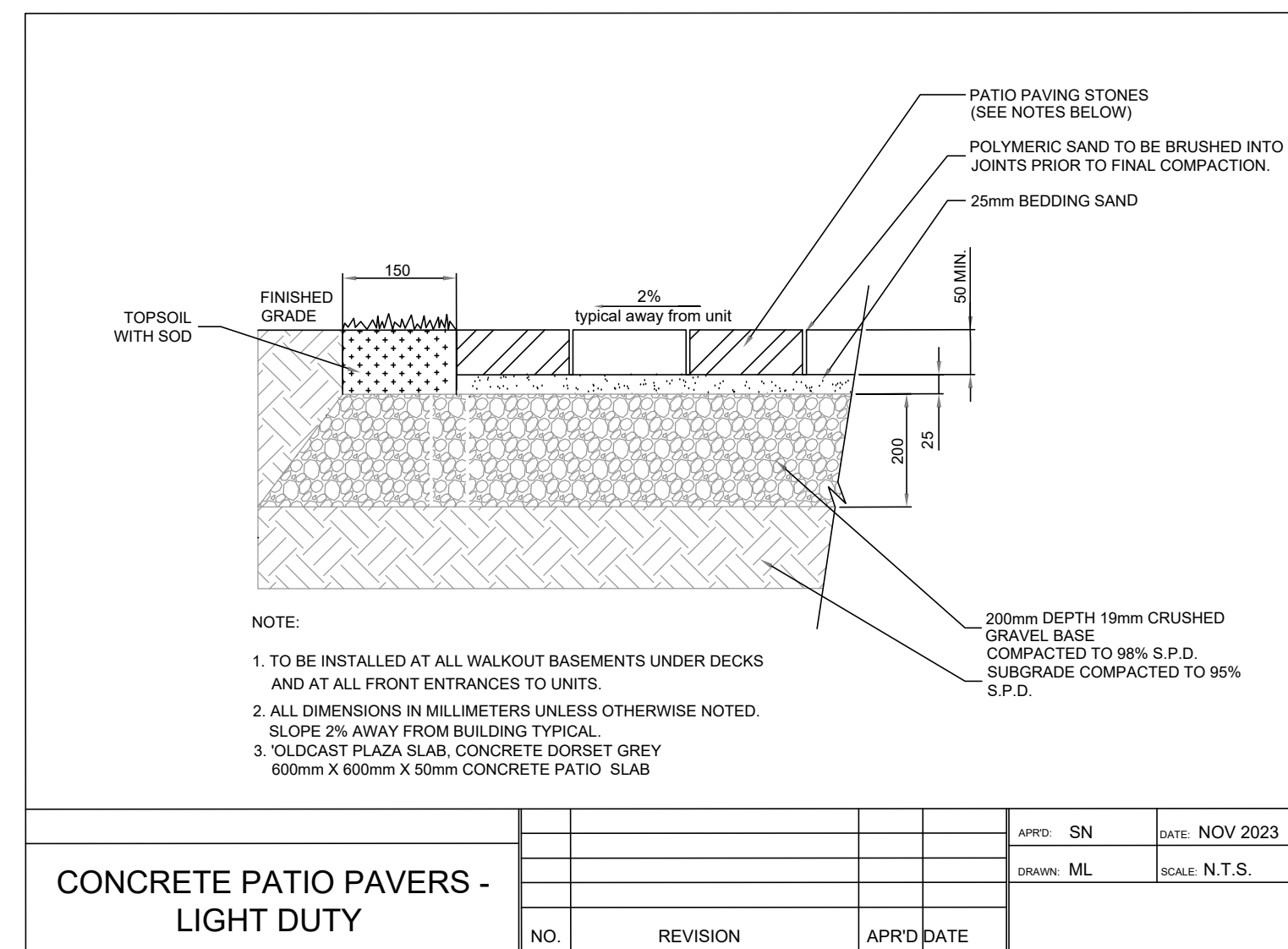
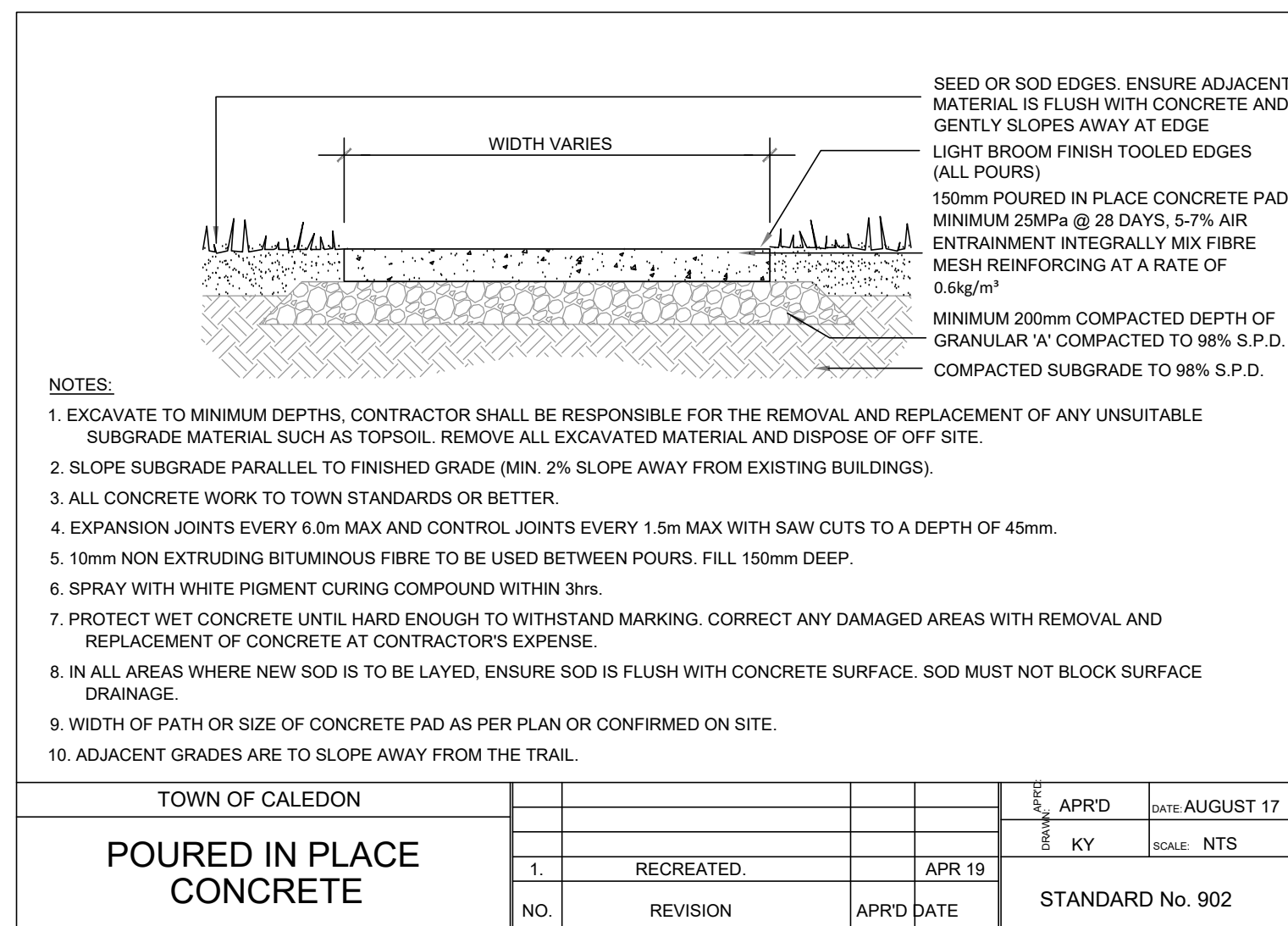


NOT FOR CONSTRUCTION
SPA ONLY



TOWN OF CALEDON
PLANNING
RECEIVED
Dec 22, 2023

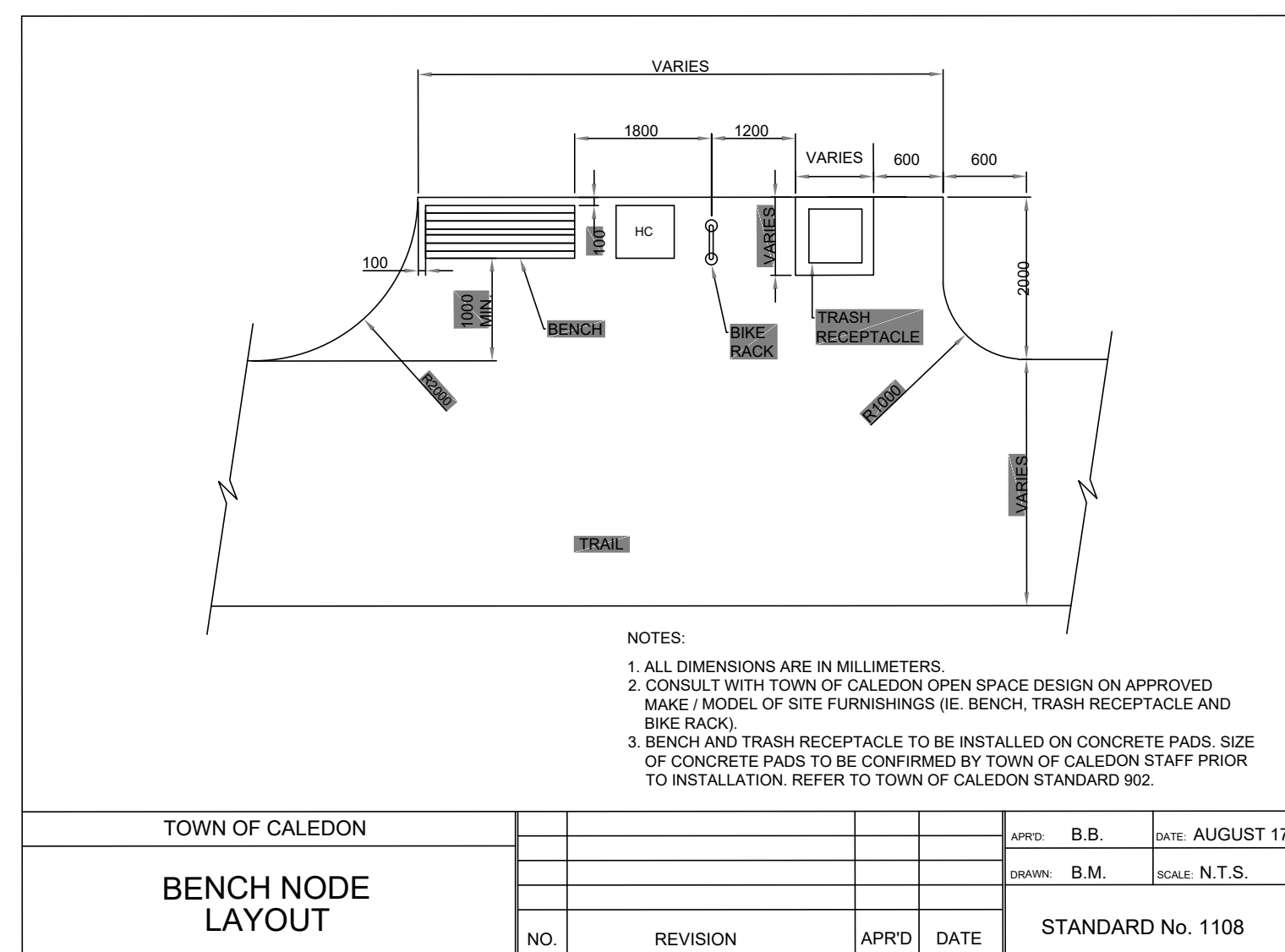


1 POURED IN PLACE CONCRETE PAVING DETAIL

L-6

SCALE: N.T.S.

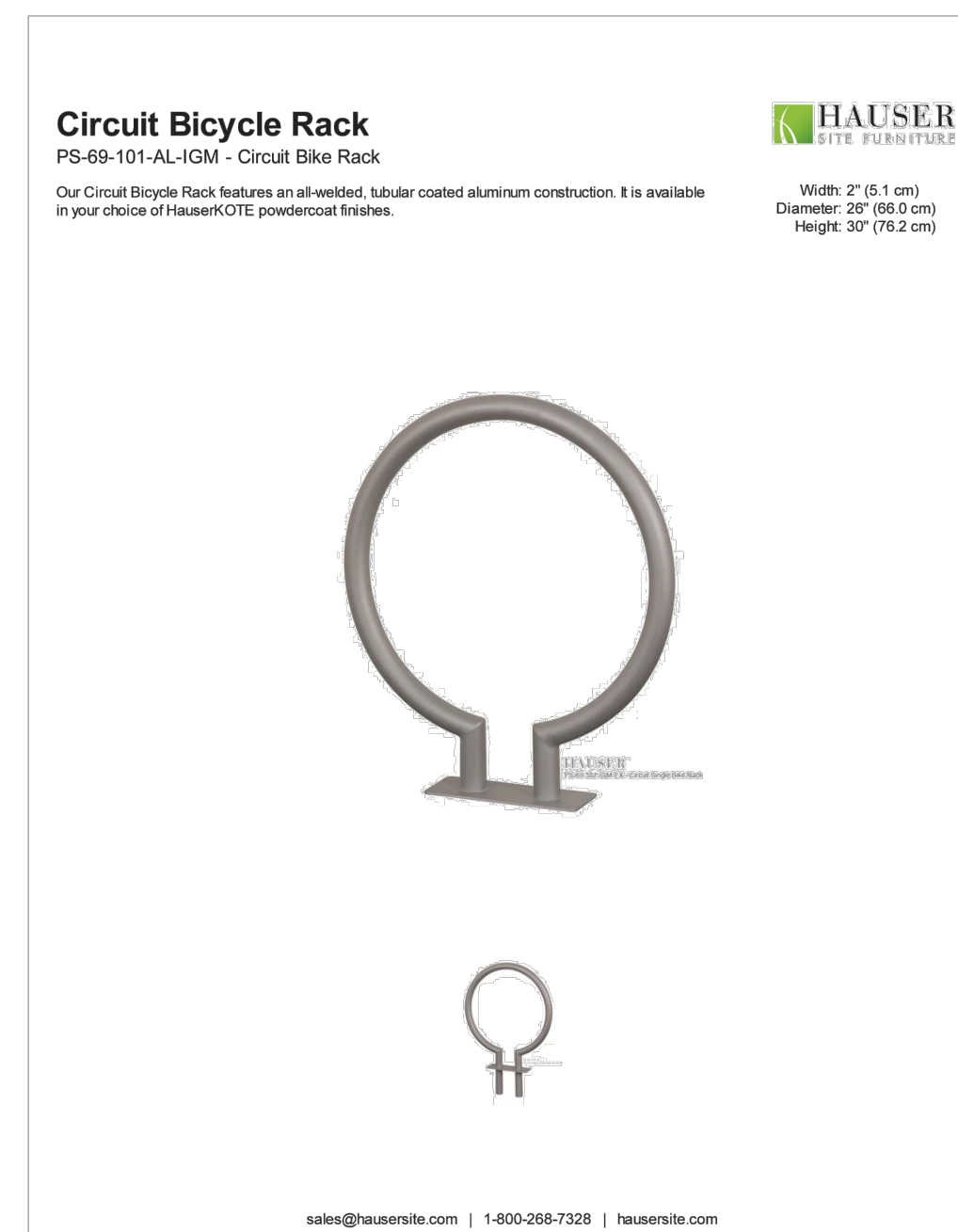
2 L-6 PATIO PAVING DETAIL AT WALKOUT BASEMENTS (UNDER DECKS)



3 BENCH NODE LAYOUT

L-6

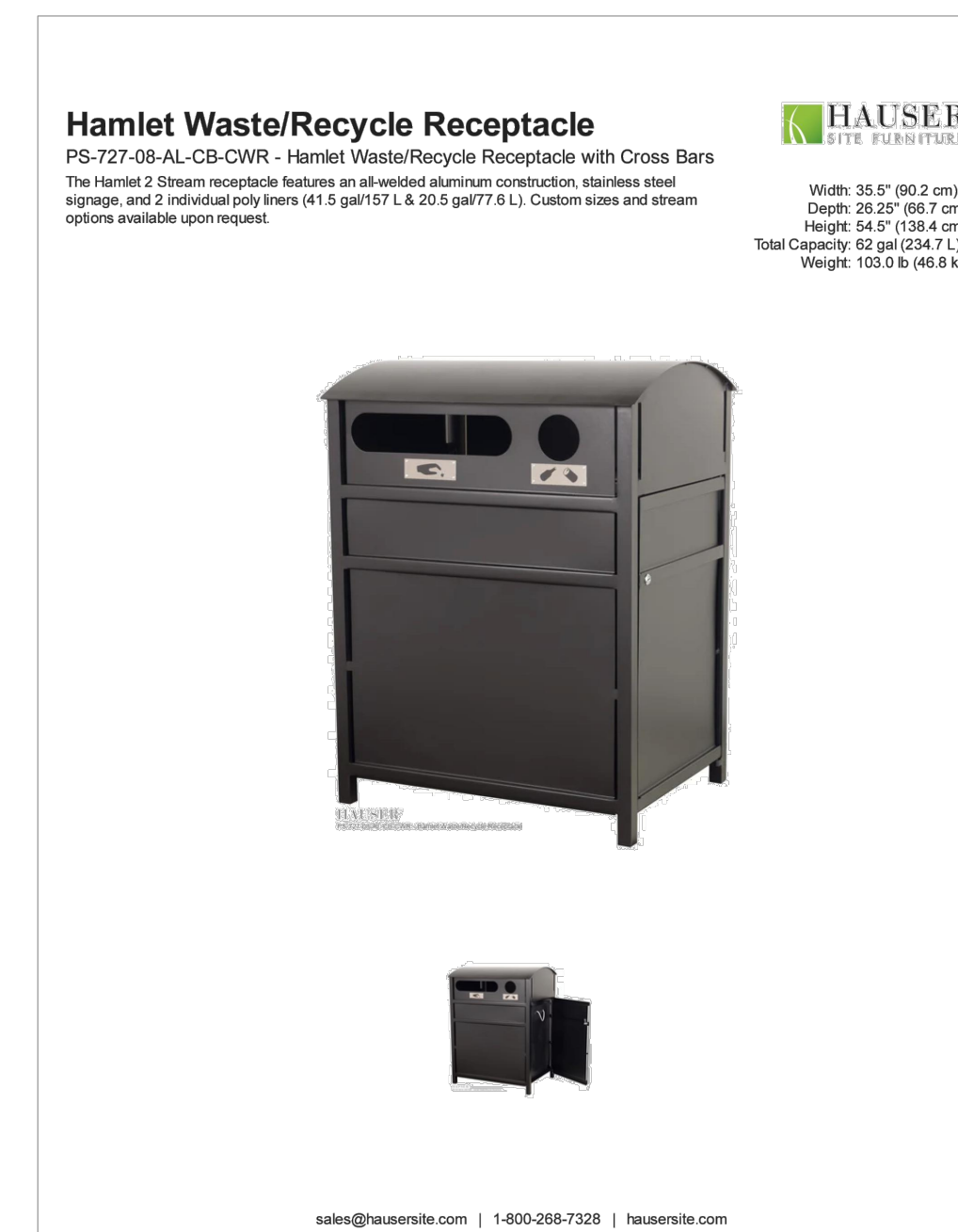
SCALE: N.T.S.



4 BICYCLE RACK DETAIL
L-6 SCALE: N.T.S.



5 BENCH DETAIL
L-6 SCALE: N.T.S.



WASTE/ RECYCLE RECEPTACLE DETAIL

5	ISSUED FOR 3rd SPA	18DEC2020
4	ISSUED FOR DART	20NOV2020
3	ISSUED FOR PRE-CONSULTATION (DART)	25APRIL2021
2	ISSUED FOR SECOND ENGINEERING SUBMISSION	9MAR2021
1	ISSUED FOR FIRST ENGINEERING SUBMISSION	28NOV2020
No.	REVISIONS TO DRAWING	DATE

ALL PREVIOUS ISSUES OF THIS DRAWING ARE SUPERSEDED

NUNNVILLE RESIDENTIAL DEVELOPMENT

MUNICIPALITY	TOWN OF CALEDON
--------------	-----------------

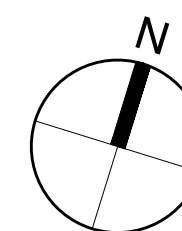
PROJECT ADDRESS
13290 NUNNVILLE ROAD, CALEDON

SHEET TITLE

LANDSCAPE NOTES AND DETAILS

CONSULTANT

L LAUD STUDIOS INC.
LAUD STUDIOS INC. 10000 RIVERCHURCH DRIVE SUITE 100
 FARMINGTON, CT 06030-1000
 TEL: 860/271-1000 FAX: 860/271-1001
 WWW.LAUDSTUDIOS.COM



SCALE N.T.S.	DATE 15 MAR 2022	PROJECT NUMBER 202203
DESIGNED LSN	DRAWN LSN	CHECKED LSN
DWG. NUMBER		

L-6