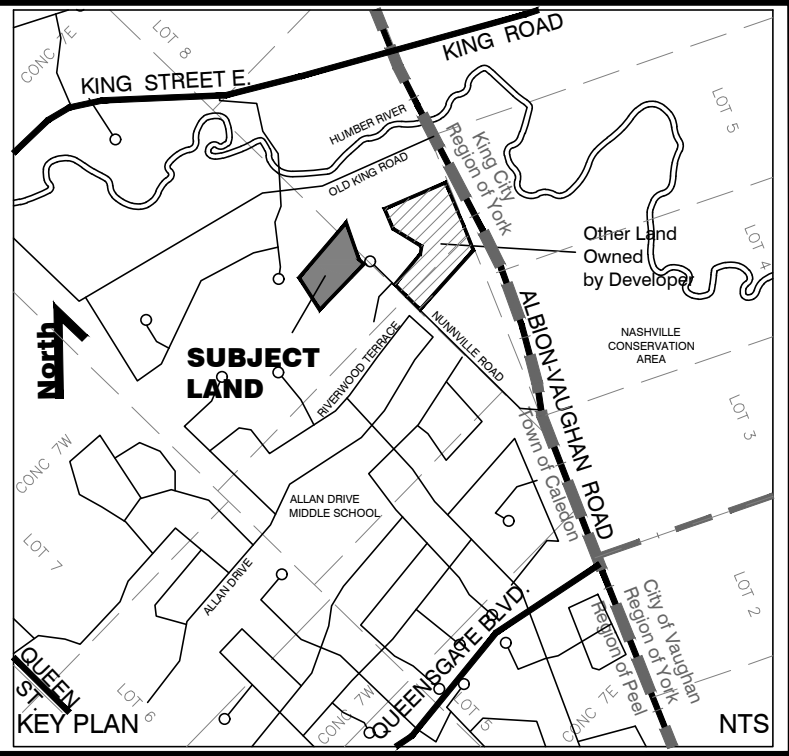
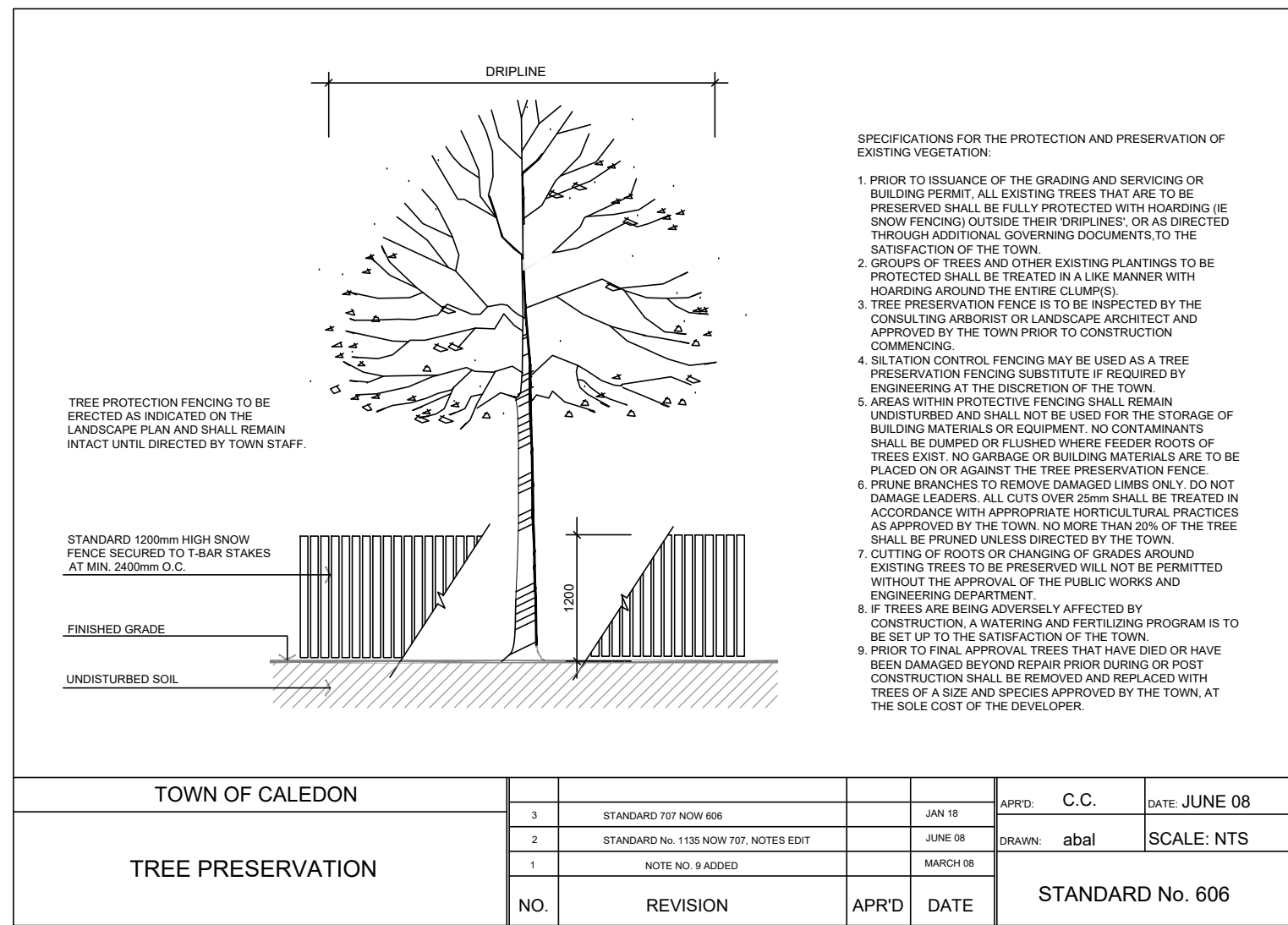


NOT FOR CONSTRUCTION
SPA ONLY

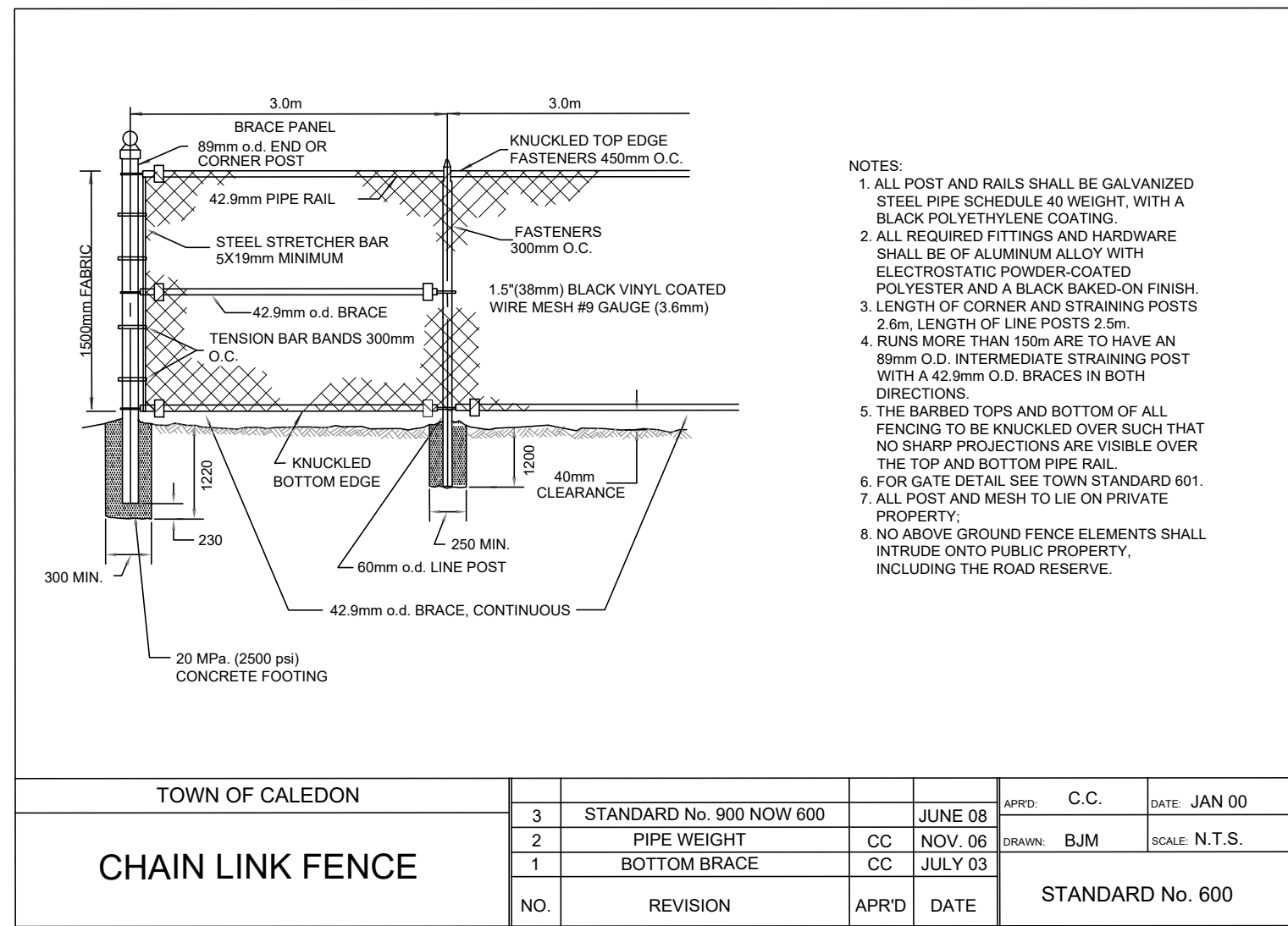


TOWN OF CALEDON
PLANNING
RECEIVED
Dec 22, 2023



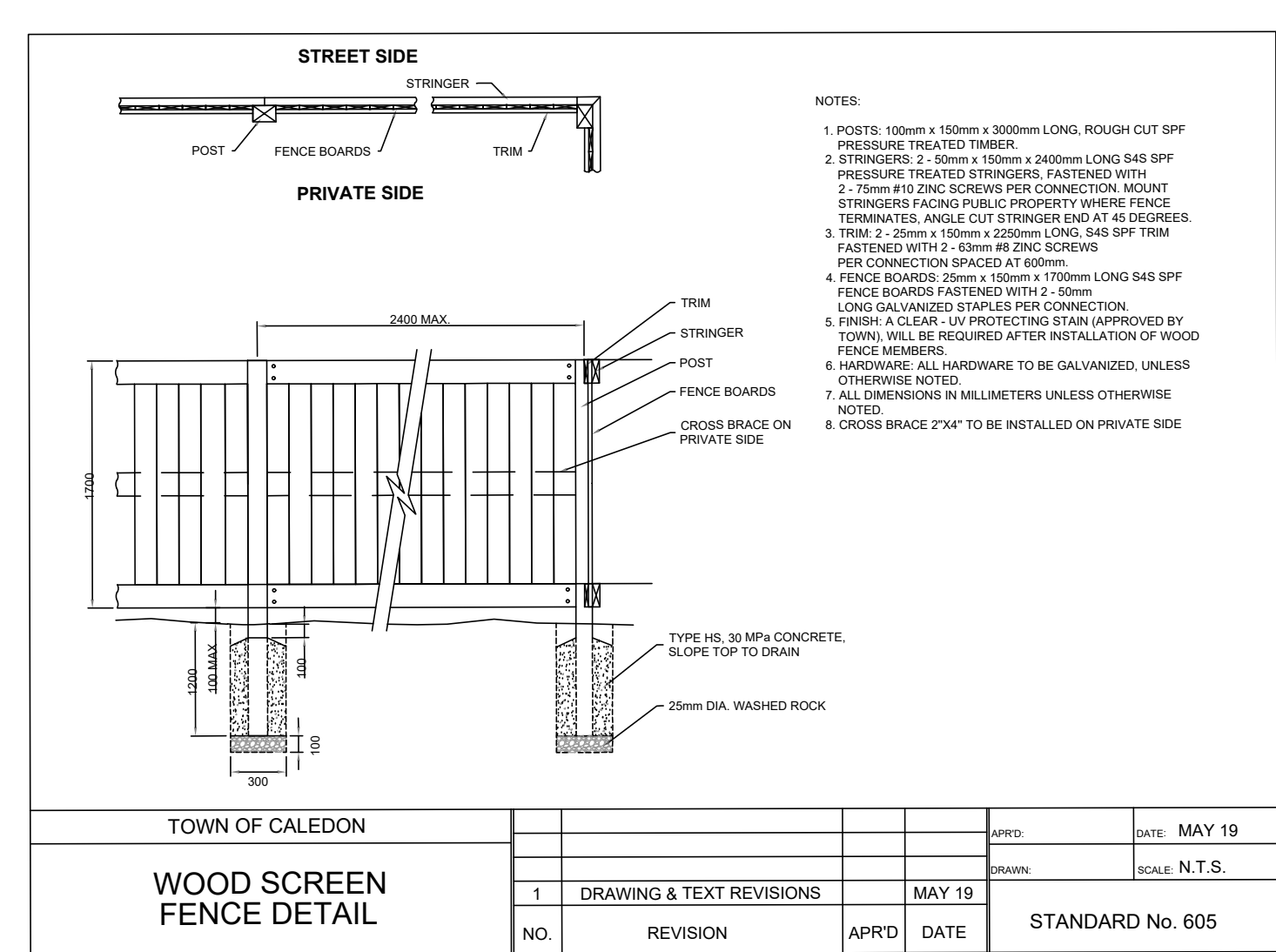
1 TREE PRESERVATION FENCE DETAIL

SCALE: N.T.S.



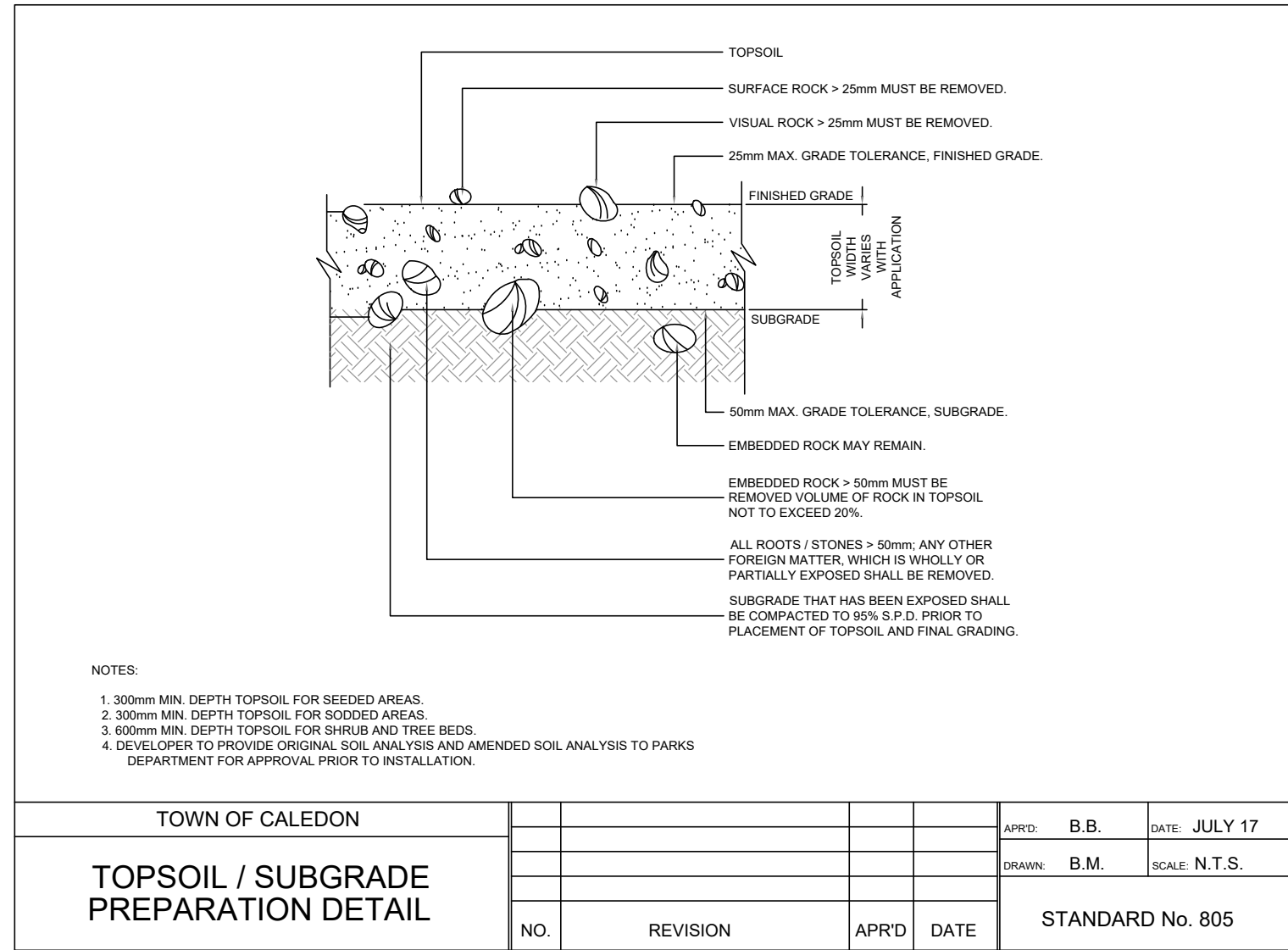
2 CHAIN LINK FENCE DETAIL

SCALE: N.T.S.



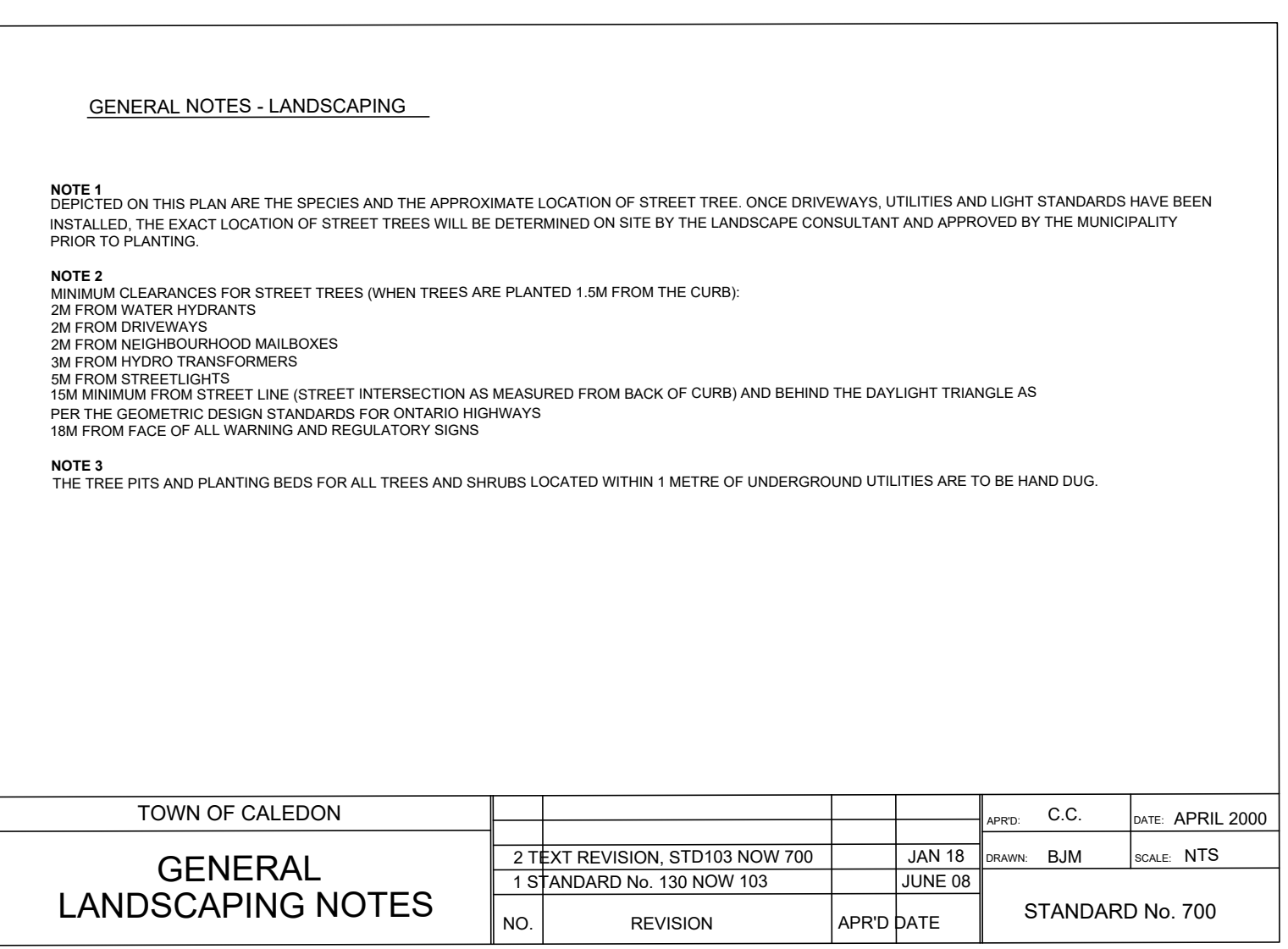
3 WOOD SCREEN FENCE DETAIL

SCALE: N.T.S.



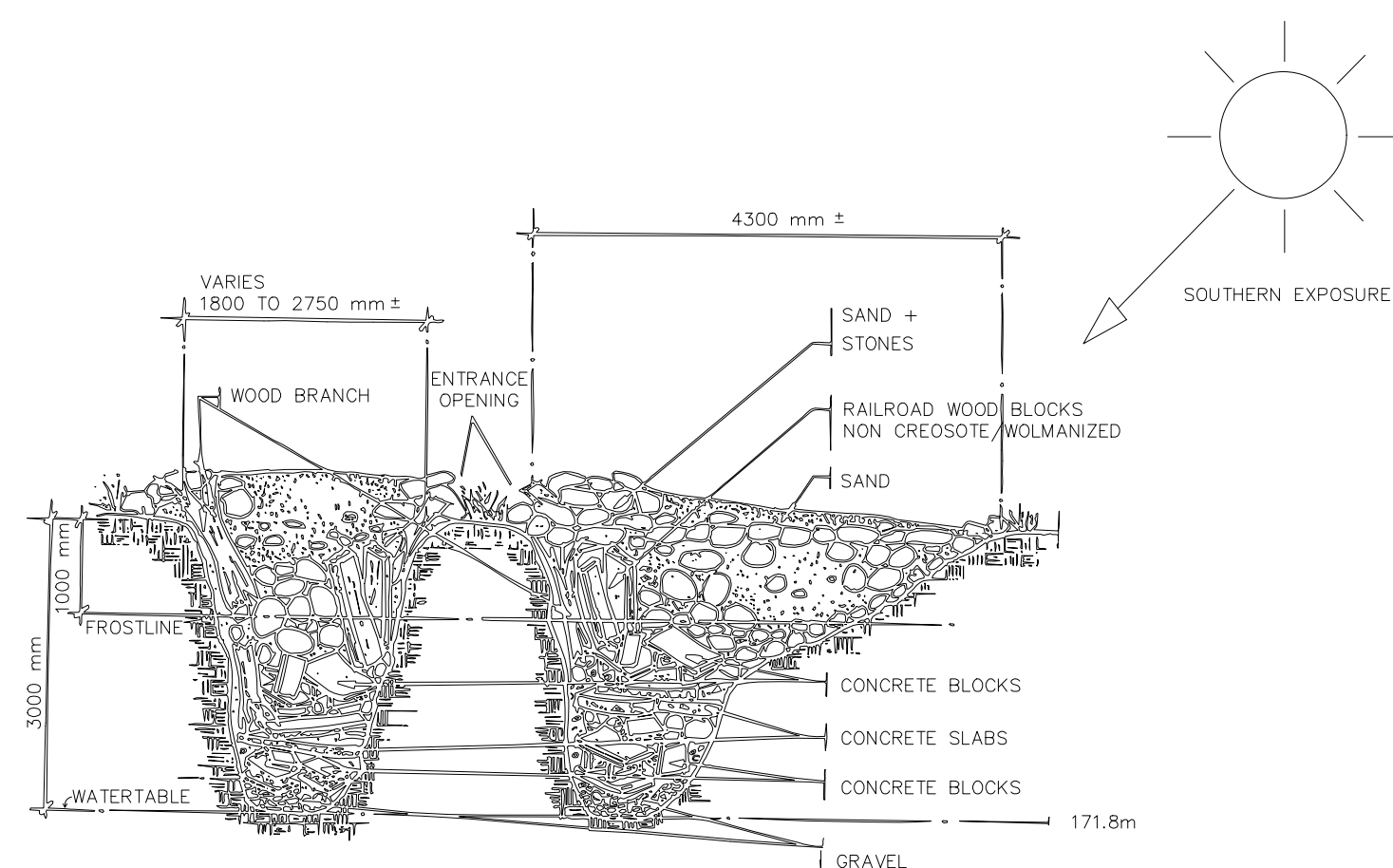
4 TOPSOIL / SUB-GRADE PREPARATION DETAIL

SCALE: N.T.S.



5 GENERAL LANDSCAPING NOTES

SCALE: N.T.S.



6 SNAKE HIBERNACULA DETAIL

SCALE: N.T.S.

5	ISSUED FOR 3rd SPA	18DEC2023
4	ISSUED FOR DART	20NOV2023
3	ISSUED FOR PRE-CONSULTATION (DART)	25APRIL2023
2	ISSUED FOR SECOND ENGINEERING SUBMISSION	9MAR2023
1	ISSUED FOR FIRST ENGINEERING SUBMISSION	28NOV2022
No.	REVISIONS TO DRAWING	DATE

ALL PREVIOUS ISSUES OF THIS DRAWING ARE SUPERSEDED		
PROJECT TITLE		
NUNNVILLE RESIDENTIAL DEVELOPMENT		
MUNICIPALITY		
TOWN OF CALEDON		
PROJECT ADDRESS		
13290 NUNNVILLE ROAD, CALEDON		
SHEET TITLE		
LANDSCAPE NOTES AND DETAILS		

CONSULTANT		
L LAND STUDIOS INC.		
STAMP		
N		
SCALE N.T.S.		
DATE 15 MAR 2022		
PROJECT NUMBER 202203		
DESIGNED LSN		
DRAWN LSN		
CHECKED LSN		
DWG. NUMBER		
L-5		