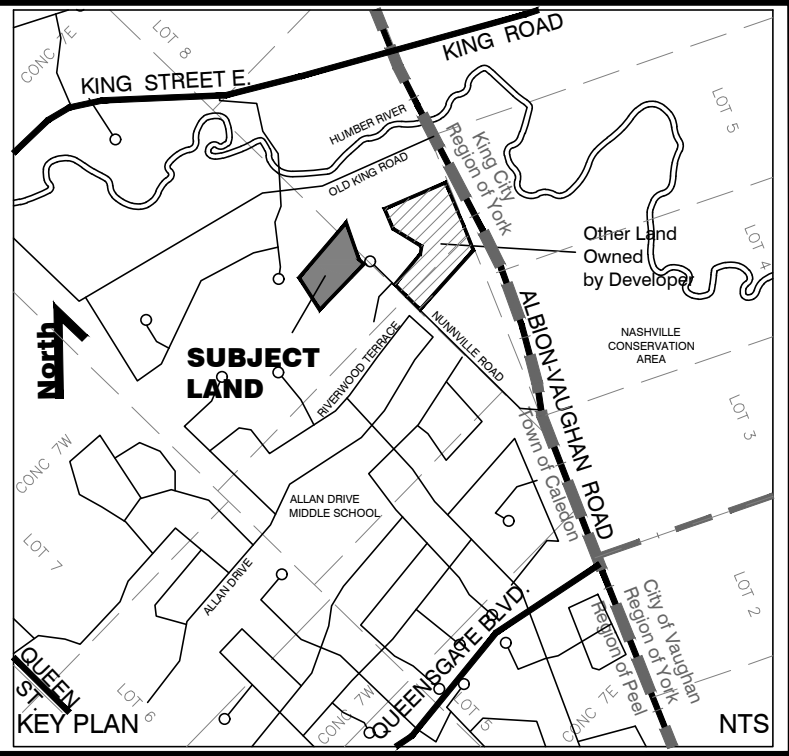
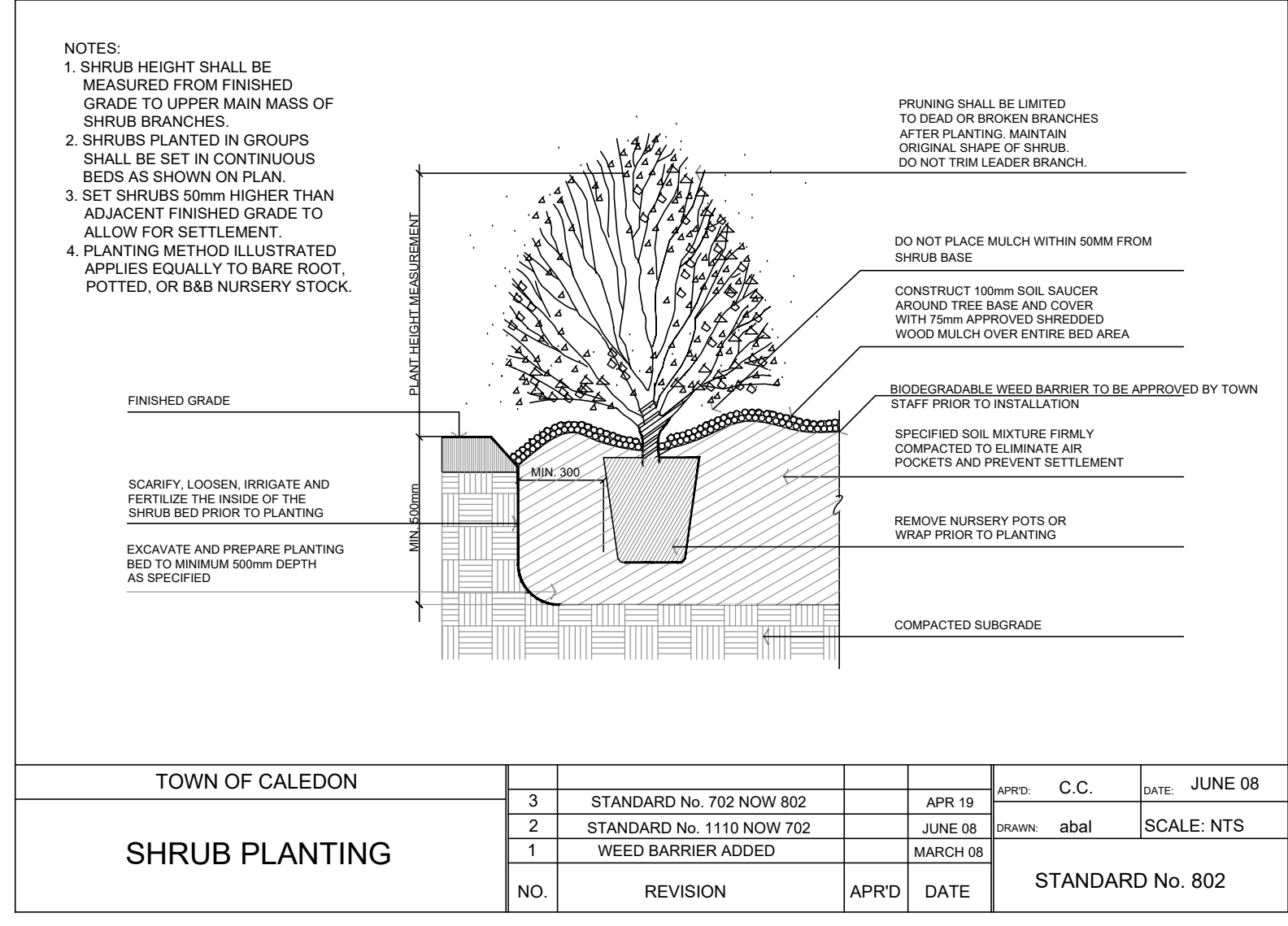
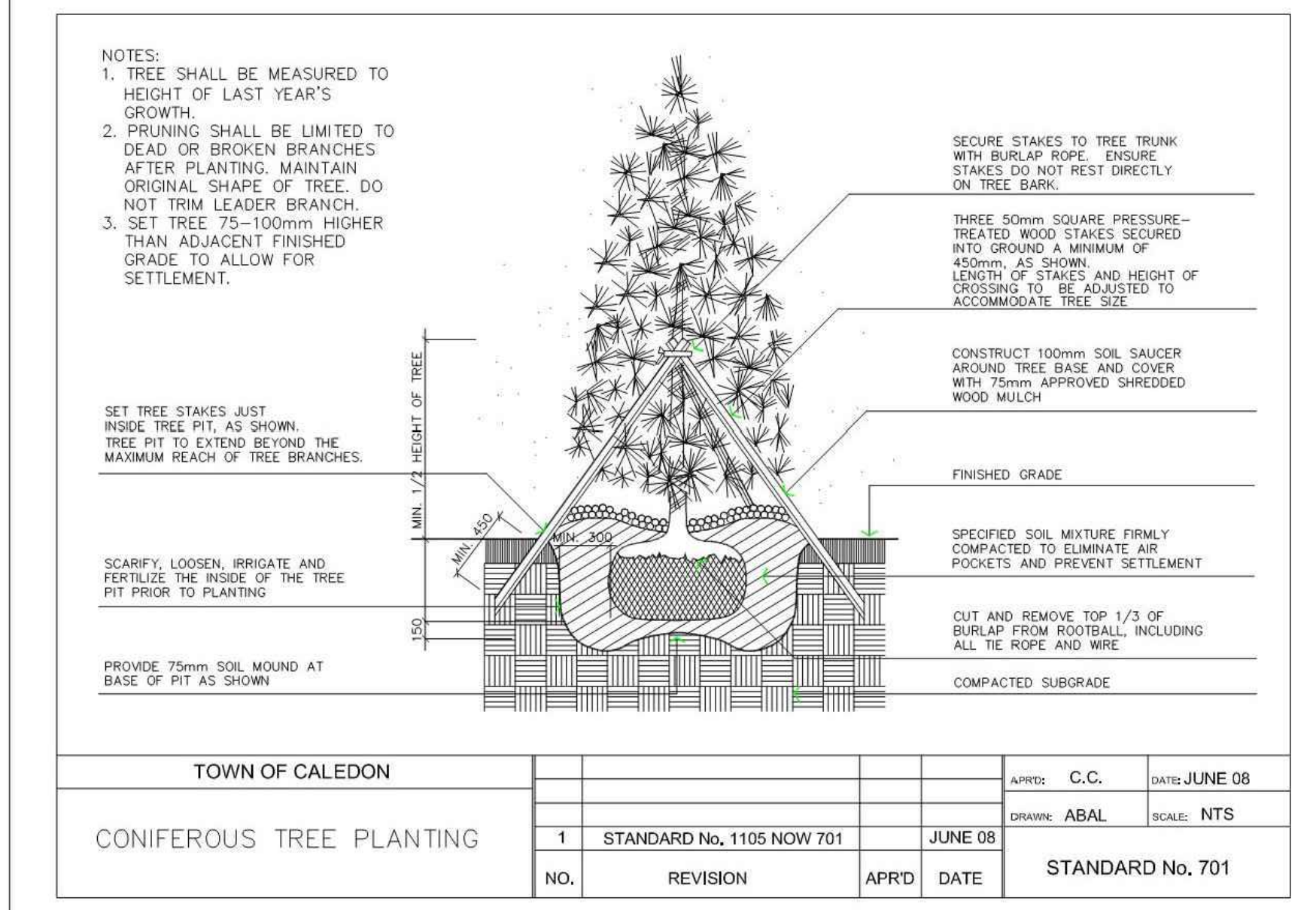
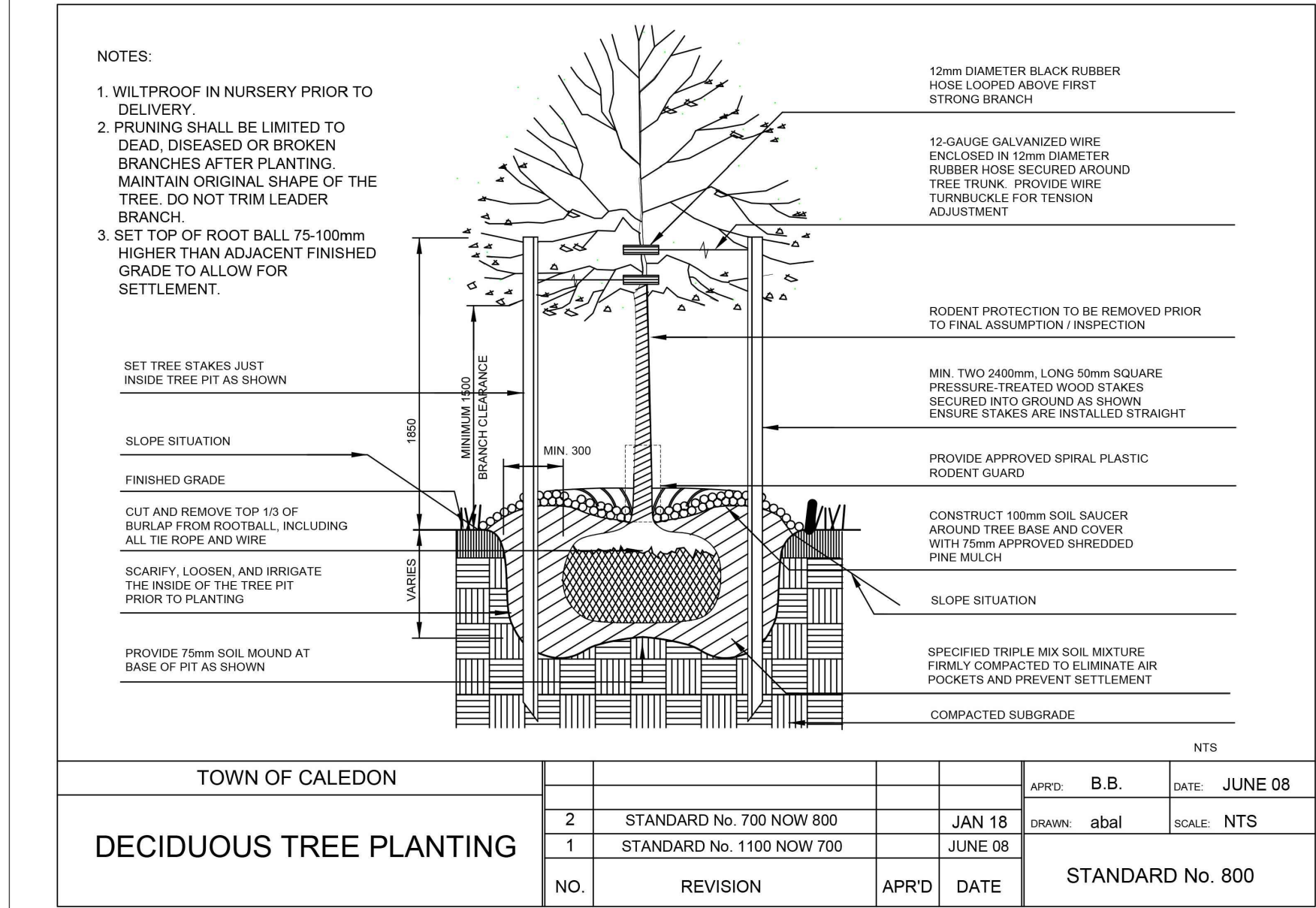


NOT FOR CONSTRUCTION  
SPA ONLY



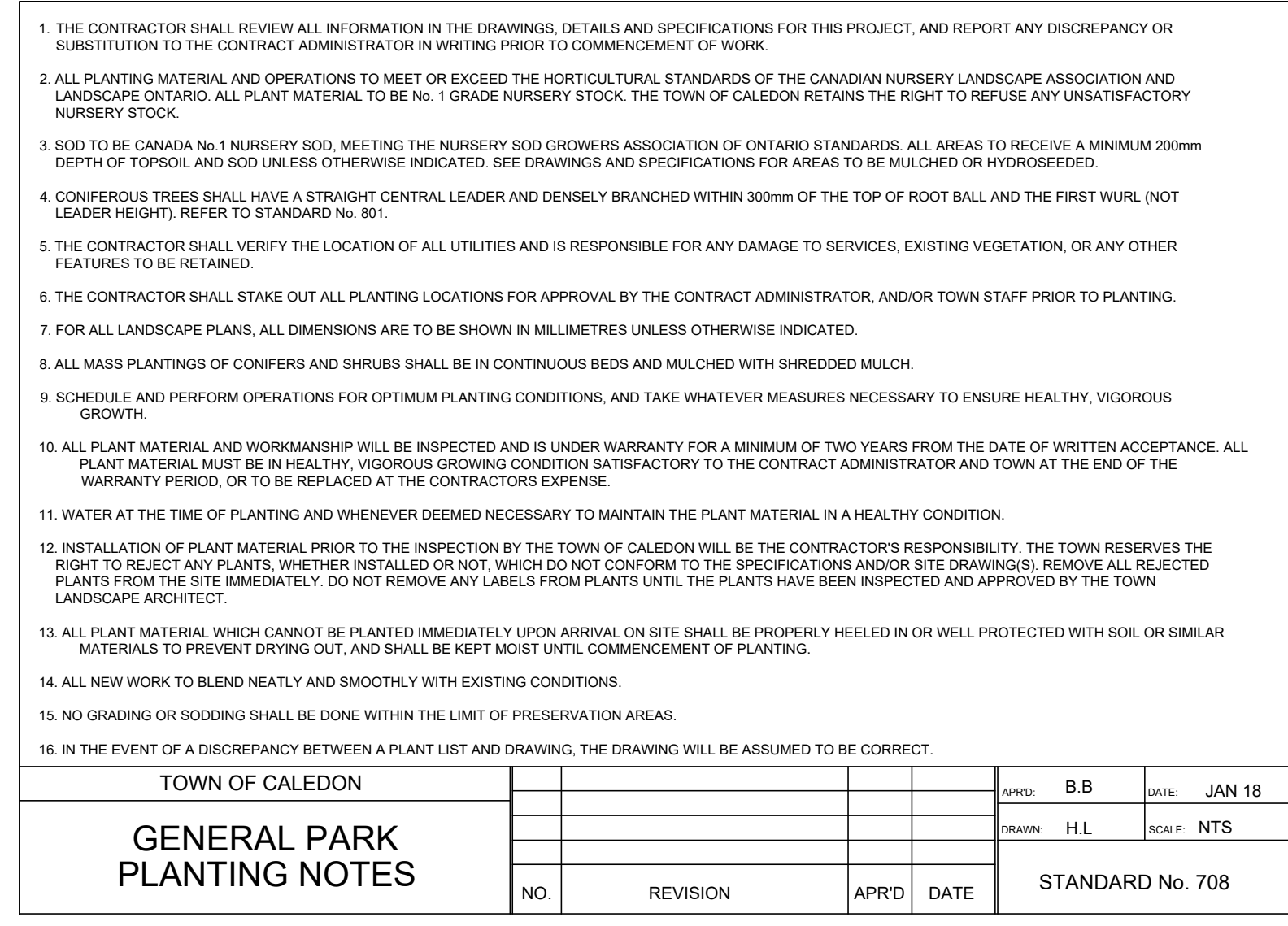
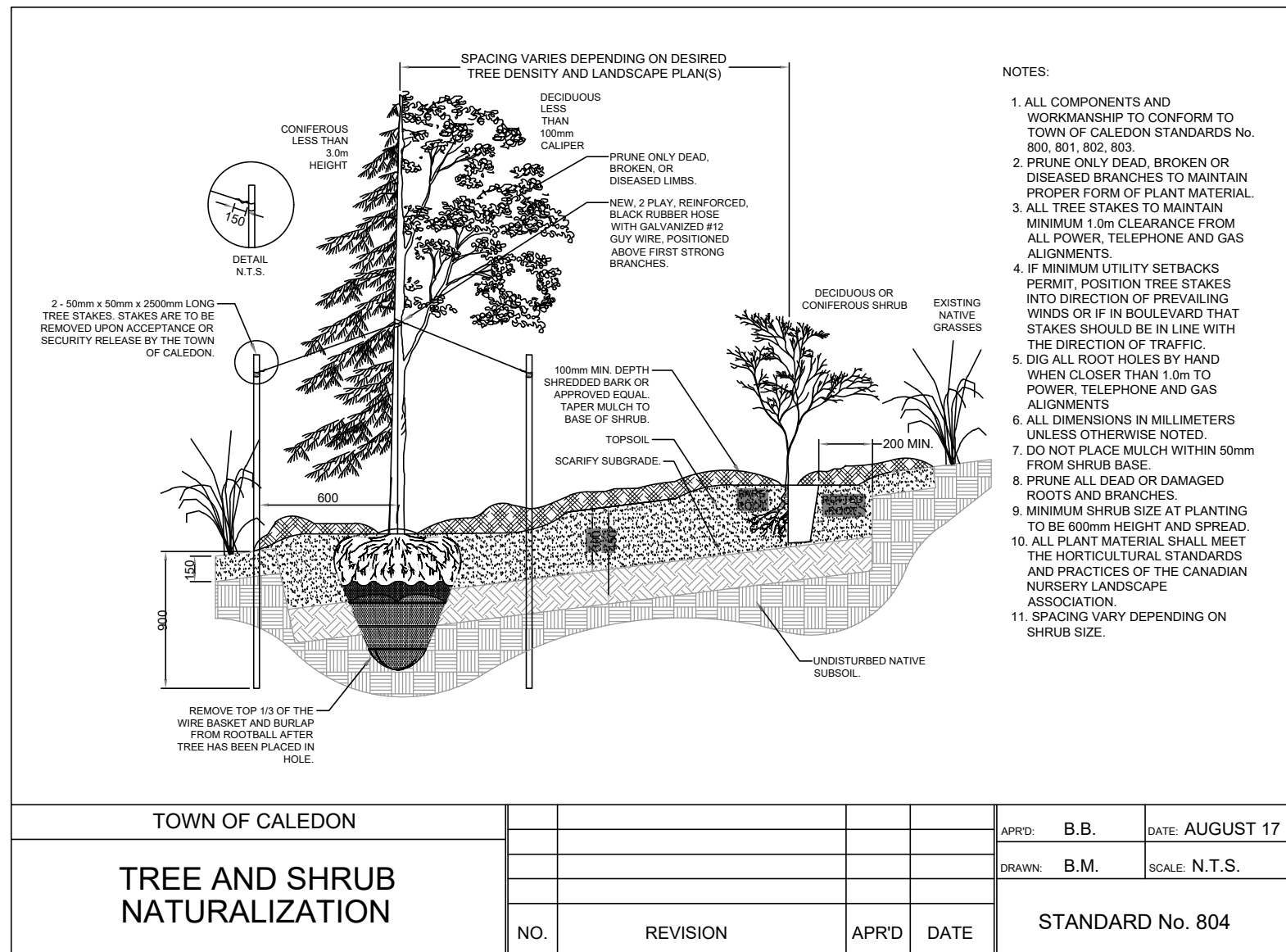
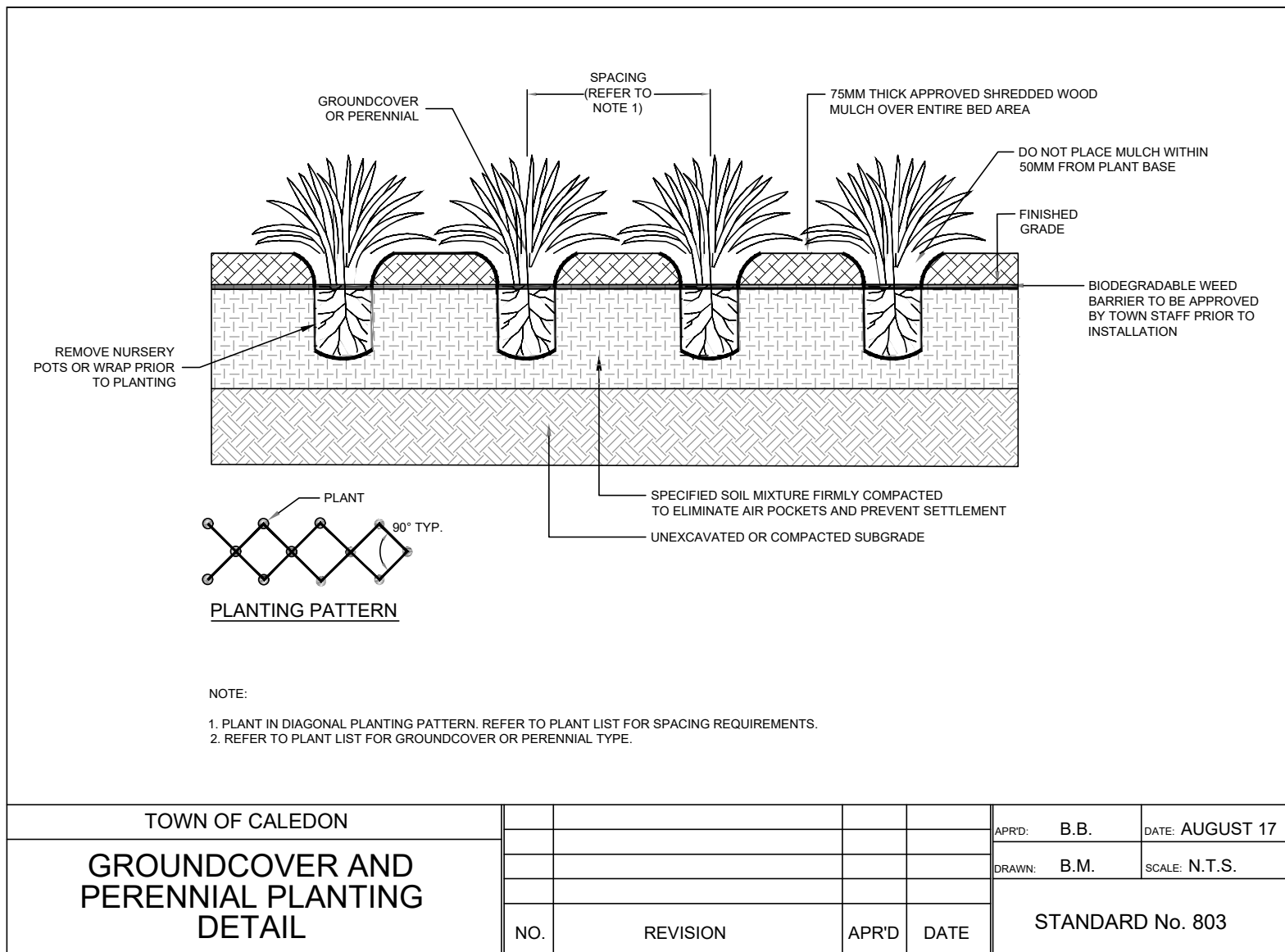
TOWN OF CALEDON  
PLANNING  
RECEIVED  
Dec 22, 2023



1 DECIDUOUS TREE PLANTING DETAIL  
(ALL SPECIES AND CALIPER TREES)

2 CONIFEROUS TREE PLANTING DETAIL  
(ALL SPECIES AND 1500mm HEIGHT)

3 SHRUB PLANTING DETAIL



4 GROUND COVER AND PERENNIAL PLANTING DETAIL

5 TREE AND SHRUB NATURALIZATION PLANTING DETAIL

6 GENERAL PLANTING NOTES

5	ISSUED FOR 3rd SPA	18DEC2023
4	ISSUED FOR DART	20NOV2023
3	ISSUED FOR PRE-CONSULTATION (DART)	25APRIL2023
2	ISSUED FOR SECOND ENGINEERING SUBMISSION	9MAR2023
1	ISSUED FOR FIRST ENGINEERING SUBMISSION	28NOV2022
No.	REVISIONS TO DRAWING	DATE
ALL PREVIOUS ISSUES OF THIS DRAWING ARE SUPERSEDED		
PROJECT TITLE		
NUNNVILLE RESIDENTIAL DEVELOPMENT		
MUNICIPALITY		
TOWN OF CALEDON		
PROJECT ADDRESS		
13290 NUNNVILLE ROAD, CALEDON		
SHEET TITLE		
LANDSCAPE NOTES AND DETAILS		
CONSULTANT		
L LAND STUDIOS INC.		
STAMP		
ASSOCIATION OF LANDSCAPE ARCHITECTS OF ONTARIO 18/DEC/2023 Shirley Wang Landscape Architect		
N		
SCALE N.T.S.		
SCALE N.T.S.	DATE 15 MAR 2022	PROJECT NUMBER 202203
DESIGNED LSN	DRAWN LSN	CHECKED LSN
DWG. NUMBER	L-4	