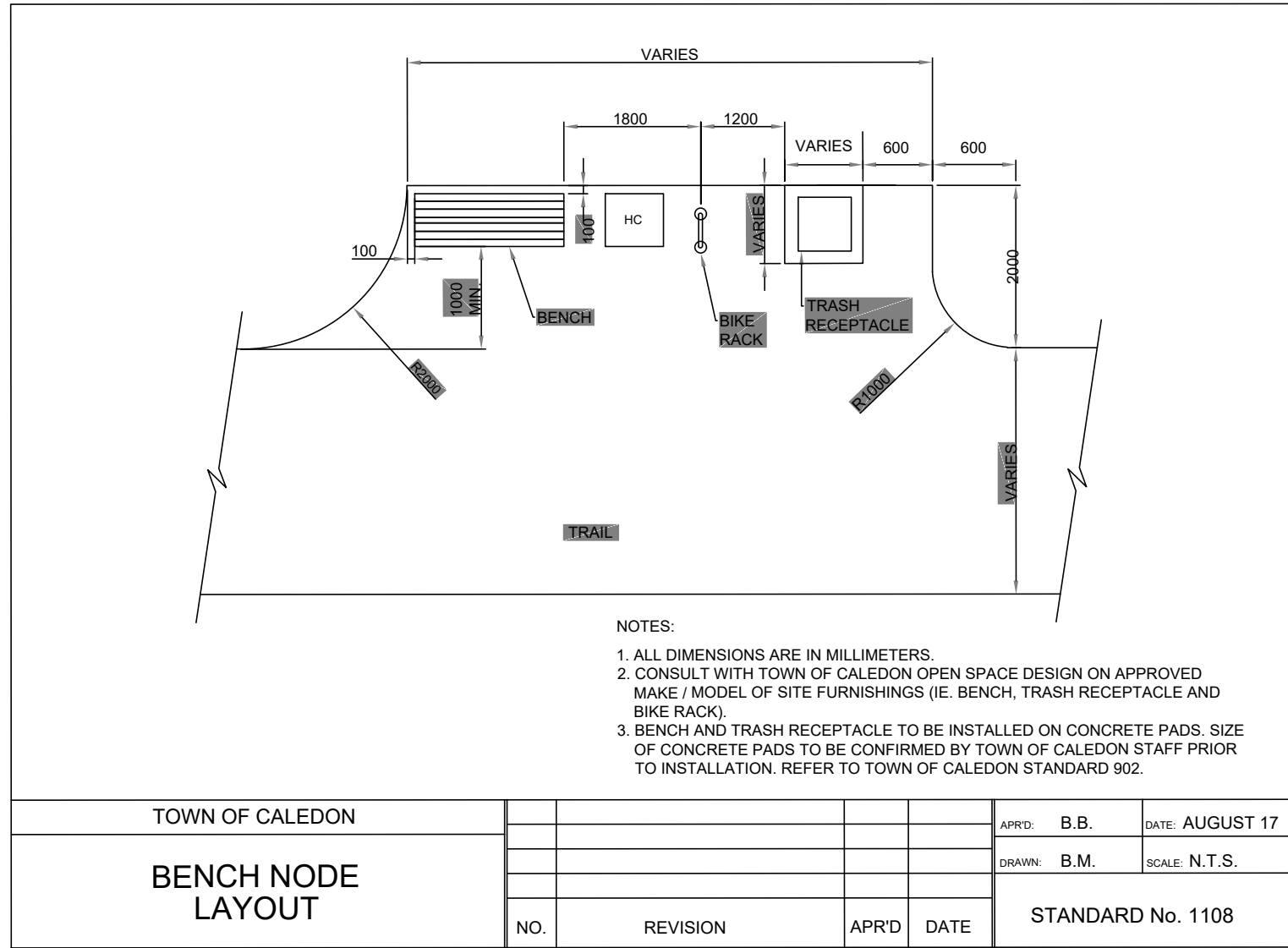


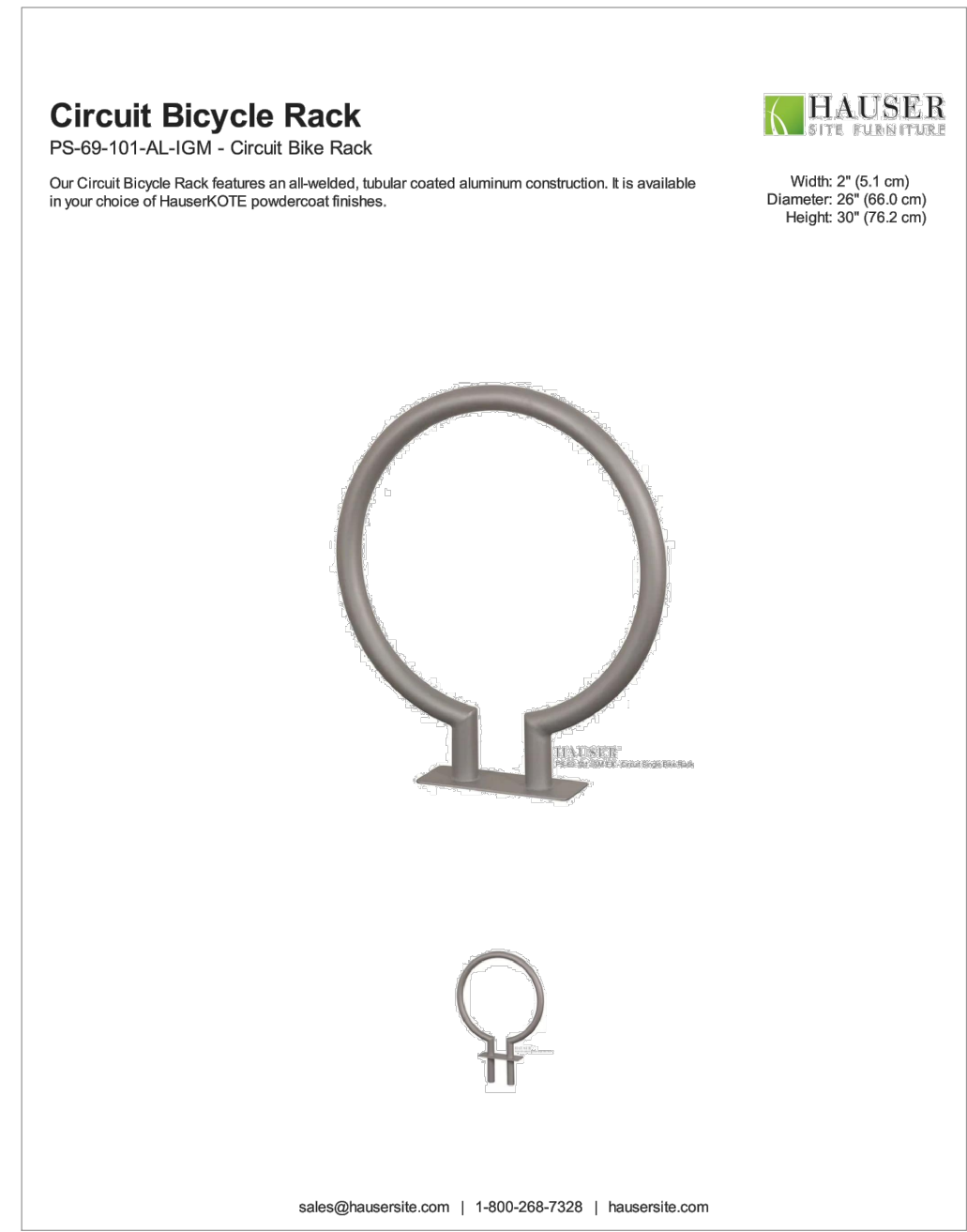
1 POURED IN PLACE CONCRETE PAVING DETAIL SCALE: N.T.S.

2 LIGHT DUTY UNIT PAVING DETAIL SCALE: N.T.S.

3 PERMEABLE UNIT PAVING DETAIL SCALE: N.T.S.



4 BENCH NODE LAYOUT SCALE: N.T.S.



5 BICYCLE RACK DETAIL SCALE: N.T.S.



6 BENCH DETAIL SCALE: N.T.S.



7 WASTE/ RECYCLE RECEPTACLE DETAIL SCALE: N.T.S.

TOWN OF CALEDON
PLANNING
RECEIVED
Mar 23, 2023

NOT FOR CONSTRUCTION
SPA ONLY

NO.	REVISIONS TO DRAWING	DATE
2	ISSUED FOR SECOND ENGINEERING SUBMISSION	2MAR2023
1	ISSUED FOR FIRST ENGINEERING SUBMISSION	28NOV2022

ALL PREVIOUS ISSUES OF THIS DRAWING ARE SUPERSEDED

PROJECT TITLE
NUNNVILLE RESIDENTIAL DEVELOPMENT

MUNICIPALITY
TOWN OF CALEDON

PROJECT ADDRESS
13290 NUNNVILLE ROAD, CALEDON

SHEET TITLE
LANDSCAPE NOTES AND DETAILS

CONSULTANT
L LAND STUDIOS INC.

STAMP
ASSOCIATION OF LANDSCAPE ARCHITECTS
ONIA
Mar 23, 2023

SCALE
N.T.S.

DATE
15 MAR 2022

PROJECT NUMBER
202203

DESIGNED
LSN

DRAWN
LSN

CHECKED
LSN

DWG. NUMBER
L-5